

SAN DIEGO  
COUNTY WATER AUTHORITY



TWENTY-NINTH ANNUAL REPORT  
1975

SAN DIEGO COUNTY WATER AUTHORITY  
Organized June 9, 1944

# TWENTY-NINTH ANNUAL REPORT

OF AUTHORITY OPERATIONS

FOR FISCAL YEAR ENDING JUNE 30, 1975

Linden R. Burzell  
*General Manager and Chief Engineer*

SAN DIEGO, CALIFORNIA  
1975

TABLE OF CONTENTS

	Page
BOARD OF DIRECTORS .....	13
General .....	13
Policies .....	14
Other Action .....	15
Administration .....	15
COLORADO RIVER BOARD MEMBERSHIP .....	38
COMMITTEES OF THE BOARD .....	8
DESIGN AND CONSTRUCTION .....	29
LEGAL DEPARTMENT .....	32
LETTER OF TRANSMITTAL .....	11
MEMBER AGENCIES, DATE OF ENTRY AND REPRESENTATIVES .....	4
METROPOLITAN WATER DISTRICT MEMBERSHIP .....	34
General .....	34
Assessed Valuation .....	36
Water Sales .....	36
Tax Rate .....	38
OFFICERS AND BOARD OF DIRECTORS .....	5
OPERATION AND MAINTENANCE OF AQUEDUCTS .....	29
General .....	29
General Activities .....	29
STATISTICAL SUMMARY .....	9
TREASURER'S REPORT .....	33
WATER AUTHORITY COMPOSITION .....	15
Area .....	15
Assessed Valuation .....	17
Population .....	17
WATER SUPPLY AND CONSUMPTION .....	17
Agricultural Water Use .....	24
Allocation of Water Among Member Agencies .....	27
Authority Facilities .....	18
Deliveries and Rates .....	20
Future Supplies .....	27
MWD Facilities .....	17
Source .....	17
Water Production of Member Agencies .....	21
Water Quality .....	24
Water Treatment .....	24

FIGURES

A. Authority Area Within San Diego County .....	12
B. Water Production of Authority Member Agencies .....	23
C. Rainfall Record at San Diego, California .....	26
D. Composition of The Metropolitan Water District of Southern California .....	35
E. Water Systems of Metropolitan Water District and San Diego County Water Authority .....	37

TABLE OF CONTENTS  
(continued)

INDEX TO TABLES

APPENDIX A — STATISTICAL TABLES

	Table No.	Page
Agricultural Use of Water—Fiscal Year 1974-75 .....	10	52
Allocation of Right to Purchase Authority Water .....	14	56
Analysis of Colorado River Aqueduct Water .....	13	55
Annexation Charges, Assessments and Balances .....	18	60
Area—Authority Member Agencies .....	1	42
Assessed Valuations—Authority Member Agencies and County .....	4	45
Assessed Valuations and Tax Rates .....	16	58
Assessed Valuations and Tax Rates of the Metropolitan Water District .....	19	61
Authority Storage in San Vicente Reservoir .....	11	53
Chemical Character of Natural Colorado River Water .....	12	54
Metropolitan Water District Annexation Charges, and Balances on Authority Areas .....	20	62
Population—Authority Member Agencies and County .....	3	44
Population Growth—County and Authority Area .....	2	43
Sales of Colorado River Water—Fiscal Year 1974-75 .....	5	46
Tax Assessments and Tax Collections .....	15	57
Tax Levies and Tax Collections .....	17	59
Unit Water Production—Per Acre and Per Capita .....	9	51
Water Production—Metropolitan Water District Constituent Areas .....	22	64
Water Production of Authority Agencies—1974-75 .....	8	50
Water Production Within Authority Agencies: Fiscal Years 1965-66 to 1974-75 .....	7	49
Water Sales—1947-75 .....	6	48
Water Sales by Metropolitan Water District .....	21	63

APPENDIX B — FINANCIAL REPORT

Auditor's Report .....	67
Balance Sheet .....	68
Bonded Debt Maturities .....	79
Changes in Equity and Fund Balances .....	72
Changes in Financial Position .....	71
Income and Expenses .....	70
Notes to Financial Statements .....	74
Operating Expense .....	78

**SAN DIEGO COUNTY WATER AUTHORITY**

*Member Agencies, Date of Entry, and  
Representative on Board of Directors on June 30, 1975*

**CITIES**

- Del Mar ..... Nov. 23, 1962  
Wallace Beron
- Escondido ..... Oct. 9, 1930  
Robert M. Dodd
- National City ..... June 9, 1944  
Cleo Osburn
- Oceanside ..... June 9, 1944  
David Rorick, Jr.
- San Diego ..... June 9, 1944  
Lois A. Brozey, Charles F. Cooper, John M. Cranston,  
Janet Erickson, R. E. Graham, Gaylord Henry,  
Lawrence Hirsch, George Kerrigan, Roy W. Lessard,  
Judith McConnell, Arthur H. Marston, Jr.

**IRRIGATION DISTRICTS**

- Helix ..... June 9, 1944  
John B. Gibson, Harry Griffen, Leland D. Pratt, M. J. Shelton
- San Dieguito ..... Dec. 13, 1948  
Frank J. Cermak
- Santa Fe ..... Dec. 13, 1948  
R. E. Badger
- South Bay ..... Nov. 3, 1952  
Lloyd L. Lee, John N. Williams  
*(Includes City of Chula Vista, an independent member agency,  
from June 9, 1944 to Nov. 3, 1952)*

**MUNICIPAL WATER DISTRICTS**

- Bueno Colorado ..... June 11, 1954  
Hans H. Doe
- Carlsbad ..... June 16, 1954  
Allan O. Kelly
- De Luz Heights ..... June 28, 1967  
George Yackey
- Olivenhain ..... July 25, 1960  
Howard G. Golem
- Otay ..... Oct. 26, 1956  
Glenn M. Reiter
- Poway ..... April 21, 1954  
David R. Shephardson
- Rainbow ..... April 10, 1954  
Pat N. Scott
- Ramona ..... August 27, 1957  
John E. Langan
- Rincon del Diablo ..... June 14, 1954  
Charles A. Crytser
- Rio San Diego ..... June 7, 1956  
Charles C. Price  
*(Includes Lakeside I.D., an independent member agency,  
from June 9, 1944 to June 7, 1956)*

- Valley Center ..... May 9, 1955  
Hadley Johnson
- Yuima ..... Dec. 16, 1963  
F. D. Fitzsimmons

**PUBLIC UTILITY DISTRICT**

- Fallbrook ..... June 9, 1944  
Paul K. Algert

**OFFICERS OF  
BOARD OF DIRECTORS**



Chairman  
**HANS H. DOE**  
*Bueno Colorado  
Municipal Water District  
6-54 to 6-75*



Vice Chairman  
**LLOYD L. LEE**  
*South Bay  
Irrigation District  
4-61 to 6-75*



Secretary  
**JOHN M. CRANSTON**  
*San Diego  
10-64 to 6-75*



Treasurer  
**HARRY GRIFFEN**  
*Helix  
Water District  
7-58 to 6-75*



Controller  
**GEORGE KERRIGAN**  
*San Diego  
9-53 to 6-75*

**EXECUTIVE  
OFFICERS**



**LINDEN R. BURZELL**  
*General Manager and  
Chief Engineer*



**PAUL D. ENGSTRAND**  
*General Counsel*

**ADMINISTRATIVE STAFF**



**B. L. OGDEN**  
*Assistant Chief  
Engineer*



**HENRY LOZANO**  
*Director of  
Finance*



**I. E. NICHOLS**  
*Superintendent*



**JANET RAVIART**  
*Executive Secretary*

BOARD OF DIRECTORS  
1974-75  
For Officers, See Page 5



PAUL K. ALGERT  
Fallbrook Public  
Utility District  
7-74 to 6-75



R. E. BADGER  
Santa Fe  
Irrigation District  
9-57 to 6-75



WALLACE BERON  
Del Mar  
3-75 to 6-75



LOIS A. BROZEY  
San Diego  
8-74 to 6-75



FRANK J. CERMAK  
San Diego  
Irrigation District  
7-66 to 6-75



CHARLES F. COOPER  
San Diego  
4-73 to 6-75



CHARLES A. CRYTSEY  
Rincon del Diablo  
Municipal Water District  
6-54 to 6-75



ROBERT M. DODO  
Escondido  
1-70 to 6-75



JANET ERICKSON  
San Diego  
2-74 to 6-75



F. D. FITZSIMMONS  
Yuima Municipal  
Water District  
8-71 to 6-75



JOHN B. GIBSON  
Helix  
Water District  
10-71 to 6-75



HOWARD G. GOLEM  
Olivewood Municipal  
Water District  
1-62 to 6-75



R. E. GRAHAM  
San Diego  
7-63 to 6-75



GAYLORD L. HENRY  
San Diego  
11-64 to 6-75



LAWRENCE HIRSCH  
San Diego  
5-73 to 6-75



HADLEY JOHNSON  
Valley Center  
Municipal Water District  
1-72 to 6-75

BOARD OF DIRECTORS  
1974-75  
(Continued)



ALLAN O. KELLY  
Carlsbad Municipal  
Water District  
11-63 to 6-75



JOHN E. LANGAN  
Ramona Municipal  
Water District  
4-61 to 6-75



ROY W. LESSARD  
San Diego  
5-73 to 6-75



JUDITH McCONNELL  
San Diego  
4-73 to 6-75



ARTHUR H. MARSTON, JR.  
San Diego  
12-74 to 6-75



CLEO OSBURN  
National City  
3-70 to 6-75



LELAND D. PRATT  
Helix  
Water District  
11-69 to 6-75



CHARLES C. PRICE  
Rio San Diego  
Municipal Water District  
7-58 to 6-75



GLENN M. REITER  
Otay Municipal  
Water District  
9-71 to 6-75



DAVID RORICK, JR.  
Oceanside  
8-63 to 6-75



PAT N. SCOTT  
Rainbow Municipal  
Water District  
9-74 to 6-75



M. J. SHELTON  
Helix Water District  
2-48 to 6-56  
10-65 to 6-75



DAVID R. SHEPPARD  
Poway Municipal  
Water District  
4-54 to 6-75



JOHN N. WILLIAMS  
South Bay  
11-70 to 6-75



GEORGE YACKEY  
De Luz Heights  
Municipal Water District  
6-68 to 6-75

COMMITTEES OF THE BOARD

June 30, 1975

ADMINISTRATIVE CODE

Roy W. Lessard, Chairman  
Allan O. Kelly, Vice Chairman  
R. E. Badger  
Frank J. Cermak  
John M. Cranston  
John B. Gibson  
Gaylord L. Henry  
Lloyd L. Lee  
George F. Yackey

ENVIRONMENTAL POLICY

M. J. Shelton, Chairman  
Charles F. Cooper, Vice Chairman  
Paul K. Algert  
Wallace Beron  
John M. Cranston  
Janet Erickson  
Arthur H. Marston, Jr.  
Charles C. Price  
David Rorick, Jr.

FINANCE AND INSURANCE

Howard G. Golem, Chairman  
Paul K. Algert, Vice Chairman  
Lois A. Brozey  
John B. Gibson  
Harry Griffen  
Gaylord L. Henry  
John E. Langan  
Roy W. Lessard  
Leland D. Pratt  
David Rorick, Jr.  
Pat N. Scott  
John N. Williams

LEGAL AND CLAIMS

Lawrence Hirsch, Chairman  
Hadley Johnson, Vice Chairman  
Charles F. Cooper  
John M. Cranston  
Howard G. Golem  
Gaylord L. Henry  
George Kerrigan  
Judith McConnell  
Pat N. Scott  
John N. Williams

LAND AND RIGHTS OF WAY

Robert M. Dodd, Chairman  
Judith McConnell, Vice Chairman  
Paul K. Algert  
Wallace Beron  
Lois A. Brozey  
Charles A. Crytser  
F. D. Fitzsimmons  
John B. Gibson  
Allan O. Kelly  
John E. Langan  
Charles C. Price  
David R. Shepardson

ENGINEERING AND OPERATIONS

Leland D. Pratt, Chairman  
Glenn M. Reiter, Vice Chairman  
R. E. Badger  
Frank J. Cermak  
Charles A. Crytser  
Robert M. Dodd  
Howard G. Golem  
Ralph E. Graham  
Lawrence Hirsch  
Allan O. Kelly  
George Kerrigan  
Lloyd L. Lee  
Arthur H. Marston, Jr.  
M. J. Shelton

ORGANIZATION AND PERSONNEL

John N. Williams, Chairman  
Frank J. Cermak, Vice Chairman  
Wallace Beron  
Robert M. Dodd  
Harry Griffen  
Hadley Johnson  
George Kerrigan  
John E. Langan  
Cleo Osburn  
Charles C. Price  
David R. Shepardson  
George F. Yackey

PUBLIC EDUCATION AND INFORMATION

David Rorick, Jr., Chairman  
Janet Erickson, Vice Chairman  
Lois A. Brozey  
F. D. Fitzsimmons  
Ralph E. Graham  
Roy W. Lessard  
Judith McConnell  
Cleo Osburn  
Leland D. Pratt  
Glenn M. Reiter  
Pat N. Scott

WATER PROBLEMS AND POLICY

David R. Shepardson, Chairman  
George F. Yackey, Vice Chairman  
R. E. Badger  
Charles F. Cooper  
Charles A. Crytser  
Janet Erickson  
F. D. Fitzsimmons  
Ralph E. Graham  
Harry Griffen  
Lawrence Hirsch  
Hadley Johnson  
Lloyd L. Lee  
Arthur H. Marston, Jr.  
Cleo Osburn  
Glenn M. Reiter  
M. J. Shelton

STATISTICAL SUMMARY

	1974-75	1973-74	Percent Change
<b>GROWTH OF AREA</b>			
Number of Agencies	22	22	0
Total Area - Acres	761,678	* 760,965	+0.1
Population	1,527,520	1,507,300	+1.3
Assessed Valuation	\$4,775,761,282	\$4,114,380,482	+16.1
<b>OPERATIONS</b>			
Water Imported by Authority-ac. ft.	388,485	337,880	+15.0
Water Production of Agencies-ac. ft.	384,457	390,502	-1.5
Local Water Used-ac. ft.	27,802	43,997	-36.8
Authority Water Used-ac. ft.	356,655	346,505	+2.9
Miles of Pipe Line	204	204	0
Miles of Patrol Roads Maintained	100	100	0
Number of Service Connections	60	57	+5.3
<b>FINANCIAL</b>			
Revenues:			
Water Revenue	\$ 18,449,691	\$ 16,281,533	+13.3
Other Revenue	989,181	810,384	+22.1
Taxes	5,235,728	4,513,103	+16.0
Expenditures:			
Operation and Maintenance	\$ 725,454	\$ 629,495	+15.2
Purchase of Water	18,399,771	15,713,900	+17.1
Payments on Outstanding Debt	2,229,029	2,149,029	+3.7
Total Investment in Plant:			
Total Fixed Assets	\$ 188,688,677	\$ 182,191,013	+3.6
Long-Term Debt	76,665,196	79,345,869	-3.4

\*Area of City of Escondido corrected per Planning Department.



*OROVILLE DAM in Northern California, 770-foot high keystone of the State Water Project. Lake formed by Oroville Dam will be the source of approximately 50% of water used in San Diego County beginning in 1977.*

# San Diego County Water Authority

2750 Fourth Avenue, San Diego, California 92103 (714) 297-3218

Hans H. Doe, Chairman  
Lloyd L. Lee, Vice Chairman  
John M. Cranston, Secretary  
Linden R. Burrell, General Manager  
and Chief Engineer  
Paul D. Engstrand, General Counsel

December 29, 1975

## Board of Directors San Diego County Water Authority

The Twenty-Ninth Annual Report of the Authority, covering activities during the fiscal year ending June 30, 1975, has been prepared and is transmitted herewith.

Planning, studies, and engineering design of facilities necessary to implement distribution of treated water in the San Diego Aqueduct system are nearing completion. All necessary Environmental Impact Reports have been completed. In addition, an agreement with the City of San Diego was finalized in May 1975, which provides most of the treated water service required by the Water Authority above that to be made available from Metropolitan Water District's Robert A. Skinner Treatment Plant. Progress is being made on similar agreements for smaller quantities of treated water to be obtained from Helix Water District and Poway Municipal Water District.

Metropolitan Water District now intends to commence treated water service to the Water Authority in June 1976. If this schedule is maintained and the Water Authority and its member agencies complete other needed facilities, it will be possible to commence the introduction of State Project Water into the system by April 1977.

At year's end, the Water Authority and Metropolitan Water District were nearing completion of negotiations with the United States Government, the State of California Department of Parks and Recreation, the Southern California Edison Company, and several water agencies in Orange County to provide water service to the State Park and Nuclear Generating Plant at San Onofre. The SDGWA and MWD will annex the 135,000 acre parcel of property in the northwest portion of San Diego County as a part of the final terms and conditions.

The Authority's financial position remains strong. Net revenues exceeded expenses by \$1,643,912 in the General Fund, reflecting the Board of Directors policy to construct facilities required during the next two or three years from reserves and current revenues.

Very truly yours,

L. R. Burrell  
General Manager and Chief Engineer

## Member Agencies

CITIES: Del Mar, Escondido, National City, Oceanside, San Diego • IRRIGATION DISTRICTS: Helix, San Diego, Santa Fe, South Bay  
PUBLIC UTILITY DISTRICTS: Fallbrook • MUNICIPAL WATER DISTRICTS: Buena Colorado, Carlsbad, De Luz Heights, Olivenham, Otay, Poway,  
Rainbow, Ramona, Rincon Del Diablo, Rio San Diego, Valley Center, Yuma

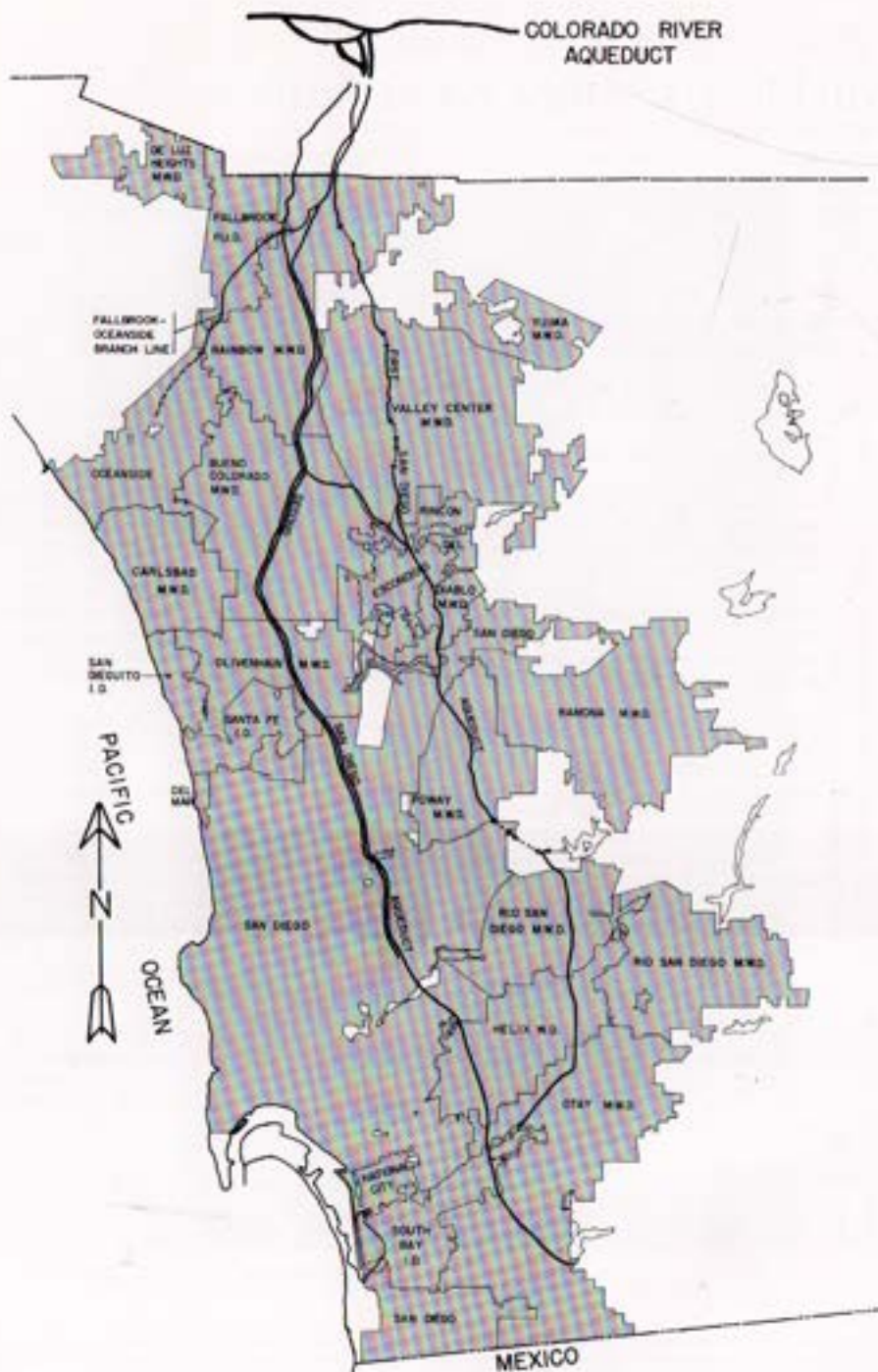


Figure A. Authority Area Within San Diego County.

FISCAL YEAR 1974-1975

The San Diego County Water Authority was organized in 1944 under the County Water Authority Act, which had been passed by the State Legislature in 1943. The purpose of the Authority is to provide imported water for municipal, domestic and other beneficial uses to its member agencies throughout the county. At present, nearly 90 percent of all water used in the County is supplied by the Authority from the Colorado River Aqueduct, which is owned and operated by the Metropolitan Water District of Southern California. MWD is also the distributor to its member agencies of water from the State Water Project. After purchasing water from MWD, the Authority, in turn, wholesales the water to its member agencies.

The Authority is a public corporation with the right to sue or be sued and to acquire, hold or dispose of real and personal property. Its powers, privileges and duties are exercised through a Board of Directors. As with a municipal corporation, it can exercise power of eminent domain and is empowered to construct and maintain works and facilities across or along public lands. It may borrow money and incur indebtedness up to a maximum of 15 percent of taxable property in its area. It may levy and collect taxes, enter into contracts, employ personnel and establish offices, and may join other public corporations for the purpose of carrying out its powers.

BOARD OF DIRECTORS

General

The policies of the San Diego County Water Authority are set by its Board of Directors. At present, the Board has 36 Directors. Each is appointed by the chief executive officer of the agency represented and is approved by the governing body of that agency. The Authority has 22 member agencies. Each member agency is entitled to one representative, and an additional representative for every five percent of total Authority assessed valuation contained within the member agency's boundary. At the end of the report year, three agencies were represented by more than one director: City of San Diego by eleven; Helix Water District by four; and South Bay Irrigation District by two representatives.

Officers of the Board of Directors are elected in July of even-numbered years. In July 1974, Hans H. Doe was elected chairman of the Water Authority Board. Lloyd L. Lee was elected vice-chairman and John Cranston was elected secretary. Harry Griffen continued to serve as Treasurer. John Williams was appointed Assistant Treasurer in February 1975. George Kerrigan was appointed Controller, August 1974, to succeed Howard Golem.

Because of the size of the Board, most matters are considered first by one or more of nine standing committees. Results of committee deliberations and recommendations for action are reported to the full Board, which may then act as it sees fit. The standing committees are Finance and Insurance, Engineering and Operations, Organization and Personnel, Water Problems and Policy, Lands and Rights of Way, Legal and Claims, Public Education and Information and Administrative Code. A standing Environmental Policy Committee was established at the August 1974 Board meeting. Director Shelton was appointed Chairman of the Committee and Director Cooper Vice-Chairman. The membership of committees as of June 30, 1975 is listed on page 8 of this report.

During the July 1974 Board meeting, Chairman Badger awarded twenty-year service emblems to Directors Hans Doe, Charles Crytser and David Shepardson. Ten-year service emblems were awarded Directors John Cranston and Gaylord Henry. Director George Yackey received his six-year service emblem. Three-year emblems were also awarded to Directors F. D. Fitzsimmons, John Gibson, Glenn Reiter and John Williams.

Pat N. Scott was seated at the September 1974 Board meeting to replace resigned Director Robert Ingold. His term will expire April 19, 1978. He represents Rainbow Municipal Water District.

At the October 1974 Board meeting Robert M. Dodd was re-seated to represent the City of Escondido. His term expires October 18, 1980.

Lawrence Hirsch, representing the City of San Diego, also was re-seated at the October 1974 meeting. His term expires July 15, 1980.

Ralph E. Graham was appointed by Governor Reagan to the California Water Commission in July 1974. Director Graham resigned from the MWD Board of Directors at the November 1974 meeting.

Director John Cranston was appointed to replace Director Graham on the MWD Board at the December 1974 meeting.

Paul K. Algert was seated as an Authority Director representing Fallbrook Public Utility District July 1974. His term expires July 15, 1980.

At the August meeting Lois A. Brozey was seated to represent the City of San Diego. She replaced H. Fred Landgraf and her term will expire March 7, 1980. Also at the August meeting, David Rorick, Jr., representing the City of Oceanside, was re-seated. His term expires July 15, 1980.

John N. Williams was re-seated at the December 12, 1974 meeting. He represents South Bay Irrigation District and his term expires December 12, 1980.

Henry Hoyt, Jr., who represented the City of San Diego resigned and was replaced by Arthur Hamilton Marston, Jr., at the March 5, 1975, Board meeting.

Wallace Beron, representing the City of Del Mar, was seated at the March 1975 meeting and his term expires March 31, 1981.

Director Lawrence Hirsch was appointed to serve on the California Water Resources Association Board of Directors at the June 1975 meeting of the Authority Board.

#### **Policies**

During the year covered by this report, many important policy decisions were reached by the Board. Some of the more noteworthy were:

A resolution adopted at the July meeting of the Board to amend local guidelines for implementation of the California Environmental Quality Act.

At the September meeting, a resolution was passed opposing Proposition 17 on the November ballot. Proposition 17 would have stopped construction of New Melones Dam on the Stanislaus River. Had it been successful, it might have put future Authority projects in jeopardy. The measure was defeated at the election.

At its February meeting, the Board authorized negotiation of a contract with the City of San Diego for delivery of treated water. It is planned that the contract between the Authority and City of San Diego will be the prototype for contracts with other agencies.

#### **Other Action**

A resolution posthumously honoring Joseph Jensen, lone-time chairman of the Metropolitan Water District's Board of Directors, was passed at the July 1974 meeting and copies were sent to Mr. Jensen's wife and family.

In August 1974, Fred C. Stalder and Gerald G. O'Brien were honored through passage of a Board resolution honoring their work as Chairman and Treasurer, respectively, of Citizens for Proposition W Committee.

#### **Administration**

The Executive Officers of the Water Authority are Linden R. Burzell, General Manager and Chief Engineer; Paul D. Engstrand, General Counsel; and William H. Jennings, General Counsel Emeritus. The Administrative Staff consists of Assistant Chief Engineer Buckley L. Ogden; Director of Finance Henry G. Lozano; Superintendent Irwin E. Nichols, and Executive Secretary Janet M. Raviart.

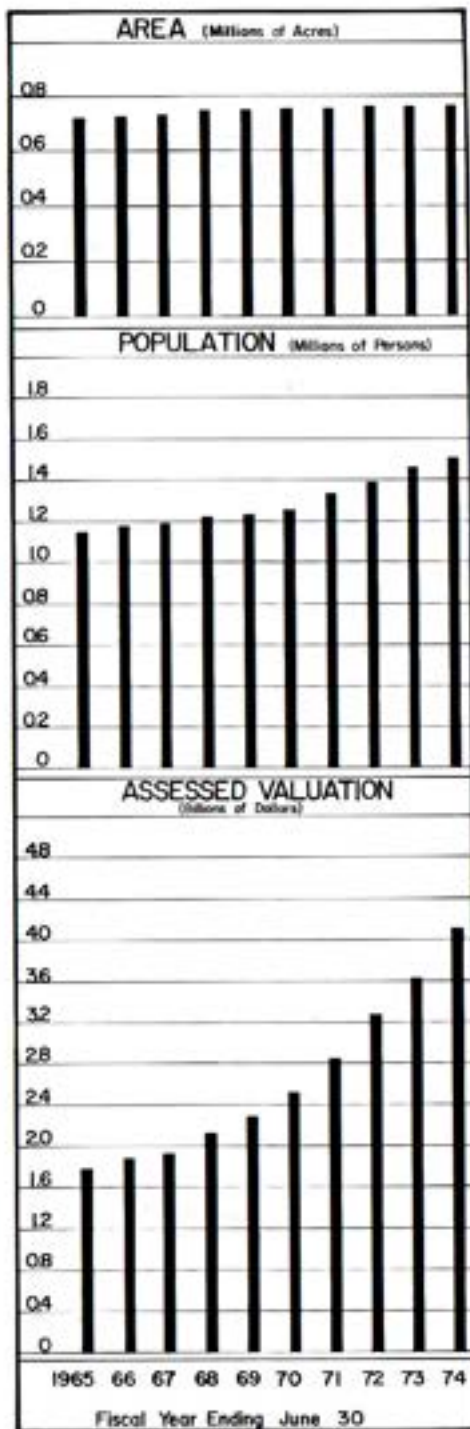
Administrative offices of the Authority are at 2750 Fourth Avenue, San Diego. Field Headquarters are located in the Fred A. Heilbron Operations Center at Fifth and Quince streets, Escondido.

At the end of the fiscal year, the Authority had a staff of 37. In addition, the Authority had 5 people working under the Comprehensive Employment and Training Act. This was the same number of permanent and four more temporary employees than the total at the end of fiscal year 1973-74. Of those employed at the end of the report year, nine persons were engaged in administration, engineering, and financial operations and nineteen persons in maintenance, stenographic and clerical positions. Another nine persons serve in new project engineering design, surveying and inspection.

## **WATER AUTHORITY COMPOSITION**

#### **Area**

After completion of the 713 acre Pilgrim Creek Annexation, the area within the Authority increased from 760,965 acres (1,189.8 square miles), to 761,678 acres (1,190.9 square miles). The annexation, a portion of the City of Oceanside's service area, was completed in August 1974.



Of the population living in San Diego County, 98 percent are within the Water Authority, which encompasses 28 percent of the total county area.

The boundaries of Authority member agencies overlap in some areas. Member agencies are encouraged to eliminate such overlaps by appropriate action. Overlapping occurs when incorporated cities annex neighboring areas already within another member agency.

Area changes and percentage of area of each agency are shown in Table 1. The City of San Diego comprises the largest area with 202,704 acres. The smallest area is the City of Del Mar with 1,082 acres.

A Statement of Change of Boundaries, which by State law must be filed by the Executive Secretary on or before December 31 each year, was filed with the Metropolitan Water District, the San Diego County Assessor and the State Board of Equalization. The 1974 statement showed 22 changes of boundaries by member agencies, of which one changed Authority boundaries. This statement is used by the County Assessor to determine total assessed valuation within the Authority and is the basis on which the Board levies taxes each August.

**Assessed Valuation**

The assessed valuation of all taxable property within the Authority, both secured and unsecured, is determined by the San Diego County Assessor. The assessed valuation he reports and the Authority's budgetary requirements provide the basis for determination of the tax rate by the Board.

The assessed valuation within each member agency determines the number of directors and the total number of votes to which the agency is entitled. The County Auditor certified to the Authority the assessed valuation of taxable property for the 1974-75 tax levy was \$4,775,761,282, an increase of \$661,380,800, or 16.1% over 1973-74. Assessed valuation for 1975-76, received from the County Auditor, shows taxable property within the Authority has been assessed at \$5,415,953,304, an increase of \$640,192,022 or 13 percent. The average assessed valuation of property within the Authority has increased from \$5,403 per acre in 1973-74 to \$6,270 per acre in 1974-75. The assessed valuation within each member agency, the total for the Authority and the total for San Diego County are shown in Table 4.

**Population**

The area served by the Authority continues to be one of the fastest-growing regions in the United States. It had an estimated population of 1,527,520 at the close of the fiscal year. Population growth within the Authority is shown in Table 2. Population figures within the member agencies are shown in Table 3.

The City of San Diego has the largest area in the Authority and contains 772,600 people or 52 percent of the total population of the Authority. De Luz Heights Municipal Water District has the lowest population density with nine persons to the square mile and the smallest total population of 170 people. The highest average population density exists in the City of La Mesa, part of Helix Water District, with 8.41 persons per acre.

Average population density of the entire Authority area is now 2.01 per acre, or 1,283 persons per square mile.

**WATER SUPPLY AND CONSUMPTION**

**Source**

At present, the entire water supply of the San Diego County Water Authority comes from the Colorado River through facilities of the Metropolitan Water District of Southern California (MWD). As a result of taxes and annexation charges paid to MWD, the Authority has a preferential right to 13 percent of Metropolitan's total supply. (Water purchases earn no preferential rights.) Preferential right has never been invoked by MWD as the basis for deliveries.

**MWD Facilities**

MWD diverts water from the Colorado River Aqueduct into the San Diego Aqueducts near San Jacinto. The Authority accepts delivery at a point approximately six miles south of the San Diego-Riverside county line.

First water was delivered into Lake Skinner, a new reservoir on the San Diego Aqueducts near Rancho California, in April 1973. In January 1974, Lake Skinner was filled to its capacity of 44,000 acre feet at an elevation of 1,479 ft. This storage serves only the Third and Fourth Pipelines. The San Diego Canal, with a capacity of 1,000 cubic feet per second (cfs), delivers Colorado River water to Lake Skinner. This canal will also serve as a portion of the transmission system from Perris Lake, terminal reservoir of the California Aqueduct, to Lake Skinner when northern water is introduced into the San Diego Aqueduct system. This is expected to occur about April, 1977.

#### Authority Facilities

The Authority takes delivery of water from MWD in the four pipelines of the two San Diego Aqueducts at a point approximately six miles south of the Riverside-San Diego county line, near Rainbow.

The First Aqueduct terminates in San Vicente Reservoir, which is owned and operated by the City of San Diego. The Fallbrook-Oceanside Branch connects to the First Aqueduct at Rainbow. The Authority operates and maintains this Branch from Rainbow to Morro Reservoir, which is approximately 12.5 miles in length. The La Mesa-Sweetwater Branch extends from the First Aqueduct at Slaughterhouse Canyon through Lakeside, El Cajon and La Mesa to its terminus at Sweetwater Reservoir. The two pipelines of the First San Diego Aqueduct share common tunnels and inverted siphons, and are operated as one unit.

The two pipelines of the second aqueduct, although in a common right of way for most of their length, do not share any facilities in San Diego County, and are operated separately. Pipeline 3 terminates in Lower Otay Reservoir. Pipeline 4 ends at Miramar Reservoir. An extension of Pipeline 4, the Pomerado Pipeline, extends the Authority system to the Tierrasanta section of the City of San Diego. A crossover pipeline carries water from the Second Aqueduct at Twin Oaks Valley to the First Aqueduct north of Escondido.

The Water Authority operates a chlorination station at Rainbow Pass just north of the Riverside-San Diego county line. Flows in the First Aqueduct and in Pipeline 3 are treated at this point. A temporary chlorination station is located at Auld Valley, near Lake Skinner, to provide chlorination to the water in Pipeline 4.

The First San Diego Aqueduct (Pipelines 1 and 2) has a capacity of 196 cfs. Pipeline 3 has a capacity of 250 cfs. Pipeline 4 has a capacity of 380 cfs.

The Authority does not own or operate any storage facilities. It does, however, have a contractual right to store up to 40,000 af in San Vicente Reservoir. This is the result of an agreement with the City of San Diego which was renewed December 13, 1973. Under this agreement, the City is paid \$2.20 per acre foot for the maximum amount of water in storage each year, plus \$0.50 per acre foot to cover pumping costs for water transferred from storage to the City. The agreement further provides that the first of any water which might be lost over the spillway would be that stored by the Authority. During the fiscal year, a total of 28,289 af was placed in San Vicente Reservoir by the Authority for the account of its member agencies. A total of 17,000 af was withdrawn, and 983.3 af was lost by evaporation. The net result of this year's activities was an increase of 10,305.7 af from 20,338 af in storage on June 30, 1974, to 30,644.1 af in storage on June 30, 1975. San Vicente storage statistics are shown in Table 11. Rainbow MWD had the largest amount credited to its account at year's end, totaling 6,680.2 af, or nearly 22 percent of all Authority water stored in San Vicente.

Another Authority-City of San Diego agreement permits the storage of up to 2,500 af in the City's Lower Otay Reservoir, terminus of Pipeline 3. Storage here is for operational purposes only. Water is transferred to the City when it requests water at this location. No storage for member agencies is provided. The City is paid \$1.00 per af for the maximum amount of storage in any 12-month period or fraction thereof. A minimum annual fee of \$1,000 is paid to the City. The Authority also pays pumping charges, which vary from \$1.50 to \$2.25 per acre foot depending on the elevation of water in the reservoir. The City prefers to have water delivered directly to its Lower Otay treatment plant at the required rate rather than into the reservoir. Close control is exercised by the Authority personnel to prevent spillage.

The Authority also has the right to store up to 3,000 af in Lake Poway under similar terms with the exception that no evaporation is charged for Authority-stored water.

The City of Escondido requested the Authority store 1,200 af of water in Dixon Reservoir for purchase by the City during the following fiscal year. Storage was begun on February 20, 1975 after a motion was passed at the February Board of Directors meeting approving the request. Under the terms of the agreement, the City of Escondido will absorb all losses and will receive all water stored by the end of the ensuing fiscal year.

Telemetry and supervisory control of the San Diego Aqueduct system is maintained from the Fred A. Heilbron Operations Center, Escondido. Rates of flow from MWD and service to member agencies are monitored from this facility. Communications with Metropolitan's East Valley Operations Section unit at Lake Skinner is maintained by two-way radio.

**Deliveries and Rates**

The four pipelines of the San Diego Aqueducts delivered a total of 388,485 af during the fiscal year, as compared to 337,800 af during the previous year. This was an increase of 50,605 af for the year.

Lowest rates of flow, 300 cfs, occurred in April 1975. Simultaneously with an MWD shutdown, Pipeline 3 was shut down for three days to replace a valve damaged during construction of Pipeline 4. Replacement was necessary before introduction of treated water into the line. Lowest average flow of 374 cfs was also in April. Total deliveries from the Aqueducts during that month were 17,936.5 af, up 3,156.5 af from the previous fiscal year's low month, January 1974.

Highest peak flows occurred in July 1974, as did the highest average flows. A peak of 704 cfs and an average of 689 cfs were the highest ever recorded by the Water Authority. The previous high average, recorded in July 1973, was 661 cfs. Total deliveries during July 1974 were 42,391 af, also a new record. The previous high month for deliveries, July 1973, saw 40,623 af flow through the aqueducts.

Water deliveries to member agencies are shown in Table 5. The agencies purchased 368,033.4 af during the year, 40,257.4 af more than during the 1973-74 fiscal year. Of the 30,109.2 af placed in storage by the Authority, 17,910.7 af were withdrawn, 12,198.5 af remained in storage at the end of the fiscal year.

Annual water sales to individual member agencies for the eight-year period 1967 to 1975 are shown in Table 6. Also shown are the total sales of water during the period 1947-1967. Sales during the fiscal year covered by this report show an 11.9% increase from 1973-74.

Operation and maintenance of Authority facilities is financed from a surcharge added to the MWD water price, plus other miscellaneous revenues. During the 1974-75 fiscal year, this surcharge was \$1.25 per acre foot. From 1947 to August 1964, the surcharge was \$2.00 per acre foot; since September 1964, it has been \$1.25.

Capital outlay requirements have traditionally been financed by the sale of general obligation bonds, and tax revenues have provided approximately one-half the bond service requirement. The tax rate during fiscal 1974-75 was 11¢ per \$100 assessed valuation.

The Metropolitan Water District announces its water rates approximately two years in advance. MWD has increased its water rates each year except 1974 and further annual increases are scheduled. During the 1974-75 fiscal year, the MWD rate for unfiltered municipal and industrial water was \$56.00 per acre foot. Addition of the Water Authority surcharge brought the total rate to Authority member agencies to \$57.25.

For several years, MWD has priced State Project water higher than Colorado River supplies. This difference, which has been \$12 will be \$10 during the 1975-76 fiscal year and \$6 during the 1976-77 fiscal year. In July 1977, the differential is planned to be eliminated. State Project water is expected to be introduced into the Water Authority system in April 1977.

A summary of past and announced MWD and Authority rates follows:

**SUMMARY OF WATER RATES**  
(Dollars Per Acre Foot)

From	To	MWD	Authority	Total	Agricultural Rebate	Resulting Agricultural Rate
7/1/58	1/1/61	15.00	2.00	17.00	3.00	14.00
1/1/61	1/1/62	17.00	2.00	19.00	4.25	14.75
1/1/62	1/1/63	19.00	2.00	21.00	5.50	15.50
1/1/63	1/1/64	21.00	2.00	23.00	6.75	16.25
1/1/64	7/1/64	24.00	2.00	26.00	9.00	17.00
7/1/64	9/1/64	25.00	2.00	27.00	9.75	17.25
9/1/64	7/1/65	25.00	1.25	26.25	9.75	16.50
7/1/65	7/1/66	28.00	1.25	29.25	12.00	17.25
7/1/66	7/1/67	31.00	1.25	32.25	14.00	18.25
7/1/67	7/1/68	34.00	1.25	35.25	16.00	19.25
7/1/68	7/1/69	37.00	1.25	38.25	18.00	20.25
7/1/69	7/1/70	40.00	1.25	41.25	20.00	21.25
7/1/70	7/1/71	44.00	1.25	45.25	23.00	22.25
7/1/71	7/1/72	48.00	1.25	49.25	26.00	23.25
7/1/72	8/13/73	52.00	1.25	53.25	28.50	24.75
8/13/73	7/1/75	56.00	1.25	57.25	31.00	26.25
7/1/75	7/1/76	58.00	1.25	59.25	33.00	26.25
7/1/76	7/1/77	62.00*	2.00*	64.00*	33.00*	31.00*

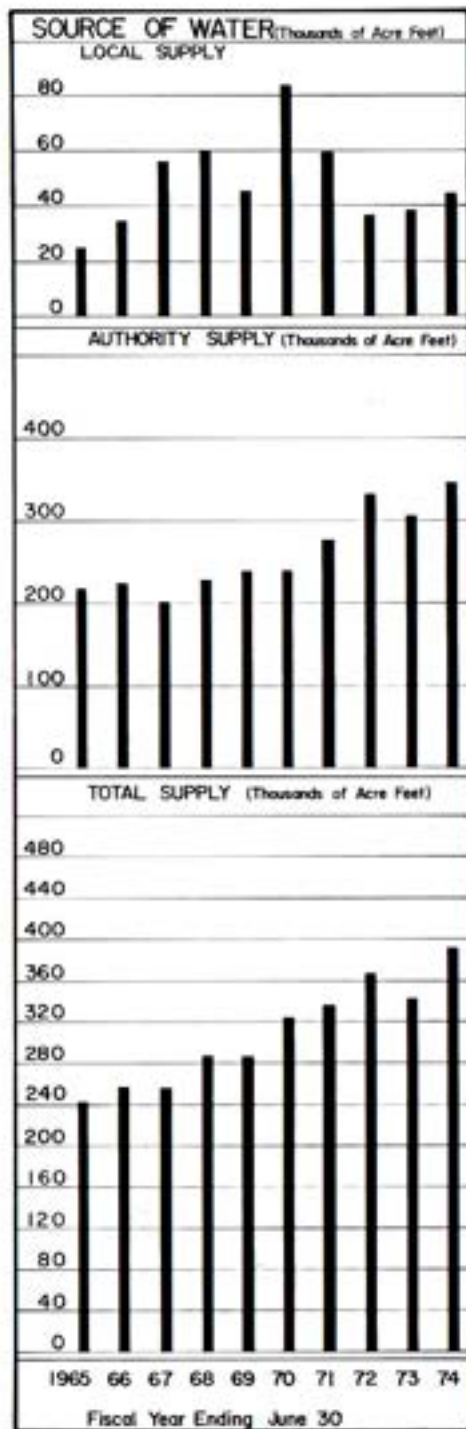
NOTE: Above summary of water rates reflects pricing structure for Colorado River water only.

\*Subject to change

As shown in the Water Rate Summary, agricultural water users receive a rebate from MWD. To obtain the rebate, the Authority certifies to MWD the quantities of water used for agriculture. Rebates granted the Authority are paid in full to the member agencies. The agencies in turn credit the rebates to the agricultural users.

**Water Production of Member Agencies**

"Water Production" is the phrase used to describe the quantity of water an agency produces from all its sources to meet the demands of its consumers. Included are the losses that occur between the source of supply and the consumers. These losses result from breaks, evaporation from distribution reservoirs and normal operating waste. Impounding reservoirs, wells and the Authority system are considered sources of supply.



The total water production of the 22 member agencies is shown in Table 7. A 1.5 percent decrease in total water production occurred from 390,502 af in 1973-74 to 384,457 af in 1974-75. Highest monthly production was in July 1974, when 46,811 af were used. This was only 95 af less than the August 1972 production, which remains the record high water production month. April 1975 had the lowest production during the year, with 17,936.5 af. Compared to January 1974, lowest month of the previous year, this was an increase of 246.5af.

Rainfall for the year was higher than normal at Lindbergh Field, where 10.65 inches were recorded, 110 percent of average rainfall. Lake Cuyamaca received only 94 percent of the normal rainfall, with 35.48 inches. Lake Henshaw received 23.35 inches, 86 percent of normal rainfall.

The wells in Pauma Valley produced 1,606 af for the several agencies within Yuima Municipal Water District. The San Luis Rey River system and the Warner Ranch wells owned by the Vista Irrigation District, a sub-agency of Buena Colorado MWD, produced 7,520 af for distribution within Buena Colorado and the City of Escondido. California American Water Company produced approximately 1,897 af of local water within its service area, which includes National City and South Bay Irrigation District. Helix Water District used 2,736 af of local water including 100 af from wells in the El Monte Basin. The most extensive reservoir system within the Water Authority is that of the City of San Diego. This system produced 12,984.8 af of local water during the fiscal year, including 6,304.2 af delivered for use in areas outside the Authority. Detailed statistics on agency water production are contained in Table 8. Water production per acre and per capita is shown in Table 9.

## SAN DIEGO COUNTY WATER AUTHORITY WATER PRODUCTION

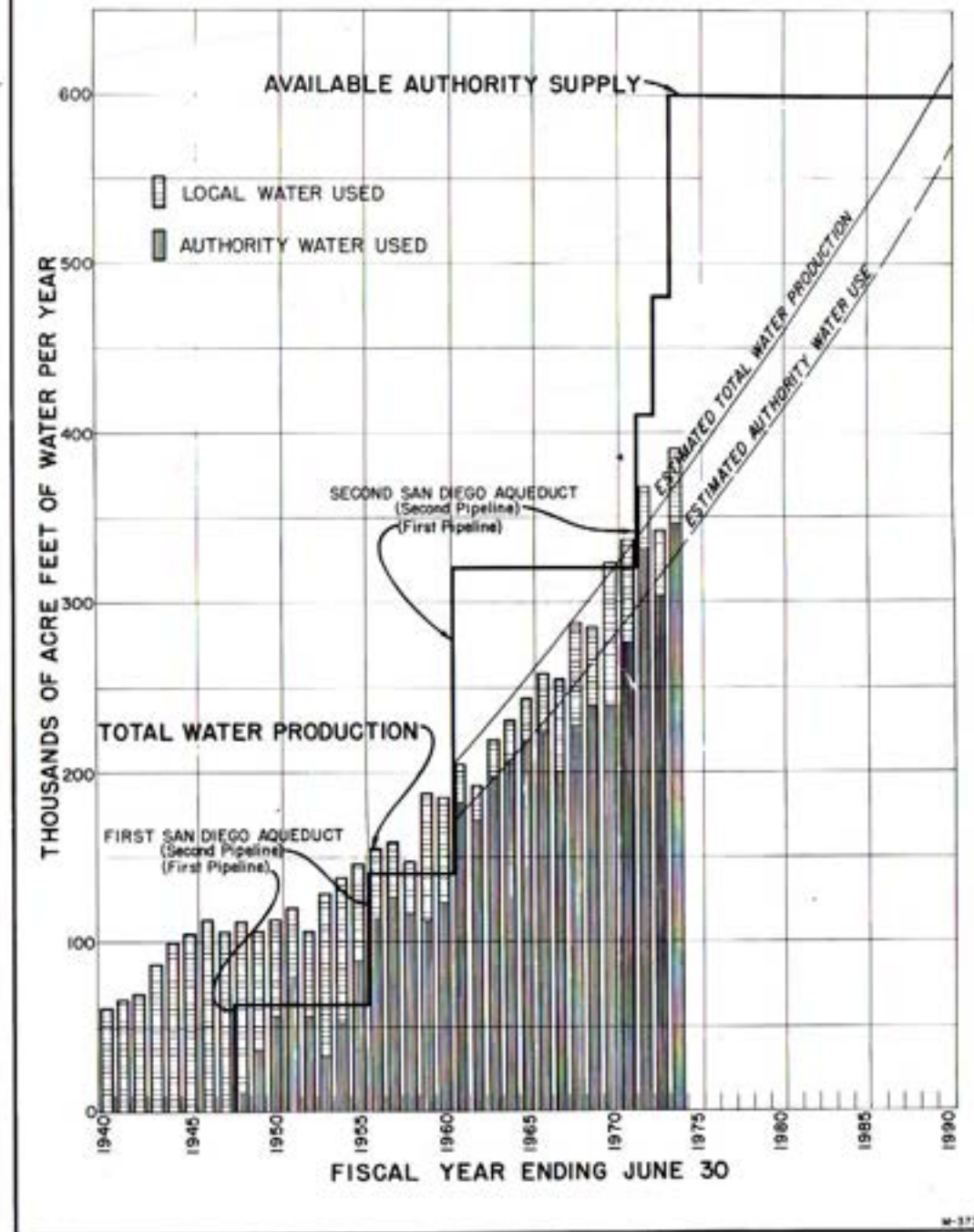


Figure B. Water Production of Authority Member Agencies

Water systems of member agencies are serving an estimated 470,670 acres, about 62% of the 761,678 acres within the Authority. The volume of water used per year per acre varies a great deal within the state of development, type of soil, kind of crop and other land use factors.

Figure B shows the combined water production of Authority member agencies. Columns representing annual production are shaded to indicate the proportion of water obtained from local sources and that supplied by the Authority. The chart shows the generally expanding use of imported water and the year-to-year changes in the quantity of local water used.

Projections of future water production are based on the assumption that additional water will be available when needed. Authority staff projections indicate present facilities are adequate to meet demands for water until approximately 1985. Pipeline 5 may be required prior to this date if treated water demands necessitate utilizing Pipeline 4 for treated water, which would in turn limit raw water delivery capacity.

#### Agricultural Water Use

Water used for agriculture was 24.8 percent of the total of 378,152.8 af produced by Authority agencies. MWD provides a reduced rate for imported water used for agriculture. This rebate is \$31 per af. The amount credited justifies extensive record keeping and reporting by member agencies and the Authority. To receive credit, each agency must certify to the Authority the total quantity of water used for agriculture. These quantities are shown in Table 10. Valley Center MWD had the highest proportionate use of agricultural water at 99.4 percent.

#### Water Quality

Chemical constituents of the dissolved solids in aqueduct water are shown in Tables 12 and 13. This analysis is based on samples taken at Lake Skinner by the Metropolitan Water District and tested at the F. E. Weynouth Filtration Plant in La Verne. Total hardness ranged from a high of 342 parts per million (ppm) to a low of 325 ppm. The hardness was based on ppm equivalent of calcium carbonate. Water temperature varied from a low of 51° F. recorded in January to a high of 79° F. reported in August.

#### Water Treatment

Throughout the year, Authority water continued to meet the bacteriological quality standards established by the United States Public Health Service Drinking Water Standards of 1962.

The Authority controls algae growth in pipelines through a program of continuous chlorination. The rate of chlorine application by the Authority during the year ranged from 1 to 1.50 ppm depending on chlorine demand, temperature of the water and other variables. Leak detector and automatic shutoff valve systems provide protection against chlorine leakage. The Rainbow Pass chlorination station serves Pipelines 1, 2 and 3. A temporary station in Auld Valley serves Pipeline 4.

Several Authority member agencies serve areas devoted primarily to agriculture. Because Colorado River water has met State and Federal health standards with simple chlorination, some agencies have distributed water without additional treatment. The practice has been to require dual chlorination, with a time interval of at least one-half hour between applications.

Member agencies serving urban areas have, in most cases, provided for water filtration. Seven filtration plants are now in operation within the Authority providing filtered water to eight member agencies: the cities of San Diego, National City and Del Mar; San Dieguito, Santa Fe and South Bay Irrigation Districts, Helix Water District; and Poway Municipal Water District.

The California Department of Public Health has indicated it will require complete treatment, which includes coagulation, sedimentation, filtration and chlorination, of State Project water before delivery for domestic consumption. Early in 1969, "The Filtration Study Group" was formed by representatives of several member agencies to determine how complete treatment of water could be best provided. The report issued by this group concluded the most desirable approach to the problem would be to ask the Metropolitan Water District to provide filtered water in Pipeline 3. Subsequently, other agencies indicated their wish to receive such service. In response, the Authority Board of Directors requested MWD to construct a treatment plant with an initial capacity of 150 million gallons a day (mgd) at Lake Skinner. MWD authorized the plant, and construction is under way. Completion is expected in June 1976.

The Staff - Montgomery report titled "SDCWA - Filtered Water Distribution Study" received officially by the Board in April 1974 is now in the process of implementation. Activities related to this study include:

- Agreements for providing treated water to the Authority from the City of San Diego, Helix Water District and Poway Municipal Water District are currently being negotiated.

- Design and construction of facilities to distribute treated water are under way.

- A rate schedule to pay treatment costs, divided into O & M and capital expenses, has been formulated.

Delivery of treated Colorado River water is expected to begin about June 1976 when the Skinner Plant is scheduled to be completed. A 50-50 blend of Colorado River and State Project water is expected to be introduced into County Water Authority pipelines from Lake Skinner during 1977. Raw blended water will be transported to existing treatment plants in the county through Pipeline 4 and the treated water from the Skinner plant will be transported in Pipeline 3. Pipelines 1 and 2 will continue to carry raw Colorado River water as far south as the Crossover connection near Escondido. The Crossover will replenish the line with raw blended water.

The treated water rate schedule will be in the form of a capacity charge and a commodity charge. The total of these charges must cover all costs for water treated for the Authority by the City of San Diego, Poway Municipal Water District, Helix Water District and Metropolitan Water District. These rates will be set annually by the Authority Board by January for the following fiscal year.

Preliminary environmental studies were completed and received by the Board in April 1974. The final environmental impact report for the Authority's filtered water distribution system improvements was approved at the February 1975 meeting.



from the Colorado River, the MWD-State contract was amended to increase Metropolitan's entitlement to State water by 500,000 acre feet per year. Annexations and other changes have brought the total MWD contract to 2,011,500 acre feet annually.

The California Aqueduct, key water supply feature of the State Project, was officially dedicated May 18, 1973. Water from this system is available to MWD at several points, and is expected to be available to the Authority in January 1977. State Project water for San Diego County will be delivered to MWD at Lake Perris, terminus of the 444-mile California Aqueduct. It will flow through the Lakeview Pipeline, which parallels the Colorado River Aqueduct but moves water in the opposite direction. At the existing canal turnout for the Second San Diego Aqueduct, the northern water will be mixed with Colorado River water, then flow south into Lake Skinner. This reservoir has been filled to capacity with water from the Colorado. After 1977, it is expected to hold a 50-50 blend from the two sources, with a gradual increase in the proportion of northern water.

Originally forecast as adequate to meet the needs of MWD member agencies until 1990, water supplies from these two sources are now expected to meet demands until 2010 or 2020. By that time, population of the District is expected to increase from its present 11 million to 20 million.

For the period beyond that date, when additional supplies may be required, investigations are being made of many possible supplementary sources. The Authority, MWD, the State of California, the Federal government and many private organizations are evaluating the potentials of the undeveloped rivers of northern California, the Columbia River, rivers in Canada and Alaska, waste water reclamation, weather modification, geothermal water development, sea water conversion and other possibilities.

Figure B shows the increase in water requirements within the Authority since 1940.

## DESIGN AND CONSTRUCTION

On June 7, 1966, during the same election in which Metropolitan Water District voters approved Proposition W for \$850,000,000 in bond funds to expand its distribution system to deliver State Project water, voters in the Authority area approved Proposition V for \$30,000,000 to assure distribution of the water throughout the local service area. The main features of this system have now been completed.

Major design activities during the year included the Tri-Agencies Pipeline and various facilities required to implement the Authority's treated water distribution plan.

The Tri-Agencies Pipeline design project resulted from an agreement between the Authority and Buena Vista Colorado Municipal Water District, Carlsbad Municipal Water District and the City of Oceanside. Work was started during the previous fiscal year and continued throughout the report year.

Design work associated with the treated water distribution program included facilities to transfer water from Pipeline 3 to Pipeline 4 and from Pipeline 4 to Pipeline 3; the Miramar Pumping Plant; Pipeline 4 extension to Alvarado Treatment Plant; pressure control facilities on Pipeline 3; the Helix Water District No. 3 service connection; the Escondido No. 3 service connection; and the interconnection with the Helix system to provide treated water to Otay Municipal Water District.

There were no major construction projects during the year.

## OPERATION AND MAINTENANCE

### General

*The Authority operates its aqueducts from the Fred A. Heilbron Operations Center at 610 W. Fifth Avenue, Escondido. From that location the Superintendent directs all operations and maintenance functions with a crew of 18 employees. Operation of the aqueducts which serve all member agencies, some with very small reservoir capacity, requires system operators to be on call around the clock. Telephone, two-way radio and telemetering equipment provide the necessary continuous communications throughout the service area.*

*The Aqueducts and related facilities require continuous routine patrol to cope with vandalism, watch for leaks, and inspect structures, gates, culverts and access roads. In addition to patrol vehicles, the field forces are provided with a variety of equipment, including road graders, bulldozers, compressors, welders and a well-equipped shop. Skilled personnel perform many tasks, including carpentry, painting, electrical, road building, construction and mechanical repair. Operating and maintenance personnel are dispatched by two-way radio. Base stations are located in San Diego, Escondido and at Lake Skinner, with a repeater station on Palomar Mountain. The Authority maintains 13 mobile units in operation, maintenance and construction.*

### General Activities

During the previous fiscal year Poway No. 3 Service Connection was started and was completed in February 1975. Olivenhain No. 2 Service Connection construction started

in July and was completed during May. This station cannot be placed in service until Olivenhain MWD completes the connection to its transmission line, which is expected to occur late in 1975. Fallbrook No. 6 Service Connection (designated San Diego No. 8 by MWD) was placed in operation on April 29. This station is on the portion of Pipeline 4 owned and operated by MWD and was built by MWD at the expense of Fallbrook PUD.

The Authority program of covering open vent structures continued through the year. The last of the covers for Pipelines 3 and 4 were fabricated and installed and work started on covers for Pipelines 1 and 2. At year's end the cover slabs for the Slaughterhouse Canyon Diversion Structure were about 85% complete.

Heavy rains during November revealed leaks in the chlorination station roof at Rainbow Pass. The roofing was removed and replaced during January. This was the first major problem with the roof since construction in 1960.

A new vehicle hoist was installed at the Escondido operations center garage to facilitate servicing of Authority equipment. A cover over the area used for heavy equipment servicing was built using material salvaged from the desalinization plant in Chula Vista and utilizing the men working under the Comprehensive Employment Training Act program.



*Extension of garage roof over heavy equipment repair area at Escondido Operations Center.*

Modifications of existing facilities to comply with the Occupational Safety and Health Act continued during the year. Ladder cages and platforms salvaged from the desalinization plant were used for this purpose.

The Engineering and Operations Committee field inspection of the aqueducts was made on May 22. Sixteen Directors and eight staff attended the tour which included the Escondido Operations Center, Escondido No. 3 Service Connection site, Poway No. 3 Service Connection, Slaughterhouse Diversion Structure which is currently being covered with concrete slabs, Helix No. 3 Service Connection site and along the route of the proposed Pipeline 4 Extension to the Alvarado Treatment Plant. Several stops at intermediate locations were also made.

The Colorado River Aqueduct was shut-down for a ten day period during January to permit routine cleaning and maintenance of the canal and siphons. No effect was noted in service to Authority agencies because of the presence of Lake Skinner, which was used to provide service during this shutdown.

Several tests were conducted on Pipelines 3 and 4 by MWD and the Authority, jointly. The results of the test on Pipeline 3 led to the inspection of the interior condition of the pipeline which revealed a roughness considered excessive and may be responsible for the low capacity test result of 255 cfs. Pipeline 4 test results of 501 cfs were very encouraging in a pipeline designed for 430 and 380 cfs. MWD proposes to clean the interior of Pipeline 3 and hopes to increase the capacity to 275 or 300 cfs. Cleaning is scheduled for winter of 1975-76.

In conjunction with the tests on Pipelines 3 and 4, a capacity test in the Crossover was also run and resulted in a flow of 165 cfs. This pipeline was designed for 130 cfs.



*Flow indicators with telemeter signal from service connection to Escondido Operations Center. Nearly one-half of the service connections are now controlled by this means.*



*Lake Skinner intake structure to Skinner Treatment Plant and Pipeline 4. Note screens over top level gates. Lake is down approximately five feet after shutdown of Colorado River Aqueduct; however, service to San Diego County remained unaffected because of availability of Lake Skinner water.*

## LEGAL DEPARTMENT

The legal department continued to furnish advice and representation as needed. No new litigation directly involving the Authority was commenced during the year. Routine review of appointments to the Board of Directors, actions taken by the Board, and annexations to the Authority were performed. Right of way problems continue to occupy considerable staff time.

The sum of \$25,595.91 was received during the year from the pipeline antitrust settlement which brings to \$1,796,495.08 the total received.

The Political Reform Act of 1974 (Proposition 9) approved by the voters of the state on June 4, 1974 became effective January 7, 1975. It sets forth in detail rules regarding conflicts of interest and lobbying by public officers including those of the Authority.

The San Onofre Nuclear Generating Station, a joint venture between Southern California Edison Company and the San Diego Gas & Electric Company, required a firm supply of fresh water. The State Park and Recreation Department desired to develop adjacent lands for a state park. Both are located on lands which are leased from Camp Pendleton in San Diego County near the City of San Clemente in Orange County. In August of 1974, The Metropolitan Water District of Southern California determined that these lands should be annexed to MWD within two years in order to continue receiving water from MWD. Extensive negotiations were undertaken between interested parties representing Coastal Municipal Water District, a member agency of MWD located in Orange County, the Tri-Cities Municipal Water District, located within Coastal, which included the City of San Clemente, the power plant joint venturers, and representatives of the military. The Authority Board desired to fulfill its obligation to furnish imported water to lands within San Diego County.

In April 1975 the MWD Board approved annexation of the lands to the Authority. Negotiations were still pending among the interested parties at year end. Efforts were being made to accomplish annexation of all the lands within the Naval Enclave, which includes Camp Pendleton, Fallbrook Naval Weapons Station, Regional Medical Center, and Marine Corps Air Landing Facility which comprise 135,000 acres. Special terms and conditions were being discussed which would provide water for the power plant, the state park, and a supplemental water supply for the military functions but it would not obligate service of water to those lands in the event that land use patterns would change in the future.

Plans to import blended state aqueduct and Colorado River water from MWD were still proceeding. A contract between the City of San Diego and the Authority whereby filtered water can be provided by the Authority was finalized. Negotiations with Helix Water District, California-American Water Company, an investor owned utility which serves the City of National City and the South Bay Irrigation District, and Poway Municipal Water District were being pursued to complete arrangements whereby all users of the blended water will have it properly filtered. The filtered water available for delivery by the Authority will come either from the Skinner Treatment Plant of MWD or from member agencies pursuant to contracts to be negotiated.

## TREASURER'S REPORT

The Treasurer is appointed by the Board of Directors, serves at their pleasure without remuneration, and is responsible for the funds of the Authority.

Acting under policies adopted by the Board of Directors, the Treasurer invests funds, deemed to be idle by the Director of Finance, in interest-bearing bank time deposits, in direct obligations of the Federal Government and in obligations of Federal agencies. The investments in Federal Agency securities are made only when there is no evidence of need for the funds prior to the maturity of the agency obligations.

In accordance with the Administrative Code, the Treasurer is to report to the Board of Directors in summary form the financial transactions under his control at the end of each fiscal year.

For the fiscal year ending June 30, 1975, income was received in the total amount of \$24,534,256. Disbursements during this same period totaled \$21,763,415. As of June 30, 1975, the Treasurer had under his control funds and investments totaling \$7,918,885.

Income received was in the following categories:

Sales of water	\$ 18,320,053	
Taxes	5,228,332	
Interest earned on investments	790,295	
Tijuana water service	129,638	
Miscellaneous	65,938	
Total Income		<u>\$ 24,534,256</u>

Disbursements were as follows:

Purchase of water	\$ 18,399,771	
Operation and maintenance	727,090	
Debt service, principal and interest	2,636,554	
Total Disbursements		<u>\$ 21,763,415</u>

As of June 30, 1975, the Treasurer's accountability for \$7,918,885 was on deposit as follows:

Demand deposit	\$ 58,885	
Time deposits	7,860,000	
Total		<u>\$ 7,918,885</u>

# METROPOLITAN WATER DISTRICT MEMBERSHIP

## General

The San Diego County Water Authority receives its entire supply of water from The Metropolitan Water District of Southern California, is a member agency of that District, and works very closely with it. A brief description of MWD's organization and operations may, therefore, be of interest to readers of this report.

MWD was organized in 1928 under the Metropolitan Water Districts Act, which had been enacted the previous year. The original act provided for membership by cities only, but it was later amended to permit the annexation of large water districts, also. The District now includes the original 13 cities, one city added in 1971, 12 municipal water districts, and the San Diego County Water Authority.

The legislative acts governing Metropolitan and the Authority are very similar. MWD policy is established by a board of directors. Each director is appointed by the chief executive officer of the agency he represents, with approval from its legislative body. Under present MWD rules, each member agency is entitled to one director, plus an additional director for each three percent of the total District assessed valuation which lies within the member agency's boundaries. Figure D lists the 27 member agencies of the District.

The Authority began and ended the fiscal year with five representatives on the Metropolitan Board of Directors.

Chairman Hans H. Doe, who has served on the MWD board for 15 years, was elected a Vice-Chairman of that board in January. He is also a member of the Executive, Water Problems, and Organization and Personnel committees.

Director Harry Griffen, an MWD board member for 12 years, was elected chairman of the Finance and Insurance Committee, and also serves as chairman of its Audit Subcommittee. He is also a member of the Water Problems Committee and the Special Committee on Charges and Payments Under the State Contract.

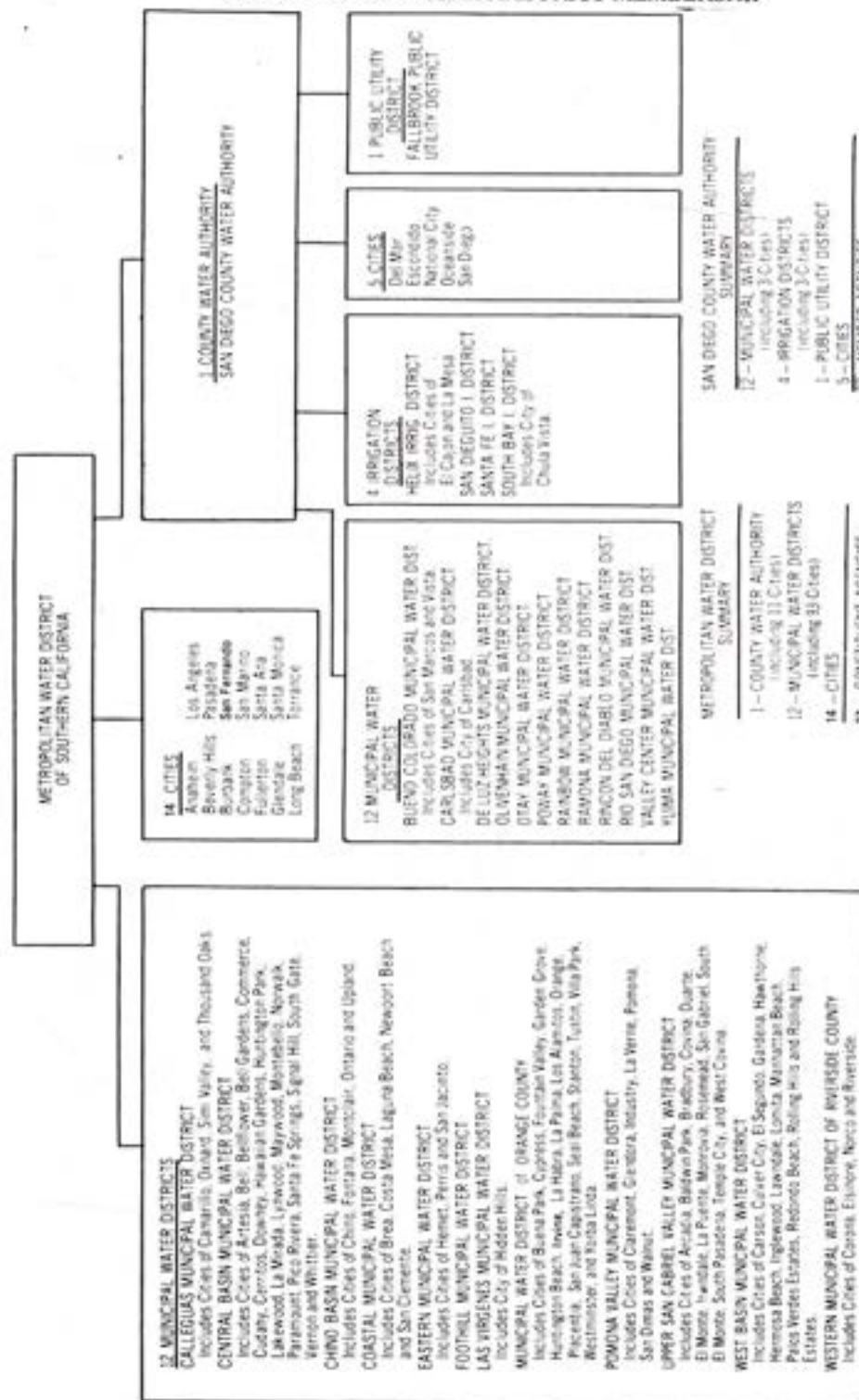
Director R. E. Badger, a two-year member of the Metropolitan Board, serves as a member of the Engineering and Operations, and Legal and Claims committees.

Director Lloyd L. Lee, who also has been an MWD director for approximately two years, is a member of the Finance and Insurance, and Land committees.

Director Ralph E. Graham resigned from the MWD Board in November and was replaced by Director John M. Cranston. Director Cranston has been assigned to the Engineering and Operations, and Legal and Claims Committees.

As of June 30, 1975, the Authority had a total of 424 votes out of 3,168, or 13.40 percent of the total voting strength of MWD. The representatives of each member agency is entitled to cast one vote for each ten million dollars, or major fraction thereof, of assessed valuation within the agency's boundaries. Each representative of an agency with a multi-member delegation is entitled to vote a fraction of the total votes of that agency proportionate to the number of representatives present.

# METROPOLITAN WATER DISTRICT MEMBERSHIP



COMPOSITION OF THE METROPOLITAN WATER DISTRICT OF SOUTHERN CALIFORNIA  
 JUNE 30, 1975  
 Figure D.

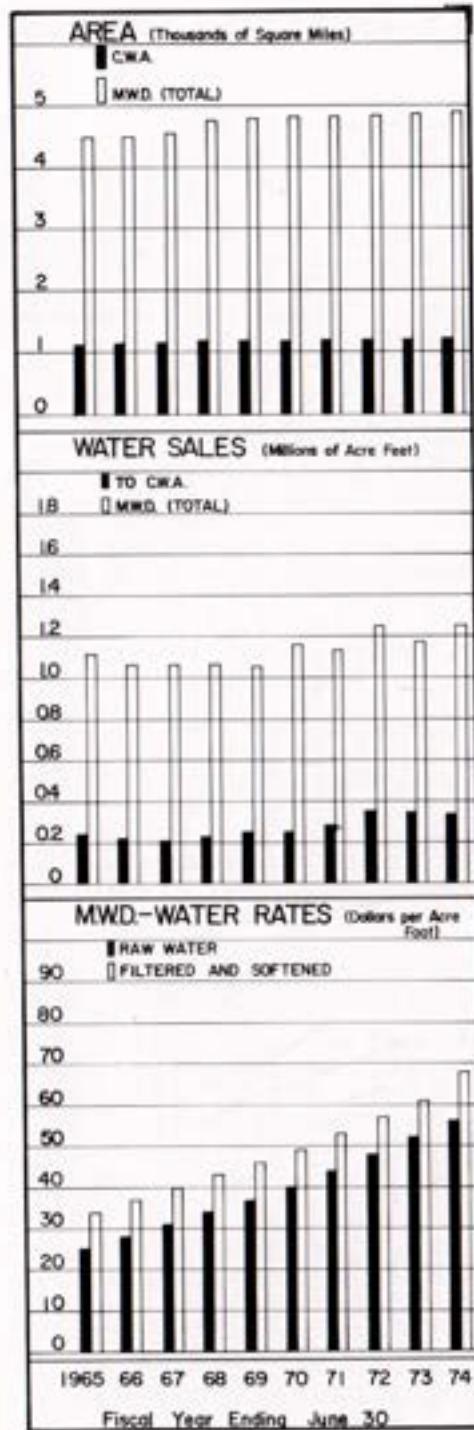


Figure E shows the Metropolitan Water District system and the areas it serves. Portions of Ventura, Los Angeles, Orange, Riverside, San Bernardino and San Diego counties are within the District. There are 124 incorporated cities within the MWD service area. During the year, 1,984 acres were annexed to MWD. As of June 30, 1975, District area equaled 4,890 square miles (3,129,664 acres), of which 1,190 square miles (761,678 acres) or 24 percent, lie within the boundaries of the Authority.

**Assessed Valuation**

Total assessed value of taxable property lying within the boundaries of the Metropolitan Water District, as determined by the several county assessors for use in levying 1974-75 taxes, was \$35,941,961,265. This was an increase of \$3,103,484,887, or 9.5 percent over the 1973-74 valuation of \$32,838,476,378. An amount of \$663,867,045, or 21.4 percent of this increase occurred within the Authority boundaries. Assessed valuation within the Authority is 13.3 percent of the MWD total.

**Water Sales**

A total of 1,329,132 af of water was delivered by MWD during fiscal year 1974-75. Of this amount 908,896 af was from the Colorado River and 420,236 was from the California Aqueduct. The Authority, which can receive only untreated Colorado River water at present, took 378,082 af, 28.4 percent of the MWD total and 41.6 percent of the Colorado River supply.

Metropolitan operates three water treatment plants. The F. E. Weymouth Softening and Filtration Plant at La Verne has a 400 mgd capacity. The Robert B. Diemer Filtration Plant at Yorba Linda also has 400 mgd capacity. The Joseph Jensen Filtration Plant at Granada Hills, which can be supplied water only from the West Branch of the California Aqueduct, has an initial rated capacity of 200 mgd. The Authority cannot be served from any of these plants.

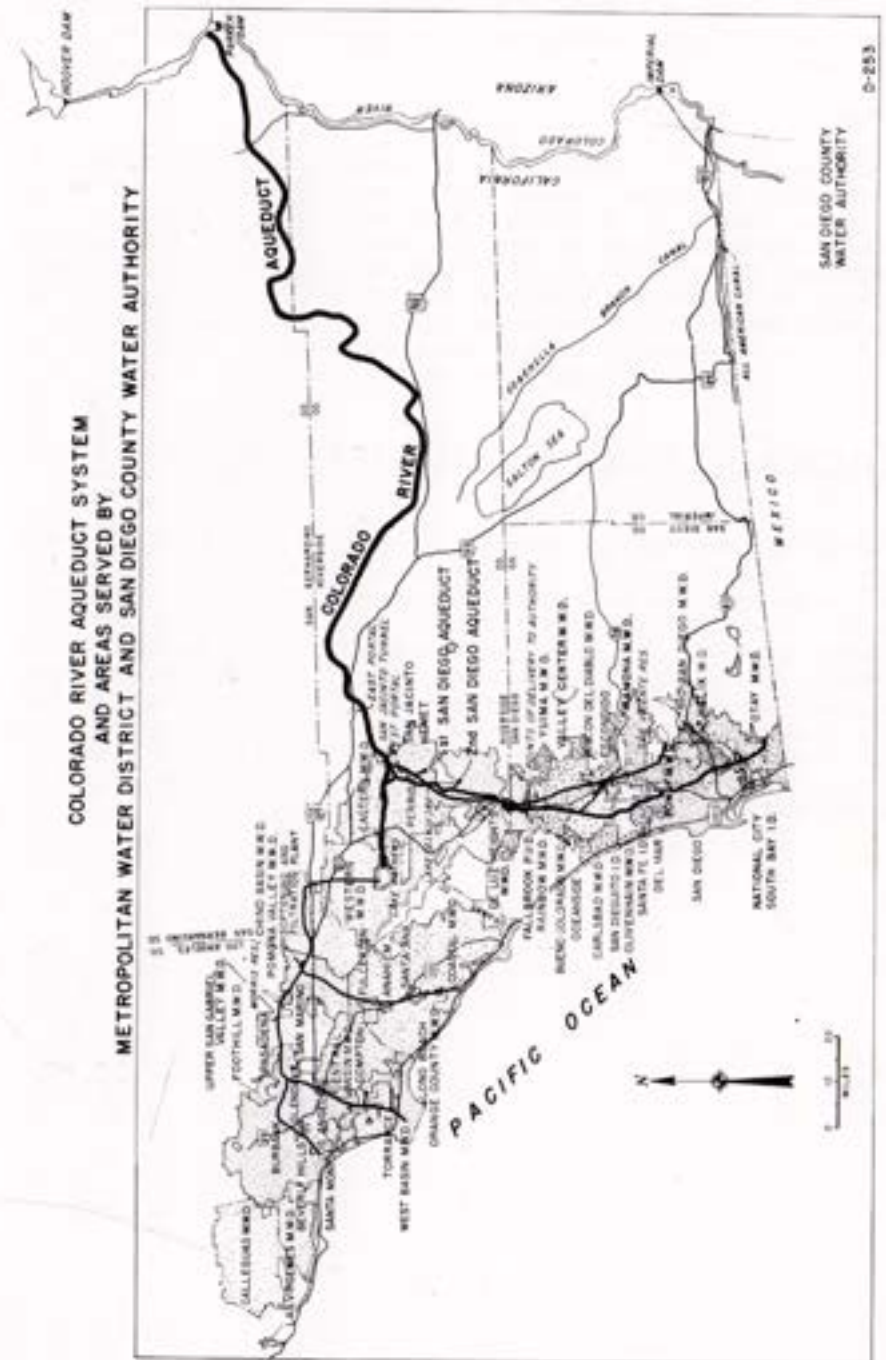


Figure E. Water Systems of Metropolitan Water District and San Diego County Water Authority

The Robert A. Skinner Filtration Plant, now under construction near Lake Skinner, is scheduled for completion in early summer, 1976. It will provide a portion of the filtered water needed by the Authority to serve its member agencies. It will have an initial capacity of 150 mgd.

#### Tax Rate

During fiscal year 1974-75, MWD maintained its tax rate at 14 cents per \$100 of assessed valuation. When the Authority annexed to MWD in 1946, the tax rate was 50 cents per \$100 assessed valuation. The tax rate for each year from that time is shown in Table 19. The total MWD tax levy during the report year, including regular and special taxes was approximately \$59,059,089, of which \$7,431,253, or 12.58 percent, was levied against property within the Authority. Special taxes are levied when an area annexing to the District decides to amortize its annexation fees over a 30 year period. As of the fiscal year's end, Authority member agencies had assumed annexation fee liability totaling \$27,653,129, of which \$15,390,609 had been paid by the end of the fiscal year.

## COLORADO RIVER BOARD MEMBERSHIP

The Colorado River Board of California is an agency of the State devoted to the protection of the California agencies' rights to Colorado River water. Six agencies are represented on the Board: San Diego County Water Authority, Metropolitan Water District, City of Los Angeles Department of Water and Power, Imperial Irrigation District, Coachella Valley County Water District, and Palo Verde Irrigation District. Director Raymond E. Badger is the Authority's representative. Once fully financed by the State, the Board now receives only one-third of its support from that source. The remainder is financed by the six agencies: 44½ percent by Metropolitan Water District; 28½ percent by Los Angeles Department of Water and Power; 19 percent by Imperial Irrigation District; five percent by Coachella Valley Water District; two percent by San Diego County Water Authority; and one percent by Palo Verde Irrigation District.



*Robert A. Skinner Treatment Plant looking northeasterly towards Lake Skinner. Note dam in background. (Photo courtesy of Metropolitan Water District.)*

INDEX TO TABLES  
APPENDIX A - STATISTICAL TABLES

	Table No.	Page
Agricultural Use of Water—Fiscal Year 1974-75 .....	10	52
Allocation of Right to Purchase Authority Water .....	14	56
Analysis of Colorado River Aqueduct Water .....	13	55
Annexation Charges, Assessments and Balances .....	18	60
Area—Authority Member Agencies .....	1	42
Assessed Valuations—Authority Member Agencies and County ....	4	45
Assessed Valuations and Tax Rates .....	16	58
Assessed Valuations and Tax Rates of the Metropolitan Water District .....	19	61
Authority Storage in San Vicente Reservoir .....	11	53
Chemical Character of Natural Colorado River Water .....	12	54
Metropolitan Water District Annexation Charges, and Balances on Authority Areas .....	20	62
Population—Authority Member Agencies and County .....	3	44
Population Growth—County and Authority Area .....	2	43
Sales of Colorado River Water—Fiscal Year 1974-75 .....	5	46
Tax Assessments and Tax Collections .....	15	57
Tax Levies and Tax Collections .....	17	59
Unit Water Production—Per Acre and Per Capita .....	9	51
Water Production—Metropolitan Water District Constituent Areas .....	22	64
Water Production of Authority Agencies—1974-75 .....	8	50
Water Production Within Authority Agencies: Fiscal Years 1965-66 to 1974-75 .....	7	49
Water Sales—1947-75 .....	6	48
Water Sales by Metropolitan Water District .....	21	63

APPENDIX B - FINANCIAL REPORT

Auditor's Report .....	67
Balance Sheet .....	68
Bonded Debt Maturities .....	79
Changes in Equity and Fund Balances .....	72
Changes in Financial Position .....	71
Income and Expenses .....	70
Notes to Financial Statements .....	74
Operating Expense .....	78

SAN DIEGO COUNTY WATER AUTHORITY

Table 1  
AREA - AUTHORITY MEMBER AGENCIES

Member Agencies	As of 6/30/74 (acres)	Area Within Authority Changes		As of 6/30/75 (acres)	Percent of Total Authority Area 6/30/75	
		(1)	(2)			
Buena Colorado M. W. D. ....	48,868	(1)	-85	(2)	48,783	6.41
In City of San Marcos .....	(8,960)		0		(8,960)	(1.18)
In City of Vista .....	(7,600)		0		(7,600)	(1.00)
Carlsbad M. W. D. ....	20,215		-2	(3)	20,213	2.65
In City of Carlsbad .....	(17,340)		+(1,486)		(18,826)	(2.47)
Del Mar, City of .....	1,082		0		1,082	0.14
De Luz Heights M. W. D. ....	11,830		0		11,830	1.55
Escondido, City of .....	(11)12,266		+101		12,367	1.62
Fallbrook Public Utility District..	15,759		+10		15,769	2.07
Helix Water District .....	31,495		0	(4)	31,495	4.14
In City of El Cajon .....	(7,926)		+(2)		(7,928)	(1.04)
In City of La Mesa .....	(5,021)		+(4)		(5,025)	(0.66)
National City, City of .....	5,419		0		5,419	0.71
Oceanside, City of .....	24,573		+794		25,367	3.33
Olivenhain M. W. D. ....	27,408		-41	(5)	27,367	3.59
Otay M. W. D. ....	63,895		0	(6)	63,895	8.39
Poway M. W. D. ....	22,889		0		22,889	3.01
Rainbow M. W. D. ....	47,099		-10	(10)	47,089	6.18
Ramona M. W. D. ....	47,578		0		47,578	6.25
Rincon del Diablo M. W. D. ....	17,372	(1)	-97	(7)	17,275	2.27
Rio San Diego M. W. D. ....	54,213		0	(8)	54,213	7.12
San Diego, City of .....	202,704		0		202,704	26.61
San Dieguito Irrigation District ..	5,597		+40		5,637	0.74
Santa Fe Irrigation District .....	10,197		+3		10,200	1.34
South Bay Irrigation District .....	15,571		0	(9)	15,571	2.04
In City of Chula Vista .....	(12,570)		+(37)		(12,607)	(1.66)
Valley Center M. W. D. ....	62,122		0		62,122	8.16
Yuima M. W. D. ....	12,813		0		12,813	1.68
<b>Total Authority Area .....</b>	<b>760,965</b>		<b>+713</b>		<b>761,678</b>	<b>100.00</b>
<b>San Diego County .....</b>					<b>2,725,100</b>	

- (1) Includes area annexed by an adjacent city member agency but still in district, being an overlapping area and considered here as being part of the city.
- (2) Does not include 2,794 acres overlapping in City of Oceanside and 289 acres overlapping in City of Escondido.
- (3) Does not include 34 acres overlapping in City of Oceanside.
- (4) Does not include 21 acres overlapping in City of San Diego.
- (5) Does not include 5 acres overlapping in City of San Diego.
- (6) Does not include 726 acres overlapping in City of San Diego.
- (7) Does not include 9,385 acres overlapping in City of Escondido and 39 acres overlapping in City of San Diego.
- (8) Does not include 12 acres overlapping in City of San Diego.
- (9) Does not include 297 acres overlapping in City of San Diego and 645 acres overlapping in City of National City.
- (10) Does not include 701 acres overlapping in City of Oceanside.
- (11) Area of City of Escondido corrected per planning department.

TABLES

Table 2  
POPULATION GROWTH-COUNTY AND AUTHORITY AREA

Year (as of April 1)	1910 to 1975 (Includes Resident Military Personnel)					
	COUNTY		AUTHORITY		Percent of County Population in Authority	
	Total Population (1)	Average Annual Growth	Total Population	Average Annual Growth		
1910 .....	61,665					
1920 .....	112,248	5,058				
1930 .....	209,659	9,741				
1940 .....	289,348	7,969				
1946 .....	502,804		(3)	440,659	2,807	88
1950 .....	556,808	42,478	(2)	451,886	50,083	81
1955 .....	709,200		(4)	702,300	50,820	91
1960 .....	1,033,010	52,762	(2)	956,400	50,820	93
1965 .....	1,194,000		(4)	1,150,000	38,720	96
1970 .....	1,310,800	23,360	(5)	1,255,000	21,000	96
1971 .....	1,397,700		(4)	1,334,700	79,700	95
1972 .....	1,475,000	86,900	(5)	1,391,000	56,300	94
1973 .....	1,521,500		(4)	1,459,500	68,500	96
1974 .....	1,562,100	46,500	(5)	1,507,300	47,800	96
1975 .....	(6) 1,560,038		(4)	1,527,520	20,220	98

- (1) County population from U.S. Census Bureau Reports.
- (2) Authority population based on U.S. Census Bureau Reports.
- (3) Based on Special Census, U.S. Census Bureau, exclusive of emergency military personnel due to World War II.
- (4) Estimated by the San Diego Chamber of Commerce.
- (5) Estimated by Authority member agencies.
- (6) Population by Special Census.

Table 3  
POPULATION - AUTHORITY MEMBER AGENCIES AND COUNTY  
(Includes Resident Military Personnel)

Member Agencies	Area 6/30/75 Acres	Population - U. S. Census			Decade Increase 1960-70 Percent	1975 Estimate (2)	Average Annual Increase 1970-75		Density of Population 1975 Per Sq. Mile
		1960	1970	1975			Percent	Per Acres	
		(1)	(1)	(2)			Percent	Per Acres	
Bueno Colorado M. W. D.	48,783	31,560	38,000	24	57,200	9	1.17	750	
In City of San Marcos	(8,960)	---	(3,800)	--	(10,000)	3	1.12	714	
In City of Vista	(7,600)	---	(24,600)	--	(28,100)	3	3.70	2,366	
Carlsbad M. W. D.	20,213	18,600	35,500	55	20,950	7	1.04	663	
In City of Carlsbad	(18,826)	(9,400)	(14,800)	58	(19,300)	6	1.03	656	
Del Mar, City of	1,082	---	3,900	--	5,000	6	4.62	2,957	
De Luz Helgins M. W. D.	11,830	---	150	--	170	3	0.01	9	
Escondido, City of	12,367	18,500	36,000	95	49,200	7	3.98	2,546	
Fallbrook Public Utility District	15,769	10,000	12,000	20	14,500	4	0.92	588	
Helix Water District	31,495	122,100	183,000	33	182,600	2	5.80	3,711	
In City of El Cajon	(7,928)	(37,300)	(50,800)	36	(60,050)	4	7.57	4,848	
In City of La Mesa	(5,025)	(29,900)	(38,800)	20	(42,250)	2	8.41	5,381	
National City, City of	5,419	32,300	38,000	21	41,500	1	7.66	4,901	
Oceanside, City of	25,367	34,700	40,700	45	55,300	7	2.18	1,395	
Olivenhain M. W. D.	27,367	200	2,000	900	11,300	93	0.41	264	
Otay M. W. D.	63,895	5,400	18,400	239	35,000	16	0.55	351	
Poway M. W. D.	22,889	4,800	14,000	192	29,400	22	1.28	822	
Rainbow M. W. D.	47,089	2,800	4,200	30	5,400	6	0.11	73	
Ramona M. W. D.	47,578	5,600	6,800	21	8,400	5	0.18	113	
Rincon del Diablo M. W. D.	17,275	34,000	18,000	35	19,550	1	1.13	724	
Rio San Diego M. W. D.	54,213	35,500	46,000	40	73,600	12	1.36	869	
San Diego, City of	202,704	557,200	675,800	21	772,600	3	3.81	2,439	
San Diego Irrigation District	5,637	15,000	21,800	45	28,000	6	4.97	3,179	
Santa Fe Irrigation District	10,200	7,700	8,600	12	12,100	8	1.19	759	
South Bay Irrigation District	15,571	64,300	80,000	24	93,600	3	6.01	3,847	
In City of Chula Vista	(12,607)	(42,400)	(64,500)	52	(75,150)	3	5.96	3,815	
Valley Center M. W. D.	62,122	3,800	7,000	94	10,900	11	0.18	112	
Yuma M. W. D.	12,813	---	1,250	--	1,250	0	0.10	62	
Total Authority	761,678	955,800	1,265,000	31	1,527,520	4	2.01	1,283	
San Diego County	2,725,100	1,933,010	1,310,800	27	1,560,038	4	0.57	366	

(1) Population in agencies other than cities was furnished by agencies.

(2) Estimated by agencies.

Table 4

ASSESSED VALUATIONS - AUTHORITY MEMBER AGENCIES AND COUNTY

Member Agencies	Area 6/30/75 Acres	Assessed Valuation - Secured and Unsecured			Percent Increase	Total	Per Acres	
		1973-74		1974-75				
		Total	Total	Total				Total
Bueno Colorado M. W. D.	48,783	\$ 162,562,435	\$ 192,739,329	18.6	\$ 209,772,005	\$ 4,300		
Carlsbad M. W. D.	20,213	104,679,216	127,823,503	22.1	156,423,569	7,739		
Del Mar, City of	1,082	24,038,026	25,987,798	8.1	27,037,807	24,989		
De Luz Helgins M. W. D.	11,830	2,370,122	2,437,724	2.9	3,087,525	261		
Escondido, City of	12,367	106,477,819	133,080,915	25.0	138,754,394	11,220		
Fallbrook Public Utility District	15,769	39,104,143	42,216,221	8.0	48,769,606	3,093		
Helix Water District	31,495	427,281,665	493,668,194	15.5	584,891,883	18,571		
National City, City of	5,419	75,050,212	79,478,453	5.9	101,125,672	18,661		
Oceanside, City of	25,367	122,142,122	144,237,539	18.1	157,547,187	6,211		
Olivenhain M. W. D.	27,367	36,421,721	49,595,211	36.2	61,805,628	2,258		
Otay M. W. D.	63,895	78,825,196	101,964,882	29.4	118,397,426	1,853		
Poway M. W. D.	22,889	55,538,921	64,275,233	15.7	97,712,466	4,269		
Rainbow M. W. D.	47,089	44,920,809	50,936,477	13.4	55,027,042	1,169		
Ramona M. W. D.	47,578	28,556,987	35,059,309	22.8	42,203,631	887		
Rincon del Diablo M. W. D.	17,275	52,449,186	74,694,648	42.4	81,266,843	4,704		
Rio San Diego M. W. D.	54,213	122,763,223	138,427,557	12.8	151,404,212	2,793		
San Diego, City of	202,704	2,213,996,401	2,513,599,549	13.5	2,799,911,586	13,813		
San Diego Irrigation District	5,637	60,897,922	75,473,190	23.9	82,783,879	14,686		
Santa Fe Irrigation District	10,200	63,205,906	85,661,585	35.5	94,117,314	9,227		
South Bay Irrigation District	15,571	245,705,256	293,514,905	19.5	334,324,863	21,471		
Valley Center M. W. D.	62,122	37,923,386	41,252,639	8.8	59,631,805	960		
Yuma M. W. D.	12,813	9,469,808	9,636,421	1.8	9,956,961	777		
Total Authority	761,678	\$4,114,380,482	\$4,775,761,282	16.1	\$5,415,953,304	\$ 7,111		
San Diego County	1,250,000	\$4,362,535,878	\$5,031,617,712	15.3	\$5,690,643,225	\$ 4,553		

(1) Excluding 1,475,100 acres of tax-exempt lands in San Diego County.

SAN DIEGO COUNTY WATER AUTHORITY

Table 5  
SALES OF COLORADO RIVER WATER-FISCAL YEAR 1974-75  
(All Figures in Acre feet)

Member Agencies	July	August	Sept.	Oct.	Nov.	Dec.	Total 6 Months
Buena Colorado M.W.D.							
San Marcos C.W.D.	591.6	662.9	551.8	466.4	241.8	260.3	2,774.8
Vista I. D.	1,739.6	1,617.2	969.8	1,062.1	593.7	609.6	6,592.0
Cadiz M.W.D.	1,222.8	1,373.4	1,277.6	1,216.8	758.0	546.9	6,395.5
Del Mar, City of	148.3	104.2	97.0	74.7	60.1	40.8	525.1
De Luz Heights M.W.D.	20.4	20.0	23.8	16.9	14.5	6.8	102.4
Escondido, City of	1,819.8	1,257.8	1,167.0	999.0	425.3	943.4	6,612.3
Fallbrook P.U.D.	1,748.8	1,697.8	1,614.9	1,238.3	808.5	601.6	7,709.9
Helix I.D.	3,422.1	3,404.1	3,396.9	3,579.2	2,462.2	2,440.3	18,654.8
National City & South Bay I.D.	2,127.2	2,116.9	1,746.1	1,436.2	771.0	1,249.6	9,437.0
Oceanside, City of	1,893.4	1,881.2	1,609.0	1,327.6	1,068.7	910.0	8,689.9
Overson M.W.D.	406.3	355.0	352.6	256.0	143.7	128.2	1,623.8
Otay M.W.D.	1,466.7	1,606.5	1,595.0	1,217.1	691.1	539.8	7,116.4
Procy M.W.D.	948.9	987.5	922.7	979.0	514.2	502.7	4,855.0
Rainbow M.W.D.	3,042.9	3,083.7	2,935.0	3,304.6	1,201.0	1,250.6	13,817.8
Rancho M.W.D.	576.6	581.0	667.8	327.6	384.6	199.1	2,736.7
Rincon del Diablo M.W.D.	495.5	474.8	444.9	328.4	214.6	169.2	2,127.4
Rio San Diego M.W.D.	1,411.9	1,382.4	1,234.6	974.0	633.3	593.7	6,229.9
San Diego, City of	17,613.0	15,264.4	15,769.1	18,087.8	12,228.3	11,831.3	90,793.9
San Diegoan I.D.	729.3	647.9	584.8	505.5	466.3	310.2	3,244.2
Santa Fe I.D.	1,113.9	970.7	874.5	664.7	310.9	349.8	4,284.5
Valley Center M.W.D.	3,761.6	3,425.2	2,947.9	2,329.3	1,057.8	929.1	14,450.9
Yuma M.W.D.	510.2	526.8	498.2	397.4	67.0	70.8	2,070.4
Total Sales to Agencies	46,811.0	43,441.4	41,261.0	39,728.6	25,118.8	24,483.8	220,844.6
Total Sales to Others	720.0	791.0	706.6	750.9	756.3	748.8	4,473.6
Total Sales to Agencies and Others	47,531.0	44,232.4	41,967.6	40,479.5	25,875.1	25,232.6	225,318.2
Total to Authority Storage	0	+ 520.2	0	+1,590.0	+2,611.0	+3,424.5	+8,145.7
Total from Authority Storage	-5,140.0	-4,636.9	-4,084.8	-3,602.0	-50.0	-50.0	-17,563.7
Total Flow in Authority System	42,391.0	40,115.7	37,882.8	38,467.5	26,436.1	28,607.1	215,900.2
Total Evaporation Losses (Authority Storage in S.V. & Lower Otay Reservoirs)	173.2	135.2	88.2	34.6	23.3	25.6	480.1
Rate of Flow (c.f.s.)							
To Agencies and Others	773.0	719.4	705.3	658.3	436.8	410.4	617.4
To Authority Storage	0	+ 8.4	0	+ 25.9	+ 43.9	+ 55.7	+ 22.3
From Authority Storage	-83.6	-75.4	-68.7	-58.6	-0.8	-0.8	-48.1
Flow in Authority System	689.4 *	652.4	636.6	625.6	477.9	465.3	591.6

\*To Authority's Contractor for Construction and to Otay for delivery to Tijuana, Mexico.

TABLES

Table 5  
(Continued)

Jan.	Feb.	March	April	May	June	Total 6 Months	Yearly Total	Yearly Average cfs
255.9	246.2	209.1	156.0	414.6	1,247.2	2,579.0	5,303.8	7.3
725.8	335.7	483.6	424.3	1,133.9	525.3	3,604.6	10,196.6	14.1
556.9	412.5	446.2	517.3	902.3	767.8	3,603.2	9,998.7	13.8
49.1	39.0	45.6	45.0	51.0	138.7	368.4	893.5	1.2
8.7	4.3	12.7	3.9	21.9	24.1	75.6	178.0	0.2
1,432.8	764.1	709.4	631.7	302.2	475.4	4,315.6	10,927.9	15.1
688.2	345.1	341.5	263.5	1,012.0	1,141.7	3,792.0	11,501.9	15.9
2,588.0	2,053.2	2,250.1	872.2	2,302.5	3,598.8	13,664.8	32,319.6	44.6
1,228.8	1,107.4	1,157.6	1,269.2	1,830.8	2,545.6	8,939.4	18,376.4	25.4
1,009.0	666.3	755.1	780.2	1,347.2	1,539.8	6,097.6	14,787.5	20.4
109.3	100.3	105.7	148.6	289.9	319.4	1,073.2	2,697.0	3.7
423.4	530.0	417.8	468.1	856.3	1,158.4	3,854.0	10,970.4	15.2
440.9	302.7	380.4	357.5	705.0	817.9	3,004.4	7,859.4	10.9
1,197.7	566.5	569.9	342.0	2,017.4	2,185.4	6,878.9	20,696.7	28.6
173.0	154.4	120.3	131.3	311.6	527.2	1,417.8	4,154.5	5.7
187.1	88.4	120.0	95.8	342.8	365.9	1,200.0	3,327.4	4.6
662.1	516.3	597.1	574.9	1,003.0	1,307.3	4,555.5	10,785.4	14.9
11,821.7	9,888.3	10,959.2	9,766.9	11,329.4	10,579.6	64,345.1	155,139.0	214.3
340.5	282.7	279.5	308.9	512.4	469.7	2,193.7	5,437.9	7.5
383.9	240.9	268.5	263.1	652.3	704.6	2,513.3	6,797.8	9.4
1,165.6	703.5	669.5	512.9	2,523.8	3,014.7	8,588.0	23,038.9	31.8
94.9	9.2	17.7	3.0	142.0	307.9	574.7	2,645.1	3.7
25,543.3	19,356.8	20,914.5	17,936.5	29,980.3	33,457.4	147,188.8	368,033.4	508.3
653.0	591.2	621.1	544.0	641.7	728.2	3,779.2	8,252.8	11.4
26,196.3	19,948.0	21,535.6	18,480.5	30,622.0	34,185.6	150,968.0	376,286.2	519.7
-2,217.0	+3,675.5	+5,478.9	+3,832.3	+4,193.9	+2,565.9	+21,963.5	+30,109.2	+41.6
-50.0	-50.0	-50.0	-50.0	-62.0	-85.0	-347.0	-17,910.7	-24.7
28,363.3	23,573.5	26,964.5	22,262.8	34,753.9	36,666.5	172,584.5	388,484.7	536.6
37.5	38.5	47.0	60.8	140.3	182.2	506.3	986.4	1.4
436.0	359.2	350.2	310.6	498.0	574.5	420.5	519.7	
+36.1	+66.2	+89.1	+64.4	+68.2	+43.1	+61.2	+41.6	
-0.8	-0.9	-0.8	-0.8	-1.0	-1.4	-1.0	-24.7	
461.3	424.5	438.5	374.2	565.2	614.2	480.7	536.6	



Table 8  
WATER PRODUCTION OF AUTHORITY AGENCIES - FISCAL YEAR 1974-75

Member Agencies	TOTAL WATER PRODUCTION				SOURCE OF WATER			
	as m. g. d.	as c. f. s.	as ac. ft./yr.	as ac. ft./yr.	Local Supply Amount	Percent	Authority Supply Amount	Percent
					ac. ft.		ac. ft.	
Bueno Colorado M. W. D.	15.60	24.14	17,476.6	1,990.0	11.4	15,486.6	88.6	
Carlsbad M. W. D.	8.95	13.84	10,022.3	0	0	10,022.3	100.0	
Del Mar, City of	0.80	1.23	893.5	0	0	893.5	100.0	
De Luz Heights M. W. D.	0.16	0.25	178.0	0	0	178.0	100.0	
Escondido, City of	16.23	25.11	18,180.6	5,760.1	31.7	12,420.5	68.3	
Fallbrook Public Utility District	10.29	* 15.92	11,524.5	0	0	11,524.5	100.0	
Helix Water District	30.18	46.70	33,806.7	2,736.2	8.1	31,070.5	91.9	
National City and South Bay I.D.	17.91	27.72	20,065.0	1,897.0	9.5	18,168.0	90.5	
Oceanside, City of	13.23	20.47	14,816.8	2.1	0	14,814.7	100.0	
Oliveshain M. W. D.	2.41	3.72	2,697.0	0	0	2,697.0	100.0	
Otay M. W. D.	9.79	15.15	10,970.4	0	0	10,970.4	100.0	
Poway M. W. D.	6.55	10.13	7,335.1	0	0	7,335.1	100.0	
Rainbow M. W. D.	18.46	28.56	20,677.7	0	0	20,677.7	100.0	
Ramona M. W. D.	3.65	5.64	4,086.3	57.3	1.4	4,029.0	98.6	
Rincon del Diablo M. W. D.	2.97	4.60	3,327.6	0	0	3,327.6	100.0	
Rio San Diego M. W. D.	9.63	14.90	10,785.4	0	0	10,785.4	100.0	
San Diego, City of:								
Inside City	137.23	212.34	153,723.8	6,680.4	4.3	147,043.4	95.7	
Outside City (Not in Authority)	5.63	8.71	6,304.2	6,304.2	100.0	0	0	
San Diego Irrigation District	5.19	8.03	5,810.5	373.2	6.4	5,437.3	93.6	
Santa Fe Irrigation District	6.40	9.90	7,170.8	366.1	5.1	6,804.7	94.9	
Valley Center M. W. D.	18.17	28.11	20,353.2	30.0	0.1	20,323.2	99.9	
Yuima M. W. D.	3.79	5.87	4,251.0	1,605.9	37.8	2,645.1	62.2	
Total	343.22	531.04	384,457.0	27,802.5	7.2	356,654.5	92.8	

Note: This table is a compilation of data furnished by member agencies.  
Figures include losses in transmission and distribution systems but not in conservation reservoirs.

Table 9  
UNIT WATER PRODUCTION - PER ACRE AND PER CAPITA 1974-75

Member Agencies	Gross Area (2)	Total Production of Water	Estimated Area Served by Water System	Water Production Per Area Served	Estimated Population	Water Production Per Capita
Bueno Colorado M. W. D.	48,783	17,476.6	36,050	0.48	57,200	0.31
Carlsbad M. W. D.	20,213	10,022.3	16,950	0.59	20,950	0.48
Del Mar, City of	1,082	893.5	1,080	0.83	5,000	0.18
De Luz Heights M. W. D.	11,830	178.0	500	0.36	170	1.05
Escondido, City of	12,367	18,180.6	9,620	1.89	49,200	0.37
Fallbrook Public Utility District	15,769	11,524.5	8,770	1.31	14,500	0.79
Helix Water District	31,495	33,806.7	29,290	1.15	182,600	0.19
National City, City of	5,419	5,182.0	3,900	1.33	41,500	0.12
Oceanside, City of	25,367	14,816.8	13,630	1.09	55,300	0.27
Oliveshain M. W. D.	27,367	2,697.0	3,100	0.87	11,300	0.24
Otay M. W. D.	63,895	10,970.4	28,270	0.39	35,000	0.31
Poway M. W. D.	22,899	7,335.1	9,900	0.74	29,400	0.25
Rainbow M. W. D.	47,089	20,677.7	(3) 10,300	2.01	5,400	3.83
Ramona M. W. D.	47,578	4,086.3	8,550	0.48	8,400	0.49
Rincon del Diablo M. W. D.	17,275	3,327.6	13,560	0.25	19,550	0.17
Rio San Diego M. W. D.	54,213	10,785.4	27,230	0.40	73,600	0.15
San Diego, City of	202,704	(1) 153,723.8	204,470	0.75	772,600	0.20
San Diego Irrigation District	5,637	5,810.5	5,000	1.16	28,000	0.21
Santa Fe Irrigation District	10,200	7,170.8	9,200	0.78	12,100	0.59
South Bay Irrigation District	15,571	14,883.0	9,800	1.52	93,600	0.16
Valley Center M. W. D.	62,122	20,353.2	17,500	1.16	10,900	1.87
Yuima M. W. D.	12,813	4,251.0	4,000	1.06	1,250	3.40
Total and Average	761,678	384,457.0	470,670	0.82	1,527,520	0.25

(1) Does not include production by City of San Diego for areas outside City (not in Authority).

(2) Does not include overlapping area as shown in Table 1.

(3) Corrected service area per April 1975 Albert A. Webb & Associate report.

Table 10  
AGRICULTURAL USE OF WATER - FISCAL YEAR 1974-75

Member Agencies	Total Water Production ac. ft.	Water Used for Agricultural Purposes				Percent of Agricultural Water to Total Production	
		From Local Supply		From Authority			
		ac. ft.	Percent	ac. ft.	Percent		
Bueno Colorado M.W.D.	17,476.6	693.8	12.1	5,053.7	87.9	5,747.5	32.9
San Marcos C.W.D.	(4,579.6)	(0)	(0)	(962.3)	(100.0)	(962.3)	(21.0)
Vista Irrigation District	(12,897.0)	(693.8)	(14.5)	(4,091.4)	(85.5)	(4,785.2)	(37.1)
Carlsbad M.W.D.	10,022.3	0	0	3,816.7	100.0	3,816.7	38.1
Del Mar, City of	893.5	(a)	-	(a)	-	(a)	-
De Luz Heights M.W.D.	178.0	0	0	158.1	100.0	158.1	88.8
Escondido, City of	18,180.6	2,385.2	30.5	5,442.5	69.5	7,827.7	43.0
Fallbrook Public Utility District	11,524.5	0	0	8,514.4	100.0	8,514.4	73.9
Helix Water District	33,806.7	57.9	4.8	1,159.2	95.2	1,217.1	3.6
National City & South Bay I.D.	20,065.0	37.8	9.1	378.6	90.9	416.4	2.1
Oceanside, City of	14,816.8	0.5	-	3,092.0	100.0	3,092.5	20.9
Oliventain M.W.D.	2,697.0	0	0	1,120.1	100.0	1,120.1	41.5
Okay M.W.D.	10,970.4	0	0	4,969.9	100.0	4,969.9	45.3
Poway M.W.D.	7,335.1	0	0	1,666.3	100.0	1,666.3	22.7
Rainbow M.W.D.	20,677.7	0	0	18,919.9	100.0	18,919.9	91.5
Ramona M.W.D.	4,086.3	40.5	1.6	2,465.6	98.4	2,506.1	61.3
Rincon del Diabolo M.W.D.	3,327.6	0	0	1,245.4	100.0	1,245.4	37.4
Rio San Diego M.W.D.	10,785.4	0	0	164.6	100.0	164.6	1.5
San Diego, City of	153,723.8	352.7	8.1	4,025.1	91.9	4,377.8	2.8
San Diegoito Irrigation District	5,810.5	140.5	5.6	2,351.4	94.4	2,491.9	42.9
Santa Fe Irrigation District	7,170.8	57.9	4.4	1,265.2	95.6	1,323.1	18.5
Valley Center M.W.D.	20,353.2	19.7	0.1	20,220.6	99.9	20,240.3	99.4
Yuima M.W.D.	4,251.0	1,562.8	37.6	2,589.7	62.4	4,152.5	97.7
Total	378,152.8	5,349.3	5.7	88,619.0	94.3	93,968.3	24.8

(a) Included in City of San Diego.

Table 11  
AUTHORITY STORAGE IN SAN VICENTE RESERVOIR  
(Fiscal Year 1974-75)

Member Agencies	Total Quantity in Storage 7/1/74 ac. ft.	Placed Into Storage During Fiscal Year ac. ft.	Withdrawn During Fiscal Year		Total Quantity in Storage 6/30/75 ac. ft.
			By Delivery	By Evaporation	
			ac. ft.	ac. ft.	
Bueno Colorado M.W.D.	592.4	768.8	485.2	27.7	848.3
San Marcos C.W.D.	888.5	1,153.3	727.9	41.5	1,272.4
Vista Irrigation District	1,480.9	2,460.4	1,213.1	77.3	2,650.9
Carlsbad M.W.D.	0	0	0	0	0
Del Mar, City of	0	0	0	0	0
De Luz Heights M.W.D.	0	0	0	0	0
Escondido, City of	0	0	0	0	0
Fallbrook Public Utility District	2,961.8	4,059.8	2,426.2	141.9	4,453.5
Helix Water District	0	0	0	0	0
National City and South Bay I.D.	0	0	0	0	0
Oceanside, City of	691.1	968.8	566.1	33.5	1,060.3
Oliventain M.W.D.	987.3	922.5	808.7	40.8	1,060.3
Otay M.W.D.	1,974.6	3,270.4	1,957.3	106.6	3,181.1
Poway M.W.D.	0	0	0	0	0
Rainbow M.W.D.	4,442.8	6,089.3	3,639.3	212.6	6,680.2
Ramona M.W.D.	395.0	368.9	323.6	16.2	424.1
Rincon del Diabolo M.W.D.	987.4	1,353.2	808.8	47.3	1,484.5
Rio San Diego M.W.D.	987.3	1,460.8	808.7	48.9	1,590.5
San Diego, City of	0	0	0	0	0
San Diegoito Irrigation District	0	0	0	0	0
Santa Fe Irrigation District	395.0	584.3	323.6	19.5	636.2
Valley Center M.W.D.	2,961.9	4,059.7	2,426.2	141.9	4,453.5
Yuima M.W.D.	592.4	768.8	485.3	27.6	848.3
Total	20,338.4	28,289.0	17,000.0	983.3	30,644.1

Table 12  
CHEMICAL CHARACTER OF NATURAL COLORADO RIVER WATER  
AT WEST PORTAL OF SAN JACINTO TUNNEL

Year Ending June 30, 1975

Samples Taken at Entrance to San Diego Aqueduct by M. W. D.  
and Analyzed by District Laboratory

Month	Total Hardness as P. P. M. CaCO <sub>3</sub>	Non Carbonate Hardness as P. P. M. CaCO <sub>3</sub>	*Alkalinity as P. P. M. CaCO <sub>3</sub>		Magnesium as P. P. M. of Mg.	Hydrogen Ion Concentration	Temperature When Sampled °F
			Total	Phenolphthalein			
July	325	214	111	1	31.0	8.4	78
August	329	209	120	1	29.0	8.4	79
September	335	216	119	1	30.5	8.3	78
October	333	211	121	1	30.5	8.3	76
November	336	214	122	0	30.0	8.2	65
December	336	214	122	0	29.5	8.2	57
January	336	214	122	2	29.5	8.4	51
February	337	214	123	1	31.0	8.3	51
March	338	215	123	1	30.5	8.3	58
April	340	217	123	1	30.5	8.3	58
May	342	214	128	1	31.0	8.4	62
June	333	212	121	1	30.5	8.4	73
Average	335	214	121	1	30.3	8.3	66
Maximum	342	217	128	2	31.0	8.4	79
Minimum	325	209	111	0	29.0	8.2	51

Table 13  
ANALYSIS OF COLORADO RIVER AQUEDUCT WATER  
TAKEN AT WEST PORTAL OF SAN JACINTO TUNNEL  
For Year Ending June 30, 1975

Constituent	Symbol	ANALYSIS	
		Average	Minimum
Silica	SiO <sub>2</sub>	7.2 ppm	5.7 ppm
Iron	Fe	0.03 ppm	0.02 ppm
Calcium	Ca	84 ppm	79 ppm
Magnesium	Mg	30.3 ppm	29.5 ppm
Sodium	Na	105 ppm	102 ppm
Potassium	K	5 ppm	4 ppm
Carbonate	CO <sub>3</sub>	1 ppm	0 ppm
Bicarbonate	HCO <sub>3</sub>	146 ppm	133 ppm
Sulfate	SO <sub>4</sub>	307 ppm	294 ppm
Chloride	Cl	90 ppm	89 ppm
Nitrate	NO <sub>3</sub>	0.2 ppm	0.0 ppm
Fluoride	F	0.4 ppm	0.4 ppm
Total Dissolved Solids		704 ppm	684 ppm
Hardness as CaCO <sub>3</sub>			
Total		335 ppm	342 ppm
Carbonate		121 ppm	128 ppm
Noncarbonate		214 ppm	217 ppm
Alkalinity - Phenolphthalein		1 ppm	2 ppm
Alkalinity - Total		121 ppm	128 ppm
Free Carbon Dioxide	CO <sub>2</sub>	1 ppm	1 ppm
Hydrogen Ion Concentration	pH	8.3	8.2
Electrical Conductivity	ECx10 <sup>6</sup> at 25°C	1,093	1,050
Temperature	°F	66	51

Table 14  
ALLOCATION OF RIGHT TO PURCHASE AUTHORITY WATER  
As of June 30, 1975

Member Agencies	Amount Paid by Taxes to 6/30/75	Amount Paid for Service Connections to 6/30/75	Total Amount Paid by Each Member Agency to 6/30/75	Amount Remaining to be Paid Under Terms of Annexation	Total Contributions Paid and Contracted for	Percentage of Auth. Supply	Allocation Equivalent Flow c. f. s.
Buena Colorado M.W.D.	1,564,050	56,654	1,620,704	0	1,620,704	3.39	28.00
Carlsbad M.W.D.	1,080,819	7,931	1,088,750	0	1,088,750	2.27	18.75
Del Mar, City of	312,355	-	312,355	0	312,355	0.65	5.37
De Luz Heights M.W.D.	19,774	-	19,774	4,071	23,845	0.04	0.33
Escondido, City of	1,038,678	9,253	1,047,931	0	1,047,931	2.19	18.09
Fallbrook P.U.D.	421,037	67,773	488,810	0	488,810	1.02	8.43
Helix Water District	5,148,454	28,905	5,177,359	0	5,177,359	10.82	89.37
National City, City of	1,018,209	-	1,018,209	0	1,018,209	2.13	17.59
Oceanside, City of	1,303,508	59,109	1,362,617	0	1,362,617	2.85	23.54
Olivethian M.W.D.	253,500	22,660	276,160	1,651	277,811	0.58	4.79
Otay M.W.D.	701,618	96,019	797,637	0	797,637	1.67	13.79
Poway M.W.D.	415,246	27,307	442,553	0	442,553	0.92	7.60
Rainbow M.W.D.	414,079	147,461	561,540	2,304	563,844	1.17	9.66
Ranoma M.W.D.	281,829	3,378	285,207	15,405	300,612	0.60	4.96
Rancon del Diablo M.W.D.	674,211	14,527	688,738	0	688,738	1.44	11.89
Rio San Diego M.W.D.	1,108,088	45,244	1,153,332	1,515	1,154,847	2.41	19.91
San Diego, City of	26,537,937	84,908	26,622,845	0	26,622,845	55.66	459.75
San Diegoito I.D.	647,892	5,758	653,650	0	653,650	1.37	11.32
Santa Fe I.D.	637,592	8,129	645,721	0	645,721	1.35	11.15
South Bay I.D.	2,955,053	594	2,955,647	0	2,955,647	6.18	51.05
Valley Center M.W.D.	357,152	128,973	486,125	1,011	487,136	1.02	8.43
Yuma M.W.D.	115,506	11,900	127,406	3,040	130,446	0.27	2.23
Total Authority	\$947,806,588	826,490	47,833,088	29,002	47,862,090	100.00	**826,000

\* Figures do not total due to omission of cents.  
\*\* Maximum capacity as of June 30, 1975.

Table 15  
SAN DIEGO COUNTY WATER AUTHORITY  
Statement of Tax Assessments and Collections  
Fiscal Years 1945-46 to 1974-75

Member Agencies	Tax Assessments to Date	Adj. to Tax Assessments	Tax Collections	Interest & Penalties	Tax on Options	Receipts in Lieu of Taxes	Misc. Tax Sales	Less Refunds	Net Total Collections	Uncollected 6/30/75
Fallbrook P.U.D.	\$ 417,538	569	415,860	1,776	-	3,420	42	62	421,037	2,247
Helix W.D.	5,143,373	11,001	5,130,550	12,923	89	4,930	693	733	5,148,454	23,824
City of National City	1,006,142	7,243	1,009,771	2,131	8	6,828	85	615	1,018,209	3,613
City of Oceanside	1,305,645	3,940	1,298,520	2,868	5	2,601	95	582	1,303,508	11,065
City of San Diego	27,003,570	17,627	15,281,508	28,904	42	11,882,743	2,424	44,799	27,151,223	10,879
Ranoma M.W.D.	279,401	955	275,092	1,292	-	5,400	58	14	281,829	5,264
Santa Fe I.D.	635,851	1,456	631,419	2,115	821	2,892	1,093	748	637,592	5,888
San Diegoito I.D.	644,059	736	641,134	1,522	3	5,426	127	321	647,892	3,661
City of Escondido	1,039,744	5,505	1,036,132	2,624	-	28	28	136	1,038,678	9,117
South Bay I.D.	2,951,059	11,698	2,948,036	4,604	-	15,296	142	13,026	2,955,053	14,722
Rainbow M.W.D.	400,275	389	388,335	2,195	-	23,679	-	31	414,079	12,429
Poway M.W.D.	422,453	472	412,241	3,015	-	15	8	34	415,246	10,684
Buena Colorado M.W.D.	1,559,888	3,920	1,548,431	4,978	1	16,802	121	285	1,564,050	15,377
Rancon del Diablo M.W.D.	619,364	1,716	613,608	1,844	-	58,800	1	43	674,211	7,473
Carlsbad M.W.D.	1,060,190	1,048	1,045,410	2,493	-	33,275	10	371	1,080,819	15,827
Valley Center M.W.D.	349,091	8,568	353,872	2,258	-	1,011	26	15	357,152	3,787
Rio San Diego M.W.D.	1,116,130	2,613	1,102,038	5,315	-	878	131	274	1,108,088	16,705
Otay M.W.D.	708,628	1,164	699,630	2,117	-	-	45	176	701,618	10,162
Olivethian M.W.D.	259,709	(170)	250,703	1,597	-	1,250	-	50	253,500	8,834
City of Del Mar	310,552	4,038	310,881	987	-	530	1	44	312,355	3,709
Yuma M.W.D.	114,828	379	113,779	273	-	1,500	-	47	115,506	1,427
De Luz M.W.D.	19,596	7	18,211	38	-	1,000	-	-	19,774	887
Total Member Agencies	\$47,369,098	84,882	35,525,977	87,897	972	12,062,312	5,141	62,416	47,619,884	197,592
Withdrawn Areas	4,169	29	4,199	11	-	186	2	5	4,294	-
Grand Total*	\$47,373,267	84,912	35,530,176	87,908	972	12,062,499	5,143	62,422	47,624,178	197,592

\* Figures do not total due to omission of cents.

Table 16  
ASSESSED VALUATIONS AND TAX RATES  
Fiscal Years 1945-46 to 1974-75

Fiscal Year	Secured Property	Public Utilities	Unsecured Property	Total	Tax Rate per \$100 Secured	Tax Rate per \$100 Unsecured
1945-46	\$ 212,062,975	26,253,700	29,969,130	270,296,805	0.04	-
1946-47	208,715,150*	29,433,450	30,665,910	268,814,510	0.04	0.04
1947-48	233,379,990	32,740,680	40,977,850	307,298,520**	0.14	0.04
1948-49	254,227,570	37,482,020	47,177,300	338,886,890	0.14	0.14
1949-50	290,351,875	42,429,140	45,743,200	378,524,215	0.10	0.14
1950-51	306,104,930	43,385,730	44,717,740	394,418,400	0.10	0.10
1951-52	344,620,030	48,452,940	50,903,033	443,977,003	0.10	0.10
1952-53	382,948,860	53,208,220	63,906,330	500,153,410	0.12	0.10
1953-54	490,709,350	63,092,450	69,147,150	622,948,950	0.10	0.12
1954-55	546,272,880	69,243,550	79,629,790	695,146,220	0.10	0.10
1955-56	627,062,960	87,483,390	79,936,450	794,484,800	0.09	0.10
1956-57	650,824,400	101,224,260	97,950,800	849,995,460	0.09	0.09
1957-58	761,088,330	111,151,890	128,785,440	1,001,025,660	0.09	0.09
1958-59	865,283,080	128,479,290	128,124,720	1,121,887,090	0.10	0.09
1959-60	979,491,050	143,317,290	134,846,730	1,259,655,070	0.11	0.10
1960-61	1,116,723,830	165,666,720	159,954,740	1,442,345,290	0.11	0.11
1961-62	1,220,610,650	191,276,650	155,149,890	1,567,037,190	0.11	0.11
1962-63	1,272,506,330	201,246,370	154,989,440	1,628,741,140	0.11	0.11
1963-64	1,340,197,170	209,793,780	159,714,930	1,709,705,880	0.11	0.11
1964-65	1,423,978,590	213,352,470	151,686,520	1,788,414,580	0.11	0.11
1965-66	1,511,967,750	212,605,040	155,417,220	1,879,990,010	0.11	0.11
1966-67	1,567,290,460	212,223,550	147,740,730	1,827,254,740	0.11	0.11
1967-68	1,735,209,870	209,136,160	178,641,120	2,122,987,150	0.10	0.11
1968-69	1,876,936,060	208,018,700	197,139,690	2,282,094,560	0.09	0.10
1969-70	2,063,618,562	210,839,100	237,951,409	2,512,409,091	0.09	0.09
1970-71	2,348,151,943	216,378,300	276,932,717	2,841,462,960	0.09	0.09
1971-72	2,755,734,087	213,191,301	306,608,099	3,275,533,487	0.10	0.09
1972-73	3,061,010,163	225,224,650	347,857,938	3,634,092,751	0.11	0.10
1973-74	3,481,734,238	239,346,070	393,300,174	4,114,380,482	0.11	0.11
1974-75	4,075,823,685	249,562,970	450,374,627	4,775,761,282	0.11	0.11

\*City of Coronado secured assessed valuations not included in this or subsequent tax levies by the Authority, having withdrawn from the Authority prior to 1946-47.

\*\*City of Coronado not included in this or subsequent total valuation.

Table 17  
TAX LEVIES AND TAX COLLECTIONS BY FISCAL YEAR  
Fiscal Years 1945-46 to 1974-75

Fiscal Year	Tax Levy	Collection of Current Year's Taxes During Fiscal Year	Percentage of Levy Collected During Fiscal Year	Adjustments to Prior Year's Levies		Collection of Prior Year's Taxes During Fiscal Year		Total Tax Collections	Accumulated Delinquent Taxes	Ratio of Accumulated Delinquent Taxes to Tax Levy
				Year's	Levies	Year's	Fiscal Year			
1945-46	\$ 96,131	94,656	98.47%	-	-	-	-	94,656	1,474	1.53%
1946-47	107,308	105,753	98.09	-	-	1,090	1,090	106,844	2,439	2.26
1947-48	389,391	381,563	97.94	-	-	1,882	1,882	383,445	8,585	2.20
1948-49	474,520	459,594	96.84	-	-	5,916	5,916	465,420	17,655	3.73
1949-50	401,112	392,732	97.91	329	13,342	13,342	406,074	13,032	3.25	
1950-51	397,570	390,274	98.07	373	8,217	8,217	398,492	12,904	3.24	
1951-52	450,405	441,242	97.97	978	7,699	7,699	448,941	15,346	3.40	
1952-53	594,603	585,417	98.46	(1,140)	12,567	12,567	597,985	10,824	1.82	
1953-54	652,335	640,239	98.15	4,213	9,942	9,942	650,181	17,191	2.62	
1954-55	709,678	693,200	97.96	1,295	12,638	12,638	707,838	20,226	2.86	
1955-56	803,375	785,734	97.41	(2,090)	12,140	12,140	800,574	20,726	2.59	
1956-57	874,774	861,461	98.48	576	13,056	13,056	874,517	21,560	2.46	
1957-58	965,006	946,445	98.08	958	12,890	12,890	959,335	28,189	2.92	
1958-59	1,178,885	1,157,265	98.17	-	13,347	13,347	1,170,613	36,462	3.09	
1959-60	1,436,270	1,408,277	98.05	(5,274)	16,647	16,647	1,424,925	42,533	2.97	
1960-61	1,684,733	1,586,169	97.63	(8,720)	21,501	21,501	1,607,671	50,874	3.15	
1961-62	1,763,785	1,718,575	97.44	(2,376)	31,477	31,477	1,750,053	62,330	3.54	
1962-63	1,816,449	1,775,932	97.77	(3,658)	38,134	38,134	1,814,066	61,023	3.37	
1963-64	1,910,019	1,862,973	97.54	(2,668)	36,825	36,825	1,899,799	70,975	3.72	
1964-65	2,000,067	1,948,853	97.44	(6,556)	42,596	42,596	1,991,450	73,093	3.66	
1965-66	2,101,023	2,033,032	96.76	3,503	44,784	44,784	2,077,516	98,714	4.69	
1966-67	2,154,954	2,090,637	97.01	(7,164)	54,333	54,333	2,144,970	101,573	4.73	
1967-68	2,175,276	2,129,996	97.92	(301)	64,473	64,473	2,194,470	82,078	3.77	
1968-69	2,110,913	2,103,601	99.63	-	55,253	55,253	2,158,854	34,136	1.62	
1969-70	2,298,574	2,204,128	95.89	-	24,018	24,018	2,228,146	103,963	4.52	
1970-71	2,450,123	2,408,899	98.32	38,500	104,032	104,032	2,512,932	79,655	3.25	
1971-72	3,084,869	3,058,713	99.15	27,045	32,926	32,926	3,091,639	99,930	3.24	
1972-73	3,790,191	3,743,715	98.77	494	45,314	45,314	3,789,029	101,586	2.68	
1973-74	4,004,024	3,941,152	98.43	4,591	43,846	43,846	3,984,999	125,502	3.13	
1974-75	4,673,400	4,597,610	98.37	-	42,611	42,611	4,640,222	197,392	4.23	

Table 15  
SAN DIEGO COUNTY WATER AUTHORITY  
ANNEXATION CHARGES, ASSESSMENTS AND BALANCES

Area	Date of Annexation	Amount of Annexation Charge	Period of Special Assessments		Special Assessments to 6/30/74	Fiscal Year 1974-75		Remaining Balance of Annexation Charges 6/30/75
			First Year	Last Year		Special Assessments	Tax Rate \$/8100	
Annexation Charges Completed		\$ 926,680			926,680			
Annexation Charges Outstanding:								
De Luz Heights M.W.D.	6-28-67	7,400	1968-69	1977-78	4,480	668	3¢	2,251
No. 1 Annex of 1969	10-20-69	4,200	1970-71	1979-80	2,003	376	22¢	1,820
Olivewood M.W.D.								
No. 1 Annex of 1965	2-11-65	14,000	1966-67	1975-76	12,118	1,110	2¢	771
No. 4 Annex of 1967	11-15-67	3,500	1968-69	1977-78	2,326	292	10¢	880
Rainbow M.W.D.								
No. 3 Annex of 1967	12-11-67	9,100	1968-69	1977-78	5,907	887	7¢	2,304
Ranoma M.W.D.								
No. 4 Annex of 1967	11-30-67	6,100	1968-69	1977-78	4,003	591	5¢	1,504
No. 5 Annex of 1972	5-17-72	18,300	1971-72	1982-83	2,392	2,006	3¢	13,901
Rio San Diego M.W.D.								
No. 4 Annex of 1970	8-03-70	3,100	1971-72	1980-81	1,254	329	4¢	1,515
Valley Center M.W.D.								
No. 2 Annex of 1967	12-04-67	1,650	1968-69	1977-78	1,106	134	28¢	409
No. 3 Annex of 1967	12-04-67	2,750	1968-69	1977-78	1,897	250	3¢	602
Yuma M.W.D.								
No. 1 Annex of 1967	11-27-67	6,000	1968-69	1977-78	3,619	511	5¢	1,868
No. 2 Annex of 1969	11-03-69	2,800	1970-71	1979-80	1,391	235	45¢	1,172
<b>Total</b>		<b>\$1,005,580</b>			<b>969,181</b>	<b>7,396</b>		<b>29,002</b>

Table 19  
ASSESSED VALUATIONS AND TAX RATES OF THE  
METROPOLITAN WATER DISTRICT OF SOUTHERN CALIFORNIA

Fiscal Year	Area (acres)	Assessed Valuation Total (\$)	Tax Rate	
			Per \$100 Secured	Per \$100 Unsecured
1929-30	-	\$ 2,429,826,820	0.04	0.00
1930-31	-	2,431,684,250	.03	.04
1931-32	-	2,382,184,445	.03	.03
1932-33	-	1,936,051,180	.04	.03
1933-34	-	1,654,403,890	.04	.04
1934-35	-	1,587,147,565	.10	.04
1935-36	-	1,783,031,020	.20	.10
1936-37	-	1,789,169,685	.37	.20
1937-38	-	1,827,765,725	.40	.37
1938-39	-	1,896,966,255	.40	.40
1939-40	-	1,910,152,190	.42	.40
1940-41	389,588	1,841,248,450	.49	.42
1941-42	399,875	1,900,599,934	.48	.49
1942-43	400,614	2,001,924,735	.48	.48
1943-44	401,190	2,005,496,430	.48	.48
1944-45	401,536	2,109,192,795	.48	.48
1945-46	402,779	2,159,731,425	.50	.48
1946-47	501,425	2,413,186,570	.48	.50
1947-48	546,573	3,443,212,822 (2)	.35	.48
1948-49	578,368	3,883,081,225	.34	.35
1949-50	585,184	4,181,812,855	.34	.34
1950-51	721,859	4,281,519,725	.31	.34
1951-52	995,139	4,674,664,040	.30	.31
1952-53	1,129,448	5,372,498,515	.28	.30
1953-54	1,368,028	6,015,691,980	.25	.28
1954-55	1,793,651	6,548,392,114	.23	.25
1955-56	1,876,256	8,514,868,335	.21	.23
1956-57	1,932,205	9,674,090,560	.19	.21
1957-58	2,046,189	11,235,996,510	.18	.19
1958-59	2,128,333	12,070,838,070	.18	.18
1959-60	2,171,290	12,714,295,470	.17	.18
1960-61	2,544,960	13,737,971,925	.16	.17
1961-62	2,647,014	14,803,292,587	.15	.16
1962-63	2,797,946	15,699,681,030	.14	.15
1963-64	2,825,306	17,261,412,395	.14	.14
1964-65	2,882,144	17,757,246,740	.14	.14
1965-66	2,899,266	19,143,157,788	.14	.14
1966-67	2,901,421	20,979,150,165	.14	.14
1967-68	3,061,885	22,732,157,590	.14	.14
1968-69	3,067,896	24,016,568,274	.16	.14
1969-70	3,072,058	25,572,510,561	.17	.16
1970-71	3,075,616	27,685,064,302	.17	.17
1971-72	3,093,303	29,023,413,462	.17	.17
1972-73	3,126,803	31,001,529,641	.15	.17
1973-74	3,127,680	32,838,476,378	.14	.15
1974-75	3,129,664	35,941,961,265	.14	.14
1975-76	(2)	39,585,365,754	.13	.14

(1) Includes secured, unsecured, and public utility valuations.

(2) First year in which Authority assessed valuation was included in District's assessed valuation.

(3) Data for 1975-76 were available before completion of report and are included for convenience of reader.

Table 20  
METROPOLITAN WATER DISTRICT ANNEXATION CHARGES  
AND BALANCES ON AUTHORITY AREAS

Member Agencies	Date of Annexation	Amount of Annexation Charge	Remaining Balance 6/30/75
Annexation Charges Completed		\$ 148,859	\$ ---
Annexation Charges Outstanding			
Chula Vista, City of			
Fallbrook Public Utility District			
Lakeside Irrigation District			
Helix Water District	12-17-60	13,045,000	840,970
National City, City of			
Oceanside, City of			
San Diego, City of			
Barro Colorado M. W. D.	6-11-54	1,972,230	341,756
Carlsbad M. W. D.	6-16-54	548,590	178,500
Del Mar, City of	11-23-62	411,250	366,681
De Luz M. W. D.	6-26-67	2,982,000	2,533,499
No. 1 Annexation of 1968	10-19-69	212,000	273,500
Escondido, City of	10- 9-58	286,000	74,166
Fallbrook Public Utility District			
No. 1 Annexation of 1956	8- 1-56	34,000	5,277
No. 2 Annexation of 1958	11-24-58	50,100	23,005
Fallbrook Community Air Park	12-22-60	50,900	71,091
Helix Water District			
Crest P. U. D. Annexation	12-13-48	10,500	1,313
El Cajon Dry Island Annexation	12-29-54	327,650	106,620
Helix-Watson Ranch Annexation	7-29-59	8,730	4,099
Helix Sunny Slope Hts. Annexation	9-17-59	38,250	19,039
Olivenhain M. W. D.	1-25-68	82,800	40,923
No. 1 Annexation of 1965	2-11-63	512,520	358,653
No. 4 Annexation of 1967	11-12-67	74,900	84,881
Olney M. W. D.	10-26-56	273,000	97,920
No. 3 Annexation of 1960	10-20-60	95,100	49,900
Poway M. W. D.	4-21-54	91,800	27,517
No. 1 Annexation of 1959	9-21-59	27,150	13,558
Rainbow M. W. D.	4-10-54	167,700	52,698
No. 1 Annexation of 1959	5-12-59	24,300	11,897
No. 2 Annexation of 1967	12- 8-67	1,728,000	2,213,780
No. 5 Annexation of 1973	11-22-73	13,200	13,247
Ranoma M. W. D.	8-27-57	339,000	146,895
No. 1 Annexation of 1959	5-29-59	42,330	21,114
No. 2 Annexation of 1961	9-22-61	15,100	8,655
No. 3 Annexation of 1963	9-29-63	18,500	6,836
No. 4 Annexation of 1967	11-27-67	486,600	587,250
No. 3 Annexation of 1972	5-17-72	720,000	1,177,284
Rincon del Diablo M. W. D.	6-14-54	737,300	240,710
No. 4 Annexation of 1972	11- 2-72	19,700	20,504
Rio San Diego M. W. D.			
(not including Lakeside I.D.)	6- 7-56	373,000	146,219
No. 2 Annexation of 1959	11- 6-59	109,110	54,228
No. 3 Annexation of 1960	10-17-60	399,800	153,574
No. 4 Annexation of 1970	8- 3-70	104,000	165,272
San Diego Irrigation District			
No. 1 Annexation of 1959	9-15-59	71,820	35,297
No. 2 Annexation of 1977	12- 8-72	197,000	113,558
Santa Fe Irrigation District			
South Bay Irrigation District			
(not including City of Chula Vista)	11- 3-52	448,378	109,389
Valley Center M. W. D.	9- 9-55	295,680	75,260
No. 1 Annexation of 1960	12-12-60	23,700	12,600
No. 2 Annexation of 1967	11-29-67	27,000	26,294
No. 3 Annexation of 1967	11-30-67	502,000	629,245
Yuma M. W. D.			
No. 1 Annexation of 1967	12-16-63	789,600	474,661
No. 2 Annexation of 1967	11-21-67	12,300	100,515
No. 3 Annexation of 1969	11-24-69	14,400	15,536
Total		\$27,612,179 (a)	\$ 12,262,520

\* Annual interest charge on outstanding balance is greater than tax levy based on maximum MWD tax rate of 75¢ per \$100 of assessed valuation.  
(a) Figures do not total due to omission of cents.

Table 21  
WATER SALES BY METROPOLITAN WATER DISTRICT  
Fiscal Years 1941-42 to 1974-75

Year	To Member Municipalities						
	Natural Water		Treated Water		Total to Agencies	To Others	Total
	Acre feet	Per cent	Acre feet	Per cent	Acre feet	Acre feet	Acre feet
1941-42	0	0	9,372.6	100	9,372.6	70.7	9,443.3
1942-43	0	0	14,457.8	100	14,457.8	2,626.4	17,084.2
1943-44	0	0	15,874.9	100	15,874.9	3,301.8	19,176.7
1944-45	0	0	30,591.3	100	30,591.3	1,715.7	32,307.0
1945-46	0	0	46,685.8	100	46,685.8	1,264.2	47,950.0
1946-47	0	0	59,861.8	100	59,861.8	524.0	60,385.8
1947-48	41,093.5	36	71,995.4	64	113,088.9	116.8	113,255.7
1948-49	71,642.6	49	73,237.1	51	144,879.7	128.4	145,008.1
1949-50	69,308.0	49	72,936.0	51	142,244.0	23,371.6	165,615.6
1950-51	75,000.9	54	63,493.1	46	138,494.0	26,978.6	165,472.6
1951-52	66,674.3	44	84,616.1	56	151,290.4	42,464.2	193,754.6
1952-53	30,845.3	24	99,589.6	76	130,434.9	31,682.4	162,117.3
1953-54	120,773.0	51	115,550.6	49	236,323.6	7,820.7	244,144.3
1954-55	192,544.7	59	134,923.3	41	327,468.0	58,184.5	385,652.5
1955-56	190,337.2	53	169,506.4	47	359,843.6	45,562.9	405,406.5
1956-57	286,059.1	60	191,110.7	40	477,169.8	66,074.1	543,243.9
1957-58	266,024.1	57	197,900.0	43	463,924.1	75,612.8	539,536.9
1958-59	244,354.2	46	282,248.1	54	526,602.3	74,107.1	600,709.4
1959-60	425,019.0	58	304,874.8	42	729,893.8	3,523.2	733,417.0
1960-61	594,521.1	64	335,207.2	36	929,728.3	4,999.4	933,827.7
1961-62	608,811.0	66	312,975.9	34	921,786.9	3,676.9	925,463.8
1962-63	668,881.8	66	348,092.8	34	1,016,974.4	3,677.0	1,020,651.4
1963-64	671,853.4	63	388,553.9	37	1,060,407.3	3,776.7	1,064,184.0
1964-65	645,577.3	58	471,042.0	42	1,116,619.3	5,935.3	1,121,654.6
1965-66	550,630.8	52	503,424.9	48	1,054,055.7	4,821.8	1,058,877.5
1966-67	523,141.2	50	531,659.7	50	1,054,800.9	4,513.0	1,059,313.9
1967-68	514,248.1	48	557,730.9	52	1,071,979.0	4,934.9	1,076,913.9
1968-69	455,174.3	43	599,237.7	57	1,054,412.0	2,232.4	1,056,644.4
1969-70	482,256.9	41	682,846.4	59	1,165,103.3	650.0	1,165,753.3
1970-71	520,983.9	46	612,511.6	54	1,133,495.5	150.3	1,133,645.8
1971-72	590,356.9	47	656,635.9	53	1,246,992.8	549.6	1,247,542.4
1972-73	569,290.7	48	606,120.4	52	1,175,411.1	4.3	1,175,415.4
1973-74	655,057.2	52	593,177.8	48	1,248,235.0	954.2	1,249,189.2
1974-75	721,969.9	54	607,014.7	46	1,328,984.6	147.7	1,329,132.3

Table 22  
WATER PRODUCTION - METROPOLITAN WATER DISTRICT CONSTITUENT AREAS  
Figures Furnished by Metropolitan Water District

Constituent Areas	Total Water Production			Source of Water Produced - 1974-75			
	1973-74	1974-75	Percent Increase or Decrease	M. W. D.		Other	
	Amount ac. ft.	Amount ac. ft.		Amount ac. ft.	Percent of Total		
Arabelem	41,488	42,715	3	7,400	17	35,315 (a)	83
Beverly Hills	14,166	14,019	-1	11,170	80	2,849	20
Burbank	24,893	23,394	-6	9,892	42	13,502	58
Calleguas M. W. D.	71,348	66,380	-7	49,512	75	16,868	25
Central Basin M. W. D.	215,321	208,629	-3	56,293 (e)	27	152,336	73
Chino Basin M. W. D.	172,588	171,366	-1	6,840 (e)	4	164,526	96
Coastal M. W. D.	41,049	43,073	5	42,016	98	1,057	2
Compton	9,177	8,558	-6	2,626	30	6,032	70
Eastern M. W. D.	132,233	131,876	0	40,614	31	91,262 (b)	69
Foothill M. W. D.	15,082	14,939	-1	7,486	50	7,453	50
Fullerton	27,417	28,267	3	14,670	52	13,597	48
Glendale	21,518	23,242	8	8,836	38	14,406	62
Las Virgenes M. W. D.	8,795	14,118	61	13,575 (d)	96	543	4
Long Beach	70,393	69,606	-1	39,934	57	29,672	43
Los Angeles	564,704	560,297	-1	26,136 (e)	5	534,161	95
Orange County M. W. D.	266,560	269,224	1	102,224 (c) (e)	38	167,000	62
Pasadena	33,755	33,252	-1	17,727	53	15,525	47
Pomona Valley M. W. D.	75,842	79,673	5	19,170	24	60,503	76
San Diego C. W. A.	371,639	405,884	9	378,081 (d)	93	27,803	7
San Fernando	3,081	3,138	2	0	0	3,138	100
San Marino	4,742	4,765	0	0	0	4,765	100
Santa Ana	33,071	33,492	1	9,574	29	23,918	71
Santa Monica	17,229	17,119	-1	9,948	58	7,171	42
Torrance	22,864	22,101	-3	18,791	85	3,310	15
Upper San Gabriel Valley M. W. D.	235,622	175,487	-26	255 (e)	0	175,232	100
West Basin M. W. D.	169,395	167,681	-1	125,128 (e)	75	42,553	25
Western M. W. D.	224,293	203,426	-9	36,295	18	167,131	82
<b>Totals</b>	<b>2,888,265</b>	<b>2,835,821</b>	<b>-2</b>	<b>1,034,193</b>	<b>37</b>	<b>1,781,628</b>	<b>63</b>

NOTES: (a) Does not include deliveries by MWD of Orange County.  
(b) Includes 4,893 acre feet of seepage into San Jacinto Tunnel.  
(c) Does not include 14,242 acre feet delivered by Coastal MWD.

(d) Includes water placed in storage from MWD deliveries.  
(e) Does not include water delivered for replenishment purposes.

San Diego County Water Authority  
ANNUAL FINANCIAL REPORT  
YEAR ENDED JUNE 30, 1975

PEAT, MARWICK, MITCHELL & CO.  
CERTIFIED PUBLIC ACCOUNTANTS  
8550 FIFTH AVENUE  
SAN DIEGO, CALIFORNIA 92101

The Board of Directors  
San Diego County Water Authority:

We have examined the balance sheets of San Diego County Water Authority as of June 30, 1975 and 1974, and the related statements of income and expenses, changes in financial position and changes in equity and fund balances for the years then ended. Our examination was made in accordance with generally accepted auditing standards and accordingly included such tests of the accounting records and such other auditing procedures as we considered necessary in the circumstances.

In our opinion, the aforementioned financial statements present fairly the financial position of San Diego County Water Authority at June 30, 1975 and 1974, and the results of its operations and changes in financial position for the years then ended, in conformity with generally accepted accounting principles applied on a consistent basis. Supplementary data included in Schedules 1 and 2 have been subjected to the same auditing procedures and, in our opinion, are stated fairly in all material respects when considered in conjunction with the basic financial statements taken as a whole.

*Peat, Marwick, Mitchell & Co.*

August 13, 1975

## SAN DIEGO COUNTY WATER AUTHORITY

## Balance Sheets

June 30, 1975 and 1974

<u>Assets</u>	<u>1975</u>	<u>1974</u>
<b>General fund:</b>		
Current assets:		
Cash (including certificates of deposit)	\$ 6,125,062	4,848,796
Accounts receivable, net	2,262,284	2,273,496
Current installments of long-term receivables (note 2)	7,500	74,298
Inventory of water in storage	1,846,543	1,188,825
Prepaid expenses	1,668	10,012
Total current assets - general fund	<u>10,263,057</u>	<u>8,395,427</u>
Long-term receivables, excluding current installments (note 2)	21,502	29,003
Total general fund	<u>10,284,559</u>	<u>8,424,430</u>
<b>Special funds:</b>		
Debt service reserve funds:		
Cash (including certificates of deposit)	900,000	899,254
Interest receivable	-	746
Waterworks bonds, debt service funds:		
Cash (including certificates of deposit)	10,279	308,744
Deposit with fiscal agent	24,898	48,041
Taxes and interest receivable, net	31,679	2,003
U.S. Government contract fund:		
Cash (including certificates of deposit)	5,012	38,740
Taxes and interest receivable, net	4,336	787
Due from Metropolitan Water District (note 4)	4,695,399	5,152,201
Waterworks bonds, improvement funds:		
Cash (including certificates of deposit)	878,833	984,271
Accounts receivable	10,731	7,695
Trust and agency fund:		
Investment in annuity contract	3,394	-
Total special funds	<u>6,564,561</u>	<u>7,442,482</u>
Property, plant, equipment and participation rights, net (note 3)	<u>188,688,677</u>	<u>182,191,013</u>
	<u>\$ 205,517,797</u>	<u>198,057,925</u>

See accompanying notes to financial statements.

<u>Liabilities, Reserves, Equity and Fund Balances</u>	<u>1975</u>	<u>1974</u>
<b>General fund:</b>		
Current liabilities:		
Accounts payable	\$ 3,844,189	3,659,781
Advances and deposits by agencies	56,944	37,634
Total current liabilities - general fund	<u>3,901,133</u>	<u>3,697,415</u>
<b>Special funds:</b>		
Current liabilities:		
Current installments of long-term debt (note 4)	2,329,029	2,229,029
Matured bond principal and interest payable	24,898	48,041
Accounts payable	3,041	3,267
Trust and agency fund - deferred compensation payable	3,394	-
Total current liabilities - special funds	<u>2,360,362</u>	<u>2,280,337</u>
Total current liabilities	<u>6,261,495</u>	<u>5,977,752</u>
Long-term debt, excluding current installments (note 4):		
General obligation bonds payable	54,710,000	56,160,000
U.S. Government contracts	7,828,910	8,707,940
Annexation charges - Metropolitan Water District	11,797,258	12,248,900
Total long-term debt	<u>74,336,168</u>	<u>77,116,840</u>
Reserve for notes receivable (note 2)	-	66,902
<b>Equity and fund balances:</b>		
Equity in property, plant, equipment and participation rights (note 3)	112,910,004	103,833,844
Restricted balances:		
Waterworks bonds, debt service fund	41,957	310,747
U.S. Government contract fund	4,704,747	5,191,727
Appropriated funds:		
Debt service reserve funds	900,000	900,000
General fund	79,412	26,897
Unappropriated general fund balance	6,284,014	4,633,216
Total equity and fund balances	<u>124,920,134</u>	<u>114,896,431</u>
Commitment (note 5).	<u>\$ 205,517,797</u>	<u>198,057,925</u>

## SAN DIEGO COUNTY WATER AUTHORITY

## Exhibit B

SAN DIEGO COUNTY WATER AUTHORITY  
 Statements of Income and Expenses  
 Years ended June 30, 1975 and 1974

	1975	1974
Operating income:		
Water sales	\$ 18,320,053	16,135,103
Cost of sales:		
Water in storage at beginning of year	1,188,825	1,129,930
Water purchased	18,399,771	15,713,900
	19,588,596	16,843,830
Water in storage at end of year	1,846,543	1,188,825
Cost of sales	17,742,053	15,655,005
Gross margin from sale of water	578,000	480,098
Water delivery fees	129,638	146,430
Total operating income	707,638	626,528
Operating expense	727,090	629,495
Net operating loss before depreciation	(19,452)	(2,967)
Depreciation expense	843,771	821,727
Net loss from operations	(863,223)	(824,694)
Nonoperating income:		
Property taxes	5,228,332	4,513,103
Interest	790,295	738,076
Other	65,938	72,308
Total nonoperating income	6,084,565	5,323,487
	5,221,342	4,498,793
Nonoperating expense - interest	2,636,554	2,704,235
Net income	2,584,788	1,794,558
Add back provision for depreciation, an expense which did not require a current cash outlay	843,771	821,727
Net income before depreciation	\$ 3,428,559	2,616,285

See accompanying notes to financial statements.

## FINANCIAL REPORT

## Exhibit C

SAN DIEGO COUNTY WATER AUTHORITY  
 Statements of Changes in Financial Position  
 Years ended June 30, 1975 and 1974

	1975	1974
Sources of working capital:		
Operations:		
Water sales and other operating income, except property taxes, including earnings on investments of \$790,295 in 1975 and \$738,076 in 1974	\$ 19,305,924	17,091,917
Property tax revenue	5,228,332	4,513,103
	24,534,256	21,605,020
Less cost of water, operating and other expenses, including interest on bonded debt of \$2,636,554 in 1975 and \$2,704,235 in 1974	21,949,468	19,810,462
Net income	2,584,788	1,794,558
Add back depreciation charged as expense but not requiring a cash outlay	843,771	821,727
Working capital provided by operations	3,428,559	2,616,285
Additions to equity and fund balances, other than income:		
Direct payments by member agencies to Metropolitan Water District	7,386,236	6,756,013
Contributions by member agencies for property, plant and equipment	52,679	61,913
Annexation charges	-	2,600
Decrease in net assets of waterworks bonds, improvement funds, applied to new construction	102,176	550,013
Special fund balances applied to debt service:		
Waterworks bonds, debt service funds	268,790	-
U.S. Government contract fund	486,980	436,242
	\$ 11,725,420	10,423,066
Uses of working capital:		
Long-term debt maturities	2,680,672	2,777,667
Capital expenditures, net	7,341,435	6,930,989
Increase in waterworks bonds, debt service funds equities, in excess of amounts applied to debt service	-	241,649
Other	59,401	8,055
Increase in general fund working capital	1,643,912	464,706
	\$ 11,725,420	10,423,066
Changes in components of general fund working capital:		
Increase (decrease) in current assets:		
Cash (including certificates of deposit)	1,276,266	716,626
Investments	-	(212,000)
Accounts receivable, net	(11,212)	(24,614)
Current installments of long-term receivables	(66,798)	(21,553)
Inventory of water in storage	657,718	58,895
Prepaid expenses	(8,344)	1,753
	1,847,630	519,107
Increase (decrease) in current liabilities:		
Accounts payable	184,408	62,821
Deposits and advances by agencies	19,310	(8,420)
	203,718	54,401
Increase in general fund working capital	\$ 1,643,912	464,706

See accompanying notes to financial statements.

## SAN DIEGO COUNTY WATER AUTHORITY

## Statements of Changes in Equity and Fund Balances

Years ended June 30, 1975 and 1974

	<u>Total</u>	<u>General fund</u>
Balances, July 1, 1973	\$ 106,281,347	4,187,353
Additions (deductions):		
Net income before depreciation	2,616,285	528,993
Provision for depreciation	(821,727)	-
Taxes and direct payments by member agencies to Metropolitan Water District	6,756,013	-
Expenditures for property, plant and equipment:		
From general fund	-	(93,226)
From advances by member agencies	61,913	-
Increase in annexation charges	2,600	2,600
Waterworks bonds redeemed	-	-
Payments on U.S. Government contracts	-	-
Interfund transfers	-	34,393
Balances, June 30, 1974	114,896,431	4,660,113
Additions (deductions):		
Net income before depreciation	3,428,559	1,814,196
Provision for depreciation	(843,771)	-
Taxes and direct payments by member agencies to Metropolitan Water District	7,386,236	-
Expenditures for property, plant and equipment:		
From general fund	-	(172,370)
From advances by member agencies	52,679	-
Waterworks bonds redeemed	-	-
Payments on U.S. Government contracts	-	-
Interfund transfers	-	61,487
Balances, June 30, 1975	\$ <u>124,920,134</u>	<u>6,363,426</u>

<u>Debt service reserve fund</u>	<u>Waterworks bonds, debt service fund</u>	<u>U.S. Government contract fund</u>	<u>Equity in plant, equipment, and participation rights</u>
900,000	69,098	5,627,969	95,496,927
34,393	1,511,649	442,787	98,463
-	-	-	(821,727)
-	-	-	6,756,013
-	-	-	93,226
-	-	-	61,913
-	-	-	-
-	(1,270,000)	-	1,270,000
-	-	(879,029)	879,029
(34,393)	-	-	-
900,000	310,747	5,191,727	103,833,844
61,487	1,081,210	392,050	79,616
-	-	-	(843,771)
-	-	-	7,386,236
-	-	-	172,370
-	-	-	52,679
-	(1,350,000)	-	1,350,000
-	-	(879,030)	879,030
(61,487)	-	-	-
<u>900,000</u>	<u>41,957</u>	<u>4,704,747</u>	<u>112,910,004</u>

See accompanying notes to financial statements.

SAN DIEGO COUNTY WATER AUTHORITY

SAN DIEGO COUNTY WATER AUTHORITY

Notes to Financial Statements

June 30, 1975 and 1974

(1) Summary of Accounting Policies

The accounting policies of San Diego County Water Authority conform to generally accepted accounting principles as applicable to governmental units. The following is a summary of the more significant of such policies:

Basis of Accounting:

The Authority follows the modified accrual basis of accounting, under which expenditures, other than interest on long-term debt, are recorded when the liability is incurred and revenues are recorded when received in cash unless susceptible to accrual, i.e. measurable and available to finance the Authority's operations, or of a material amount and not received at the normal time of receipt.

Inventory of Water in Storage:

The inventory of water in storage is recorded at cost (first-in, first-out).

Property, Plant, Equipment and Participation Rights:

Property, plant, equipment and participation rights are recorded at cost. Depreciation of property, plant and equipment is computed on the straight-line method over the estimated lives of the respective items.

The Authority's liability, \$11,797,258 and \$12,248,900 at June 30, 1975 and 1974, respectively, for annexation charges due Metropolitan Water District (MWD) and interest thereon are paid by means of a special tax levied on the properties within the annexed areas. Since the collections of these taxes are remitted directly to MWD by the County of San Diego, the Authority records the net collections as a reduction in its liability to MWD and an increase in its equity in participation rights. The Authority also receives credit for participation rights payments received by MWD, both in the form of additional taxes levied and collected on properties within the Authority and direct payments made by member agencies. The Authority records such credits when received by MWD as increases in participation rights and its equity therein.

(2) Long-Term Receivables

Description	Interest rate	1975	1974
Undivided interest in notes received in settlement of judgment	5%	\$ -	66,902
Annexation charges due from special districts	-	29,002	36,399
Total long-term receivables		29,002	103,301
Less current installments of long-term receivables		7,500	74,298
Long-term receivables, excluding current installments		\$ 21,502	29,003

The Authority does not recognize income related to the notes receivable until actual collections are received. Consequently, \$66,902 was reserved at June 30, 1974.

FINANCIAL REPORT

SAN DIEGO COUNTY WATER AUTHORITY

Notes to Financial Statements, Continued

(3) Property, Plant, Equipment and Participation Rights and Equity Therein

	1975	1974
Property, plant, equipment and participation rights:		
Property, plant and equipment	\$ 93,500,107	80,064,326
Less accumulated depreciation	10,831,416	9,990,449
Net property, plant and equipment	82,668,691	70,073,877
Construction work in progress	401,656	13,433,400
Participation rights in Metropolitan Water District	105,618,330	98,683,736
Net property, plant, equipment and participation rights	188,688,677	182,191,013
Less total long-term debt	76,665,197	79,345,869
	112,023,480	102,845,144
Add:		
Construction capital projects - waterworks bonds, improvement funds, net of construction accounts payable	886,524	988,700
Equity in property, plant, equipment and participation rights	\$ 112,910,004	103,833,844
The property, plant and equipment was financed by:		
General obligation bonds	66,741,538	54,985,094
U.S. Government contract	14,873,408	14,873,407
Current revenues	10,790,390	9,279,942
Agencies contributions	1,094,771	925,883
Total property, plant and equipment	\$ 93,500,107	80,064,326

SAN DIEGO COUNTY WATER AUTHORITY  
Notes to Financial Statements, Continued

(4) Long-Term Debt

Description	Interest rate	1975	1974
General obligation bonds:			
Waterworks bonds, 1957, maturing February 1, 1976-1994	1% - 6%	\$ 28,635,000	29,525,000
Waterworks bonds, 1966, maturing October 1, 1975-2004	4-1/2% - 5-1/2%	<u>27,525,000</u>	<u>27,985,000</u>
Total bonds		<u>56,160,000</u>	<u>57,510,000</u>
U.S. Government contract:			
Authority's share:			
First pipeline	-	611,049	861,049
Second pipeline	2.599%	<u>3,401,491</u>	<u>3,573,718</u>
		<u>4,012,540</u>	<u>4,434,767</u>
Metropolitan Water District's share:			
First pipeline	-	611,049	861,049
Second pipeline	2.599%	<u>4,084,350</u>	<u>4,291,153</u>
		<u>4,695,399</u>	<u>5,152,202</u>
Total U.S. Government contract		<u>8,707,939</u>	<u>9,586,969</u>
Annexation charges - Metropolitan Water District		<u>11,797,258</u>	<u>12,248,900</u>
Total long-term debt		76,665,197	79,345,869
Less current installments of long-term debt		<u>2,329,029</u>	<u>2,229,029</u>
Long-term debt, excluding current installments		\$ <u>74,336,168</u>	<u>77,116,840</u>

The Metropolitan Water District's indebtedness to the Authority represents the balance of the District's share of the cost of the first and second pipelines of the first San Diego aqueduct.

(5) Pension Plan

The Authority is a member of the California Public Employee's Retirement System which provides retirement benefits for all of its permanent employees. The total pension expense was \$44,401 in 1975 and \$37,149 in 1974 which included amortization of prior service costs to 1983. The Authority's policy is to fund accrued pension costs. There are no unfunded vested benefits.

## Schedule 1

SAN DIEGO COUNTY WATER AUTHORITY  
Operating Expense  
Years ended June 30, 1975 and 1974

	1975	1974
Water treatment	\$ 142,541	95,121
Systems operations	81,327	73,851
Maintenance of structures and plant	129,268	119,881
Administrative and general salaries	139,395	138,520
General expense and supplies	239,037	252,868
Automotive operation, maintenance and shop expense	<u>56,945</u>	<u>43,069</u>
Grand total	788,513	723,310
Less portion charged to property, equipment and other	<u>61,423</u>	<u>93,815</u>
Total operating expense	\$ <u>727,090</u>	<u>629,495</u>

## SAN DIEGO COUNTY WATER AUTHORITY

Schedule 2

## SAN DIEGO COUNTY WATER AUTHORITY

## Bonded Debt Maturities

June 30, 1975

Year ended June 30,	Waterworks Bonds		Total principal	Total interest	Total
	1957 Principal	1966 Principal			
1976	\$ 970,000	480,000	1,450,000	2,375,190	3,825,190
1977	1,070,000	500,000	1,570,000	2,310,215	3,880,215
1978	1,140,000	525,000	1,665,000	2,239,952	3,904,952
1979	1,195,000	545,000	1,740,000	2,165,437	3,905,437
1980	1,260,000	570,000	1,830,000	2,087,250	3,917,250
1981	1,330,000	595,000	1,925,000	2,009,917	3,934,917
1982	1,400,000	625,000	2,025,000	1,931,967	3,956,967
1983	1,470,000	650,000	2,120,000	1,852,260	3,972,260
1984	1,540,000	680,000	2,220,000	1,767,890	3,987,890
1985	1,620,000	710,000	2,330,000	1,678,707	4,008,707
1986	1,680,000	745,000	2,425,000	1,584,486	4,009,486
1987	1,740,000	775,000	2,515,000	1,486,521	4,001,521
1988	1,815,000	815,000	2,630,000	1,384,475	4,014,475
1989	1,880,000	850,000	2,730,000	1,277,868	4,007,868
1990	1,960,000	890,000	2,850,000	1,166,815	4,016,815
1991	2,040,000	925,000	2,965,000	1,051,020	4,016,020
1992	2,100,000	970,000	3,070,000	930,117	4,000,117
1993	2,165,000	1,015,000	3,180,000	804,537	3,984,537
1994	260,000	1,060,000	1,320,000	694,630	2,014,630
1995	-	1,105,000	1,105,000	632,747	1,737,747
1996	-	1,155,000	1,155,000	577,377	1,732,377
1997	-	1,210,000	1,210,000	519,435	1,729,435
1998	-	1,265,000	1,265,000	458,797	1,723,797
1999	-	1,320,000	1,320,000	395,465	1,715,465
2000	-	1,380,000	1,380,000	329,315	1,709,315
2001	-	1,440,000	1,440,000	260,225	1,700,225
2002	-	1,505,000	1,505,000	188,072	1,693,072
2003	-	1,575,000	1,575,000	112,612	1,687,612
2004	-	1,645,000	1,645,000	37,012	1,682,012
	\$ 28,635,000	27,525,000	56,160,000	34,310,311	90,470,311