

SAN DIEGO
COUNTY WATER AUTHORITY



TWENTY-SECOND ANNUAL REPORT

1968

SAN DIEGO COUNTY WATER AUTHORITY
Organized June 9, 1944

TWENTY-SECOND ANNUAL REPORT

OF AUTHORITY OPERATIONS

FOR FISCAL YEAR ENDING JUNE 30, 1968

Linden R. Burzell
General Manager and Chief Engineer

SAN DIEGO, CALIFORNIA
1968

TABLE OF CONTENTS

	Page
BOARD OF DIRECTORS	13
Administration	14
COMMITTEES OF THE BOARD	8
DESIGN AND CONSTRUCTION	29
Fred A. Heilbron Operations Center	29
Second Pipeline, Second San Diego Aqueduct	30
GROWTH	15
Area	15
Assessed Valuation	18
Population	17
LEGAL DEPARTMENT ACTIVITIES	34
Amendment of Authority Act	34
Anti-Trust Suits	34
Colorado River Legislation	34
LETTER OF TRANSMITTAL	11
MEMBER AGENCIES, DATE OF ENTRY AND REPRESENTATIVES	4
METROPOLITAN WATER DISTRICT, MEMBERSHIP IN	37
Assessed Valuation	38
Constituent Member Agencies and Area	37
Tax Rate	39
Water Sales	38
OFFICERS AND BOARD OF DIRECTORS	5
OPERATION AND MAINTENANCE OF AQUEDUCTS	31
Operation	31
STATISTICAL SUMMARY	9
WATER SUPPLY AND CONSUMPTION	18
Agricultural Water Use	23
Allocation of Water Among Member Agencies	27
Authority Facilities	24
Future Supplies	28
Water Deliveries and Rates	19
Water Production of Member Agencies	20
Water Quality	26
Water Supply and System	18
Water Treatment	26

FIGURES

A. Authority Area Within San Diego County	12
B. Water Production of Authority Member Agencies	22
C. Rainfall Record at San Diego, California	25
D. Composition of The Metropolitan Water District of Southern California	35
E. Water Systems of Metropolitan Water District and San Diego County Water Authority	36

TABLE OF CONTENTS

(Continued)

INDEX OF TABLES

	Table No.	Page
APPENDIX A - STATISTICAL TABLES		
Agricultural Use of Water - Fiscal Year 1967-68	10	52
Allocation of Right to Purchase Authority Water	13	55
Analysis of Colorado River Aqueduct Water	16	58
Area - Authority Member Agencies	1	42
Assessed Valuations - Authority Member Agencies and County	4	45
Assessed Valuations and Tax Rates of the Metropolitan Water District	17	59
Authority Storage in San Vicente Reservoir	11	53
Chemical Character of Natural Colorado River Water	12	54
Population - Authority Member Agencies and County	3	44
Population Growth - County and Authority Area	2	43
Sales of Colorado River Water - Fiscal Year 1967-68 ...	5	46
Unit Water Production - Per Acre and Per Capita 1967-68	9	51
Water Production - Metropolitan Water District Con- stituent Areas	15	57
Water Production of Authority Agencies - Fiscal Year 1967-68	8	50
Water Production of Authority Agencies: Fiscal Years 1958-59 to 1967-68	7	49
Water Sales - 1947-68	6	48
Water Sales by Metropolitan Water District	14	56

APPENDIX B - FINANCIAL REPORT

Annexation Charges, Assessments and Balances	87
Appropriations and Expenditures	72
Assessed Valuations and Tax Rates	83
Auditor's Report	61
Balance Sheet	62
Bonds Payable	76
Changes in Reserves and Fund Balances	64
Comments	80
Insurance Coverage	86
Investments	75
Legal Debt Margin	85
Letter of Transmittal	60
Metropolitan Water District Annexation Charges, Assessments and Balances on Authority Areas	88
Notes to Financial Statements	67
Operating Expense	70
Property, Plant and Equipment	78
Revenue	71
Revenue and Expense	66
Summary of Cash Receipts and Disbursements	74
Tax Assessments and Tax Collections	82
Tax Levies and Tax Collections	84

SAN DIEGO COUNTY WATER AUTHORITY

*Member Agencies, Date of Entry, and
Representatives on Board of Directors on June 30, 1968*

CITIES

Del Mar	Nov. 23, 1962	
O. B. Sholders		
Escondido	Oct. 9, 1950	
Lloyd M. Mitchell		
National City	June 9, 1944	
Charles G. Kerch		
Oceanside	June 9, 1944	
Robert A. Weese		
San Diego	June 9, 1944	
Baylor Brooks	Fred A. Heilbron	H. Fred Landgraf
David S. Casey	Gaylord Henry	Fred W. Simpson
John M. Cranston	Mrs. Edith Kamm	Arthur C. Wells
R. E. Graham	George Kerrigan	

IRRIGATION DISTRICTS

Helix	June 9, 1944	
Michael Fletcher, Harry Griffen, M. J. Shelton		
San Dieguito	Dec. 13, 1948	
Frank J. Cermak		
Santa Fe	Dec. 13, 1948	
R. E. Badger		
South Bay	Nov. 3, 1952	
Lloyd L. Lee, Walter L. Steele		
<i>(Includes City of Chula Vista, an independent member agency, from June 9, 1944, to Nov. 3, 1952)</i>		

MUNICIPAL WATER DISTRICTS

Bueno Colorado	June 11, 1954	
Hans H. Doe		
Carlsbad	June 16, 1954	
Allan O. Kelly		
De Luz Heights	June 28, 1967	
George Yackey		
Olivenhain	July 25, 1960	
Howard G. Golem		
Otay	Oct. 26, 1956	
Ralph W. Chapman		
Poway	April 21, 1954	
David R. Shephardson		
Rainbow	April 10, 1954	
Walter R. Beck		
Ramona	August 27, 1957	
John E. Langan		
Rincon del Diablo	June 14, 1954	
Charles A. Crytser		
Rio San Diego	June 7, 1956	
Charles C. Price		
<i>(Includes Lakeside I. D., an independent member agency from June 9, 1944 to June 7, 1956)</i>		
Valley Center	May 9, 1955	
Cartwright Smith		
Yuima	Dec. 16, 1963	
E.W. Blom		

PUBLIC UTILITY DISTRICT

Fallbrook	June 9, 1944	
Ralph A. Brown		

OFFICERS OF BOARD OF DIRECTORS



Chairman
FRED A. HEILBRON
San Diego
7-44 to 6-68



Vice Chairman
R. E. BADGER
Santa Fe
Irrigation District
9-57 to 6-68



Secretary
HANS H. DOE
Bueno Colorado
Municipal Water District
6-54 to 6-68



Treasurer
HARRY GRIFFEN
Helix
Irrigation District
7-56 to 6-68



Controller
HOWARD G. GOLEM
Olivenhain Municipal
Water District
1-62 to 6-68

EXECUTIVE OFFICERS



LINDEN R. BURZELL
Chief Manager and
Chief Engineer



W. H. JENNINGS
General Counsel

ADMINISTRATIVE STAFF



ALLEN H. JONES
Assistant Chief
Engineer



HENRY LOZANO
Chief Accounting
Officer



JOSEPH E. LESTER
Superintendent



LINDA K. DeGROOT
Executive Secretary

**BOARD OF DIRECTORS
1967-68**
For Officers, See Page 5



WALTER R. BECK
*Rainbow Municipal
Water District*
9-62 to 6-68



E. W. BLOM
*Yuma Municipal
Water District*
1-64 to 6-68



BAYLOR BROOKS
San Diego
5-54 to 10-60
4-62 to 6-68



RALPH A. BROWN
*Fairbrook Public
Utility District*
7-67 to 6-68



DAVID S. CASEY
San Diego
5-66 to 6-68



FRANK J. CERMAK
San Diego
Irrigation District
7-66 to 6-68



RALPH W. CHAPMAN
*Olney Municipal
Water District*
1-64 to 6-68



JOHN M. CRANSTON
San Diego
10-64 to 6-68



CHARLES A. CRYTSER
*Wicono del Diablo
Municipal Water District*
6-54 to 6-68



WILLIAM B. DENNIS
*Debra Heights
Municipal
Water District*
5-55 to 6-58
9-67 to 5-68



MICHAEL FLETCHER
Wells
Irrigation District
10-63 to 6-68



R. E. GRAHAM
San Diego
7-63 to 6-68



GAYLORD L. HENRY
San Diego
11-64 to 6-68



MRS. EDITH KAMM
San Diego
8-65 to 6-68



ALLAN O. KELLY
*Carlsbad Municipal
Water District*
11-63 to 6-68



CHARLES G. KERCH
National City
5-57 to 8-65
7-66 to 6-68

**BOARD OF DIRECTORS
1967-68**
(Continued)



GEORGE KERRIGAN
San Diego
9-53 to 6-68



H. FRED LANDGRAF
San Diego
10-55 to 6-68



JOHN E. LANGAN
*Ranoma Municipal
Water District*
4-61 to 6-68



LLOYD L. LEE
San Ray
Irrigation District
4-61 to 6-68



LLOYD M. MITCHELL
Escondido
12-56 to 6-68



CHARLES C. PRICE
*Rio San Diego
Municipal
Water District*
7-58 to 6-68



M. J. SHELTON
MeDe
Irrigation District
2-48 to 6-56
10-65 to 6-68



DAVID R. SHEPARDSON
*Poway Municipal
Water District*
4-54 to 6-68



O. B. SHOLDERS
Del Mar
4-63 to 6-68



FRED W. SIMPSON
San Diego
7-44 to 6-68



CARTWRIGHT SMITH
*Valley Center
Municipal Water District*
3-65 to 6-68



WALTER L. STEELE
South Ray
Irrigation District
9-62 to 6-68



ROBERT A. WEESE
Oceanside
3-53 to 6-68



ARTHUR C. WELLS
San Diego
2-53 to 6-68



GEORGE YACKEY
*De Luz Heights
Municipal
Water District*
6-68 to 6-68

COMMITTEES OF THE BOARD

June 30, 1968

Engineering and Operations Committee

Robert A. Weese, *Chairman*
 Baylor Brooks, *Vice Chairman*
 R. E. Badger
 E. W. Blom
 Frank J. Cermak
 Ralph W. Chapman
 Hans H. Doe
 Howard G. Golem
 R. E. Graham
 Allan O. Kelly
 Lloyd L. Lee
 M. J. Shelton
 Oliver B. Sholders
 George F. Yackey

Organization and Personnel Committee

Fred W. Simpson, *Chairman*
 David R. Shepardson, *Vice Chairman*
 Frank J. Cermak
 Ralph W. Chapman
 Michael Fletcher
 Howard G. Golem
 Charles G. Kerch
 John E. Langan
 Charles C. Price
 Cartwright Smith
 Robert A. Weese
 George F. Yackey

Legal and Claims Committee

John M. Cranston, *Chairman*
 David R. Shepardson, *Vice Chairman*
 Walter R. Beck
 Gaylord L. Henry
 Mrs. Edith Kamm
 Allan O. Kelly
 Charles G. Kerch
 George Kerrigan
 H. Fred Landgraf
 Walter L. Steele
 Arthur C. Wells

Public Education and Information Committee

Lloyd M. Mitchell, *Chairman*
 Hans H. Doe
 R. E. Graham
 Harry Griffen
 Fred A. Heilbron
 Lloyd L. Lee

Water Problems and Policy Committee

Hans H. Doe, *Chairman*
 R. E. Badger, *Vice Chairman*
 Baylor Brooks
 Ralph A. Brown
 David S. Casey
 John M. Cranston
 Charles A. Crytser
 R. E. Graham
 Harry Griffen
 Fred A. Heilbron
 Lloyd L. Lee
 Lloyd M. Mitchell
 Fred W. Simpson
 Cartwright Smith

Finance and Insurance Committee

Arthur C. Wells, *Chairman*
 Harry Griffen, *Vice Chairman*
 Walter R. Beck
 E. W. Blom
 David S. Casey
 Charles A. Crytser
 Michael Fletcher
 Gaylord L. Henry
 George Kerrigan
 H. Fred Landgraf
 John E. Langan
 Lloyd M. Mitchell
 Charles C. Price
 M. J. Shelton
 Oliver B. Sholders
 Walter L. Steele

Lands and Rights of Way Committee

Lloyd M. Mitchell, *Chairman*
 Lloyd L. Lee, *Vice Chairman*
 Ralph A. Brown
 Harry Griffen
 Gaylord L. Henry
 Charles G. Kerch
 H. Fred Landgraf
 David R. Shepardson

Administrative Code Committee

Charles C. Price, *Chairman*
 Harry Griffen
 Mrs. Edith Kamm
 Lloyd L. Lee

STATISTICAL SUMMARY

	1967-68	1966-67	Percent Change
GROWTH OF AREA			
Number of Agencies	22	22	0
Total Area—Acres	745,755	730,932	+ 2.0
Population	1,220,000	1,190,000	+ 2.5
Assessed Valuation	\$ 2,122,987,150	\$ 1,927,254,740	+ 10.2
OPERATIONS			
Water Imported by Authority—ac. ft.	228,227	206,273	+ 10.6
Water Production of Agencies—ac. ft.	288,170	256,044	+ 12.5
Local Water Used—ac. ft.	60,151	55,862	+ 7.7
Authority Water Used—ac. ft.	228,019	200,182	+ 13.9
Miles of Pipe Line	167	167	0
Miles of Patrol Roads Maintained	94	94	0
Number of Service Connections	52	52	0
FINANCIAL			
Revenues:			
Water Revenue	\$ 7,210,940	\$ 6,628,375	+ 28.1
Other Revenue	855,124	881,156	- 3.0
Taxes	2,205,101	2,144,048	+ 2.8
Expenditures:			
Operation and Maintenance	\$ 304,825	\$ 292,909	+ 4.1
Purchase of Water	6,752,391	5,458,738	+ 23.7
Payments on Outstanding Debt.	1,319,030	1,329,030	- 0.8
Total Investment in Plant:			
Total Fixed Assets	\$ 116,648,886	\$ 110,767,477	+ 5.3
Long-term Debt	62,639,695	61,672,956	+ 1.6

August 15, 1968

Board of Directors
San Diego County Water Authority

Gentlemen:

The Twenty Second Annual Report of the Authority covering activities during the fiscal year ending June 30, 1968, has been prepared and is transmitted herewith.

Metropolitan Water District's plans for its portion of new aqueducts to serve San Diego are proceeding on schedule, including all facilities necessary to convey State Project Water to San Diego as soon as it becomes available at the Perris Reservoir site in 1972. Facilities which are now in the design stage are being planned to meet the needs of the Authority until about the year 1990.

The aqueducts now operated and maintained by the Authority remain in excellent condition and are fully capable of providing for all of the demands for imported Colorado River water as forecast by the member agencies until the year 1970 or later. The schedule for the design and construction of the next increment, 10.6 miles of the Second Pipeline of the Second San Diego Aqueduct to San Marcos, provides for completion in fiscal year 1969-70. This new facility will nearly double the Authority's aqueduct capacity.

The attached financial reports summarize the Authority's financial position and indicate that all operating requirements have been financed from the surcharge of \$1.25 per acre foot on the sale of water plus other non-operating revenues.

Very truly yours,

Linden R. Burzell
LINDEN R. BURZELL
General Manager and
Chief Engineer

Fred A. Heilbron
Operations Center
Escondido, California

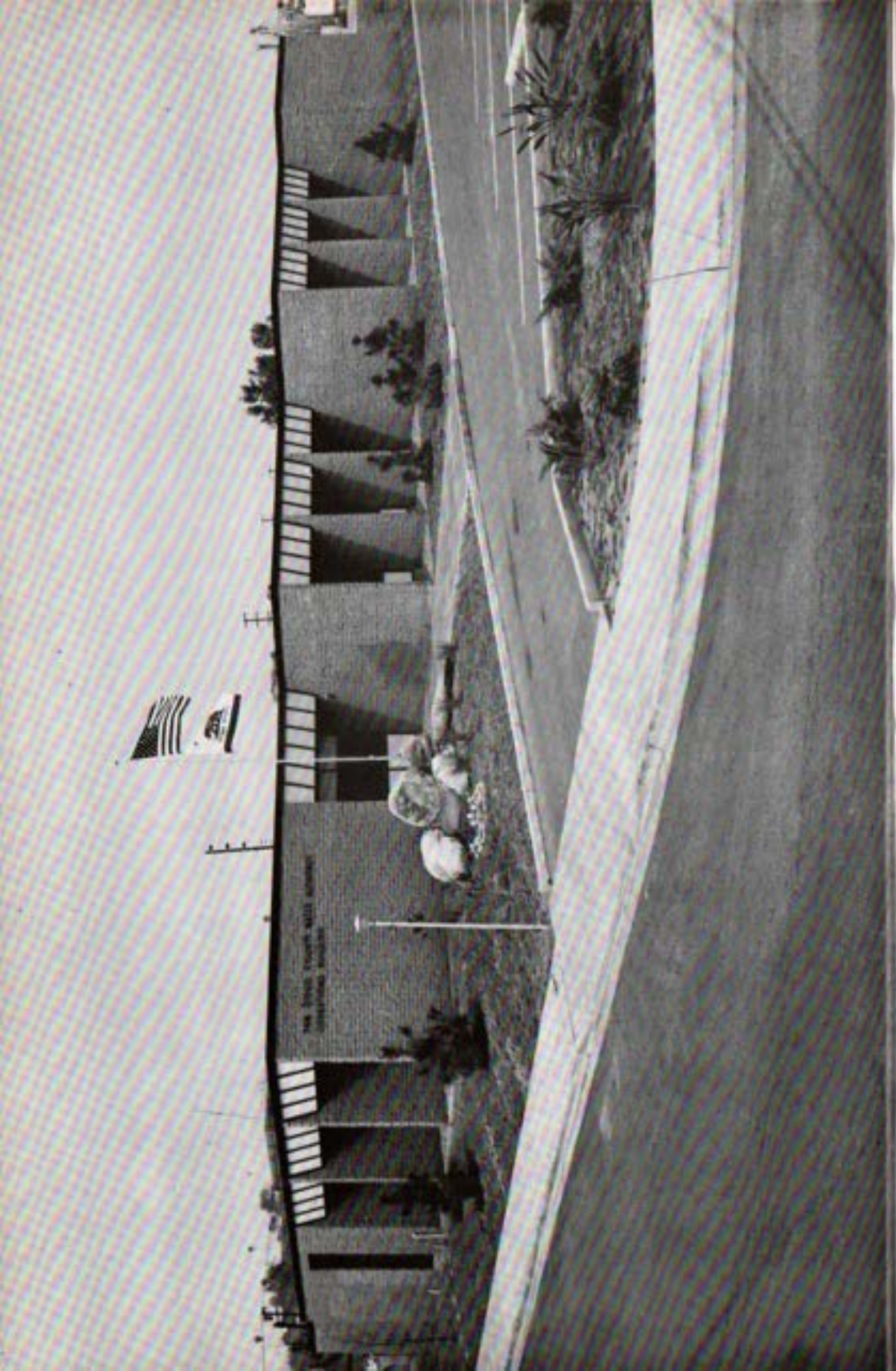




Figure A. Authority Area Within San Diego County.

REPORT OF ACTIVITIES

FISCAL YEAR - 1967 - 68

The San Diego County Water Authority was formed in 1944 under the County Water Authority Act passed by the State Legislature in 1943 to provide water for municipal, domestic and other beneficial uses throughout San Diego County. It now imports nearly all the water used in San Diego County from the Colorado River, 300 miles away, "wholesaling" the water to member agencies. It is a public corporation with the right to sue or to be sued and to acquire, hold or dispose of real and personal property. Its powers, privileges and duties as provided in the County Water Authority Act of 1943 are exercised through a Board of Directors. Like a municipal corporation, it can exercise power of eminent domain and condemn private property for public use. Moreover, the Authority is empowered to construct and maintain works and facilities across or alongside public lands, and may borrow money and incur indebtedness up to a maximum of 15 per cent of taxable property in its area. It may levy and collect taxes, enter into contracts, employ personnel and establish offices and may join other public corporations for the purpose of carrying out its powers.

BOARD OF DIRECTORS

During the fiscal year 1967-68 the Water Authority was governed by a board of directors consisting of thirty-five members, each appointed by the governing bodies of the Authority's 22 member agencies. Each of the Authority's member agencies may have one representative serving as a Water Authority director, plus an additional director for each \$115 million of assessed valuation as determined by the San Diego County Assessor. During the period of the present report, three agencies were represented by more than one director: the City of San Diego by eleven, Helix Irrigation District by three and the South Bay Irrigation District by two.

The officers of the Board of Directors are elected biennially in July of even-numbered years by members of the Board of Directors. Directors Fred A. Heilbron, Ray E. Badger, and Hans H. Doe continue to occupy the offices of Chairman, Vice Chairman, and Secretary, respectively. The office of the Treasurer, a part-time appointive position, is held by Director Harry Griffen. The office of Controller, another part-time appointive position, is held by Director Howard G. Golem.

SAN DIEGO COUNTY WATER AUTHORITY

The Authority Board of Directors maintains eight permanent committees, each giving initial consideration to Board problems within its scope, as outlined in Section 2.2 of the Administrative Code. The results of committee deliberations are transmitted to the Board with recommendation for action. The standing committees are Finance and Insurance; Engineering and Operations; Organization and Personnel; Water Problems and Policy; Lands and Rights of Way; Legal and Claims; Public Education and Information, and Administrative Code. Directors are appointed to committees by the Chairman of the Board. Membership of each of the standing committees is shown on page 8 of this report. As special problems arise, special committees are appointed to meet the needs.

In July, 1967, Mr. Ralph A. Brown succeeded Mr. Franz R. Sachse, who resigned from the Water Authority Board as director representing Fallbrook Public Utility District. Mr. Cartwright Smith was reappointed to the Authority Board to represent the Valley Center Municipal Water District.

After the annexation of the De Luz Heights Municipal Water District, Mr. W. B. Dennis was appointed to represent that district in September, 1967. Mrs. Edith Kamm was reappointed to the Board to represent the City of San Diego during the same month.

In May, 1968, Mr. Charles C. Price was reappointed the Water Authority director representing the Rio San Diego Municipal Water District.

Mr. George Kerrigan and Mr. H. Fred Landgraf were reappointed as two of the Water Authority directors representing the City of San Diego in June, 1968.

Mr. George Yackey was appointed in June, 1968 to represent the De Luz Heights Municipal Water District on the Authority Board to fill the unexpired term of the late W. B. Dennis.

Administration

The Water Authority employed a staff of 54 during the fiscal year. Twenty-two members of the total Water Authority staff serve in administration, engineering, financial, operation, maintenance, stenographic and clerical positions, and 32 serve in new project engineering design, surveying and inspection capacities at the San Diego headquarters and Fred A. Heilbron Operations Center.

During the fiscal year, recognition was given Robert L. Alexander and Keith Harris for 6 years of Water Authority service, and Linda

K. DeGroot, Maurice Doyle, Richard R. Evans, Buckley L. Ogden, Jack C. Webb, and Gary G. Weltzheimer for 3 years of service to the Water Authority.

The following Authority employees retired during the year: Lee D. Purdin, Project Construction Engineer; Albert Fidell, George D. Neiley, and Jess T. Quaid; Messrs. Fidell and Quaid after having served the Authority over 20 years.

Representatives of the Water Authority continued to undertake speaking engagements, appearing before community organizations, civic groups, schools and public bodies. The themes stressed by the speakers were Water Authority operations related to individual areas, outlines of the history and purpose of the Authority, the water supply from the Colorado River, and the planned supply from Northern California.

Under the direction of the Public Information and Education Committee, information concerning Authority activities was prepared and disseminated to news media by the Authority's public relations consultant's office.

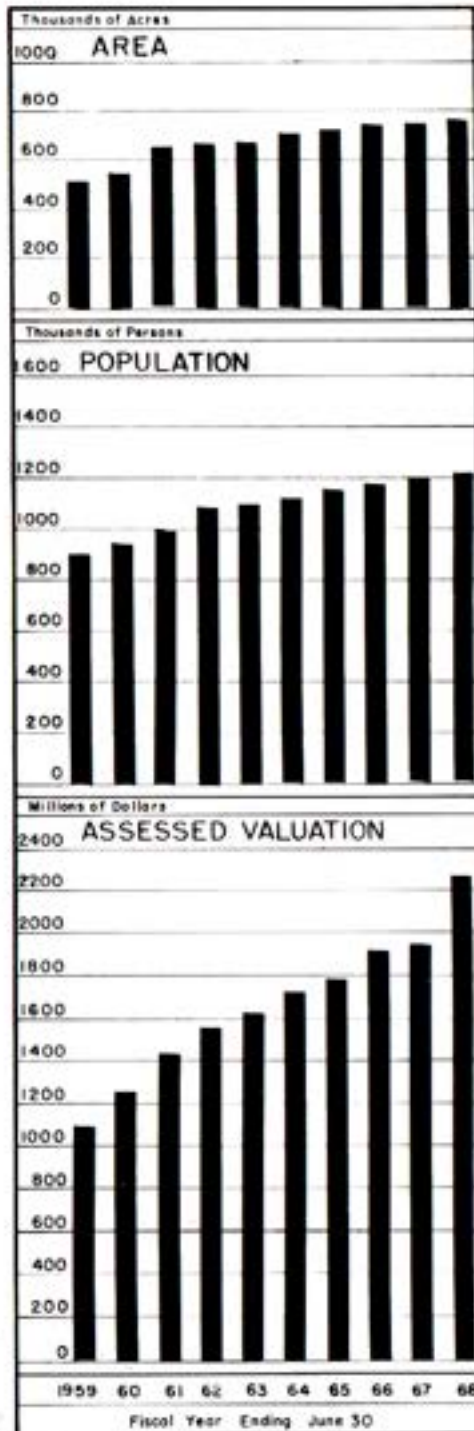
Two inspection visits were made by Directors during 1968. The first, as guests of Metropolitan Water District to Oroville Dam, and then south to the main components of the California State Water Project, and second, the annual inspection tour of a selection of the Authority's major installations.

In June the Authority joined the MWD in exhibiting a static display at the San Diego County Fair. The Authority's section showed color and also black and white photo enlargements representative of both contemporary and historical water supply within the County.

GROWTH

Area

The area of the Authority increased during the fiscal year. Annexations to member agencies and the resulting change in boundaries increased the total acreage within the Authority by 14,823 acres. As of June 30, 1968, a total of 745,755 acres or 1165 square miles were included within the Authority. Ninety three percent of the total population of San Diego County reside within the San Diego County Water Authority.



The boundaries of the Authority now encompass 27 percent of the area within San Diego County and 81 percent of all that area lying between the Cleveland National Forest and the Pacific Ocean as shown on Figure A.

Overlapping areas continue to exist in the Authority although efforts are being made to encourage member agencies to eliminate overlapping boundaries through appropriate action.

An overlapping area is land lying within the boundaries of two member agencies. The overlapping portion having been originally in one agency and subsequently annexed by the other, which was better able to serve the area with water. The major overlapping areas are due primarily to the expansion of cities into areas already within other member agencies of the Authority.

At the present time 10,007 acres lie within cities which overlap portions of adjacent member agencies. The Authority Act provides means to correct an overlapping area by exclusion from one agency or an area may be concurrently excluded from one agency and annexed to another by mutual consent, without the area being excluded from the Authority or the Metropolitan Water District, provided permission to do so is first obtained from the Authority.

The area within each member agency, the changes which have occurred therein during the past year, and the percentage of each agency's area to that of the entire Authority are shown in Table 1. As shown in this table, the City of San Diego continues to have the largest area, equal to 26.11 percent of the total area within the boundaries of the Authority.

The following concurrent annexations to the respective districts, the San Diego County Water Authority, and the Metropolitan Water District were completed during the year: Rainbow No. 3 Concurrent Annexation, consisting of 8,630 acres contiguous to and lying easterly of the present district boundaries, directly south of the Riverside County line; Valley Center Municipal Water District No. 2 and No. 3 Concurrent Annexations, consisting of 2,500 and 100 acres, respectively, contiguous to and lying easterly of Vally Center Municipal Water District; Olivenhain No. 4 Concurrent Annexation, consisting of 360 acres contiguous to and lying south of the District; Yuima No. 1 Concurrent Annexation, consisting of four parcels contiguous to the District and having an area of 351 acres; Ramona No. 4 Concurrent Annexation and Ramona Dos Picos Concurrent Annexation, consisting of 2393 and 79 acres, respectively, contiguous to the District.

The Authority's 1967 Statement of Change of Boundaries, under state law required to be filed by the Executive Secretary of the Board of Directors prior to January 1, 1968, was filed with the State Board of Equalization, the County of San Diego, and The Metropolitan Water District of Southern California December 27, 1967. As shown on the Statement, there were 35 changes made during the year, 12 of which changed the boundaries of the Authority either by annexation or by exclusion. This Statement is the basis for determination of the assessed valuation by the Assessor of San Diego County who levies the Authority tax rate as established in August by the Authority Board of Directors.

Population

The population within the Authority area continued to expand at a steady rate. The population census figures for each decade beginning in 1910, together with the estimated population for the years 1961 through 1968, are shown in Table 2. Data pertaining to individual member agencies are shown in Table 3.

The City of San Diego continues to be the most populous member agency and now contains 680,500 persons or 56 percent of the total residing within the Authority. The De Luz District has the smallest population. The City of La Mesa continues to be the most densely populated area within the Authority with 7.71 persons per acre. The cities of National City and El Cajon have densities of 7.04 and 6.50, respectively.

The average population per acre of the Authority has increased 3 percent during the past eight years to 1.64 persons per acre or 1,047 persons per square mile.

Assessed Valuation

The Authority maintains a record of boundary changes. A Statement of Change of Boundaries is filed annually with the Assessor of San Diego County. The Assessor determines the assessed valuation of all taxable property lying within the Authority boundaries. This assessed valuation becomes the basis for the Authority's tax levy. The Auditor of the County certified to the Authority that the assessed valuation of taxable property for the 1967-68 tax levy was \$2,122,987,150, an increase of \$195,732,410 or 10.2 percent over 1966-67. The assessed valuation of taxable property of each member agency of the Authority is shown in Table 4. Prior to the compilation of this report, the assessed valuation for 1968-69 was received and has been included in Table 4 for convenience. This table shows that the assessed valuation of taxable property within the boundaries of the Authority increased by \$159,107,210 or 7.5 percent. The average assessed valuation for the Authority increased from \$2,904 per acre in 1967-68 to \$3,060 per acre in 1968-69.

WATER SUPPLY AND CONSUMPTION

Water Supply and System

The San Diego County Water Authority continued to receive its entire supply of water from the Colorado River through the facilities of The Metropolitan Water District of Southern California. At the present time, the Authority has a preferential right to the District's water supply of about 8 percent. This preferential right results from payments in the form of taxes and annexation charges paid to Metropolitan Water District. Payments for water to the District are not included in the calculation of preferential right. The Metropolitan Water District delivered municipal water throughout the year on the basis of requirements and did not invoke preferential right as the basis for water deliveries.

Metropolitan Water District diverts Colorado River water into the San Diego Aqueducts near San Jacinto. The Water Authority accepts the delivery at a point approximately six miles inside San Diego County. The First Aqueduct has a reservoir at the northerly end where approximately 900 acre feet can be stored. There is no storage on the Second San Diego Aqueduct; however, substantially all of the Auld Valley Reservoir site, located in Southern Riverside County, has been purchased by the Metropolitan Water District. When completed, up to 36,000 acre feet of water will be stored in this Southern Riverside County reservoir located at the southerly end of the canal section which has a capacity of 1,000 cubic feet per second.

Capacity of the First San Diego Aqueduct is 196 c.f.s. and the Second San Diego Aqueduct has a nominal capacity of 250 c.f.s. The three months of highest flow in the two aqueducts were October, 1967 and May and June, 1968, with average flows of 378.1, 434.7, and 450.5 c.f.s., respectively. As aqueduct flow nears capacity during the peak summer period, it will be necessary for the Authority's member agencies to rely on storage to a greater and greater extent, until the second pipeline to the Second San Diego Aqueduct is completed.

The total delivered by the Authority's system was 228,227 acre feet as compared with 206,273 acre feet during the previous year. The quantity delivered amounted to 71 percent of the maximum of 320,000 acre feet which could be delivered, assuming continuous operation of both aqueducts at capacity for the entire year.

The lowest rate of flow occurred in December, 1967, as a consequence of aqueduct shutdowns and heavy rainfall. Aqueduct flow was 8,016 acre feet in December, 1967. Maximum monthly flow occurred in June of 1968 with delivery of 26,805 acre feet.

Water Deliveries and Rates

Water deliveries to all member agencies are shown in Table 5. The agencies purchased 233,270 acre feet during the year; an additional 2,462 acre feet was placed in Authority storage, and 20,275 acre feet was stored by Metropolitan. Member agencies withdrew from storage a total of 8,919 acre feet. Based on the year's experience, aqueduct carrying capacity remains ample to meet member agencies' expanding requirements for several years.

The quantities of water delivered to individual member agencies for the eight-year period from 1960 to 1968 are shown in Table 6, together with the total quantity of water purchased by each agency since the Authority first began delivery of water in 1947. This year's sales increased over 1966-67 by 15.2 percent.

The Authority continues to deliver water to a government project for Metropolitan Water District. This is the State Forestry Camp located east of Rainbow within the Rainbow Concurrent Annexation No. 3. The total quantity of water delivered under contract was 18 acre feet, compared with 32 acre feet in the previous year.

The Water Authority charge for water is the rate charged by Metropolitan Water District plus a surcharge of \$1.25 per acre foot. Prior to September 1, 1964, the surcharge was \$2.00 per acre foot. In August, 1964, the Board of Directors of the Authority adopted a resolution which reduced the rate to \$1.25 which is sufficient presently to pay all Authority expense except capital cost.

SAN DIEGO COUNTY WATER AUTHORITY

The Metropolitan Water District maintains a policy of announcing its water rates for approximately three years in advance. During recent years, Metropolitan has increased its water rates each year, and further annual increases are scheduled. A summary of County Water Authority water rates for untreated Colorado River water supplied and to be supplied to Authority members since July 1, 1958, follows:

**SUMMARY OF WATER RATES
(Dollars Per Acre Foot)**

From	To	MWD	Authority	Total	Agricultural Rebate	Resulting Agricultural Rate
7/1/58	1/1/61	15.00	2.00	17.00	3.00	14.00
1/1/61	1/1/62	17.00	2.00	19.00	4.25	14.75
1/1/62	1/1/63	19.00	2.00	21.00	5.50	15.50
1/1/63	1/1/64	21.00	2.00	23.00	6.75	16.25
1/1/64	7/1/64	24.00	2.00	26.00	9.00	17.00
7/1/64	9/1/64	25.00	2.00	27.00	9.75	17.25
9/1/64	7/1/65	25.00	1.25	26.25	9.75	16.50
7/1/65	7/1/66	28.00	1.25	29.25	12.00	17.25
7/1/66	7/1/67	31.00	1.25	32.25	14.00	18.25
7/1/67	7/1/68	34.00	1.25	35.25	16.00	19.25
7/1/68	7/1/69	37.00	1.25	38.25*	18.00	20.25*
7/1/69	7/1/70	40.00	1.25*	41.25*	20.00	21.25*
7/1/70		44.00	1.25*	45.25*	23.00	22.25*

*Subject to change.

In order to obtain the agricultural rebate, it is necessary for the Authority to certify to the Metropolitan Water District as to the quantities of water used for agricultural purposes. Rebates granted to the Authority by the District are paid in full to the agencies which had previously certified that such water was used for agricultural purposes.

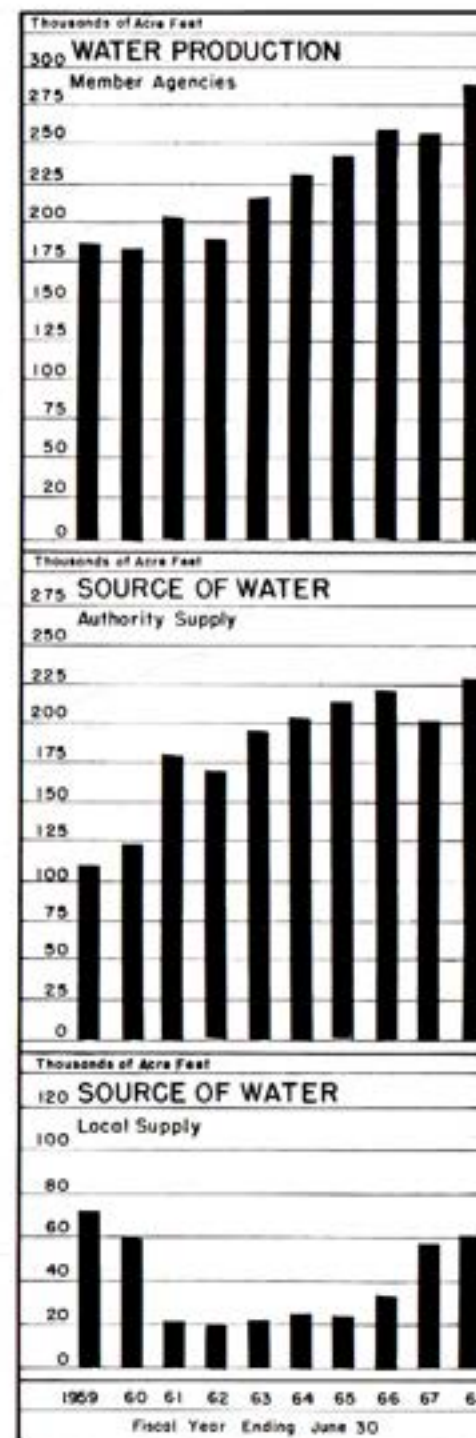
Water Production of Member Agencies

"Water production" describes that quantity of water which an agency must produce from all its sources to meet the demands of its consumers, plus the losses which occur between the sources of supply and the consumers, including leakage, losses from breaks, evaporation from distribution reservoirs, and waste resulting from normal operations. Sources of supply may include impounding reservoirs, wells, and the Authority system.

WATER SUPPLY AND CONSUMPTION

The total water production of the twenty-two member agencies is shown in Table 7. Every operating member agency indicated an increase in water production over the previous year; the total increased from 256,044 acre feet to 288,170 acre feet. Maximum monthly production occurred in August, 1967 when 34,430 acre feet of water was required to meet the combined demand of the member agencies' consumers, an increase of 2 percent over the previous year's maximum monthly production. Minimum monthly production occurred in December, 1967 when 11,850 acre feet of water was produced. 327 acre feet more water than was used in the minimum month of previous year. Several Authority agencies have extensive local water supplies available. The heavy rainfall of November and December, 1967 provided good runoff so that production of local water increased to 60,151 acre feet or 20.9% of the total.

The wells in Pauma Valley produced 5,954 acre feet of water for the several agencies within the Yuima District, The San Luis Rey River system and the Warner Ranch wells owned by the Vista Irrigation District, a sub-agency of Bueno Colorado Municipal Water District, produced 15,440 acre feet for distribution within Bueno Colorado Municipal Water District, Rincon del Diablo Municipal Water District and the City of Escondido. California American Water Company produced approximately 4,740 acre feet of local water within its service area which included National



SAN DIEGO COUNTY WATER AUTHORITY WATER PRODUCTION

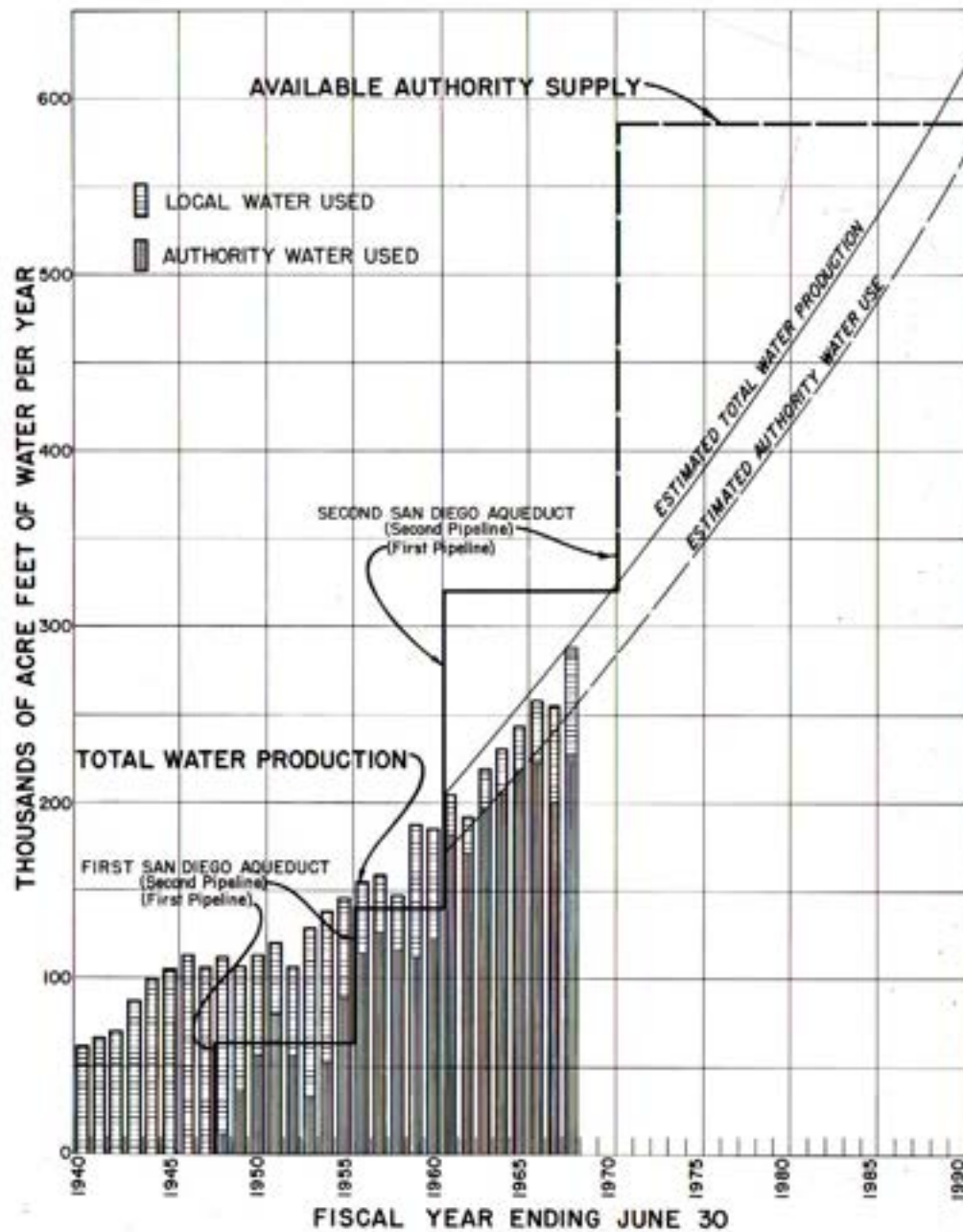


Figure B. Water Production of Authority Member Agencies

City and South Bay Irrigation District. The most extensive reservoir system within San Diego County Water Authority is owned by the City of San Diego. The City system produced 28,850 acre feet of local water during the year, 5,780 acre feet of which was delivered for use in areas outside of the Authority. Detailed statistics on water production are in Table 8.

A comparison of water production by the member agencies can be found in Table 9. This table lists water production based on area and population in acre feet per acre per year, and acre feet per capita per year. The water systems of member agencies are serving an estimated 310,610 acres out of the 745,755 acres or 42 percent of the total area of the County Water Authority.

Volume of water used per year per unit area varies a great deal depending on the state of development, type of soil, type of crop, and on other variables. The Rainbow and Yuima Municipal Water Districts are intensively irrigated agricultural districts with water requirements of 1.80 and 2.01 acre feet per acre, respectively. The relatively undeveloped Olivenhain Municipal Water District and Ramona Municipal Water District report 0.12 and 0.19 of an acre foot per acre, respectively. Water production information for the De Luz District is not yet available. The Authority average is 0.91 of an acre foot per acre on the 310,610 acres served.

Per capita water use within the Authority increased to 0.23 of an acre foot per year. Yuima Municipal Water District reports 6.62 acre feet per capita based on a population of 1,200 persons which reflects the high agricultural demand.

Figure B shows the combined water production of the Authority member agencies and compares production with available local supply.

Columns representing annual production are shaded to show contrast between water obtained from local sources and that which has been supplied by the Water Authority from the Colorado River. The chart shows the expanding use of Authority water and the year to year changes in the quantity of available local water.

Projections of future production of water are based on the assumption that additional water will be available when needed. The staff of the Authority has predicted that additional aqueduct facilities will be required to serve the Authority by the year 1970.

Agricultural Water Use

Agricultural water use amounted to 32.0 percent of the total of 282,390 acre feet produced by Authority agencies. The Metropolitan Water District allows a rebate for water used for agriculture. A

rebate of \$16.00 per acre foot during the fiscal year justified extensive record keeping and reporting by member agencies. In order to obtain the rebate, each agency must certify to the Authority with substantiating data as to the total quantity of water used for agricultural purposes. Table 10 shows quantities of water used in agriculture. This year's report shows that Yuima Municipal Water District had the highest percentage of agricultural water use at 97.2 percent.

Authority Facilities

The Authority system consists of the following facilities: The two San Diego Aqueducts south of Metropolitan's delivery point which is approximately six miles south of the Riverside County line; a portion of the Fallbrook-Oceanside Branch, extending southwesterly from the First San Diego Aqueduct at Rainbow; and the La Mesa-Sweetwater Branch Line, extending from the First Aqueduct at Slaughterhouse Canyon through Lakeside to a terminal point at Sweetwater Reservoir; plus a cross over aqueduct between the Second Aqueduct in Twin Oaks Valley to a point on the First Aqueduct just north of the City of Escondido. Treatment facilities are provided in a chlorination station in Rainbow Pass just north of the North San Diego County line where flows in both aqueducts are chlorinated.

The Authority does not own or operate storage facilities. It does, however, have a contractual right to store up to 30,000 acre feet of water in San Vicente Reservoir. The privilege results from an agreement with the City of San Diego which expires October 31, 1969. Under this agreement, the City charges \$2.20 per acre foot for the maximum amount of water in storage each year, plus fifty cents per acre foot to cover pumping charges for any water transferred from storage to the City. Under the agreement the first of any water which might be lost over the spill way would be that stored by the Authority. During the low-demand months, a total of 2,440 acre feet of water was placed in San Vicente Reservoir by the Authority for the accounts of its member agencies. A total of 8,919 acre feet was withdrawn, and 1,055 acre feet was lost by evaporation. The net result of the year's activities was a decrease of 7,533 acre feet to 15,042 acre feet in storage on June 30, 1968. Storage statistics are shown in Table 11. The Valley Center District had the largest amount credited to its account, totaling 7,500 acre feet at the start of the year or about 33 percent of all Authority water stored in San Vicente Reservoir. In October, 1964, the agreement for storage in San Vicente Reservoir was renewed on the same terms and conditions for an additional five years.

The Authority also has an agreement with the City of San Diego which permits it to store up to 2,500 acre feet of water in the City's Lower Otay Reservoir, which is the terminus of the Second San Diego Aqueduct. This storage is for operational purposes only, and the water is transferred to the City of San Diego when water is requested by the City at this location. Storage capacity for member



Figure C. Rainfall Record at San Diego, California

agencies is not provided at Lower Otay Reservoir. The City of San Diego makes a charge of \$1.00 per acrefoot for the maximum amount of storage in any 12 month period or part thereof with a minimum annual charge of \$1,000 for use of the reservoir. In addition, there are pumping charges which vary from \$2.25 to \$1.50, depending on the elevation of the water in the reservoir.

The City of San Diego prefers to take direct deliveries of water at Otay from the aqueduct at a rate of flow determined by their treatment plant requirements. The City prefers not to have water delivered into the lake. For this reason, very close control is exercised by the Authority personnel in order to prevent spillage from the aqueduct into the Reservoir.

The Authority maintains an automatic telemetering and supervisory control system. This system provides operators at Escondido with the rate of incoming flow from Metropolitan No. 3 Meter, provides remote control and rate of flow indication in the Cross-Connection, plus flow information in the final siphon on the Second Aqueduct. Remote control and rate of flow indication at San Diego No. 4, and Otay No. 3 are also provided.

Communications with Metropolitan's San Jacinto operation center is maintained by a two-way radio system between the Authority's operation center and San Jacinto.

Water Quality

Chemical constituents of dissolved solids in the aqueduct water are shown in Tables 12 and 16. The breakdown is based on analyses of water delivered to the aqueducts at San Jacinto as made by the laboratory of the Metropolitan Water District at the La Verne treatment plant. Variation in total hardness ranged from a high of 340 p.p.m. to a low of 322 p.p.m. Hardness is reported as p.p.m. equivalent of calcium carbonate. Water temperatures varied from a low of 52°F. recorded in December 1967, to a high of 83°F. reported in August and September, 1967.

Water Treatment

Throughout the year, Authority water continued to meet or exceed the minimum bacteriological quality standards as set forth in the United States Public Health Service Drinking Water Standards of 1962. Most agencies within the Authority complete their treatment of water by simple chlorination.

Over a period of years, the Authority has controlled bacterial growth on aqueduct pipe walls by "slugging" with chlorine. A continuous chlorination program has been in operation since 1965. The current policy is to apply chlorine on a continuous basis except for limited periods occasioned by mechanical shutdowns. The con-

tinuous chlorination program has proved successful and has resulted in fewer service problems. The rate of application of chlorine by the Authority ranged from 0.75 p.p.m. to 2.5 p.p.m., depending upon chlorine demand, temperature of the water, and other variables. A leak detector and automatic shutoff valve system provide protection against chlorine leakage. The chlorination station is located in Rainbow Pass, serving all three pipelines of the First and Second Aqueducts.

Several member agencies have large agricultural developments which are based on the use of irrigation water obtained from the Authority. The State Health Department has continued to recognize that Colorado River water supplied by the Authority meets drinking water standards after sterilization with chlorine. Current practice is to require dual chlorination with a time interval of at least one-half hour between the two points of application, where member agencies provide dual domestic and irrigation service. Five filtration plants are in operation within the Authority. These plants provide filtered water to the service area of five member agencies; City of San Diego, City of National City, South Bay Irrigation District, Helix Irrigation District and City of Del Mar. During the year the San Dieguito and Santa Fe Irrigation Districts developed plans for a filter plant to serve both districts. This new plant is scheduled for completion in 1970.

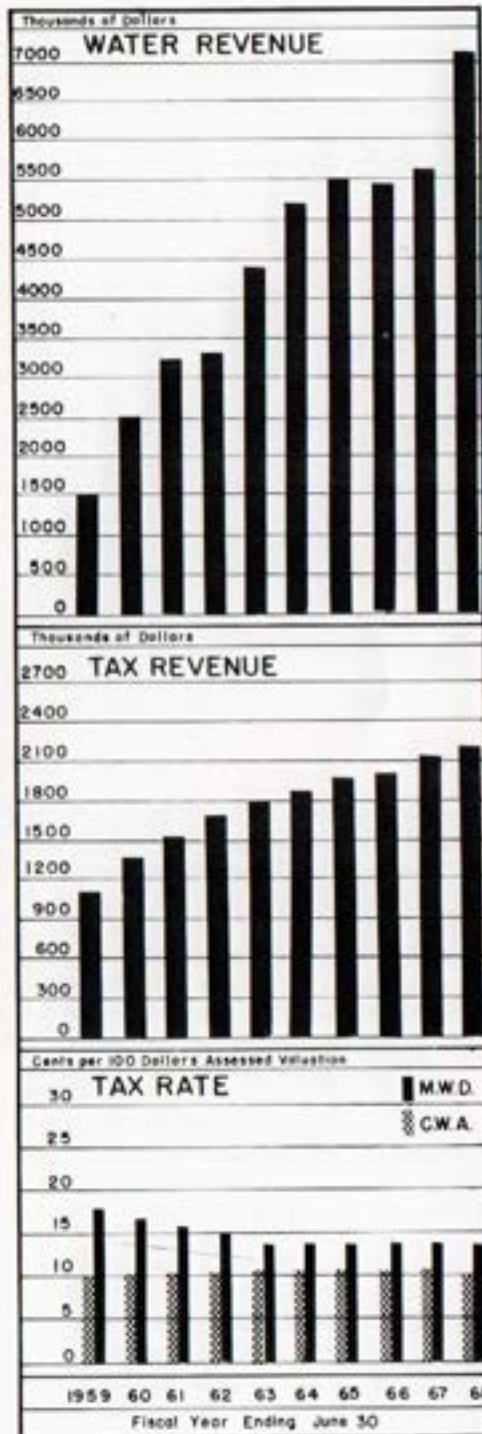
Allocation of Water Among Member Agencies

The Authority Act (Sec. 5.11) provides the method by which the water supply of the Authority must be divided among its member agencies if the total demands for water should exceed the capacity of the Authority's aqueducts.

The quantity of water to which an agency has preferential right is that portion of the available Authority water supply which bears the same relation to the whole as the total of all payments paid to the Authority by the agency, exclusive of payments for water, bears to the total of such payments received from all agencies.

Allocation by preferential right will be invoked only when the combined demand for water exceeds the capacity of the Authority to deliver and agreement cannot otherwise be reached. When water and capacity are available, agencies may purchase water without limit.

Before construction of the Second San Diego Aqueduct, demand exceeded system capacity on several occasions; however, voluntary agreement between member agencies and the Authority permitted operation without resort to the provisions of Section 5.11 of the Authority Act. The percentage allocations in effect as of June 30, 1968 and the corresponding flows available from the present aqueduct system are shown in Table 13.



Future Supplies

The Water Authority obtains its water from The Metropolitan Water District of Southern California. At the present time all of the water comes from the Colorado River by way of the Colorado River Aqueduct. The Metropolitan Water District Board has adopted a statement of policy, frequently repeated, that when additional water or distribution facilities are needed to meet demands of its member agencies, additional water and facilities will be made available.

The first major step to obtain additional water was undertaken on November 4, 1960, when the District entered into a contract with the State of California for 1,500,000 acre feet of water annually (contract subsequently amended to provide 2,000,000 acre feet) from the State aqueduct system (Feather River Project). State Project water has been scheduled for delivery to Southern California by the year 1971, and current reports state that construction is on schedule.

As a result of the U.S. Supreme Court's decision in the Case of "Arizona vs. California", less water may be available to the District annually than the 1,212,000 acre feet that the Colorado River Aqueduct is capable of bringing into Southern California. For this reason, the Metropolitan Water District's contract with the State of California has been amended to in-

crease Metropolitan Water District's quantity of State Project water from 1,500,000 to 2,000,000 acre feet per year.

The State Water Project was about 60% completed by June 30, 1968. Another 20% was actually under construction. The remaining 20% of authorized construction had not yet been started. Oroville Dam is complete and the Hyatt Powerplant is generating power. Pumping plants in the Delta, the aqueducts to the south and the joint Federal-State San Luis unit are in operation. The San Joaquin Aqueduct was placed in operation and project water was delivered to Kings and Kern Counties in 1968 for the first time. Work is proceeding on the Wind Gap and Edmonston Pumping Plants which provide for 518 feet and 1,926 feet lifts, respectively. The four Tehachapi tunnels are progressing with some difficulty, not considered unusual in tunnels of this length. West Branch facilities are under contract, as are some of the features of the main branch which will terminate at Perris Reservoir. At year's end, the Department indicated that it was maintaining its goal to deliver water on the West Branch in 1971 and to Perris Reservoir in 1972.

Responsible forecasts indicate that the remaining Colorado River entitlement, together with the State Project water, will meet the growing requirements of the Metropolitan Water District's member agencies until the year 1990. During this period of time, the population of the District is expected to increase from the present 10 million to about 20 million.

For the period beyond 1990, when additional supplies are required, many plans have been proposed which call for development of projects on the undeveloped rivers in Northern California, the Columbia River, and perhaps in Canada. These many proposals, together with sea water desalting, are being investigated by the Water Authority, the Metropolitan Water District, the State of California, and the Federal Government.

Figure B shows the increase in water requirements within the Authority since 1940. Studies indicate that additional aqueduct capacity may be required by the year 1970, by which time it will be necessary to have completed the Second Barrel of the Second San Diego Aqueduct.

DESIGN AND CONSTRUCTION

Fred A. Heilbron Operations Center

Gene Fuller Construction Company of San Diego completed construction of the Water Authority's Escondido Operations Center early in 1968, total construction cost was \$300,230. On April 26, 1968, the new facility was dedicated in honor of Chairman Heilbron and named the Fred A. Heilbron Operations Center. Several hundred guests visited the center during the open house and dedication ceremonies. General Counsel William H. Jennings served as master of ceremonies



Soils Laboratory, Fred A. Heilbron Operations Center

and Assemblyman John Stull introduced the Administrator of the California State Resources Agency, Norman B. Livermore, Jr., who made the principal address.

Second Pipeline, Second San Diego Aqueduct.

On June 7, 1966, voters throughout the Metropolitan Water District approved Proposition W for \$850,000,000 and San Diego County voters additionally approved Proposition V for \$30,000,000. The Metropolitan bond issue provides funds for expansion of its system to provide for delivery of State Project water. Among the facilities to be constructed is an Inland Feeder System which will connect Perris Reservoir with the San Diego Aqueducts.

First to be constructed is the Second Pipeline of the Second San Diego Aqueduct, from the end of the San Diego Canal near Auld Valley to the San Diego County Water Authority delivery point, approximately six miles south of the Riverside-San Diego County Line. This pipeline, approximately 100,000 feet in length, has been designed to provide the Water Authority with an additional 380 c.f.s. of capacity.

The Authority has contracted with The Metropolitan Water District of Southern California to provide engineering service on the Perris

DESIGN AND CONSTRUCTION

to Casa Loma Aqueduct and the Second Pipeline of the Second San Diego Aqueduct. During the year, the Authority's engineering department in San Diego and Project Construction office in Escondido devoted approximately 50% of its total effort to this work. At year's end, the first ten miles of 8'-3" diameter pipeline from Auld Valley to Temecula was under contract with Vido Artukovich and Son, Inc. and about 13% complete. The contract price was based on the low bid of \$5,893,520. Plans for the next ten miles of 7'-4" diameter pipe from Temecula to the delivery point, six miles inside San Diego County, were complete and the project was being advertised with a bid opening on July 23, 1968.

Bids for construction of the Canal Outlet and screening structure at the end of the San Diego Canal at Auld Valley were opened on June 20, 1968. The low bidder, J. Putnam Henck, is scheduled to receive a contract award for \$370,495 on July 9, 1968.

The Water Authority commenced the final design of Phase I of its portion of the Second Pipeline of the Second San Diego Aqueduct in May, 1968 and has scheduled the bid opening for May, 1969. Phase I will provide for construction of 10.6 miles of 7'-4" diameter pipeline from the delivery point to the Diversion Structure of the crossover aqueduct in Twin Oaks Valley near San Marcos. Preliminary surveying and drafting of rights-of-way plats on Phase II was carried as far south as the Lake San Marcos development.

OPERATION AND MAINTENANCE OF AQUEDUCTS

The Authority operates its aqueducts from a maintenance center at 660 West Fifth Avenue in Escondido. From that location, Superintendent Joseph E. Lester, directs all operational activities and all maintenance functions with a crew of fourteen employees. Operation of the aqueducts which serve all member agencies, some with very small reservoir capacity, requires that system operators be on call twenty-four hours every day. The Superintendent resides in a company-owned house at the Fred A. Heilbron Operations Center. Telephone, two-way radio, and telemetering equipment provide the necessary continuous communication throughout the Authority service area.

Operation

The Authority aqueducts and related facilities require continuous routine patrol to cope with vandalism, watch for leaks, and inspect structures, gates, culverts, and access roads.

In addition to patrol vehicles, the field forces are provided with a variety of equipment, including road graders, bulldozers, compressors, welders, and a well-equipped shop. Skilled Authority personnel perform many varied tasks, including carpentry, painting, electrical, road building, construction, and mechanical repair work.

Operating personnel and maintenance crews are dispatched by two-way radio. Base stations are maintained in San Diego, Escondido, and Hemet with a repeater station located on Palomar Mountain. The Authority maintains 15 mobile units in operation, maintenance, and construction.



Control Room, Fred A. Heilbron Operations Center

Peak aqueduct flows of 365 c.f.s. and 400 c.f.s. were recorded in July and August, respectively. These relatively low peak flows resulted from a cooperative plan whereby member agencies utilized available local water supplies to meet maximum system demand.

The operating heads of the member agencies further refined emergency operating plans and developed a cooperative water ordering procedure which allows the Water Authority more flexibility in adjusting rates of delivery to member agencies. The new operating plan permitted the Water Authority to absorb 430 orders for flow change in July and August by making 265 discretionary flow changes, which resulted in but 17 flow changes by Metropolitan at the turnout near Hemet.

As a result of requests by the Operating Heads of member agencies, the Authority has scheduled a weekend duty operator at the Fred A. Heilbron Operations Center. The duty operator will maintain office hours from 8:00 a.m. to 5:00 p.m., commencing July, 1967.

During September and October, the construction department provided a survey party to the maintenance department for relocation of several monuments on the First Aqueduct.

During November, the semi-annual patrol of the aqueducts on foot was completed as well as another cycle of valve lubrication, packing,

OPERATION AND MAINTENANCE

inspection and flushing of Venturi rings. Patrol road grading and fall culvert cleaning was commenced in anticipation of winter rains.

In November, an extensive wild fire burned through the Ramona-Poway area and around four service connection structures. No damage was sustained. By mid-month the weather changed and heavy rainfall eliminated the high fire hazard and reduced the demand for water.

A new crossover was installed to transfer water from Fallbrook No. 3 (First Aqueduct) to Fallbrook No. 5 (Second Aqueduct). The control valve and venturi cone in Fallbrook No. 3 Service Connection, damaged by cavitation, were repaired as part of the work involved in constructing this crossover. The work was completed in time for use during the Colorado River Aqueduct shutdown, beginning December 7th.

During the ten-day shutdown of the Colorado River Aqueduct in December, member agencies relied on local supplies to the maximum extent possible. The resulting demand on the Authority's system was reduced to 320 acre feet during this period.

An experimental water exchange arrangement was worked out between Helix Irrigation District, Rio San Diego and Otay Municipal Water Districts by which Helix delivered 27.5 acre feet to Rio and 30.8 acre feet to Otay from Lake Jennings storage.

In January, the first pipeline of the First Aqueduct was bulk-headed off, drained, inspected and the blowoff valves replaced.

During May and June, major patrol road improvements were made in the Slaughterhouse Canyon area near the end of the First Aqueduct and through the Los Penasquitos area in the Olivenhain District on the Second Aqueduct. This latter location heretofore has been impassable during rainy weather.

On June 27th, the Engineering and Operations Committee of the Board of Directors conducted the annual tour of Authority facilities and visited the construction site of the Second Pipeline of the Second San Diego Aqueduct near Auld Valley in Riverside County.

During the past year, Authority employees traveled 140,600 miles while operating and maintaining the systems. Routine painting, patrol and preventive maintenance continued throughout the year and included normal shop and field work with special emphasis on valve and meter servicing.

As of July 1, 1968, there were 52 service connections on the Authority's system, ranging in capacity from 2 to 180 c.f.s. Flows are regulated by control valves operated by Authority personnel as requested by the agencies.

LEGAL DEPARTMENT ACTIVITIES

Colorado River Legislation

After nearly twenty years of effort, congressional representatives of the seven Colorado River states were successful in drafting a Central Arizona Project bill each state could approve. As the end of the fiscal year approached, it appeared certain that the bill would pass.

In addition to authorizing construction of the Central Arizona Project, the Act established a priority in favor of existing projects, including 4.4 million acre feet in perpetuity to California. The Act transferred to the federal government the obligation of satisfying the Mexican Water Treaty and made it the first obligation of any water augmentation project. The Lower Basin Development Fund is provided for, and the Secretary of The Interior is directed to conduct studies of the long-range water supply available and the long-range water requirement in each water resource region of the Western United States.

Amendment of Authority Act

During the 1968 regular session of the California Legislature, Assemblyman Pete Wilson, at the Authority's request, guided a bill through the Legislature which would amend the County Water Authority Act. The bill changed the method of calculating the preferential right to purchase water supplied by the Authority. Heretofore, the amount of the right was to that proportion of all water supplied by the Authority that the money paid to the Authority by a member agency for all purposes, except payment for water, bore to all money so paid by all member agencies.

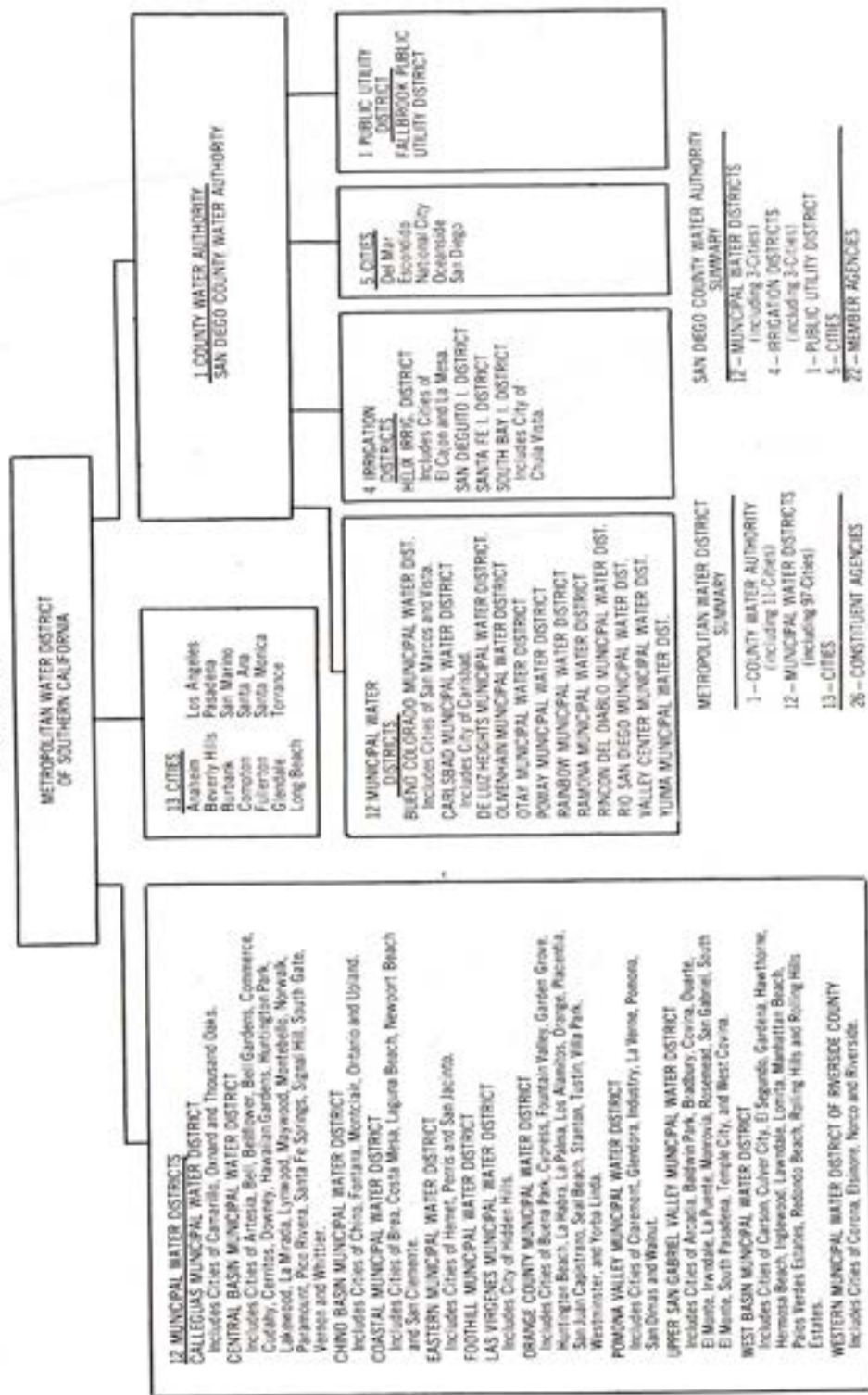
The new provision eliminated the exception "money paid for water" and substituted as an exception "operation expense only." The bill also changed the formula for determining the number of directors to which each member agency is entitled by authorizing a director for each \$115,000,000 of assessed valuation rather than for each \$100,000,000, and changed the date a member agency may elect to pay in cash the annual tax levy from August 25 to December 15.

Anti-Trust Suits

Anit-trust suits filed by many public agencies, including the Authority, against Southern California manufacturers of water pipe, charging the pipe suppliers with a conspiracy to fix prices on public bidding, were settled with all but one supplier. The Authority received a total of \$1,320,165. Still pending at the end of the fiscal year was the action filed against the American Pipe and Construction Company.

COMPOSITION OF THE METROPOLITAN WATER DISTRICT OF SOUTHERN CALIFORNIA

JUNE 30, 1968



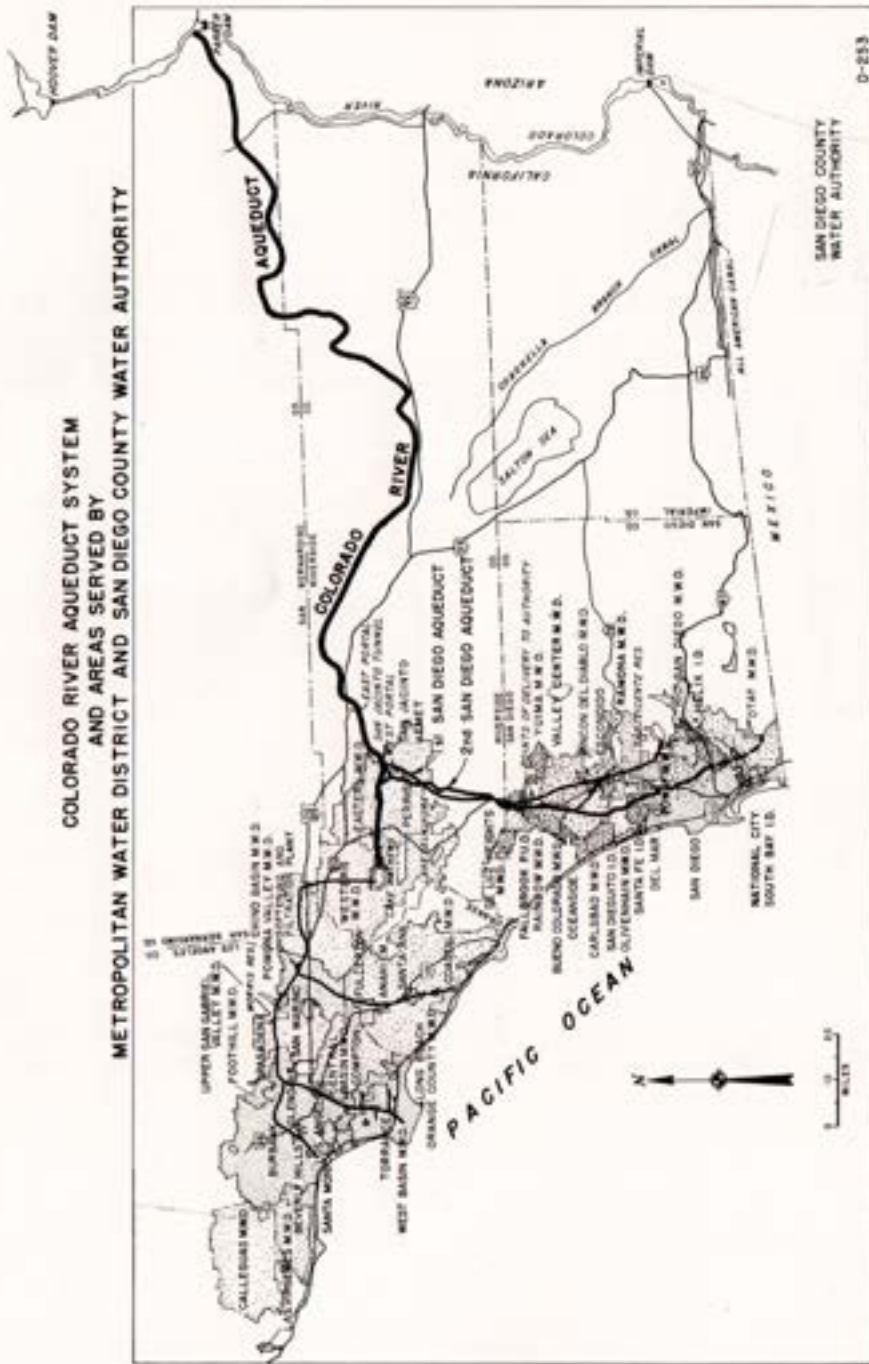


Figure E. Water Systems of Metropolitan Water District and San Diego County Water Authority

MEMBERSHIP IN THE METROPOLITAN WATER DISTRICT OF SOUTHERN CALIFORNIA

The Authority receives its entire supply of water from The Metropolitan Water District of Southern California and works very closely with that District. A brief outline of the District's organization and operations may be of interest to readers of this report.

The Metropolitan Water District was organized in 1928 under the then newly-enacted Metropolitan Water District Act. The Act originally permitted annexation of cities only. Later, the Metropolitan Act was amended to allow inclusion of districts. The Metropolitan and Authority Acts are quite similar.

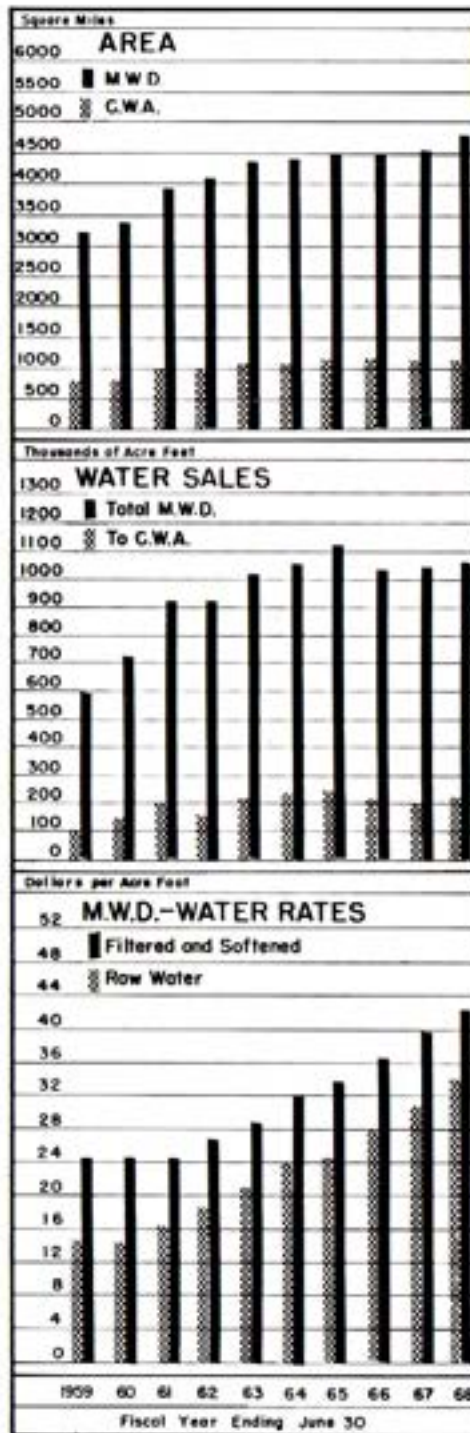
The District is governed by a Board of Directors. Each director represents a constituent member agency. A member agency is entitled to one director on the Metropolitan Board of Directors plus one additional director for each \$500 million of assessed valuation. Some agencies have a large number of directors serving on the District Board while other agencies have but one. As shown on Figure D, the District is comprised of 26 member agencies.

As of June 30, 1968, the Authority had three representatives serving on the District Board of Directors. Mr. Fred A. Heilbron, Chairman of the Authority Board of Directors, serves as Secretary of the Metropolitan Water District Board of Directors, having held this office since 1951. He is also a member of the Executive Committee, the Engineering and Operations Committee, and the Water Problems Committee. Mr. Hans H. Doe, Secretary of the Authority Board of Directors, is a member of the Operations and Personnel Committee and the Lands and Rights of Way Committee. He has served on the Board of Metropolitan for the past eight years. Mr. Harry Griffen, Authority Treasurer, was appointed to the District Board in January of 1963. Director Griffen is a member of the Finance and Insurance Committee and the Lands and Rights of Way Committee.

As of June 30, 1968 the Authority had a total of 212 votes out of 2,277 or 9.34 percent of the total. When Board action is taken, the votes of an agency are cast as a unit in accordance with the majority vote of that agency's representative present.

Constituent Member Agencies and Area

As shown on Figure D, the District is comprised of 26 member agencies, consisting of 13 original cities, one county water authority, and 12 municipal water districts. Portions of Ventura, Los Angeles, Orange, Riverside, San Bernardino, and San Diego Counties are served water by the Metropolitan Water District. Within these districts there is a total of 121 incorporated cities. During the year, 160,464 acres were annexed to the District, of which 14,823 acres were also annexed to the Authority. As of June 30, 1968, District



are equaled 4,784 square miles (3,061,885 acres), of which 1,165 square miles (745,755 acres) or 24.4 percent lie within the boundaries of the Water Authority.

Assessed Valuation

Total assessed valuation of taxable property lying within the boundaries of the District as determined by the assessors of the several counties for use in levying taxes for fiscal year 1967-68 is \$22,732,157,500, an increase of \$1,753,007,335 or 8.4 percent over the assessed valuation of \$20,979,150,165 for the 1966-67 fiscal year. An amount of \$195,732,410 or 11.2 percent of this increase occurred within the boundaries of the Authority.

Water Sales

A total of 1,076,914 acre feet of water was delivered by the District during fiscal year 1967-68. Of this amount, a total of 226,737 acre feet or 21.1 percent was delivered to the Authority. All water delivered to the Authority is untreated Colorado River water. The District operates a filtration and softening plant at La Verne, California, with a capacity of 400 million gallons per day and the recently completed Robert B. Diemer Filtration Plant in Orange County, which has a capacity of 200 million gallons per day. Construction now underway will double the Diemer plant capacity. The Authority cannot be served from either of these plants.

Tax Rate

The District maintained its tax rate of 14¢/\$100 of assessed valuation for 1967-68. In 1946 when the Authority annexed to the District, the tax rate was 50¢/\$100. During the past 20 years, progressive reductions in the tax rate have totaled 36 cents.

The tax rate for each year of operation is shown in Table 17. The total District tax levy including regular and special taxes in 1967-68 was approximately \$40,386,958, of which \$3,565,214 or 8.8 percent was levied against taxable property within the boundaries of the Authority. When the annexation fee is not paid in full in cash at the time of annexation, the Metropolitan Water District, by agreement, levies a special tax each year for 30 years to yield the total agreed upon annexation fee in substantially equal installments. As of June 30, 1968, member agencies of the Authority had assumed back-tax liability totaling \$26,227,129 of which a total of \$12,176,482 had been paid by June 30, 1968.

INDEX OF TABLES

	Table	Page
	No.	
APPENDIX A - STATISTICAL TABLES		
Agricultural Use of Water - Fiscal Year 1967-68	10	52
Allocation of Right to Purchase Authority Water	13	55
Analysis of Colorado River Aqueduct Water	16	58
Area - Authority Member Agencies	1	42
Assessed Valuations - Authority Member Agencies and County	4	45
Assessed Valuations and Tax Rates of the Metropolitan Water District	17	59
Authority Storage in San Vicente Reservoir	11	53
Chemical Character of Natural Colorado River Water ...	12	54
Population - Authority Member Agencies and County ...	3	44
Population Growth - County and Authority Area	2	43
Sales of Colorado River Water - Fiscal Year 1967-68 ...	5	46
Unit Water Production - Per Acre and Per Capita 1967-68	9	51
Water Production - Metropolitan Water District Con- stituent Areas	15	57
Water Production of Authority Agencies - Fiscal Year 1967-68	8	50
Water Production of Authority Agencies: Fiscal Years 1958-59 to 1967-68	7	49
Water Sales - 1947-68	6	48
Water Sales by Metropolitan Water District	14	56
APPENDIX B - FINANCIAL REPORT		
Annexation Charges, Assessments and Balances		87
Appropriations and Expenditures		72
Assessed Valuations and Tax Rates		83
Auditor's Report		61
Balance Sheet		62
Bonds Payable		76
Changes in Reserves and Fund Balances		64
Comments		80
Insurance Coverage		86
Investments		75
Legal Debt Margin		85
Letter of Transmittal		60
Metropolitan Water District Annexation Charges, Assessments and Balances on Authority Areas		88
Notes to Financial Statements		67
Operating Expense		70
Property, Plant and Equipment		78
Revenue		71
Revenue and Expense		66
Summary of Cash Receipts and Disbursements		74
Tax Assessments and Tax Collections		82
Tax Levies and Tax Collections		84

SAN DIEGO COUNTY WATER AUTHORITY

Table 1

AREA - AUTHORITY MEMBER AGENCIES

Member Agencies	Area Within Authority			Percent of Total Authority Area 6-30-68
	As of 6-30-67	Changes During Year	As of 6-30-68	
	acres	acres	acres	
Bueno Colorado M.W.D.	48,974	(1) - 4	(2) 48,970	6.57
In City of San Marcos	(8,101)	(0)	(8,101)	(1.09)
In City of Vista	(7,509)	(0)	(7,509)	(1.01)
Carlsbad M.W.D.	20,236	0	(3) 20,236	2.71
In City of Carlsbad	(7,131)	(+ 38)	(7,169)	(0.96)
Del Mar, City of	1,082	0	1,082	0.15
De Luz Heights M.W.D.	10,280	0	10,280	1.38
Escondido, City of	8,722	+ 440	9,162	1.23
Fallbrook Public Utility District ..	15,470	0	15,470	2.07
Helix Irrigation District	31,187	+ 41	(4) 31,228	4.19
In City of El Cajon	(7,231)	(+ 308)	(7,539)	(1.01)
In City of La Mesa	(4,919)	(+ 8)	(4,927)	(0.66)
National City, City of	5,258	0	5,258	0.70
Oceanside, City of	22,014	+ 294	22,308	3.00
Oliverahn M.W.D.	27,162	+ 300	(5) 27,522	3.69
Otay M.W.D.	64,564	0	(6) 64,564	8.66
Poway M.W.D.	22,980	0	22,980	3.08
Rainbow M.W.D.	39,114	+8,630	47,744	6.40
Ramona M.W.D.	41,365	+2,472	43,837	5.88
Rincon del Diablo M.W.D.	20,855	(1) - 423	(7) 20,432	2.74
Rio San Diego M.W.D.	54,105	- 41	54,064	7.25
San Diego, City of	194,729	+ 3	194,732	26.11
San Dieguito Irrigation District ...	4,926	0	4,926	0.66
Santa Fe Irrigation District	10,181	0	(8) 10,181	1.37
South Bay Irrigation District	15,818	0	(9) 15,818	2.12
In City of Chula Vista	(9,711)	(+ 74)	(9,785)	(1.31)
Valley Center M.W.D.	59,510	+2,609	62,119	8.33
Yuma M.W.D.	12,400	+ 351	12,751	1.71
Total Authority Area	730,932	+14,823	745,755	100.00
San Diego County			2,725,100	

- (1) Includes area annexed by an adjacent city member agency but still in district, being an overlapping area and considered here as being part of the city.
- (2) Does not include 2,612 acres overlapping in City of Oceanside and 294 acres overlapping in City of Escondido.
- (3) Does not include 602 acres overlapping in City of Oceanside.
- (4) Does not include 3 acres overlapping in City of San Diego.
- (5) Does not include 5 acres overlapping in City of San Diego.
- (6) Does not include 47 acres overlapping in City of San Diego.
- (7) Does not include 5,757 acres overlapping in City of Escondido and 1 acre overlapping in City of San Diego.
- (8) Does not include 3 acres overlapping in City of San Diego.
- (9) Does not include 217 acres overlapping in City of San Diego and 476 acres overlapping in City of National City.

TABLES

Table 2

POPULATION GROWTH - COUNTY AND AUTHORITY AREA

1910 to 1968

(Includes Resident Military Personnel)

Year (as of April 1)	COUNTY		AUTHORITY		Percent of County Population in Authority
	Total Population (1)	Average Annual Growth	Total Population	Average Annual Growth	
1910 . . .	61,865				
		5,058			
1920 . . .	112,248				
		9,741			
1930 . . .	209,659				
		7,969			
1940 . . .	289,348				
1946 . . . (3)	502,804	26,746	(3) 440,659		88
				2,807	
1950 . . .	556,808		(2) 451,886		81
				50,451	
1960 . . .	1,003,520		(2) 866,400		86
				59,100	
1961 . . . (4)	1,111,600		(5) 1,015,500		91
				69,500	
1962 . . . (4)	1,167,700		(5) 1,086,000		93
				5,200	
1963 . . . (4)	1,164,100		(5) 1,090,200		94
				34,800	
1964 . . . (4)	1,177,700		(5) 1,125,000		96
				25,000	
1965 . . . (4)	1,194,000		(5) 1,150,000		96
				25,000	
1966 . . . (4)	1,250,000		(5) 1,175,000		94
				15,000	
1967 . . . (4)	1,287,000		(5) 1,190,000		92
				39,000	
1968 . . . (4)	1,315,000		(5) 1,220,000		93

- (1) County population from U.S. Census Bureau Reports.
- (2) Authority population based on U.S. Census Bureau Reports.
- (3) Based on Special Census, U.S. Census Bureau, exclusive of emergency military personnel due to World War II.
- (4) Estimated by San Diego Chamber of Commerce.
- (5) Estimated by Authority member agencies.

SAN DIEGO COUNTY WATER AUTHORITY

Table 3
POPULATION - AUTHORITY MEMBER AGENCIES AND COUNTY
(Includes Resident Military Personnel)

Member Agencies	Population - U. S. Census				Annual Increase 1960-1968		Density of Population 1968 Per Sq. Mile.
	Area 6/30/68	1960	Decade Increase 1960-60	1968 Estimate	Percent	Per Acre	
	Acres	(1)	Percent	(2)	Percent	Acres	
Bueno Colorado M. W. D.	48,970	31,500	---	36,500	2	0.75	477
In City of San Marcos	(8,101)	---	---	(9,400)	---	0.42	269
In City of Vista	(7,509)	---	---	(22,500)	---	3.00	1,918
Carlsbad M. W. D.	20,236	10,000	---	13,000	5	0.67	430
In City of Carlsbad	(7,169)	(9,400)	---	(13,050)	6	1.89	1,210
Del Mar, City of	1,082	---	---	4,000	---	3.70	2,366
De Luz Heights M. W. D.	10,280	---	---	100	---	0.01	6
Escondido, City of	9,162	18,000	150	31,800	9	3.47	2,221
Fallbrook Public Utility District	15,470	10,000	82	11,000	2	0.74	476
Helix Irrigation District	31,228	122,100	176	154,800	3	4.96	3,173
In City of El Cajon	(7,539)	(37,300)	546	(49,000)	4	6.50	4,160
In City of La Mesa	(9,927)	(29,900)	173	(36,000)	3	7.71	4,936
National City, City of	5,258	32,300	52	37,000	2	7.04	4,504
Oceanside, City of	22,408	24,700	92	40,000	8	1.79	1,142
Olivehain M. W. D.	27,522	200	---	650	23	0.02	15
Osay M. W. D.	64,564	5,400	---	16,000	25	0.23	139
Poway M. W. D.	22,980	4,800	---	9,800	13	0.43	273
Rainbow M. W. D.	47,744	2,500	---	3,800	4	0.08	51
Ramona M. W. D.	43,837	5,600	---	6,100	1	0.14	89
Rincon del Diablo M. W. D.	20,432	14,000	---	17,800	3	0.87	538
Rio San Diego M. W. D.	34,064	25,000	---	39,000	7	0.73	469
San Diego, City of	194,732	557,200	67	680,500	3	3.50	2,237
San Diego Irrigation District	4,926	15,000	141	21,200	5	4.30	2,754
Santa Fe Irrigation District	10,181	7,700	157	9,050	3	0.93	607
South Bay Irrigation District	15,818	64,300	122	78,400	3	4.96	3,172
In City of Chula Vista	(9,785)	(42,400)	166	(60,000)	5	6.13	3,934
Valley Center M. W. D.	62,110	3,500	---	6,000	8	0.10	62
Yuima M. W. D.	12,751	---	---	1,200	---	0.09	60
Total Authority	745,755	*935,200	*106	1,220,000	3	1.64	1,047
San Diego County	2,725,100	1,003,320	80	1,315,000	4	0.48	309

(1) Population in agencies other than cities was furnished by agencies. (2) Estimated by agencies. *Revised from 1967 Report.

TABLES

Table 4
ASSESSED VALUATIONS - AUTHORITY MEMBER AGENCIES AND COUNTY

Member Agencies	Assessed Valuation - Secured and Unsecured 1968-69				Total	Per Acre
	Area 6/30/68	1965-67	1967-68	Percent Increase		
	Acres	Total	Total	Percent Increase		
Bueno Colorado M. W. D.	48,970	\$ 66,993,470	\$ 75,449,450	9.4	\$ 83,663,720	\$ 1,708
Carlsbad M. W. D.	20,236	47,810,060	51,514,860	7.7	56,285,830	2,781
Del Mar, City of	1,082	11,219,260	12,333,070	9.9	12,749,380	11,783
De Luz Heights M. W. D.	10,280	---	(538,150)*	---	1,057,440	103
Escondido, City of	9,162	44,682,580	49,923,490	11.7	63,387,520	6,919
Fallbrook Public Utility District	15,470	17,531,960	17,961,470	2.4	19,869,780	1,284
Helix Irrigation District	31,228	221,665,770	240,871,210	8.7	265,910,850	8,190
National City, City of	5,258	43,040,280	43,552,030	1.2	45,782,760	8,707
Oceanside, City of	22,408	60,503,310	65,843,450	8.8	69,298,210	3,093
Olivehain M. W. D.	27,522	9,787,670	11,799,030	20.5	15,252,980	554
Osay M. W. D.	64,564	31,835,120	35,736,090	12.3	36,823,440	570
Poway M. W. D.	22,980	16,635,700	18,094,850	8.7	20,177,650	878
Rainbow M. W. D.	47,744	21,347,510	22,394,460	4.9	22,934,220	480
Ramona M. W. D.	43,837	9,260,910	11,029,740	19.1	11,443,490	261
Rincon del Diablo M. W. D.	20,432	24,953,280	27,946,800	12.0	33,510,530	1,640
Rio San Diego M. W. D.	34,064	42,743,660	46,870,440	9.7	50,956,550	943
San Diego, City of	194,732	1,058,739,530	1,152,876,240	8.9	1,220,424,800	6,267
San Diego Irrigation District	4,926	27,361,920	29,827,230	9.0	33,265,030	6,753
Santa Fe Irrigation District	10,181	25,681,150	28,830,640	12.3	32,148,480	3,158
South Bay Irrigation District	15,818	130,560,590	152,866,070	17.1	168,240,360	10,626
Valley Center M. W. D.	62,110	10,147,650	21,997,070	116.8	23,330,360	376
Yuima M. W. D.	12,751	2,730,460	5,288,790	93.7	5,590,980	438
Total Authority	745,755	\$ 1,927,254,740	\$ 2,122,967,150	10.2	\$ 2,232,094,360	\$ 3,060
San Diego County	(1) 1,250,000	\$ 2,039,339,560	\$ 2,262,017,710	10.9	\$ 2,445,189,720	\$ 1,956

(1) Excluding 1,475,100 acres of tax-exempt lands in San Diego County.
* Not on Authority tax roll.

SAN DIEGO COUNTY WATER AUTHORITY

Table 5
SALES OF COLORADO RIVER WATER - FISCAL YEAR 1967-68

(All Figures in Acre Feet)

Member Agencies	July	August	Sept.	Oct.	Nov.	Dec.	Total 6 Months
Buena Colorado M.W.D.	659.5	892.6	825.2	762.0	656.4	160.6	3,947.3
Carlshai M.W.D.	794.8	892.9	719.1	685.1	509.8	181.3	3,783.0
Del Mar, City of	79.5	91.2	79.3	67.6	46.9	46.7	411.2
De Luz Heights M.W.D.	0	0	0	0	0	0	0
Escondido, City of	421.2	533.0	385.6	328.9	268.0	169.5	2,106.2
Fallbrook P.U.D.	1,368.0	1,497.8	1,311.8	1,318.3	753.0	168.0	6,416.9
Belix I.D.	2,557.2	2,462.6	1,651.5	1,829.0	2,144.1	902.9	11,547.3
National City & South Bay I.D..	524.1	671.5	938.8	979.7	947.9	654.8	4,716.8
Oceanside, City of	1,014.0	1,009.6	875.4	815.5	596.1	382.3	4,692.9
Olivenhain M.W.D.	164.3	146.0	116.8	105.5	55.9	19.7	698.2
Otay M.W.D.	1,294.2	1,362.2	1,391.2	1,305.0	798.8	179.7	6,241.1
Poway M.W.D.	540.7	552.8	449.5	427.5	342.5	79.4	2,292.4
Rainbow M.W.D.	1,770.6	1,976.1	1,818.9	1,813.5	1,092.0	80.6	8,461.7
Ramona M.W.D.	119.0	142.6	111.2	119.1	76.7	40.9	609.5
Rincon del Diablo M.W.D.	294.8	287.3	285.9	257.3	196.3	65.6	1,387.2
Rio San Diego M.W.D.	660.1	674.5	645.9	564.1	385.7	239.1	3,169.4
San Diego, City of	12,002.0	11,483.8	9,887.8	10,821.1	4,725.6	2,825.7	51,748.0
San Dieguito I.D.	0	388.9	534.7	110.6	19.9	0	1,054.1
Santa Fe I.D.	0	388.9	534.7	110.6	20.0	0	1,054.2
Valley Center M.W.D.	1,426.2	1,464.9	1,238.1	1,208.2	644.6	65.6	6,047.6
Yuma M.W.D.	235.1	323.7	294.2	277.3	150.3	3.7	1,284.3
Total Sales to Agencies	25,916.3	27,242.9	24,095.6	23,905.9	14,152.0	6,267.3	121,585.8
Total Sales to Others	1.1	1.5	1.8	1.4	1.5	1.2	8.5
Total Sales to Agencies and Others	25,917.4	27,244.4	24,097.4	23,907.3	14,153.5	6,268.5	121,594.3
Total to Authority Storage	0	+ 21.1	+ 0.7	0	0	0	+ 21.8
Total from Authority Storage ..	- 396.8	- 552.7	-1,609.3	-4,084.8	-1,649.6	-146.2	- 8,439.4
Total to Metropolitan Storage ..	0	0	0	+3,424.5	+7,739.7	+1,894.0	+13,058.8
Total from Metropolitan Storage	-4,000.0	-4,000.0	-1,879.5	0	0	0	- 9,879.5
Total Flow in Authority System	21,520.6	22,712.8	20,609.3	23,247.0	20,242.1	8,015.7	116,347.5
Rate of Flow (c. f. s.)							
To Agencies and Others ...	421.5	443.1	405.0	388.8	257.8	102.0	333.1
To Authority Storage	0	+ 0.3	0	0	0	0	+ 0.1
From Authority Storage ...	- 6.4	- 9.0	- 27.0	- 66.4	- 27.7	- 2.4	- 23.1
To Metropolitan Storage ...	0	0	0	+ 55.7	+ 130.1	+ 30.8	+ 35.8
From Metropolitan Storage ..	- 65.1	- 65.0	- 31.6	0	0	0	- 27.1
Flow in Authority System ...	350.0	369.4	346.4	378.1	340.2	130.4	318.8

TABLES

Table 5
(Continued)

Jan.	Feb.	March	April	May	June	Total 6 Months	Yearly Total	Yearly Average c. f. s.
237.4	142.8	563.7	990.9	1,230.5	1,212.2	4,377.5	8,324.8	11.5
221.8	337.0	450.8	616.9	826.1	761.5	3,213.2	6,996.2	9.7
43.0	43.3	44.8	65.6	67.4	92.1	356.2	767.4	1.1
0	0	0	0	0	0	0	0	0
226.5	230.1	293.9	353.2	451.0	473.6	2,028.3	4,134.5	5.7
479.1	434.3	519.8	811.2	1,096.8	1,272.5	4,613.7	11,030.6	15.2
1,578.1	1,360.1	2,030.4	2,376.4	2,897.4	3,410.0	13,652.4	25,199.7	34.7
869.0	923.9	1,325.9	1,374.3	1,426.4	1,376.6	7,296.1	12,012.9	16.6
500.2	444.5	567.1	684.0	839.2	867.8	3,902.8	8,506.7	11.8
51.0	26.1	21.2	116.6	114.3	173.7	503.9	1,111.1	1.5
313.5	240.5	365.6	482.3	749.2	923.4	3,074.5	9,315.6	12.8
161.7	151.4	222.9	306.1	365.0	457.0	1,664.1	3,956.5	5.5
578.4	499.4	692.0	1,024.9	1,515.5	1,763.0	6,073.2	14,534.9	20.0
55.8	57.0	67.6	93.3	120.5	168.1	562.3	1,171.8	1.6
308.7	322.0	432.6	577.1	914.2	879.2	3,422.8	4,810.0	6.6
288.8	257.2	363.5	454.7	569.7	652.1	2,586.0	5,755.4	7.9
2,590.0	2,905.2	5,616.6	11,151.0	13,458.9	12,349.7	48,071.4	98,817.4	137.5
0	0	0	60.2	239.6	335.2	635.0	1,689.1	2.3
0	0	0	60.2	239.6	335.2	635.0	1,689.2	2.3
292.2	187.0	420.5	751.4	1,169.6	1,563.8	4,324.5	10,372.1	14.3
16.8	16.1	60.1	109.2	193.0	365.5	700.7	1,985.0	2.7
8,810.0	8,577.9	14,069.0	22,458.6	28,483.9	29,303.2	111,602.6	233,269.9	321.3
1.3	1.2	1.6	1.4	1.9	1.8	9.2	17.7	0.1
8,811.3	8,579.1	14,060.6	22,460.0	28,485.8	29,305.0	111,701.8	233,287.6	321.4
0	0	+ 300.0	+ 400.0	-1,240.0	+ 500.0	+ 2,440.0	+ 2,461.8	+ 3.4
- 292.2	- 187.0	0	0	0	0	- 479.2	- 8,918.6	-12.3
+1,340.7	+4,918.1	+ 967.7	0	0	0	+ 7,216.5	+20,275.3	+27.9
0	0	0	-3,600.0	-3,000.0	-3,000.0	- 9,600.0	-18,879.5	-26.0
9,859.8	13,310.2	15,318.3	19,860.0	28,725.8	26,805.0	111,879.1	228,226.6	314.4
143.3	149.2	228.6	377.5	463.3	492.5	309.4	321.4	
0	0	+ 4.9	+ 6.7	+ 20.2	+ 8.4	+ 6.7	+ 3.4	
- 4.8	- 3.3	0	0	0	0	- 1.3	- 12.3	
+ 21.8	+ 85.5	+ 15.6	0	0	0	+ 20.0	+ 27.9	
0	0	0	- 50.4	- 48.8	- 50.4	- 24.9	- 26.0	
160.3	231.4	249.1	333.8	434.7	459.5	309.9	314.4	

SAN DIEGO COUNTY WATER AUTHORITY

TABLES

Table 6
WATER SALES - 1947 to 1968
(All figures in acre feet)

Member Agencies	1947-60	1960-61	1961-62	1962-63	1963-64	1964-65	1965-66	1966-67	1967-68	Totals
Bueno Colorado M. W. D.	25,453	10,143	9,334	9,738	9,356	16,096	11,977	9,623	8,335	163,456
Carlsbad M. W. D.	12,734	5,421	5,632	7,196	6,292	6,217	6,153	6,222	6,596	62,973
Del Mar, City of	178	652	787	1,597
De Luz Heights M. W. D.	0
Escondido, City of	11,631	2,757	2,436	2,623	2,833	3,112	3,157	3,276	4,134	35,973
Fallbrook Public Utility District	64,705	10,352	6,876	18,228	10,517	16,569	10,764	9,844	11,031	146,901
Helix Irrigation District	124,104	23,754	22,324	27,398	24,088	26,236	25,965	18,844	25,000	319,532
National City & South Bay I.D.	203,278	12,619	11,917	12,863	12,076	12,597	9,997	8,548	12,013	197,910
Oceanside, City of	21,645	3,923	3,788	4,442	6,397	7,276	7,396	7,543	8,596	70,976
Oliverehain M. W. D.	12	250	570	791	814	910	803	1,111	3,141
Otay M. W. D.	840	1,120	1,749	5,332	5,058	6,045	6,679	8,268	9,318	44,357
Poway M. W. D.	6,107	2,206	2,069	2,508	2,754	3,196	3,317	3,423	3,967	29,476
Rainbow M. W. D.	22,683	7,615	7,458	9,503	11,197	11,929	13,929	12,724	14,526	111,226
Ranoma M. W. D.	520	469	517	651	729	763	895	860	1,172	6,666
Rincon del Diablo M. W. D.	21,981	7,969	6,137	7,583	9,445	9,314	7,956	4,849	4,810	79,161
Rio San Diego M. W. D.	6,988	2,935	2,689	3,575	3,479	4,985	4,593	4,492	5,752	28,109
San Diego, City of	732,843	89,223	87,481	104,601	116,100	105,814	86,575	87,550	99,817	1,510,104
San Diego Irrigation District	16,957	3,544	2,817	3,906	2,826	2,724	2,310	2,481	1,688	31,470
Santa Fe Irrigation District	8,176	3,255	2,537	2,660	2,509	2,310	2,481	2,481	1,688	28,129
Valley Center M. W. D.	3,495	2,124	2,170	2,902	3,432	3,351	7,233	7,876	16,372	44,535
Yuma M. W. D.	220	1,703	2,165	1,945	6,673
Total Sales to Agencies	1,176,638	188,046	180,361	217,971	229,811	230,857	212,889	202,032	233,279	2,474,295
Total Sales to Others	796	115	106	76	63	54	73	32	18	1,335
Total to Authority Storage	+ 77,143	+18,968	+ 7,972	- 8,365	+ 3,540	+ 9,794	+ 7,914	- 4,372	- 2,462	+ 182,050
Total from Authority Storage	- 71,896	- 972	- 3,601	- 3,342	- 1,467	- 26	- 9,728	- 3,742	- 8,919	- 105,453
Total from Metropolitan Storage	+25,326	-17,178	-20,275	+ 62,779
Total from Metropolitan Storage	-17,561	-14,979	-18,979	+ 59,340
Total Flow in Authority System	1,184,431	198,257	186,858	220,472	231,947	240,679	218,913	206,273	228,227	2,914,306
Rate of Flow (c.f.s.)	To Agencies and Others ...	129.2	260.6	249.3	260.4	316.6	319.0	279.8	321.4	192.7
To Authority Storage	+ 8.4	+ 14.4	+ 11.0	+ 11.5	+ 4.9	+ 13.5	+ 10.8	- 6.0	- 3.4	+ 8.9
From Authority Storage	- 7.9	- 1.3	- 5.0	- 7.4	- 2.6	- 0.1	- 13.4	- 5.2	- 12.3	- 7.1
To Metropolitan Storage	- 20.0	- 23.7	- 27.9	+ 4.2
Flow in Authority System	129.8	272.9	255.3	304.5	319.5	332.4	302.2	284.9	314.4	195.3

(1) The operation of the first Aqueduct was formally initiated on November 27, 1947. For sales in intervening years see previous reports.

Table 7
WATER PRODUCTION WITHIN AUTHORITY AGENCIES - FISCAL YEARS 1958-59 to 1967-68

Member Agencies	(All Figures in Acre Feet)									
	1958-59	1959-60	1960-61	1961-62	1962-63	1963-64	1964-65	1965-66	1966-67	1967-68
Bueno Colorado M. W. D.	13,609	13,116	14,096	11,937	13,763	12,743	13,022	12,616	12,531	14,430
Carlsbad M. W. D.	3,923	4,890	7,091	6,711	7,283	6,412	6,295	6,347	6,359	6,944
Del Mar, City of	(a)	(a)	(a)	597	664*	691	629	650	652	737
De Luz Heights M. W. D.	(a)	(a)	(a)	(a)	(a)	(a)	(a)	(a)	(a)	(a)
Escondido, City of	2,813	2,694	3,136	3,211	3,628	3,553	4,275	4,356	4,352	5,559
Fallbrook Public Utility District	10,018	9,130	16,724	8,969	16,379	16,712	16,716	11,918	9,872	11,020
Helix Irrigation District	21,595	21,629	21,928	23,501	22,943	22,943	25,069	26,036	25,672	28,778
National City and South Bay I.D.	14,597	13,259	14,148	13,529	14,219	14,021	14,143	14,614	14,391	15,763
Oceanside, City of	5,107	5,081	5,374	5,039	5,795	6,664	7,424	7,447	7,607	8,068
Oliverehain M. W. D.	(a)	(a)	12*	145	570	620	717	810	903	1,111
Otay M. W. D.	146	479	507	1,460	3,381	3,069	6,045	6,679	8,268	9,316
Poway M. W. D.	1,310	1,567	2,203	2,069	2,586	2,754	3,196	3,317	3,423	3,967
Rainbow M. W. D.	6,576	6,148	8,771	8,533	10,460	11,431	12,629	14,140	13,123	15,319
Ranoma M. W. D.	351	329	541	643	744	825	859	1,013	1,039	1,277
Rincon del Diablo M. W. D.	11,753	10,339	11,692	9,832	11,847	12,106	11,945	12,613	11,707	12,813
Rio San Diego M. W. D.	2,311	2,686	3,526	3,329	3,925	3,926	4,356	4,368	4,888	5,810
San Diego, City of	80,060	60,796	64,345	61,156	69,426	62,451	65,032	102,174	163,694	132,841
Outside City (not in Authority)	3,538	4,178	4,840	3,907	4,275	4,438	4,922	5,236	5,432	6,780
San Diego Irrigation District	4,247	3,757	4,212	3,668	3,947	4,057	3,920	4,022	4,022	4,229
Santa Fe Irrigation District	3,863	3,927	3,343	3,706	3,508	3,725	3,968	3,968	3,823	5,544
Valley Center M. W. D.	776	1,358	2,124	2,170	2,902	3,432	3,331	7,230	7,076	16,322
Yuma M. W. D.	(a)	(a)	(a)	(a)	(a)	8,623	9,242*	9,142	6,070	7,929
Total	187,429	186,115	206,540	182,554	219,280	231,545	243,893	238,729	259,944	286,370

*Use of Colorado River water began this year. All other agencies' use began prior to 1955-56. See previous reports.

(a) Not available.

SAN DIEGO COUNTY WATER AUTHORITY

TABLES

Table 8
WATER PRODUCTION OF AUTHORITY AGENCIES - FISCAL YEAR 1967-68

Member Agencies	TOTAL WATER PRODUCTION				SOURCE OF WATER			
	as m.g.d.	as c.f.a.	as ac.ft./yr.	as ac.ft.	Local Supply	Authority Supply	Percent	Percent
					Amount	Amount	Percent	Percent
Buena Colorado M. W. D.	12.32	19.84	14,399.6	5,999.3	41.7	8,400.3	58.3	41.7
Carlbad M. W. D.	6.18	9.56	6,943.7	0	0	6,943.7	100.0	0
Del Mar, City of	0.89	1.66	767.4	0	0	767.4	100.0	0
De Luz Heights M. W. D.	0	0	0	0	0	0	0	0
Eucorido, City of	4.97	7.69	5,589.5	1,439.0	25.8	4,141.5	74.2	25.8
Fallbrook Public Utility District	9.51	15.18	11,019.9	0	0	11,019.9	100.0	0
Helix Irrigation District	23.42	39.64	28,777.9	4,142.4	14.4	24,635.5	85.6	14.4
National City and South Bay I. D.	14.05	21.74	15,785.0	4,736.0	30.0	11,049.0	70.0	30.0
Oceanside, City of	7.74	11.97	8,684.3	32.7	0.6	8,651.6	99.4	0.6
Olivenhain M. W. D.	0.99	1.53	1,111.1	0	0	1,111.1	100.0	0
Olway M. W. D.	8.29	12.83	9,315.6	0	0	9,315.6	100.0	0
Poway M. W. D.	3.52	5.45	3,956.5	0	0	3,956.5	100.0	0
Rainbow M. W. D.	13.64	21.10	15,313.9	817.5	5.3	14,496.4	94.7	5.3
Ranoma M. W. D.	1.14	1.76	1,276.7	104.9	8.2	1,171.8	91.8	8.2
Rincon del Diabolo M. W. D.	11.41	17.65	12,813.3	8,053.3	62.5	4,760.0	37.5	62.5
Rio San Diego M. W. D.	5.17	8.60	9,819.3	54.9	0.9	9,764.4	99.1	0.9
San Diego, City of:								
Inside City	106.46	155.44	112,841.3	16,772.6	14.9	96,068.7	85.1	14.9
Outside City (Not in Authority)	3.15	7.36	9,779.6	5,779.6	100.0	0	0	0
San Diego Irrigation District	3.85	5.96	4,329.2	2,822.5	67.5	1,486.7	32.5	67.5
Santa Fe Irrigation District	4.76	7.36	9,343.5	3,371.9	36.1	1,971.6	36.9	36.1
Valley Center M. W. D.	9.23	14.29	19,372.1	0	0	19,372.1	100.0	0
Yuma M. W. D.	7.07	10.94	7,939.4	5,054.4	75.0	1,985.0	25.0	75.0
Total	256.56	396.96	388,169.8	60,131.0	20.9	228,038.8	79.1	20.9

Note: This table is a compilation of data furnished by member agencies.
Figures include losses in transmission and distribution systems but not in conservation reservoirs.

Table 9
UNIT WATER PRODUCTION - PER ACRE AND PER CAPITA 1967-68

Member Agencies	Gross Area (±) acres	Total Production of Water ac.ft.	Estimated Area Served by Water System acres	Water Production Per Area Served ac.ft./acre/yr.	Estimated Population	Water Production Per Capita ac.ft./cap./yr.
Buena Colorado M. W. D.	48,970	14,399.6	34,130	0.42	36,500	0.39
Carlbad M. W. D.	20,236	6,943.7	15,000	0.46	12,600	0.51
Del Mar, City of	1,092	767.4	1,080	0.71	4,000	0.19
De Luz Heights M. W. D.	10,280	0	0	0	100	0
Eucorido, City of	9,162	5,589.5	8,440	0.66	31,800	0.18
Fallbrook Public Utility District	15,470	11,019.9	7,700	1.43	11,500	0.96
Helix Irrigation District	31,228	28,777.9	28,650	1.01	154,800	0.19
National City, City of	5,258	4,255.0	3,870	1.10	37,800	0.12
Oceanside, City of	22,408	5,688.3	12,460	0.70	46,000	0.22
Olivenhain M. W. D.	27,522	1,111.1	9,000	0.12	650	1.71
Olway M. W. D.	64,564	9,315.6	27,500	0.34	16,000	0.58
Poway M. W. D.	32,980	3,956.5	6,600	0.60	9,800	0.40
Rainbow M. W. D.	47,744	15,313.9	8,500	1.80	3,800	4.03
Ranoma M. W. D.	43,837	1,276.7	6,600	0.19	6,100	0.21
Rincon del Diabolo M. W. D.	26,432	12,813.3	11,050	1.16	17,850	0.72
Rio San Diego M. W. D.	54,064	5,819.3	12,000	0.49	39,650	0.15
San Diego, City of	194,732	(1) 112,841.3	75,840	1.49	680,560	0.17
San Diego Irrigation District	4,326	4,329.2	4,226	1.03	21,200	0.29
Santa Fe Irrigation District	10,181	9,343.5	7,300	0.73	9,650	0.55
South Bay Irrigation District	15,818	11,540.0	8,836	1.17	19,400	0.15
Valley Center M. W. D.	62,110	19,372.1	18,360	0.61	6,000	1.73
Yuma M. W. D.	12,751	7,939.4	3,950	2.01	1,200	6.62
Total and Average	745,735	252,390.2	310,610	0.91	1,220,000	0.25

(1) Does not include production by City of San Diego for areas outside City (not in Authority).
(2) Does not include overlapping area as shown in Table 1.

SAN DIEGO COUNTY WATER AUTHORITY

Table 10
AGRICULTURAL USE OF WATER - FISCAL YEAR 1967-68

Member Agencies	Total Water Production ac. ft.	Water Used for Agricultural Purposes				Percent of Agricultural Water to Total Production	
		From Local Supply		From Authority			Total ac. ft.
		ac. ft.	Percent	ac. ft.	Percent		
Bueno Colorado M. W. D.	14,309.6	4,603.0	43.6	5,179.2	56.4	9,182.2	63.5
Carlsbad M. W. D.	6,943.7	0	0	4,446.2	100.0	4,446.2	64.0
Del Mar, City of	767.4	(b)	0	(b)	0	(b)	(b)
De Luz Heights M. W. D.	0	0	0	0	0	0	0
Escondido, City of	5,560.5	463.9	28.7	1,158.0	71.3	1,623.9	29.1
Fairbrook Public Utility District	11,019.9	0	0	9,120.6	100.0	9,120.6	52.8
Hells Irrigation District	28,777.9	1,634.0	20.0	6,540.2	80.0	8,174.2	28.4
National City & South Bay I. D.	15,785.0	213.8	30.4	494.8	69.6	710.6	4.5
Oceanside, City of	5,688.3	(a)	0	(b)	0	(a)	(a)
Olivenhain M. W. D.	1,111.1	0	0	1,014.4	100.0	1,014.4	91.3
Otay M. W. D.	9,315.6	0	0	6,139.2	100.0	6,139.2	65.9
Poway M. W. D.	3,956.5	0	0	2,337.5	100.0	2,337.5	59.1
Rainbow M. W. D.	15,318.9	790.9	5.3	14,006.5	94.7	14,797.4	96.6
Ramona M. W. D.	1,276.7	48.4	8.5	504.2	91.2	552.6	43.3
Rincon del Diabolo M. W. D.	12,813.3	5,870.2	64.1	3,294.5	35.9	9,170.7	71.6
Rio San Diego M. W. D.	3,810.3	4.7	2.0	232.1	98.0	236.8	4.1
San Diego, City of	112,841.3	1,016.5	18.5	4,394.6	81.2	5,411.4	4.8
San Dieguito Irrigation District	4,329.2	(b)	0	(b)	0	(b)	(b)
Seaca Fe Irrigation District	5,343.5	(b)	0	(b)	0	(b)	(b)
Valley Center M. W. D.	10,372.1	0	0	9,635.8	100.0	9,635.8	92.9
Yuima M. W. D.	7,939.4	5,844.4	75.7	1,575.8	24.3	7,420.2	97.2
Total	282,390.2	19,900.1	22.0	76,373.6	75.0	90,273.7	32.0

(a) No report was received from agency, assumed no agricultural use.
(b) Included in City of San Diego.

TABLES

Table 11
AUTHORITY STORAGE IN SAN VICENTE RESERVOIR
(Fiscal Year 1967-68)

Member Agencies	Total Quantity in Storage 7/1/67 ac. ft.	Placed into Storage During Fiscal Year ac. ft.	Withdrawn During Fiscal Year		Total Quantity in Storage 6/30/68 ac. ft.
			By Delivery ac. ft.	By Evaporation ac. ft.	
			ac. ft.	ac. ft.	
Bueno Colorado M. W. D.	1,708.5	80.0	949.5	56.2	782.8
Carlsbad M. W. D.	0	0	0	0	0
Del Mar, City of	0	0	0	0	0
De Luz Heights M. W. D.	0	0	0	0	0
Escondido, City of	423.1	0	0	25.2	397.9
Fairbrook Public Utility District	525.3	760.0	200.0	29.5	1,055.8
Hells Irrigation District	0	0	0	0	0
National City & South Bay I. D.	0	0	0	0	0
Oceanside, City of	669.8	0	0	39.9	629.9
Olivenhain M. W. D.	381.3	0	41.3	21.2	315.8
Otay M. W. D.	2,000.0	300.0	859.2	93.8	1,547.0
Poway M. W. D.	1,986.7	0	796.6	90.2	1,099.9
Rainbow M. W. D.	5,000.0	600.0	2,935.1	207.7	2,457.2
Ramona M. W. D.	300.0	0	60.0	15.8	224.2
Rincon del Diabolo M. W. D.	354.7	300.0	0	16.5	538.2
Rio San Diego M. W. D.	1,400.3	0	323.3	71.7	999.3
San Diego, City of	0	0	0	0	0
San Dieguito Irrigation District	0	0	0	0	0
Santa Fe Irrigation District	0	0	0	0	0
Valley Center M. W. D.	7,500.0	200.0	2,747.6	362.0	4,390.4
Yuima M. W. D.	422.7	0	0	25.1	397.6
Total	22,573.6	2,440.0	8,918.6	1,054.5	15,042.0

Table 12
 CHEMICAL CHARACTER OF NATURAL COLORADO RIVER WATER
 AT WEST PORTAL OF SAN JACINTO TUNNEL

Year Ending June 30, 1968

Samples Taken at Entrance to San Diego Aqueduct by M. W. D.
 and Analyzed by District Laboratory

Month	Total Hardness as P. P. M. CaCO ₃	Non Carbonate Hardness as P. P. M. CaCO ₃	Alkalinity as P. P. M. CaCO ₃		Magnesium as P. P. M. of Mg.	Hydrogen Ion Concentration	Temperature When Sampled °F
			Total	Phenolphthalein			
July.....	331	208	123	0	29.5	8.2	80
August.....	327	206	122	0	29.0	8.2	83
September.....	327	209	118	0	29.0	8.2	83
October.....	325	210	115	0	30.5	8.2	80
November.....	322	204	118	0	28.5	8.1	69
December.....	325	207	118	1	29.5	8.3	52
January.....	328	210	118	2	30.5	8.5	55
February.....	330	209	121	0	30.0	8.3	57
March.....	331	207	124	2	29.5	8.3	59
April.....	334	211	123	1	29.5	8.3	65
May.....	332	207	125	1	29.5	8.3	68
June.....	340	214	126	1	31.0	8.4	76
Average.....	329	208	121	1	29.7	8.3	69
Maximum.....	340	214	126	2	31.0	8.5	83
Minimum.....	322	204	115	0	28.5	8.1	52

Table 13
 ALLOCATION OF RIGHT TO PURCHASE AUTHORITY WATER

As of June 30, 1968

Member Agencies	Total Amount Paid by Each Member Agency to 6/30/68	Amount Remaining to be paid under Terms of Annexation	Total Contributions Paid and Contracted for	Allocation	
				Percentage of Authority Supply	Equivalent Flow c. f. s.
Bueno Colorado M. W. D.	\$ 739,323.16	\$ 0	\$ 739,323.16	2.90	13.10
Carlsbad M. W. D.	518,178.95	0	518,178.95	2.04	9.16
Del Mar, City of	125,204.26	63,583.18	188,787.44	0.74	3.33
De Luz Heights M. W. D.	500.00	6,900.00	7,400.00	0.03	0.13
Econduño, City of	444,901.20	0	444,901.20	1.75	7.87
Fallbrook Public Utility District	207,986.53	574.93	208,561.46	0.82	3.69
Helix Irrigation District	2,819,365.14	2,068.53	2,821,433.67	11.09	49.90
National City, City of	608,081.14	0	608,081.14	2.38	10.75
Oceanside, City of	647,228.58	0	647,228.58	2.54	11.42
Olivensahn M. W. D.	54,184.66	16,869.56	71,054.22	0.28	1.26
Otay M. W. D.	284,197.98	4,575.47	288,773.45	1.13	5.08
Poway M. W. D.	155,015.42	500.06	155,515.48	0.61	2.74
Rainbow M. W. D.	150,418.19	9,178.03	159,596.22	0.63	2.83
Razonna M. W. D.	132,730.31	6,730.63	140,460.94	0.55	2.48
Rincon del Diablo M. W. D.	369,307.71	0	369,307.71	1.45	6.52
Rio San Diego M. W. D.	488,121.65	19,611.74	507,733.39	2.00	9.00
San Diego, City of	15,238,423.61	0	15,238,423.61	59.88	269.46
San Dieguito Irrigation District	327,934.92	1,459.28	329,394.20	1.29	5.80
Santa Fe Irrigacion District	293,649.14	0	293,649.14	1.15	5.17
South Bay Irrigation District	1,523,375.64	0	1,523,375.64	5.99	26.85
Valley Center M. W. D.	122,181.78	4,995.26	127,177.04	0.50	2.25
Yulma M. W. D.	31,161.21	29,047.18	60,208.39	0.24	1.08
Total Authority	\$25,282,476.18	\$166,133.85	\$25,448,610.03	100.00	450.00

Table 14
WATER SALES BY METROPOLITAN WATER DISTRICT
Fiscal Years 1941-42 to 1967-68

Year	To Member Municipalities						Total
	Natural Water		Treated Water		Total to Agencies	To Others	
	Acres feet	Per cent	Acres feet	Per cent	Acres feet	Acres feet	
1941-42	0	0	9,372.6	100	9,372.6	70.7	9,443.3
1942-43	0	0	14,457.8	100	14,457.8	2,626.4	17,084.2
1943-44	0	0	15,874.9	100	15,874.9	3,301.8	19,176.7
1944-45	0	0	30,591.3	100	30,591.3	1,715.7	32,307.0
1945-46	0	0	46,685.8	100	46,685.8	1,264.2	47,950.0
1946-47	0	0	59,861.8	100	59,861.8	524.0	60,385.8
1947-48	41,093.5	36	71,995.4	64	113,088.9	116.8	113,255.7
1948-49	71,642.6	49	73,237.1	51	144,879.7	128.4	145,008.1
1949-50	69,308.0	49	72,936.0	51	142,244.0	23,371.6	165,615.6
1950-51	75,000.9	54	63,493.1	46	138,494.0	26,978.6	165,472.6
1951-52	66,674.3	44	84,616.1	56	151,290.4	42,464.2	193,754.6
1952-53	30,845.3	24	99,589.6	76	130,434.9	31,682.4	162,117.3
1953-54	120,773.0	51	115,550.6	49	236,323.6	7,820.7	244,144.3
1954-55	102,544.7	59	134,923.3	41	327,468.0	58,194.5	385,652.5
1955-56	190,337.2	53	169,506.4	47	359,843.6	45,562.9	405,406.5
1956-57	286,059.1	60	191,110.7	40	477,169.8	66,074.1	543,243.9
1957-58	266,024.1	57	197,900.0	43	463,924.1	75,612.8	539,536.9
1958-59	244,354.2	46	282,248.1	54	526,602.3	74,107.1	600,709.4
1959-60	425,019.0	58	304,874.8	42	729,893.8	3,523.2	733,417.0
1960-61	594,521.1	64	335,207.2	36	929,728.3	4,099.4	933,827.7
1961-62	608,811.0	66	312,975.9	34	921,786.9	3,676.9	925,463.8
1962-63	668,881.8	66	348,092.6	34	1,016,974.4	3,677.0	1,020,651.4
1963-64	671,853.4	63	388,553.9	37	1,060,407.3	3,776.7	1,064,184.0
1964-65	645,577.3	58	471,042.0	42	1,116,619.3	5,035.3	1,121,654.6
1965-66	550,630.8	52	503,424.9	48	1,054,055.7	4,821.8	1,058,877.5
1966-67	523,141.2	50	531,659.7	50	1,054,800.9	4,513.0	1,059,313.9
1967-68	514,248.1	48	557,730.9	52	1,071,979.0	4,934.9	1,076,913.9

Table 15
WATER PRODUCTION - METROPOLITAN WATER DISTRICT CONSTITUENT AREAS
Figures Furnished by Metropolitan Water District

Constituent Areas	1966-67			1967-68			M. W. D.			Other
	Amount	ac. ft.	Percent	Amount	ac. ft.	Percent	Amount	ac. ft.	Percent	
Anahelin	37,273	38,311	2.2	14,169	47	20,351	83			
Beverly Hills	12,222	13,274	5.6	5,942	26	8,232	62			
Burbank	25,214	26,579	5.4	4,493	17	22,156	43			
Calleguas M. W. D.	72,117	72,622	0.7	21,795	20	50,827	70			
Central Basin M. W. D.	209,537	215,776	4.4	54,446	25	164,330	73			
Chico Basin M. W. D.	168,235	172,098	2.2	8,453	5	153,353	85			
Coastal M. W. D.	23,742	29,974	26.2	28,338	35	1,438	5			
Compton	5,029	5,318	1.1	2,507	30	3,521	70			
Eastern M. W. D.	109,115	117,029	7.3	39,443	26	59,556	74			
Foothill M. W. D.	14,269	15,090	4.5	7,437	50	7,563	90			
Fullerton	21,585	22,743	5.4	10,315	45	12,423	53			
Glendale	22,310	24,259	8.7	3,763	16	20,476	54			
Las Virgenes M. W. D.	2,704	4,293	35.8	4,224	36	49	2			
Long Beach	59,305	63,494	7.6	36,747	56	27,057	42			
Los Angeles	519,545	551,331	6.2	94,029	17	456,522	93			
Orange County M. W. D.	199,604	209,138	9.7	56,139	28	154,090	72			
Pasadena	31,821	34,493	8.4	15,629	45	18,863	55			
Pasadena Valley M. W. D.	61,740	70,487	14.2	14,422	20	56,065	40			
San Diego C. W. A.	365,820	388,170	10.4	325,019	79	60,151	21			
San Marino	4,240	4,494	1.5	7	0	4,387	100			
Santa Ana	22,403	24,461	9.2	5,395	24	19,066	60			
Santa Monica	15,596	16,899	8.4	10,108	60	6,772	40			
Torrance	21,397	23,452	5.7	19,472	83	3,960	17			
Upper San Gabriel Valley M. W. D.	164,245	175,473	6.6	0	0	175,473	100			
West Basin M. W. D.	149,336	161,527	5.2	60	60	50,364	31			
Western M. W. D.	214,260	228,022	6.4	28,022	12	200,000	88			
Totals	2,442,576	2,615,704	7.1	924,810	32	1,750,884	65			

NOTES: (a) Includes 4,355 acre-feet of seepage into San Jacinto Tunnel.
 (b) Does not include 15,951 acre-feet of untreated water delivered to Central Basin for groundwater replenishment purposes within the Central and West Basin Water Replenishment District, and also does not include 3,481 acre-feet of treated water used for sea water desalination.
 (c) Does not include 2,229 acre-feet of untreated water delivered for groundwater replenishment purposes.
 (d) Does not include 51,779 acre-feet of untreated water delivered for groundwater replenishment purposes, and also does not include 1,090 acre-feet of treated water used for sea water desalination.
 (e) Includes 1,273 acre-feet delivered from reservoir storage.
 (f) 30,000 acre-feet were delivered for groundwater replenishment purposes.
 (g) Does not include 40,534 acre-feet used for sea water desalination.

Table 16

ANALYSIS OF COLORADO RIVER AQUEDUCT WATER
TAKEN AT WEST PORTAL OF SAN JACINTO TUNNEL
For year Ending June 30, 1968

Constituent	Symbol	ANALYSIS		
		Average	Maximum	Minimum
Silica	SiO2	8.8 ppm	10.0 ppm	7.2 ppm
Iron	Fe	Trace	Trace	Trace
Calcium	Ca	83.0 ppm	85.0 ppm	80.0 ppm
Magnesium	Mg	29.5 ppm	31.0 ppm	25.5 ppm
Sodium	Na	102.0 ppm	105.0 ppm	97.0 ppm
Potassium	K	4.0 ppm	5.0 ppm	3.0 ppm
Carbonate	CO3	1.0 ppm	2.0 ppm	0 ppm
Bicarbonate	HCO3	146.0 ppm	151.0 ppm	139.0 ppm
Sulfate	SO4	293.0 ppm	298.0 ppm	288.0 ppm
Chloride	Cl	90.0 ppm	95.0 ppm	85.0 ppm
Nitrate	NO3	1.1 ppm	1.5 ppm	0.5 ppm
Fluoride	F	0.4 ppm	0.5 ppm	0.4 ppm
Total Dissolved Solids		666.0 ppm	794.0 ppm	675.0 ppm
Hardness as CaCO3				
Total		329.0 ppm	340.0 ppm	322.0 ppm
Carbonate		121.0 ppm	126.0 ppm	115.0 ppm
Noncarbonate		208.0 ppm	214.0 ppm	204.0 ppm
Alkalinity - Phenolphthalein		1.0 ppm	2.0 ppm	0 ppm
Alkalinity - Total		121.0 ppm	126.0 ppm	115.0 ppm
Free Carbon Dioxide	CO2	1.0 ppm	2.0 ppm	0 ppm
Hydrogen Ion Concentration	pH	8.3	8.5	8.1
Electrical Conductivity	ECx106 at 25°C	1,115.0	1,140.0	1,070.0

Table 17
ASSESSED VALUATIONS AND TAX RATES OF THE
METROPOLITAN WATER DISTRICT OF SOUTHERN CALIFORNIA

Fiscal Year	Area (acres)	Assessed Valuation Total (1)	Tax Rate	
			Per \$100 Secured	Per \$100 Unsecured
1929-30	-	\$ 2,439,836,920	\$0.04	\$0.00
1930-31	-	2,431,684,250	.03	.04
1931-32	-	2,382,184,445	.03	.03
1932-33	-	1,936,051,180	.04	.03
1933-34	-	1,654,403,890	.04	.04
1934-35	-	1,587,147,565	.10	.04
1935-36	-	1,783,531,020	.20	.10
1936-37	-	1,789,160,685	.37	.20
1937-38	-	1,827,765,725	.40	.37
1938-39	-	1,896,966,255	.40	.40
1939-40	-	1,910,152,190	.42	.40
1940-41	389,588	1,841,248,450	.49	.42
1941-42	399,875	1,900,589,934	.48	.49
1942-43	400,614	2,001,924,735	.48	.48
1943-44	401,190	2,005,496,430	.48	.48
1944-45	401,538	2,109,192,795	.48	.48
1945-46	402,779	2,159,731,425	.50	.48
1946-47	501,425	2,413,186,570	.48	.50
1947-48	546,573	3,443,312,822 (2)	.35	.48
1948-49	578,368	3,883,081,225	.34	.35
1949-50	585,184	4,181,812,855	.34	.34
1950-51	721,850	4,281,519,725	.31	.34
1951-52	995,130	4,674,664,040	.30	.31
1952-53	1,120,448	5,372,498,515	.28	.30
1953-54	1,368,038	6,015,691,980	.25	.28
1954-55	1,793,651	6,548,392,114	.23	.25
1955-56	1,876,250	8,514,868,335	.21	.23
1956-57	1,932,205	9,674,000,560	.19	.21
1957-58	2,046,189	11,235,906,510	.18	.19
1958-59	2,128,333	12,070,838,070	.18	.18
1959-60	2,171,290	12,714,205,470	.17	.18
1960-61	2,544,960	13,737,971,925	.16	.17
1961-62	2,647,014	14,893,202,587	.15	.16
1962-63	2,797,946	15,699,681,030	.14	.15
1963-64	2,825,306	17,261,412,395	.14	.14
1964-65	2,882,144	17,757,246,740	.14	.14
1965-66	2,890,266	19,143,157,788	.14	.14
1966-67	2,901,421	20,979,150,165	.14	.14
1967-68	3,061,885	22,732,157,500	.14	.14
1968-69 (3)		24,016,568,274	.16	.14

- (1) Includes secured, unsecured, and public utility valuations.
- (2) First year in which Authority assessed valuation was included in District's assessed valuation.
- (3) Data for 1968-69 were available before completion of report and are included for convenience of reader.



SAN DIEGO COUNTY WATER AUTHORITY

2750 FOURTH AVENUE
SAN DIEGO, CALIFORNIA 92103

Telephone 297-1218 - Area Code 714

September 20, 1968

BOARD OF DIRECTORS
FRAN A. POLLARD, CHAIRMAN
R. C. BAIGER, VICE CHAIRMAN
HARRY H. DILL, SECRETARY

LINDEN H. BURRELL
GENERAL MANAGER
AND CHIEF ENGINEER
WILLIAM H. JENNINGS
GENERAL COUNSEL

Mr. Linden H. Burrell
General Manager and Chief Engineer
San Diego County Water Authority
2750 Fourth Avenue
San Diego, California 92103

Dear Sir:

Submitted herewith is the financial report of the San Diego County Water Authority for the fiscal year ended June 30, 1968. The accompanying statements summarize the Water Authority's financial position and results of its operations for fiscal year 1967-68.

At the direction of the Board of Directors, the General Fund and the Capital Improvement Fund were combined as of June 30, 1968, and the name of the "Reserve Fund" was changed to "Debt Service Reserve Fund."

The water sales override of \$1.25 per acre foot, together with other nonoperating revenues in the General Fund, were sufficient to meet all administrative, maintenance and operation expenditures for the year.

The general obligation waterworks bonds of \$50,000,000.00 authorized with an 8% favorable vote by a special election conducted on June 7, 1966, are scheduled to be sold during October, 1968. This bond issue will consist of all Authority bonds authorized but unissued.

Respectfully,

Henry G. Lozano
Henry G. Lozano
Chief Accounting Officer

MEMBER AGENCIES

CITIES
DEL MAR
ESCONDIDO
NATIONAL CITY
SAN MARINO
SAN DIEGO

IRRIGATION DISTRICTS
MELI
SAN DIEGO
SANTA FE
SOUTH BAY

PUBLIC UTILITY DISTRICTS
FALLBROOK

MUNICIPAL WATER DISTRICTS
BONITA CALIFORNIA
CARLSBAD
DE LAZAR DISTRICT
OLVERMAN
OTTAWA
POMONA
SANBORNE
SANBORNE
SANCTA DEL MAR
SAN SAN DIEGO
SALVAY CENTER
TIBBON

PEAT, MARWICK, MITCHELL & CO.

CERTIFIED PUBLIC ACCOUNTANTS

1950 FIFTH AVENUE

SAN DIEGO, CALIFORNIA 92101

The Board of Directors
San Diego County Water Authority:

We have examined the balance sheet of the San Diego County Water Authority as of June 30, 1968, and the related statement of revenue and expense and changes in reserves and fund balances for the year then ended. Our examination was made in accordance with generally accepted auditing standards, and accordingly included such tests of the accounting records and such other auditing procedures as we considered necessary in the circumstances.

The financial statements included in this report were prepared from accounting records kept on a modified accrual basis. In general, revenues are recorded when earned and expenditures are recorded upon incurrence of liability, except accrued interest on outstanding indebtedness, which is payable from appropriations of the following year.

In our opinion, the accompanying balance sheet and statements of revenue and expense and changes in reserves and fund balances present fairly the financial position of the San Diego County Water Authority at June 30, 1968, and the results of its operations for the year then ended, in conformity with generally accepted accounting principles applied on a basis consistent with that of the preceding year. The current year's supplementary data included in Schedules 1 to 7, Tables P-1 to P-5 and in the comments on pages 19 to 20, have been subjected to the same auditing procedures and, in our opinion, are stated fairly in all material respects when considered in conjunction with the basic financial statements taken as a whole.

Peat, Marwick, Mitchell & Co.

August 16, 1968

FINANCIAL REPORT

Exhibit A
BALANCE SHEET
June 30, 1968
With comparative figures for 1967

ASSETS

	1968	1967
GENERAL FUND ASSETS (note 1):		
Current assets:		
Cash with treasurer	\$ 1,659,704.32	102,469.42
Petty cash	935.00	300.00
Investments, at cost (market value 1968 - \$247,780)	240,057.50	362,987.32
Interest receivable	2,358.50	-
Accounts receivable	1,064,507.07	659,000.08
Current installments of other receivables	76,432.81	-
Inventory of water in storage, at cost (first-in, first-out)	451,842.70	593,271.60
Inventory of materials and supplies	2,068.07	2,068.07
Total current assets	<u>3,447,700.27</u>	<u>2,123,128.42</u>
Other receivables:		
Notes receivable	103,344.29	-
Annexation charges receivable	269,132.82	-
	<u>372,477.11</u>	<u>-</u>
Less current installments (above)	335,478.14	-
Net other receivables	<u>79,828.97</u>	<u>-</u>
Total general fund assets	<u>3,700,746.10</u>	<u>2,123,098.42</u>
SPECIAL FUND ASSETS (note 1):		
Debt service reserve fund:		
Cash with treasurer	752,887.76	722,973.42
Interest receivable	3,286.83	-
Investments, at cost (market value 1968 - \$100,151)	92,840.00	123,418.31
Total debt service reserve fund	<u>848,114.59</u>	<u>846,391.73</u>
Waterworks bonds, 1967, interest and sinking fund:		
Cash with treasurer	127,121.81	134,679.33
Cash with fiscal agent	3,150.00	4,000.00
Interest receivable	1,240.14	-
Total waterworks bonds, 1967, interest and sinking fund	<u>131,511.97</u>	<u>138,679.33</u>
U.S. Government contract fund:		
Cash with treasurer	20,358.44	14,480.00
Due from Metropolitan Water District (note 2)	7,092,467.14	8,528,252.58
Total U.S. Government contract fund	<u>7,112,825.58</u>	<u>8,542,732.58</u>
Waterworks bonds, 1957, improvement fund:		
Cash with treasurer	2,176,733.25	2,430,196.85
Investments, at cost (market value 1968 - \$1,032,159)	1,000,000.00	-
Total waterworks bonds, 1957, improvement fund	<u>3,176,733.25</u>	<u>2,430,196.85</u>
Waterworks bonds, 1957, interest and redemption fund:		
Cash with treasurer	84,562.60	60,419.76
Cash with fiscal agent	14,123.50	20,390.25
Interest receivable	9,252.65	-
Total waterworks bonds, 1957, interest and redemption fund	<u>107,938.75</u>	<u>80,810.01</u>
Capital improvement fund (note 7):		
Cash with treasurer	-	378,509.23
Annexation charges receivable - note due	-	172,802.12
Total capital improvement fund	<u>-</u>	<u>551,311.35</u>
Total special fund assets	<u>12,262,635.46</u>	<u>12,669,302.76</u>
PROPERTY, PLANT, EQUIPMENT AND PARTICIPATION RIGHTS, AT COST (note 3):		
Property, plant and equipment	56,083,080.12	55,704,491.02
Less accumulated depreciation	<u>5,276,388.84</u>	<u>5,389,027.20</u>
Net property, plant and equipment (Schedule 7)	<u>50,806,691.28</u>	<u>50,315,463.82</u>
Construction work in progress	542,356.71	122,579.69
Participation rights in Metropolitan Water District	<u>66,801,797.37</u>	<u>60,324,444.57</u>
Net property, plant, equipment and participation rights	<u>118,150,845.36</u>	<u>110,752,477.98</u>
	<u>\$ 132,618,467.72</u>	<u>125,578,906.23</u>

See accompanying notes to financial statements.

SAN DIEGO COUNTY WATER AUTHORITY

Exhibit A
BALANCE SHEET
June 30, 1968
With comparative figures for 1967

LIABILITIES, RESERVES AND FUND BALANCES

	1968	1967
CURRENT LIABILITIES - GENERAL FUND:		
Accounts payable	\$ 1,905,014.53	1,221,978.95
Unapplied credits for irrigation water	73,188.15	41,042.12
Advances by agencies for construction	13,270.55	-
Deposits by agencies for annexation	500.00	2,500.00
Total current liabilities - general fund	<u>2,092,873.23</u>	<u>1,265,521.07</u>
CURRENT LIABILITIES - SPECIAL FUNDS:		
Current installments of long-term debt (note 4)	2,175,664.07	1,912,061.41
Accounts payable	1,369.16	2,371.06
Total current liabilities - special funds	<u>2,177,033.23</u>	<u>1,914,432.47</u>
LONG-TERM DEBT (note 4):		
General obligation bonds payable - not due	33,575,000.00	34,015,000.00
Estimated balance on U.S. Government contracts	15,004,048.84	15,580,079.68
Balance of annexation charges - Metropolitan Water District	<u>14,260,646.82</u>	<u>11,754,878.26</u>
	<u>62,839,695.66</u>	<u>61,349,957.94</u>
Less current installments (above)	<u>2,175,664.07</u>	<u>1,912,061.41</u>
Net long-term debt	<u>60,664,031.59</u>	<u>59,437,896.53</u>
RESERVES AND FUND BALANCES:		
Reserves:		
Reserve for notes receivable	103,344.29	-
Reserve for annexation charges receivable - not due	196,132.82	-
Reserve for encumbrances	6,042.30	388,540.00
Reserve for debt redemption:		
Retirement of general obligation bonds	239,561.62	219,489.94
Retirement of U.S. Government contract	<u>7,092,467.14</u>	<u>8,442,732.58</u>
Total reserves	<u>8,571,508.66</u>	<u>8,990,732.63</u>
Net equity in property, plant, equipment and participation rights (note 3)	54,000,190.43	49,094,161.04
Appropriated fund balances:		
Incomplete projects (continuing appropriations):		
General fund	93,500.00	94,860.73
Debt service reserve fund	100,902.59	119,780.07
Waterworks bonds, 1957, improvement fund	541,706.04	697,001.83
Capital improvement fund (note 7)	-	2,073.84
Total incomplete projects	<u>736,108.63</u>	<u>913,716.47</u>
Petty cash fund balance	300.00	300.00
Educational information fund balance	-	1,064.90
Debt service reserve fund balance	752,211.60	726,811.06
Waterworks bonds, 1957, improvement fund	2,620,025.51	1,740,916.75
Capital improvement fund (note 7)	-	416,688.62
Total appropriated fund balances	<u>4,121,047.74</u>	<u>3,795,524.70</u>
Unappropriated fund balances:		
Invested in water in storage	451,842.70	593,271.60
Invested in materials and supplies	2,068.07	2,068.07
Available for appropriation	<u>818,112.22</u>	<u>162,879.14</u>
Total unappropriated fund balances	<u>1,272,022.99</u>	<u>748,218.81</u>
Total reserves and fund balances	<u>67,954,569.82</u>	<u>62,638,087.18</u>
Contingent liabilities and commitments (notes 4, 5 and 6),		
	<u>\$ 132,618,467.72</u>	<u>125,578,906.23</u>

SAN DIEGO COUNTY WATER AUTHORITY

Exhibit B

STATEMENT OF CHANGES IN RESERVES AND FUND BALANCES
Year ended June 30, 1968

	Total	General fund	Debt service reserve fund
BALANCES, JULY 1, 1967	\$ 62,638,057.18	857,577.44	846,391.93
ADDITIONS:			
Excess of revenue over expense - general fund (Exhibit C)	64,981.35	64,981.35	-
Revenue other than general fund (Schedule 2)	2,966,337.30	-	25,600.54
Proceeds from lawsuits against pipe manufacturers for price fixing	1,320,165.22	-	-
Refund of prior year expenditures	786.01	786.01	-
Interfund transfers (note 7)	1,798,486.94	798,486.94	-
Agencies contributions to Metropolitan Water District:			
Reduction of annexation charges due Metropolitan Water District	595,031.57	-	-
Participation rights in Metropolitan Water District	2,966,552.60	-	-
Additional annexation charges	30,100.00	-	-
Payments on U.S. Government contracts	879,029.84	-	-
Redemptions of waterworks bonds	440,000.00	-	-
Additions to property, plant and equipment			
Additions, net (Schedule 7)	378,569.10	-	-
Accumulated depreciation on retirements	3,959.62	-	-
Additions to construction work in progress	218,777.12	-	-
Total additions	11,699,756.87	864,234.30	25,600.54
DEDUCTIONS:			
Expenditures, other than general fund (Schedule 3)	3,456,090.58	-	15,878.28
Tax collection expense	5,692.66	-	-
Decrease in amount due from Metropolitan Water District	456,802.52	-	-
Annexation charges collected (included in revenues above)	36,925.27	-	-
Interfund transfers (note 7)	1,798,486.94	-	-
Expenditures from general fund for plant and equipment	37,938.85	37,938.85	-
Decrease in special deposit for bond interest	7,116.75	-	-
Depreciation expense	584,250.66	-	-
Total deductions	6,383,244.23	37,938.85	15,878.28
Net change	5,316,512.64	826,295.45	9,722.26
BALANCES, JUNE 30, 1968	\$ 67,954,569.82	1,683,872.89	856,114.19

ANALYSIS OF RESERVES AND FUND BALANCES:

Reserves:			
Reserve for notes receivable	169,344.29	169,344.29	-
Reserve for annexation charges receivable - not due	166,133.85	166,133.85	-
Reserve for encumbrances	6,042.30	2,571.78	-
Reserve for debt redemption	8,220,968.22	-	-
Net equity in property, plant, equipment and participation rights	54,009,190.43	-	-
Appropriated fund balances:			
Incomplete projects (continuing appropriations)	739,110.63	93,500.00	103,902.59
Other	3,382,737.11	300.00	752,211.60
Unappropriated fund balances	1,232,022.99	1,252,022.99	-
	\$ 67,954,569.82	1,683,872.89	856,114.19

See accompanying notes to financial statements.

FINANCIAL REPORT

Exhibit B

STATEMENT OF CHANGES IN RESERVES AND FUND BALANCES
Year ended June 30, 1968

Waterworks bonds, 1947, interest and sinking fund	U.S. Government contract fund	Waterworks bonds, 1957, improvement fund	Waterworks bonds, 1957, interest and redemption fund	Capital improvement fund	Net equity in property, plant, equipment and participation rights
138,079.93	8,440,762.69	2,428,007.68	80,810.01	751,306.46	49,094,521.04
-	-	-	-	-	-
100,897.74	1,156,587.07	-	1,650,054.68	53,197.27	-
-	-	-	-	1,320,165.22	-
-	-	-	-	-	-
-	-	1,000,000.00	-	-	-
-	-	-	-	-	-
-	-	-	-	-	595,031.57
-	-	-	-	-	2,966,552.60
-	-	-	-	30,100.00	-
-	-	-	-	-	879,029.84
-	-	-	-	-	440,000.00
-	-	-	-	-	-
-	-	-	-	-	378,569.10
-	-	-	-	-	3,959.62
-	-	-	-	-	218,777.12
100,897.74	1,156,587.07	1,000,000.00	1,650,054.68	1,403,462.49	5,498,920.05
107,000.00	1,148,700.59	252,603.59	1,612,580.00	319,268.12	-
215.70	1,480.06	-	3,968.29	88.62	-
-	456,802.52	-	-	-	-
-	-	-	-	36,925.27	-
-	-	-	-	1,798,486.94	-
-	-	-	-	-	-
850.00	-	-	6,266.75	-	-
-	-	-	-	-	-
584,250.66	-	-	-	-	584,250.66
6,383,244.23	37,938.85	15,878.28	1,622,815.04	2,154,768.95	504,250.66
(7,167.96)	(450,338.09)	747,396.41	27,239.04	(751,306.46)	4,914,669.39
131,511.97	7,990,426.60	3,175,404.09	108,049.65	-	54,009,190.43

SAN DIEGO COUNTY WATER AUTHORITY

Exhibit C

STATEMENT OF REVENUE AND EXPENSE - GENERAL FUND

Year ended June 30, 1968
With comparative figures for 1967

	1968	1967
WATER SALES:		
Gross revenue from water sales	\$ 8,167,753.59	6,527,074.23
Less irrigation credits	<u>956,812.74</u>	<u>890,698.52</u>
Net revenue from water sales	<u>7,210,940.85</u>	<u>5,628,375.71</u>
COST OF WATER SOLD:		
Water in storage, beginning of year	593,271.60	563,940.00
Water purchased	<u>7,709,203.92</u>	<u>6,357,436.60</u>
	6,302,475.52	6,921,376.60
Less irrigation credits	<u>956,812.74</u>	<u>890,698.52</u>
	7,345,662.78	6,022,678.08
Storage and pumping charges	<u>1,240.60</u>	<u>1,000.00</u>
	7,346,903.38	6,023,678.08
Less water in storage, end of year	<u>431,842.70</u>	<u>593,271.60</u>
Cost of water sold	<u>6,915,060.68</u>	<u>5,430,406.48</u>
Gross margin from water sales	295,880.17	197,969.23
OTHER OPERATING REVENUE:		
Water transportation and service charges	260.00	510.00
Overhead reimbursement for engineering services for Metropolitan Water District	<u>26,314.32</u>	<u>24,469.72</u>
Gross operating revenue	322,454.49	222,949.95
OPERATING EXPENSE (Schedule 1)		
	<u>304,825.97</u>	<u>292,909.65</u>
Operating revenue over (under) expense before depreciation	17,628.52	(69,960.70)
DEPRECIATION EXPENSE		
	<u>584,250.66</u>	<u>573,093.00</u>
Operating revenue over (under) expense	<u>(566,622.14)</u>	<u>(643,053.70)</u>
NONOPERATING REVENUE:		
Property rentals	1,330.00	1,330.00
Earnings on investments	47,012.75	46,854.92
Sale of surplus items	-	1,195.60
Miscellaneous revenues, net of refunds	<u>(989.92)</u>	<u>(661.27)</u>
Total nonoperating revenue	<u>47,352.83</u>	<u>48,719.25</u>
	<u>(519,269.31)</u>	<u>(594,334.45)</u>
PROVISION FOR DEPRECIATION (an expense which did not require current cash outlay)		
	<u>584,250.66</u>	<u>573,093.00</u>
Excess of revenue over (under) expense - to fund balance	<u>\$ 64,981.35</u>	<u>(21,241.45)</u>

See accompanying notes to financial statements.

FINANCIAL REPORT

NOTES TO FINANCIAL STATEMENTS

June 30, 1968

(1) TAXES RECEIVABLE

Uncollected taxes receivable are fully reserved and are not included in the accompanying financial statements. The fund analysis of uncollected taxes receivable is as follows:

	1968	1967
General fund (note 7)	\$ 2,687.51	-
Waterworks bonds, 1947, interest and sinking fund	2,622.94	2,699.74
U.S. Government contract fund	21,488.33	25,579.61
Waterworks bonds, 1957, interest and redemption fund	55,279.76	69,502.79
Capital improvement fund	<u>-</u>	<u>3,791.34</u>
Total uncollected taxes receivable	<u>\$ 82,078.54</u>	<u>101,573.48</u>

(2) DUE FROM METROPOLITAN WATER DISTRICT

The amount of \$7,969,467.14 due the Authority from Metropolitan Water District, as of June 30, 1968, represents the estimated balance of the District's share of the cost of the first and second pipelines of the First San Diego Aqueduct. Upon final settlement, the first pipeline is subject to adjustment by the U.S. Government. The current portion of this receivable at June 30, 1968 is \$456,802.52.

(3) PROPERTY, PLANT, EQUIPMENT AND PARTICIPATION RIGHTS

Net equity in property, plant, equipment and participation rights is shown as follows:

	1968	1967
Property, plant and equipment:		
Financed by:		
General obligation bonds	\$ 34,248,066.02	34,249,826.66
U.S. Government contract	14,949,858.27	14,949,858.27
Current revenues	6,155,432.07	5,775,022.33
Agencies contributions	<u>729,683.76</u>	<u>729,683.76</u>
	56,083,060.12	55,704,491.02
Less accumulated depreciation	<u>5,978,328.24</u>	<u>5,389,037.20</u>
	50,104,731.88	50,306,453.82
Construction work in progress	342,356.71	128,579.69
Participation rights in Metropolitan Water District*	<u>66,801,797.37</u>	<u>60,334,444.57</u>
Carried forward	<u>\$ 116,648,885.96</u>	<u>110,767,477.98</u>

SAN DIEGO COUNTY WATER AUTHORITY

NOTES TO FINANCIAL STATEMENTS (Continued)

Brought forward	\$ 118,648,885.96	110,767,477.98
Less long-term debt:		
General obligation bonds payable - not due	33,875,000.00	34,015,000.00
Estimated balance on U.S. Government contracts	15,014,048.84	15,893,078.68
Balance of annexation charges due Metropolitan Water District	<u>14,050,646.69</u>	<u>11,764,678.26</u>
	<u>62,939,695.53</u>	<u>61,672,756.94</u>
Net equity in property, plant, equipment and participation rights	\$ 54,009,190.43	49,094,521.04

*The recorded value and equity in participation rights in the Metropolitan Water District is as follows:

	1968	1967
Total recorded participation rights	\$ 66,201,797.37	60,334,444.57
Less unpaid balance of annexation charges due Metropolitan Water District	<u>14,050,646.69</u>	<u>11,764,678.26</u>
Net equity in participation rights	\$ <u>52,151,150.68</u>	<u>48,569,766.31</u>

(4) LONG-TERM DEBT

(a) General obligation bonds not due: Schedule 6 presents in detail the outstanding bonded indebtedness. The following analysis presents the current principal maturity at June 30, 1968:

1947 waterworks bonds	\$ 100,000.00
1957 waterworks bonds:	
Series:	
A	75,000.00
B	75,000.00
C	90,000.00
D	70,000.00
E	<u>110,000.00</u>
	<u>420,000.00</u>
Total current portion of general obligation bonds	\$ <u>520,000.00</u>

(b) Estimated balance due on U.S. Government contracts at June 30, 1968 is \$15,014,048.84. Of this amount \$7,969,467.14 is due to the Authority from Metropolitan Water District.

FINANCIAL REPORT

NOTES TO FINANCIAL STATEMENTS (Continued)

Balance due on contracts:

	Interest rate	Principal balance	Current portion
First pipeline:			
Authority's share	None	\$ 2,437,500.00	250,000.00
Metropolitan Water District's share	None	<u>2,437,500.00</u>	<u>250,000.00</u>
		<u>4,875,000.00</u>	<u>500,000.00</u>
Second pipeline:			
Authority's share	2.599%	4,607,061.70	172,227.32
Metropolitan Water District's share	2.599%	<u>5,531,967.14</u>	<u>206,802.52</u>
		<u>10,139,048.84</u>	<u>379,029.84</u>
Total		\$ <u>15,014,048.84</u>	<u>879,029.84</u>

The amount payable on the U.S. Government contract relating to the first pipeline of the First San Diego Aqueduct is subject to adjustment upon final settlement by the U.S. Government.

(c) The unpaid balance of annexation charges due the Metropolitan Water District at June 30, 1968 is \$14,050,646.69. The current portion of this liability at June 30, 1968 is \$776,834.23.

The total current portion of long-term debt set forth above at June 30, 1968 and June 30, 1967 is \$2,175,864.07 and \$1,912,061.41, respectively.

(5) UNISSUED BONDS

There are \$30,000,000.00 of unissued bonds in the waterworks bonds, 1966 improvement fund at June 30, 1968. These bonds are scheduled to be sold in October 1968. The proceeds will be used for construction of the second pipeline of the Second San Diego Aqueduct.

(5) SALE OF BRANCH PIPELINE

On November 13, 1963, the Authority entered into an agreement to sell a branch pipeline to the City of Oceanside. The total price (\$100,000.00) is subject to purchase by the City in annual amounts of \$10,000.00 or more. During the year, the City purchased one-tenth of the pipeline for \$10,000.00 and additional sections will be sold for cash in future years.

(7) CAPITAL IMPROVEMENT FUND

Effective for the year ended June 30, 1968, all of the capital improvement fund assets were transferred to other funds as follows:

Transferred to general fund:	
Cash	\$ 463,008.80
Notes receivable	169,344.29
Annexation charges receivable - not due	<u>166,133.85</u>
	798,486.94
Transferred to waterworks bonds, 1957 improvement fund - investments	<u>1,000,000.00</u>
	\$ <u>1,798,486.94</u>

Schedule 1

OPERATING EXPENSES

Year ended June 30, 1968
With comparative figures for 1967

	1968	1967
GENERAL AND ADMINISTRATION:		
Engineering department	\$ 42,832.14	51,135.62
Accounting department	19,358.44	18,232.31
Stenographic department	14,906.28	12,763.69
Legal services	12,000.00	12,000.00
Public relations	3,960.00	3,700.00
Employee retirement - Public Employees' Retirement System	13,588.85	10,881.85
Employee retirement - Old Age, Survivors and Disability Insurance	6,558.65	6,214.55
Employee insurance - California Physicians Service	3,445.80	2,566.32
Vacation and sick leave	20,611.90	16,342.09
Expense of directors	6,374.97	4,518.11
Expense of staff	2,954.06	2,755.96
Auditing	2,800.00	2,600.00
Utilities and telephone - San Diego	3,452.39	3,245.92
Postage	1,485.06	977.25
Printing, binding and reproduction	4,827.37	5,304.76
Trust fees and commissions	3,581.33	3,724.46
Insurance and fidelity bonds	12,399.06	8,607.12
Memberships and subscriptions	1,514.55	1,410.96
Protection of Colorado River rights	2,840.00	3,485.00
Maintenance of office equipment	1,007.72	853.93
Maintenance of San Diego office	1,910.65	2,793.81
Contingencies	<u>3,108.34</u>	<u>6,091.41</u>
	<u>185,627.55</u>	<u>180,504.92</u>
OPERATIONS:		
System operations	23,764.24	18,031.89
Escondido office expense	4,901.49	3,232.95
Radio repair and upkeep	2,419.63	2,030.30
Office utilities and telephone	3,447.37	1,641.79
Control station utilities	5,723.91	4,311.41
Miscellaneous salaries	1,662.61	994.62
Overtime	3,418.08	2,332.78
Contingencies	<u>752.32</u>	<u>-</u>
	<u>46,097.72</u>	<u>32,595.94</u>
MAINTENANCE:		
Maintenance supervision	5,826.49	5,415.36
Patrolling aqueducts	4,870.06	4,993.83
Pipeline - First Aqueduct	3,335.81	4,169.73
Pipeline - Second Aqueduct	1,428.21	1,716.03
Crossconnection, other pipelines and tunnels	1,984.46	1,897.34
Line structures	2,050.76	2,704.23
Control buildings	3,996.94	3,240.51
Buildings and grounds - Escondido	5,195.43	2,708.42
Access roads	9,706.75	10,931.65
Valve greasing and repairs	4,709.12	3,635.15
Meter and controls	2,697.35	3,136.19
Chlorination of aqueducts	55,194.00	43,425.70
Chlorine station - power	3,874.42	2,702.87
Chlorine equipment and station maintenance	1,280.28	4,786.71
Auto and truck - operation and maintenance	11,119.48	10,686.11
Construction equipment - operation and maintenance	3,381.55	3,803.61
Purchases and repairs of small tools and equipment	1,978.42	987.90
Miscellaneous operation of shop	1,482.20	1,625.87
Uniforms	1,446.90	1,379.49
Miscellaneous salaries	3,897.45	4,048.56
Overtime	1,430.54	3,019.83
Contingencies	<u>828.72</u>	<u>61.34</u>
	<u>131,896.31</u>	<u>120,689.23</u>
OTHER EXPENSES:		
Public information	-	3,336.04
Economic impact study	-	3,789.99
Engineering study of reservoir sites	<u>1,136.65</u>	<u>5,710.44</u>
	<u>1,136.65</u>	<u>8,836.47</u>
Total operating expense before charges to other appropriations	364,858.23	346,627.26
LESS CHARGES TO OTHER APPROPRIATIONS	<u>60,032.28</u>	<u>53,717.41</u>
Total operating expenses (Exhibit C)	\$ <u>304,825.97</u>	<u>292,909.85</u>

FINANCIAL REPORT

Schedule 2

REVENUE

Year ended June 30, 1968
With comparative figures for 1967

Source	1968	1967
Taxes, secured, current levy	\$ 1,921,902.39	1,926,670.80
Taxes, unsecured, current levy	207,608.73	163,333.18
Taxes, secured, prior years' levies	56,859.28	53,132.04
Taxes, unsecured, prior years' levies	6,748.04	912.63
Penalties on delinquent taxes	7,116.66	6,098.58
Receipts in lieu of taxes	4,323.39	542.49
Sale of water	7,210,940.85	5,628,375.71
Miscellaneous tax sales	442.85	-
Earnings on investments	212,976.59	227,426.77
Proceeds from sale of pipeline (note 6)	10,000.00	10,000.00
Rentals	1,330.00	1,330.00
Contract payments from Metropolitan Water District	603,937.60	609,312.40
Use of Authority facilities	180.00	510.00
Sale of surplus items	-	1,195.60
Engineering services for Metropolitan Water District - overhead reimbursement	26,314.32	24,469.72
Miscellaneous revenues	<u>384.67</u>	<u>270.00</u>
Total	\$ <u>10,271,165.37</u>	<u>8,653,579.92</u>

Distribution by Funds

General fund	<u>7,284,828.07</u>	<u>5,702,074.68</u>
Other funds:		
Debt service reserve fund	26,600.54	16,127.49
Waterworks bonds, 1947, interest and sinking fund	100,897.74	82,676.61
U.S. Government contract fund	1,156,587.07	1,135,730.54
Waterworks bonds, 1957, interest and redemption fund	1,650,054.68	1,651,947.61
Capital improvement fund	<u>53,187.27</u>	<u>65,023.09</u>
Total other funds (Exhibit B)	<u>2,986,337.30</u>	<u>2,951,505.24</u>
Total	\$ <u>10,271,165.37</u>	<u>8,653,579.92</u>

See note 6 to the basic financial statements.

SAN DIEGO COUNTY WATER AUTHORITY

Schedule 3

APPROPRIATIONS AND EXPENDITURES

Year ended June 30, 1968

Work order number	Purpose	Prior year's appropriations carried over	Appropriations 1967-68
256	Rio San Diego interconnection with San Diego County Water Authority, Station 259+00	\$ 2,776.61	-
258	Engineering services for Metropolitan Water District Less reimbursements	93,500.00	-
259	Engineering and construction of second pipeline of Second San Diego Aqueduct (Phase I)	683,388.66	-
261	Legal action against certain pipe companies for conspiracy and price fixing	119,780.87	-
265	Engineering study of reservoir sites	1,493.73	-
268	Installation of eight telemetry and supervisory control units	3,702.97	22,220.00
269	Construction of new operations building, shop building and site development together with architectural fees and landscaping	331,837.23	-
270	Rio San Diego MWD service connection No. 5 Station 100+80	-	19,000.00
271	Engineering and construction of second pipeline of Second San Diego Aqueduct (Phase II)	-	85,000.00
Budget fiscal year 1967-68:			
	General fund	-	7,843,225.00
	Waterworks bonds, 1947, interest and sinking fund	-	107,000.00
	U.S. Government contract fund	-	1,148,700.59
	Waterworks bonds, 1957, interest and redemption fund	-	1,612,580.00
		1,236,480.07	10,237,725.59
	Less advances by agencies	-	19,000.00
	Total Authority	\$ 1,236,480.07	10,218,725.59
Distribution by Funds			
	General fund	94,993.73	7,843,225.00
	Other funds:		
	Debt service reserve fund	119,780.87	-
	Waterworks bonds, 1947, interest and sinking fund	-	107,000.00
	U.S. Government contract fund	-	1,148,700.59
	Waterworks bonds, 1957, improvement fund	687,091.63	107,220.00
	Waterworks bonds, 1957, interest and redemption fund	-	1,612,580.00
	Capital improvement fund	334,813.84	-
	Total other funds	1,141,486.34	2,975,500.59
	Total	\$ 1,236,480.07	10,218,725.59

FINANCIAL REPORT

Schedule 3

APPROPRIATIONS AND EXPENDITURES

Year ended June 30, 1968

Expenditures 1967-68	Cancelled appropriations	Unexpended appropriations June 30, 1968	Encumbrances	Unencumbered balance
-	2,776.61	-	-	-
212,975.30 (212,975.30)	-	93,500.00	-	93,500.00
231,061.47	-	452,327.19	-	452,327.19
15,878.28	-	103,902.59	-	103,902.59
1,136.65	357.08	-	-	-
14,032.82	-	11,890.15	3,470.54	8,419.61
319,268.12	12,569.11	-	-	-
5,729.47	-	13,270.53	5,809.78	7,460.75
7,509.30	-	77,490.70	-	77,490.70
7,095,219.96	145,393.20	2,571.76	2,571.76	-
107,000.00 1,148,700.59	-	-	-	-
1,612,580.00	-	-	-	-
10,558,156.65	161,096.09	754,062.92	11,852.08	743,100.84
5,729.47	-	13,270.53	5,809.78	7,460.75
10,552,427.18	161,096.09	741,682.39	6,042.30	735,640.09
7,095,396.60	145,750.37	86,071.28	2,571.76	93,500.00
15,878.28	-	103,902.59	-	103,902.59
107,000.00 1,148,700.59	-	-	-	-
252,603.69	-	541,706.04	3,470.54	538,237.60
1,612,580.00	-	-	-	-
319,268.12	15,345.72	-	-	-
3,456,030.58	15,345.72	645,610.63	3,470.54	642,140.09
10,552,427.18	161,096.09	741,682.39	6,042.30	735,640.09

SAN DIEGO COUNTY WATER AUTHORITY

FINANCIAL REPORT

Schedule 4
SUMMARY OF CASH RECEIPTS AND DISBURSEMENTS

Year ended June 30, 1968

	Cash balance July 1, 1967	Cash receipts	Cash disbursements	Interfund transfers in	Interfund transfers out	Cash balance June 30, 1968
General fund	\$ 502,488.42	11,066,711.42	10,737,317.89	941,138.36	93,096.20	1,639,704.12
Debt service reserve fund	752,973.42	2,466,745.94	2,196,431.62	321,800.00	566,000.00	758,687.76
Waterworks bonds, 1947, interest and sinking fund	134,679.83	472,410.18	645,418.96	167,450.58	2,000.00	127,121.61
U. S. Government contract fund	14,453.03	1,911,226.87	1,799,689.88	154,664.06	280,954.62	20,959.46
Waterworks bonds, 1957, improvement fund	2,430,156.55	6,224,012.95	6,400,263.03	70,000.00	147,383.02	2,176,733.25
Waterworks bonds, 1957, interest and redemption fund	60,412.76	2,942,642.87	2,730,780.00	12,500.00	200,220.00	84,962.60
Capital improvement fund	578,552.22	3,627,853.51	3,715,635.07	4,500.00	372,656.51	4,562.15
Totals	\$ 4,443,760.64	26,511,514.70	26,183,306.34	1,672,352.96	1,672,352.96	4,801,969.00

Treasury Cash on Deposit June 30, 1968

Demand deposits:	\$ 89,775.88
Southern California First National Bank (Main Office)	
Time deposits:	\$ 1,180,000.00
San Diego Trust and Savings Bank (Main Office)	645,000.00
United States National Bank (Pacific Beach Branch)	780,000.00
Security First National Bank (Fifty-Fourth and El Cajon Branch)	
Southern California First National Bank (Main Office)	1,500,000.00
Bank of America National Trust and Savings Association (La Mesa Branch)	505,000.00
Deposits in transit	4,725,000.00
Less outstanding warrants	53,327.58
Treasury cash, June 30, 1968, as above	4,862,100.88
	80,131.88
	\$ 4,801,969.00

Schedule 5
INVESTMENTS
June 30, 1968

Description	Date acquired	Yield	Maturity date	Par or maturity value	Book value*
U.S. Treasury bonds	1/15/65	4%	2/15/70	\$ 190,000.00	190,000.00
U.S. Treasury bills	11/ 6/67	5.35%	10/31/68	1,215,000.00	1,149,997.50
				\$ 1,405,000.00	1,339,997.50
<u>Distribution by Funds</u>					
General fund				251,705.75	240,057.50
Debt service reserve fund				104,784.90	99,940.00
Waterworks bonds, 1957, improvement fund				1,048,509.35	1,000,000.00
				\$ 1,405,000.00	1,339,997.50

*Approximate market value \$1,383,090.00.

SAN DIEGO COUNTY WATER AUTHORITY

Schedule 6
 BONDS PAYABLE
 June 30, 1968

Description	Date of Interest	Date of Issue	Date of Maturity
Waterworks bonds, 1947	2%	1947	1968-71
Waterworks bonds, 1957	1 1/2-6%	1957	1968-94
Waterworks bonds, 1966			

Bonded debt maturities

Fiscal year	Waterworks bonds, 1947			Principal
	Principal	Interest	Total	
1968-69	\$ 100,000.00	5,000.00	105,000.00	420,000.00
1969-70	100,000.00	3,000.00	103,000.00	480,000.00
1970-71	100,000.00	1,000.00	101,000.00	560,000.00
1971-72	-	-	-	690,000.00
1972-73	-	-	-	770,000.00
1973-74	-	-	-	830,000.00
1974-75	-	-	-	890,000.00
1975-76	-	-	-	970,000.00
1976-77	-	-	-	1,070,000.00
1977-78	-	-	-	1,140,000.00
1978-79	-	-	-	1,195,000.00
1979-80	-	-	-	1,260,000.00
1980-81	-	-	-	1,330,000.00
1981-82	-	-	-	1,400,000.00
1982-83	-	-	-	1,470,000.00
1983-84	-	-	-	1,540,000.00
1984-85	-	-	-	1,620,000.00
1985-86	-	-	-	1,680,000.00
1986-87	-	-	-	1,740,000.00
1987-88	-	-	-	1,815,000.00
1988-89	-	-	-	1,880,000.00
1989-90	-	-	-	1,960,000.00
1990-91	-	-	-	2,040,000.00
1991-92	-	-	-	2,100,000.00
1992-93	-	-	-	2,165,000.00
1993-94	-	-	-	260,000.00
Totals	\$ 300,000.00	9,000.00	309,000.00	33,275,000.00

Waterworks bonds, 1947, dates of maturity
 January 1 - Bonds and interest coupons
 July 1 - Interest coupons only

See notes 4 and 5 to the basic financial statements.

FINANCIAL REPORT

Schedule 6
 BONDS PAYABLE
 June 30, 1968

	Bonds	
	Authorized	Issued
		Outstanding
\$ 2,000,000.00	2,000,000.00	300,000.00
35,000,000.00	35,000,000.00	33,275,000.00
30,000,000.00	-	-

Bonded debt maturities

Waterworks bonds, 1957		Total		
Interest	Total	Principal	Interest	Total
1,254,180.00	1,674,180.00	520,000.00	1,259,180.00	1,779,180.00
1,231,180.00	1,711,180.00	580,000.00	1,234,180.00	1,814,180.00
1,204,580.00	1,764,580.00	660,000.00	1,205,580.00	1,865,580.00
1,176,380.00	1,866,380.00	690,000.00	1,176,380.00	1,866,380.00
1,145,705.00	1,915,705.00	770,000.00	1,145,705.00	1,915,705.00
1,111,505.00	1,941,505.00	830,000.00	1,111,505.00	1,941,505.00
1,078,425.00	1,968,425.00	890,000.00	1,078,425.00	1,968,425.00
1,043,625.00	2,013,625.00	970,000.00	1,043,625.00	2,013,625.00
1,005,600.00	2,075,600.00	1,070,000.00	1,005,600.00	2,075,600.00
963,525.00	2,103,525.00	1,140,000.00	963,525.00	2,103,525.00
918,435.00	2,113,435.00	1,195,000.00	918,435.00	2,113,435.00
870,910.00	2,130,910.00	1,260,000.00	870,910.00	2,130,910.00
825,615.00	2,158,615.00	1,330,000.00	825,615.00	2,155,615.00
778,090.00	2,178,090.00	1,400,000.00	778,090.00	2,178,090.00
727,070.00	2,197,070.00	1,470,000.00	727,070.00	2,197,070.00
673,475.00	2,213,475.00	1,540,000.00	673,475.00	2,213,475.00
617,305.00	2,237,305.00	1,620,000.00	617,305.00	2,237,305.00
557,640.00	2,237,640.00	1,680,000.00	557,640.00	2,237,640.00
495,775.00	2,235,775.00	1,740,000.00	495,775.00	2,235,775.00
431,492.00	2,246,492.00	1,815,000.00	431,492.00	2,246,492.00
364,420.00	2,244,420.00	1,880,000.00	364,420.00	2,244,420.00
294,700.00	2,254,700.00	1,960,000.00	294,700.00	2,254,700.00
222,012.00	2,262,012.00	2,040,000.00	222,012.00	2,262,012.00
146,357.00	2,246,357.00	2,100,000.00	146,357.00	2,246,357.00
68,417.00	2,233,417.00	2,185,000.00	68,417.00	2,233,417.00
8,840.00	268,840.00	260,000.00	8,840.00	268,840.00
19,215,258.00	52,490,258.00	33,575,000.00	19,224,258.00	52,799,258.00

Waterworks bonds, 1957, dates of maturity
 February 1 - Bonds and interest coupons
 August 1 - Interest coupons only

SAN DIEGO COUNTY WATER AUTHORITY

Schedule 7

PROPERTY, PLANT AND EQUIPMENT AND ACCUMULATED DEPRECIATION

Year ended June 30, 1968

	Date acquired	Assets		Balance June 30, 1968
		Balance July 1, 1967	Additions, net of retirement	
First San Diego Aqueduct:				
First pipeline (Authority's share)	12/11/47	\$ 6,807,246.24	-	6,807,246.24
Second pipeline (Authority's share)	2/28/55	8,056,660.61	-	8,056,660.61
Access roads	6/30/55	14,340.65	5,827.26	20,167.91
Rights of way	Various	297,653.41	-	297,653.41
Service connections	Various	360,786.47	535.00	361,321.47
		<u>15,536,687.38</u>	<u>6,362.26</u>	<u>16,543,049.64</u>
Second San Diego Aqueduct:				
First pipeline and improvements	7/ 1/59	33,249,728.94	-	33,249,728.94
Access roads	Various	26,890.87	5,108.55	31,999.42
Rights of way	Various	315,876.04	-	315,876.04
Chlorination station	6/ 8/61	133,464.26	-	133,464.26
Cross connection	6/30/66	3,294,017.21	-	3,294,017.21
Service connections	Various	518,846.49	-	518,846.49
		<u>37,538,823.81</u>	<u>5,108.55</u>	<u>37,543,932.36</u>
La Mesa Sweetwater extension:				
Pipeline	12/31/48	1,449,147.44	-	1,449,147.44
Rights of way	12/31/48	14,139.99	-	14,139.99
Service connections	12/31/48	2,622.04	-	2,622.04
		<u>1,465,909.47</u>	<u>-</u>	<u>1,465,909.47</u>
Fallbrook Oceanside line (note 6):				
Pipeline	12/31/48	737,031.84	(21,070.42)	715,961.42
Rights of way	12/31/48	7,690.02	-	7,690.02
Service connection	1/22/52	195.40	-	195.40
		<u>744,917.26</u>	<u>(21,070.42)</u>	<u>723,846.84</u>
San Diego Headquarters:				
Building and improvements	6/30/58	129,101.82	-	129,101.82
Land	6/30/58	50,000.00	-	50,000.00
		<u>179,101.82</u>	<u>-</u>	<u>179,101.82</u>
Escondido Headquarters:				
Building and improvements	1/26/48	42,095.02	346,498.38	388,593.40
Land	1/26/48	5,351.60	-	5,351.60
		<u>47,446.62</u>	<u>346,498.38</u>	<u>393,945.00</u>
Furniture and fixtures				
Office equipment	Various	11,124.49	13,365.92	24,490.41
Engineering equipment	Various	25,291.24	1,061.80	26,353.04
Automotive equipment	Various	5,744.80	1,277.21	7,022.01
Telemetry equipment	Various	96,910.36	17,440.42	114,350.78
Miscellaneous equipment	Various	15,624.52	-	15,624.52
		<u>36,909.25</u>	<u>6,524.98</u>	<u>43,434.23</u>
		<u>\$ 55,704,491.02</u>	<u>378,569.10</u>	<u>56,083,060.12</u>

See notes 3 and 6 to the basic financial statements.

FINANCIAL REPORT

Schedule 7

PROPERTY, PLANT AND EQUIPMENT AND ACCUMULATED DEPRECIATION

Year ended June 30, 1968

Rate or life	Accumulated depreciation			Cost, less accumulated depreciation June 30,	
	Balance July 1, 1967	Additions, net of retirement	Balance June 30, 1968	1968	1967
100 yrs.	\$ 1,342,563.04	70,630.92	1,413,193.96	5,394,052.28	5,464,683.20
100 yrs.	997,726.26	61,059.04	1,078,787.32	6,977,873.29	7,056,932.33
Not depr.	-	-	-	20,167.91	14,340.65
Not depr.	-	-	-	297,653.41	297,653.41
Various	<u>38,879.43</u>	<u>3,836.73</u>	<u>42,716.16</u>	<u>318,603.31</u>	<u>321,907.04</u>
	<u>2,379,170.75</u>	<u>155,526.69</u>	<u>2,534,697.44</u>	<u>13,008,352.20</u>	<u>13,157,516.63</u>
100 yrs.	2,395,661.52	337,777.68	2,733,439.20	30,516,289.74	30,854,067.42
Not depr.	-	-	-	31,999.42	26,890.87
Not depr.	-	-	-	315,876.04	315,876.04
98 yrs.	8,277.47	1,360.68	9,638.15	123,826.11	125,186.79
93 yrs.	34,718.64	34,718.64	69,437.28	3,224,579.93	3,259,298.57
Various	<u>27,345.32</u>	<u>5,059.92</u>	<u>32,405.24</u>	<u>486,441.25</u>	<u>491,501.17</u>
	<u>2,465,002.95</u>	<u>378,916.92</u>	<u>2,844,919.87</u>	<u>34,699,012.49</u>	<u>35,072,820.86</u>
100 yrs.	273,488.14	14,337.36	287,825.50	1,161,321.94	1,175,659.30
Not depr.	-	-	-	14,139.99	14,139.99
97 yrs.	<u>425.32</u>	<u>27.12</u>	<u>452.44</u>	<u>2,169.60</u>	<u>2,196.72</u>
	<u>273,913.46</u>	<u>14,364.48</u>	<u>288,277.94</u>	<u>1,177,631.53</u>	<u>1,191,996.01</u>
100 yrs.	136,201.62	7,161.45	143,363.07	572,598.35	600,830.22
Not depr.	-	-	-	7,690.02	7,690.02
5 yrs.	<u>195.40</u>	<u>-</u>	<u>195.40</u>	<u>-</u>	<u>-</u>
	<u>136,397.02</u>	<u>7,161.45</u>	<u>143,558.47</u>	<u>580,288.37</u>	<u>608,520.24</u>
50 yrs.	23,671.20	2,932.80	26,604.00	102,497.82	105,430.62
Not depr.	-	-	-	50,000.00	50,000.00
	<u>23,671.20</u>	<u>2,932.80</u>	<u>26,604.00</u>	<u>152,497.82</u>	<u>155,430.62</u>
50 yrs.	11,847.17	765.36	12,612.53	375,980.87	30,247.85
Not depr.	-	-	-	5,351.60	5,351.60
	<u>11,847.17</u>	<u>765.36</u>	<u>12,612.53</u>	<u>381,332.47</u>	<u>35,599.45</u>
Various	10,575.72	1,529.26	12,104.98	12,385.43	548.77
Various	13,804.57	1,776.20	15,580.77	10,772.27	11,486.67
Various	3,238.83	984.52	4,223.35	2,796.66	2,505.97
Various	58,274.19	12,302.47	70,576.66	43,774.12	38,636.17
10 yrs.	56.00	168.00	224.00	15,400.52	15,588.52
Various	<u>21,085.34</u>	<u>3,852.89</u>	<u>24,938.23</u>	<u>20,486.00</u>	<u>15,823.91</u>
	<u>5,396,037.20</u>	<u>580,291.04</u>	<u>5,978,328.24</u>	<u>50,104,731.88</u>	<u>50,306,453.82</u>

SAN DIEGO COUNTY WATER AUTHORITY

COMMENTS

The San Diego County Water Authority was organized June 9, 1944 under the California County Water Authority Act. The Authority was originally created for the primary purpose of providing and maintaining means of transporting Colorado River water to its member agencies. The San Diego County Water Authority is a member agency of the Metropolitan Water District.

The debt service funds and the debt service reserve fund unappropriated balances are usually at their highest levels as of June 30 each year. Debt service cash requirements are quite substantial prior to the time the Authority begins receiving its tax receipts. Examples of monthly debt service requirements are as follows:

<u>Description</u>	<u>Month</u>	<u>Approximate amount required</u>
Waterworks bonds, 1957, interest	July	\$ 627,000
U.S. Government contract, payments net of Metropolitan Water District share	August	75,000
"	September	62,000
"	November	75,000
"	December	62,000
Waterworks bonds, 1947:		
Interest	December	3,000
Principal	December	<u>100,000</u>
Total debt service cash requirements for July through December		<u>\$ 1,004,000</u>

The Authority receives substantial tax receipts during December and January and again during April and May.

Although the cash requirements relate to debt service, and the primary purpose of the debt service reserve fund is to provide a cash reserve pending receipt of taxes, the debt service reserve fund may also be required to finance, temporarily, operating expenses and the purchase of water.

Following is a description of the functions, restrictions and uses of each of the San Diego County Water Authority funds:

General Fund

This fund was created to be available for the financing of current operations, maintenance, purchases of water from the Metropolitan Water District and construction of service connections. The principal revenue of the fund is from a surcharge of \$1.25 per acre foot paid by each agency over the cost of the water purchased.

FINANCIAL REPORT

The capital improvement fund was combined with the general fund as of June 30, 1968, as explained in note 7 of the notes to financial statements. Beginning July 1, 1968, the general fund will receive the special taxes and other payments resulting from the terms and conditions of annexation of any area to the San Diego County Water Authority. Formerly these amounts were paid into the capital improvement fund.

Debt Service Reserve Fund

This fund was established as a permanent revolving fund in an amount not to exceed \$900,000. The fund is required to provide resources pending the collection of taxes. The resources of the fund may be used for the following purposes:

1. Payment of current debt service requirements and expenses of the Authority, if required.
2. Payment of water purchases prior to collection of the charges for water delivered to our member agencies.
3. Immediate repairs to, or reconstruction of, any part of the Authority system in the event of damage or partial destruction thereto from unpredictable causes, which interrupt or threaten to interrupt the continuous flow of water to the member agencies of the Authority.

Waterworks Bonds, 1947, Interest and Sinking Fund

This fund is used to service the \$2,000,000 bond issue authorized and sold in 1947. Revenues are derived from taxes and interest earnings. In order to comply with the County Water Authority Act, a sinking fund reserve was established.

U.S. Government Contract Fund

This fund was established to service the debt to the U.S. Government for construction of the first and second pipelines of the First San Diego Aqueduct acquired by Lease and Purchase Contract No. 13300.

Revenues of this fund include tax collections and receipts from the Metropolitan Water District for its share of construction costs pursuant to the purchase agreement for the northerly section of the aqueduct within San Diego County.

Waterworks Bonds, 1957, Improvement Fund

This fund was established to receive all monies obtained through the sale of the 1957 series of waterworks bonds.

The resources of this fund may be used for improvements to the Authority system as authorized by the bond election. Current and proposed projects relate to construction of the second pipeline of the Second Aqueduct for which preliminary studies are now being made.

Waterworks Bonds, 1957, Interest and Redemption Fund

This fund was established to provide monies to redeem the 1957 waterworks bond issue. Revenues of the fund are primarily from taxes.

SAN DIEGO COUNTY WATER AUTHORITY

FINANCIAL REPORT

Table F-2

ASSESSED VALUATIONS AND TAX RATES

Fiscal years 1945-46 to 1967-68

Fiscal year	Secured property	Public utilities	Unsecured property	Total	Tax rate per \$100	
					Secured	Un-secured
1945-46	\$ 212,082,975	28,253,700	29,960,130	270,296,805	0.04	-
1946-47	208,715,150*	29,433,450	30,665,910	268,814,510	0.04	0.04
1947-48	233,579,990	32,740,660	40,977,850	307,298,500**	0.14	0.04
1948-49	254,227,570	37,482,020	47,177,300	338,886,890	0.14	0.14
1949-50	290,351,875	42,429,140	45,743,200	378,524,215	0.10	0.14
1950-51	306,104,930	43,595,730	44,717,740	394,418,400	0.10	0.10
1951-52	344,620,030	48,452,940	50,904,035	443,977,005	0.10	0.10
1952-53	382,948,860	53,208,220	63,996,530	500,153,610	0.12	0.10
1953-54	480,709,350	63,082,050	69,147,150	612,948,550	0.10	0.12
1954-55	546,272,800	69,243,530	79,629,790	695,146,220	0.10	0.10
1955-56	627,062,900	87,485,390	79,936,450	794,484,600	0.09	0.10
1956-57	660,824,400	101,224,260	97,950,600	859,999,260	0.09	0.09
1957-58	761,088,530	111,151,690	128,785,440	1,001,025,660	0.09	0.09
1958-59	865,285,080	128,479,290	128,124,720	1,121,889,090	0.10	0.09
1959-60	979,491,050	145,317,290	134,848,730	1,259,657,070	0.11	0.10
1960-61	1,116,723,830	165,686,720	158,954,740	1,441,365,290	0.11	0.11
1961-62	1,220,610,610	191,276,650	155,149,890	1,567,037,150	0.11	0.11
1962-63	1,272,506,330	201,245,370	154,969,440	1,628,721,140	0.11	0.11
1963-64	1,340,197,170	209,793,790	159,714,930	1,709,705,890	0.11	0.11
1964-65	1,423,375,590	213,352,470	161,696,520	1,798,424,580	0.11	0.11
1965-66	1,511,967,750	212,805,040	165,417,220	1,879,900,010	0.11	0.11
1966-67	1,567,290,460	212,223,580	147,740,730	1,927,254,740	0.11	0.11
1967-68	1,735,209,870	209,136,160	178,641,120	2,122,987,150	0.10	0.11

*City of Coronado secured assessed valuations not included in this or subsequent tax levies by the Authority, having withdrawn from the Authority prior to 1946-47.

**City of Coronado not included in this or subsequent total valuation.

Table F-1

TAX ASSESSMENTS AND COLLECTIONS

BY SOURCE AGENCY

Fiscal years 1945-46 to 1967-68

	Tax assessments in \$100's	Adjustments to tax assessments	Tax collections	Interest and penalties	Tax on delinquent accounts	Receipts from sales	Miscellaneous taxes	Less refunds	Net total collections	Overlaid at June 30, 1968
Bellevue Public Utility District	\$ 209,037.34	(284.55)	623,283.85	877.00	12	3,425.09	41.15	31.13	207,988.53	853.84
Bellevue Irrigation District	2,422,864.42	(2,786.22)	2,628,476.31	7,083.38	89.08	4,733.67	679.40	871.40	2,629,265.14	9,941.69
City of Escondido	602,555.43	(747.43)	620,837.81	1,437.42	8.39	6,233.67	83.26	545.93	620,081.34	1,977.70
City of San Diego	446,140.48	(74.72)	642,698.27	1,364.20	5.11	1,664.63	95.31	492.18	642,228.08	2,375.05
City of Bonaville	15,124,033.09	897.70	15,125,089.25	24,383.51	42.25	15,351.62	2,339.21	43,370.87	15,125,428.81	31,463.54
San Marcos Municipal Water District	126,676.63	273.70	229,127.45	384.83	-	4,800.02	1,073.12	744.12	229,688.14	780.03
San Marcos Irrigation District	269,698.09	1,232.28	229,735.42	1,345.73	3.88	1,128.05	183.83	874.18	229,034.22	1,209.84
San Miguel Irrigation District	387,639.32	(32.48)	325,979.82	977.71	-	15.63	88.84	60.47	325,492.62	2,606.47
City of Escondido	446,023.49	237.28	445,886.18	1,064.02	-	13.63	130.21	12,638.58	445,379.04	2,886.08
South Bay Irrigation District	1,525,215.87	(3,844.54)	1,521,452.81	2,511.89	39	14,761.63	130.21	12,638.58	1,521,452.81	2,372.70
Salmon Municipal Water District	120,423.64	(293.71)	229,943.37	293.21	-	21,079.97	72	14.08	120,423.64	5,841.63
Poway Municipal Water District	139,676.48	(199.35)	154,131.26	975.70	-	15.02	4.88	35.44	139,676.48	5,841.63
Bonco Colorado Municipal Water District	799,851.97	1,837.94	798,084.90	1,169.37	1.79	15,797.11	112.94	841.79	799,023.16	4,338.11
Mineral Wells Municipal Water District	312,866.12	624.26	311,699.44	639.31	-	46,797.87	1.28	28.87	269,377.71	1,883.04
Carlsbad Municipal Water District	486,207.60	(1,424.78)	484,476.15	642.72	-	33,176.78	9.12	321.70	484,154.35	2,133.87
Valley Center Municipal Water District	124,489.27	74.15	221,174.58	478.78	-	511.39	27.37	6.34	122,187.76	2,329.24
Rio San Diego Municipal Water District	626,266.70	(20.43)	465,454.28	2,444.28	0.3	264.28	127.66	256.43	465,197.85	4,622.27
Day Municipal Water District	596,122.68	(220.35)	283,379.80	622.70	-	1,580.20	42.11	166.83	283,112.97	2,622.41
Citrusvale Municipal Water District	53,649.08	(408.48)	52,240.20	335.97	-	1,580.20	1.26	13.31	54,344.06	559.49
City of Del Mar	124,325.48	1,879.21	254,578.88	437.64	-	3,020.20	-	-	124,325.48	1,287.89
Tulsa Municipal Water District	30,741.03	83.73	30,166.23	81.67	-	1,020.20	-	-	31,166.21	628.72
De Soto Municipal Water District	-	-	-	-	-	530.20	-	-	530.20	-
Total member agencies	\$5,054,137.00	(5,944.25)	24,809,210.24	52,113.52	979.43	317,679.49	4,948.20	19,767.70	25,036,476.18	85,076.54
Suburban areas	4,169.02	29.56	4,198.58	11.42	1.12	166.54	3.42	5.23	4,203.42	-
Grand total	\$ 25,059,241.00	(5,914.69)	24,977,449.22	52,225.00	979.79	317,846.32	4,951.62	19,783.05	25,236,270.62	85,076.54

Table P-3
TAX LEVIES AND TAX COLLECTIONS BY FISCAL YEAR

Fiscal years 1945-46 to 1967-68

Fiscal Year	Tax levies	Collection of current year's taxes during fiscal year	Percentage of levy collected during fiscal year	Adjustments to prior years' levies	Collection of prior years' taxes during fiscal year	Total tax collections	Accumulated delinquent taxes	Ratio of accumulated delinquent taxes to adjusted tax levies
1945-46	\$ 86,131.33	\$ 84,556.51	98.47%	-	-	84,556.51	1,474.82	1.53%
1946-47	107,508.89	104,753.78	96.09	-	1,090.26	105,844.03	2,439.89	2.26
1947-48	388,591.57	381,653.14	97.94	-	1,682.72	383,335.86	5,255.71	1.36
1948-49	474,550.78	459,504.39	96.84	-	5,825.41	465,329.80	17,220.98	3.70
1949-50	401,112.07	382,732.15	95.41	329.58	13,348.35	406,074.70	15,037.32	3.74
1950-51	397,970.51	390,274.43	98.07	373.46	8,217.82	398,492.25	12,904.12	3.24
1951-52	450,426.19	441,242.12	97.97	978.67	7,699.55	448,941.67	15,545.51	3.46
1952-53	584,503.48	585,417.35	96.46	(1,140.34)	12,567.93	597,985.28	10,584.37	1.82
1953-54	658,335.08	640,239.42	96.15	4,213.42	9,942.33	650,181.75	17,131.12	2.62
1954-55	709,878.89	695,700.64	97.96	1,295.13	12,539.30	707,938.94	20,285.50	2.86
1955-56	803,375.25	788,734.28	97.41	(2,089.58)	12,140.64	800,874.80	20,795.97	2.59
1956-57	874,774.45	861,451.68	98.48	576.90	13,056.01	874,517.67	21,540.85	2.46
1957-58	955,006.57	945,443.35	98.08	966.17	12,890.09	958,333.64	29,189.75	3.02
1958-59	1,178,885.91	1,167,255.98	98.17	-	13,347.45	1,170,603.43	36,422.83	3.09
1959-60	1,438,270.69	1,426,277.57	98.05	(5,274.26)	15,547.80	1,441,825.37	42,533.23	2.97
1960-61	1,624,793.50	1,586,169.51	97.63	(6,720.61)	21,503.88	1,607,673.39	50,874.49	3.15
1961-62	1,789,785.54	1,718,575.78	97.44	(2,276.45)	31,477.80	1,750,053.56	62,330.02	3.54
1962-63	1,816,443.25	1,775,932.85	97.77	(3,658.71)	36,134.69	1,812,067.54	61,053.63	3.37
1963-64	1,910,319.05	1,862,873.83	97.54	(2,688.07)	36,525.61	1,899,399.44	70,975.17	3.72
1964-65	2,000,067.78	1,948,453.84	97.44	(6,588.80)	42,599.95	1,991,053.79	79,003.54	3.88
1965-66	2,101,323.56	2,083,032.16	96.76	2,533.88	44,784.42	2,077,816.58	86,714.40	4.69
1966-67	2,154,894.25	2,080,837.08	97.01	(7,154.70)	54,333.39	2,144,970.47	101,573.48	4.73
1967-68	2,375,276.53	2,329,526.51	97.92	(20,224.11)	54,333.39	2,383,859.82	82,073.54	3.47
Totals	\$ 25,078,919.50	\$ 24,494,939.85		\$ (26,229.11)	475,505.40	24,970,465.25		

*Including adjustments of current year's levy.
*Including adjustments to current and prior years' levies.

FINANCIAL REPORT

Table P-4
LEGAL DEBT MARGIN
June 30, 1968

Assessed valuation 1967-68 (Table P-2)		\$ 1,122,997,460.00
Debt limit (1% of assessed valuation)*		318,448,072.80
Amount of debt applicable to debt limits:		
General obligation bonds**:		
1947 waterworks bonds	\$	300,000.00
1957 waterworks bonds, Series A		7,155,000.00
1957 waterworks bonds, Series B		7,160,000.00
1957 waterworks bonds, Series C		7,640,000.00
1957 waterworks bonds, Series D		4,470,000.00
1957 waterworks bonds, Series E		4,625,000.00
Total bonded debt		\$ 33,975,000.00
Contractual obligations:		
To U.S. Government on First San Diego Aqueduct:		
On first pipeline	\$	4,875,000.00
On second pipeline		10,139,048.84
To Metropolitan Water District on annexation charges		14,060,646.69
Total contractual obligations		29,074,695.53
Total gross indebtedness		62,639,695.53
Less portion of fund balances available for debt redemption:		
Waterworks bonds, 1947, interest and sinking fund		128,381.97
U.S. Government contract fund		20,959.46
Waterworks bonds, 1957, interest and redemption fund		37,899.11
		187,240.54
Net indebtedness		62,452,454.99
Legal debt margin		\$ 255,001,624.55

*See, S(7), County Water Authority Act.
**A bond election was held on June 7, 1966 at which time a \$30,000,000 bond issue was approved. These bonds are scheduled to be sold during October 1968.

SAN DIEGO COUNTY WATER AUTHORITY

Table F-5
INSURANCE COVERAGE

June 30, 1968

	Amount or limit	Company
Excess liability, property damage, and products liability	\$ 2,900,000	Harbor Insurance Co.
Select liability, personal injury, property damage, bodily injury, including automobile. Deductible of \$1,000 on property damage liability, except automobiles	100,000	
Medical payments, each payment	2,000	Great American Insurance Co.
Buildings and equipment - Escondido and San Diego	411,400	Great American Insurance Co.
Office block policy - unscheduled office equipment	53,120	Great American Insurance Co.
Chlorination station - optional peril policy	106,000	Great American Insurance Co.
Dwelling - Escondido	12,000	Great American Insurance Co.
Contractor's equipment	54,510	Industrial Indemnity Insurance Company
Automobile - comprehensive, collision \$100 deductible	Actual cash value	Great American Insurance Co.
Official bonds:		
L. R. Buzzell, General Manager and Chief Engineer	25,000	Great American Insurance Co.
H. C. Griffen, Treasurer	25,000	Great American Insurance Co.
Public Employees' blanket bond	50,000	Great American Insurance Co.
Travel accident - employees and directors:		
Death benefits, etc.	50,000	
Medical	5,000	
Aggregate	600,000	Travelers Insurance Company
Workmen's compensation	Statutory	State Compensation Insurance Fund

FINANCIAL REPORT

Table F-4
SAN DIEGO COUNTY WATER AUTHORITY
ANNEXATION CHARGES, ASSESSMENTS AND BALANCE

Area	Date of Annexation	Amount of Annexation Charge	Period of Special Assessments		Special Assessments to 6/30/67	Fiscal Year 1967-68		Remaining Balance of Annexation Charges 6/30/68
			First Year	Last Year		Special Assessments	Tax Rate Assessments 4/1/68	
Annexation Charges Completed to June 30, 1965		\$588,130.00			\$588,130.00	\$	\$	\$
Annexation Charges Outstanding as of June 30, 1968:								
Del Mar, City of	11-23-62	121,200.00	1963-64	1975-76	54,023.81	13,082.81	115	62,583.35
De Luz Heights M. W. D.	6-25-67	7,400.00	1968-69	1977-78	506.00	0	None	6,890.00
Fairbrook P. U. D.	11-24-58	8,500.00	1959-60	1968-69	7,024.83	866.14	56	574.92
Helix I. D.	9-17-59	11,600.00	1960-61	1969-70	8,486.54	1,126.59	157	2,066.87
San Diego Heights Annex	7-23-69	12,600.00	1961-62	1975-76	9,043.73	1,869.26	27	2,656.99
Olivehills M. W. D.	2-11-65	14,000.00	1966-67	1975-76	1,864.09	1,010.03	47	11,182.88
No. 1 Annex of 1963	11-13-67	3,500.00	1968-69	1977-78	0	500.00	Cash	3,000.00
No. 4 Annex of 1967	10-20-68	16,800.00	1961-62	1976-77	10,662.92	1,561.61	56	4,575.47
Olney M. W. D.	9-21-59	4,000.00	1960-61	1969-70	3,167.53	325.41	27	500.00
Peway M. W. D.	5-12-59	3,600.00	1960-61	1969-70	2,074.27	347.79	26	576.03
Rainbow M. W. D.	12-11-67	9,100.00	1968-69	1977-78	0	500.00	Cash	8,600.00
Rancho, M. W. D.	5-29-59	8,000.00	1960-61	1969-70	4,867.24	602.03	67	1,130.03
No. 1 Annex of 1959	11-20-67	8,100.00	1968-69	1977-78	0	500.00	Cash	5,400.00
No. 4 Annex of 1967	11-30-67	1,000.00	1967-68	1967-68	0	1,000.00	Cash	0
Des Pines Park Annex, of 1967	11-6-59	25,300.00	1960-61	1969-70	13,242.76	1,721.43	67	3,335.81
Rio San Diego M. W. D.	10-17-60	87,100.00	1963-63	1970-71	24,820.22	5,303.63	97	56,275.93
No. 2 Annex of 1959	9-18-59	8,400.00	1960-61	1969-70	6,071.61	829.91	56	1,429.28
No. 3 Annex of 1960	12-12-60	3,900.00	1961-62	1970-71	2,433.02	271.22	67	1,095.26
Valley Center M. W. D.	12-4-67	1,500.00	1968-68	1977-78	0	250.00	Cash	1,400.00
No. 1 Annex of 1967	12-4-67	2,700.00	1968-68	1977-78	0	250.00	Cash	2,400.00
No. 2 Annex of 1967	12-16-63	40,700.00	1964-68	1973-74	12,851.51	4,251.31	67	22,547.18
Yuma M. W. D.	11-27-67	6,000.00	1968-69	1977-78	0	300.00	Cash	3,300.00
Total		\$664,360.00			\$739,670.55	\$26,425.27		\$186,133.85

SAN DIEGO COUNTY WATER AUTHORITY

Table F-7

METROPOLITAN WATER DISTRICT ANNEXATION CHARGES, ASSESSMENTS AND BALANCES ON AUTHORITY AREAS.

Member Agencies	Date of Annexation	Period of Special Assessments	
		First Yr.	Last Yr.
Annexation Charges Completed to June 30, 1965	---	---	---
Outstanding as of June 30, 1965			
Chula Vista, City of			
Fallbrook Public Utility District			
Lakeside Irrigation District			
Helix Irrigation District	12-17-46	1947-48	1976-77
National City, City of			
Oceanside, City of			
San Diego, City of			
Buena Colorado M. W. D.	6-11-54	1955-56	1984-85
Carlstad M. W. D.	6-16-54	1955-56	1984-85
Del Mar, City of	11-23-62	1963-64	1992-93
De Luz M. W. D.	6-28-67	1968-69	1997-98
Eaccondillo, City of	10- 9-50	1951-52	1980-81
Fallbrook Public Utility District			
No. 1 Annexation of 1950	6- 1-50	1951-52	1989-91
No. 2 Annexation of 1958	11-24-58	1959-60	1988-89
Helix Irrigation District			
Crest P. U. D. Annexation	12-13-48	1949-50	1978-79
El Cajon Dry Island Annexation	12-20-54	1955-56	1984-85
Helix-Watson Ranch Annexation	2-20-59	1960-61	1989-90
Helix-Sunny Slope Ila. Annexation	9-17-59	1960-61	1989-90
Olivewood M. W. D.	7-25-60	1961-62	1990-91
No. 1 Annexation of 1965	2-11-65	1966-67	1995-96
No. 4 Annexation of 1967	11-16-67	1968-69	1997-98
Okay M. W. D.	10-26-56	1957-58	1986-87
No. 3 Annexation of 1960	10-20-60	1961-62	1990-91
Poway M. W. D.	4-21-54	1955-56	1984-85
No. 1 Annexation of 1959	9-21-59	1960-61	1989-90
Rainbow M. W. D.	4-10-54	1955-56	1984-85
No. 1 Annexation of 1959	5-12-59	1960-61	1989-90
No. 3 Annexation of 1967	12-11-67	1968-69	1997-98
Ramona M. W. D.	8-27-57	1958-59	1987-88
No. 1 Annexation of 1959	5-29-59	1960-61	1989-90
No. 2 Annexation of 1961	9-22-61	1962-63	1991-92
No. 3 Annexation of 1963	9-20-63	1964-65	1993-94
No. 4 Annexation of 1967	11-20-67	1968-69	1997-98
Dos Picos Park Annexation of 1967	11-30-67	1967-68	1967-68
Rincon del Diablo M. W. D.	6-14-54	1955-56	1984-85
Rio San Diego M. W. D.			
(not including Lakeside I. D.)	6- 7-56	1957-58	1986-87
No. 2 Annexation of 1959	11- 8-59	1960-61	1989-90
No. 3 Annexation of 1960	10-17-60	1961-62	1990-91
San Dieguito Irrigation District	12-13-48	1949-50	1978-79
No. 1 Annexation of 1959	9-15-59	1960-61	1989-90
Santa Fe Irrigation District	12-13-48	1949-50	1978-79
South Bay Irrigation District			
(not including City of Chula Vista)	11- 3-62	1963-64	1982-83
Valley Center M. W. D.	5- 9-55	1956-57	1985-86
No. 1 Annexation of 1960	12-12-60	1961-62	1990-91
No. 2 Annexation of 1967	12- 4-67	1968-69	1997-98
No. 3 Annexation of 1967	12- 4-67	1968-69	1997-98
Yuma M. W. D.	12-16-63	1964-65	1993-94
No. 1 Annexation of 1967	11-27-67	1968-69	1997-98
Total			

FINANCIAL REPORT

Table F-7

METROPOLITAN WATER DISTRICT ANNEXATION CHARGES, ASSESSMENTS AND BALANCES ON AUTHORITY AREAS

Amount of Annexation Charge	Special Assessments to 6/30/67	Fiscal Year 1967-68		Remaining Balance 6/30/68
		Special Assessments	Tax Rate \$/ \$100	
\$ 144,659.00	\$ 144,659.00	\$ ---	---	\$ ---
13,045,000.00	8,813,667.98	321,928.47	2	3,909,403.55
1,072,239.08	429,912.47	37,337.73	5	664,979.80
548,100.00	222,132.02	15,703.26	3	310,284.72
611,258.00	81,965.59	20,994.01	17	568,296.40
2,002,000.00	0	0	---	2,002,000.00
388,000.00	207,683.53	11,353.93	4	166,932.54
34,000.00	21,982.91	977.41	3	11,629.68
50,600.00	13,603.97	1,620.53	9	35,175.50
19,000.00	6,374.68	336.99	3	3,788.33
327,450.00	135,210.48	8,061.77	1	184,177.75
8,730.00	2,004.61	320.18	4	6,355.21
38,250.00	8,974.29	1,234.22	12	28,041.49
82,880.00	16,893.04	2,798.86	3	64,188.10
512,520.00	17,173.64	17,144.82	68	478,301.54
74,000.00	0	0	---	74,000.00
273,900.00	83,639.11	9,081.20	2	170,279.69
95,100.00	19,187.72	3,118.95	10	72,801.33
91,800.00	36,878.73	3,284.55	2	51,635.72
27,150.00	6,355.59	997.24	6	19,797.17
167,700.00	67,631.64	6,363.92	3	93,704.44
24,300.00	5,095.06	811.31	7	17,793.63
1,728,000.00	0	0	---	1,728,000.00
320,000.00	102,491.10	11,193.42	12	225,405.43
42,330.00	9,887.49	1,494.68	14	31,037.83
15,480.00	2,588.81	537.65	14	12,353.54
10,560.00	1,079.68	350.54	7	9,129.78
490,000.00	0	0	---	490,000.00
2,000.00	0	2,000.00	Cash	0
757,200.00	206,199.55	24,316.79	5	426,683.66
373,980.00	126,706.30	12,965.88	4	234,307.82
109,110.00	25,462.22	3,715.68	13	79,932.10
289,880.00	58,538.72	9,186.57	14	222,164.71
187,160.00	112,687.23	8,326.57	3	66,086.20
71,820.00	16,895.96	2,362.01	14	52,582.03
167,000.00	161,169.98	5,729.52	2	60,089.50
449,370.00	210,769.25	15,135.93	3	223,464.82
205,680.00	75,608.65	8,585.58	4	121,485.77
23,700.00	4,771.27	603.62	13	18,125.01
22,000.00	0	0	---	22,000.00
502,000.00	0	0	---	502,000.00
740,490.00	74,967.32	24,994.78	47	640,537.90
72,200.00	0	0	---	72,200.00
\$26,227,129.00	\$11,581,450.74	\$565,031.57		\$14,050,646.40

