

SAN DIEGO COUNTY
WATER AUTHORITY



TWENTY-FIRST ANNUAL REPORT
1967

SAN DIEGO COUNTY WATER AUTHORITY
Organized June 9, 1944

TWENTY-FIRST ANNUAL REPORT

OF AUTHORITY OPERATIONS

FOR FISCAL YEAR ENDING JUNE 30, 1967

Linden R. Burzell
General Manager and Chief Engineer

SAN DIEGO, CALIFORNIA
1967

TABLE OF CONTENTS

	Page
BOARD OF DIRECTORS	13
Administration	14
Public Information and Education	14
COMMITTEES OF THE BOARD	8
DESIGN AND CONSTRUCTION	29
Escondido Operations Center	29
Second Pipeline, Second San Diego Aqueduct	30
GROWTH	15
Area	15
Assessed Valuation	18
Population	17
LEGAL DEPARTMENT ACTIVITIES	33
Anti-Trust Suits	33
Annexations	34
Colorado River Projects	34
LETTER OF TRANSMITTAL	11
MEMBER AGENCIES, DATE OF ENTRY AND REPRESENTATIVES	4
METROPOLITAN WATER DISTRICT, MEMBERSHIP IN	34
Assessed Valuation	38
Constituent Member Agencies and Area	37
Tax Rate	39
Water Sales	38
OFFICERS AND BOARD OF DIRECTORS	5
OPERATION AND MAINTENANCE OF AQUEDUCTS	30
Patrol	31
STATISTICAL SUMMARY	9
WATER SUPPLY AND CONSUMPTION	18
Agricultural Water Use	23
Allocation of Water Among Member Agencies	27
Authority Facilities	24
Future Supplies	27
Water Deliveries and Rates	19
Water Production of Member Agencies	20
Water Quality	26
Water Supply and System	18
Water Treatment	26

FIGURES

A. Authority Area Within San Diego County	12
B. Water Production of Authority Member Agencies	22
C. Rainfall Record at San Diego, California	25
D. Composition of The Metropolitan Water District of Southern California	35
E. Water Systems of Metropolitan Water District and San Diego County Water Authority	36

TABLE OF CONTENTS
(Continued)

INDEX OF TABLES

	Table No.	Page
APPENDIX A — STATISTICAL TABLES		
Agricultural Use of Water — Fiscal Year 1966-67	10	52
Allocation of Right to Purchase Authority Water	13	55
Analysis of Colorado River Aqueduct Water	16	58
Area — Authority Member Agencies	1	42
Assessed Valuations — Authority Member Agencies and County	4	45
Assessed Valuations and Tax Rates of the Metropolitan Water District	17	59
Authority Storage in San Vicente Reservoir	11	53
Chemical Character of Natural Colorado River Water	12	54
Population — Authority Member Agencies and County	3	44
Population Growth — County and Authority Area	2	43
Sales of Colorado River Water — Fiscal Year 1966-67	5	46
Unit Water Production — Per Acre and Per Capita 1966-67	9	51
Water Production — Metropolitan Water District Constituent Areas	15	57
Water Production of Authority Agencies — Fiscal Year 1966-67	8	50
Water Production of Authority Agencies: Fiscal Years 1957-58 to 1966-67	7	49
Water Sales — 1947-67	6	48
Water Sales by Metropolitan Water District	14	56

APPENDIX B — FINANCIAL REPORT

Annexation Charges, Assessments and Balances	87
Appropriations and Expenditures	72
Assessed Valuations and Tax Rates	83
Auditor's Report	61
Balance Sheet	62
Bonds Payable	76
Changes in Reserves and Surplus	64
Comments	80
Insurance Coverage	86
Investments	75
Legal Debt Margin	85
Letter of Transmittal	60
Metropolitan Water District Annexation Charges, Assessments and Balances on Authority Areas	88
Notes to Financial Statements	67
Operating Expense	70
Property, Plant and Equipment	78
Revenue	71
Revenue and Expense	66
Summary of Cash Receipts and Disbursements	74
Tax Assessments and Tax Collections	82
Tax Levies and Tax Collections	84

SAN DIEGO COUNTY WATER AUTHORITY

*Member Agencies, Date of Entry, and
Representatives on Board of Directors on June 30, 1967*

CITIES

Del Mar		Nov. 23, 1962
O. B. Sholders		
Escondido		Oct. 9, 1950
Lloyd M. Mitchell		
National City		June 9, 1944
Charles G. Kerch		
Oceanside		June 9, 1944
Robert A. Weese		
San Diego		June 9, 1944
Baylor Brooks	Fred A. Heilbron	H. Fred Landgraf
David S. Casey	Gaylord Henry	Fred W. Simpson
John M. Cranston	Mrs. Edith Kamm	Arthur C. Wells
R. E. Graham	George Kerrigan	

IRRIGATION DISTRICTS

Helix		June 9, 1944
Michael Fletcher, Harry Griffen, M. J. Shelton		
San Dieguito		Dec. 13, 1948
Frank J. Cermak		
Santa Fe		Dec. 13, 1948
R. E. Badger		
South Bay		Nov. 3, 1952
Lloyd L. Lee, Walter L. Steele		
<i>(Includes City of Chula Vista, an independent member agency, from June 9, 1944, to Nov. 3, 1952)</i>		

MUNICIPAL WATER DISTRICTS

Bueno Colorado		June 11, 1954
Hans H. Doe		
Carlsbad		June 16, 1954
Allan O. Kelly		
De Luz Heights		June 28, 1967
<i>Director Appointment Pending June 30, 1967</i>		
Olivenhain		July 25, 1960
Howard G. Golem		
Otay		Oct. 26, 1956
Ralph W. Chapman		
Poway		April 21, 1954
David R. Shephardson		
Rainbow		April 10, 1954
Walter R. Beck		
Ramona		August 27, 1957
John E. Langan		
Rincon del Diablo		June 14, 1954
Charles A. Crytser		
Rio San Diego		June 7, 1956
Charles C. Price		
<i>(Includes Lakeside I. D., an independent member agency from June 9, 1944 to June 7, 1956)</i>		
Valley Center		May 9, 1955
Cartwright Smith		
Yuima		Dec. 16, 1963
E.W. Blom		

PUBLIC UTILITY DISTRICT

Fallbrook		June 9, 1944
Franz R. Sachse		

OFFICERS OF BOARD OF DIRECTORS



Chairman
FRED A. HEILBRON
San Diego
7-44 to 6-67



Vice Chairman
R. E. BADGER
Santa Fe
Irrigation District
9-57 to 6-67



Secretary
HANS H. DOE
Bueno Colorado
Municipal Water District
6-54 to 6-67



Treasurer
HARRY GRIFFEN
Helix
Irrigation District
7-56 to 6-67



Controller
HOWARD G. GOLEM
Olivenhain Municipal
Water District
1-62 to 6-67

EXECUTIVE OFFICERS



LINDEN R. BURZELL
General Manager and
Chief Engineer



W. H. JENNINGS
General Counsel

ADMINISTRATIVE STAFF



ALLEN H. JONES
Assistant Chief
Engineer



HENRY LOZANO
Chief Accounting
Officer



JOSEPH E. LESTER
Superintendent



LINDA K. DeGROOT
Executive Secretary

BOARD OF DIRECTORS

1966-67

For Officers, See Page 5



WALTER R. BECK
Rainbow Municipal
Water District
9-62 to 6-67



E. W. BLOM
Yuima Municipal
Water District
1-64 to 6-67



BAYLOR BROOKS
San Diego
5-54 to 10-60
4-62 to 6-67



DAVID S. CASEY
San Diego
5-66 to 6-67



FRANK J. CERMAK
San Diego
Irrigation District
7-66 to 6-67



RALPH W. CHAPMAN
Otay Municipal
Water District
1-64 to 6-67



JOHN M. CRANSTON
San Diego
10-64 to 6-67



CHARLES A. CRYTSEK
Rincon del Diablo
Municipal Water District
6-54 to 6-67



MICHAEL FLETCHER
Helix
Irrigation District
10-63 to 6-67



R. E. GRAHAM
San Diego
7-63 to 6-67



GAYLORD L. HENRY
San Diego
11-64 to 6-67



MRS. EDITH KAMM
San Diego
8-65 to 6-67



ALLAN O. KELLY
Carlsbad Municipal
Water District
11-63 to 6-67



CHARLES G. KERCH
National City
5-57 to 8-65
7-66 to 6-67



GEORGE KERRIGAN
San Diego
9-53 to 6-67

BOARD OF DIRECTORS

1966-67

(Continued)



H. FRED LANDGRAF
San Diego
10-55 to 6-67



JOHN E. LANGAN
Barona Municipal
Water District
4-61 to 6-67



LLOYD L. LEE
South Bay
Irrigation District
4-61 to 6-67



LLOYD M. MITCHELL
Escondido
12-56 to 6-67



CHARLES C. PRICE
Rio San Diego
Municipal
Water District
7-58 to 6-67



FRANZ R. SACHSE
Fallbrook Public
Utility District
7-49 to 12-50
10-56 to 6-67



M. J. SHELTON
Helix
Irrigation District
2-48 to 6-56
10-65 to 6-67



DAVID R. SHEPARDSON
Paway Municipal
Water District
4-54 to 6-67



O. B. SHOLDERS
Del Mar
4-63 to 6-67



FRED W. SIMPSON
San Diego
7-44 to 6-67



CARTWRIGHT SMITH
Valley Center
Municipal Water District
3-65 to 6-67



WALTER L. STEELE
South Bay
Irrigation District
9-62 to 6-67



ROBERT A. WEESE
Oceanside
3-53 to 6-67



ARTHUR C. WELLS
San Diego
2-53 to 6-67

COMMITTEES OF THE BOARD

June 30, 1967

Engineering and Operations Committee

Robert A. Weese, *Chairman*
Baylor Brooks, *Vice Chairman*
R. E. Badger
F. W. Blom
Frank J. Cermak
Ralph W. Chapman
Hans H. Doe
Howard G. Golem
R. E. Graham
Allan O. Kelly
Lloyd L. Lee
M. J. Shelton
Oliver B. Sholders

Organization and Personnel Committee

Fred W. Simpson, *Chairman*
David R. Shepardson, *Vice Chairman*
Frank J. Cermak
Ralph W. Chapman
Michael Fletcher
Howard G. Golem
Charles G. Kerch
John E. Langan
Charles C. Price
Cartwright Smith
Robert A. Weese

Legal and Claims Committee

Franz R. Sachse, *Chairman*
David R. Shepardson, *Vice Chairman*
Walter R. Beck
John M. Cranston
Gaylord L. Henry
Mrs. Edith Kumm
Allan O. Kelly
Charles G. Kerch
George Kerrigan
H. Fred Landgraf
Walter L. Steele
Arthur C. Wells

Public Education and Information Committee

Lloyd M. Mitchell, *Chairman*
Hans H. Doe
R. E. Graham
Harry Griffen
Fred A. Heilbron
Lloyd L. Lee

Water Problems and Policy Committee

Hans H. Doe, *Chairman*
R. E. Badger, *Vice Chairman*
Baylor Brooks
David S. Casey
John M. Cranston
Charles A. Crytser
R. E. Graham
Harry Griffen
Fred A. Heilbron
Lloyd L. Lee
Lloyd M. Mitchell
Franz R. Sachse
Fred W. Simpson
Cartwright Smith

Finance and Insurance Committee

Arthur C. Wells, *Chairman*
Harry Griffen, *Vice Chairman*
Walter R. Beck
E. W. Blom
David S. Casey
Charles A. Crytser
Michael Fletcher
Gaylord L. Henry
George Kerrigan
H. Fred Landgraf
John E. Langan
Lloyd M. Mitchell
Charles C. Price
M. J. Shelton
Oliver B. Sholders
Walter L. Steele

Lands and Rights of Way Committee

Lloyd M. Mitchell, *Chairman*
Lloyd L. Lee, *Vice Chairman*
Harry Griffen
Charles G. Kerch
H. Fred Landgraf
Franz R. Sachse
David R. Shepardson

Administrative Code Committee

Charles C. Price, *Chairman*
Harry Griffen
Mrs. Edith Kumm
Lloyd L. Lee

STATISTICAL SUMMARY

	1966 - 67	1965 - 66	Percent Change
GROWTH OF AREA			
Number of Agencies	22	21	+ 4.8
Total Area—Acres	730,932	719,787	+ 1.5
Population	1,190,000	1,175,000	+ 1.3
Assessed Valuation	\$1,927,254,740	\$1,879,990,010	+ 2.5
OPERATIONS			
Water Imported by Authority—ac. ft.	206,273	218,813	- 5.7
Water Production of Agencies—ac. ft.	256,044	258,719	- 1.0
Local Water Used—ac. ft.	55,862	34,732	+ 60.8
Authority Water Used—ac. ft.	200,182	223,987	- 10.6
Miles of Pipe Line	167	167	0
Miles of Patrol Roads Maintained	94	92	+ 2.2
Number of Service Connections	52	52	0
FINANCIAL			
Revenues:			
Water Revenue	\$ 5,628,375	\$ 5,408,956	+ 4.1
Other Revenue	881,156	830,641	+ 6.1
Taxes	2,144,048	2,077,297	+ 3.2
Expenditures:			
Operation and Maintenance	\$ 292,909	\$ 246,140	+ 19.0
Purchase of Water	5,458,738	5,144,427	+ 6.1
Payments on Outstanding Debt	1,329,030	1,299,030	+ 2.3
Total Investment in Plant:			
Total Fixed Assets	\$ 110,767,477	\$ 104,842,964	+ 5.7
Long-term Debt	61,672,956	61,709,261	- 0.1



October 31, 1967

Board of Directors
San Diego County Water Authority

Gentlemen:

The Twenty First Annual Report of the Authority covering activities during the fiscal year ending June 30, 1967, has been prepared and is transmitted herewith.

The aqueducts operated and maintained by the Authority remain in excellent condition and are fully capable of providing all of the demands for imported Colorado River Water as forecast by the member agencies until the year 1970 or later. The construction schedule for completion of the next increment, 10.6 miles of the Second Pipeline of the Second San Diego Aqueduct to San Marcos, provided for 380 c.f.s. of additional capacity by 1970.

Metropolitan Water District's plans for its portion of the new aqueduct also are proceeding on schedule including all facilities necessary to convey State Project Water to San Diego as soon as it becomes available at the Perris Reservoir site in 1972. Facilities which are now in the design stage are being planned to meet the needs of Authority until about the year 1990.

Very truly yours,

Linden R. Burzell
LINDEN R. BURZELL
General Manager and
Chief Engineer

Authority engineers processing design work on MWD portion of the Second San Diego Aqueduct from Auld Valley to a point six miles south of the San Diego County line. Estimated cost of this project exceeds \$20 million.

Education and Information, and Administrative Code. Directors are appointed to committees by the Chairman of the Board. Membership of each of the standing committees is shown on page 8 of this report. As special problems arise, special committees are appointed to meet the needs.

In July Mr. Charles G. Kerch succeeded Mr. Richard Gautereaux as the Water Authority director representing National City; Mr. Frank J. Cermak succeeded the late Mr. Charles W. Hales as the Water Authority director representing the San Dieguito Irrigation District; Mr. Allan O. Kelly was reappointed as the Water Authority director representing the Carlsbad Municipal Water District.

In August Mr. Howard G. Golem was reappointed as the Water Authority director representing the Olivenhain Municipal Water District.

In December Mr. R.E. Badger was reappointed as the Water Authority director representing the Santa Fe Irrigation District.

Mr. Baylor Brooks and Mr. John Cranston were reappointed as two of the Water Authority directors representing the City of San Diego in February, 1967.

Administration

The Water Authority employed a staff of 40 during the fiscal year. Twenty-one members of the total Water Authority staff serve in administration, engineering, financial, operation, maintenance, stenographic and clerical positions, and 19 serve in new project engineering design, surveying and inspection capacities at the San Diego headquarters and Escondido operations center.

During the fiscal year, recognition was given L.R. Burzell for 3 years of Water Authority service; Allen H. Jones and Cassie M. Pettry for 15 years' service; Donald A. Bandick, Hamilton Temple and C.W. Blankenship for 10 years' service; Gerald W. Watkins for 6 years' service; and Joseph E. Lester and Jess T. Quaid for 20 years of service to the Water Authority.

Public Information and Education

Appearances by Water Authority representatives before community organizations, civic groups, schools and public bodies continued on an increasing scale following policy recommendations of the Public Information and Education Committee. Such appearances stress specific Water Authority operations as related to given areas and include general description of the history and purpose of the San Diego County Water Authority, the water supply from the Colorado River and the future additional supply from Northern California.

The Water Authority provided a preface recounting its history and development for a Western Management, Inc., study of the economic impact of imported water on San Diego County and published a brochure entitled "Water in San Diego County" for general distribution by the Water Authority and member agencies. The brochure presented much of the material from the Western Management study in digest form.

Each of the three Water Authority directors representing the Water Authority on the board of directors of The Metropolitan Water District of Southern California (CWA board Chairman Heilbron and Directors Doe and Griffen) continued to sponsor weekend trips over Water Authority and MWD aqueduct and reservoir systems with overnight stays at Gene Camp on the Colorado River. A significant number of business and civic leaders continue to seek opportunities to take these informative weekend trips.

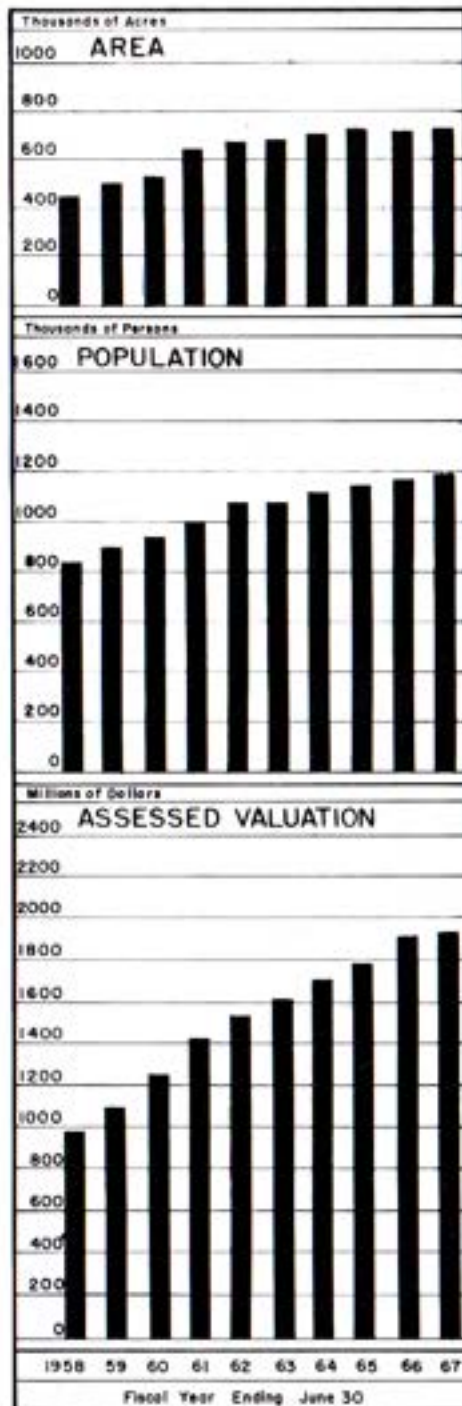
Representatives of the Water Authority participated in the reconvened Hawaiian session of the American Water Works Association in October, and the A.W.W.A. annual meeting in Atlantic City in June, as well as the Irrigation Districts Association Sacramento convention in April and the annual conference of Municipal Finance Officers Association at Chicago in June.

GROWTH

Area

The area of the Authority increased during the fiscal year. Annexations to member agencies and the resulting change in boundaries increased the total acreage within the Authority by 11,145 acres. As of June 30, 1967, a total of 730,932 acres or 1142 square miles were included within the Authority. Ninety two percent of the total population of San Diego County reside within the San Diego County Water Authority.

De Luz Heights Municipal Water District, a 10,280-acre community with a population of 100 and an assessed valuation of \$538,000, became the Water Authority's twenty-second member agency on June 28, 1967. De Luz Heights, a generally undeveloped area, was formed as a Municipal Water District on October 15, 1962. In an election on May 9, 1967, voters in De Luz Heights approved the annexation of their district to the San Diego County Water Authority and The Metropolitan Water District of Southern California. The annexation measure approved by De Luz Heights voters on May 9 authorized payment of an annexation fee to MWD totalling \$2,002,000 payable at a maximum tax rate of 75c per \$100 assessed valuation and an additional annexation fee to the San Diego County Water Authority of \$7,400. The new member agency, located northwesterly and adjacent to the Fallbrook Public Utility District and south of the Riverside County Line, is the first new CWA member agency since 1963, when Yuima Municipal Water District, became the twenty-first member agency.



The boundaries of the Authority now encompass 27 percent of the area within San Diego County and 80 percent of all that area lying between the Cleveland National Forest and the Pacific Ocean as shown on Figure A.

Overlapping areas continue to exist in the Authority although efforts are being made to encourage member agencies to eliminate overlapping boundaries through appropriate action.

An overlapping area is land lying within the boundaries of two member agencies. The overlapping portion having been originally in one agency and subsequently annexed by the other, which was better able to serve the area with water. The major overlapping areas are due primarily to the expansion of cities into areas already within other member agencies of the Authority.

At the present time 15,883 acres lie within cities which overlap portions of adjacent member agencies. The Authority Act provides means to correct an overlapping area by exclusion from one agency, or an area may be concurrently excluded from one agency and annexed to another by mutual consent, without the area being excluded from the Authority or the Metropolitan Water District, provided permission to do so is first obtained from the Authority.

The area within each member agency, the changes which have occurred therein during the past year, and the percentage of each agency's area to that of the entire Authority are shown in Table 1. As shown in this table, the City of San Diego continues to have the largest area, equal to 26.64 percent of the total area within the boundaries of the Authority.

The following annexations to existing member agencies have been informally approved by the Authority Board of Directors: Rainbow No. 3 Concurrent Annexation, consisting of a revised area of 8,630 acres contiguous to and lying easterly of the present district boundaries, directly south of the Riverside County line; Valley Center Municipal Water District No. 2 and No. 3 Concurrent Annexations, consisting of 2,500 and 100 acres respectively, contiguous to and lying easterly of Valley Center Municipal Water District; Olivenhain No. 4 Concurrent Annexation, consisting of 360 acres contiguous to and lying south of the District; Yuima No. 1 Concurrent Annexation, consisting of four parcels contiguous to the District and having an area of 351 acres; Ramona No. 4 Concurrent Annexation and Ramona Dos Picos Concurrent Annexation, consisting of 2393 and 79 acres respectively, contiguous to the District.

The Authority's 1966 Statement of Change of Boundaries, under state law required to be filed by the Executive Secretary of the Board of Directors prior to January 1, 1967, was filed with the State Board of Equalization December 28, 1966, the County of San Diego December 28, 1966, and The Metropolitan Water District of Southern California December 28, 1966. As shown on the Statement, there were 25 changes made during the year, none of which changed the boundaries of the Authority either by annexation or by exclusion. This Statement is the basis for determination of the assessed valuation by the Assessor of San Diego County who levies the Authority tax rate as established in August by the Authority Board of Directors.

Population

The population within the Authority area continued to expand at a steady but slightly lower rate than the average rate of growth during the last five years. The population census figures for each decade beginning in 1910, together with the estimated population for the years 1961 through 1967, are shown in Table 2. Data pertaining to individual member agencies are shown in Table 3.

The City of San Diego continues to be the most populous member agency and now contains 670,300 persons or 56 percent of the total residing within the Authority. The De Luz District has the smallest population. The City of La Mesa continues to be the most densely populated area within the Authority with 7.51 persons per acre. The cities of National City and El Cajon have densities of 6.68 and 6.31, respectively.

The average population per acre of the Authority has increased 3 percent during the past seven years to 1.63 persons per acre or 1,042 persons per square mile.

Assessed Valuation

The Authority maintains a record of boundary changes. A Statement of Change of Boundaries is filed annually with the Assessor of San Diego County. The Assessor determines the assessed valuation of all taxable property lying within the Authority boundaries. This assessed valuation becomes the basis for the Authority's tax levy. The Auditor of the County certified to the Authority that the assessed valuation of taxable property for the 1966-67 tax levy was \$1,927,254,740, an increase of \$47,264,730 or 2.5 percent over 1965-66. The assessed valuation of taxable property of each member agency of the Authority is shown in Table 4. Prior to the compilation of this report, the assessed valuation for 1967-68 was received and has been included in Table 4 for convenience. This table shows that the assessed valuation of taxable property within the boundaries of the Authority increased by \$195,732,410 or 10.2 percent. The average assessed valuation for the Authority increased from \$2,678 per acre in 1966-67 to \$2,904 per acre in 1967-68.

WATER SUPPLY AND CONSUMPTION

Water Supply and System

The San Diego County Water Authority continued to receive its entire supply of water from the Colorado River through the facilities of the Metropolitan Water District of Southern California. At the present time, the Authority has a preferential right to the District's water supply of about 8 percent. This preferential right results from payments in the form of taxes and annexation charges paid to Metropolitan Water District. Payments for water to the District are not included in the calculation of preferential right. The Metropolitan Water District distributed water throughout the year on the basis of requirements and did not invoke preferential right as the basis for water deliveries.

Metropolitan Water District diverts Colorado River water into the San Diego Aqueduct near San Jacinto. The Water Authority accepts the delivery at a point approximately six miles inside San Diego County. The First Aqueduct has a reservoir at the northerly end where approximately 1,400 acre feet can be stored. There is no storage on the Second San Diego Aqueduct; however, Auld Valley Reservoir site, located in Southern Riverside County, has been acquired by the Metropolitan Water District. When completed, it is anticipated that up to 36,000 acre feet of water will be stored in this Southern Riverside County reservoir located at the southerly end of the canal section which has a capacity of 1,000 cubic feet per second.

Capacity of the First San Diego Aqueduct is 196 c.f.s. and the Second San Diego Aqueduct has a nominal capacity of 250 c.f.s. The three months of highest flow in the two aqueducts were July, August and September, 1966, with average flows of 382,395, and 346 c.f.s., respectively. As aqueduct flow nears capacity during the peak summer period, it will be necessary for Authority's member agencies to rely on storage to a greater and greater extent until the second pipeline to the Second San Diego Aqueduct is completed.

The total flow in the Authority's system was 206,273 acre feet as compared with 218,813 acre feet during the previous year. The annual flow amounted to 64 percent of the maximum of 320,000 acre feet which could be delivered assuming continuous operation of both aqueducts at capacity for the entire year.

The lowest rate of flow occurred in March, 1967 as a consequence of heavy rainfall. Aqueduct flow was 9,626 acre feet in March, 1967. Maximum monthly flow occurred in August of 1966 with delivery of 24,291 acre feet.

Water Deliveries and Rates

Water deliveries to all member agencies are shown in Table 5. The agencies purchased 202,532 acre feet during the year; an additional 4,372 acre feet was placed in Authority storage, and 17,178 acre feet was stored by Metropolitan. Member agencies withdrew from storage a total of 3,742 acre feet. Based on the year's experience, aqueduct carrying capacity remains ample to meet member agencies' expanding requirements for several years.

The quantities of water delivered to individual member agencies for the eight-year period from 1959 to 1967 are shown in Table 6, together with the total quantity of water purchased by each agency since the Authority first began delivery of water in 1947. This year's sales were less than 1965-66 by 4.9 percent.

The Authority continues to deliver water to two governmental projects for Metropolitan Water District. These are the State Forestry Camp located east of Rainbow within the proposed Rainbow Concurrent Annexation No. 3 and the Convair Missile Testing Facility in Sycamore Canyon on the Camp Elliott Reservation. The total quantity of water delivered under these contracts was 32 acre feet, compared with 73 acre feet in the previous year.

The Water Authority charge for water is the rate charged by Metropolitan Water District plus a surcharge of \$1.25 per acre foot. Prior to September 1, 1964, the surcharge was \$2.00 per acre foot. In August, 1964, the Board of Directors of the Authority adopted a resolution which reduced the rate to \$1.25 which is sufficient presently to pay all Authority costs except capital cost.

SAN DIEGO COUNTY WATER AUTHORITY

The Metropolitan Water District maintains a policy of announcing its water rates for approximately three years in advance. During recent years, Metropolitan has increased its water rates each year, and further annual increases are scheduled. A summary of County Water Authority water rates for untreated Colorado River water supplied to Authority members since July 1, 1958, follows:

SUMMARY OF WATER RATES
(Dollars Per Acre Foot)

FROM	TO	MWD	AUTHORITY	TOTAL	AGRICULTURAL REBATE	RESULTING AGRICULTURAL RATE
7/1/58	1/1/61	15.00	2.00	17.00	3.00	14.00
1/1/61	1/1/62	17.00	2.00	19.00	4.25	14.75
1/1/62	1/1/63	19.00	2.00	21.00	5.50	15.50
1/1/63	1/1/64	21.00	2.00	23.00	6.75	16.25
1/1/64	7/1/64	24.00	2.00	26.00	9.00	17.00
7/1/64	9/1/64	25.00	2.00	27.00	9.75	17.25
9/1/64	7/1/65	25.00	1.25	26.25	9.75	16.50
7/1/65	7/1/66	28.00	1.25	29.25	12.00	17.25
7/1/66	7/1/67	31.00	1.25	32.25	14.00	18.25
7/1/67	7/1/68	34.00	1.25	35.25	16.00	19.25
7/1/68	7/1/69	37.00	1.25*	38.25*	18.00	20.25*
7/1/69		40.00	1.25*	41.25*	20.00	21.25*

*Subject to change.

In order to obtain the agricultural rebate, it is necessary for the Authority to certify to the Metropolitan Water District as to the quantities of water used for agricultural purposes. Rebates granted to the Authority by the District are paid in full to the agencies which had previously certified that such water was used for agricultural purposes.

Water Production of Member Agencies

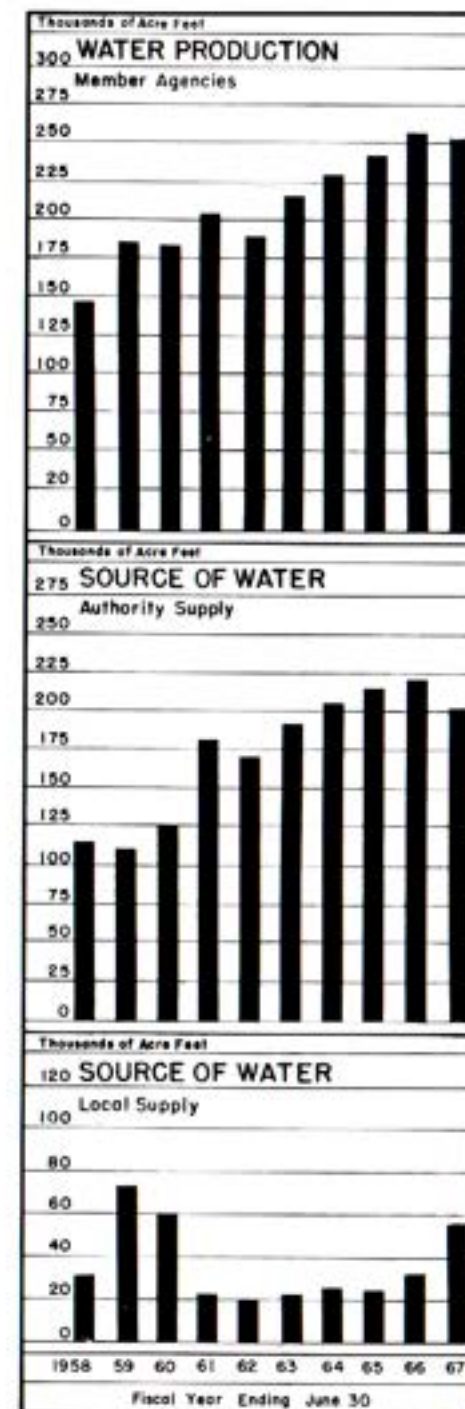
"Water production" describes that quantity of water which an agency must produce from all its sources to meet the demands of its consumers, plus the losses which occur between the sources of supply and the consumers, including leakage, losses from breaks, evaporation from distribution reservoirs, and waste resulting from normal operations. Sources of supply may include impounding reservoirs, wells, and the Authority system.

The total water production of the twenty-two member agencies is shown in Table 7. Eleven member agencies indicated an increase in water production over the previous year; however, the total decreased from 258,720 acre feet to 256,044 acre feet. Maximum monthly production occurred in August, 1966 when 33,677 acre feet of water was required to

WATER SUPPLY AND CONSUMPTION

meet the combined demand of the member agencies' consumers, an increase of 6 percent over the previous year's maximum monthly production. Minimum monthly production occurred in April, 1967 when 11,523 acre feet of water was produced, 1,302 acre feet more water than was used in the minimum month of previous year. Several Authority agencies have extensive local water supplies available. The heavy rainfall of October and December, 1966 provided some runoff so that production of local water increased to 55,862 acre feet or 21.8% of the total.

The wells in Pauma Valley produced 3,906 acre feet of water for the several agencies within the Yuima District. The San Luis Rey River system and the Warner Ranch wells owned by the Vista Irrigation District, a sub-agency of Bueno Colorado Municipal Water District, produced 11,057 acre feet for distribution within Bueno Colorado Municipal Water District, Rincon Municipal Water District, and the City of Escondido, California. American Water Company produced approximately 6,043 acre feet of local water within its service area which included National City and South Bay Irrigation District. The most extensive reservoir system within San Diego County Water Authority is owned by the City of San Diego. The City system produced 23,588 acre feet of local water during the year, 5,432 acre feet of which was



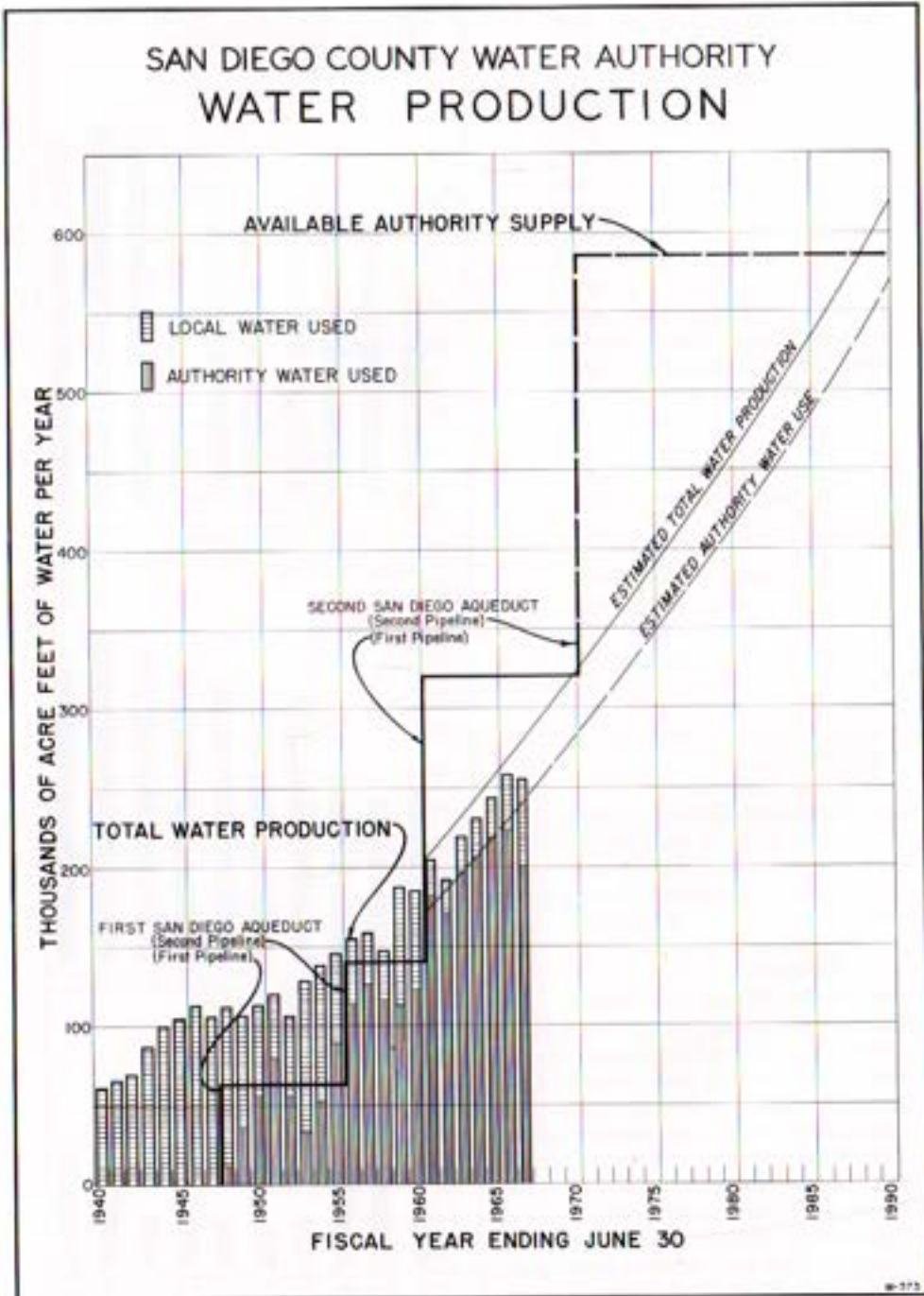


Figure B. Water Production of Authority Member Agencies

delivered for use in areas outside of the Authority. Detailed statistics on water production are in Table 8.

A comparison of water production by the member agencies can be found in Table 9. This table lists water production based on area and population in acre feet per acre per year, and acre feet per capita per year. The water systems of member agencies are serving an estimated 296,300 acres out of the 730,932 acres or 41 percent of the total area of the County Water Authority.

Volume of water used per year per unit area varies a great deal depending on the state of development, type of soil, type of crop, and on other variables. The Rainbow and Yuima Municipal Water Districts are intensively irrigated agricultural districts with a water requirement of 1.60 acre feet per acre. The relatively undeveloped Olivenhain Municipal Water District and Ramona Municipal Water District report 0.09 and 0.16 of an acre foot per acre, respectively. The Authority average is 0.85 of an acre foot per acre on the 296,300 acres served.

Per capita water use within the Authority decreased to .21 of an acre foot per year. Yuima Municipal Water District reports 5.78 acre feet per capita based on a population of 1,050 persons which reflects the high agricultural demand.

Figure B shows the combined water production of the Authority member agencies and compares production with available local supply.

Columns representing annual production are shaded to show contrast between water obtained from local sources and that which has been supplied by the Water Authority from the Colorado River. The chart shows the expanding use of Authority water and the year to year changes in the quantity of available local water.

Projections of future production of water are based on the assumption that additional water will be available when needed. The staff of the Authority has predicted that additional aqueduct facilities will be required to serve the Authority by the year 1970.

Agricultural Water Use

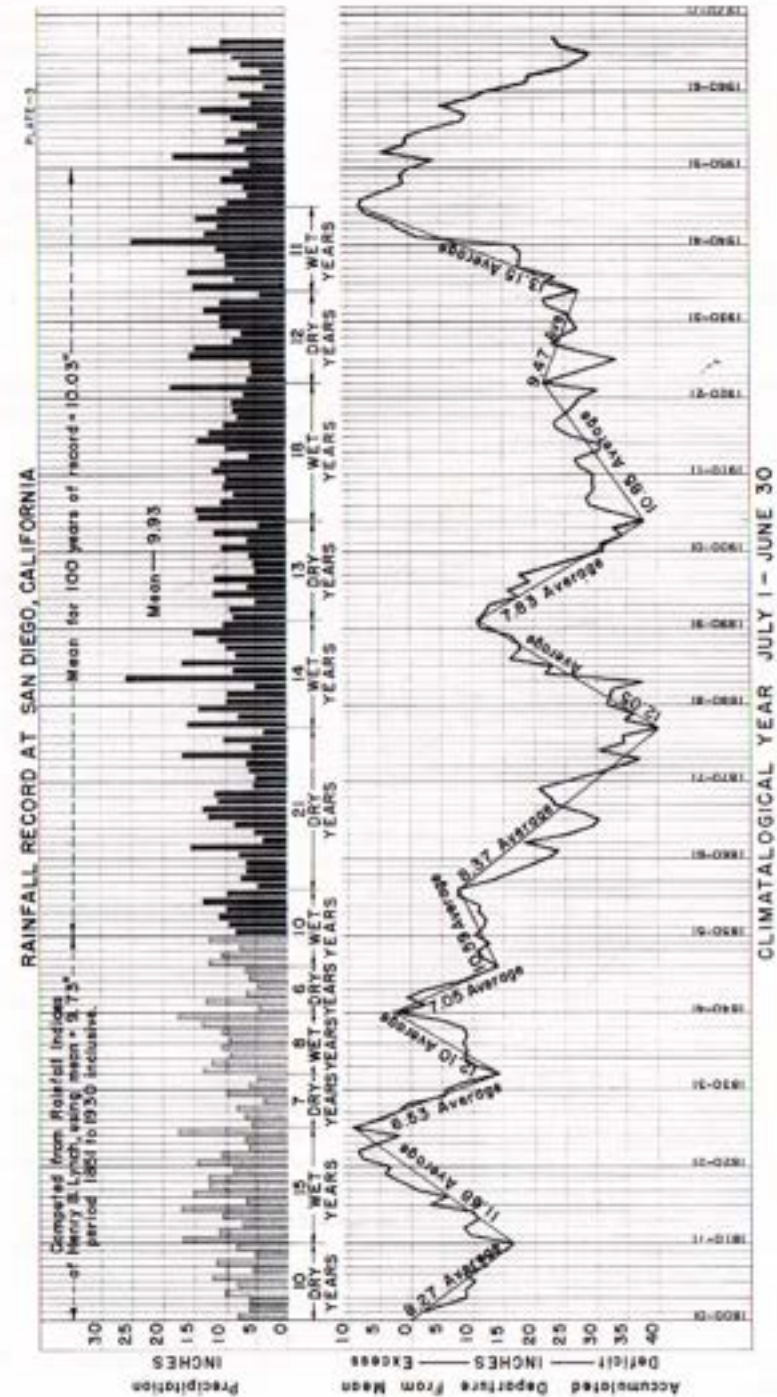
Agricultural water use amounted to 31.5 percent of the total of 250,612 acre feet produced by Authority agencies. The Metropolitan Water District allows a rebate for water used for agriculture. A rebate of \$14.00 per acre foot during the fiscal year justified extensive record keeping and reporting by member agencies. In order to obtain the rebate, each agency must certify to the Authority with substantiating data as to the total quantity of water used for agricultural purposes. Table 10 shows quantities of water used in agriculture. This year's report shows that Rainbow Municipal Water District had the highest percentage of agricultural water use at 97.0 percent.

Authority Facilities

The Authority system consists of the following facilities: The two San Diego Aqueducts south of Metropolitan's delivery point which is approximately six miles south of the Riverside County line; a portion of the Fallbrook-Oceanside Branch, extending southwesterly from the First San Diego Aqueduct at Rainbow; and the La Mesa-Sweetwater Branch Line, extending from the First Aqueduct at Slaughterhouse Canyon through Lakeside to a terminal point at Sweetwater Reservoir; plus a cross over aqueduct between the Second Aqueduct in Twin Oaks Valley to a point on the First Aqueduct just north of the City of Escondido. Treatment facilities are provided in a chlorination station in Rainbow Pass just north of the North San Diego County line where flows in both aqueducts are chlorinated.

The Authority does not own or operate storage facilities. It does, however, have a contractual right to store up to 30,000 acre feet of water in San Vicente Reservoir. The privilege results from an agreement with the City of San Diego which expires October 31, 1969. Under this agreement, the City charges \$2.20 per acre foot for the maximum amount of water in storage each year, plus fifty cents per acre foot to cover pumping charges for any water transferred from storage to the City. Under the agreement the first water of any water which might be lost over the spillway would be that stored by the Authority. During the low-demand months, a total of 4,248 acre feet of water was placed in San Vicente Reservoir by the Authority for the accounts of its member agencies. A total of 3,622 acre feet was withdrawn, and 1,194 acre feet was lost by evaporation. The net result of the year's activities was a decrease of 567 acre feet to 22,575 acre feet in storage on June 30, 1967. Storage statistics are shown in Table 11. The Valley Center District had the largest amount credited to its account, totaling 7,500 acre feet or about 33 percent of all Authority water stored in San Vicente Reservoir. In October, 1964, the agreement for storage in San Vicente Reservoir was renewed on the same terms and conditions for an additional five years.

The Authority also has an agreement with the City of San Diego which permits it to store up to 2,500 acre feet of water in the City's Lower Otay Reservoir, which is the terminus of the Second San Diego Aqueduct. This storage is for operational purposes only, and the water is transferred to the City of San Diego when water is requested by the City at this location. Storage capacity for member agencies is not provided at Lower Otay Reservoir. The City of San Diego makes a charge of \$1.00 per acre foot for the maximum amount of storage in any 12-month period or part thereof with a minimum annual charge of \$1,000 for use of the reservoir. In addition, there are pumping charges which vary from \$2.25 to \$1.50, depending on the elevation of the water in the reservoir.



The City of San Diego prefers to take direct deliveries of water at Otay from the aqueduct at a rate of flow determined by their treatment plant requirements. The City prefers not to have water delivered into the lake. For this reason, very close control is exercised by the Authority personnel in order to prevent spillage from the aqueduct into the Reservoir.

The Authority maintains an automatic telemetering and supervisory control system. This system provides operators at Escondido with the rate of incoming flow from Metropolitan No. 3 Meter, provides remote control and rate of flow indication in the Cross-Connection, plus indication of pressure in the final siphon on the Second Aqueduct. Remote control and rate of flow indication at San Diego No. 4, and Otay No. 3 are also provided.

Communications with Metropolitan's San Jacinto operation center is maintained by a two-way radio system between the Authority's operation center and San Jacinto.

Water Quality

Chemical constituents of dissolved solids in the aqueduct water are shown in Tables 12 and 16. The breakdown is based on analyses of water delivered to the aqueducts at San Jacinto as made by the laboratory of the Metropolitan Water District at the La Verne treatment plant. Variation in total hardness ranged from a high of 364 p.p.m. to a low of 336 p.p.m. Hardness is reported as p.p.m. equivalent of calcium carbonate. Water temperatures varied from a low of 54° F. recorded in January 1967, to a high of 83° F. reported in August, 1966.

Water Treatment

Throughout the year, Authority water continued to meet or exceed the minimum bacteriological quality standards as set forth in the United States Public Health Service Drinking Water Standards of 1962. Most agencies within the Authority complete their treatment of water by simple chlorination.

Over a period of years, the Authority has controlled bacterial growth on aqueduct pipe walls by "slugging" with chlorine. A continuous chlorination program has been in operation since 1965. The current policy is to apply chlorine on a continuous basis except for limited periods occasioned by mechanical shutdowns. The continuous chlorination program has proved successful and has resulted in fewer service problems. The rate of application of chlorine by the Authority ranged from 0.75 p.p.m. to 2.5 p.p.m., depending upon chlorine demand, temperature of the water, and other variables. A leak detector and automatic shutoff valve system provide protection against chlorine leakage. The chlorination station is located in Rainbow Pass, serving all three pipelines of the First and Second Aqueducts.

Several member agencies have large agricultural developments which are based on the use of irrigation water obtained from the Authority. The State Health Department has continued to recognize that Colorado River water supplied by the Authority meets drinking water standards after sterilization with chlorine. Current practice is to require dual chlorination with a time interval of at least one-half hour between the two points of application, where member agencies provide dual domestic and irrigation service. Five filtration plants are in operation within the Authority. These plants provide filtered water to the service area of five member agencies, City of San Diego, City of National City, South Bay Irrigation District, Helix Irrigation District and City of Del Mar.

Allocation of Water Among Member Agencies

The Authority Act (Sec. 5.11) provides the method by which the water supply of the Authority must be divided among its member agencies if the total demands for water should exceed the capacity of the Authority's aqueducts.

The quantity of water to which an agency has preferential right is that portion of the available Authority water supply which bears the same relation to the whole as the total of all payments paid to the Authority by the agency, exclusive of payments for water, bears to the total of such payments received from all agencies.

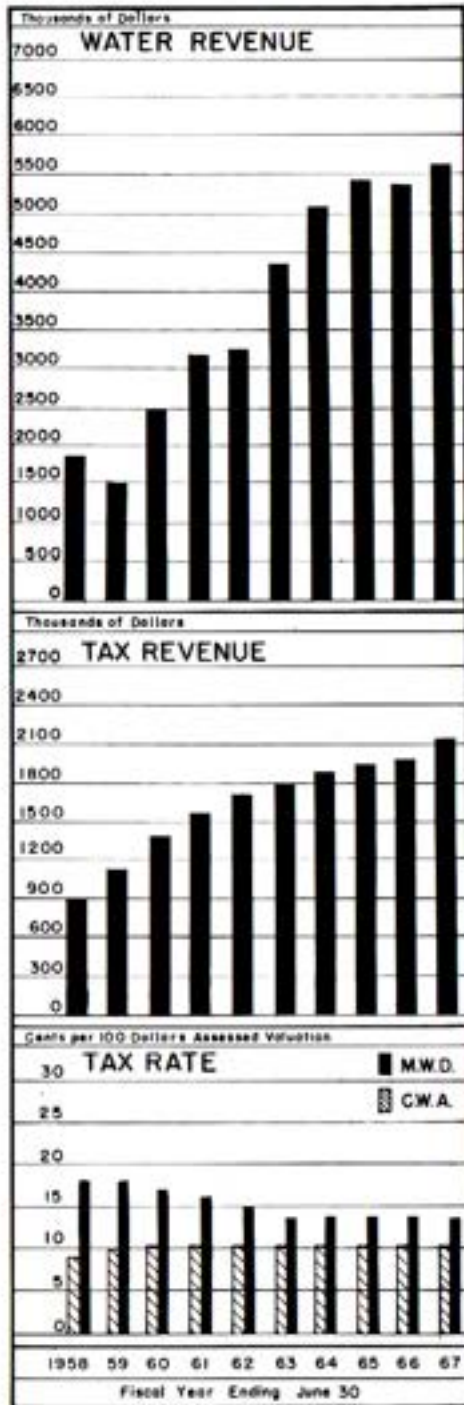
Allocation by preferential right will be invoked only when the combined demand for water exceeds the capacity of the Authority to deliver and agreement cannot otherwise be reached. When water and capacity are available, agencies may purchase water without limit.

Before construction of the Second San Diego Aqueduct, demand exceeded system capacity on several occasions; however, voluntary agreement between member agencies and the Authority permitted operation without resort to the provisions of Section 5.11 of the Authority Act. The percentage allocations in effect as of June 30, 1967, and the corresponding flows available from the present aqueduct system are shown in Table 13.

Future Supplies

The Water Authority obtains its water from The Metropolitan Water District of Southern California. At the present time all of the water comes from the Colorado River by way of the Colorado River Aqueduct. The Metropolitan Water District Board has adopted a statement of policy, frequently repeated, that when additional water or distribution facilities are needed to meet demands of its member agencies, additional water and facilities will be made available.

The first major step to obtain additional water was undertaken on November 4, 1960, when the District entered into a contract with the



State of California for 1,500,000 acre feet of water annually (contract subsequently amended to provide 2,000,000 acre feet) from the State aqueduct system (Feather River Project). State Project water has been scheduled for delivery to Southern California by the year 1971, and current reports state that construction is on schedule or ahead of schedule.

As a result of the U.S. Supreme Court's decision in the Case of "Arizona vs. California", less water may be available to the District annually than the 1,212,000 acre feet that the Colorado River Aqueduct is capable of bringing into Southern California. For this reason, the Metropolitan Water District's contract with the State of California has been amended to increase Metropolitan Water District's quantity of State Project water from 1,500,000 to 2,000,000 acre feet per year.

The State Water Project was about one-third completed by June 30, 1967. Oroville Dam and its power plants will be completed by the end of the calendar year. Pumping plants in the Delta, the aqueducts to the south and the joint Federal-State San Luis unit are nearly complete. The San Joaquin Aqueduct is well along and nearing its southerly terminus at the Tehachapi Mountains. During January, 1967, the Governor ordered a complete review of the State Water Project to determine construction

progress, financing and operational plans. A task force of water experts was appointed shortly thereafter. The task force report of May, 1967, indicated a possible up to \$300,000,000 deficiency to the year 1972 and a long term deficiency of up to \$600,000,000 by the year 1985. At year's end studies were underway to find solutions for the financial deficiencies. All proposals under study indicated that sufficient funds were available to complete the facilities necessary to deliver water to all contractors on time.

Responsible forecasts indicate that the remaining Colorado River entitlement, together with the State Project water, will meet the growing requirements of the Metropolitan Water District's member agencies until the year 1990. During this period of time, the population of the District is expected to increase from the present 10 million to about 20 million.

For the period beyond 1990, when additional supplies are required, many plans have been proposed which call for development of projects on the undeveloped rivers in Northern California, the Columbia River, and perhaps in Canada. These many proposals, together with sea water desalting, are being investigated by the Water Authority, the Metropolitan Water District, the State of California, and the Federal Government.

Figure B shows the increase in water requirements within the Authority since 1940. Studies indicate that additional aqueduct capacity may be required by the year 1970, by which time it will be necessary to have completed the Second Barrel of the Second San Diego Aqueduct.

DESIGN AND CONSTRUCTION

Escondido Operations Center

In October, 1966, the Board of Directors appointed a special building committee to work with the General Manager and Chief Engineer to make long range plans for the Water Authority's operating facilities. Members of the committee, with director R.E. Badger as Chairman, are Walter R. Beck, Baylor Brooks, Lloyd L. Lee, Charles C. Price, David R. Shephardson and O.B. Sholders. The committee determined that an Operations Center to be located on the same site as the present temporary buildings on Fifth Street in the City of Escondido would provide the most efficient facilities. Thereafter the firm of Hatch, Heimerdinger & Associates of San Diego was employed to develop the plans and prepare specifications for a contract. On May 11, 1967, bids were received from six bidders. The bids ranged from a high bid of \$339,780 to a low bid of \$298,540 submitted by Gene Fuller Construction of San Diego. At year's end a contract had been entered into with the low bidder and the project was scheduled for completion in December, 1967.

Second Pipeline, Second San Diego Aqueduct.

On June 7, 1966, voters throughout the Metropolitan Water District approved Proposition W for \$850,000,000 and San Diego County voters additionally approved Proposition V for \$30,000,000. The Metropolitan bond issue provides funds for expansion of its system to provide for delivery of State Project water. Among the facilities to be constructed is an Inland Feeder System which will connect Perris Reservoir with the San Diego Aqueducts.

First to be constructed is the Second Pipeline of the Second San Diego Aqueduct, from the end of the San Diego Canal near Auld Valley to the San Diego County Water Authority delivery point approximately six miles south of the Riverside-San Diego County Line. This pipeline, approximately 100,000 feet in length, will have a design capacity of 380 c.f.s.

The Authority has contracted with The Metropolitan Water District of Southern California to provide engineering service on the Perris to Casa Loma Aqueduct and the Second Pipeline of the Second San Diego Aqueduct. During the year, the Authority's engineering department in San Diego and Project Construction office in Escondido devoted approximately 60 percent of its total effort to this work. At year's end, the plans and specifications for the first ten miles of 8'-3" diameter pipeline from Auld Valley to a point near Temecula were 90 percent complete and were scheduled for advertising for bids in November, 1967. The following two schedules, covering the ten miles of 7'-4" diameter pipeline from Temecula to the point where Metropolitan delivers water to the Water Authority, are 20 percent complete. Advertising for bids on this section is scheduled for April, 1968.

The Water Authority engineering department was also active in preliminary engineering and surveying on the first section of its portion of the Second Pipeline of the Second San Diego Aqueduct. At year's end, the right of way requirements had been determined from the delivery point to Twin Oaks near San Marcos. The plan and profile sheets were being prepared.

OPERATION AND MAINTENANCE OF AQUEDUCTS

The Authority operates its aqueducts from a maintenance center at 660 West Fifth Avenue in Escondido. From that location, Superintendent Joseph E. Lester, directs all operational activities and all maintenance functions with a crew of twelve employees. Operation of the aqueducts which serve all member agencies, some with very small reservoir capacity, requires that system operators be on call twenty-four hours every day. The Superintendent resides in a company-owned house at the Escondido operation center. Telephone, two-way radio, and telemetering equipment provide the necessary continuous communication throughout the Authority service area.

Patrol

The Authority aqueducts and related facilities require continuous routine patrol to cope with vandalism, watch for leaks, and inspect structures, gates, culverts, and access roads.

In addition to patrol vehicles, the field forces are provided with a variety of equipment, including road graders, bulldozers, compressors, welders, and a well-equipped shop. Skilled Authority personnel perform many varied tasks, including carpentry, painting, electrical, road building, construction, and mechanical repair work.

Operating personnel and maintenance crews are dispatched by two-way radio. Base stations are maintained in San Diego, Escondido, and Hemet with a repeater station located on Palomar Mountain. The Authority maintains 13 mobile units in operation, maintenance, and construction.

During the past year, Authority employees traveled 130,000 miles while operating and maintaining the system. Routine system cleaning, painting, patrol and preventive maintenance continued throughout the period and included normal shop and field work with special emphasis on valve and meter servicing.

New telemetering equipment was received, installed and calibrated during the 12-month period. The new system provides information and additional flexibility in aqueduct operation, increasing the level of service quality throughout the entire service area. Aqueduct operational procedures were revised with the cooperation of member agencies to take maximum advantage of the new equipment.

During the first week in July the second pipeline of the First Aqueduct was dewatered south of Oat Hills Tunnel and north of the Cross-connection, in order to permit installation of the line valve for Escondido Service Connection No. 2. This installation was made with a minimum of interference to member agencies despite the current high demand for water.

In September, six members of the Engineering and Operations Committee and four other directors made an inspection trip over the south half of the aqueducts, from Escondido to Otay Reservoir, to complete the annual inspection of the aqueducts, as required in Section 2.2 of the Administrative Code.

The chlorination station alarm was wired into the telemetering system in October. Should a chlorine leak occur, an alarm will sound in the Authority's Escondido headquarters, as well as in the neighboring residence of the Metropolitan patrolman.

During November the semi-annual patrol of the aqueducts on foot was completed as well as another cycle of valve lubrication, packing, inspection and flushing of Venturi rings. Following heavy November rainfall, many culverts required attention, and some road grading was undertaken to improve drainage and travel conditions.

Maintenance and operating personnel activities were closely associated with a major storm, December 3-7, 1966, and its after effects for the entire month. The rainfall measured at the Escondido Operations Center amounted to 9.1 inches during this period. After the second day of heavy rainfall, all major streams were flowing and dozens of culverts were plugged or washed out. Authority patrol roads were generally impassable.

Many sections of old backfill over the pipelines settled, some as much as two feet. Repair of the access roads was hampered because of earth slides, impassable stream crossings and failure of several sections of county roads.

At the end of December, essentially all roads were passable and most of the damage to the roads and facilities had been repaired.

During the storm, Authority operations were further hampered by electric power and telephone failures. Power failures shut down the Rainbow Pass Chlorinator and affected automatic valve operators. Some telemetry and supervisory controls were inoperative during the peak of the storm. Fail-safe features and limit controls kept service problems at a minimum.

A capacity test was made on the cross-connection in February, and a maximum flow of 160 c.f.s. was reached. This is 23 percent above the 130 c.f.s. design capacity.

In March the Second Pipeline of the First Aqueduct across the San Luis Rey River was dewatered and inspected. Numerous bare spots in the coal tar lining were detected and repaired. A blow-off valve in the river bottom, which has been leaking, was replaced.

A capacity test was made in April on the Second Aqueduct south of Miramar, in which a total of 180 c.f.s. was achieved into Otay Reservoir. An access road was built on the Second Aqueduct right of way from Telegraph Canyon Road to Otay No. 2 Service Connection to replace a road on private property.

Servicing of valves in all control stations was completed during May and crews began flushing air and blow-off valves on the southern section of the First Aqueduct, the La Mesa-Sweetwater Extension and the Cross-connection. Access roads on the Cross-connection from the diversion structure to North Broadway in Escondido and in the Oat Hills area were graded.

In June, extensive patrolling of aqueduct roads was completed, along with another cycle of valve servicing. Many of the aqueduct structures which had accumulated groundwater were pumped dry and a new access road was opened up for patrolling along the Sweetwater Extension in an area which is being subdivided and developed.

As of July 1, 1967, there were 52 service connections on the Authority's system, ranging in capacity from 2 to 180 c.f.s. Flows are regulated by control valves operated by Authority personnel as requested by the agencies.

City of Escondido No. 2 Service Connection

This service connection located on the First San Diego Aqueduct just north of Hubbard Hill vent structure was completed in February, 1967.

The installation was made at an existing 20-inch nozzle which was placed in the Second Pipeline of the First Aqueduct at time of construction. It consists of a 24" x 13.5" Venturi tube activating a Builder's Type M totalizer-indicator-recorder meter instrument having a capacity of 40 c.f.s. Flows are controlled by a 24-inch butterfly valve, motor operated, with automatic controls to maintain a constant flow. The valves and meters are housed in a concrete block structure.

LEGAL DEPARTMENT ACTIVITIES

Anti-Trust Suits

Settlement was reached with all but one defendant in the actions filed by many plaintiffs, including the Authority, against the Southern California manufacturers of water pipe. The proceedings charged the pipe suppliers with a conspiracy to fix prices on public bidding and sought damages and penalties for such illegal activities. During the year a stipulated settlement was agreed upon with all of the suppliers except American Pipe and Construction Co., for the payment of \$21,275,000 in full discharge of their liability. Of this sum, the Authority's prorata share would be \$1,320,165.22 payable \$1,150,820.93 in cash and \$169,344.29 in seven equal annual installments with 5% interest.

This accomplishment at a minimal legal expense and the avoidance of arduous and extensive litigation was a highly acceptable conclusion to the action taken by the Board with some original misgivings in participating in the litigation.

Still pending was the action filed against the American Pipe and Construction Co. While a settlement of this litigation remained possible, it appeared likely that a trial would be necessary. The plaintiffs united in perfecting an organization either to negotiate a settlement or to prosecute the litigation. With the experience gained in the settlement of the major litigation with the large group of suppliers it was hoped that this remaining problem might be resolved with dispatch.

SAN DIEGO COUNTY WATER AUTHORITY

Annexation

The year opened with a backlog of annexation applications which had been held in suspense awaiting a determination by Metropolitan Water District of a policy governing terms and conditions of annexation and the determination and payment of annexation fees. These included De Luz Heights Municipal Water District as a new member agency of the Authority and concurrent annexations to Rainbow, Valley Center, Yuima, Olivenhain, and Ramona Municipal Water Districts. The terms fixed by Metropolitan included an annexation fee of \$200 per acre payable in annual installments with interest on deferred balances at 4% per annum collected at a maximum annual tax rate not to exceed 75¢ per \$100 of assessed valuation.

These terms and conditions were supplied the applicants and the legal proceedings to accomplish the annexations were instituted. By June 30, 1967, the annexation of De Luz Heights Municipal Water District was the only one completed but all were making satisfactory progress.

Colorado River Project

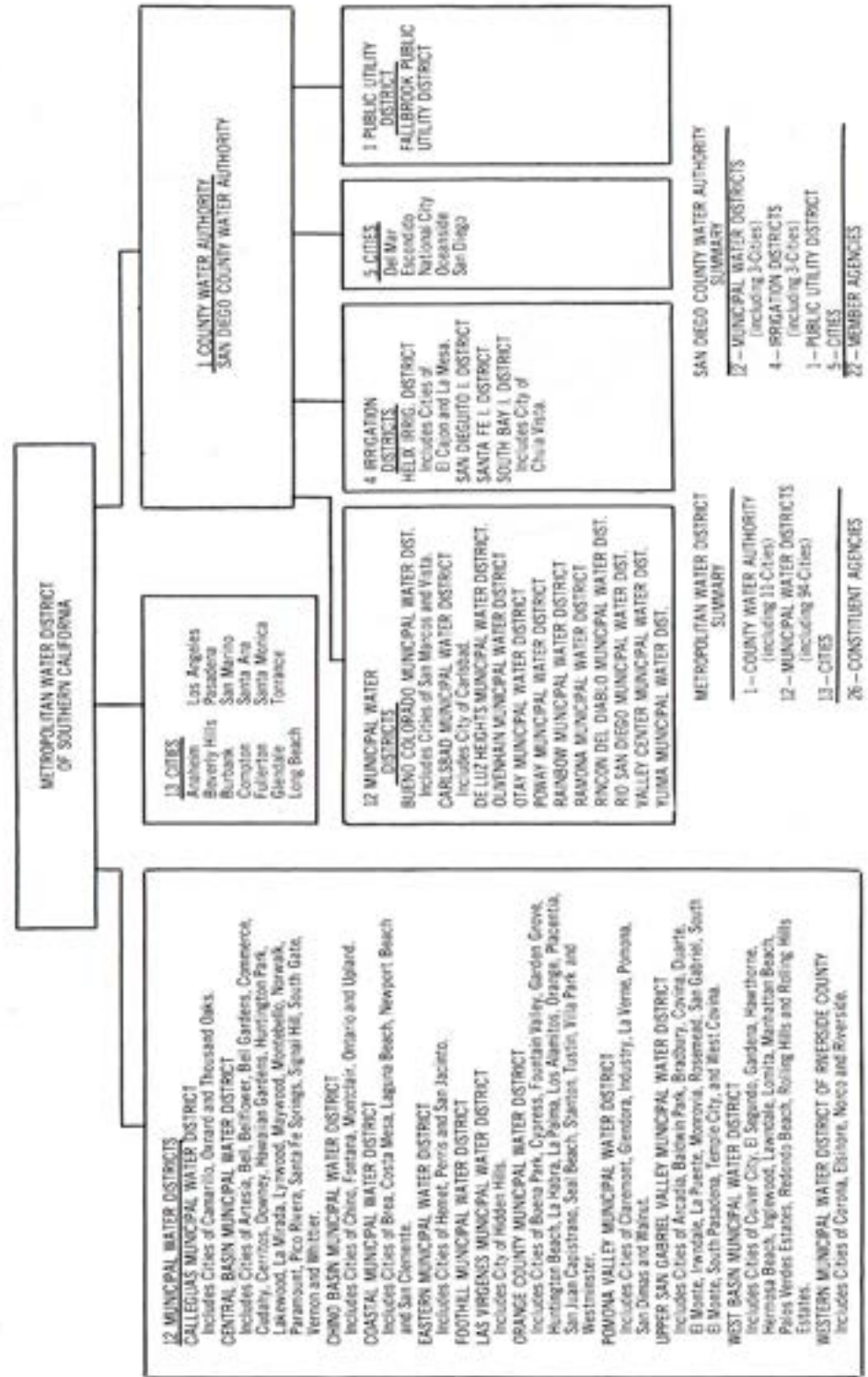
The project act which had received the approval of all the basin states the previous year and for which all had high hopes as the final settlement of the problems on the river, failed to reach the floor of the House of Representatives. Beset with opposition from sources from outside the basin—the conservationists opposing any new dams in the river, the Pacific Northwest States jealously protecting the Columbia River from any threat of exportation, the guardians of the Federal Treasury appalled at the huge costs involved, all combined to prevent the program from reaching Congress. The result shattered the seven-state basin-wide agreement. Arizona proceeded with its promotion of a single Central Arizona Project, omitting any reference to protection of existing projects, creation of a basin fund, construction of the cash register dams on the river to assist in the funding of the project and the authorization of any studies of sources from which the Colorado River might be augmented. California found it difficult to avoid opposing such a measure without abandoning long held principles which it had historically supported.

MEMBERSHIP IN THE METROPOLITAN WATER DISTRICT OF SOUTHERN CALIFORNIA

The Authority receives its entire supply of water from The Metropolitan Water District of Southern California and works very closely with that District. A brief outline of the District's organization and operations may be of interest to readers of this report.

COMPOSITION OF THE METROPOLITAN WATER DISTRICT OF SOUTHERN CALIFORNIA

JUNE 30, 1967



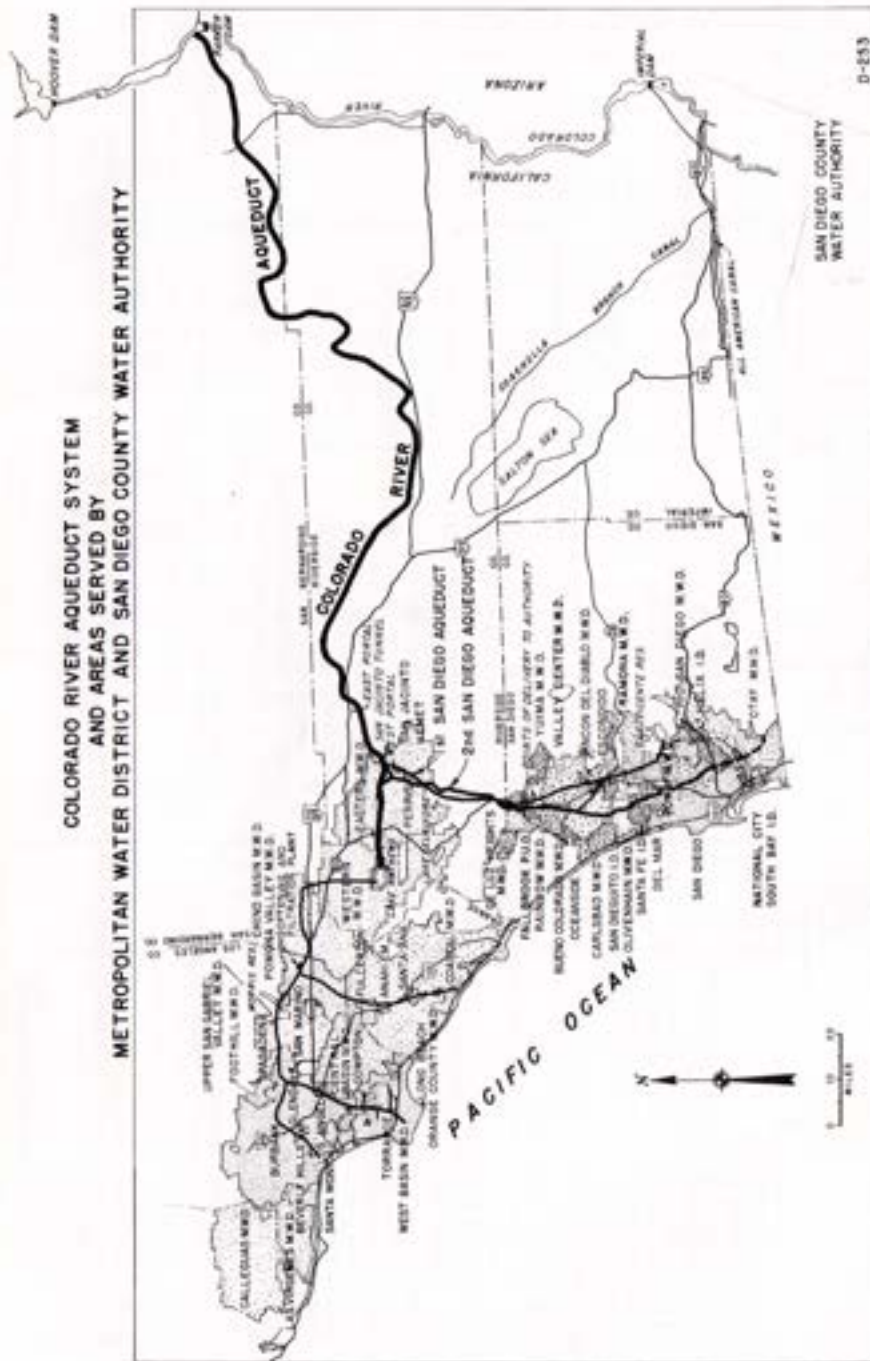


Figure E. Water Systems of Metropolitan Water District and San Diego County Water Authority

The Metropolitan Water District was organized in 1928 under the then newly-enacted Metropolitan Water District Act. The Act originally permitted annexation of cities only. Later, the Metropolitan Act was amended to allow inclusion of districts. The Metropolitan and Authority Acts are quite similar.

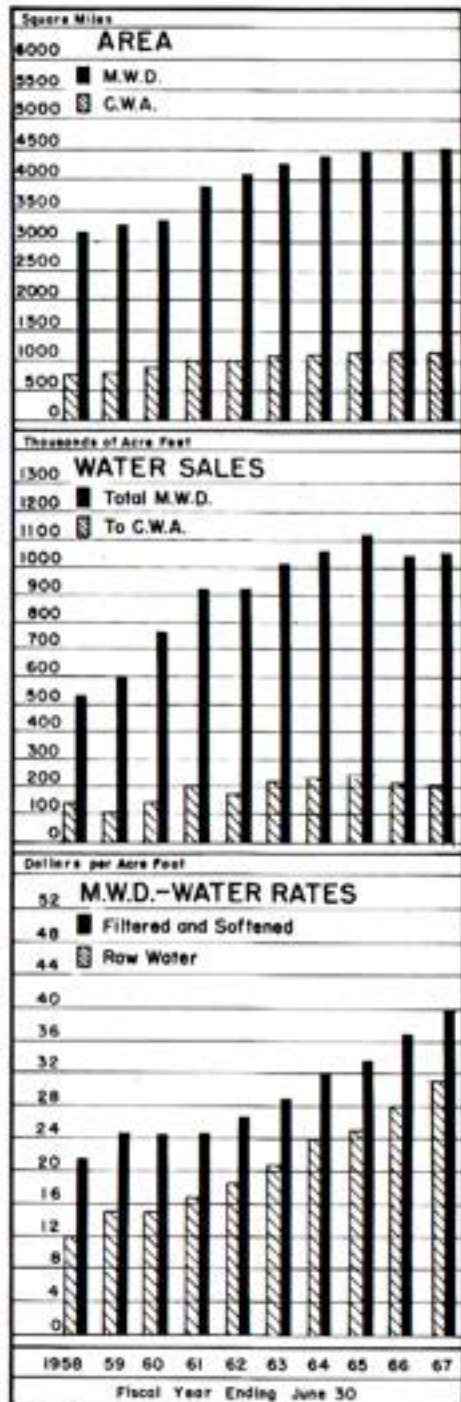
The District is governed by a Board of Directors. Each director represents a constituent member agency. A member agency is entitled to one director on the Metropolitan Board of Directors plus one additional director for each \$500 million of assessed valuation. Some agencies have a large number of directors serving on the District Board while other agencies have but one. As shown on Figure D, the District is comprised of 26 member agencies.

As of June 30, 1967, the Authority had three representatives serving on the District Board of Directors. Mr. Fred A. Heilbron, Chairman of the Authority Board of Directors, serves as Secretary of the Metropolitan Water District Board of Directors, having held this office since 1951. He is also a member of the Executive Committee, the Engineering and Operations Committee, and the Water Problems Committee. Mr. Hans H. Doe, Secretary of the Authority Board of Directors, is a member of the Operations and Personnel Committee and the Lands and Rights of Way Committee. He has served on the Board of Metropolitan for the past eight years. Mr. Harry Griffen, Authority Treasurer, was appointed to the District Board in January of 1963. Director Griffen is a member of the Finance and Insurance Committee and the Lands and Rights of Way Committee.

As of June 30, 1967, the Authority had a total of 193 votes out of 2,099 or 9.19 percent of the total. When Board action is taken, the votes of an agency are cast as a unit in accordance with the majority vote of that agency's representatives present.

Constituent Member Agencies and Area

As shown on Figure D, the District is comprised of 26 member agencies, consisting of 13 original cities, one county water authority, and 12 municipal water districts. Portions of Ventura, Los Angeles, Orange, Riverside, San Bernardino, and San Diego Counties are served water by the Metropolitan Water District. Within these districts there is a total of 119 incorporated cities. During the year, 11,155 acres were annexed to the District, of which 11,145 acres were also annexed to the Authority. As of June 30, 1967, District area equaled 4,533 square miles (2,901,421 acres), of which 1,142 square miles (730,932 acres) or 25.2 percent lie within the boundaries of the Water Authority.



Assessed Valuation

Total assessed valuation of taxable property lying within the boundaries of the District as determined by the assessors of the several counties for use in levying taxes for fiscal year 1966-1967 is \$20,979,150,165 an increase of \$1,835,992,377 or 9.6 percent over the assessed valuation of \$19,143,157,788 for the 1965-1966 fiscal year. An amount of \$47,264,730 or 2.6 percent of this increase occurred within the boundaries of the Authority.

Water Sales

A total of 1,059,312 acre feet of water was delivered by the District during fiscal year 1966-67. Of this amount, a total of 205,079 acre feet or 19.4 percent was delivered to the Authority. All water delivered to the Authority is untreated Colorado River water. The District operates a filtration and softening plant at La Verne, California, with a capacity of 400 million gallons per day and the recently completed Robert B. Diemer Filtration Plant in Orange County, which has a capacity of 200 million gallons per day. Provision has been made to double the Diemer plant capacity in the future. The Authority cannot be served from either of these plants.

For a breakdown of the Metropolitan Water District deliveries of water to its member agencies, see Table 15.

Tax Rate

The District maintained its tax rate of 14¢/\$100 of assessed valuation for 1966-67. In 1946 when the Authority annexed to the District, the tax rate was 50¢/\$100. During the past 20 years, progressive reductions in the tax rate have totaled 36 cents.

The tax rate for each year of operation is shown in Table 17. The total District tax levy including regular and special taxes in 1966-67 was approximately \$38,490,721, of which \$3,407,404 or 8.9 percent was levied against taxable property within the boundaries of the Authority. When the annexation fee is not paid in full in cash at the time of annexation, the Metropolitan Water District, by agreement, levies a special tax each year for 30 years to yield the total agreed upon annexation fee in substantially equal installments. As of June 30, 1967, member agencies of the Authority had assumed back-tax liability totaling \$23,346,329 of which a total of \$11,581,451 had been paid by June 30, 1967.

INDEX OF TABLES

	Table No.	Page
APPENDIX A — STATISTICAL TABLES		
Agricultural Use of Water — Fiscal Year 1966-67	10	52
Allocation of Right to Purchase Authority Water	13	55
Analysis of Colorado River Aqueduct Water	16	58
Area — Authority Member Agencies	1	42
Assessed Valuations — Authority Member Agencies and County	4	45
Assessed Valuations and Tax Rates of the Metropolitan Water District	17	59
Authority Storage in San Vicente Reservoir	11	53
Chemical Character of Natural Colorado River Water	12	54
Population — Authority Member Agencies and County	3	44
Population Growth — County and Authority Area	2	43
Sales of Colorado River Water — Fiscal Year 1966-67	5	46
Unit Water Production — Per Acre and Per Capita 1966-67	9	51
Water Production — Metropolitan Water District Constituent Areas	15	57
Water Production of Authority Agencies — Fiscal Year 1966-67	8	50
Water Production of Authority Agencies: Fiscal Years 1957-58 to 1966-67	7	49
Water Sales — 1947-67	6	48
Water Sales by Metropolitan Water District	14	56
APPENDIX B — FINANCIAL REPORT		
Annexation Charges, Assessments and Balances		87
Appropriations and Expenditures		72
Assessed Valuations and Tax Rates		83
Auditor's Report		61
Balance Sheet		62
Bonds Payable		76
Changes in Reserves and Surplus		64
Comments		80
Insurance Coverage		86
Investments		75
Legal Debt Margin		85
Letter of Transmittal		60
Metropolitan Water District Annexation Charges, Assessments and Balances on Authority Areas		88
Notes to Financial Statements		67
Operating Expense		70
Property, Plant and Equipment		78
Revenue		71
Revenue and Expense		66
Summary of Cash Receipts and Disbursements		74
Tax Assessments and Tax Collections		82
Tax Levies and Tax Collections		84

SAN DIEGO COUNTY WATER AUTHORITY

Table 1

AREA - AUTHORITY MEMBER AGENCIES

Member Agencies	Area Within Authority			Percent of Total Authority Area 6-30-67
	As of 6/30/66	Changes During Year	As of 6/30/67	
	acres	acres	acres	
Buena Vista M. W. D.	48,974	0	(2) 48,974	6.70
In City of San Marcos	(8,094	(+ 7)	(8,101)	(1.11)
In City of Vista	(7,500)	(0)	(7,500)	(1.03)
Carlsbad M. W. D.	20,602 (1) -	366	(3) 20,236	2.77
In City of Carlsbad	(6,733)	(+ 398)	(7,131)	(0.98)
Del Mar, City of	1,082	0	1,082	0.15
De Luz Heights M. W. D.		+10,280	10,280	1.41
Escondido, City of	8,494	+ 228	8,722	1.19
Fallbrook Public Utility District...	15,470	0	15,470	2.12
Helix Irrigation District	31,185	+ 2	(4) 31,187	4.27
In City of El Cajon	(7,191)	(+ 40)	(7,231)	(0.99)
In City of La Mesa	(4,900)	(+ 19)	(4,919)	(0.67)
National City, City of	5,121	+ 137	5,258	0.72
Oceanside, City of	21,648	+ 366	22,014	3.01
Olivenhain M. W. D.	27,162	0	(5) 27,162	3.72
Otay M. W. D.	64,572	- 8	(6) 64,564	8.83
Poway M. W. D.	22,980	0	22,980	3.14
Rainbow M. W. D.	39,114	0	39,114	5.35
Ranosa M. W. D.	41,365	0	41,365	5.66
Rincon del Diabolo M. W. D.	21,083 (1) -	228	(7) 20,855	2.85
Rio San Diego M. W. D.	54,105	0	54,105	7.40
San Diego, City of	193,865	+ 864	194,729	26.64
San Dieguito Irrigation District....	4,926	0	4,926	0.67
Santa Fe Irrigation District	10,181	0	(8) 10,181	1.39
South Bay Irrigation District	15,948 (1) -	130	(9) 15,818	2.17
In City of Chula Vista	(9,598)	(+ 113)	(9,711)	(1.33)
Valley Center M. W. D.	59,510	0	59,510	8.14
Yuima M. W. D.	12,400	0	12,400	1.70
Total Authority Area	719,787	+11,145	730,932	100.00
San Diego County				2,725,100

- (1) Includes area annexed by an adjacent city member agency but still in district, being an overlapping area and considered here as being part of the city.
- (2) Does not include 2,608 acres overlapping in City of Oceanside and 284 acres overlapping in City of Escondido.
- (3) Does not include 602 acres overlapping in City of Oceanside.
- (4) Does not include 3 acres overlapping in City of San Diego.
- (5) Does not include 5 acres overlapping in City of San Diego.
- (6) Does not include 5,927 acres overlapping in City of San Diego.
- (7) Does not include 5,757 acres overlapping in City of Escondido and 1 acre overlapping in City of San Diego.
- (8) Does not include 3 acres overlapping in City of San Diego.
- (9) Does not include 217 acres overlapping in City of San Diego and 476 acres overlapping in City of National City.

TABLES

Table 2

POPULATION GROWTH - COUNTY AND AUTHORITY AREA

1910 to 1967

(Includes Resident Military Personnel)

Year (as of April 1)	COUNTY		AUTHORITY		Percent of County Population in Authority
	Total Population (1)	Average Annual Growth	Total Population	Average Annual Growth	
1910 . . .	61,665				
				5,068	
1920 . . .	112,248			9,741	
1930 . . .	200,650			7,969	
1940 . . .	289,318				
1946 . . (3)	502,804	26,746 (2)	440,659	2,807	88
1950 . . .	550,808				
1960 . . .	1,003,520	(2)	451,886	60,451	95
1961 . . (4)	1,111,600		54,671	59,100	91
1962 . . (4)	1,167,700		(2) 966,400	69,500	93
1963 . . (4)	1,164,100		3,600	5,200	94
1964 . . (4)	1,177,700		(2) 1,090,300	34,800	96
1965 . . (4)	1,194,600		13,600	25,000	96
1966 . . (4)	1,250,000		(2) 1,125,000	25,000	94
1967 . . (4)	1,287,000		56,000	15,000	92
			108,080		
			(2) 1,015,500		
			(2) 966,400		
			(2) 451,886		
			54,671		
			3,600		
			(2) 1,090,300		
			13,600		
			(2) 1,125,000		
			56,000		
			(2) 1,175,000		
			37,000		
			(2) 1,190,000		

- (1) County population from U. S. Census Bureau Reports.
- (2) Authority population based on U. S. Census Bureau Reports.
- (3) Based on Special Census, U. S. Census Bureau, exclusive of emergency military personnel due to World War II.
- (4) Estimated by San Diego Chamber of Commerce.
- (5) Estimated by Authority member agencies.

Table 3
POPULATION - AUTHORITY MEMBER AGENCIES AND COUNTY
(Includes Resident Military Personnel)

Member Agencies	Population - U. S. Census				Annual Increase 1960-1967	Density of Population 1967
	Area 6/30/67	1950	1960	1967		
	Acres	(1)	(1)	Estimate (2)		
Bueno Colorado M. W. D.	48,974	-----	31,500	34,000	1	0.69
In City of San Marcos	(8,101)	-----	-----	(3,400)	---	0.42
In City of Vista	(7,569)	-----	-----	(20,850)	---	2.78
Carlsbad M. W. D.	20,236	-----	10,000	13,500	5	0.67
In City of Carlsbad	(7,131)	-----	(9,400)	(13,450)	6	1.89
Del Mar, City of	1,052	-----	-----	3,900	---	3.60
De Luz Heights M. W. D.	10,240	-----	-----	100	---	0.01
Escondido, City of	5,722	6,600	15,500	28,800	9	3.30
Fallbrook Public Utility District	15,470	5,500	10,000	11,300	2	0.73
Helix Irrigation District	31,184	44,160	122,100	176	4	3.140
In City of El Cajon	(7,231)	(5,600)	(37,300)	(45,650)	3	6.31
In City of La Mesa	(4,919)	(10,946)	(29,900)	(36,950)	3	7.51
National City, City of	5,258	21,200	32,300	35,100	1	6.65
Oceanside, City of	22,014	12,880	24,700	40,700	9	1.85
Olivenhalm M. W. D.	27,162	-----	200	600	29	0.02
Otay M. W. D.	64,564	-----	5,400	15,100	26	0.23
Poway M. W. D.	29,980	-----	4,800	9,300	13	0.40
Rainbow M. W. D.	39,114	-----	2,800	3,500	5	0.10
Ranoma M. W. D.	41,365	-----	5,600	5,950	1	0.14
Rincon del Diablo M. W. D.	20,855	-----	14,000	17,000	3	0.82
Rio San Diego M. W. D.	54,105	2,000	23,500	35,700	6	0.66
San Diego, City of	194,729	334,387	557,200	670,300	3	3.44
San Diego Irrigation District	4,926	6,223	15,000	20,300	5	4.12
Santa Fe Irrigation District	10,181	3,000	7,700	9,200	3	0.90
South Bay Irrigation District	15,818	28,930	64,300	76,500	3	4.54
In City of Chula Vista	(9,711)	(15,930)	(42,400)	(53,900)	4	5.55
Valley Center M. W. D.	39,510	-----	3,600	4,800	5	0.08
Yulma M. W. D.	12,400	-----	-----	1,050	---	0.08
Total Authority	730,932	451,890	955,000	1,190,000	3	1.63
San Diego County	2,723,100	556,810	1,003,520	1,257,000	4	0.47

(1) Population in agencies other than cities was furnished by agencies. (2) Estimated by agencies. * Revised from 1966 Report.

Table 4
ASSESSED VALUATIONS - AUTHORITY MEMBER AGENCIES AND COUNTY

Member Agencies	Assessed Valuation - Secured and Unsecured				Total	Per Acre
	Area 6/30/67	1965-66	1966-67	1967-68		
	Acres	Total	Total	Percent Increase		
Bueno Colorado M. W. D.	48,974	\$ 66,205,780	\$ 68,993,470	4.2	\$ 75,449,450	1,541
Carlsbad M. W. D.	20,236	43,072,840	47,810,060	6.1	51,514,860	2,546
Del Mar, City of	1,082	11,350,070	11,319,260	- 1.4	12,333,670	11,389
De Luz Heights M. W. D.	10,280	-----	-----	-----	(538,150)*	52
Escondido, City of	5,722	42,131,900	44,652,580	6.1	49,923,480	5,724
Fallbrook Public Utility District	15,470	13,234,080	17,331,860	13.2	17,931,470	1,160
Helix Irrigation District	31,187	218,641,620	221,685,770	1.4	240,571,210	7,723
National City, City of	5,258	42,312,280	43,040,280	1.7	43,552,030	8,283
Oceanside, City of	22,014	58,273,570	60,503,310	3.8	63,843,480	2,991
Olivenhalm M. W. D.	27,162	7,801,030	9,787,670	25.5	11,799,030	434
Otay M. W. D.	64,564	29,478,130	31,835,120	8.0	35,736,090	553
Poway M. W. D.	29,980	16,276,320	16,638,700	2.2	18,054,830	787
Rainbow M. W. D.	39,114	12,054,880	21,347,510	77.1	22,394,460	573
Ranoma M. W. D.	41,365	9,072,210	9,260,910	2.1	11,029,740	267
Rincon del Diablo M. W. D.	20,855	25,069,420	24,953,250	- 3.9	27,046,530	1,340
Rio San Diego M. W. D.	54,105	41,839,730	42,743,660	2.2	46,870,440	866
San Diego, City of	194,729	1,048,545,250	1,058,739,530	1.0	1,132,876,240	5,920
San Diego Irrigation District	4,926	27,399,830	27,361,920	- 0.1	29,827,230	6,053
Santa Fe Irrigation District	10,181	25,465,710	25,481,150	0.8	28,830,640	2,832
South Bay Irrigation District	15,818	124,915,060	130,560,560	4.5	132,866,070	9,664
Valley Center M. W. D.	39,510	9,262,410	10,147,650	9.3	21,997,070	370
Yulma M. W. D.	12,400	2,647,590	2,730,400	3.1	5,288,790	427
Total Authority	730,932	\$1,579,990,010	\$1,927,254,740	2.5	\$2,122,967,150	82,904
San Diego County	(1) 1,230,000	\$1,980,868,410	\$2,039,339,560	3.0	\$2,262,017,710	81,810

(1) Excluding 1,475,100 acres of tax-exempt lands in San Diego County.
* Not on Authority tax roll.

SAN DIEGO COUNTY WATER AUTHORITY

Table 5
SALES OF COLORADO RIVER WATER - FISCAL YEAR 1966-67

(All Figures in Acre Feet)

Member Agencies	July	August	Sept.	Oct.	Nov.	Dec.	Total 6 Months
Buena Colorado M. W. D.	1,644.8	1,700.6	1,494.2	1,128.3	514.4	404.9	6,887.2
Carlsbad, M. W. D.	772.7	864.6	818.1	663.8	374.0	193.9	3,687.1
Del Mar, City of	87.9	94.1	63.0	57.7	41.5	40.6	385.7
De Luz Heights M. W. D.	-----	-----	-----	-----	-----	-----	-----
Escondido, City of	409.3	393.9	341.2	287.5	208.8	178.2	1,818.9
Fallbrook P. U. D.	1,539.1	1,573.2	1,405.9	1,192.2	618.0	280.4	6,608.8
Helix I. D.	0	3,528.6	2,764.2	2,479.5	1,635.8	1,305.9	11,714.0
National City & South Bay I. D.	1,533.2	1,572.8	1,359.3	1,120.9	749.5	676.3	7,012.0
Oceanside, City of	938.2	989.6	790.9	689.7	470.9	383.4	4,262.7
Olivenhain M. W. D.	138.8	102.7	95.5	78.3	27.5	22.7	465.5
Otay M. W. D.	1,011.3	1,172.5	1,391.1	1,157.4	659.1	358.5	5,749.9
Poway M. W. D.	501.5	503.4	466.9	351.7	199.6	74.5	2,097.6
Rainbow M. W. D.	2,034.4	2,176.9	1,911.4	1,507.4	712.6	237.6	8,580.3
Ramona M. W. D.	135.0	133.4	99.1	59.9	59.1	28.6	515.1
Rincon del Diablo M. W. D.	925.4	1,073.5	386.3	203.2	175.6	265.9	3,029.9
Rio San Diego M. W. D.	634.6	603.7	521.4	395.1	286.4	232.1	2,673.3
San Diego, City of	8,673.8	7,357.5	9,650.1	8,063.9	8,733.8	6,756.3	49,235.4
San Dieguito I. D.	384.8	449.8	398.6	409.1	275.8	60.3	1,978.4
Santa Fe I. D.	384.8	449.7	398.6	409.0	275.7	60.3	1,978.1
Valley Center M. W. D.	1,281.0	1,336.8	1,149.7	904.8	343.9	161.6	5,177.8
Yuma M. W. D.	389.4	445.5	416.8	301.9	169.6	52.2	1,775.4
Total Sales to Agencies	23,420.0	26,522.8	25,923.2	21,461.3	16,531.6	11,774.2	125,633.1
Total Sales to Others	2.8	3.6	3.1	3.3	2.2	2.3	17.3
Total Sales to Agencies and Others	23,422.8	26,526.4	25,926.3	21,464.6	16,533.8	11,776.5	125,650.4
Total to Authority Storage	+ 76.8	+ 268.4	+ 217.7	+ 217.6	0	0	780.5
Total from Authority Storage .	0	- 303.4	- 466.9	- 2,014.8	- 279.9	- 217.0	- 3,482.0
Total to Metropolitan Storage .	0	0	0	0	0	0	0
Total from Metropolitan Storage	0	- 2,000.0	- 5,099.4	0	0	0	- 7,099.4
Total Flow in Authority System	23,499.6	24,291.4	20,577.7	19,667.4	16,253.9	11,559.5	115,849.5
Rate of Flow (c. f. s.)							
To Agencies and Others ..	380.9	431.4	435.7	349.1	277.9	191.5	344.3
To Authority Storage	+ 1.3	+ 4.4	+ 3.7	+ 3.5	0	0	2.1
From Authority Storage ..	0	- 8.2	- 7.9	- 32.7	- 4.7	- 3.5	- 9.5
To Metropolitan Storage ..	0	0	0	0	0	0	0
From Metropolitan Storage	0	- 32.5	- 85.7	0	0	0	- 19.5
Flow in Authority System .	382.2	395.1	345.8	319.9	273.2	188.0	317.4

TABLES

Table 5
(Continued)

	Jan	Feb	March	April	May	June	Total 6 Months	Yearly Total	Yearly Average c. f. s.
	560.5	495.0	372.4	250.4	535.3	532.6	2,746.2	9,633.4	13.3
	232.9	363.3	437.1	265.8	537.3	698.5	2,534.9	6,222.0	8.6
	37.3	38.7	42.4	32.4	55.5	59.6	265.9	651.6	0.9
	-----	-----	-----	-----	-----	-----	-----	-----	-----
	200.8	233.9	253.2	207.9	274.0	291.1	1,450.9	3,269.8	4.5
	574.6	501.1	339.1	155.2	799.0	870.1	3,239.1	9,847.9	13.6
	1,419.9	1,560.1	1,033.6	18.4	1,478.6	1,619.9	7,130.5	18,844.5	26.0
	387.9	423.4	3.4	0	248.2	473.4	1,536.3	8,548.3	11.8
	482.3	425.6	481.7	375.2	734.5	791.3	3,280.6	7,543.3	10.4
	22.0	24.0	26.8	26.1	125.6	113.4	337.9	803.4	1.1
	330.9	309.8	299.2	136.3	639.9	602.3	2,518.4	8,268.3	11.4
	169.0	166.3	181.7	85.8	365.7	356.6	1,325.1	3,422.7	4.7
	578.3	586.5	487.6	123.5	1,089.9	1,277.9	4,143.7	12,724.0	17.6
	45.1	41.9	43.7	29.8	87.3	97.5	345.3	860.4	1.2
	576.3	492.1	312.9	55.8	194.6	187.1	1,818.8	4,848.7	6.7
	256.0	231.9	290.1	231.2	483.4	526.2	2,018.8	4,692.1	6.5
	4,559.6	4,888.1	4,127.3	5,143.4	9,394.1	10,202.2	38,314.7	87,550.1	121.0
	164.7	184.7	152.9	0	0	0	502.3	2,480.7	3.4
	164.7	184.7	153.0	0	0	0	502.4	2,480.5	3.4
	368.8	302.8	226.8	62.4	676.1	861.1	2,498.0	7,675.8	10.6
	92.6	46.2	29.5	0	120.9	99.9	389.1	2,164.5	3.0
	11,224.2	11,490.1	9,294.4	7,199.6	17,829.9	19,860.7	76,898.9	202,532.0	279.7
	2.4	2.2	2.0	2.1	2.5	3.2	14.4	31.7	0.1
	11,226.6	11,492.3	9,296.4	7,201.7	17,832.4	19,863.9	76,913.3	202,563.7	279.8
	0	0	0	+ 124.4	0	+ 3,467.3	+ 3,591.7	+ 4,372.2	+ 6.0
	- 45.1	- 41.9	- 43.7	- 8.8	0	- 120.3	- 259.8	- 3,741.8	- 5.1
	0	+ 5,836.9	+ 373.2	+ 6,144.7	+ 4,823.1	0	+ 17,177.9	+ 17,177.9	+ 23.7
	0	0	0	0	- 3,000.0	- 4,000.0	- 7,000.0	- 14,099.4	- 19.5
	11,181.5	17,287.3	9,626.9	13,462.0	19,655.5	19,210.9	90,423.1	206,272.6	284.9
	182.6	286.9	151.2	121.0	290.0	333.8	214.2	279.8	
	0	0	0	+ 2.1	0	+ 58.3	+ 10.0	+ 6.0	
	- 0.7	- 0.7	- 0.7	- 0.2	0	- 2.0	- 0.7	- 5.1	
	0	+ 105.1	+ 0.1	+ 103.3	+ 78.5	0	+ 47.9	+ 23.7	
	0	0	0	0	- 48.8	- 67.2	- 19.5	- 19.5	
	181.9	311.3	156.6	226.2	319.7	322.9	251.9	284.9	

WATER SALES - 1947 to 1967

(All figures in acre feet)

Member Agencies	1947-59(a)	1959-60	1960-61	1961-62	1962-63	1963-64	1964-65	1965-66	1966-67	Totals
Bueno Colorado M. W. D.	21,718	3,735	10,143	9,334	9,735	9,358	10,095	11,377	9,633	95,131
Carlsbad M. W. D.	9,146	3,558	5,421	5,692	7,195	6,392	6,217	6,103	6,232	55,977
Del Mar, City of	0	0	0	175	652	830
De Luz Heights M. W. D.	0	0
Escondido, City of	9,459	2,142	2,757	2,436	2,623	2,853	3,112	3,157	3,270	31,839
Fallbrook Public Utility District ..	56,599	5,106	10,332	5,576	10,223	10,317	10,550	10,764	9,845	135,570
Helix Irrigation District	109,925	14,176	23,754	22,324	27,395	24,008	23,963	23,963	18,844	294,032
National City & South Bay I. D.	94,622	10,656	12,619	11,917	12,455	12,076	12,597	9,907	8,548	185,797
Oceanside, City of	18,117	3,328	3,923	3,788	4,442	6,397	7,276	7,366	7,543	62,380
Olivenhain M. W. D.	4,030
Otay M. W. D.	201	639	1,120	1,749	5,332	5,008	6,045	6,079	5,263	35,041
Poway M. W. D.	4,540	1,507	2,203	2,009	2,803	2,754	3,196	3,317	3,423	25,519
Rainbow M. W. D.	17,021	3,662	7,613	7,458	9,503	11,197	11,930	13,591	12,724	96,701
Ramona M. W. D.	198	322	469	651	759	753	753	895	860	5,394
Rincon del Diablo M. W. D.	18,837	2,244	7,968	6,157	7,551	9,445	9,314	7,956	4,849	74,351
Rio San Diego M. W. D.	3,945	2,138	2,935	2,899	3,573	3,479	4,095	4,593	4,692	32,354
San Diego, City of	639,951	93,592	85,323	87,481	104,601	116,100	105,814	86,575	87,550	1,410,287
San Dieguito Irrigation District	5,569	1,498	3,545	2,817	3,098	2,858	2,724	2,310	2,431	29,781
Santa Fe Irrigation District	6,830	1,346	3,258	2,537	2,660	2,509	2,509	2,310	2,451	26,440
Valley Center M. W. D.	2,337	1,358	2,124	2,170	2,962	3,432	5,331	7,233	7,676	34,583
Yuma, M. W. D.	4,088
Total Sales to Agencies	1,022,051	156,387	185,546	180,351	217,371	229,811	230,557	212,859	202,532	2,641,025
Total Sales to Others	271	115	106	75	53	54	73	32	1,317
Total to Authority Storage	4,908	-10,368	-7,972	-8,365	-3,540	+9,794	-7,814	-4,372	-129,568
Total from Authority Storage	52,311	-972	-3,601	-5,342	-1,467	-36	-9,728	-3,742	-96,774
Total to Metropolitan Storage	-25,326	-17,178	-42,504
Total from Metropolitan Storage	-17,561	-14,099	-31,660
Total Flow in Authority System	1,042,440	142,241	198,257	184,838	220,472	231,937	240,679	218,813	206,273	2,685,980
Rate of Flow (c. f. s.)
To Agencies and Others	121.7	216.1	260.6	249.3	300.4	316.6	310.0	294.1	279.8	186.1
To Authority Storage	8.6	+ 6.8	+ 14.6	- 11.0	- 11.5	+ 4.9	+ 13.5	- 10.8	+ 6.0	+ 9.1
From Authority Storage	6.2	- 27.0	- 1.3	- 5.0	- 7.4	- 2.0	- 6.1	- 13.4	+ 3.2	- 6.5
To Metropolitan Storage	- 35.0	+ 23.7	- 3.0
From Metropolitan Storage	- 24.3	- 19.4	- 2.2
Flow in Authority System	124.1	195.9	273.9	255.3	304.5	319.5	332.4	302.2	284.9	189.2

(1) The operation of the first Aqueduct was formally initiated on November 27, 1947. For sales in intervening years see previous reports.

TABLES

Table 7

WATER PRODUCTION WITHIN AUTHORITY AGENCIES - FISCAL YEARS 1957-58 to 1966-67

(All Figures in Acre Feet)

Member Agencies	1957-58	1958-59	1959-60	1960-61	1961-62	1962-63	1963-64	1964-65	1965-66	1966-67
Bueno Colorado M. W. D.	11,098	15,000	13,116	14,066	11,937	13,763	12,743	13,022	13,616	12,551
Carlsbad M. W. D.	2,607	3,923	4,980	7,091	6,711	7,285	6,412	6,295	6,347	6,330
Del Mar, City of	(a)	(a)	(a)	(a)	397	684*	691	629	650	652
De Luz Heights M. W. D.	(a)	(a)	(a)	(a)	(a)	0	0	0	0	0
Escondido, City of	1,730	2,213	2,694	3,136	3,211	3,628	3,953	4,275	4,556	4,552
Fallbrook Public Utility District ..	6,709	10,013	9,130	10,724	8,999	10,379	10,712	10,716	11,016	9,872
Helix Irrigation District	15,848	21,595	21,689	24,029	21,936	23,391	22,943	25,069	26,036	25,572
National City and South Bay I. D. .	12,316	14,597	13,299	14,148	13,529	14,219	14,621	14,143	14,614	14,391
Oceanside, City of	4,204	5,107	5,081	5,374	5,030	5,795	6,664	7,424	7,447	7,697
Olivenhain M. W. D.	(a)	(a)	(a)	12*	145	370	620	717	910	503
Otay M. W. D.	2*	146	470	967	1,460	5,351	5,008	6,045	6,079	5,268
Poway M. W. D.	755	1,310	1,567	2,203	2,009	2,508	2,754	3,196	3,317	3,423
Rainbow M. W. D.	4,052	6,976	6,748	5,771	8,333	10,400	11,431	12,629	14,149	13,123
Ramona M. W. D.	175*	351	520	541	643	744	825	859	1,019	1,039
Rincon del Diablo M. W. D.	7,881	11,733	10,359	11,502	9,432	11,547	12,108	11,945	12,613	11,707
Rio San Diego M. W. D.	1,438	3,311	2,856	3,326	3,329	3,928	4,580	4,958	4,958	4,958
San Diego, City of
Inside City	70,032	90,000	50,796	84,345	81,156	89,825	92,451	95,032	102,174	103,894
Outside City (not in Authority)	2,609	3,598	4,178	4,940	5,007	4,278	4,498	4,922	5,326	5,432
San Dieguito Irrigation District ..	3,524	4,247	3,757	4,212	3,568	3,847	3,743	4,037	3,920	4,022
Santa Fe Irrigation District	2,507	3,563	3,487	3,927	3,349	3,706	3,938	3,725	3,968	3,822
Valley Center M. W. D.	769	776	1,354	2,124	2,170	2,002	3,432	5,331	7,333	7,576
Yuma, M. W. D.	(a)	(a)	(a)	(a)	(a)	(a)	8,623	9,252*	9,142	6,070
Total	148,579	187,939	186,115	205,540	192,554	219,930	231,545	243,893	258,720	256,044

* Use of Colorado River water began this year. All other agencies' use began prior to 1957-58. See previous reports.

(a) Not available.

Table 8
WATER PRODUCTION OF AUTHORITY AGENCIES - FISCAL YEAR 1966-67

Member Agencies	TOTAL WATER PRODUCTION				SOURCE OF WATER			
	as m.g.d.	as c.f.g.	as ac.ft./yr.	Local Supply	Authority Supply	Local Supply	Authority Supply	
				Amount ac. ft.	Amount ac. ft.	Percent	Percent	
Bueno Colorado M. W. D.	11.20	17.34	12,531.1	2,887.4	23.0	9,643.7	77.0	
Carlsbad M. W. D.	5.07	8.77	6,350.0	163.3	2.6	6,186.7	97.4	
Del Mar, City of	0.58	0.90	651.6	0	0	651.6	100.0	
De Luz Heights M. W. D.	0	0	0	0	0	0	0	
Escondido, City of	4.09	6.33	4,582.0	1,312.2	28.6	3,269.8	71.4	
Fallbrook Public Utility District	5.81	13.64	9,871.8	23.9	0.2	9,847.9	99.8	
Helix Irrigation District	22.92	35.46	25,672.2	7,451.3	29.1	18,190.9	70.9	
National City and South Bay I. D.	13.03	20.15	14,391.0	6,043.0	41.4	8,348.0	58.6	
Oceanside, City of	6.79	10.31	7,656.5	24.3	0.3	7,532.2	99.7	
Olivenhain M. W. D.	0.72	1.11	803.4	0	0	803.4	100.0	
Poway M. W. D.	7.33	11.42	8,268.3	0	0	8,268.3	100.0	
Rainbow M. W. D.	3.06	4.73	3,422.7	0	0	3,422.7	100.0	
Rainbow M. W. D.	11.72	18.13	13,123.2	455.2	3.5	12,668.0	96.5	
Ramona M. W. D.	0.93	1.43	1,038.7	178.3	17.2	860.4	82.8	
Rincon del Diablo M. W. D.	10.45	16.17	11,706.9	6,458.2	58.6	4,848.7	41.4	
Rio San Diego M. W. D.	4.36	6.75	4,888.3	196.2	4.0	4,692.1	96.0	
San Diego, City of	92.73	143.31	103,893.9	18,155.7	17.5	85,738.2	82.5	
Inside City	4.85	7.50	5,431.7	5,431.7	100.0	0	0	
Outside City (Not in Authority)	3.59	5.56	4,022.3	1,377.6	34.2	2,644.7	65.8	
San Diego Irrigation District	3.41	5.28	3,822.4	1,357.9	35.8	2,464.5	64.2	
Santa Fe Irrigation District	6.45	10.60	7,673.8	0	0	7,673.8	100.0	
Valley Center M. W. D.	3.42	8.38	6,070.3	3,905.8	64.3	2,164.5	35.7	
Total	224.55	353.67	356,044.1	53,862.0	21.6	200,182.1	75.2	

Note: This table is a compilation of data furnished by member agencies. Figures include losses in transmission and distribution systems but not in conservation reservoirs.

Table 9
UNIT WATER PRODUCTION - PER ACRE AND PER CAPITA 1966-67

Member Agencies	Gross Area (2) acres	Total Production of Water ac. ft.	Estimated Area Served by Water System acres	Water Production	
				Per Area Served ac. ft./acre/yr.	Per Capita ac. ft./cap./yr.
Bueno Colorado M. W. D.	48,974	12,531.1	34,110	0.37	34,000
Carlsbad M. W. D.	20,236	6,350.0	13,000	0.42	13,500
Del Mar, City of	1,052	651.6	1,000	0.60	3,900
De Luz Heights M. W. D.	10,250	0	0	0	100
Escondido, City of	8,722	4,582.0	8,000	0.57	28,500
Fallbrook Public Utility District	15,470	9,871.8	7,640	1.29	11,300
Helix Irrigation District	31,187	25,672.2	25,300	0.90	103,000
National City, City of	5,258	3,806.0	3,450	0.99	35,100
Oceanside, City of	22,014	7,606.5	12,300	0.61	40,700
Olivenhain M. W. D.	27,162	803.4	8,900	0.09	600
Poway M. W. D.	64,864	8,268.3	24,500	0.34	15,100
Rainbow M. W. D.	22,990	3,422.7	6,500	0.53	9,300
Rainbow M. W. D.	39,114	13,123.2	9,200	1.60	3,900
Ramona M. W. D.	41,365	1,038.7	6,350	0.16	5,950
Rincon del Diablo M. W. D.	20,853	11,706.9	10,930	1.07	17,000
Rio San Diego M. W. D.	54,105	4,888.3	11,300	0.43	35,700
San Diego, City of	194,729	(1) 103,893.9	73,990	1.40	670,300
San Diego Irrigation District	4,926	4,022.3	4,100	0.96	20,300
Santa Fe Irrigation District	10,151	3,822.4	7,300	0.52	9,200
South Bay Irrigation District	15,818	10,785.0	9,670	1.12	76,500
Valley Center M. W. D.	59,510	7,673.8	10,600	0.77	4,800
Yuma M. W. D.	12,400	6,070.3	3,900	1.60	1,800
Total and Average	730,932	250,612.4	296,300	0.55	1,190,000

(1) Does not include production by City of San Diego for areas outside City (not in Authority).
(2) Does not include overlapping area as shown in Table 1.

Table 10
AGRICULTURAL USE OF WATER - FISCAL YEAR 1966-67

Member Agencies	Total Water Production (ac. ft.)	Water Used for Agricultural Purposes			Percent of Agricultural Water to Total P Production
		From Local Supply (ac. ft.)	From Authority (ac. ft.)	Total (ac. ft.)	
Bueno Colorado M. W. D.	12,351.1	1,755.7	6,312.4	8,101.1	64.5
Carlsbad M. W. D.	6,350.0	63.2	4,413.9	4,479.1	70.5
Del Mar, City of	631.6	(b)	(b)	(b)	(b)
De Luz Heights M. W. D.	0	0	0	0	0
Esccondido, City of	4,552.0	491.8	1,110.2	1,602.0	35.0
Fairbrook, Public Utility District	9,871.8	0	5,645.5	5,645.5	57.6
Helix Irrigation District	25,072.2	1,975.8	3,339.0	7,354.8	28.6
National City & South Bay I. D.	14,591.0	354.3	640.1	1,024.4	7.0
Oceanside, City of	7,606.5	(a)	(a)	(a)	(a)
Olivenshain M. W. D.	8,803.4	0	741.2	741.2	92.3
Poway M. W. D.	8,298.3	0	5,690.7	5,690.7	68.5
Poway M. W. D.	3,422.7	0	2,255.3	2,255.3	66.5
Rainbow M. W. D.	13,123.2	440.4	12,257.9	12,728.3	97.0
Ranoma M. W. D.	1,038.7	52.9	408.8	461.7	44.4
Rincon del Diablo M. W. D.	11,706.9	5,243.7	3,533.9	9,097.6	77.7
Rio San Diego M. W. D.	4,585.3	22.3	193.4	215.9	4.4
San Diego, City of	103,593.9	541.2	2,992.9	3,534.1	3.4
San Dieguito Irrigation District	4,022.3	(b)	(b)	(b)	(b)
Santa Fe Irrigation District	3,522.4	(b)	(b)	(b)	(b)
Valley Center M. W. D.	7,675.8	0	7,165.0	7,165.0	93.3
Yulma M. W. D.	6,070.3	3,800.0	2,010.8	5,810.8	95.7
Total	250,612.4	14,806.5	64,111.0	78,917.5	31.5

(a) No report was received from agency, assumed no agricultural use.
(b) Included in City of San Diego.

Table 11
AUTHORITY STORAGE IN SAN VICENTE RESERVOIR
(Fiscal Year 1966-67)

Member Agencies	Total Quantity in Storage 7/1/66 (acre feet)	Placed into Storage during Fiscal Year (acre feet)	Withdrawn During Fiscal Year		Total Quantity in Storage 6/30/67 (acre feet)
			By Delivery (acre feet)	By Evaporation (acre feet)	
Bueno Colorado M. W. D.	1,764.9	41.3	0	97.7	1,708.5
Carlsbad M. W. D.	0	0	0	0	0
Del Mar, City of	0	0	0	0	0
De Luz Heights M. W. D.	0	0	0	0	0
Esccondido, City of	646.0	95.7	257.0	31.1	423.1
Fairbrook Public Utility District	374.7	55.4	100.0	31.8	328.3
Helix Irrigation District	0	0	0	0	0
National City & South Bay I. D.	0	0	0	0	0
Oceanside, City of	705.7	0	0	38.9	669.8
Olivenshain M. W. D.	400.0	3.2	0	21.9	381.3
Poway M. W. D.	964.5	1,088.2	0	52.7	2,000.0
Poway M. W. D.	3,000.0	90.5	970.3	133.5	1,956.7
Rainbow M. W. D.	5,000.0	2,010.4	1,773.4	237.0	5,000.0
Ranoma M. W. D.	295.0	300.0	287.1	19.3	300.0
Rincon del Diablo M. W. D.	400.0	77.2	203.2	19.3	254.7
Rio San Diego M. W. D.	1,447.2	33.4	0	90.3	1,400.3
San Diego, City of	0	0	0	0	0
San Dieguito Irrigation District	0	0	0	0	0
Santa Fe Irrigation District	0	414.3	0	414.3	7,500.0
Valley Center M. W. D.	7,500.0	8.2	0	24.3	422.7
Yulma M. W. D.	438.8	0	0	0	0
Total	23,142.8	4,247.8	3,621.5	1,193.7	22,575.4

Table 12
CHEMICAL CHARACTER OF NATURAL COLORADO RIVER WATER
AT WEST PORTAL OF SAN JACINTO TUNNEL

Year Ending June 30, 1967

Samples Taken at Entrance to San Diego Aqueduct by M. W. D.
and Analyzed by District Laboratory

Month	Total Hardness as P. P. M. CaCO ₃	Non Carbonate Hardness as P. P. M. CaCO ₂	Alkalinity as P. P. M. CaCO ₃		Magnesium as P. P. M. of Mg.	Hydrogen Ion Concentration	Temperature when sampled °F
			Total	Phenolphthalein			
July	364	241	123	1	32.0	8.4	79
August	356	236	120	0	32.0	8.4	83
September	345	228	117	0	31.0	8.4	78
October	345	227	118	1	31.0	8.3	71
November	345	227	118	0	31.0	8.2	67
December	344	225	119	1	32.0	8.3	63
January	347	224	123	0	31.0	8.2	54
February	352	229	123	0	31.5	8.2	56
March	344	224	120	2	32.0	8.4	59
April	340	219	121	1	30.5	8.4	64
May	343	219	124	2	30.0	8.4	64
June	336	213	123	2	30.0	8.4	72
Average	347	226	121	1	31.0	8.3	68
Maximum	364	241	124	2	32.0	8.4	83
Minimum	336	213	117	0	30.0	8.2	54

Table 13
ALLOCATION OF RIGHT TO PURCHASE AUTHORITY WATER

As of June 30, 1967

Member Agencies	Total Amount Paid by Each Member Agency to 6/30/67	Amount Remaining to be paid under Terms of Annexation	Total Contributions Paid and Contracted for	Allocation	
				Percentage of Authority Supply	Equivalent Flow c. f. a.
Bueno Colorado M. W. D.	\$ 663,750.50	\$ 0.00	\$ 663,750.50	2.85	12.87
Carlsbad M. W. D.	464,791.18	0.00	464,791.18	2.00	9.00
Del Mar, City of	96,868.34	76,676.99	176,545.33	0.75	3.42
De Luz Heights M. W. D.	300.00	6,900.00	7,400.00	0.03	0.14
Esccondido, City of	393,347.10	0.00	393,347.10	1.69	7.60
Fallbrook Public Utility District	189,130.85	1,475.07	190,605.92	0.82	3.69
Helix Irrigation District	2,571,622.75	3,199.36	2,574,822.11	11.08	49.86
National City, City of	563,703.14	0.00	563,703.14	2.43	10.93
Oceanside, City of	580,710.53	0.00	580,710.53	2.50	11.25
Olivewood M. W. D.	37,280.37	16,249.58	53,529.95	0.23	1.04
Poway M. W. D.	246,840.60	6,137.09	252,977.69	1.09	4.91
Rainbow M. W. D.	137,231.90	832.47	138,064.37	0.60	2.70
Ramona M. W. D.	127,202.96	923.73	128,126.69	0.53	2.48
Rincon del Diablo M. W. D.	119,926.49	1,732.66	121,659.15	0.52	2.34
Rio San Diego M. W. D.	433,342.09	0.00	433,342.09	1.47	6.61
San Diego, City of	14,032,357.37	0.00	14,032,357.37	60.46	272.07
Santa Fe Irrigation District	296,902.03	2,328.19	299,230.22	1.29	5.80
Santa Fe Irrigation District	364,535.62	0.00	364,535.62	1.34	5.13
South Bay Irrigation District	1,360,416.34	0.00	1,360,416.34	5.83	26.32
Valley Center M. W. D.	101,662.60	1,466.48	103,129.08	0.44	1.98
Yutma M. W. D.	21,973.82	27,798.49	49,772.31	0.21	0.95
Total Authority	\$23,068,364.37	\$172,950.12	\$23,241,323.49	100.00	450.00

Table 14
WATER SALES BY METROPOLITAN WATER DISTRICT
Fiscal Years 1941-42 to 1966-67

Year	To Member Municipalities						Total
	Natural Water		Treated Water		Total to Agencies	To Others	
	Acre feet	Per cent	Acre feet	Per cent	Acre feet	Acre feet	
1941-42	0	0	9,372.6	100	9,372.6	70.7	9,443.3
1942-43	0	0	14,457.8	100	14,457.8	2,626.4	17,084.2
1943-44	0	0	15,874.9	100	15,874.9	3,301.8	19,176.7
1944-45	0	0	30,591.3	100	30,591.3	1,715.7	32,307.0
1945-46	0	0	46,685.8	100	46,685.8	1,264.2	47,950.0
1946-47	0	0	59,861.8	100	59,861.8	524.0	60,385.8
1947-48	41,093.5	36	71,995.4	64	113,088.9	116.8	113,255.7
1948-49	71,642.6	49	73,237.1	51	144,879.7	128.4	145,008.1
1949-50	69,398.0	49	72,936.0	51	142,344.0	23,371.6	165,615.6
1950-51	75,060.9	51	63,493.1	46	138,494.0	26,978.6	165,472.6
1951-52	66,674.3	44	81,616.1	56	151,290.4	42,464.2	193,754.6
1952-53	39,845.3	24	99,589.6	76	139,434.9	31,682.4	162,117.3
1953-54	120,773.0	51	115,550.6	49	236,323.6	7,820.7	244,144.3
1954-55	192,544.7	59	134,923.3	41	327,468.0	58,184.5	385,652.5
1955-56	190,337.2	53	169,506.4	47	359,843.6	45,562.9	405,406.5
1956-57	286,059.1	60	191,110.7	40	477,169.8	66,074.1	543,243.9
1957-58	266,024.1	57	197,900.0	43	463,924.1	75,612.8	539,536.9
1958-59	244,354.2	46	282,248.1	54	526,602.3	74,107.1	600,709.4
1959-60	425,019.0	58	304,874.8	42	729,893.8	3,523.2	733,417.0
1960-61	594,521.1	61	335,207.2	36	929,728.3	4,099.4	933,827.7
1961-62	608,811.0	66	312,975.9	34	921,786.9	3,676.9	925,463.8
1962-63	668,881.8	66	348,092.6	34	1,016,974.4	3,677.0	1,020,651.4
1963-64	671,853.4	63	388,553.9	37	1,060,407.3	3,776.7	1,064,184.0
1964-65	645,577.3	58	471,042.0	42	1,116,619.3	5,035.3	1,121,654.6
1965-66	550,630.8	52	503,424.9	48	1,054,055.7	4,821.8	1,058,877.5
1966-67	523,141.2	50	531,659.7	50	1,054,800.9	4,513.0	1,059,313.9

Table 15
WATER PRODUCTION - METROPOLITAN WATER DISTRICT CONSTITUENT AREAS
Figures Furnished by Metropolitan Water District

Constituent Areas	Total Water Production			Source of Water Produced - 1966-67			Percent of Total
	1966-67		Percent Increase or Decrease	M. W. D.		Other	
	Amount ac. ft.	1965-66		Amount ac. ft.	Percent of Total		
Anaheim	35,943	37,273	3.7	17,363	47	19,910	55
Beverly Hills	12,061	12,222	- 3.5	5,135	42	7,087	58
Burbank	25,575	25,514	- 0.2	5,900	23	19,614	77
Calleguas M. W. D.	71,004	72,117	1.6	20,533	28	51,584	72
Central Basin M. W. D.	213,373	209,357	- 1.8	51,297	24	155,260	72
Chino Basin M. W. D.	195,005	165,235	-13.7	9,546	6	155,689	94
Coastal M. W. D.	23,915	23,742	- 0.7	22,624	95	1,118	5
Compton	8,205	8,029	- 2.1	2,319	29	5,710	71
Eastern M. W. D.	119,171	109,115	- 8.4	28,626	26	90,489	74
Foothill M. W. D.	15,276	14,360	- 6.0	7,033	49	7,327	51
Fullerton	20,625	21,585	4.7	10,391	45	11,194	52
Glendale	22,923	22,310	- 2.7	2,690	12	19,620	88
Las Virgenes M. W. D.	2,432	2,704	11.2	2,652	98	52	2
Long Beach	57,975	59,305	2.3	35,866	60	23,439	40
Los Angeles	527,642	519,543	- 1.5	98,632	19	422,913	81
Orange County M. W. D.	213,702	199,604	-10.8	56,604	30	134,000	70
Pasadena	33,560	31,821	- 5.2	12,313	39	19,508	61
Pomona Valley M. W. D.	62,925	61,740	- 1.9	13,592	23	47,548	77
San Diego C. W. A.	258,720	260,929	0.9	203,077	79	55,852	21
San Marino	4,748	4,340	- 8.6	0	0	4,340	100
Santa Ana	22,029	22,403	1.7	6,956	31	15,447	69
Santa Monica	15,558	15,566	0.1	10,136	65	5,430	35
Torrance	20,506	21,597	5.3	17,042	79	4,555	21
Upper San Gabriel Valley M. W. D.	130,113	164,548	26.5	0	0	164,548	100
West Basin M. W. D.	150,035	149,336	- 0.5	101,670	68	47,666	32
Western M. W. D.	223,462	214,369	- 4.1	24,369	11	199,000	89
Totals	2,457,091	2,442,576	- 1.5	766,666	31	1,676,210	69

NOTES: (a) Includes 4,531 acre-feet of seepage into San Jacinto Tunnel.
 (b) Does not include 106,400 acre-feet of untreated water delivered to Central Basin for replenishment purposes within the Central and West Basin Water Replenishment District, and also does not include 3,377 acre-feet of treated water used for barrier injection.
 (c) Does not include 526 acre-feet of untreated water delivered for replenishment purposes.
 (d) Does not include 113,497 acre-feet of untreated water delivered for replenishment purposes, and also does not include 371 acre-feet of treated water used for barrier injection.
 (e) Includes 4,895 acre-feet delivered and kept in storage.
 (f) 29,000 acre-feet were delivered for replenishment purposes.
 (g) Does not include 44,064 acre-feet used for barrier injection.

Table 16

ANALYSIS OF COLORADO RIVER AQUEDUCT WATER
TAKEN AT WEST PORTAL OF SAN JACINTO TUNNEL
For year Ending June 30, 1967

Constituent	Symbol	ANALYSIS		
		Average	Maximum	Minimum
Silica	SiO2	8.6 ppm	9.7 ppm	5.1 ppm
Iron	Fe	88	93	85
Calcium	Ca	31	32	30
Magnesium	Mg	109	121	103
Sodium	Na	5	7	3
Potassium	K	1	2.4	0
Carbonate	CO3	145	150	142
Bicarbonate	HCO3	315	334	301
Sulfate	SO4	101	118	92
Chloride	Cl	1.3	1.9	0.9
Nitrate	NO3	0.5	0.5	0.4
Fluoride	F			
Total Dissolved Solids		733	768	703
Hardness as CaCO3				
Total		347	364	336
Carbonate		121	124	117
Noncarbonate		226	241	213
Alkalinity - Phenolphthalein		1	2	0
Alkalinity - Total		121	124	117
Free Carbon Dioxide	CO2	1	2	0
Hydrogen Ion Concentration	pH	8.3	8.4	8.2
Electrical Conductivity	ECx106 at 25° C	1,145.0	1,100.0	1,110.0

Table 17
ASSESSED VALUATIONS AND TAX RATES OF THE
METROPOLITAN WATER DISTRICT OF SOUTHERN CALIFORNIA

Fiscal Year	Area (acres)	Assessed Valuation Total (\$)	Tax Rate	
			Per \$100 Secured	Per \$100 Unsecured
1929-30	-	\$ 2,439,836,920	\$0.04	\$0.00
1930-31	-	2,431,684,250	.03	.04
1931-32	-	2,382,184,445	.03	.03
1932-33	-	1,936,051,180	.04	.03
1933-34	-	1,654,403,890	.04	.04
1934-35	-	1,587,147,565	.10	.04
1935-36	-	1,783,531,020	.20	.10
1936-37	-	1,789,160,685	.37	.20
1937-38	-	1,827,765,725	.40	.37
1938-39	-	1,896,966,255	.40	.40
1939-40	-	1,910,152,190	.42	.40
1940-41	389,588	1,841,248,450	.49	.42
1941-42	399,875	1,900,599,934	.48	.49
1942-43	400,614	2,001,924,735	.48	.48
1943-44	401,190	2,005,496,430	.48	.48
1944-45	401,536	2,109,192,795	.48	.48
1945-46	402,779	2,159,731,425	.50	.48
1946-47	501,425	2,413,186,570	.48	.50
1947-48	546,573	3,443,212,822 (2)	.35	.48
1948-49	578,368	3,883,081,225	.34	.35
1949-50	585,184	4,181,832,855	.34	.34
1950-51	721,850	4,281,519,725	.31	.34
1951-52	995,130	4,674,664,040	.30	.31
1952-53	1,129,448	5,372,498,515	.28	.30
1953-54	1,368,038	6,015,681,980	.25	.28
1954-55	1,783,651	6,548,392,114	.23	.25
1955-56	1,876,256	8,514,868,335	.21	.23
1956-57	1,932,205	9,674,000,560	.19	.21
1957-58	2,046,189	11,235,966,510	.18	.19
1958-59	2,128,333	12,070,838,070	.18	.18
1959-60	2,171,290	12,714,205,470	.17	.18
1960-61	2,544,960	13,737,971,925	.16	.17
1961-62	2,647,014	14,803,202,587	.15	.16
1962-63	2,797,946	15,699,681,030	.14	.15
1963-64	2,825,306	17,261,412,395	.14	.14
1964-65	2,882,144	17,787,246,740	.14	.14
1965-66	2,890,266	19,143,157,788	.14	.14
1966-67	2,901,421	20,979,150,165	.14	.14
1967-68 (3)		22,732,157,500	.14	.14

(1) Includes secured, unsecured, and public utility valuations.
 (2) First year in which Authority assessed valuation was included in district's assessed valuation.
 (3) Data for 1967-68 were available before completion of report and are included for convenience of reader.



SAN DIEGO COUNTY WATER AUTHORITY

2150 FOURTH AVENUE
SAN DIEGO, CALIFORNIA 92103
Telephone 797 3218 - Area Code 714

BOARD OF DIRECTORS
PAUL A. HALLERON, Chairman
R. C. BRIDEN, Vice Chairman
HAROLD H. DINE, Secretary

August 23, 1967

LINDEN R. BURZELL
GENERAL MANAGER
AND CHIEF ENGINEER
WILLIAM H. JENNINGS
GENERAL COUNSEL

Mr. Linden R. Burzell
General Manager and Chief Engineer
San Diego County Water Authority
2150 Fourth Avenue
San Diego, California 92103

Dear Sir:

Submitted herewith is the financial report of the San Diego County Water Authority for the fiscal year ended June 30, 1967.

The Water Authority uses a fund accounting system in compliance with the Board of Directors Resolutions, Ordinances and all applicable legal provisions.

Operating requirements have been met from the surcharge on the sale of water to member agencies. The following statements summarize the Authority's financial position and results of its operations for this fiscal year.

Depreciation is shown in our statements to conform to standard accounting practice. This item is not presented as a charge to operating expense and in no way used for rate setting purposes by the San Diego County Water Authority. If depreciation should be recovered through water rates, and a tax levied for principal and interest on debt, such practice we feel could be a form of double taxation.

The Board of Directors of the San Diego County Water Authority believe that the cost of facilities should be borne by the generation of taxpayers that benefit from them.

Bonded debt requirements are financed from the tax levy. United States Government contractual requirements are financed from the tax levy, and receipts from the Metropolitan Water District of Southern California. Payments from the Metropolitan Water District are for the purpose of satisfying their requirements for their share of construction costs pursuant to the purchase agreement for the northerly section of the First San Diego Aqueduct, within San Diego County.

Respectfully,

[Handwritten signature of Henry G. Lozano]

Henry G. Lozano
Chief Accounting Officer

MEMBER AGENCIES

Table with 4 columns: CITIES, IRRIGATION DISTRICTS, PUBLIC UTILITY DISTRICTS, MUNICIPAL WATER DISTRICTS. Lists various member agencies such as Del Mar, Escondido, National City, etc.

PEAT, MARWICK, MITCHELL & Co.

CERTIFIED PUBLIC ACCOUNTANTS
1850 FIFTH AVENUE
SAN DIEGO, CALIFORNIA 92101

The Board of Directors
San Diego County Water Authority:

We have examined the financial statements of the San Diego County Water Authority as of and for the year ended June 30, 1967 as listed under exhibits and schedules in the accompanying table of contents. Our examination was made in accordance with generally accepted auditing standards, and accordingly included such tests of the accounting records and such other auditing procedures as we considered necessary in the circumstances.

The financial statements included in this report were prepared from accounting records kept on a modified accrual basis. In general, revenues are recorded when earned and expenditures are recorded upon incurrence of liability, except accrued interest on outstanding indebtedness, which is payable from appropriations of the following year.

In our opinion, such financial statements present fairly the financial position of the San Diego County Water Authority at June 30, 1967 and the results of its operations for the year then ended, in conformity with generally accepted accounting principles applied on a basis consistent with that of the preceding year.

Peat, Marwick, Mitchell & Co.

August 11, 1967

SAN DIEGO COUNTY WATER AUTHORITY

Exhibit A

BALANCE SHEET

June 30, 1967

With comparative figures for 1966

ASSETS

	1967	1966
CURRENT ASSETS - GENERAL FUND:		
Cash with treasurer	\$ 502,468.42	850,188.96
Petty cash	300.00	300.00
Accounts receivable	659,003.08	855,048.76
Inventory of water in storage, at cost (first-in, first-out)	593,271.60	563,940.00
Inventory of materials and supplies	2,068.07	2,083.67
Investments, at cost (market value 1967 - \$363,473) (Schedule 5)	365,987.32	132,331.92
Total current assets - general fund	<u>2,123,998.49</u>	<u>2,403,893.31</u>
SPECIAL FUND ASSETS (note 1):		
Reserve fund:		
Cash with treasurer	722,973.42	751,713.81
Investments, at cost (market value 1967 - \$120,667) (Schedule 5)	123,418.51	99,940.00
Total reserve fund	<u>846,391.93</u>	<u>851,653.81</u>
Waterworks bonds, 1947, interest and sinking fund:		
Cash with treasurer	134,679.93	180,677.23
Cash with fiscal agent	4,000.00	5,500.00
Investments, at cost	-	31,000.00
Total waterworks bonds, 1947, interest and sinking fund	<u>138,679.93</u>	<u>217,177.23</u>
U.S. Government contract fund:		
Cash with treasurer	14,493.03	8,677.09
Due from Metropolitan Water District (note 2)	8,426,269.66	8,883,072.18
Total U.S. Government contract fund	<u>8,440,762.69</u>	<u>8,891,749.27</u>
Waterworks bonds, 1957, improvement fund:		
Cash with treasurer	2,430,196.85	2,539,269.44
Waterworks bonds, 1957, interest and redemption fund:		
Cash with treasurer	60,419.76	1,194.36
Cash with fiscal agent	20,390.25	8,163.25
Total waterworks bonds, 1957, interest and redemption fund	<u>80,810.01</u>	<u>9,357.61</u>
Capital improvement fund:		
Cash with treasurer	578,529.23	606,274.38
Annexation charges receivable - not due	172,959.12	201,073.20
Total capital improvement fund	<u>751,488.35</u>	<u>807,347.58</u>
PROPERTY, PLANT, EQUIPMENT AND PARTICIPATION RIGHTS, AT COST (note 3):		
Property, plant and equipment	55,704,491.02	55,548,597.40
Less accumulated depreciation	5,398,037.20	4,832,933.53
Net property, plant and equipment (Schedule 7)	50,306,453.82	50,715,663.87
Construction work in progress	126,579.59	81,481.83
Participation rights in Metropolitan Water District (note 3)	60,334,444.57	55,649,233.87
Net property, plant, equipment and participation rights	<u>110,767,477.98</u>	<u>106,446,379.57</u>
	<u>\$ 125,578,906.23</u>	<u>122,166,827.82</u>

FINANCIAL REPORT

Exhibit A

BALANCE SHEET

LIABILITIES, RESERVES AND SURPLUS

	1967	1966
CURRENT LIABILITIES - GENERAL FUND:		
Accounts payable	\$ 1,221,978.93	1,468,198.78
Unapplied credits for irrigation water	41,042.12	63,145.95
Advances by agencies for construction		10,428.00
Deposits by agencies for annexation	2,500.00	2,500.00
Total current liabilities - general fund	<u>1,265,521.05</u>	<u>1,544,272.73</u>
CURRENT LIABILITIES - SPECIAL FUNDS:		
Current installments of long-term debt	1,912,061.41	2,038,304.49
Accounts payable	2,371.06	257.27
Total current liabilities - special funds	<u>1,914,432.47</u>	<u>2,038,561.76</u>
LONG-TERM DEBT (note 4):		
General obligation bonds payable - not due	34,015,000.00	34,465,000.00
Estimated balance on U.S. Government contract	15,893,978.68	16,772,108.52
Balance of annexation charges - Metropolitan Water District	11,764,878.26	10,472,152.91
	61,672,956.94	61,709,261.43
Less current installments (above)	1,912,061.41	2,038,304.49
Net long-term debt	<u>59,760,895.53</u>	<u>59,670,956.94</u>
RESERVES AND SURPLUS:		
Reserves:		
Reserve for encumbrances	326,540.00	2,312.37
Reserves for debt redemption:		
Retirement of general obligation bonds	219,489.94	226,534.84
Retirement of U.S. Government contract	8,440,762.69	8,891,749.27
Total reserves	<u>8,986,792.63</u>	<u>9,120,596.48</u>
Net equity in property, plant, equipment and participation rights (note 3)	49,694,521.04	44,737,118.14
Appropriated surplus:		
Incomplete projects (continuing appropriations):		
General fund	94,993.73	108,530.49
Reserve fund	119,780.87	141,159.11
Waterworks bonds, 1957, improvement fund	687,091.63	49,788.75
Capital improvement fund	8,073.84	5,852.41
Total incomplete projects	909,940.07	305,330.76
Petty cash fund balance	300.00	300.00
Educational information fund balance	1,064.90	-
Reserve fund balance	726,611.06	710,483.57
Waterworks bonds, 1957, improvement fund	1,740,916.05	2,487,566.82
Capital improvement fund	416,692.62	801,409.09
Total appropriated surplus	<u>3,795,524.70</u>	<u>4,305,090.24</u>
Unappropriated surplus:		
Invested in water in storage	593,271.60	563,940.00
Invested in materials and supplies	2,068.07	2,083.67
Available for appropriation	165,879.14	184,207.86
Total unappropriated surplus	761,218.81	750,231.53
Contingent liabilities and commitments (notes 4, 5 and 6)	\$ 125,578,906.23	122,166,827.82

See accompanying notes to financial statements.

SAN DIEGO COUNTY WATER AUTHORITY

Exhibit B

STATEMENT OF CHANGES IN RESERVES AND SURPLUS
Year ended June 30, 1967

	Total	General Fund*	Reserve Fund
Balances, July 1, 1966	\$ 58,910,724.02	859,062.02	851,642.68
Additions:			
Revenue other than general fund (Schedule 2)	2,951,505.24	-	16,127.49
Contribution by citizens' committee	1,024.76	1,024.76	-
Refund of prior year expenditures	910.36	888.37	-
Interfund transfer	66,500.00	36,500.00	-
Agencies contributions to Metropolitan Water District:			
Reduction of annexation charges due Metropolitan Water District	700,274.65	-	-
Participation rights in Metropolitan Water District	2,683,210.70	-	-
Increase in special deposit for bond principal and interest	12,227.00	-	-
Payments on U. S. Government contracts	879,029.84	-	-
Redemptions of waterworks bonds	450,000.00	-	-
Additions to property, plant and equipment:			
Additions, net (Schedule 7)	200,991.38	-	-
Accumulated depreciation on retirements	7,989.33	-	-
Total additions	7,962,663.26	38,413.13	16,127.49
Deductions:			
Revenue under expense (Exhibit C)	21,241.45	21,241.45	-
Expenditures, other than general fund (Schedule 3)	3,063,858.26	-	21,378.24
Tax collection expense	5,364.53	-	-
Decrease in amount due from Metropolitan Water District	456,802.52	-	-
Annexation charges collected (included in revenues above)	28,114.08	-	-
Expenditures from general fund for plant and equipment	18,656.26	18,656.26	-
Interfund transfer	66,500.00	-	-
Decrease in special deposit for bond interest	1,500.00	-	-
Depreciation expense	573,093.00	-	-
Total deductions	4,235,330.10	39,897.71	21,378.24
Net change	3,727,333.16	(1,484.58)	(5,250.75)
Balances, June 30, 1967	\$ 62,638,057.18	857,577.44	846,391.93
Analysis of reserves and surplus:			
Reserves	8,986,792.63	-	-
Net equity in fixed assets	49,694,521.04	-	-
Appropriated surplus:			
Incomplete projects (continuing appropriations)	900,940.07	94,993.73	119,780.87
Other	2,885,584.63	1,364.90	726,611.06
Unappropriated surplus	761,218.81	761,218.81	-
	\$ 62,638,057.18	857,577.44	846,391.93

*Includes educational information fund having a balance of \$1,064.90 at June 30, 1967. See accompanying notes to financial statements.

FINANCIAL REPORT

Exhibit B

STATEMENT OF CHANGES IN RESERVES AND SURPLUS
Year ended June 30, 1967

Waterworks Bonds, 1947 Interest and Sinking Fund	U. S. Government Contract Fund	Waterworks Bonds, 1957 Improvement Fund	Waterworks Bonds, 1957 Interest and Redemption Fund	Capital Improvement Fund	Net Equity in Fixed Assets
217,177.23	8,891,749.27	2,537,355.57	9,357.61	807,261.50	44,737,118.14
82,676.61	1,135,730.54	-	1,651,947.51	65,023.09	-
-	-	-	-	-	-
-	-	21.99	-	-	-
-	30,000.00	-	-	-	-
-	-	-	-	-	-
-	-	-	-	-	709,274.65
-	-	-	-	-	2,683,210.70
-	-	-	12,227.00	-	-
-	-	-	-	-	879,029.84
-	-	-	-	-	450,000.00
-	-	-	-	-	200,991.38
-	-	-	-	-	7,989.33
82,676.61	1,165,730.54	21.99	1,664,174.51	65,023.09	4,930,495.90
-	-	-	-	-	-
150,500.00	1,158,551.57	109,369.88	1,588,780.00	26,278.57	-
173.91	1,363.03	-	3,942.11	85.48	-
-	456,802.52	-	-	-	-
-	-	-	-	28,114.08	-
-	-	-	-	-	-
-	-	-	-	66,500.00	-
1,500.00	-	-	-	-	-
-	-	-	-	-	573,093.00
161,173.91	1,616,717.12	109,369.88	1,592,722.11	120,978.13	573,093.00
(78,497.30)	(450,986.58)	(109,347.89)	71,452.40	(55,955.04)	4,357,402.90
138,679.93	8,440,762.69	2,428,007.68	80,810.01	751,306.46	49,094,521.04
138,679.93	8,440,762.69	-	80,810.01	326,540.00	-
-	-	-	-	-	49,094,521.04
-	-	687,091.63	-	8,073.84	-
-	-	1,740,916.05	-	416,692.62	-
-	-	-	-	-	-
138,679.93	8,440,762.69	2,428,007.68	80,810.01	751,306.46	49,094,521.04

SAN DIEGO COUNTY WATER AUTHORITY

FINANCIAL REPORT

Exhibit C
STATEMENT OF REVENUE AND EXPENSE - GENERAL FUND
Year ended June 30, 1967
With comparative figures for 1966

NOTES TO FINANCIAL STATEMENTS

June 30, 1967

	1967	1966
WATER SALES:		
Gross revenue from water sales	\$ 6,327,074.23	6,187,345.01
Less irrigation credits	898,688.52	778,388.24
Net revenue from water sales	\$ 5,428,385.71	5,408,956.77
COST OF WATER SOLD:		
Water in storage, beginning of year	563,940.00	573,332.70
Water purchased	6,357,436.00	5,922,814.78
	6,921,376.00	6,496,147.48
Less irrigation credits	6,022,678.08	778,388.24
Storage and pumping charges	1,900.00	1,156.00
	6,023,678.08	5,718,943.00
Less water in storage, end of year	593,271.60	563,940.00
Cost of water sold	5,430,406.48	5,155,085.00
Gross margin from water sales	197,979.23	253,911.77
OTHER OPERATING REVENUE:		
Water transportation	510.00	1,036.00
Overhead reimbursement for engineering services for Metropolitan Water District	24,469.72	17,339.00
Gross operating revenue	222,948.95	212,338.00
OPERATING EXPENSE (Schedule I)	292,909.05	299,558.00
Operating revenue over (under) expense before depreciation	(69,960.10)	(18,220.00)
Depreciation expense	573,093.00	534,971.00
Operating revenue over (under) expense	(643,053.10)	(553,192.00)
NONOPERATING REVENUE:		
Property rentals	1,330.00	1,474.00
Earnings on investments	46,854.92	22,296.35
Sale of surplus items	1,197.60	725.00
Miscellaneous revenues, net of refunds	(681.27)	(26.70)
Total nonoperating revenue	48,701.25	24,469.65
PROVISION FOR DEPRECIATION, AN EXPENSE WHICH DID NOT REQUIRE CURRENT CASH OUTLAY	\$ 573,093.00	534,971.00
Excess of revenue over (under) expense - to surplus	\$ (21,241.43)	6,236.65

See accompanying notes to financial statements.

- (1) **Taxes Receivable**
Uncollected taxes receivable are fully reserved and are not included in the accompanying financial statements. The fund analysis of uncollected taxes receivable is as follows:

	1967	1966
Waterworks bonds, 1947, interest and sinking fund	2,699.74	3,452.45
U.S. Government contract fund	25,579.61	26,881.02
Waterworks bonds, 1957, interest and redemption fund	69,502.79	66,541.51
Capital improvement fund	3,791.34	1,839.42
Total uncollected taxes receivable	\$101,573.48	98,714.40

- (2) **Due from Metropolitan Water District**
The amount of \$8,426,269.66 due the Authority from Metropolitan Water District, as of June 30, 1967, represents the estimated balance of the District's share of the cost of the First San Diego Aqueduct. Upon final settlement, the first barrel is subject to adjustment by the U.S. Government. The current portion of this receivable at June 30, 1967 is \$456,802.52.

- (3) **Property, Plant, Equipment and Participation Rights**
Net equity in property, plant, equipment and participation right is shown as follows:

	1967	1966
Property, plant and equipment:		
Financed by:		
General obligation bonds	\$ 34,249,926.66	34,232,542.51
U.S. Government contract	14,949,858.27	14,949,858.27
Current revenues	5,775,022.33	5,683,822.19
Agencies contributions	729,683.76	682,374.43
	55,704,491.02	55,548,597.40
Less accumulated depreciation	5,398,037.20	4,832,933.53
	50,306,453.82	50,715,663.87
Construction work in progress	126,579.59	81,481.83
Participation rights in Metropolitan Water District*	60,334,444.57	55,649,233.87
Carried forward	\$ 110,767,477.98	106,446,379.57

SAN DIEGO COUNTY WATER AUTHORITY

NOTES TO FINANCIAL STATEMENTS (Continued)

	1967	1966
Brought forward	\$ 110,767,477.98	106,446,379.57
Less long-term debt:		
General obligation bonds payable - not due	34,015,000.00	34,465,000.00
Estimated balance on U.S. Government contracts	15,893,078.68	16,772,108.52
Annexation charges due Metropolitan Water District	<u>11,764,878.26</u>	<u>10,472,152.91</u>
	61,672,956.94	61,709,261.43
Net equity in property, plant, equipment and participation rights	\$ 49,094,521.04	44,737,118.14

*The recorded value and equity in participation rights in the Metropolitan Water District is as follows:

	1967	1966
Total recorded participation rights	\$ 60,334,444.57	55,649,233.87
Less unpaid balance of annexation charges due Metropolitan Water District	<u>11,764,878.26</u>	<u>10,472,152.91</u>
Net equity in participation rights	\$ 48,569,566.31	45,177,080.96

(4) Long-term Debt:
(a) General obligation bonds not due:

Schedule 6 presents in detail the outstanding bonded indebtedness. The following analysis presents the current principal maturity at June 30, 1967:

1947 waterworks bonds	\$ 100,000.00
1957 waterworks bonds:	
Series:	
A	50,000.00
B	50,000.00
C	80,000.00
D	60,000.00
E	<u>100,000.00</u>
	340,000.00
Total current portion of general obligation bonds	\$ 440,000.00

FINANCIAL REPORT

NOTES TO FINANCIAL STATEMENTS (Continued)

(b) Estimated balance due on U.S. Government contracts at June 30, 1967 is \$15,893,078.68. Of this amount \$8,426,269.66 is due to the Authority from Metropolitan Water District.

Balance due on contracts:

	Interest rate	Principal balance	Current portion
First barrel:			
Authority's share	None	\$ 2,687,500.00	250,000.00
Metropolitan Water District's share	None	<u>2,687,500.00</u>	<u>250,000.00</u>
		5,375,000.00	500,000.00
Second barrel:			
Authority's share	2.599%	4,779,309.02	172,227.32
Metropolitan Water District's share	2.599%	<u>5,738,769.66</u>	<u>206,802.52</u>
		10,518,078.68	379,029.84
Total		\$ 15,893,078.68	<u>879,029.84</u>

The amount payable on the U.S. Government contract relating to the first barrel of the First San Diego Aqueduct is subject to adjustment upon final settlement by the U.S. Government.

(c) The unpaid balance of annexation charges due the Metropolitan Water District at June 30, 1967 is \$11,764,878.26. The current portion of this liability at June 30, 1967 is \$593,031.57.

The total current portion of long-term debt set forth above at June 30, 1967 and June 30, 1966 is \$1,512,061.41 and \$2,038,304.49, respectively.

(5) Unissued Bonds

There are \$30,000,000.00 of unissued bonds in the waterworks bonds, 1966 improvement fund at June 30, 1967. These bonds may be sold at any time for the purpose authorized by the general election of June 7, 1966.

(6) Sale of Branch Pipeline

On November 13, 1963, the Authority entered into an agreement to sell a branch pipeline to the City of Occanside. The total price (\$100,000.00) is subject to purchase by the City in annual amounts of \$10,000.00 or more. During the year, the City purchased one-tenth of the pipeline for \$10,000.00 and additional sections will be sold for cash in future years.

Schedule 1
STATEMENT OF OPERATING EXPENSE
Year ended June 30, 1967
with comparative figures for 1966

	<u>1967</u>	<u>1966</u>
General and administration:		
Engineering department	\$ 51,135.62	45,544.69
Accounting department	18,232.31	16,778.02
Stenographic department	12,763.69	11,947.32
Legal services	12,000.00	12,000.00
Consulting services	-	3,000.00
Public relations	3,700.00	-
Overtime	91.41	447.50
Employee retirement - S. E. R. S.	10,881.63	9,404.51
Employee retirement - O. A. S. D. I.	6,214.55	4,046.95
Employee insurance - C. P. S.	2,566.32	2,325.12
Vacation and sick leave	10,342.09	11,661.65
Expense of directors	4,518.11	5,200.11
Expense of staff	2,755.96	2,262.81
Auditing	2,800.00	2,800.00
Utilities and telephone - San Diego	3,345.92	3,218.14
Postage	977.25	709.49
Printing, binding and reproduction	3,394.76	3,323.59
Trust fees and commissions	3,724.40	3,705.59
Insurance	8,482.12	7,236.11
Bonds - fidelity and surety	123.00	1,256.51
Memberships and subscriptions	1,418.96	1,013.90
Protection of Colorado River rights	3,485.00	3,540.00
Maintenance of office equipment	853.03	655.34
Maintenance of San Diego office	2,793.81	2,192.78
Contingencies	5,099.90	1,430.41
	<u>180,594.92</u>	<u>155,045.41</u>
Operations:		
System operations	16,031.89	14,429.48
Escondido office expense	3,252.90	2,218.30
Radio repair and spares	2,030.30	1,587.08
Office utilities and telephone	1,641.79	1,654.08
Control station utilities	4,311.41	1,932.60
Miscellaneous salaries	994.82	971.55
Overtime	2,332.78	1,160.99
	<u>32,595.94</u>	<u>22,479.25</u>
Maintenance:		
Maintenance supervision	5,415.36	5,325.59
Patrolling aqueducts	4,993.83	4,419.17
Pipeline - First Aqueduct	4,169.73	676.96
Pipeline - Second Aqueduct	1,716.03	894.19
Pipeline - other	1,653.68	725.11
Tunnels	43.66	583.20
Line structures	2,704.23	2,575.42
Control buildings	3,240.51	6,285.72
Buildings and grounds - Escondido	2,708.42	4,082.51
Access roads	10,931.65	6,351.18
Valve greasing and repairs	2,635.15	4,959.22
Meter and controls	3,130.59	2,186.76
Chlorination of aqueducts	43,425.70	41,372.31
Chlorine station, power	2,702.87	3,129.33
Chlorine equipment, maintenance	4,556.79	6,324.19
Chlorine station, building maintenance	229.92	2,301.50
Auto and truck - operation and maintenance	10,696.11	7,644.83
Construction equipment - operation and maintenance	3,603.61	2,803.07
Small tools and equipment	997.90	728.14
Miscellaneous operation of shop	1,625.87	1,104.53
Miscellaneous supplies	1,463.83	1,218.45
Miscellaneous salaries	4,618.56	7,536.86
Overtime	3,019.93	964.42
	<u>120,689.93</u>	<u>110,046.29</u>
Other expenses:		
Public information	3,236.04	16,063.96
Economic impact study	3,789.99	18,589.72
Engineering study of reservoir sites	5,710.44	295.83
Bond election expense	-	9,549.85
	<u>12,736.47</u>	<u>44,418.56</u>
Total operating expense before charges to other appropriations	346,627.26	335,229.61
Less charges to other appropriations	53,717.61	41,679.85
Total operating expense	<u>\$ 292,909.65</u>	<u>293,549.76</u>

FINANCIAL REPORT

Schedule 2

REVENUE

Year ended June 30, 1967
with comparative figures for 1966

Source	<u>1967</u>	<u>1966</u>
Taxes, secured, current levy	\$ 1,926,670.80	1,864,067.94
Taxes, unsecured, current levy	163,333.18	168,827.22
Taxes, secured, prior years' levies	53,132.04	43,146.15
Taxes, unsecured, prior years' levies	912.63	1,256.56
Penalties on delinquent taxes	6,098.58	4,926.87
Receipts in lieu of taxes	542.49	333.80
Sale of water	5,628,375.71	5,408,956.77
Miscellaneous tax sales	-	157.81
Earnings on investments	227,426.77	179,467.53
Proceeds from sale of pipeline (note 6)	10,000.00	10,000.00
Rentals	1,330.00	1,474.00
Contract payments from Metropolitan Water District	609,312.40	614,687.19
Use of Authority facilities	510.00	1,036.50
Sale of surplus items	1,195.60	725.00
Engineering services for Metropolitan Water District - overhead reimbursement	24,469.72	17,350.47
Miscellaneous revenues	270.00	480.00
	<u>\$ 8,653,579.92</u>	<u>8,316,893.81</u>
Totals		
Distribution by Funds		
General fund	5,702,074.68	5,451,800.38
Other funds:		
Reserve fund	16,127.49	18,205.09
Waterworks bonds, 1947, interest and sinking fund	82,676.61	112,492.28
U. S. Government contract fund	1,135,730.54	1,168,991.64
Waterworks bonds, 1957, interest and redemption fund	1,651,947.51	1,499,844.22
Capital improvement fund	65,023.09	65,560.20
	<u>2,951,505.24</u>	<u>2,865,093.43</u>
Total other funds		
Totals	<u>\$ 8,653,579.92</u>	<u>8,316,893.81</u>

See note 6 to basic financial statements.

SAN DIEGO COUNTY WATER AUTHORITY

FINANCIAL REPORT

Schedule 3

APPROPRIATIONS AND EXPENDITURES

Year ended June 30, 1967

Work Order Number	Purpose	Prior Years' Appropriation Carried Over	Appropriations 1966-67
238	Construction of cross connection	\$ 15,000.00	-
254	Service connection, Valley Center Station 1367-57	802.23	-
256	Ilio San Diego interconnection with San Diego County Water Authority, Station 259-00	2,776.61	-
257	Service connection, No. 2, Escondido Station 1675-38: City of Escondido Authority	9,625.77 3,075.80	-
258	Engineering services for Metropolitan Water District Less reimbursements	93,500.00 -	-
259	Preliminary engineering, Second Barrel of Second San Diego Aqueduct	31,427.10	732,500.00
260	Four telemetering instruments, Second San Diego Aqueduct	3,361.63	-
261	Legal action against certain pipe companies for conspiracy and price fixing	141,158.11	-
263	Public information	3,336.04	-
264	Report of San Diego County Water Authority economic impact	4,490.28	-
265	Engineering study of reservoir sites	7,204.17	-
267	Revision to existing No. 1 service connection to serve Poway MWD at Station 475-00	-	13,500.00
268	Installation of eight telemetry and supervisory control units	-	24,200.00
269	Construction of new operations building, shop building and site development together with architectural fees and landscaping	-	255,040.00
Budget fiscal year 1966-67:			
	General fund	-	6,529,350.00
	U.S. Government contract fund	-	1,158,551.57
	Waterworks bonds, 1947, interest and sinking fund	-	159,500.00
	Waterworks bonds, 1957, interest and redemption fund	-	1,588,780.00
		315,758.76	10,561,421.57
	Less advances by agencies	10,428.00	13,500.00
	Total Authority	\$305,330.76	10,547,921.57
Distribution by Funds			
General fund		198,530.49	6,529,350.00
Other funds:			
Reserve fund		141,158.11	-
Waterworks bonds, 1947, interest and sinking fund		-	159,500.00
U.S. Government contract fund		-	1,158,551.57
Waterworks bonds, 1957, improvement fund		49,788.75	750,700.00
Waterworks bonds, 1957, interest and redemption fund		-	1,588,780.00
Capital improvement fund		5,852.41	335,040.00
Total other funds		196,890.27	4,018,571.57
Total		\$305,330.76	10,547,921.57

Schedule 3

APPROPRIATIONS AND EXPENDITURES

Year ended June 30, 1967

Expenditures 1966-67	Cancelled Appropriations	Unexpended Appropriations June 30, 1967	Encumbrances	Unencumbered Balance
5,848.24	9,151.76	-	-	-
30.84	771.39	-	-	-
-	-	2,776.61	-	2,776.61
(1,160.61)	10,786.38	-	-	-
3,075.80	-	-	-	-
221,837.66	-	-	-	-
(221,837.66)	-	93,500.00	-	93,500.00
89,538.44	-	683,388.66	-	683,388.66
2,486.17	875.48	-	-	-
21,378.24	-	119,780.87	-	119,780.87
3,336.04	-	-	-	-
3,789.30	700.29	-	-	-
5,710.44	-	1,493.73	-	1,493.73
6,967.10	6,532.90	-	-	-
29,497.63	-	3,702.97	-	3,702.97
23,202.77	-	331,837.23	326,540.00	5,297.23
5,758,467.32	770,882.48	-	-	-
1,158,551.57	-	-	-	-
159,500.00	-	-	-	-
1,588,780.00	-	-	-	-
8,840,989.58	799,700.68	1,236,480.07	326,540.00	909,940.07
5,837.33	18,090.67	-	-	-
8,835,162.25	781,610.01	1,236,480.07	326,540.00	909,940.07
5,771,363.99	771,582.77	94,993.73	-	94,993.73
21,378.24	-	119,780.87	-	119,780.87
159,500.00	-	-	-	-
1,158,551.57	-	-	-	-
169,389.88	16,027.24	687,091.63	-	687,091.63
1,588,780.00	-	-	-	-
26,278.57	-	331,613.84	326,540.00	5,073.84
3,063,858.26	16,027.24	1,141,486.31	326,540.00	814,946.31
8,835,162.25	781,610.01	1,236,480.07	326,540.00	909,940.07

SAN DIEGO COUNTY WATER AUTHORITY

FINANCIAL REPORT

Schedule 4
SUMMARY STATEMENT OF CASH RECEIPTS AND DISBURSEMENTS
Year ended June 30, 1967

	Cash Balance July 1, 1966	Cash		Cash Disbursements	Interfund Transfers		Cash Balance June 30, 1967
		Receipts	Disbursements		In	Out	
General fund	\$ 850,188.96	9,901,406.92	10,362,594.23	649,797.47	538,330.70	562,468.42	
Reserve fund	751,713.51	1,863,464.29	1,191,194.37	154,000.00	855,010.31	722,973.42	
Waterworks bonds, 1947, interest and sinking fund	150,677.23	805,641.86	798,594.53	115,193.67	168,000.00	134,679.63	
U. S. Government contract fund	8,677.09	1,393,465.93	1,788,203.12	325,553.11	123,000.00	14,493.03	
Waterworks bonds, 1957, improvements fund	2,539,269.44	4,948,119.71	5,658,103.46	2,588.22	4,877.06	2,436,196.85	
Waterworks bonds, 1957, interest and redemption fund	1,194.36	2,094,375.23	2,550,649.53	690,000.00	174,500.00	60,419.76	
Capital improvement fund	606,374.38	1,320,937.61	1,275,066.36	500.00	74,116.40	378,329.23	
Totals	\$ 4,937,995.27	22,527,411.57	23,021,646.20	1,937,634.47	1,937,634.47	4,443,760.64	

TREASURY CASH ON DEPOSIT JUNE 30, 1967

Demand deposits:	
Southern California First National Bank (Main Office)	\$ 325,225.83
Time deposits:	
San Diego Trust and Savings Bank (Main Office)	\$ 100,000.00
United States National Bank (Lemon Grove Branch)	1,575,000.00
Security First National Bank (College Branch)	500,000.00
Southern California First National Bank (La Mesa Branch)	2,200,000.00
Deposits in transit	33,380.16
	<u>4,733,616.39</u>
Less outstanding warrants	<u>289,855.95</u>
Treasury cash, June 30, 1967, as above ..	<u>\$4,443,760.64</u>

Schedule 5
INVESTMENTS
June 30, 1967

Description	Date Acquired	Yield	Maturity Date	Maturity Value	Book Value*
U. S. Treasury bonds	1/15/65	4%	2/15/70	\$ 190,000.00	190,000.00
U. S. Treasury bonds	6/27/67	3.10%	7/20/67	300,000.00	299,405.83
				<u>\$ 490,000.00</u>	<u>489,405.83</u>
 <u>Distribution by Funds</u>					
General fund				366,432.94	365,987.32
Reserve fund				123,567.06	123,418.51
				<u>\$ 490,000.00</u>	<u>489,405.83</u>

*Approximate market value \$484,140.00.

SAN DIEGO COUNTY WATER AUTHORITY

Schedule 6

STATEMENT OF BONDS PAYABLE

June 30, 1967

Description	Rate of Interest	Date of	
		Issue	Maturity
Waterworks bonds, 1947	2%	1947	1968-71
Waterworks bonds, 1957	1%-6%	1957	1968-94
Waterworks bonds, 1966			

BONDED DEBT MATURITIES

Fiscal Year	Waterworks Bonds, 1947			Principal
	Principal	Interest	Total	
1967-68	\$ 100,000.00	7,000.00	107,000.00	340,000.00
1968-69	100,000.00	5,000.00	105,000.00	420,000.00
1969-70	100,000.00	3,000.00	103,000.00	480,000.00
1970-71	100,000.00	1,000.00	101,000.00	560,000.00
1971-72	-	-	-	690,000.00
1972-73	-	-	-	770,000.00
1973-74	-	-	-	830,000.00
1974-75	-	-	-	890,000.00
1975-76	-	-	-	970,000.00
1976-77	-	-	-	1,070,000.00
1977-78	-	-	-	1,140,000.00
1978-79	-	-	-	1,195,000.00
1979-80	-	-	-	1,260,000.00
1980-81	-	-	-	1,330,000.00
1981-82	-	-	-	1,400,000.00
1982-83	-	-	-	1,470,000.00
1983-84	-	-	-	1,540,000.00
1984-85	-	-	-	1,620,000.00
1985-86	-	-	-	1,680,000.00
1986-87	-	-	-	1,740,000.00
1987-88	-	-	-	1,815,000.00
1988-89	-	-	-	1,880,000.00
1989-90	-	-	-	1,960,000.00
1990-91	-	-	-	2,040,000.00
1991-92	-	-	-	2,100,000.00
1992-93	-	-	-	2,165,000.00
1993-94	-	-	-	260,000.00
Totals	\$ 400,000.00	16,000.00	416,000.00	33,615,000.00

Waterworks bonds, 1947, dates of maturity

January 1 - Bonds and interest coupons
July 1 - Interest coupons only

See notes 4 and 5 to basic financial statements.

FINANCIAL REPORT

Schedule 6

STATEMENT OF BONDS PAYABLE

June 30, 1967

Bonds		
Authorized	Issued	Outstanding
\$ 2,000,000.00	\$ 2,000,000.00	\$ 400,000.00
35,000,000.00	35,000,000.00	33,615,000.00
30,000,000.00	-	-

BONDED DEBT MATURITIES

Waterworks bonds, 1957		Total		
Interest	Total	Principal	Interest	Total
1,272,580.00	1,612,580.00	440,000.00	1,279,580.00	1,719,580.00
1,254,180.00	1,674,180.00	520,000.00	1,259,180.00	1,779,180.00
1,231,180.00	1,711,180.00	580,000.00	1,234,180.00	1,814,180.00
1,204,580.00	1,764,580.00	660,000.00	1,205,580.00	1,865,580.00
1,176,380.00	1,866,380.00	690,000.00	1,176,380.00	1,866,380.00
1,145,705.00	1,915,705.00	770,000.00	1,145,705.00	1,915,705.00
1,111,505.00	1,941,505.00	830,000.00	1,111,505.00	1,941,505.00
1,078,425.00	1,968,425.00	890,000.00	1,078,425.00	1,968,425.00
1,043,625.00	2,013,625.00	970,000.00	1,043,625.00	2,013,625.00
1,005,600.00	2,075,600.00	1,070,000.00	1,005,600.00	2,075,600.00
963,525.00	2,103,525.00	1,140,000.00	963,525.00	2,103,525.00
918,435.00	2,113,435.00	1,195,000.00	918,435.00	2,113,435.00
870,910.00	2,130,910.00	1,260,000.00	870,910.00	2,130,910.00
825,615.00	2,155,615.00	1,330,000.00	825,615.00	2,155,615.00
778,090.00	2,178,090.00	1,400,000.00	778,090.00	2,178,090.00
727,070.00	2,197,070.00	1,470,000.00	727,070.00	2,197,070.00
673,475.00	2,213,475.00	1,540,000.00	673,475.00	2,213,475.00
617,305.00	2,237,305.00	1,620,000.00	617,305.00	2,237,305.00
557,640.00	2,237,640.00	1,680,000.00	557,640.00	2,237,640.00
495,775.00	2,235,775.00	1,740,000.00	495,775.00	2,235,775.00
431,492.00	2,246,492.00	1,815,000.00	431,492.00	2,246,492.00
364,420.00	2,244,420.00	1,880,000.00	364,420.00	2,244,420.00
294,700.00	2,254,700.00	1,960,000.00	294,700.00	2,254,700.00
222,012.00	2,262,012.00	2,040,000.00	222,012.00	2,262,012.00
146,357.00	2,246,357.00	2,100,000.00	146,357.00	2,246,357.00
68,417.00	2,233,417.00	2,165,000.00	68,417.00	2,233,417.00
8,840.00	268,840.00	260,000.00	8,840.00	268,840.00
20,487,838.00	54,102,838.00	34,015,000.00	20,503,838.00	54,518,838.00

Waterworks bonds, 1957, dates of maturity

February 1 - Bonds and interest coupons
August 1 - Interest coupons only

SAN DIEGO COUNTY WATER AUTHORITY

FINANCIAL REPORT

Schedule 7

PROPERTY, PLANT AND EQUIPMENT AND ACCUMULATED DEPRECIATION

Year ended June 30, 1967

	Date Acquired	Asset		Rate or Life
		Balance July 1, 1966	Balance June 30, 1967	
First San Diego Aqueduct:				
First barrel (Authority's share)	12/11/47	\$ 6,807,246.24	6,807,246.24	100 yrs.
Second barrel (Authority's share)	2/28/55	8,056,660.61	8,056,660.61	100 yrs.
Access roads	6/30/55	14,340.03	14,340.03	Not depr.
Rights of way	Various	297,652.61	297,652.61	Not depr.
Service connections	Various	201,477.14	209,746.47	Various
		<u>15,477,776.05</u>	<u>15,506,647.36</u>	
Second San Diego Aqueduct:				
First barrel and improvements	7/ 1/50	33,249,728.94	33,249,728.94	100 yrs.
Access roads	Various	25,134.73	26,890.87	Not depr.
Rights of way	Various	315,876.04	315,876.04	Not depr.
Chlorination station	4/ 5/61	133,464.26	133,464.26	94 yrs.
Cross connections	6/30/66	3,229,299.61	3,294,917.21	97 yrs.
Service connections	Various	515,855.19	518,815.19	Various
		<u>37,472,358.67</u>	<u>37,538,873.61</u>	
La Mesa Sweetwater extension:				
Pipeline	12/31/48	1,449,147.44	1,449,147.44	100 yrs.
Rights of way	12/31/48	14,139.99	14,139.99	Not depr.
Service connection	12/31/48	2,622.04	2,622.04	97 yrs.
		<u>1,465,909.47</u>	<u>1,465,909.47</u>	
Fallbrook Oceanside line (note G):				
Pipeline	12/31/48	757,884.40	737,031.64	100 yrs.
Rights of way	12/31/48	7,907.39	7,907.39	Not depr.
Service connection	1/22/52	185.10	185.10	5 yrs.
		<u>765,976.89</u>	<u>744,917.24</u>	
San Diego Headquarters:				
Building and improvements	6/30/58	129,101.82	129,101.82	50 yrs.
Land	6/30/58	59,000.00	59,000.00	Not depr.
		<u>179,101.82</u>	<u>179,101.82</u>	
Escondido Headquarters:				
Building and improvements	1/26/48	42,095.02	42,095.02	50 yrs.
Land	1/26/48	5,251.00	5,251.00	Not depr.
		<u>47,346.02</u>	<u>47,346.02</u>	
Furniture and fixtures	Various	10,838.28	11,124.49	Various
Office equipment	Various	19,856.16	20,291.24	Various
Engineering equipment	Various	3,076.56	3,744.80	Various
Automotive equipment	Various	74,685.31	84,918.36	Various
Telemetry	6/13/67	-	15,624.32	10 yrs.
Miscellaneous equipment	Various	31,166.38	26,909.25	Various
		<u>\$ 55,548,597.40</u>	<u>\$5,794,491.02</u>	

*Analysis of changes in property, plant and equipment and accumulated depreciation:

Additions	181,203.66
Less retirements	25,310.94
Additions, net of retirements	155,892.72
Add increase in construction work in progress	43,097.26
Net increase	\$ 209,991.38

See note 3 to basic financial statements.

Schedule 7

PROPERTY, PLANT AND EQUIPMENT AND ACCUMULATED DEPRECIATION

Year ended June 30, 1967

	Rate or Life	Accumulated Depreciation		Cont. Loss Accumulated Depreciation	
		Balance July 1, 1966	Balance June 30, 1967	1967	1966
First San Diego Aqueduct:					
First barrel (Authority's share)	100 yrs.	1,271,532.12	1,342,563.04	5,464,683.20	5,535,314.12
Second barrel (Authority's share)	100 yrs.	816,668.24	81,059.04	7,058,522.33	7,129,991.57
Access roads	Not depr.	-	-	14,340.65	14,340.65
Rights of way	Not depr.	-	-	297,653.41	297,653.41
Service connections	Various	25,486.04	32,879.43	321,907.91	266,291.10
		<u>2,224,687.40</u>	<u>155,063.55</u>	<u>13,157,516.43</u>	<u>13,253,696.65</u>
Second San Diego Aqueduct:					
First barrel and improvements	100 yrs.	2,657,883.84	327,777.68	2,395,061.32	30,854,067.42
Access roads	Not depr.	-	-	26,890.87	23,154.73
Rights of way	Not depr.	-	-	315,876.04	313,476.04
Chlorination station	94 yrs.	6,816.79	1,390.68	125,166.75	126,547.17
Cross connections	97 yrs.	-	34,718.64	3,229,299.57	3,229,299.61
Service connections	Various	22,245.40	5,059.92	491,501.17	496,561.09
		<u>2,687,646.03</u>	<u>378,916.92</u>	<u>2,656,042.93</u>	<u>35,072,820.46</u>
La Mesa Sweetwater extension:					
Pipeline	100 yrs.	350,150.78	11,237.36	273,488.14	1,175,659.30
Rights of way	Not depr.	-	-	14,139.99	14,139.99
Service connection	97 yrs.	398.20	57.12	2,195.72	2,223.94
		<u>350,549.98</u>	<u>14,364.48</u>	<u>273,913.95</u>	<u>1,191,996.91</u>
Fallbrook Oceanside line (note G):					
Pipeline	100 yrs.	130,281.08	(79.40)	130,201.62	609,639.22
Rights of way	Not depr.	-	-	-	7,907.39
Service connection	5 yrs.	195.40	-	185.40	-
		<u>130,476.48</u>	<u>(79.40)</u>	<u>130,297.02</u>	<u>609,520.24</u>
San Diego Headquarters:					
Building and improvements	50 yrs.	20,738.10	2,932.80	23,671.29	105,439.62
Land	Not depr.	-	-	-	59,000.00
		<u>20,738.10</u>	<u>2,932.80</u>	<u>23,671.29</u>	<u>164,439.62</u>
Escondido Headquarters:					
Building and improvements	50 yrs.	11,061.81	765.26	11,847.17	30,247.85
Land	Not depr.	-	-	-	5,251.00
		<u>11,061.81</u>	<u>765.26</u>	<u>11,847.17</u>	<u>35,498.85</u>
Furniture and fixtures	Various	10,089.59	485.73	10,575.22	548.77
Office equipment	Various	12,231.45	1,573.13	13,804.57	11,486.67
Engineering equipment	Various	3,299.46	939.37	3,239.83	2,503.97
Automotive equipment	Various	51,625.23	6,848.94	58,274.19	58,636.17
Telemetry	10 yrs.	-	56.00	-	15,568.52
Miscellaneous equipment	Various	17,868.30	3,217.04	21,085.34	15,423.91
		<u>1,827,933.33</u>	<u>363,103.67</u>	<u>1,398,037.20</u>	<u>90,206,513.62</u>

\$ 565,182.07

COMMENTS

The San Diego County Water Authority was organized June 9, 1944 under the California County Water Authority Act. The Authority was originally created for the primary purpose of providing and maintaining means of transmitting Colorado River water to its member agencies. The San Diego County Water Authority is a member agency of the Metropolitan Water District.

The debt service funds and the reserve fund unappropriated balances are usually at their highest levels as of June 30 each year. Debt service cash requirements are quite substantial prior to the time the Authority begins receiving its tax receipts. Examples of monthly debt service requirements are as follows:

<u>Description</u>	<u>Month</u>	<u>Approximate Amount Required</u>
Waterworks bonds, 1957, interest	July	\$ 636,000
U. S. Government contract, payments net of Metropolitan Water District share	August	75,000
"	September	62,000
"	November	75,000
"	December	62,000
Waterworks bonds, 1947:		
Interest	December	4,000
Principal		100,000
Total debt service cash requirements for July through December		\$ 1,014,000

The Authority receives substantial tax receipts during December and January and again during April and May, and also current unsecured taxes of approximately \$70,000 in July.

Although the cash requirements relate to debt service, and the primary purpose of the reserve fund is to provide a cash reserve pending receipt of taxes; the reserve fund may also be required to finance, temporarily, operating expenses and the purchase of water.

Following is a description of the functions, restrictions and uses of each of the San Diego County Water Authority funds:

General Fund

This fund was created to be available for the financing of current operations, maintenance, and the purchase of water from the Metropolitan Water District. The principal revenue of the fund is from a surcharge of \$1.25 per acre foot paid by each agency over the cost of the water purchased from the Metropolitan Water District.

For many years, the surcharge was \$2.00 per acre foot. Effective September 1, 1964, the surcharge was reduced to \$1.25 per acre foot which has been adequate to meet all general fund expense.

Reserve Fund

This fund was established as a permanent revolving fund in an amount not to exceed \$900,000. The fund is required to provide resources pending the collection of taxes. The resources of the fund may be used for the following purposes:

1. Payment of current debt service requirements and expenses of the Authority, if required.
2. Payment of water purchases prior to collection of the charges for water delivered to our member agencies.
3. Immediate repairs to, or reconstruction of, any part of the Authority system in the event of damage or partial destruction thereto from unpredictable causes, which interrupt or threaten to interrupt the continuous flow of water to the member agencies of the Authority.

Waterworks Bonds, 1947, Interest and Sinking Fund

This fund is used to service the \$2,000,000 bond issue authorized and sold in 1947. Revenues are derived from taxes and interest earnings. In order to comply with the County Water Authority Act, a sinking fund reserve was established.

U. S. Government Contract Fund

This fund was established to service the debt to the U. S. Government for construction of the First and Second Barrels of the San Diego Aqueduct acquired by Lease and Purchase Contract No. 13300.

Revenues of this fund include tax collections and receipts from the Metropolitan Water District for its share of construction costs pursuant to the purchase agreement for the northerly section of the aqueduct within San Diego County.

Waterworks Bonds, 1957, Improvement Fund

This fund was established to receive all moneys obtained through the sale of the 1957 series of waterworks bonds.

The resources of this fund may be used for improvements to the Authority system as authorized by the bond election. Current and proposed projects relate to construction of the Second Barrel of the Second Aqueduct for which preliminary studies are now being made.

Waterworks Bonds, 1957, Interest and Redemption Fund

This fund was established to provide moneys to redeem the 1957 waterworks bond issue. Revenues of the fund result primarily from taxes.

Capital Improvement Fund

This fund was established in 1952 to receive all moneys resulting from the terms and conditions for the annexation of any area to the Authority including special taxes, receipts in lieu of special taxes and cash remittances. The resources of this fund are available for the construction of capital improvements to the Authority and for the purpose of meeting obligations as a result of the terms and conditions of annexation. The resources of this fund are not available for operations and maintenance nor are they to be considered for the purpose of any tax levy in determining budgetary requirements.

As of June 30, 1967, the resources of this fund included annexation charges which are to be paid by the member agencies in varying amounts over a ten-year period.

SAN DIEGO COUNTY WATER AUTHORITY

FINANCIAL REPORT

Table F-1
TAX ASSESSMENTS AND TAX COLLECTIONS
Fiscal years 1945-46 to 1966-67

	Tax Assessments to Date	Adjustments to Tax Assessments	Tax Collections	Interest and Penalties	Tax on Options	Receipts in Lieu of Taxes	Miscellaneous Tax Sales	Less Refunds	Net Total Collections	Uncollected Taxes Receivable at June 30, 1967
Fatherok Public Utility District	\$ 146,137.35	(230.30)	145,907.05	589.33	-.03	3,425.00	17.26	70.17	149,341.97	742.14
Malix Irrigation District	2,125,144.97	(2,144.13)	2,123,000.84	6,434.64	49.04	4,159.74	631.46	622.71	2,127,140.60	12,461.21
City of National City	128,460.14	(148.32)	128,311.82	1,315.33	5.30	6,326.71	61.26	225.24	135,943.16	2,494.24
City of Oceanside	179,711.00	(128.57)	179,582.43	1,315.33	5.11	2,544.13	61.26	452.03	183,119.16	2,466.21
City of San Diego	13,984,233.45	(2,122.82)	13,982,110.63	21,125.98	42.25	131,241.64	2,124.24	42,293.03	14,032,164.45	61,538.73
Rancho Municipal Water District	111,051.63	382.25	111,433.88	321.97	621.19	2,895.62	1.44	5.43	115,647.49	822.20
Santa Fe Irrigation District	239,274.28	1,164.70	240,439.00	1,275.46	3.68	2,282.45	1,091.14	745.07	244,517.66	703.17
San Diego Irrigation District	284,785.60	(133.67)	284,651.93	975.19	3.68	1,123.14	121.75	260.69	286,357.38	1,427.16
City of Escondido	383,668.47	42.45	383,710.92	596.71	-	13.64	25.34	64.08	384,307.58	3,171.73
South Bay Irrigation District	1,274,976.53	(1,909.69)	1,273,066.84	2,372.32	-.20	14,751.64	76.33	12,323.64	1,285,163.23	5,369.09
Rancho Municipal Water District	125,465.68	1,422.17	126,887.85	361.56	-	20,379.27	-.72	5.20	127,262.31	2,942.50
Poway Municipal Water District	141,225.13	(282.56)	140,942.57	737.39	-	13.02	6.88	14.64	137,250.36	4,476.14
Buena Vista Municipal Water District	633,632.75	1,453.14	635,085.89	1,914.94	1.73	10,794.13	71.79	222.23	646,176.39	3,439.39
Rincon Del Duablo Municipal Water District	254,483.23	545.34	255,028.57	796.14	-	66,795.86	-.54	35.07	255,013.57	1,432.43
Carlsbad Municipal Water District	435,424.63	(2,440.69)	432,983.94	431,425.78	-	30,176.74	9.10	315.90	464,791.44	2,535.25
Valley Center Municipal Water District	182,109.42	(185.50)	181,923.92	416.39	-	11.29	18.29	4.22	181,642.63	684.03
Rio San Diego Municipal Water District	436,227.00	(1,897.43)	434,329.57	2,132.93	-.65	343.11	99.56	248.02	435,345.00	3,199.00
City Municipal Water District	245,716.26	(194.62)	245,521.64	792.34	-	794.36	29.53	124.02	246,923.31	2,454.60
Clarendon Municipal Water District	35,975.74	173.10	36,148.84	61.93	-	794.36	-	8.21	36,438.65	2,422.32
City of Del Mar	85,271.21	1,779.83	87,051.04	407.13	-	500.00	1.03	41.65	87,980.35	1,111.89
Yuma Municipal Water District	21,185.80	91.88	21,277.68	3.89	-	500.00	-	2.29	21,379.67	217.42
De Luz Municipal Water District										
Total Member Agencies	\$2,974,893.56	(5,543.67)	2,969,349.89	45,396.95	972.63	313,258.33	4,505.63	58,335.63	3,027,374.94	101,573.48
Withdrawn areas	4,189.65	29.94	4,219.59	11.48	-.15	136.54	2.40	3.25	4,234.42	-
Totals	\$2,983,084.55	(5,513.73)	2,983,571.48	45,408.43	972.48	313,442.04	4,508.44	58,341.40	3,031,709.26	101,573.48

Table F-2

ASSESSED VALUATIONS AND TAX RATES
Fiscal years 1945-46 to 1966-67

Fiscal Year	Secured Property	Public Utilities	Unsecured Property	Total	Tax Rate Per \$100	
					Secured	Unsecured
1945-46	\$ 212,082,975	28,253,700	29,960,130	270,296,805	0.04	-
1946-47	208,715,150*	29,433,450	30,665,910	268,814,510	0.04	0.04
1947-48	233,379,990	32,740,680	40,977,850	307,298,520**	0.14	0.04
1948-49	254,227,570	37,482,020	47,177,300	338,886,890	0.14	0.14
1949-50	290,351,875	42,429,140	45,743,200	378,524,215	0.10	0.14
1950-51	306,164,930	43,595,730	44,717,740	394,478,400	0.10	0.10
1951-52	344,620,030	48,452,940	50,904,035	443,977,005	0.10	0.10
1952-53	382,948,860	53,208,220	63,996,330	500,153,410	0.12	0.10
1953-54	490,769,350	63,092,050	69,147,150	622,948,550	0.10	0.12
1954-55	546,272,880	69,243,550	79,629,790	695,146,220	0.10	0.10
1955-56	627,062,960	87,485,390	79,936,450	794,484,800	0.09	0.10
1956-57	680,824,400	101,224,260	97,950,800	879,999,460	0.09	0.09
1957-58	761,088,330	111,151,890	128,785,440	1,001,025,660	0.09	0.09
1958-59	865,283,080	128,479,290	128,124,720	1,121,887,090	0.10	0.09
1959-60	979,491,050	145,317,290	134,846,730	1,259,655,070	0.11	0.10
1960-61	1,116,723,830	165,666,720	159,954,740	1,442,345,290	0.11	0.11
1961-62	1,220,810,650	191,276,650	155,149,890	1,567,237,190	0.11	0.11
1962-63	1,272,506,330	201,245,370	154,989,440	1,628,741,140	0.11	0.11
1963-64	1,340,197,170	209,793,780	159,714,930	1,709,705,880	0.11	0.11
1964-65	1,423,375,590	213,352,470	151,686,520	1,788,414,580	0.11	0.11
1965-66	1,511,967,750	212,695,040	155,417,220	1,879,990,010	0.11	0.11
1966-67	1,567,290,460	212,223,530	147,740,730	1,927,254,720	0.11	0.11

*City of Coronado and Ramona Irrigation District secured assessed valuations not included in this or subsequent tax levies by the Authority, having withdrawn from the Authority prior to 1946-47.

**City of Coronado and Ramona Irrigation District not included in this or subsequent total valuation.

Table F-3
TAX LEVIES AND TAX COLLECTIONS
Fiscal years 1945-46 to 1966-67

Fiscal Year	Tax Levy	Collection of current year's taxes		Percentage of Levy Collected During Fiscal Year	Adjustments to prior years' levies	Collection of prior years' taxes during fiscal year	Total Tax Collections	Ratio of Total Collections to Adjusted Tax Levy **	Accumulated Delinquent Taxes	Ratio of Accumulated Delinquent Taxes to Adjusted Tax Levy **
		During Fiscal Year	Fiscal Year							
1945-46	\$ 96,131.33	94,656.51	98.47%	\$ -	-	94,656.51	98.47%	\$ 1,474.82	1.53%	
1946-47	107,808.89	105,753.78	98.09	-	1,090.25	106,844.03	99.11	2,439.68	2.26	
1947-48	389,591.57	381,563.14	97.94	-	1,842.72	383,445.86	98.42	8,555.39	2.20	
1948-49	474,620.78	459,504.39	96.84	-	5,916.41	465,420.80	98.08	17,685.37	3.73	
1949-50	401,112.07	392,732.15	97.91	329.58	13,342.55	406,074.70	101.15	13,032.32	3.25	
1950-51	387,970.61	390,274.43	98.07	373.44	8,217.52	398,492.25	100.03	12,904.12	3.24	
1951-52	450,405.19	441,242.12	97.97	978.87	7,699.55	448,941.67	99.46	15,346.51	3.40	
1952-53	594,603.48	555,417.35	93.46	(1,140.34)	12,367.93	597,985.28	100.76	10,524.37	1.82	
1953-54	652,335.08	640,239.42	98.15	4,213.42	9,942.33	650,181.75	99.03	17,191.12	2.62	
1954-55	709,675.59	695,200.64	97.96	1,295.13	12,638.30	707,838.94	99.56	20,326.20	2.86	
1955-56	803,373.25	785,734.26	97.81	(2,089.58)	12,140.64	800,574.90	99.55	20,726.97	2.59	
1956-57	874,774.45	861,461.66	98.48	576.90	13,056.01	874,517.67	99.90	21,560.65	2.46	
1957-58	963,006.37	946,445.53	98.08	938.17	12,890.09	959,335.64	99.31	28,189.75	2.92	
1958-59	1,178,883.91	1,157,265.08	98.17	(5,274.26)	13,347.45	1,170,613.43	99.30	36,462.23	3.09	
1959-60	1,496,270.69	1,465,277.37	98.05	(9,720.61)	16,647.50	1,484,925.37	99.58	42,533.29	2.97	
1960-61	1,624,733.20	1,586,169.31	97.63	(2,276.45)	21,301.88	1,607,671.39	99.48	50,874.49	3.15	
1961-62	1,763,783.54	1,713,375.76	97.44	(3,688.71)	31,477.80	1,750,033.56	99.35	62,330.62	3.54	
1962-63	1,816,449.25	1,775,832.23	97.77	(268.07)	38,134.68	1,814,066.93	100.07	61,603.63	3.37	
1963-64	1,910,019.05	1,862,973.83	97.54	(6,588.60)	42,586.95	1,899,799.44	99.48	70,975.17	3.72	
1964-65	2,000,667.76	1,948,853.84	97.44	2,503.88	44,754.42	1,991,450.79	99.80	73,603.54	3.66	
1965-66	2,101,623.36	2,033,032.16	96.76	(7,164.70)	54,333.39	2,077,616.58	98.78	98,714.40	4.69	
1966-67	2,154,994.25	2,090,637.08	97.01	(25,991.93)	411,034.58	2,501,671.66	99.87	101,573.48	4.73	
Totals	\$ 22,903,543.37	22,364,943.38				22,775,977.06		\$ 1,927,254,740.00		

*Including adjustments of current year's levy.

**Including adjustments to current and prior years' levies.

Table F-4

LEGAL DEBT MARGIN

June 30, 1967

Assessed valuation 1966-67 (Table F-2)
Debt limit (15% of assessed valuation)*
Amount of debt applicable to debt limit:
General obligation bonds**:
1947 waterworks bonds
1957 waterworks bonds, Series A
1957 waterworks bonds, Series B
1957 waterworks bonds, Series C
1957 waterworks bonds, Series D
1957 waterworks bonds, Series E

\$ 406,000.00
7,203,000.00
7,230,000.00
7,720,000.00
6,730,000.00
4,730,000.00

Total bonded debt \$ 34,013,000.00

Contractual obligations:
To U. S. Government on First San Diego Aqueduct:
On first barrel
On second barrel

\$ 3,375,000.00
10,515,078.68

To Metropolitan Water District on annexation charges

15,893,078.68

Total contractual obligations

11,704,878.26

Total gross indebtedness

27,657,956.94

Less portion of fund balances available for debt redemption:

Waterworks bonds, 1947, interest and sinking fund
U. S. Government contract fund
Waterworks bonds, 1957, interest and redemption fund

134,679.93
14,493.03

209,592.72

Net indebtedness

61,463,364.22

Legal debt margin

\$ 227,624,546.78

*Sec. 5(7), County Water Authority Act.
**A bond election was held on June 7, 1966 at which time a \$30,000,000 bond issue was approved. These bonds were unissued at June 30, 1967.

SAN DIEGO COUNTY WATER AUTHORITY

Table F-5
INSURANCE COVERAGE
June 30, 1967

	Amount or limit	Company
Excess liability, property damage, and products liability	\$ 2,900,000	Eagle Star Insurance Company
Select liability, personal injury property damage, bodily injury, including automobile. Deductible of \$1,000 on property damage liability, except automobiles	100,000	
Medical payments, each payment	2,000	Great American Insurance Co.
Buildings and equipment - Escondido and San Diego	161,400	Great American Insurance Co.
Office block policy - unscheduled office equipment	43,120	Federal Insurance Company
Chlorination station - optional peril policy	106,000	Great American Insurance Co.
Dwelling - Escondido	12,000	Great American Insurance Co.
Contractor's equipment	54,510	Industrial Indemnity Insurance Co.
Automobile - comprehensive, collision \$100 deductible	Actual cash value	Great American Insurance Co.
Official bonds:		
L. R. Barzell, General Manager and Chief Engineer	25,000	Great American Insurance Co.
H.C. Griffen, Treasurer	25,000	Great American Insurance Co.
Public employees' blanket bond	50,000	Great American Insurance Co.
Travel accident - employees and directors:		
Death benefits, etc.	50,000	
Medical	5,000	
Aggregate	600,000	Travelers Insurance Company
Workmen's compensation	Statutory	State Compensation Insurance Fund

FINANCIAL REPORT

Table F-6
SAN DIEGO COUNTY WATER AUTHORITY
ANNEXATION CHARGES, ASSESSMENTS AND BALANCES

Area	Date of Annexation	Amount of Annexation Charge	Period of Special Assessments		Special Assessments to 6/30/66	Fiscal Year 1966-67		Remaining Balance of Annexation Charges 6/30/67	
			First Year	Last Year		Special Assessments \$/ \$1.00	Tax Rate		
Annexation Charges Completed to June 30, 1965		\$568,130.00			\$568,130.00	\$	0	\$	0
Annexation Charges Outstanding as of June 30, 1965									
Del Mar, City of	11-23-62	131,200.00	1963-64	1972-73	40,559.90	13,463.11	12¢	77,176.99	
De Luz Heights M.W.D.	6-28-67	7,400.00	1968-69	1977-78	0	500.00	Cash	6,900.00	
Fallbrook P.U.D.	11-24-55	8,500.00	1959-60	1968-69	6,140.33	884.60	5¢	1,475.07	
Helix I.D.	9-17-59	11,600.00	1960-61	1969-70	7,175.92	1,224.72	11¢	3,199.36	
Sunnyslope Heights Annex	7-25-60	13,600.00	1961-62	1970-71	7,459.34	1,384.19	2¢	4,566.27	
Chiverrain M.W.D.	2-11-65	14,000.00	1966-67	1975-76	500.00	1,306.69	7¢	12,193.31	
No. 1 Annex of 1965									
Oray M.W.D.	10-20-60	16,800.00	1961-62	1970-71	8,896.51	1,766.41	6¢	6,137.08	
No. 3 Annex of 1960									
Poway M.W.D.	9-21-59	4,000.00	1960-61	1969-70	2,716.23	451.30	3¢	832.47	
No. 1 Annex of 1959									
Rainbow M.W.D.	5-12-59	3,500.00	1960-61	1969-70	2,231.58	342.69	3¢	925.73	
No. 1 Annex of 1959									
Ramona, M.W.D.	5-29-59	6,600.00	1960-61	1969-70	4,197.83	669.51	9¢	1,732.66	
No. 1 Annex of 1959									
Rio San Diego M.W.D.	11- 6-59	18,300.00	1960-61	1969-70	11,360.02	1,832.74		5,057.24	
No. 2 Annex of 1959									
No. 3 Annex of 1960	10-17-60	57,100.00	1961-62	1970-71	28,903.17	6,017.05	10¢	22,179.78	
San Dieguito I.D.	9-15-59	8,400.00	1960-61	1969-70	5,184.83	916.95	6¢	2,328.19	
No. 1 Annex of 1959									
Valley Center M.W.D.	12-12-60	3,900.00	1961-62	1970-71	2,027.44	406.08	9¢	1,466.48	
No. 1 Annex of 1960									
Yuma M.W.D.	12-10-63	40,750.00	1964-65	1973-74	8,853.50	4,098.01	15¢	27,798.49	
Total		\$833,780.00			\$724,306.80	\$33,514.08		\$173,959.12	

SAN DIEGO COUNTY WATER AUTHORITY

FINANCIAL REPORT

Table F-7

METROPOLITAN WATER DISTRICT ANNEXATION CHARGES, ASSESSMENTS AND BALANCES ON AUTHORITY AREAS.

Member Agencies	Date of Annexation	Period of Special Assessments	
		First Yr.	Last Yr.
Annexation Charges Completed to June 30, 1965	---	---	---
Outstanding as of June 30, 1965			
Chula Vista, City of			
Fallbrook Public Utility District			
Lakeside Irrigation District			
Helix Irrigation District	12-17-46	1947-48	1976-77
National City, City of			
Oceanside, City of			
San Diego, City of			
Bueno Colorado M.W.D.	6-11-54	1955-56	1984-85
Carlshad M.W.D.	6-16-54	1955-56	1984-85
Del Mar, City of	11-23-62	1963-64	1992-93
De Luz M.W.D.	6-28-67	1968-69	1997-98
Escondido, City of	10- 9-50	1951-52	1980-81
Fallbrook Public Utility District			
No. 1 Annexation of 1950	8- 1-50	1951-52	1980-81
No. 2 Annexation of 1958	11-24-58	1959-60	1988-89
Helix Irrigation District			
Crest P. U. D. Annexation	12-13-48	1949-50	1978-79
El Cajon Dry Island Annexation	12-20-54	1955-56	1984-85
Helix-Watson Ranch Annexation	2-20-59	1960-61	1989-90
Helix-Sunny Slope Hts. Annexation	9-17-59	1960-61	1989-90
Olivenhain M.W.D.	7-25-60	1961-62	1990-91
No. 1 Annexation of 1965	2-11-65	1966-67	1995-96
Otay M.W.D.	10-26-56	1957-58	1986-87
No. 3 Annexation of 1960	10-20-60	1961-62	1990-91
Poway M.W.D.	4-21-54	1955-56	1984-85
No. 1 Annexation of 1959	9-21-59	1960-61	1989-90
Rainbow M.W.D.	4-10-54	1955-56	1984-85
No. 1 Annexation of 1959	5-12-59	1960-61	1989-90
Ramona M.W.D.	8-27-57	1958-59	1987-88
No. 1 Annexation of 1959	5-29-59	1960-61	1989-90
No. 2 Annexation of 1961	9-22-61	1962-63	1991-92
No. 3 Annexation of 1963	9-29-63	1964-65	1993-94
Rincon del Diablo M.W.D.	6-14-54	1955-56	1984-85
Rio San Diego M.W.D.			
(not including Lakeside I.D.)	6- 7-56	1957-58	1986-87
No. 2 Annexation of 1959	11- 6-59	1960-61	1989-90
No. 3 Annexation of 1960	10-17-60	1961-62	1990-91
San Dieguito Irrigation District	12-13-48	1949-50	1978-79
No. 1 Annexation of 1959	9-15-59	1960-61	1989-90
Santa Fe Irrigation District	12-13-48	1949-50	1978-79
South Bay Irrigation District			
(not including City of Chula Vista)	11- 3-52	1953-54	1982-83
Valley Center M.W.D.	5- 9-55	1956-57	1985-86
No. 1 Annexation of 1960	12-12-60	1961-62	1990-91
Yuma M.W.D.	12-16-63	1964-65	1993-94
Total			

Table F-7

METROPOLITAN WATER DISTRICT ANNEXATION CHARGES, ASSESSMENTS AND BALANCES ON AUTHORITY AREAS

Amount of Annexation Charge	Special Assessments to 6/30/66	Fiscal Year 1966-67		Remaining Balance 6/30/67
		Special Assessments	Tax Rate ¢ / \$100	
\$ 144,659.00	\$ 144,659.00	\$ ---	---	\$ ---
13,045,000.00	8,378,916.13	434,751.85	3	4,231,332.02
1,072,230.00	395,628.68	34,283.79	5	642,317.53
548,100.00	202,915.84	19,216.18	4	325,967.98
611,250.00	61,770.92	20,194.67	18	529,284.41
2,002,000.00	0.00	0.00	---	2,002,000.00
386,000.00	195,073.42	12,629.11	5	178,306.47
34,600.00	21,036.57	956.34	3	12,607.09
50,400.00	11,834.77	1,769.20	10	36,796.63
10,500.00	6,046.37	328.31	3	4,125.32
327,450.00	121,897.28	13,313.20	2	192,239.52
8,730.00	1,763.18	291.43	8	6,675.39
38,250.00	7,653.85	1,326.44	13	29,275.71
83,880.00	14,520.50	2,372.54	3	66,986.96
512,520.00	0.00	17,173.64	92	495,346.36
273,000.00	82,774.99	10,864.12	3	179,360.89
95,100.00	15,956.97	3,230.75	11	75,912.28
91,800.00	32,852.85	3,026.88	2	54,920.27
27,150.00	5,453.00	902.59	6	20,794.41
167,700.00	61,556.00	6,075.64	3	100,068.36
24,300.00	4,895.47	799.59	7	18,604.94
339,000.00	91,108.30	11,292.85	14	236,598.85
42,330.00	8,474.09	1,413.40	19	32,442.51
15,480.00	2,080.46	508.35	23	12,891.19
10,560.00	706.18	373.50	15	9,480.32
757,200.00	280,502.99	25,696.50	6	451,000.45
373,980.00	112,505.76	14,200.54	5	247,273.70
109,110.00	21,954.83	3,507.39	13	83,647.78
289,890.00	48,732.73	9,805.99	16	231,351.28
187,100.00	107,455.33	5,231.90	2	74,412.77
71,820.00	14,427.47	2,468.49	16	54,924.04
167,000.00	96,087.46	5,102.52	2	65,810.02
449,370.00	197,050.04	13,719.21	3	238,600.75
205,680.00	68,812.76	6,795.89	7	130,071.35
23,700.00	3,958.71	812.66	18	18,928.63
749,490.00	50,113.19	24,854.13	91	674,522.68
\$ 23,346,329.00	\$10,872,176.09	\$709,274.65		\$11,764,878.65

