

SAN DIEGO COUNTY
WATER AUTHORITY



TWENTIETH ANNUAL REPORT
1966

SAN DIEGO COUNTY WATER AUTHORITY
Organized June 9, 1944

TWENTIETH
ANNUAL REPORT
OF AUTHORITY OPERATIONS
FOR FISCAL YEAR ENDING JUNE 30, 1966

Linden R. Burzell
General Manager and Chief Engineer

SAN DIEGO, CALIFORNIA
1966

TABLE OF CONTENTS

	Page
MEMBER AGENCIES, DATE OF ENTRY AND REPRESENTATIVES	4
OFFICERS OF BOARD OF DIRECTORS AND EXECUTIVE OFFICERS	5
BOARD OF DIRECTORS	6
COMMITTEES OF THE BOARD	8
AUTHORITY HIGHLIGHTS IN BRIEF	9
LETTER OF TRANSMITTAL	11
REPORT OF ACTIVITIES	13
BOARD OF DIRECTORS	13
Administrative Staff	14
Employee Relations	14
Public Information and Education	14
GROWTH	15
Area	15
Population	17
Assessed Valuation	17
WATER SUPPLY AND CONSUMPTION	18
Water Supply and System	18
Water Deliveries and Rates	19
Water Production of Member Agencies	21
Agricultural Water Use	24
Authority Facilities	24
Water Quality	27
Chlorination	27
Allocation of Water Among Member Agencies	28
Future Supplies	29
Future Pipeline Second San Diego Aqueduct	29
OPERATION AND MAINTENANCE	31
Maintenance Headquarters	31
Patrol	31
CROSS-CONNECTION PROJECT	32
SERVICE CONNECTIONS	32
Valley Center Municipal Water District No. 5 Service Connection	32
City of Escondido No. 2 Service Connection	34
LEGAL DEPARTMENT ACTIVITIES	34
MEMBERSHIP IN THE METROPOLITAN WATER DISTRICT	36
Constituent Member Agencies and Area	39
Assessed Valuation	39
Water Sales	39
Tax Rate	40

FIGURES

A. Authority Area Within San Diego County	12
B. Water Production of Authority Member Agencies	22
C. Rainfall Record at San Diego, California	25
D. Composition of The Metropolitan Water District of Southern California	37
E. Water Systems of Metropolitan Water District and San Diego County Water Authority	38

TABLE OF CONTENTS

(Continued)

INDEX OF TABLES

	Page
APPENDIX A — STATISTICAL TABLES	
1. Area — Authority Member Agencies	42
2. Population Growth — County and Authority Area	43
3. Population — Authority Member Agencies and County	44
4. Assessed Valuation — Authority Member Agencies and County	45
5. Sales of Colorado River Water — Fiscal Year 1965-66	46
6. Water Sales — 1947 to 1966	48
7. Water Production Within Authority Agencies — Fiscal Years 1956-57 to 1965-66	49
8. Water Production of Authority Agencies — Fiscal Year 1965-66	50
9. Unit Water Production — Per Acre and Per Capita 1965-66	51
10. Agricultural Use of Water — Fiscal Year 1965-66	52
11. Authority Storage in San Vicente Reservoir	53
12. Chemical Character of Natural Colorado River Water at West Portal of San Jacinto Tunnel	54
13. Allocation of Right to Purchase Authority Water	55
14. Water Sales by Metropolitan Water District	56
15. Water Production — Metropolitan Water District Constituent Areas	57
16. Analysis of Colorado River Aqueduct Water Taken at West Portal of San Jacinto Tunnel	58
17. Assessed Valuations and Tax Rates of The Metropolitan Water District of Southern California	59
APPENDIX B — FINANCIAL REPORT	
Letter of Transmittal	60
Auditor's Report	63
Exhibit A. Balance Sheet	64
Exhibit B. Statement of Changes in Surplus and Reserves	66
Exhibit C. Statement of Revenue and Expense	68
Notes to Financial Statements	69
Schedule 1. Statement of Operating Expense	72
Schedule 2. Statement of Revenue — Estimated and Actual	73
Schedule 3. Statement of Appropriations and Expenditures	74
Schedule 4. Summary Statement of Cash Receipts and Disbursements	76
Schedule 5. Statement of Investments	77
Schedule 6. Statement of Bonds Payable	78
Schedule 7. Property, Plant and Equipment and Accumulated Depreciation	80
Comments	82
Table F-1. Tax Assessments and Collections	83
Table F-2. Assessed Valuations and Tax Rates	84
Table F-3. Tax Levies and Tax Collections	85
Table F-4. Legal Debt Margin	86
Table F-5. Insurance Coverage	87
Table F-6. Metropolitan Water District Annexation Charges, Assessments and Balances on Authority Areas	88
Table F-7. San Diego County Water Authority Annexation Charges, Assessments and Balances	90

SAN DIEGO COUNTY WATER AUTHORITY

*Member Agencies, Date of Entry, and
Representatives on Board of Directors on June 30, 1966*

CITIES

Del Mar.....	Nov. 23, 1962	
O. B. Sholders		
Escondido.....	Oct. 9, 1950	
Lloyd M. Mitchell		
National City.....	June 9, 1944	
Richard E. Gautereaux		
Oceanside.....	June 9, 1944	
Robert A. Weese		
San Diego.....	June 9, 1944	
Baylor Brooks	Fred A. Heilbron	H. Fred Landgraf
David S. Casey	Gaylord Henry	Fred W. Simpson
John M. Cranston	Mrs. Edith Kamm	Arthur C. Wells
R. E. Graham	George Kerrigan	

IRRIGATION DISTRICTS

Helix.....	June 9, 1944	
Michael Fletcher, Harry Griffen, M. J. Shelton		
San Dieguito.....	Dec. 13, 1948	
Charles W. Hales (Deceased 5/30/66)		
Santa Fe.....	Dec. 13, 1948	
R. E. Badger		
South Bay.....	Nov. 3, 1952	
Lloyd L. Lee, Walter L. Steele		
<i>(Includes City of Chula Vista, an independent member agency, from June 9, 1944, to Nov. 3, 1952)</i>		

MUNICIPAL WATER DISTRICTS

Bueno Colorado.....	June 11, 1954	
Hans H. Doe		
Carlsbad.....	June 16, 1954	
Allan O. Kelly		
Olivenhain.....	July 25, 1960	
Howard G. Golem		
Otay.....	Oct. 26, 1956	
Ralph W. Chapman		
Poway.....	April 21, 1954	
David R. Shepardson		
Rainbow.....	April 10, 1954	
Walter R. Beck		
Ramona.....	August 27, 1957	
John E. Langan		
Rincon del Diablo.....	June 14, 1954	
Charles A. Crytser		
Rio San Diego.....	June 7, 1956	
Charles C. Price		
<i>(Includes Lakeside I. D., an independent member agency from June 9, 1944 to June 7, 1956)</i>		
Valley Center.....	May 9, 1955	
Cartwright Smith		
Yuma.....	Dec. 16, 1963	
E. W. Blou		
PUBLIC UTILITY DISTRICT		
Fullbrook.....	June 9, 1944	
Franz R. Sachse		

**OFFICERS OF
BOARD OF DIRECTORS**



CHAIRMAN
Fred A. Heilbron
San Diego
7-44 to 6-66



VICE CHAIRMAN
R. E. Badger
Santa Fe
Irrigation District
9-57 to 6-66



SECRETARY
Hans H. Doe
Bueno Colorado
Municipal Water District
6-54 to 6-66



TREASURER
Harry Griffen
Helix
Irrigation District
7-56 to 6-66



CONTROLLER
Howard G. Golem
Olivenhain Municipal
Water District
1-62 to 6-66

**EXECUTIVE
OFFICERS**



Linden R. Burzell
General Manager and
Chief Engineer



W. H. Jennings
General Counsel

BOARD OF DIRECTORS

1965-66

For Officers, See Page 5



Walter R. Beck
Rainbow Municipal
Water District
9-62 to 6-66



E. W. Blom
Yuima Municipal
Water District
1-64 to 6-66



Baylor Brooks
San Diego
5-54 to 10-60
4-62 to 6-66



David S. Casey
San Diego
5-66 to 6-66



Ralph W. Chapman
Otay Municipal
Water District
1-64 to 6-66



John M. Cranston
San Diego
10-64 to 6-66



Charles A. Crytser
Rincon del Diablo
Municipal Water District
6-54 to 6-66



Michael Fletcher
Helix
Irrigation District
10-63 to 6-66



Richard E. Gauthreaux
National City
8-65 to 6-66



R. E. Graham
San Diego
7-63 to 6-66



Charles W. Hales
San Dieguito
Irrigation District
6-58 to 5-66



Gaylord L. Henry
San Diego
11-64 to 6-66



Mrs. Edith Kamm
San Diego
8-65 to 6-66



Allan O. Kelly
Carlsbad Municipal
Water District
11-63 to 6-66



Charles G. Kerch
National City
5-57 to 8-65



George Kerrigan
San Diego
9-53 to 6-66

BOARD OF DIRECTORS

1965-66

(Continued)



H. Fred Landgraf
San Diego
10-55 to 6-66



John E. Langan
Ramona Municipal
Water District
4-61 to 6-66



Lloyd L. Lee
South Bay
Irrigation District
4-61 to 6-66



Lloyd M. Mitchell
Escondido
12-56 to 6-66



Charles C. Price
Rio San Diego
Municipal
Water District
7-58 to 6-66



Franz R. Sachse
Fallbrook Public
Utility District
7-49 to 12-50
10-56 to 6-66



M. J. Shelton
Helix
Irrigation District
2-48 to 6-56
10-65 to 6-66



David R. Shepardson
Paway Municipal
Water District
4-54 to 6-66



O. B. Sholders
Del Mar
4-63 to 6-66



Fred W. Simpson
San Diego
7-44 to 6-66



Wm. G. Sloan
Helix
Irrigation District
11-59 to 10-65



Cartwright Smith
Valley Center
Municipal Water District
3-65 to 6-66



Walter L. Steele
South Bay
Irrigation District
9-62 to 6-66



J. Stacey Sullivan
San Diego
7-62 to 5-66



Robert A. Weese
Oceanside
3-53 to 6-66



Arthur C. Wells
San Diego
2-53 to 6-66

COMMITTEES OF THE BOARD

June 30, 1966

Engineering and Operations Committee

Robert A. Weese, *Chairman*
 Baylor Brooks, *Vice Chairman*
 R. E. Badger
 E. W. Blom
 Ralph W. Chapman
 Hans H. Doe
 Howard G. Golem
 B. E. Graham
 Charles W. Hales
 Allan O. Kelly
 Lloyd L. Lee
 M. J. Shelton
 Oliver B. Sholders

Organization and Personnel Committee

Fred W. Simpson, *Chairman*
 David R. Shepardson, *Vice Chairman*
 Ralph W. Chapman
 Michael Fletcher
 Richard E. Gautereaux
 Howard G. Golem
 Charles W. Hales
 John E. Langan
 Charles C. Price
 Cartwright Smith
 Robert A. Weese

Legal and Claims Committee

Franz R. Sachse, *Chairman*
 David R. Shepardson, *Vice Chairman*
 Walter R. Beck
 John M. Cranston
 Gaylord L. Henry
 Mrs. Edith Kamm
 Allan O. Kelly
 George Kerrigan
 H. Fred Landgraf
 Walter L. Steele
 Arthur C. Wells

Public Education and Information Committee

Lloyd M. Mitchell, *Chairman*
 Hans H. Doe
 B. E. Graham
 Harry Griffen
 Fred A. Heilbron
 Lloyd L. Lee

EXECUTIVE OFFICERS AND OPERATING STAFF

General Manager and Chief Engineer.....	Linden R. Buzzell
General Counsel.....	William H. Jennings
Assistant Chief Engineer.....	Allen H. Jones
Chief Accounting Officer.....	Henry Lozano
Treasurer.....	Harry Griffen
Controller.....	Howard G. Golem
Executive Secretary and Deputy Treasurer.....	Mrs. Linda K. De Croot
Superintendent, Maintenance and Operation.....	Joseph E. Lester

Water Problems and Policy Committee

Hans H. Doe, *Chairman*
 R. E. Badger, *Vice Chairman*
 Baylor Brooks
 David S. Casey
 John M. Cranston
 Charles A. Crytser
 B. E. Graham
 Harry Griffen
 Fred A. Heilbron
 Lloyd L. Lee
 Lloyd M. Mitchell
 Franz R. Sachse
 Fred W. Simpson
 Cartwright Smith

Finance and Insurance Committee

Arthur C. Wells, *Chairman*
 Harry Griffen, *Vice Chairman*
 Walter R. Beck
 E. W. Blom
 David S. Casey
 Charles A. Crytser
 Michael Fletcher
 Gaylord L. Henry
 George Kerrigan
 H. Fred Landgraf
 John E. Langan
 Lloyd M. Mitchell
 Charles C. Price
 M. J. Shelton
 Oliver B. Sholders
 Walter L. Steele

Lands and Rights of Way Committee

Lloyd M. Mitchell, *Chairman*
 Lloyd L. Lee, *Vice Chairman*
 Richard E. Gautereaux
 Harry Griffen
 H. Fred Landgraf
 Franz R. Sachse
 David R. Shepardson

Administrative Code Committee

Charles C. Price, *Chairman*
 Harry Griffen
 Mrs. Edith Kamm
 Lloyd L. Lee

AUTHORITY FACTS IN BRIEF

	1965-66	1964-65	Percent Change
GROWTH OF AREA			
Number of Agencies.....	21	21	0
Total Area — Acres.....	719,787	718,900	+ 0.1
Population.....	1,175,000	1,150,000	+ 2.2
Assessed Valuation.....	\$1,879,990,010	\$1,788,388,770	+ 5.1

OPERATIONS

Water Imported by Authority — ac. ft....	218,813	240,679	- 9.1
Water Production of Agencies — ac. ft..	258,719	243,893	+ 6.1
Local Water Used — ac. ft.....	34,732	25,281	+ 37.4
Authority Water Used — ac. ft.....	223,987	218,612	+ 2.5
Miles of Pipe Line.....	167	168	- 0.6
Miles of Patrol Roads Maintained.....	92	92	0
Number of Service Connections.....	52	51	+ 2.0

FINANCIAL

Revenues:

Water Revenue.....	\$ 5,408,956	\$5,488,411	- 1.4
Other Revenue.....	830,641	902,140	- 7.9
Taxes.....	2,077,297	1,996,308	+ 4.1

Expenditures:

Operation and Maintenance.....	\$ 246,140	\$ 224,653	+ 9.6
Purchase of Water.....	5,144,427	5,408,171	- 4.9
Payments on Outstanding Debt.....	1,299,030	1,279,030	+ 1.6

Total Investment in Plant:

Total Fixed Assets.....	\$104,842,964	\$104,052,917	+ 0.8
Long-term Debt.....	61,709,261	63,799,211	- 3.3



November 30, 1966

Board of Directors
San Diego County Water Authority

Gentlemen:

Here is the Twentieth Annual Report of the Authority, covering activities during the fiscal year ending June 30, 1966.

Most significant was the successful election campaign in which voters approved a \$30,000,000 bond issue to construct a second pipeline for the Second San Diego Aqueduct. The very favorable margin of yes-votes cast in a 4.5 to 1 ratio demonstrated continued public agreement with Authority water policies.

In the same election, all voters within The Metropolitan Water District of Southern California approved an \$850,000,000 bond issue to expand Metropolitan's system to provide for delivery of State Project Water. The Authority is now assured that facilities linking the San Diego Aqueduct with the State Water Project's terminal reservoir at Perris will be built in time to receive water as soon as it becomes available in 1972.

The two San Diego Aqueducts now in operation are in excellent condition and have sufficient unused capacity to provide for all projected Colorado River water demands until 1970 or later. During the year 1970, the Second Pipeline of the Second Aqueduct will be completed as far as San Marcos, thereby providing sufficient capacity to meet the demands of all member agencies until northern water becomes available. Upon completion of the new facility, forecasts indicate that the demand of the Authority's member agencies can be met until the year 1990 or beyond.

Very truly yours,

Linden R. Burzell

LINDEN R. BURZELL
General Manager and
Chief Engineer

Photo opposite: Typical urban area served by San Diego County Water Authority, dotted line indicating Second San Diego Aqueduct in Helix Irrigation District.

Administrative Staff

Mr. Buckley L. Ogden was employed in February, 1966 to fill the position of Project Design Engineer, vacated by the death of Mr. Robert Wilken in December, 1965. Mr. Ogden is a registered professional engineer with previous Authority experience on the Cross-Connection Project.

In March of 1966, Mr. Robert E. Melbourne was employed as Assistant Project Construction Engineer, to work at the Escondido Project Office as assistant to Mr. Lee D. Purdin.

In May, 1966, Mrs. Evelyne M de Beer, Intermediate Account Clerk, succeeded Mrs. Beverly E. May, Junior Account Clerk who resigned. As of June 30, 1966, Authority staff consisted of thirty-one persons.

Employee Relations

The Authority contracts with California Physicians Service for employee medical and hospital benefits. Coverage may be extended by an employee to members of his family at employee expense. The Authority also maintains a retirement contract with the State of California, under which employees are members of the State Retirement System, with the employees contributing the major cost of this benefit by monthly deductions from their salaries. The State Retirement System is combined with the Federal Social Security System, so that contributions include payments to the Federal Government as well. Retirement under the State Retirement System is mandatory at the age of seventy.

After one year of continuous employment, each employee receives a 12-working day vacation per year. After five years, each employee is entitled to a 15-working day vacation annually. Sick leave benefits accumulate at the rate of one day for each month of employment after six months of continuous employment.

Public Information and Education

The staff of the Authority continued its program of public information through presentations before service clubs, schools, and public bodies. These presentations generally traced the history and mission of the San Diego County Water Authority, the water supply from the Colorado River and future supply from Northern California.

The three Water Authority Board members on the Metropolitan Water District Board each sponsored a week-end trip over the Water Authority system and that of the Metropolitan Water District with an overnight stay at Gene Camp on the Colorado River. Approximately ninety business and civic leaders took part in these trips.

The Water Authority supports and participates in the public relations program of the Six Agency Committee. Director Fred W. Simpson is the Authority's representative on the Six Agency Committee, as well as a member of the Colorado River Board. The Six Agency Committee supports the Colorado River Association, the public relations medium for Colorado River matters, including plans for a regional project to supplement the water supply of the Colorado River. The Colorado River Board is the official state agency, set up by the State Legislature to protect the rights of California in the Colorado River.

GROWTH**Area**

The area of the Authority increased during the fiscal year. Annexations to member agencies and the resulting change in boundaries increased the total acreage within the Authority by 887 acres. As of June 30, 1966, 719,787 acres or 1124.7 square miles were included within the Authority.

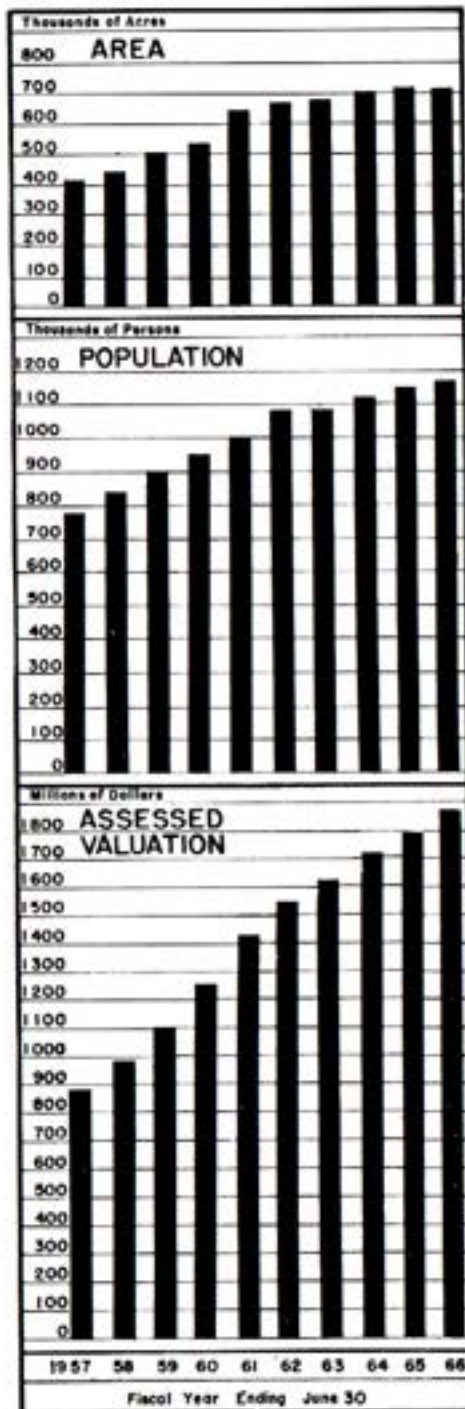
No new districts were annexed during the fiscal year. The entire increase in area resulted from annexations to existing member agencies. Largest annexations were in the cities of Oceanside and Escondido. Oceanside added 997 acres (978 already in the Authority area as part of Rainbow Municipal Water District) and Escondido 1143 acres (395 already in the Authority as a part of the Rincon del Diablo Municipal Water District). The balance of the annexations occurred in smaller tracts.

The boundaries of the Authority now encompass 26 per cent of the area within San Diego County and 79 per cent of all that area lying between the Cleveland National Forest and the Pacific Ocean as shown on Figure A.

Overlapping areas continue to exist in the Authority although efforts are being made to encourage member agencies to eliminate overlapping boundaries through appropriate action.

An overlapping area is land lying within the boundaries of two member agencies. The overlapping portion was originally in one agency and subsequently was annexed by the other which was better able to serve the area with water. The major overlapping areas are primarily due to the expansion of cities into areas already lying within the boundaries of the Authority.

At the present time 17,150 acres lie within cities which overlap into adjacent districts. The Authority Act contains provisions whereby an overlapping area may be excluded from one agency, or an area may be excluded from one agency and annexed to another by mutual consent,



without the area being excluded from the Authority or the Metropolitan Water District, provided permission to do so is first obtained from the Authority.

The area within each member agency, the changes which have occurred therein during the past year, and the percentage of each agency's area to that of the entire Authority are shown in Table 1. As shown in this table, the City of San Diego continues to have the largest area, equal to 26.93 per cent of the total area within the boundaries of the Authority.

The following annexations to existing member agencies have been informally approved by the Authority Board of Directors: Rainbow No. 3 Concurrent Annexation, consisting of a revised area of 8,630 acres contiguous to and lying easterly of the present district boundaries, directly south of the Riverside County line; De Luz Heights Municipal Water District, an incorporated district consisting of 10,280 acres, lying northwesterly of the Fallbrook Public Utility District; Valley Center Municipal Water District No. 2 Concurrent Annexation, consisting of two parcels with 2,600 acres contiguous to and lying easterly of Valley Center Municipal Water District; Olivenhain No. 4 Concurrent Annexation, consisting of 360 acres contiguous to and lying south of the District; Yuima No. 1 Concurrent Annexation, consisting of four parcels contiguous to the District and having an area of 351 acres.

The Authority's 1965 Statement of Change of Boundaries, under state law required to be filed by the Executive Secretary of the Board of Directors prior to January 1, 1966, was filed with the State Board of Equalization, December 30, 1965, the County of San Diego, December 30, 1965, and The Metropolitan Water District of Southern California, December 30, 1965. As shown on the Statement, there were 36 changes made during the year, of which only 6 changed the boundaries of the Authority either by annexation or by exclusion. This Statement is the basis for determination of the assessed valuation by the Assessor of San Diego County who levies the Authority tax rate as established in August by the Authority Board of Directors.

Population

The population within the Authority area continued to expand at a steady but slightly lower rate than the average rate of growth during the last five years. The population census figures for each decade beginning in 1910 together with the estimated population for the years 1961 through 1966 are shown in Table 2. Data pertaining to individual member agencies are shown in Table 3.

The City of San Diego continues to be the most populous member agency and now contains 670,000 persons or 57 per cent of the total residing within the Authority. The Olivenhain District has the smallest population, but it also has the greatest percent of increase since 1960, averaging 29 per cent per year. The City of La Mesa continues to be the most densely populated area within the Authority with 7.41 persons per acre. The cities of National City and El Cajon have densities of 6.85 and 6.23, respectively. The average population per acre of the Authority has increased 4 per cent during the past six years to 1.63 persons per acre or 1,045 persons per square mile.

Assessed Valuation

The Authority maintains a record of boundary changes. A Statement of Change of Boundaries is filed annually with the Assessor of San Diego County. The Assessor determines the assessed valuation of all taxable property lying within the Authority boundaries. This assessed valuation becomes the basis for the Authority's tax levy. The Auditor of the County certified to the Authority that the assessed valuation of taxable property for the 1965-66 tax levy was \$1,879,990,010,

an increase of \$91,601,240 or 5.1 per cent over 1964-65. The assessed valuation of taxable property of each member agency of the Authority is shown in Table 4. Prior to the compilation of this report, the assessed valuation for 1966-67 was received and has been included in Table 4 for convenience. This table shows that the assessed valuation of taxable property within the boundaries of the Authority increased by \$47,264,730 or 2.5 per cent. The average assessed valuation for the Authority increased from \$2,615 per acre in 1965-66 to \$2,678 per acre in 1966-67.

WATER SUPPLY AND CONSUMPTION

Water Supply and System

The San Diego County Water Authority continued to receive its entire supply of water from the Colorado River through the facilities of The Metropolitan Water District of Southern California. At the present time, the Authority has a preferential right to the District's water supply of about 8 per cent. This preferential right results from payments in the form of taxes and annexation charges paid to Metropolitan Water District. Payments for water to the District are not included in the calculation of preferential right. The Metropolitan Water District distributed water throughout the year on the basis of requirements and did not invoke preferential right as the basis for water deliveries.

Metropolitan Water District diverts Colorado River water into the San Diego Aqueduct near San Jacinto. The Water Authority accepts the delivery at a point approximately six miles inside San Diego County. The First Aqueduct has a reservoir at the northerly end where approximately 1,400 acre feet can be stored. There is no storage on the Second San Diego Aqueduct; however, Auld Valley Reservoir site, located in Southern Riverside County has been acquired by the Metropolitan Water District. When completed, it is anticipated that up to 36,000 acre feet of water will be stored in this Southern Riverside County reservoir located at the southerly end of the canal section which has a capacity of 1,000 cubic feet per second.

During July and August of 1965, the Authority's two aqueducts were operated at close to capacity. Capacity of the First Aqueduct is 196 c.f.s. and the Second San Diego Aqueduct has a nominal capacity

of 250 c.f.s. The three months of highest flow in the two aqueducts were July, August and October 1965, with average flows of 403, 413, and 351 c.f.s. respectively. As aqueduct flow nears capacity during the peak summer period, it will be necessary for Authority's member agencies to rely on storage to a greater and greater extent until the second barrel to the Second San Diego Aqueduct is completed.

The total flow in the Authority's system was 218,813 acre feet as compared with 240,679 acre feet during the previous year. The annual flow amounted to 68 percent of the maximum of 320,000 acre feet which could be delivered assuming continuous operation of both aqueducts at capacity for the entire year.

The lowest rate of flow occurred in December, 1965 as a consequence of heavy rainfall in November and December. Aqueduct flow was 8,313 acre feet in December, 1965. Maximum monthly flow occurred in August of 1965 with delivery of 25,390 acre feet.

Water Deliveries and Rates

Water deliveries to all member agencies are shown in Table 5. The agencies purchased 212,889 acre feet during the year; an additional 7,814 acre feet was placed in Authority storage, and 25,326 acre feet was placed by Metropolitan in storage. A total of 9,728 acre feet was removed from storage. Based on the year's experience, aqueduct carrying capacity remains ample to meet member agencies' expanding requirements for several years.

The quantities of water delivered to individual member agencies for the eight-year period from 1958 to 1966 are shown in Table 6, together with the total quantity of water purchased by each agency since the Authority first began delivery of water in 1947. This year's sales were less than 1964-65 by 7.8 per cent.

The Authority continues to deliver water to two governmental projects for Metropolitan Water District. These are the State Forestry Camp located east of Rainbow within the proposed Rainbow Concurrent Annexation No. 3 and the Convair Missile Testing Facility in Sycamore Canyon on the Camp Elliott Reservation. The total quantity of water delivered under these contracts was 73-acre feet, compared with 54-acre feet in the previous year.

The Water Authority charge for water is the rate charged by Metropolitan Water District plus a surcharge of \$1.25 per acre foot. Prior to September 1, 1964, the surcharge was \$2.00 per acre foot. In August, 1964, the Board of Directors of the Authority adopted a resolution which reduced the rate to \$1.25 which is sufficient presently to pay all Authority costs except capital cost.

The Metropolitan Water District has continued its policy of announcing its water rates for approximately three years in advance. During recent years, Metropolitan has increased its water rates each year, and further annual increases are scheduled. A summary of County Water Authority water rates for untreated Colorado River water supplied to authority members since July 1, 1958 follows:

SUMMARY OF WATER RATES
(Dollars Per Acre Foot)

FROM	TO	MWD	AUTHORITY	TOTAL	AGRICULTURAL REBATE	RESULTING AGRICULTURAL RATE
7/1/58	1/1/61	15.00	2.00	17.00	3.00	14.00
1/1/61	1/1/62	17.00	2.00	19.00	4.25	14.75
1/1/62	1/1/63	19.00	2.00	21.00	5.50	15.50
1/1/63	1/1/64	21.00	2.00	23.00	6.75	16.25
1/1/64	7/1/64	24.00	2.00	26.00	9.00	17.00
7/1/64	9/1/64	25.00	2.00	27.00	9.75	17.25
9/1/64	7/1/65	25.00	1.25	26.25	9.75	16.50
7/1/65	7/1/66	28.00	1.25	29.25	12.00	17.25
7/1/66	7/1/67	31.00	1.25*	32.25	14.00	18.25
7/1/67	7/1/68	34.00	1.25*	35.25	16.00	19.25
7/1/68	7/1/69	37.00	1.25*	38.25	18.00	20.25
7/1/69		40.00	1.25*	41.25	20.00	21.25

*Subject to change.

In order to obtain the agricultural rebate, it is necessary for the Authority to certify to the Metropolitan Water District as to the quantities of water used for agricultural purposes. Rebates granted to the Authority by the District are paid in full to the agencies which had previously certified that such water was used for agricultural purposes.

Water Production of Member Agencies

"Water production" describes that quantity of water which an agency must produce from all its sources to meet the demands of its consumers, plus the losses which occur between the sources of supply and the consumers, including leakage, losses from breaks, evaporation from distribution reservoirs, and waste resulting from normal operations. Sources of supply may include impounding reservoirs, wells, and the Authority system.

The total water production of the twenty-one member agencies is shown in Table 7. Nineteen member agencies indicated an increase in water production over the previous year. The total increase from 243,893 acre feet to 258,720 acre feet was spread quite uniformly over the entire area of the Authority. Maximum monthly production occurred in August, 1965 when 31,776 acre feet of water was required to meet the combined demand of the member agencies' consumers, an increase of 3 per cent over the previous year's maximum monthly production. Minimum monthly production occurred in December, 1965 when 10,221 acre feet of water was produced, 1,759 acre feet less water than was used in the minimum month of previous year. Several Authority agencies have extensive local water supplies available. In recent years, the production of local water has dropped off due to decreased local runoff into reservoirs and reduced pumping of ground water. The heavy rainfall of November and December, 1965 provided some runoff so that production of local water increased to 34,732 acre feet or 13.4% of the total.

The wells in Pauma Valley produced 6,445 acre feet of water for the several agencies within the Yuima District. The San Luis Rey River system and the Warner Ranch wells owned by the Vista Irrigation District, a sub-agency of Bueno Colorado Municipal Water District, produced 8,379 acre feet for distribution within Bueno Colorado Municipal Water District, Rincon Municipal Water District, and the City of Escondido. California American Water Company produced approximately 5,556 acre feet of local water within its service area which includes National City and South Bay Irrigation District. The most extensive reservoir system within San Diego County Water Authority is owned by the City of San Diego. The City system produced 10,205 acre feet of local water during the year, 5,326 acre feet of which was delivered for use in areas outside of the Authority. Detailed statistics on water production are in Table 8.

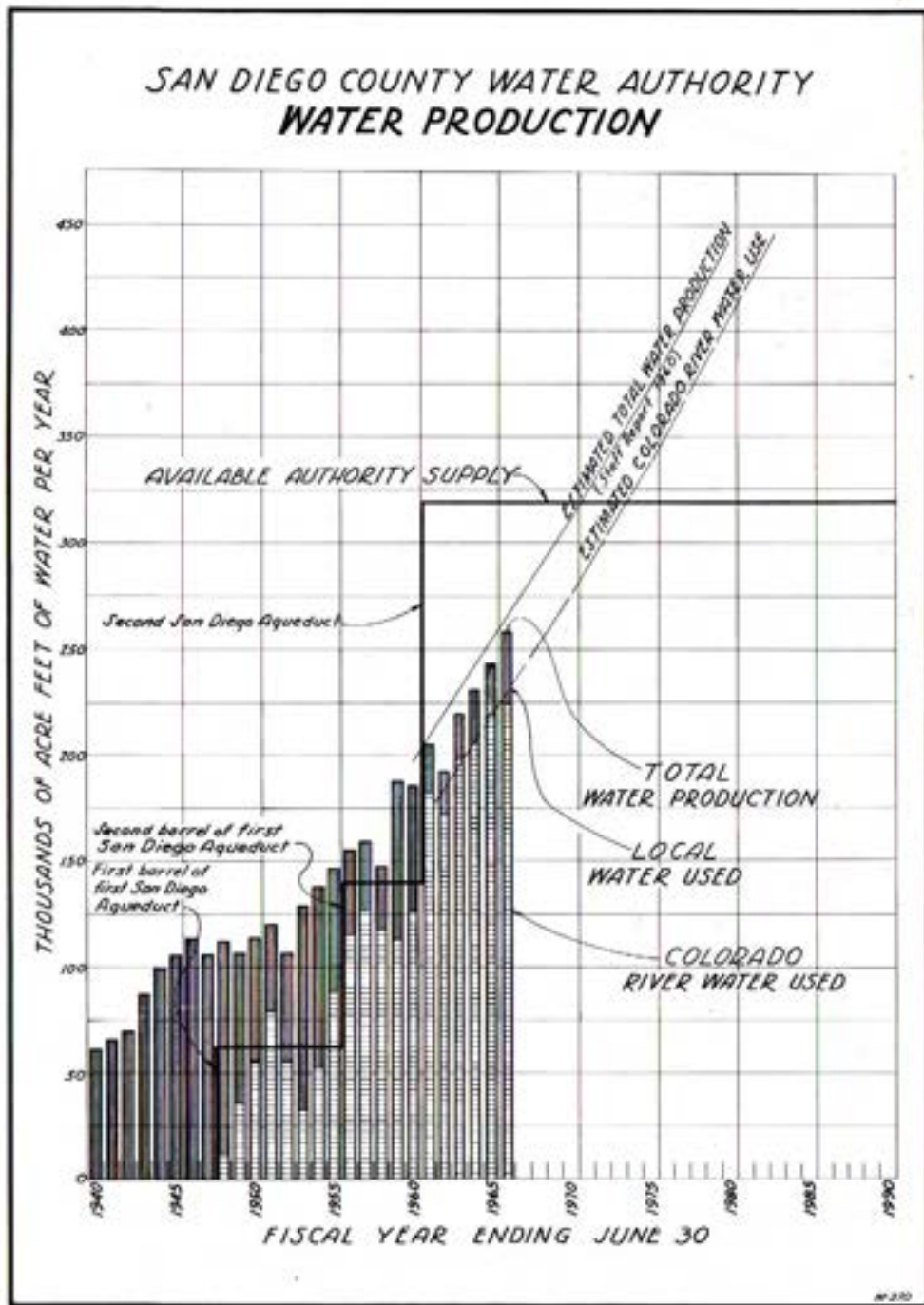


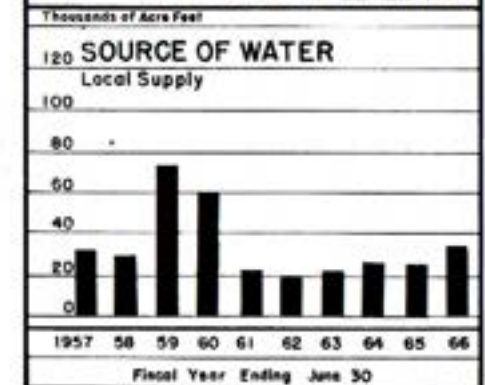
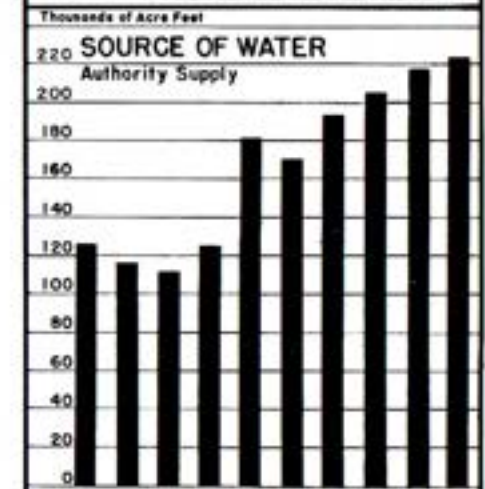
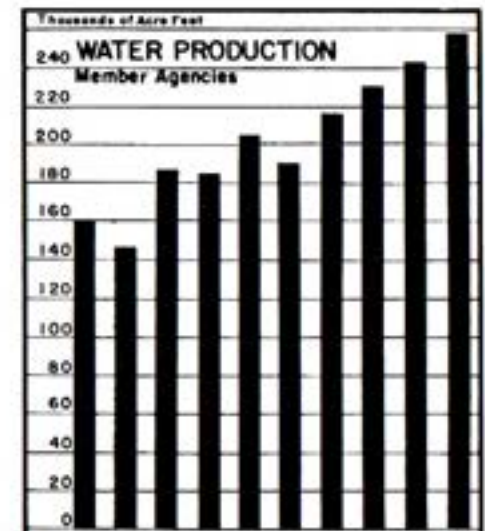
Figure B. Water Production of Authority Member Agencies

A comparison of water production by the member agencies can be found in Table 9. This table lists water production based on area and population in acre feet per acre per year, and acre feet per capita per year. The water systems of member agencies are serving an estimated 282,300 acres out of the 719,787 acres or 39 per cent of the total area of the County Water Authority.

Volume of water used per year per unit area varies a great deal depending on the state of development, type of soil, type of crop, and on other variables. The Yuima Municipal Water District is an intensively irrigated agricultural district and reports water requirement of 2.14 acre feet per acre. Rainbow Municipal Water District reports 1.77 acre feet per acre while the relatively undeveloped areas of Olivenhain Municipal Water District and Ramona Municipal Water District report 0.11 and 0.16 of an acre foot per acre, respectively. The Authority average is 0.9 of an acre foot per acre on the 282,300 acres served.

Per capita water use within the Authority increased to .22 of an acre foot per year. Yuima Municipal Water District reports 8.57 acre feet per capita based on a population of 950 persons which reflects the high agricultural demand.

Figure B shows the combined water production of the Authority member agencies and compares production with available local supply.



Columns representing annual production are shaded to show contrast between water obtained from local sources and that which has been supplied by the Water Authority from the Colorado River. The chart shows the expanding use of Authority water and the decreasing local supply. Projections of future production of water are based on the assumption that additional water will be available when needed. The staff of the Authority has predicted that additional aqueduct facilities will be required to serve the Authority by the year 1970. A report on file at the Authority office dated February, 1965 entitled "Timing of Construction and Sizing of the Second Barrel of the Second San Diego Aqueduct" provides detailed statistics from which these projections have been made.

Agricultural Water Use

Agricultural water use amounted to 33.2 per cent of the total of 253,394 acre feet produced by Authority agencies. The Metropolitan Water District allows a rebate for water used for agriculture. A rebate of \$12.00 per acre foot during the fiscal year justified extensive record keeping and reporting by member agencies. In order to obtain the rebate, each agency must certify to the Authority with substantiating data as to the total quantity of water used for agricultural purposes. Table 10 shows quantities of water used in agriculture. This year's report shows that Rainbow Municipal Water District had the highest percentage of agricultural water use at 97.7 per cent.

Authority Facilities

The Authority system consists of the following facilities: The two San Diego Aqueducts south of Metropolitan's delivery point which is approximately six miles south of the Riverside County line; a portion of the Fallbrook-Oceanside Branch, extending southwesterly from the First San Diego Aqueduct at Rainbow; and the La Mesa-Sweetwater Branch Line, extending from the First Aqueduct at Slaughterhouse Canyon through Lakeside to a terminal point at Sweetwater Reservoir; plus a cross over aqueduct between the Second Aqueduct in Twin Oaks Valley to a point on the First Aqueduct just north of the City of Escondido. Treatment facilities are provided in a chlorination station in Rainbow Pass just north of the North San Diego County line where flows in both aqueducts are chlorinated.

The Authority has no storage facilities of its own. It does, however, have a contractual right to store up to 30,000 acre feet of water in San

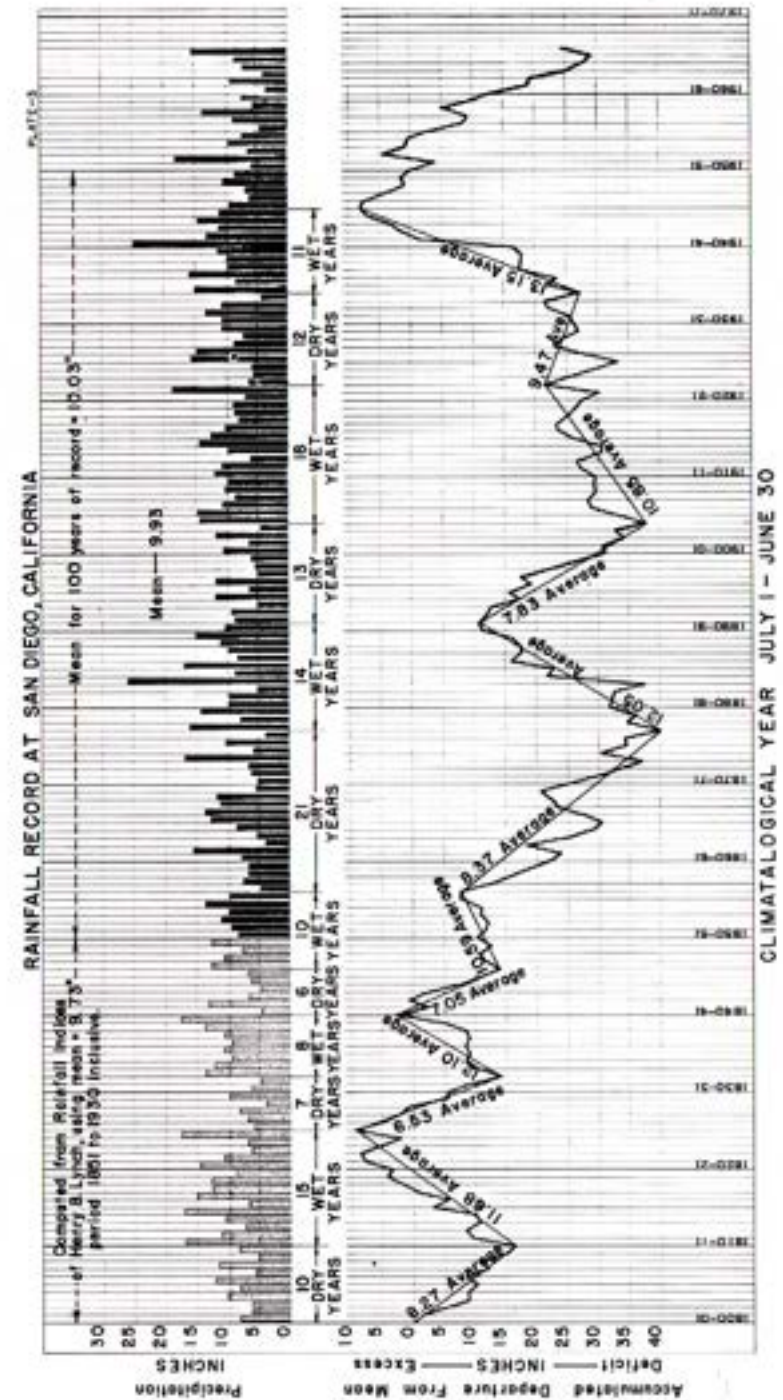


Figure C. Rainfall Record at San Diego, California

Vicente Reservoir. The privilege results from an agreement with the City of San Diego which expires October 31, 1969. Under this agreement, the City charges \$2.20 per acre foot for the maximum amount of water in storage each year, plus fifty cents per acrefoot to cover pumping charges for any water transferred from storage to the City. Under the agreement the first water of any water which might be lost over the spillway would be that stored by the Authority. During the low-demand months, a total of 7,745 acre feet of water was placed in San Vicente Reservoir by the Authority for the accounts of its member agencies. A total of 9,645 acre feet was withdrawn, and 1,248 acre feet was lost by evaporation. The net result of the year's activities was a decrease of 3,148 acre feet to 23,143 acre feet in storage on June 30, 1966. Storage statistics are shown in Table 11. The Valley Center District had the largest amount credited to its account, totaling 7,500 acre feet or about 32 per cent of all Authority water stored in San Vicente Reservoir. In October, 1964, the agreement for storage in San Vicente Reservoir was renewed on the same terms and conditions for an additional five years.

The Authority also has an agreement with the City of San Diego which permits it to store up to 2,500 acre feet of water in the City's Lower Otay Reservoir, which is the terminus of the Second San Diego Aqueduct. This storage is for operational purposes only, and the water is transferred to the City of San Diego when water is requested by the City at this location. Storage capacity for member agencies is not provided at Lower Otay Reservoir. The City of San Diego makes a charge of \$1.00 per acre foot for the maximum amount of storage in any 12-month period or part thereof with a minimum annual charge of \$1,000 for use of the reservoir. In addition, there are pumping charges which vary from \$2.25 to \$1.50, depending on the elevation of the water in the reservoir.

The City of San Diego prefers to take direct deliveries of water at Otay from the aqueduct at a rate of flow determined by their treatment plant requirements. The City prefers not to have water delivered into the lake. For this reason, very close control is exercised by the Authority personnel in order to prevent spillage from the aqueduct into the Reservoir.

The Authority completed installation of an automatic telemetering and supervisory control system in June. This system shows operators at

Escondido the rate of incoming flow from Metropolitan No. 3 Meter, provides remote control and rate of flow indication in the Cross-Connection, plus indication of pressure in the final siphon on the Second Aqueduct. Remote control and rate of flow indication at San Diego No. 4, and Otay No. 3 are also provided.

A two-way radio was installed at Metropolitan's San Jacinto operation center, providing improved emergency control of the overall supply network and adding flexibility to operational control for more efficient operation of the aqueducts.

During November and December demand for Colorado River water decreased during a period of heavy rainfall. The Colorado River Aqueduct nearly filled Lake Mathews during this period, and Metropolitan sought to arrange for additional storage capacity. Accordingly, on December 15, 1965, Metropolitan, the Authority, and the City of San Diego entered into a three-way agreement permitting Metropolitan storage in San Vicente Reservoir. Subsequently a maximum of 25,085 acre feet has been stored, and this helped equalize monthly aqueduct flow.

Water Quality

Chemical constituents of dissolved solids in the aqueduct water are shown in Tables 12 and 16. The breakdown is based on analyses of water delivered to the aqueducts at San Jacinto as made by the laboratory of the Metropolitan Water District at the La Verne treatment plant. Variation in total hardness ranged from a high of 375 p.p.m. to a low of 334 p.p.m. Hardness is reported as p.p.m. equivalent of calcium carbonate. Water temperatures varied from a low of 51° F. recorded in March, 1966 to a high of 82° F. reported in July, 1965.

Chlorination

Throughout the year, Authority water continued to meet or exceed the minimum bacteriological quality standards as set forth in the United States Public Health Service Drinking Water Standards of 1962. Most agencies within the Authority complete their treatment of water by simple chlorination.

Over a period of years, the Authority has controlled bacterial growth on aqueduct pipe walls by "slugging" with chlorine. A continuous chlorin-

tion program was undertaken during 1965. The current policy is to apply chlorine on a continuous basis except for limited periods occasioned by mechanical shutdowns. The continuous chlorination program has proved successful and has resulted in fewer service problems. The rate of application of chlorine by the Authority ranged from 0.75 p.p.m. to 2.5 p.p.m., depending upon chlorine demand, temperature of the water, and other variables. During the year, a new evaporator was installed, together with a leak detector and automatic shutoff valve system. The chlorination station is located in Rainbow Pass, serving all three pipelines of the First and Second Aqueducts.

Several member agencies have large agricultural developments which are based on the use of irrigation water obtained from the Authority. The State Health Department has continued to recognize that Colorado River water supplied by the Authority meets drinking water standards after sterilization with chlorine. Current practice is to require dual chlorination with a time interval of at least one-half hour between the two points of application.

Allocation of Water Among Member Agencies

The Authority Act (Sec. 5.11) provides the method by which the water supply of the Authority must be divided among its member agencies if the total demands for water should exceed the capacity of the Authority's aqueducts.

The quantity of water to which an agency has preferential right is that portion of the available Authority water supply which bears the same relation to the whole as the total of all payments paid to the Authority by the agency, exclusive of payments for water, bears to the total of such payments received from all agencies.

Allocation by preferential right will be invoked only when the combined demand for water exceeds the capacity of the Authority to deliver and agreement cannot otherwise be reached. When water and capacity are available, agencies may purchase water without limit.

Before construction of the Second San Diego Aqueduct, demand exceeded system capacity on several occasions; however, voluntary agreement between member agencies and the Authority permitted operation without resort to the provisions of Section 5.11 of the Authority Act.

The percentage allocations in effect as of June 30, 1966, and the corresponding flows available from the present aqueduct system are shown in Table 13.

Future Supplies

The Water Authority obtains all its water from The Metropolitan Water District of Southern California. At the present time all of the water comes from the Colorado River by way of the Colorado River Aqueduct. The Metropolitan Water District Board has adopted a statement of policy, frequently repeated over many years, that when additional water or distribution facilities are needed to meet demands of its member agencies, additional water and facilities will be made available.

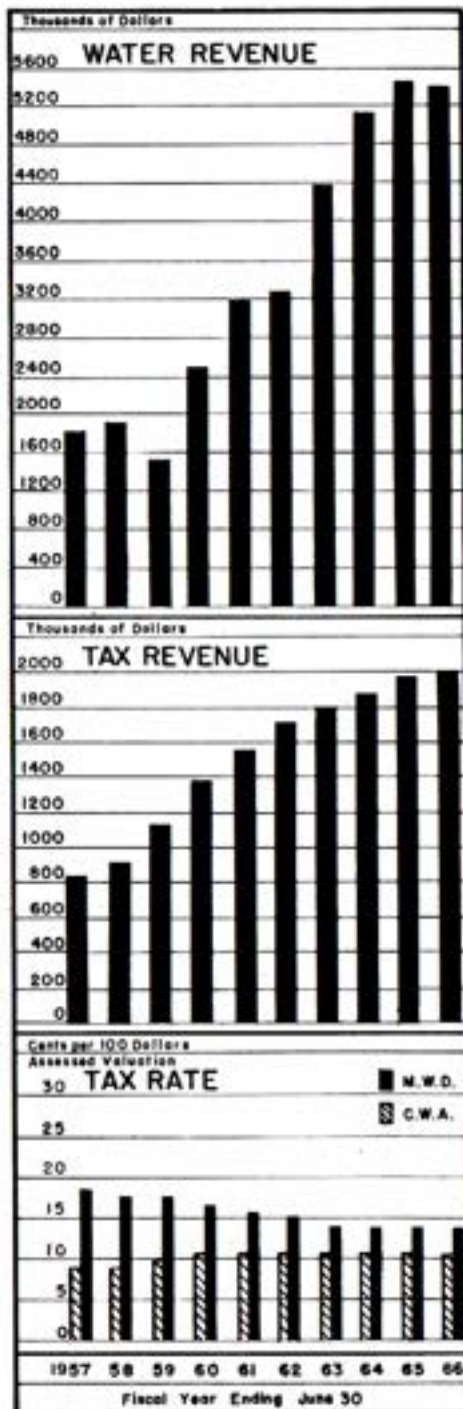
The first major step to obtain additional water was undertaken on November 4, 1960, when the District entered into a contract with the State of California for 1,500,000 acre feet of water from the State aqueduct system (Feather River Project). State Project water has been scheduled for delivery to Southern California by the year 1971, and current reports state that all the construction is on schedule or ahead of schedule.

Second Pipeline Second San Diego Aqueduct

On June 7, 1966, voters throughout the Metropolitan Water District approved Proposition W for \$850,000,000, and San Diego County voters additionally approved Proposition V for \$30,000,000. The Metropolitan bond issue provides funds for expansion of its system to provide for delivery of State Project water. Among the facilities to be constructed is an Inland Feeder System which will connect Perris Reservoir with the San Diego Aqueducts.

The first increment is a second pipeline of the Second San Diego Aqueduct of approximately 100,000 feet of 380 c.f.s. capacity pipeline to run from the end of the San Diego Canal near Auld Valley to the Water Authority delivery point approximately six miles south of the San Diego County line.

Metropolitan has authorized the Authority to proceed with the engineering on two features of the Inland Feeder: the Perris to Casa Loma Aqueduct and the Second Pipeline of the Second San Diego Aqueduct. During the year, the Authority's engineering department in San Diego and Project Construction office in Escondido devoted approximately ninety per cent of its total effort to this work. At year's end, the center line of the second pipeline was established and considerable progress had been made on completion of right-of-way maps. Design is scheduled for completion in July, 1967.



As a result of the U.S. Supreme Court's decision in the Case of "Arizona vs. California", less water may be available to the District annually than the 1,212,000 acre feet that the Colorado River Aqueduct is capable of bringing into Southern California. For this reason, the Metropolitan Water District's contract with the State of California has been amended to increase Metropolitan Water District's quantity of State Project water from 1,500,000 to 2,000,000 acre feet per year.

Responsible forecasts indicate that the remaining Colorado River entitlement, together with State Project water, will meet the growing requirements of the Metropolitan Water District's member agencies until the year 1990. During this period of time, the population of the District is expected to increase from the present 10 million to about 20 million.

For the period beyond 1990, when additional supplies are required, many plans have been proposed which call for development of projects on the undeveloped rivers in Northern California, the Columbia River, and perhaps in Canada. These many proposals, together with sea water desalting, are being investigated by the Water Authority, the Metropolitan Water District, the State of California, and the Federal Government.

Figure B shows the increase in water requirements within the Authority since 1940. Studies indicate that additional aqueduct capacity may be required by the year 1970, by which time it will be necessary to have completed the Second Barrel of the Second San Diego Aqueduct.

Metropolitan Water District has indicated in Report 818 that additional Metropolitan Water District facilities named "The Inland Feeder System" will be required to make State Project water available to the Authority from Perris Reservoir. Accordingly, engineering work has been undertaken to determine the alignment of the new works, right of way requirements, and the development of plans and specifications for the necessary facilities.

In June, 1965, the Water Authority entered into an agreement with the Metropolitan Water District to provide engineering services for two features of the Inland Feeder System which will bring water to San Diego County. During the year the centerline of the new pipeline was established, and a considerable proportion of mapping and surveying completed. It is anticipated that the first sections will go to bid during the summer of 1967. The first section is scheduled for completion early in 1969.

OPERATION AND MAINTENANCE

Maintenance Headquarters

The Authority operates its aqueducts from a maintenance center at 660 West Fifth Avenue in Escondido. From that location Superintendent Joseph E. Lester, directs all operational activities and all maintenance functions from this location with a crew of eleven employees. Operation of the aqueducts which serve all member agencies, some with very small reservoir capacity, requires that system operators be on call twenty-four hours every day. The Superintendent resides in a company-owned house at the Escondido operation center. Telephone, two-way radio, and telemetering equipment provide up-to-date communication.

Patrol

The Authority aqueducts and related facilities require continuous routine patrol to cope with vandalism, watch for leaks, and inspect struc-

SAN DIEGO COUNTY WATER AUTHORITY

tures, gates, culverts, and access roads. During the past year, Authority employees traveled 112,000 miles while operating and maintaining the system.

In addition to patrol vehicles, the field forces are provided with a variety of equipment, including road graders, bulldozers, compressors, welders, and a well-equipped shop. Skilled Authority personnel perform many varied tasks, including carpentry, painting, electrical, road building, construction, and mechanical repair work.

Operating personnel and maintenance crews are dispatched by two-way radio. Base stations are maintained in San Diego, Escondido, and Hemet with a repeater station located on Palomar Mountain. The Authority maintains 10 mobile units in operation, maintenance, and construction.

Cross-Connection Project

During July the new cross-over aqueduct, capable of transferring up to 130 c.f.s. from the Second Aqueduct to the First Aqueduct, was placed in full operation.

This important addition to the Authority's system adds necessary flexibility to the system, increases reliability of service, and expands potential capacity of the First San Diego Aqueduct by an additional 130 c.f.s. with completion of the Second Barrel of the Second San Diego Aqueduct. Flow adjustments through the Cross-Connection can be made from the Escondido headquarters by remote telemetering and supervisory control equipment.

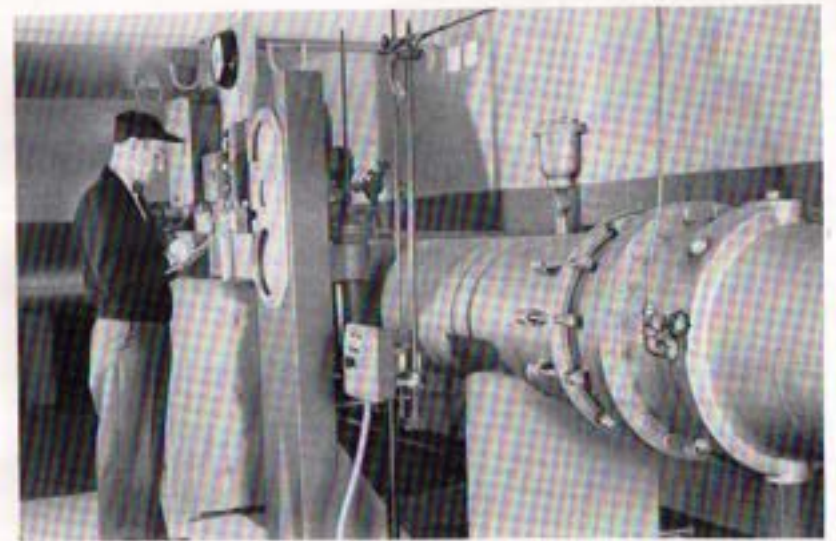
SERVICE CONNECTIONS

As of July 1, 1966, there were 52 service connections on the Authority's system, ranging in capacity from 2 to 180 c.f.s. Flows are regulated by control valves operated by Authority personnel as requested by the agencies.

Valley Center Municipal Water District No. 5 Service Connection

This service connection located on the First San Diego Aqueduct between Red Mountain and Oat Hills Tunnels was completed in December, 1965.

A 20-inch nozzle was inserted in the Second Pipeline of the First Aqueduct with a 20-inch plug valve and a manifold pipe which was stub ended for a future cross-connection to the First Pipeline. The service connection consists of a 20" x 11.4" Venturitube activating a Builder's Type



M totalizer-indicator-recorder meter instrument having a capacity of 26 c.f.s. Flows are controlled by a 20-inch plug valve, motor operated, with automatic controls to maintain a constant flow. Provision was made in the manifold pipe for future installation of a 30-inch meter with a capacity of 62 c.f.s. All piping, valves, and meters are housed in a concrete block structure.

City of Escondido No. 2 Service Connection

The second service connection to serve the City of Escondido was designed and drawings were completed by the end of 1965. The City was proposing additional construction work in this location and it was determined to be more economical to incorporate the Authority's plans and specifications with the City's work and request bids for the combined construction.

By the end of the fiscal year, construction was started under the supervision of the Authority and the City of Escondido.

LEGAL DEPARTMENT ACTIVITIES

Routine legal work of the Authority's general counsel continued throughout the year. While a number of informal requests for annexations were on file, failure of the Metropolitan Water District to establish a final policy regarding annexation fees made it impossible to proceed with any of the pending requests on a formal basis. Accordingly, all requests were forwarded to Metropolitan, where they remained in suspense at the end of the year.

General Counsel supervised preparation and filing by special counsel of the substantial and complicated anti-trust suits against a number of Southern California pipe suppliers. Participation of the Authority as one of the Six Agency members and a member of the Colorado River Board in the preparation and support of legislation in the U. S. Congress was also implemented to enhance the supply of water available in the Colorado River.

Anti-Trust Suits

Since the Authority's formation, it has constructed the first and second barrels of the First San Diego Aqueduct, the feeder and extension lines connecting its member agencies to that Aqueduct, the Second San Diego Aqueduct and the recently completed Cross-Connection between the two main aqueducts. These facilities involved the purchase of many millions of dollars worth of large size pipe from Southern California manufacturers.

Recently a number of these suppliers was indicted for violation of the Federal Anti-trust laws, being charged with a conspiracy to fix prices on

public bidding covering a period in which much of the Authority's purchases occurred. In addition to the penalties imposed by the Federal Courts for the violation of the law, the purchasers of the pipe have a cause of civil action for treble damages and costs of litigation for such increase in price as can be established to result from the illegal conspiracy. The recovery, subject to proof and the establishment of the time of purchases as being within the period of the conspiracy, could be a substantial amount of money.

Suits were filed on behalf of a large number of purchasers in the western states area, the actions being consolidated for procedural purposes in an effort to simplify the proceedings to the extent possible. In any event, however, the procedures and the proofs to be adduced are highly technical and complex, and the litigation will be long and costly. After review by the Legal and Claims Committee, the Board of Directors approved the recommendation of the Committee and General Counsel that special counsel be employed to prosecute the litigation.

So far, activity in the action has been confined to the preliminaries of pleading, preparation and answering of interrogatories, organization of attorneys' committees, employment of expert witnesses, and the numerous hearings, conferences, etc., that precede the kind of major, many-parties litigation that these actions represent. The litigation may require a year or more of preliminary activity before actual trial or trials can be proceeded with, and as of the date of this writing the surface has been barely scratched. It is hoped, of course, that somewhere short of the finality of trial a negotiated settlement fair to all parties may be reached.

Colorado River Basin Project Act

After years of disagreement, the Colorado River Basin States were finally able to reach full agreement upon a comprehensive bill for the development and enhancement of the river. To accomplish unanimous support, the project provided by the legislation was complex and costly. Such unwieldy proposals are difficult to enact, but as was demonstrated throughout the congressional consideration of the bill, any deletion suggested would have been fatal to the coalition.

The proposal included the following:

1. The construction of the Central Arizona Project;
2. Provision that newly constructed lower basin projects would be subject to priorities to supply existing projects, California's priority to be limited to the adjudicated 4.4 million acre feet per annum;
3. The construction of two dams, Bridge and Marble Canyon, on the Colorado between Glenn Canyon and Boulder Dams;
4. Establishment of a basin fund in which all basin revenues would be accumulated to pay off present balance of construction costs and future costs of further developments;

5. Authorization and construction of various local projects in New Mexico, Nevada and Colorado;
6. Assumption by the Federal government of the burden of supplying the Mexican Treaty water;
7. Authorization of a reconnaissance study to determine the possibility of importing an additional 2-1/2 million acrefeet, or more, per annum into the Colorado River and a feasibility report, should the result of the reconnaissance study be favorable.

As might be expected, such an ambitious program created much opposition. In addition to the very substantial costs involved, the chief sources of objections were those of the preservationists, led by California's Sierra Clubs, to any more dams on the Colorado, particularly in the Grand Canyon area, and of the Northwestern (Columbia River) States who interpreted the provisions for a possible import into the Colorado as a raid on the waters of their area.

A long-drawn-out battle was indicated with a failure in the current session of Congress expected; however, with all basin states in agreement, there was cause for faint optimism for ultimate success in subsequent sessions of Congress.

MEMBERSHIP IN THE METROPOLITAN WATER DISTRICT OF SOUTHERN CALIFORNIA

The Authority receives its entire supply of water from The Metropolitan Water District of Southern California and works very closely with that District. A brief outline of the District's organization and operations may be of interest to readers of this report.

The Metropolitan Water District was organized in 1928 under the then newly-enacted Metropolitan Water District Act. The Act originally permitted annexation of cities only. Later, the Metropolitan Act was amended to allow inclusion of districts. The Metropolitan and Authority Acts are quite similar.

The District is governed by a Board of Directors. Each Director represents a constituent member agency. A member agency is entitled to one Director on the Metropolitan Board of Directors plus one additional Director for each \$500 million of assessed valuation. Some agencies have a large number of Directors serving on the District Board while other agencies have but one. As shown on Figure D, the District is comprised of 26 member agencies.

As of June 30, 1966, the Authority had three representatives serving on the District Board of Directors. Mr. Fred A. Heilbron, Chairman of the Authority Board of Directors, serves as Secretary of the Metropolitan

COMPOSITION OF THE METROPOLITAN WATER DISTRICT OF SOUTHERN CALIFORNIA

JUNE 30, 1966

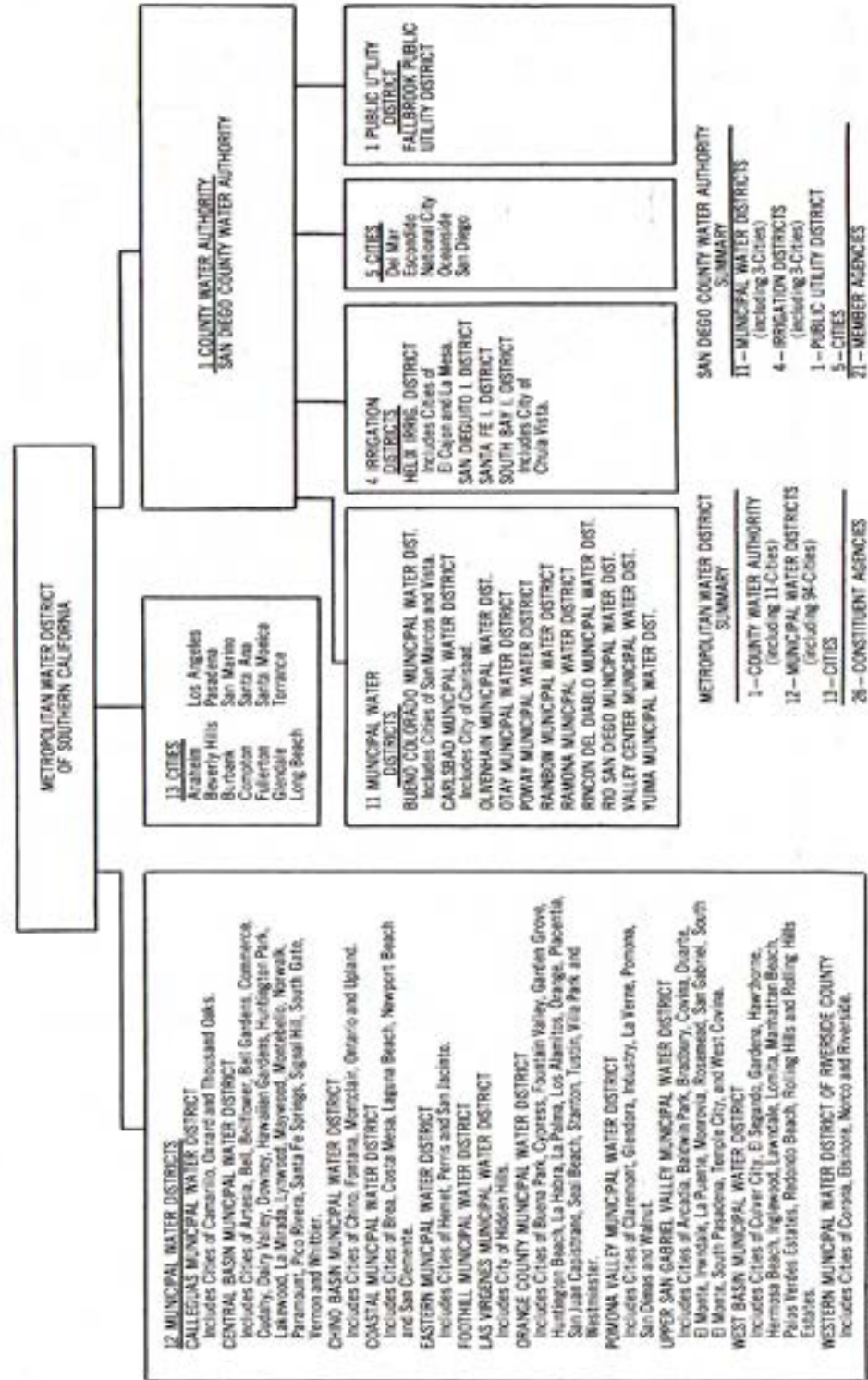


Figure D. Composition of The Metropolitan Water District of Southern California

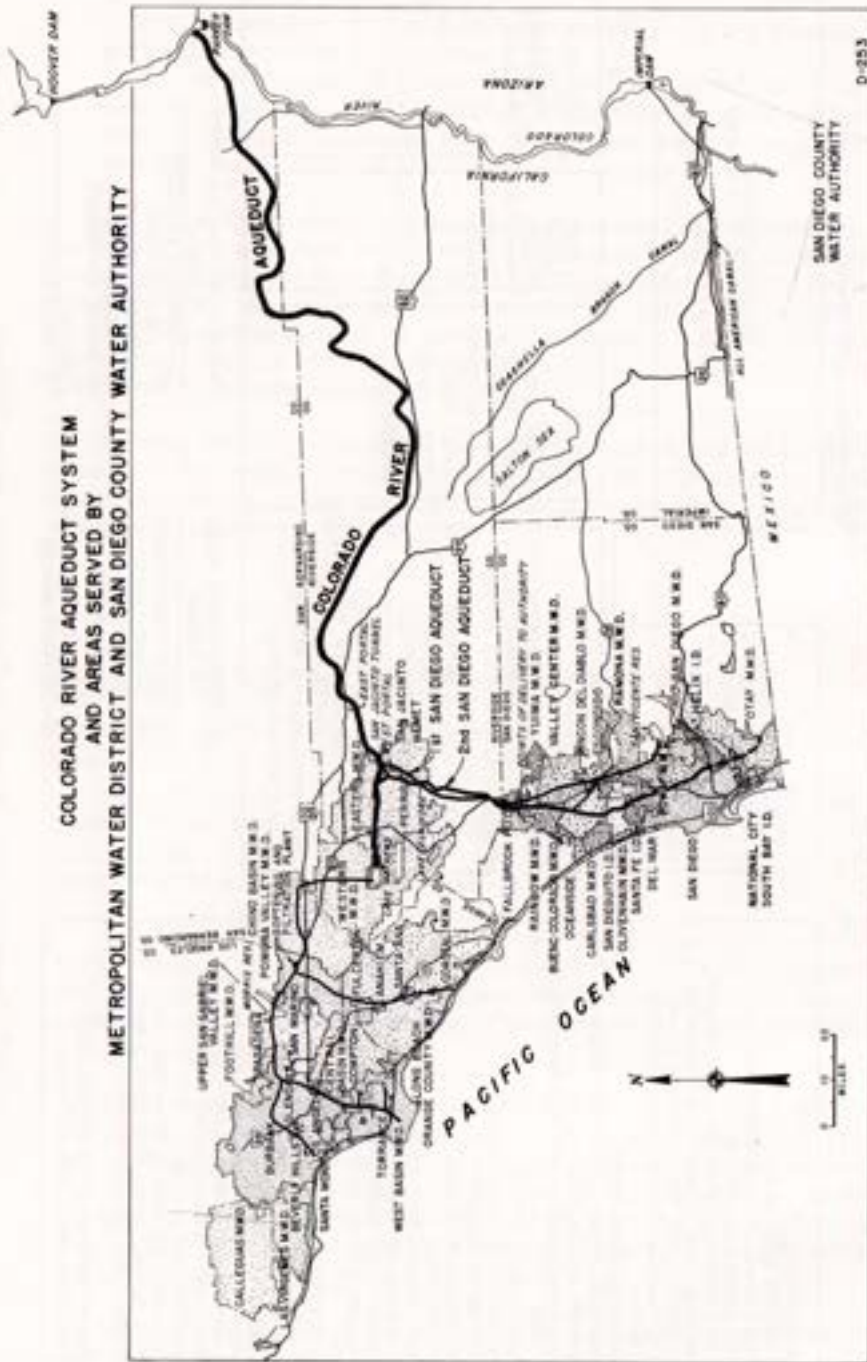


Figure E. Water Systems of Metropolitan Water District and San Diego County Water Authority

Water District Board of Directors, having held this office since 1951. He is also a member of the Executive Committee, the Engineering and Operations Committee, and the Water Problems Committee. Mr. Hans H. Doe, Secretary of the Authority Board of Directors, is a member of the Operations and Personnel Committee and the Lands and Rights of Way Committee. He has served on the Board of Metropolitan for the past seven years. Mr. Harry Griffen, Authority Treasurer, was appointed to the District Board in January of 1963. Director Griffen is a member of the Finance and Insurance Committee and the Lands and Rights of Way Committee.

As of June 30, 1966, the Authority had a total of 188 votes out of 1,914 or 9.82 per cent of the total. When Board action is taken, the votes of an agency are cast as a unit in accordance with the majority vote of that agency's representatives present.

Constituent Member Agencies and Area

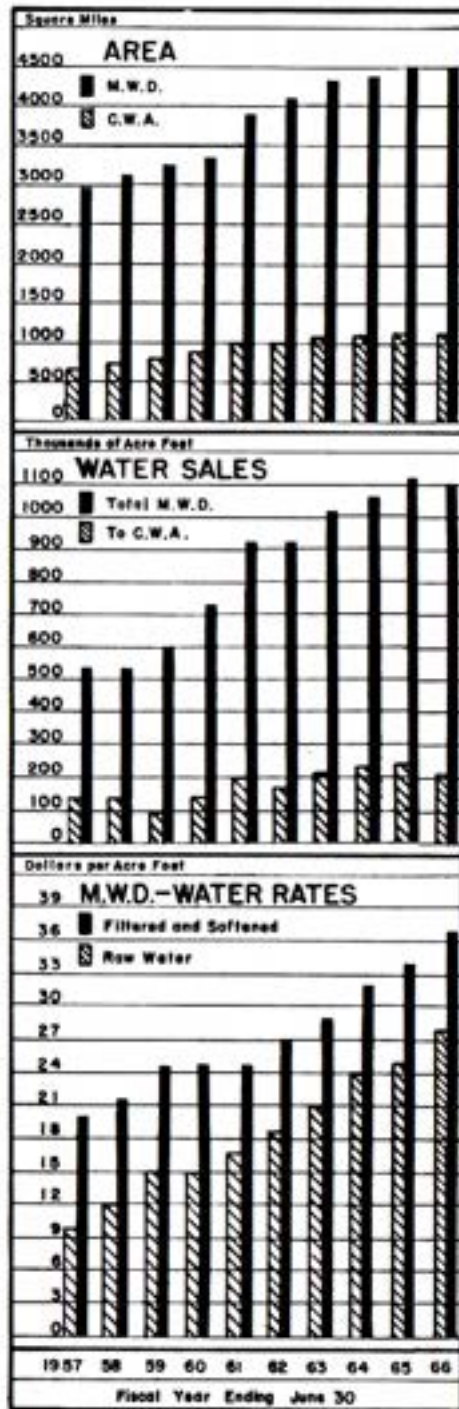
As shown on Figure D, the District is comprised of 26 member agencies, consisting of 13 original cities, one county water authority, and 12 municipal water districts. Portions of Ventura, Los Angeles, Orange, Riverside, San Bernardino, and San Diego Counties are served water by the Metropolitan Water District. Within these districts there is a total of 119 incorporated cities. During the year, 8,122 acres were annexed to the District, of which 887 acres or 11 per cent were also annexed to the Authority. As of June 30, 1966, District area equaled 4,516 square miles (2,890,266 acres), of which 1,125 square miles (719,787 acres) or 24.9 per cent lie within the boundaries of the Water Authority.

Assessed Valuation

Total assessed valuation of taxable property lying within the boundaries of the District as determined by the assessors of the several counties for use in levying taxes for fiscal year 1965-1966 is \$19,143,157,788, an increase of \$1,385,911,048 or 7.8 per cent over the assessed valuation of \$17,757,246,740 for the 1964-65 fiscal year. An amount of \$91,601,240 or 6.6 per cent of this increase occurred with the boundaries of the Authority.

Water Sales

A total of 1,054,056 acre feet of water was delivered by the District during fiscal year 1965-66. Of this amount, a total of 211,530 acre feet or 20.1 per cent was delivered to the Authority. All water delivered to the Authority is untreated Colorado River water. The District operates a filtration and softening plant at La Verne, California, with a capacity of 400 million gallons per day and the recently completed Robert B. Diemer Filtration Plant in Orange County, which has a capacity of 200 million gallons per day. Provision has been made to double the Diemer plant capacity in the future. The Authority cannot be served from either of these plants.



For a breakdown of the Metropolitan Water District deliveries of water to its member agencies, see Table 15.

Tax Rate

The District maintained its tax rate of 14c/\$100 of assessed valuation for 1965-66. In 1946 when the Authority annexed to the District, the tax rate was 50c/\$100. During the past 20 years, progressive reductions in the tax rate have totaled 36 cents.

The tax rate for each year of operation is shown in Table 17. The total District tax levy including regular and special taxes in 1965-66 was approximately \$35,417,327, of which \$3,422,907 or 9.7 per cent was levied against taxable property within the boundaries of the Authority. When the annexation fee is not paid in full in cash at the time of annexation, the Metropolitan Water District, by agreement, levies a special tax each year for 30 years to yield the total agreed upon annexation fee in substantially equal installments. As of June 30, 1966, member agencies of the Authority had assumed back-tax liability totaling \$21,344,329, of which a total of \$10,872,176 had been paid by June 30, 1966.

INDEX OF TABLES

Page

APPENDIX A — STATISTICAL TABLES

1. Area — Authority Member Agencies	42
2. Population Growth — County and Authority Area	43
3. Population — Authority Member Agencies and County	44
4. Assessed Valuation — Authority Member Agencies and County	45
5. Sales of Colorado River Water — Fiscal Year 1965-66	46
6. Water Sales — 1947 to 1966	48
7. Water Production Within Authority Agencies — Fiscal Years 1956-57 to 1965-66	49
8. Water Production of Authority Agencies — Fiscal Year 1965-66	50
9. Unit Water Production — Per Acre and Per Capita 1965-66	51
10. Agricultural Use of Water — Fiscal Year 1965-66	52
11. Authority Storage in San Vicente Reservoir	53
12. Chemical Character of Natural Colorado River Water at West Portal of San Jacinto Tunnel	54
13. Allocation of Right to Purchase Authority Water	55
14. Water Sales by Metropolitan Water District	56
15. Water Production — Metropolitan Water District Constituent Areas	57
16. Analysis of Colorado River Aqueduct Water Taken at West Portal of San Jacinto Tunnel	58
17. Assessed Valuations and Tax Rates of The Metropolitan Water District of Southern California	59

APPENDIX B — FINANCIAL REPORT

Letter of Transmittal	60
Auditor's Report	63
Exhibit A. Balance Sheet	64
Exhibit B. Statement of Changes in Surplus and Reserves	66
Exhibit C. Statement of Revenue and Expense	68
Notes to Financial Statements	69
Schedule 1. Statement of Operating Expense	72
Schedule 2. Statement of Revenue — Estimated and Actual	73
Schedule 3. Statement of Appropriations and Expenditures	74
Schedule 4. Summary Statement of Cash Receipts and Disbursements	76
Schedule 5. Statement of Investments	77
Schedule 6. Statement of Bonds Payable	78
Schedule 7. Property, Plant and Equipment and Accumulated Depreciation	80
Comments	82
Table F-1. Tax Assessments and Collections	83
Table F-2. Assessed Valuations and Tax Rates	84
Table F-3. Tax Levies and Tax Collections	85
Table F-4. Legal Debt Margin	86
Table F-5. Insurance Coverage	87
Table F-6. Metropolitan Water District Annexation Charges, Assessments and Balances on Authority Areas	88
Table F-7. San Diego County Water Authority Annexation Charges, Assessments and Balances	90

SAN DIEGO COUNTY WATER AUTHORITY

Table 1

AREA - AUTHORITY MEMBER AGENCIES

Member Agencies	Area Within Authority			Percent of Total Authority Area 6-30-66
	As of 6/30/65	Changes During Year	As of 6/30/66	
	acres	acres	acres	
Buena Colorado M. W. D.	48,974	0	(3) 48,974	6.80
In City of San Marcos	(6,344)	(+ 1,750)	(8,094)	(1.12)
In City of Vista	(7,304)	(+ 205)	(7,509)	(1.04)
Carlsbad M. W. D.	20,621	(2) - 19	(4) 20,602	2.86
In City of Carlsbad	(6,733)	0	(6,733)	(0.94)
Del Mar, City of	1,082	0	1,082	0.15
Escondido, City of	7,351	+ 1,143	8,494	1.18
Fallbrook Public Utility District .	15,469	+ 1	15,470	2.15
Helix Irrigation District	31,185	0	(5) 31,185	4.33
In City of El Cajon	(7,087)	(+ 104)	(7,191)	(1.00)
In City of La Mesa	(4,864)	(+ 36)	(4,900)	(0.68)
National City, City of	5,107	+ 14	5,121	0.71
Oceanside, City of	20,651	+ 997	21,648	3.01
Olivenhain M. W. D.	27,199	- 37	(11) 27,162	3.77
Otay M. W. D.	64,612	(2) - 40	(6) 64,572	8.97
Poway M. W. D.	22,980	0	22,980	3.19
Rainbow M. W. D.	40,093	(2) - 979	(7) 39,114	5.43
Ramona M. W. D.	41,365	0	41,365	5.75
Rincon del Diabolo M. W. D.	21,478	(2) - 395	(8) 21,083	2.93
Rio San Diego M. W. D.	54,105	0	54,105	7.52
San Diego, City of	193,686	+ 179	193,865	26.93
San Dieguito Irrigation District ...	4,929	- 3	4,926	0.69
Santa Fe Irrigation District	10,141	+ 40	(9) 10,181	1.42
South Bay Irrigation District	15,962	(2) - 14	(10) 15,948	2.22
In City of Chula Vista	(9,324)	(+ 274)	(9,598)	(1.33)
Valley Center M. W. D.	59,510	0	59,510	8.27
Yuma M. W. D.	12,400	0	12,400	1.72
Total Authority Area	718,900	+ 887	719,787	100.00
San Diego County			2,725,100	

- (1) Revised to conform with data received from agency.
- (2) Includes area annexed by an adjacent city member agency but still in district, being an overlapping area and considered here as being part of the city.
- (3) Does not include 2,608 acres overlapping in City of Oceanside and 284 acres overlapping in City of Escondido.
- (4) Does not include 236 acres overlapping in City of Oceanside.
- (5) Does not include 3 acres overlapping in City of San Diego.
- (6) Does not include 6,787 acres overlapping in City of San Diego.
- (7) Does not include 1,138 acres overlapping in City of Oceanside.
- (8) Does not include 5,529 acres overlapping in City of Escondido and 1 acre overlapping in City of San Diego.
- (9) Does not include 3 acres overlapping in City of San Diego.
- (10) Does not include 217 acres overlapping in City of San Diego and 339 acres overlapping in City of National City.
- (11) Does not include 5 acres overlapping in City of San Diego.

TABLES

Table 2

POPULATION GROWTH - COUNTY AND AUTHORITY AREA

1910 to 1966

(Includes Resident Military Personnel)

Year (as of April 1)	COUNTY		AUTHORITY		Percent of County Population in Authority
	Total Population (1)	Average Annual Growth	Total Population	Average Annual Growth	
1910 . . .	61,665				
		5,058			
1920 . . .	112,248				
		9,741			
1930 . . .	209,659				
		7,969			
1940 . . .	289,348				
1946 . . (3)	502,804	26,746 (3)	440,659		88
			2,897		
1950 . . .	556,808		(2) 451,886		81
		44,071		50,451	
1960 . . .	1,003,520		(2) 956,400		95
		108,080		59,100	
1961 . . . (4)	1,111,600		(5) 1,015,500		91
		56,100		69,500	
1962 . . (4)	1,167,700		(5) 1,085,000		93
		3,600		5,200	
1963 . . (4)	1,164,100		(5) 1,090,200		94
		13,600		34,800	
1964 . . (4)	1,177,700		(5) 1,125,000		96
		16,300		25,000	
1965 . . (4)	1,194,000		(5) 1,150,000		96
		56,000		25,000	
1966 . . (4)	1,250,000		(5) 1,175,000		94

- (1) County population from U. S. Census Bureau Reports.
- (2) Authority population based on U. S. Census Bureau Reports.
- (3) Based on Special Census, U. S. Census Bureau, exclusive of emergency military personnel due to World War II.
- (4) Estimated by San Diego Chamber of Commerce.
- (5) Estimated by Authority member agencies.

Table 3
POPULATION - AUTHORITY MEMBER AGENCIES AND COUNTY
(Includes Resident Military Personnel)

Member Agencies	Population - U. S. Census				Annual Increase 1960-1966		Density of Population 1966
	Area 6/30/66	1960	1966	Decade Increase 1960-60	1966 Estimate	Per Acre	
	Acres	(1)	(2)	Percent	(3)	Percent	Per Sq. Mile
Bueno Colorado M. W. D.	48,974	---	31,500	---	* 33,000	1	0.67
In City of San Marcos	(8,094)	---	---	---	(2,400)	---	0.42
In City of Vista	(7,509)	---	---	---	(9,800)	---	2.64
Carlsbad M. W. D.	20,602	---	10,000	---	12,350	4	0.60
In City of Carlsbad	(6,733)	---	(9,400)	---	(12,300)	5	1.63
Del Mar, City of	1,082	---	---	---	3,900	---	3.60
Escondido, City of	8,494	6,600	18,500	180	27,300	8	3.21
Fallbrook Public Utility District	15,470	5,500	10,000	82	10,900	1	0.70
Helix Irrigation District	31,185	44,160	122,100	176	* 150,100	4	4.81
In City of El Cajon	(7,191)	(5,600)	(37,300)	566	(44,800)	3	6.23
In City of La Mesa	(4,900)	(10,946)	(29,900)	173	(36,300)	4	7.41
National City, City of	5,121	21,200	32,500	52	35,100	1	6.85
Oceanside, City of	21,648	12,880	24,700	92	38,100	9	1.76
Olivenhain M. W. D.	27,162	---	200	---	550	29	0.02
Oray M. W. D.	64,372	---	5,400	---	12,200	21	0.19
Poway M. W. D.	22,980	---	4,800	---	9,100	15	0.40
Rainbow M. W. D.	39,114	---	2,800	---	3,750	6	0.10
Ranoma M. W. D.	41,365	---	5,600	---	5,900	1	0.14
Rincon Del Diablo M. W. D.	21,083	---	14,000	---	16,600	3	0.79
Rio San Diego M. W. D.	54,106	2,000	25,500	1,175	35,400	6	0.65
San Diego, City of	193,965	334,387	557,200	67	670,000	3	3.46
San Diego Irrigation District	4,926	6,223	15,000	141	20,000	6	4.06
Santa Fe Irrigation District	10,181	3,000	7,700	137	8,900	3	0.87
South Bay Irrigation District	15,948	28,930	64,300	122	76,500	3	4.80
In City of Chula Vista	(9,598)	(15,930)	(42,400)	166	(53,700)	4	3.59
Valley Center M. W. D.	59,510	---	5,000	---	4,500	---	0.08
Yulma M. W. D.	12,400	---	---	---	950	---	0.08
Total Authority	719,787	451,880	956,400	112	1,175,000	4	1.83
San Diego County	2,725,100	336,810	1,003,520	80	1,250,000	4	0.46

(1) Population in agencies other than cities was furnished by agencies. (2) Estimated by agencies. * Revised from 1965 Report.

Table 4
ASSESSED VALUATIONS - AUTHORITY MEMBER AGENCIES AND COUNTY

Member Agencies	Area 6/30/66		Assessed Valuation - Secured and Unsecured 1965-66		1966-67	
	Acres	Total	Total	Percent Increase	Total	Per Acre
	Acres	1964-65	1965-66	1965-66	1966-67	Per Acre
Bueno Colorado M. W. D.	48,974	\$ 57,025,730	\$ 66,205,780	16.1	\$ 68,990,470	\$ 1,409
Carlsbad M. W. D.	20,602	37,612,630	45,072,540	19.8	47,810,060	2,321
Del Mar, City of	1,082	9,410,200	11,880,070	20.9	11,219,260	10,369
Escondido, City of	8,494	36,988,190	42,131,900	13.9	44,682,580	5,260
Fallbrook Public Utility District	15,470	14,722,100	15,224,080	3.4	17,631,960	1,133
Helix Irrigation District	31,183	217,798,250	218,641,620	0.4	221,685,770	7,109
National City, City of	5,121	41,230,210	42,312,280	2.6	43,040,280	8,405
Oceanside, City of	21,648	46,620,690	58,373,870	25.0	60,503,310	2,795
Olivenhain M. W. D.	27,162	2,388,810	7,401,030	236.6	9,787,070	360
Poway M. W. D.	64,372	27,297,690	29,478,130	8.0	31,835,120	493
Rainbow M. W. D.	22,980	15,860,440	16,276,320	2.6	16,638,700	724
Ranoma M. W. D.	39,114	11,166,610	12,054,880	8.0	21,347,510	546
Rincon del Diablo M. W. D.	41,365	8,888,500	9,072,210	2.1	9,260,910	224
Rio San Diego M. W. D.	21,083	26,061,110	25,869,420	- 0.4	24,953,280	1,184
San Diego, City of	54,105	40,785,740	41,839,730	2.6	42,743,660	790
San Diego Irrigation District	193,965	1,016,515,350	1,048,645,250	3.1	1,058,739,530	5,461
Santa Fe Irrigation District	8,626	24,490,490	27,399,830	11.9	27,361,920	5,555
South Bay Irrigation District	10,181	20,953,370	25,465,710	21.5	26,681,130	2,522
South Bay Irrigation District	15,948	120,749,830	124,915,060	3.4	130,560,390	8,187
Valley Center M. W. D.	59,510	8,919,880	9,382,410	4.1	10,147,650	171
Yulma M. W. D.	12,400	2,599,250	2,647,590	1.9	2,730,460	220
Total Authority	719,787	\$ 1,788,388,770	\$ 1,879,990,010	5.1	\$ 1,927,254,740	\$ 2,678
San Diego County	(1) 1,250,000	\$ 1,882,870,770	\$ 1,960,868,410	5.2	\$ 2,039,339,560	\$ 1,631

(1) Excluding 1,475,100 acres of tax-exempt lands in San Diego County.

SAN DIEGO COUNTY WATER AUTHORITY

Table 5
SALES OF COLORADO RIVER WATER - FISCAL YEAR 1965-66

(All Figures in Acre Feet)

Member Agencies	July	August	Sept.	Oct.	Nov.	Dec.	Total 6 Months
Bueno Colorado M. W. D.	1,514.9	1,660.5	1,306.9	1,340.6	649.3	245.4	6,717.6
Carlstad M. W. D.	646.4	792.8	686.9	714.8	376.3	62.9	3,280.1
Del Mar, City of	0	0	0	0	0	0	0
Escondido, City of	370.0	378.6	304.3	282.5	200.3	162.1	1,697.8
Fallbrook P. U. D.	1,321.3	1,538.2	1,253.4	1,472.4	562.8	81.7	6,229.8
Helix I. D.	3,056.9	2,910.3	1,947.0	2,951.1	3,091.4	1,472.8	15,429.5
National City & South Bay I. D.	1,503.2	1,531.3	1,275.5	1,056.6	830.0	429.1	6,625.7
Oceanside, City of	900.2	878.0	736.1	772.1	424.0	318.4	4,028.8
Olivenhain M. W. D.	140.5	126.7	133.7	120.8	36.6	10.0	568.3
Otay M. W. D.	793.5	988.8	971.5	1,176.8	441.3	89.9	4,461.8
Poway M. W. D.	446.3	474.4	355.6	391.9	153.6	92.4	1,914.2
Rainbow M. W. D.	1,711.5	1,877.0	1,587.8	1,794.7	703.5	62.0	7,736.5
Ramona M. W. D.	152.0	116.1	90.6	95.0	47.8	36.6	538.1
Rincon del Diablo M. W. D.	1,215.0	1,051.9	648.0	663.2	574.9	160.1	4,313.1
Rio San Diego M. W. D.	576.2	615.4	437.4	505.0	300.6	161.3	2,595.9
San Diego, City of	9,538.3	9,538.5	7,814.2	9,275.5	7,546.2	4,933.6	48,646.3
San Dieguito I. D.	434.4	589.2	467.1	375.0	280.8	0	2,146.5
Santa Fe I. D.	434.4	589.2	467.0	375.0	280.8	0	2,146.4
Valley Center M. W. D.	964.0	1,061.3	793.3	887.9	387.0	47.0	4,140.5
Yuma M. W. D.	206.6	242.6	220.6	236.0	142.8	0	1,048.6
Total Sales to Agencies	25,925.6	26,960.8	21,406.9	24,486.9	17,030.0	8,365.3	124,265.5
Total Sales to Others	4.5	7.0	6.9	4.5	9.5	7.4	39.8
Total Sales to Agencies and Others	25,930.1	26,967.8	21,503.8	24,491.4	17,039.5	8,372.7	124,305.3
Total to Authority Storage	+ 77.5	+ 89.9	+ 66.9	+ 4.5	0	0	+ 238.8
Total from Authority Storage	-1,215.0	-1,667.3	-1,762.7	-2,944.8	-1,278.4	- 256.9	-9,125.1
Total to Metropolitan Storage	----	----	----	----	----	+ 197.2	+ 197.2
Total from Metropolitan Storage	----	----	----	----	----	0	0
Total Flow in Authority System	24,792.6	25,390.4	19,808.0	21,551.1	15,761.1	8,313.0	115,616.2
Rate of Flow (c. f. s.)							
To Agencies and Others	421.7	438.6	361.4	398.3	286.4	136.2	340.6
To Authority Storage	+ 1.3	+ 1.4	+ 1.1	+ 0.1	0	0	+ 0.7
From Authority Storage	- 18.8	- 27.1	- 29.6	- 47.9	- 21.5	- 4.2	- 25.0
To Metropolitan Storage	----	----	----	----	----	+ 3.2	+ 0.5
From Metropolitan Storage	----	----	----	----	----	0	0
Flow in Authority System	403.2	412.9	332.9	350.5	264.9	135.2	316.8

TABLES

Table 5
(Continued)

Jan	Feb	March	April	May	June	Total 6 Months	Yearly Total	Yearly Average c. f. s.
192.8	270.2	512.4	1,018.7	1,225.5	1,440.0	4,659.6	11,377.2	15.7
228.7	181.7	413.8	685.1	721.4	592.4	2,823.1	6,103.2	8.4
0	0	0	52.8	56.1	69.3	178.2	178.2	0.2
137.5	158.6	191.9	270.3	337.0	364.0	1,459.3	3,157.1	4.4
203.6	382.3	715.9	936.9	1,124.6	1,190.8	4,534.1	10,763.9	14.9
430.4	0	1,961.4	2,452.0	2,822.5	2,869.6	10,535.9	25,965.4	35.9
171.3	268.3	457.6	701.9	731.9	950.1	3,281.1	9,906.8	13.7
340.0	296.3	484.9	650.5	744.4	820.7	3,336.8	7,365.6	10.2
0	11.6	48.2	76.1	113.2	92.2	341.3	909.6	1.2
173.3	131.3	231.8	398.9	458.7	823.1	2,217.1	6,078.9	9.2
86.9	68.0	214.4	309.3	327.5	396.3	1,402.4	3,316.6	4.6
261.9	269.3	883.8	1,320.0	1,457.8	1,662.0	5,854.8	13,591.3	18.8
27.6	29.6	50.4	65.9	86.9	96.3	356.7	894.8	1.2
222.7	192.2	611.1	1,044.9	1,083.9	488.3	3,643.1	7,956.2	11.0
192.5	164.1	249.8	391.3	450.7	548.5	1,996.9	4,592.8	6.3
1,204.7	1,259.1	3,548.5	4,905.7	14,123.0	12,857.9	37,928.9	86,575.2	119.6
0	0	0	0	0	163.3	163.3	2,309.8	3.2
0	0	0	0	0	163.4	163.4	2,309.8	3.2
84.4	62.7	350.3	676.8	888.5	1,029.9	3,092.6	7,233.1	10.0
0	0	32.1	128.4	222.8	271.4	654.7	1,703.3	2.3
3,958.3	3,725.3	10,958.3	16,115.5	26,976.4	26,889.5	88,623.3	212,888.8	294.0
12.0	6.5	4.5	3.7	3.3	3.0	33.0	72.8	0.1
3,970.3	3,731.8	10,962.8	16,119.2	26,979.7	26,892.5	88,656.3	212,961.6	294.1
+ 45.8	+1,005.8	+2,000.0	+1,418.2	+1,496.5	+1,609.0	+7,575.3	+ 7,814.1	+10.8
- 484.6	- 69.6	0	0	- 28.2	- 20.0	- 602.4	- 9,727.5	-13.4
+6,785.3	+9,297.4	+7,218.6	+1,827.8	0	0	+25,129.1	+25,326.3	+35.0
0	0	0	0	-8,785.0	-8,766.6	-17,561.6	-17,561.6	-24.3
10,316.8	13,965.4	20,181.4	19,365.2	19,653.0	19,714.9	103,196.7	218,812.9	302.2
64.6	67.2	178.3	270.9	438.8	451.9	246.9	294.1	
+ 0.7	+ 18.1	+ 32.5	+ 23.8	+ 24.3	+ 27.0	+ 21.1	+ 10.8	
- 7.9	- 1.3	0	0	- 0.5	- 0.3	- 1.7	- 13.4	
+ 110.4	+ 167.4	+ 117.4	+ 30.7	0	0	+ 70.0	+ 35.0	
0	0	0	0	- 143.0	- 147.3	- 48.9	- 24.3	
167.8	251.4	328.2	325.4	319.6	331.3	287.4	302.2	

SAN DIEGO COUNTY WATER AUTHORITY

Table 6
WATER SALES - 1947 to 1966
(All figures in acre feet)

Member Agencies	1947-56(a)	1958-59	1959-60	1960-61	1961-62	1962-63	1963-64	1964-65	1965-66	Totals
Buena Colorado M. W. D.	19,041	2,677	3,735	10,143	9,534	9,738	9,358	10,065	11,377	85,498
Carlsbad M. W. D.	6,035	3,111	3,588	5,421	5,692	7,196	6,392	6,217	6,103	49,755
Del Mar, City of	-----	-----	-----	-----	-----	0	0	0	178	178
Escondido, City of	7,486	2,003	2,142	2,757	2,436	2,623	2,863	3,112	3,107	28,569
Fallbrook Public Utility District ..	47,567	9,032	8,106	10,352	8,876	10,228	10,517	10,580	10,764	126,022
Helix Irrigation District	86,829	14,359	14,176	23,754	22,324	27,398	24,008	28,235	28,965	270,788
National City & South Bay I. D. . .	89,113	5,509	10,656	12,619	11,917	12,555	12,076	12,597	9,907	177,249
Oceanside, City of	14,452	3,665	3,528	3,923	3,786	4,442	6,397	7,276	7,568	54,837
Olivenhain M. W. D.	-----	-----	12	12	220	570	701	814	910	3,227
Otay M. W. D.	2	199	639	1,120	1,749	5,332	5,008	6,045	6,679	26,773
Poway M. W. D.	3,229	1,311	1,567	2,206	2,009	2,308	2,754	3,196	3,317	22,096
Rainbow M. W. D.	10,927	6,094	5,662	7,615	7,458	9,503	11,197	11,930	13,591	83,977
Rainbow M. W. D.	29	169	322	469	517	651	729	753	895	4,534
Rincon del Diablo M. W. D.	15,792	3,945	2,244	7,968	6,157	7,581	9,445	9,314	7,956	69,502
Rio San Diego M. W. D.	2,713	1,235	2,138	2,935	2,699	3,575	3,479	4,085	4,593	27,662
San Diego, City of	598,587	41,364	83,892	88,323	87,481	104,601	116,100	105,814	86,575	1,322,737
San Diego Irrigation District ..	8,569	0	1,488	3,548	2,617	3,008	2,836	2,724	2,310	27,300
Santa Fe Irrigation District	6,830	0	1,346	3,258	2,537	2,660	2,509	2,509	2,310	23,959
Valley Center M. W. D.	1,561	776	1,358	2,124	2,170	2,902	3,462	5,331	7,233	26,997
Yuma, M. W. D.	-----	-----	-----	-----	-----	-----	0	220	1,703	1,923
Total Sales to Agencies	927,462	94,589	156,557	188,546	180,361	217,371	229,811	230,457	212,859	2,438,493
Total Sales to Others	250	275	271	115	106	78	63	64	73	1,285
Total to Authority Storage	-64,504	-417,671	+4,968	-10,568	+7,972	+8,365	+3,540	+9,794	+7,814	+125,196
Total from Authority Storage	-41,254	-11,057	-19,585	-972	-3,601	-5,342	-1,467	-26	-9,728	-90,032
Total to Metropolitan Storage	-----	-----	-----	-----	-----	-----	-----	-----	+25,326	+25,326
Total from Metropolitan Storage	-----	-----	-----	-----	-----	-----	-----	-----	-17,561	-17,561
Total Flow in Authority System ..	940,962	101,478	142,241	198,257	184,658	220,472	231,947	240,679	218,813	2,479,707
Rate of Flow (c. f. s.)	-----	-----	186.9	273.9	255.3	304.5	319.5	332.4	302.2	184.1
To Agencies and Others	120.9	131.0	216.1	260.6	249.3	300.4	316.6	319.0	294.1	181.1
To Authority Storage	7.1	+ 24.4	+ 6.8	+ 14.6	+ 11.0	+ 11.5	+ 4.9	+ 13.5	+ 10.8	+ 9.3
From Authority Storage	5.4	- 15.2	- 27.0	- 1.3	- 5.0	- 7.4	- 2.0	- 0.1	- 13.4	- 6.9
To Metropolitan Storage	-----	-----	-----	-----	-----	-----	-----	-----	+ 35.0	+ 1.9
From Metropolitan Storage	-----	-----	-----	-----	-----	-----	-----	-----	- 24.3	- 1.3
Flow in Authority System	122.6	140.2	186.9	273.9	255.3	304.5	319.5	332.4	302.2	184.1

(a) The operation of the first Aqueduct was formally initiated on November 27, 1947. For sales in intervening years see previous reports.

SAN DIEGO COUNTY WATER AUTHORITY

Table 7

WATER PRODUCTION WITHIN AUTHORITY AGENCIES - FISCAL YEARS 1956-57 to 1965-66
(All Figures in Acre Feet)

Member Agencies	From Local and Authority Supplies									
	1956-57	1957-58	1958-59	1959-60	1960-61	1961-62	1962-63	1963-64	1964-65	1965-66
Buena Colorado M. W. D.	13,058	11,098	15,000	13,116	14,066	11,937	13,763	12,743	13,022	13,616
Carlsbad M. W. D.	2,891	2,607	3,923	4,980	7,091	6,711	7,285	6,412	6,295	6,347
Del Mar, City of	(a)	(a)	(a)	(a)	(a)	597	684	691	629	650
Escondido, City of	1,816	1,730	2,213	2,694	3,136	3,211	3,628	3,253	4,275	4,556
Fallbrook Public Utility District ..	8,095	6,709	10,013	9,130	10,724	8,999	10,379	10,712	10,716	11,016
Helix Irrigation District	16,541	15,848	21,595	21,689	24,029	21,936	23,591	22,943	25,069	26,036
National City and South Bay I. D. . .	12,878	12,316	14,597	13,299	14,148	13,529	14,219	14,021	14,143	14,614
Oceanside, City of	4,369	4,204	5,197	5,081	5,374	5,030	5,795	6,064	7,424	7,447
Olivenhain M. W. D.	(a)	(a)	(a)	(a)	12	145	570	620	717	910
Otay M. W. D.	(a)	2	146	470	967	1,460	5,351	5,008	6,045	6,679
Poway M. W. D.	917	755	1,310	1,567	2,205	2,009	2,508	2,754	3,196	3,317
Rainbow M. W. D.	4,834	4,652	6,976	6,748	8,771	8,333	10,400	11,431	12,629	14,149
Ranoma M. W. D.	152	178	351	320	541	643	744	825	859	1,019
Rincon del Diablo M. W. D.	9,451	7,981	11,703	10,309	11,062	9,832	11,847	12,108	11,945	12,613
Rio San Diego M. W. D.	1,457	1,438	2,311	2,886	3,526	3,329	3,928	3,936	4,580	4,988
San Diego, City of:										
Inside City	71,250	70,652	80,060	80,796	84,345	81,156	89,825	92,451	95,032	102,174
Outside City (not in Authority) ..	2,856	2,609	3,598	4,178	4,640	5,007	4,278	4,498	4,922	5,326
San Diego Irrigation District	3,607	3,524	4,247	3,757	4,212	3,568	3,847	3,743	4,057	3,920
Santa Fe Irrigation District	3,509	2,807	3,583	3,487	3,927	3,549	3,706	3,958	3,725	3,968
Valley Center M. W. D.	791	769	776	1,358	2,124	2,170	2,902	3,452	5,331	7,333
Yuma, M. W. D.	(a)	(a)	(a)	(a)	(a)	(a)	(a)	6,625	9,282	8,142
Total	158,472	148,579	187,839	186,115	205,540	192,354	219,280	231,548	243,893	258,720

* Use of Colorado River water began this year. All other agencies' use began prior to 1955-57. See previous reports.
(a) Not available

Table 8
WATER PRODUCTION OF AUTHORITY AGENCIES - FISCAL YEAR 1965-66

Member Agencies	TOTAL WATER PRODUCTION				SOURCE OF WATER			
	AS m. g. d.	AS c. f. s.	AS ac. ft./yr.	AS %	Local Supply		Authority Supply	
					Amount ac. ft.	Percent	Amount ac. ft.	Percent
Bueno Colorado M. W. D.	12.16	18.81	13,616.0		2,322.6	17.1	11,293.4	82.9
Carlsbad M. W. D.	5.67	8.77	6,347.3		215.7	3.4	6,131.6	96.6
Del Mar, City of	0.58	0.90	649.7		2.5	0.4	647.2	99.6
Escondido, City of	4.07	6.29	4,356.0		1,398.9	30.7	3,157.1	69.3
Fallbrook Public Utility District	9.83	15.22	11,015.8		252.2	2.3	10,763.7	97.7
Helix Irrigation District	23.24	35.90	26,036.4		221.1	0.9	25,814.3	99.1
National City and South Bay I. D.	13.05	20.19	14,614.0		5,566.0	38.0	9,058.0	62.0
Oceanside, City of	6.65	10.29	7,447.0		39.4	0.5	7,407.6	99.5
Olivenshain M. W. D.	0.81	1.26	909.6		0	0	909.6	100.0
Olney M. W. D.	5.96	9.22	6,878.9		0	0	6,878.9	100.0
Poway M. W. D.	2.96	4.58	3,316.6		0	0	3,316.6	100.0
Rainbow M. W. D.	12.63	19.34	14,148.6		580.8	4.1	13,567.8	95.9
Ranoma M. W. D.	0.91	1.41	1,019.3		124.5	12.2	894.8	87.8
Rincon del Diablo M. W. D.	11.20	17.42	12,613.3		4,607.1	36.9	7,956.2	63.1
Rio San Diego M. W. D.	4.45	6.89	4,988.4		414.2	8.3	4,547.2	91.7
San Diego, City of:								
Inside City	91.22	141.13	102,174.2		4,879.2	4.8	97,295.0	95.2
Outside City (Not in Authority)	4.75	7.36	5,325.7		5,325.7	100.0	0	0
San Diegoito Irrigation District	3.50	5.41	3,919.9		1,130.8	28.8	2,789.1	71.2
Santa Fe Irrigation District	3.54	5.48	3,967.8		1,165.2	29.4	2,802.6	70.6
Valley Center M. W. D.	6.46	9.99	7,233.1		0	0	7,233.1	100.0
Yuma M. W. D.	7.27	11.24	8,141.6		6,445.2	78.2	1,696.4	20.8
Total	230.97	357.36	268,719.5		34,732.1	13.4	223,987.4	86.6

Note: This table is a compilation of data furnished by member agencies.
Figures include losses in transmission and distribution systems but not in conservation reservoirs.

Table 9
UNIT WATER PRODUCTION - PER ACRE AND PER CAPITA 1965-66

Member Agencies	Gross Area (±) acres	Total Production of Water ac. ft.	Estimated Area Served by Water System acres	Water Production Per Area Served ac. ft./acre/yr.	Water Production Per Capita ac. ft./cap./yr.
Bueno Colorado M. W. D.	48,974	13,616.0	28,150	0.48	* 33,000
Carlsbad M. W. D.	20,602	6,347.5	15,000	0.42	12,350
Del Mar, City of	1,082	649.7	1,080	0.60	3,900
Escondido, City of	8,494	4,356.0	7,750	0.59	27,300
Fallbrook Public Utility District	15,479	11,015.9	7,600	1.45	10,800
Helix Irrigation District	31,185	26,036.4	28,400	0.92	*150,100
National City, City of	5,121	3,771.0	3,840	0.98	35,100
Oceanside, City of	21,643	7,447.0	10,180	0.73	38,100
Olivenshain M. W. D.	27,162	909.6	8,600	0.11	550
Olney M. W. D.	64,572	6,878.9	23,300	0.29	12,200
Poway M. W. D.	22,980	3,316.6	6,500	0.51	9,100
Rainbow M. W. D.	39,114	14,148.6	* 8,000	1.77	3,750
Ranoma M. W. D.	41,365	1,019.3	6,500	0.16	5,900
Rincon del Diablo M. W. D.	21,083	12,613.3	10,960	1.15	16,000
Rio San Diego M. W. D.	54,105	4,988.4	* 11,200	0.45	35,400
San Diego, City of:	190,865	(1) 102,174.2	73,100	1.40	670,000
Inside City	4,926	3,919.9	4,150	0.94	20,000
San Diegoito Irrigation District	10,181	3,967.8	* 6,500	0.61	8,900
Santa Fe Irrigation District	15,948	10,843.0	9,650	1.12	76,500
South Bay Irrigation District	59,510	7,233.1	* 8,000	0.90	* 4,500
Valley Center M. W. D.	12,400	8,141.6	3,800	2.14	950
Yuma M. W. D.	718,757	253,393.8	282,300	0.90	1,175,000
Total and Average					0.22

(1) Does not include production by City of San Diego for areas outside City (not in Authority).
(2) Does not include overlapping area as shown in Table 1.
* Revised by Agency.

Table 10
AGRICULTURAL USE OF WATER - FISCAL YEAR 1965-66

Member Agencies	Total Water Production (ac. ft.)	Water Used for Agricultural Purposes			Percent of Agricultural Water to Total P production	
		From Local Supply (ac. ft.) (%)	From Authority (ac. ft.) (%)	Total (ac. ft.)		
Bueno Colorado M. W. D.	15,616.0	1,480.2	7,763.1	83.9	9,248.3	67.9
Carlsbad M. W. D.	6,347.5	44.5	4,425.6	99.0	4,470.1	70.4
Del Mar, City of	649.7	(b)	(b)	(a)	(b)	(b)
Escondido, City of	4,556.0	(a)	(a)	(a)	(a)	(a)
Fallbrook, Public Utility District	11,015.9	222.1	9,018.9	97.7	9,241.0	89.2
Helix Irrigation District	26,098.4	62.3	8,156.8	99.2	8,219.1	31.6
National City & South Bay I. D.	14,614.0	260.3	935.0	76.9	1,215.3	8.2
Oceanside, City of	7,447.0	(a)	(a)	(a)	(a)	(a)
Olivenhalm M. W. D.	909.5	0	860.4	100.0	860.4	94.6
Otay M. W. D.	6,678.9	0	4,212.3	100.0	4,212.3	63.1
Poway M. W. D.	3,316.6	0	2,204.8	100.0	2,204.8	66.5
Rainbow M. W. D.	14,148.6	569.0	13,249.9	95.9	13,818.9	97.7
Ramona M. W. D.	1,019.3	36.6	417.7	91.9	454.3	44.6
Rincon del Diabolo M. W. D.	12,613.3	3,635.3	6,331.2	63.5	9,966.5	79.0
Rio San Diego M. W. D.	4,988.4	50.2	188.5	79.0	238.7	4.8
San Diego, City of	102,174.2	238.1	3,331.1	95.7	3,569.2	3.5
San Dieguito Irrigation District	3,919.9	(b)	(b)	(b)	(b)	(b)
Santa Fe Irrigation District	3,967.8	(b)	(b)	(b)	(b)	(b)
Valley Center M. W. D.	7,233.1	0	6,778.6	100.0	6,778.6	93.7
Yulma M. W. D.	8,141.6	5,359.9	1,643.0	23.5	7,002.9	86.0
Total	253,393.5	11,983.5	72,116.9	85.8	84,100.4	33.2

(a) No report was received from agency, assumed no agricultural use.
(b) Included in City of San Diego

Table 11
AUTHORITY STORAGE IN SAN VICENTE RESERVOIR
(Fiscal Year 1965-66)

Member Agencies	Total Quantity in Storage 7/1/65 (acre feet)	Placed into Storage during Fiscal Year (acre feet)	Withdrawn During Fiscal Year		Total Quantity in Storage 6/30/66 (acre feet)
			By Delivery (acre feet)	By Evaporation (acre feet)	
Bueno Colorado M. W. D.	1,870.5	0	0	105.6	1,764.9
Carlsbad M. W. D.	0	0	0	0	0
Del Mar, City of	0	0	0	0	0
Escondido, City of	684.5	0	0	35.5	649.0
Fallbrook Public Utility District	609.0	0	0	34.3	574.7
Helix Irrigation District	0	0	0	0	0
National City & South Bay I. D.	0	0	0	0	0
Oceanside, City of	751.1	0	0	42.4	708.7
Olivenhalm M. W. D.	300.0	116.8	0	16.8	400.0
Otay M. W. D.	1,865.2	0	824.2	76.5	964.5
Poway M. W. D.	2,484.5	1,047.2	391.9	139.8	3,000.0
Rainbow M. W. D.	5,000.0	3,064.3	2,822.1	242.2	5,000.0
Ramona M. W. D.	197.1	296.5	185.6	10.0	298.0
Rincon del Diabolo M. W. D.	4,700.3	403.5	4,605.4	98.4	400.0
Rio San Diego M. W. D.	2,363.4	0	815.3	100.9	1,447.2
San Diego, City of	0	0	0	0	0
San Dieguito Irrigation District	0	0	0	0	0
Santa Fe Irrigation District	0	0	0	0	0
Valley Center M. W. D.	5,000.0	2,816.3	0	316.3	7,500.0
Yulma M. W. D.	465.2	0	0	26.4	438.8
Total	26,290.8	7,744.6	9,044.5	1,248.1	23,142.8

Table 12
CHEMICAL CHARACTER OF NATURAL COLORADO RIVER WATER
AT WEST PORTAL OF SAN JACINTO TUNNEL

Year Ending June 30, 1966

Samples Taken at Entrance to San Diego Aqueduct by M. W. D.
and Analyzed by District Laboratory

Month	Total Hardness as P. P. M. CaCO ₃	Non Carbonate Hardness as P. P. M. CaCO ₃		Alkalinity as P. P. M. CaCO ₃		Magnesium as P. P. M. of Mg.	Hydrogen Ion Concentration	Temperature when sampled °F
		Total	Phenolphthalein	Total	Phenolphthalein			
July	373	254	0	119	0	32.0	8.3	62
August	369	261	1	108	1	32.0	8.3	81
September	368	250	118	118	1	33.0	8.3	79
October	372	254	118	118	1	33.5	8.3	74
November	375	257	118	118	0	33.5	8.3	69
December	366	243	123	123	0	31.5	8.1	60
January	334	213	121	121	1	29.0	8.3	54
February	352	221	131	131	1	31.5	8.4	55
March	375	243	132	132	1	33.0	8.4	51
April	374	242	132	132	1	32.0	8.3	65
May	372	246	126	126	0	33.5	8.3	72
June	366	244	122	122	1	32.0	8.2	75
Average	366	244	122	122	1	32.0	8.3	66
Maximum	375	261	132	132	1	33.5	8.4	82
Minimum	334	213	109	109	0	29.0	8.1	51

Table 13
ALLOCATION OF RIGHT TO PURCHASE AUTHORITY WATER

As of June 30, 1966

Member Agencies	Total Amount Paid by Each Member Agency to 6/30/66	Amount Remaining to be paid under Terms of Annexation	Total Contributions Paid and Contracted for	Allocation	
				Percentage of Authority Supply	Equivalent Flow c. f. a.
Bueno Colorado M. W. D.	\$ 588,063.51	\$ 0.00	\$ 588,063.51	2.78	12.51
Carlsbad M. W. D.	414,268.62	0.00	414,268.62	1.96	8.82
Del Mar, City of	74,050.57	90,140.10	164,190.67	0.78	3.51
Escondido, City of	344,969.48	2,339.67	347,309.15	1.64	7.35
Fallbrook Public Utility District	169,156.28	4,424.08	173,580.36	0.82	3.69
Helix Irrigation District	2,325,427.79	0.00	2,325,427.79	11.01	49.54
National City, City of	515,866.65	0.00	515,866.65	2.44	10.98
Oceanside, City of	519,369.69	0.00	519,369.69	2.43	10.94
Olivenhain M. W. D.	25,555.02	19,140.46	44,695.48	0.21	0.95
Oray M. W. D.	210,143.44	7,903.49	218,046.93	1.03	4.64
Poway M. W. D.	118,738.02	1,283.77	120,021.79	0.57	2.56
Rainbow M. W. D.	104,199.41	1,268.42	105,467.83	0.50	2.25
Ranoma M. W. D.	109,136.86	2,462.17	111,599.03	0.53	2.38
Rincon del Diablo M. W. D.	314,371.08	0.00	314,371.08	1.49	6.70
Rio San Diego M. W. D.	378,882.45	35,136.81	414,019.26	1.96	8.82
San Diego, City of	12,888,142.48	35,136.81	12,868,142.48	61.00	274.50
San Diego Irrigation District	265,969.29	5,845.17	269,204.46	1.27	5.72
Santa Fe Irrigation District	236,076.57	0.00	236,076.57	1.12	5.04
South Bay Irrigation District	1,225,334.34	0.00	1,225,334.34	5.80	26.10
Valley Center M. W. D.	90,421.52	1,872.36	92,294.08	0.44	1.98
Yelma M. W. D.	14,532.05	31,896.50	46,448.55	0.22	0.99
Total Authority	\$ 20,926,665.12	\$ 201,073.20	\$ 21,127,755.32	100.00	450.00

Table 14
WATER SALES BY METROPOLITAN WATER DISTRICT
Fiscal Years 1941-42 to 1965-66

Year	To Member Municipalities						Total Acre feet
	Natural Water		Treated Water		Total to Agencies	To Others	
	Acre feet	Per cent	Acre feet	Per cent	Acre feet	Acre feet	
1941-42	0	0	9,372.6	100	9,372.6	70.7	9,443.3
1942-43	0	0	14,457.8	100	14,457.8	2,626.4	17,084.2
1943-44	0	0	15,874.9	100	15,874.9	3,301.8	19,176.7
1944-45	0	0	30,591.3	100	30,591.3	1,715.7	32,307.0
1945-46	0	0	46,685.8	100	46,685.8	1,264.2	47,950.0
1946-47	0	0	59,861.8	100	59,861.8	524.0	60,385.8
1947-48	41,003.5	36	71,995.4	64	113,088.9	116.8	113,255.7
1948-49	71,642.6	49	73,237.1	51	144,879.7	128.4	145,008.1
1949-50	69,308.0	49	72,936.0	51	142,244.0	23,371.6	165,615.6
1950-51	75,000.9	54	63,493.1	46	138,494.0	26,978.6	165,472.6
1951-52	66,674.3	44	84,616.1	56	151,290.4	42,464.2	193,754.6
1952-53	30,845.3	24	99,589.6	76	130,434.9	31,682.4	162,117.3
1953-54	120,773.0	51	115,550.6	49	236,323.6	7,820.7	244,144.3
1954-55	192,544.7	59	134,923.3	41	327,468.0	58,184.5	385,652.5
1955-56	190,337.2	53	169,506.4	47	359,843.6	45,562.9	405,406.5
1956-57	286,050.1	60	191,110.7	40	477,160.8	66,074.1	543,234.9
1957-58	266,034.1	57	197,900.0	43	463,934.1	75,612.8	539,546.9
1958-59	244,354.2	46	282,248.1	54	526,602.3	74,107.1	600,709.4
1959-60	425,019.0	58	304,874.8	42	729,893.8	3,523.2	733,417.0
1960-61	594,521.1	64	335,207.2	36	929,728.3	4,099.4	933,827.7
1961-62	608,811.0	66	312,975.9	34	921,786.9	3,676.9	925,463.8
1962-63	668,881.8	66	348,092.6	34	1,016,974.4	3,677.0	1,020,651.4
1963-64	671,853.4	63	388,553.9	37	1,060,407.3	3,776.7	1,064,184.0
1964-65	645,577.3	58	471,042.0	42	1,116,619.3	5,035.3	1,121,654.6
1965-66	550,630.8	52	503,424.9	48	1,054,055.7	4,821.8	1,058,877.5

Table 15
WATER PRODUCTION - METROPOLITAN WATER DISTRICT CONSTITUENT AREAS
Figures Furnished by Metropolitan Water District

Constituent Areas	Total Water Production			Source of Water Produced - 1965-66			
	1965-66		Percent Increase or Decrease	M. W. D.		Other	
	Amount ac. ft.	1964-65 Amount ac. ft.		Amount ac. ft.	Percent of Total		
Anheim	33,821	35,943	6.3	14,345	40	21,598	60
Beverly Hills	12,134	12,661	4.3	6,066	48	6,575	52
Burbank	25,071	25,375	2.0	6,737	26	18,638	74
Calleguas M. W. D.	64,623	71,004	9.9	18,486	26	52,518	74
Central Basin M. W. D.	213,009	213,373	0.2	46,211	22	167,162	78
Chino Basin M. W. D.	188,367	185,005	3.5	13,422	93	181,583	7
Coastal M. W. D.	23,970	23,915	- 0.2	22,782	95	1,133	5
Compton	7,531	8,205	4.8	1,588	19	6,617	81
Eastern M. W. D.	115,081	119,171	3.6	33,477	28	85,694	72
Foothill M. W. D.	15,176	15,376	0.7	8,092	53	7,184	47
Fullerton	20,337	20,625	1.4	10,186	49	10,429	51
Glendale	22,631	22,925	1.3	2,435	11	20,490	89
Las Virgenes M. W. D.	1,674	2,432	45.3	2,335	96	97	4
Long Beach	35,500	37,978	4.5	31,377	54	26,601	46
Los Angeles	520,976	527,642	1.3	82,770	16	444,872	84
Orange County M. W. D.	219,609	213,702	- 2.7	58,702	27	155,000	73
Pasadena	33,343	33,560	0.7	13,846	41	19,714	59
Pomona Valley M. W. D.	56,819	62,925	10.7	14,003	22	48,922	78
San Diego C. W. A.	243,893	238,720	6.1	223,968	87	34,732	13
San Marino	4,974	4,748	- 4.6	3	0	4,745	100
Santa Ana	20,853	22,029	5.5	4,299	20	17,730	80
Santa Monica	14,911	15,558	4.3	11,100	71	4,458	29
Torrance	19,631	20,506	4.5	18,748	91	1,758	9
Upper San Gabriel Valley M. W. D.	125,179	130,113	3.9	0	0	130,113	100
West Basin M. W. D.	143,455	150,038	4.6	0	0	150,038	100
Western M. W. D.	215,896	223,462	3.5	31,462	14	182,000	86
Totals	2,418,894	2,487,091	2.8	777,455	31	1,709,636	69

Notes: (a) Includes 4,385 acre-feet of seepage into San Jacinto Tunnel.
 (b) Does not include 102,708 acre-feet of untreated water delivered to Central Basin for replenishment purposes within the Central and West Basin Water Replenishment District, and also does not include 3,718 acre-feet of treated water used for barrier injection.
 (c) Does not include 116,462 acre-feet of untreated water delivered for replenishment purposes, and also does not include 357 acre-feet of treated water used for barrier injection.
 (d) 21,500 acre-feet were delivered for replenishment purposes.
 (e) Does not include 44,311 acre-feet used for barrier injection.

Table 16

ANALYSIS OF COLORADO RIVER AQUEDUCT WATER
TAKEN AT WEST PORTAL OF SAN JACINTO TUNNEL
For year Ending June 30, 1966

Constituent	Symbol	Average	ANALYSIS	
			Maximum	Minimum
Silica	SiO ₂	9.5 ppm	10.6 ppm	8.0 ppm
Iron	Fe	-	-	86.0 "
Calcium	Ca	94.0 "	97.0 "	29.0 "
Magnesium	Mg	32.0 "	33.5 "	112.0 "
Sodium	Na	115.0 "	120.0 "	5.0 "
Potassium	K	6.0 "	6.0 "	0.0 "
Carbonate	CO ₃	0.0 "	1.0 "	132.0 "
Bicarbonate	HCO ₃	150.0 "	161.0 "	297.0 "
Sulfate	SO ₄	331.0 "	344.0 "	98.0 "
Chloride	Cl	112.0 "	120.0 "	0 "
Nitrate	NO ₃	1.3 "	1.8 "	0.4 "
Fluoride	F	0.5 "	0.5 "	705.0 "
Total Dissolved Solids		776.0 "	797.0 "	
Hardness as CaCO ₃				
Total		366.0 "	375.0 "	334.0 "
Carbonate		122.0 "	132.0 "	104.0 "
Noncarbonate		244.0 "	261.0 "	213.0 "
Alkalinity - Phenolphthalein		0.0 "	1.0 "	0.0 "
Alkalinity - Total		122.0 "	132.0 "	104.0 "
Free Carbon Dioxide	CO ₂	1.0 "	1.0 "	0.0 "
Hydrogen Ion Concentration	pH	8.3	8.4	8.1
Electrical Conductivity	EC _{at 25°C}	1,225.0	1,300.0	1,150.0

Table 17
ASSESSED VALUATIONS AND TAX RATES OF THE
METROPOLITAN WATER DISTRICT OF SOUTHERN CALIFORNIA

Fiscal Year	Area (acres)	Assessed Valuation Total (1)	Tax Rate	
			Per \$100 Secured	Per \$100 Unsecured
1929-30	-	\$ 2,439,836,920	\$0.04	\$0.00
1930-31	-	2,431,684,250	.03	.04
1931-32	-	2,382,184,445	.03	.03
1932-33	-	1,936,051,180	.04	.03
1933-34	-	1,654,403,890	.04	.04
1934-35	-	1,587,147,565	.10	.04
1935-36	-	1,783,531,020	.20	.10
1936-37	-	1,789,160,685	.37	.20
1937-38	-	1,827,765,725	.40	.37
1938-39	-	1,896,966,255	.40	.40
1939-40	-	1,910,152,190	.42	.40
1940-41	389,588	1,841,248,450	.49	.42
1941-42	399,875	1,900,599,934	.48	.49
1942-43	400,614	2,001,924,735	.48	.48
1943-44	401,190	2,005,496,430	.48	.48
1944-45	401,536	2,109,192,796	.48	.48
1945-46	402,779	2,159,731,425	.50	.48
1946-47	501,425	2,413,186,570	.48	.50
1947-48	546,573	3,443,212,822 (2)	.35	.48
1948-49	578,368	3,883,081,225	.34	.35
1949-50	585,184	4,181,812,855	.34	.34
1950-51	721,850	4,281,519,725	.31	.34
1951-52	995,130	4,674,664,040	.30	.31
1952-53	1,120,448	5,372,498,515	.28	.30
1953-54	1,368,038	6,015,691,980	.25	.28
1954-55	1,793,651	6,548,392,114	.23	.25
1955-56	1,876,256	8,514,868,335	.21	.23
1956-57	1,932,206	9,674,000,560	.19	.21
1957-58	2,046,189	11,235,906,510	.18	.19
1958-59	2,128,333	12,070,838,070	.18	.18
1959-60	2,171,290	12,714,205,470	.17	.18
1960-61	2,544,960	13,737,971,925	.16	.17
1961-62	2,647,014	14,800,202,587	.15	.16
1962-63	2,797,946	15,699,681,030	.14	.15
1963-64	2,825,306	17,261,412,395	.14	.14
1964-65	2,882,144	17,757,246,740	.14	.14
1965-66	2,890,266	19,143,157,788	.14	.14
1966-67 (1)	-	20,979,150,165	.14	.14

(1) Includes secured, unsecured, and public utility valuations.

(2) First year in which Authority assessed valuation was included in district's assessed valuation.

(3) Data for 1966-67 were available before completion of report and are included for convenience of reader.

Mr. Linden R. Barzell
 General Manager and Chief Engineer
 San Diego County Water Authority
 2750 Fourth Avenue
 San Diego, California 92103

Dear Sir:

Presented herewith is the annual financial report of the San Diego County Water Authority for the fiscal year ended June 30, 1966.

Following is a description of the functions, restrictions and uses of each of the San Diego County Water Authority funds. Also included is a brief analysis of the surplus or reserve balances of each of the funds. Cash in excess of current needs is invested in accordance with sound fiscal policies.

General Fund:

This fund was created to be available for the financing of current operations, maintenance, and the purchase of water from the Metropolitan Water District. The principal revenue of the fund is from a surcharge of \$1.25 per acre foot paid by each agency over the cost of the water purchased from the Metropolitan Water District.

For many years, the surcharge was \$2.00 per acre foot. Effective September 1, 1964, the surcharge was reduced to \$1.25 per acre foot which has been adequate to meet all general fund expenses.

The general fund at June 30, 1966 had a balance of \$859,062 as shown on Exhibit B and consisted of reserve for water in storage of \$563,940; miscellaneous supplies of \$2,084; petty cash \$300; continuing appropriations of \$108,530 and unappropriated surplus of \$184,208.

Reserve Fund:

This fund was established as a permanent revolving fund in an amount not to exceed \$900,000. The fund is required to provide resources pending the collection of taxes. The resources of the fund may be used for the following purposes:

1. Payment of current debt service requirements and expenses of the Authority, if required.
2. Payment of water purchases prior to collection of the charges for water delivered to our member agencies.
3. Immediate repairs to, or reconstruction of, any part of the Authority system in the event of damage or partial destruction thereto from unpredictable causes, which interrupt or threaten to interrupt the continuous flow of water to the member agencies of the Authority.

The reserve fund appropriated surplus balance at June 30, 1966 follows:

Available for future authorized purposes	\$ 710,484
Continuing appropriations	141,159
	<u>\$ 851,643</u>

The comment section of this report shows an example of the approximate debt service requirements for the period July through December.

Capital Improvement Fund:

This fund was established in 1952 to receive all moneys resulting from the terms and conditions for the annexation of any area to the Authority including special taxes, receipts in lieu of special taxes and cash remittances. The resources of this fund are available for the construction of capital improvements to the Authority system and for the purpose of meeting obligations as a result of the terms and conditions of annexation. The resources of this fund are not available for operations and maintenance nor are they to be considered for the purpose of any tax levy in determining budgetary requirements.

The capital improvement fund appropriated surplus balances at June 30, 1966 follows:

Available for future authorized purposes	\$ 594,484
Continuing appropriations	<u>5,852</u>
Subtotal immediately available	\$600,336
Reserve for annexation charges receivable	<u>266,925</u>
	<u>\$867,261</u>

As of June 30, 1966, the resources of this fund included annexation charges which are to be paid by the member agencies in varying amounts over a ten-year period. Because a portion of the fund is represented by a receivable, only \$600,336 of the appropriated surplus balance is immediately available.

Waterworks Bonds, 1947, Interest and Sinking Fund:

This fund is used to service the \$2,000,000 bond issue authorized and sold in 1947. Revenues are derived from taxes and interest earnings. In order to comply with the County Water Authority Act, a sinking fund reserve was established. As of June 30, 1966, the reserve for debt redemption of this issue amounted to \$217,177. Of this amount, \$202,210 represents the portion available for the sinking fund reserve and has been accumulated in accordance with the objectives of this fund. The balance of \$14,967 is the amount in excess of the current year's needs and will be applied towards the requirements of the coming year.

U. S. Government Contract Fund:

This fund was established to service the debt to the U. S. Government for construction of the First and Second Barrels of the San Diego Aqueduct acquired by Lease and Purchase Contract No. 13360.

Fund revenues include tax collections and receipts from the Metropolitan Water District for its share of construction costs pursuant to the purchase agreement for the northerly section of the aqueduct within San Diego County.

The reserve for debt redemption amounts to \$8,891,749. This balance is represented by the long-term receivable (payable in installments) from the Metropolitan Water District of \$8,883,072 and immediately available resources of \$8,677.

Waterworks Bonds, 1957, Improvement Fund:

This fund was established to receive all moneys obtained through the sale of the 1957 series of waterworks bonds. As of June 30, 1966, the appropriated surplus balance consisted of the following:

Available for future authorized purposes	\$ 2,487,567
Continuing appropriations	<u>49,789</u>
	<u>\$ 2,537,356</u>

The resources of this fund may be used for improvement to the Authority system as authorized by the bond election. Current and proposed projects relate to construction of the Second Barrel of the Second Aqueduct for which preliminary studies are now being made.

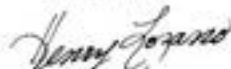
Waterworks Bonds, 1957, Interest and Redemption Fund:

This fund was established to provide moneys to redeem the 1957 waterworks bond issue. Revenues of the fund result primarily from taxes. As of June 30, 1966, the reserve for debt redemption amounts to \$9,357.

As always, every effort has been made to present the Authority's financial position clearly and comprehensively. The accounts are maintained on the modified accrual basis, that is, in general, revenues are recorded when earned and expenditures are recorded upon incurrence of liability, except accrued interest on outstanding debt, which is payable from appropriations of the following year.

It is hoped that the above will aid those that wish to analyze the Authority's financial position and activities for the fiscal year 1965-66.

Respectfully,



Henry G. Lozano
Chief Accounting Officer

PEAT, MARWICK, MITCHELL & CO.

CERTIFIED PUBLIC ACCOUNTANTS
(INCORPORATING EVERTS AND ESENOFF)
1850 FIFTH AVENUE
SAN DIEGO, CALIFORNIA 92101

The Board of Directors
San Diego County Water Authority:

We have examined the financial statements of the San Diego County Water Authority as of and for the year ended June 30, 1966 as listed under exhibits and schedules in the Index of Tables, Appendix B - Financial Report. Our examination was made in accordance with generally accepted auditing standards, and accordingly included such tests of the accounting records and such other auditing procedures as we considered necessary in the circumstances.

The financial statements included in this report were prepared from accounting records kept on a modified accrual basis. In general, revenues are recorded when earned and expenditures are recorded upon incurrence of liability, except accrued interest on outstanding indebtedness, which is payable from appropriations of the following year.

In our opinion, such financial statements present fairly the financial position of the San Diego County Water Authority at June 30, 1966 and the results of its operations for the year then ended, in conformity with generally accepted accounting principles applied on a basis consistent with that of the preceding year.

Peat, Marwick, Mitchell & Co.

September 30, 1966

SAN DIEGO COUNTY WATER AUTHORITY

Exhibit A

BALANCE SHEET

June 30, 1966

With comparative figures for 1965

ASSETS	1966	1965
CURRENT ASSETS - GENERAL FUND:		
Cash with treasurer	\$ 850,188.96	198,260.24
Petty cash	300.00	200.00
Accounts receivable	855,048.76	675,261.50
Inventory of water in storage, at cost (first-in, first-out)	563,940.00	573,352.70
Inventory of materials and supplies	2,083.67	5,364.28
Investments, at cost (Schedule 5)	132,331.92	90,060.00
Total current assets - general fund	<u>2,403,893.31</u>	<u>1,542,498.72</u>
SPECIAL FUND ASSETS (note 1):		
Reserve fund:		
Cash with treasurer	751,713.81	742,338.48
Investments, at cost (Schedule 5)	99,940.00	99,940.00
Total reserve fund	<u>851,653.81</u>	<u>842,278.48</u>
Capital improvement fund:		
Cash with treasurer	606,274.38	559,423.00
Annexation charges receivable - not due	201,073.20	234,463.75
Total capital improvement fund	<u>807,347.58</u>	<u>793,886.75</u>
Waterworks bonds, 1947, interest and sinking fund:		
Cash with treasurer	180,677.23	261,909.88
Cash with fiscal agent	5,500.00	7,000.00
Investments, at cost (Schedule 5)	31,000.00	-
Total waterworks bonds, 1947, interest and sinking fund	<u>217,177.23</u>	<u>268,909.88</u>
U. S. Government contract fund:		
Cash with treasurer	8,677.09	9,525.67
Due from Metropolitan Water District (note 2)	8,883,072.18	9,339,874.70
Total U. S. Government contract fund	<u>8,891,749.27</u>	<u>9,349,400.37</u>
Waterworks bonds, 1957, improvement fund:		
Cash with treasurer	2,539,269.44	2,828,531.95
Waterworks bonds, 1957, interest and redemption fund:		
Cash with treasurer	1,194.36	78,182.01
Cash with fiscal agent	8,163.25	10,971.25
Total waterworks bonds, 1957, interest and redemption fund	<u>9,357.61</u>	<u>89,153.26</u>
PROPERTY, PLANT, EQUIPMENT AND PARTICIPATION RIGHTS, AT COST (note 3):		
Property, plant and equipment	55,548,597.40	52,307,516.30
Less accumulated depreciation	4,832,933.53	4,309,448.11
Net property, plant and equipment (Schedule 7)	50,715,663.87	47,998,068.19
Construction work in progress	81,481.83	3,029,268.74
Participation rights in Metropolitan Water District	55,649,233.87	53,025,580.58
Net property, plant, equipment and participation rights	<u>106,446,379.57</u>	<u>104,052,917.51</u>
	<u>\$ 122,166,827.82</u>	<u>119,767,576.92</u>

FINANCIAL REPORT

Exhibit A

BALANCE SHEET

LIABILITIES, RESERVES AND SURPLUS

	1966	1965
CURRENT LIABILITIES - GENERAL FUND:		
Accounts payable	\$ 1,468,198.78	577,906.70
Unapplied credits for irrigation water	63,145.95	59,173.18
Advances by agencies for construction	10,428.00	31,022.03
Deposits by agencies for annexation	2,500.00	1,000.00
Total current liabilities - general fund	<u>1,544,272.73</u>	<u>669,101.91</u>
CURRENT LIABILITIES - SPECIAL FUNDS:		
Current installments of long-term debt	2,038,304.49	2,089,950.47
Accounts payable	257.27	232,501.35
Total current liabilities - special funds	<u>2,038,561.76</u>	<u>2,322,451.82</u>
LONG-TERM DEBT (note 4):		
General obligation bonds payable - not due	34,465,000.00	34,885,000.00
Estimated balance on U. S. Government contract	16,772,108.52	17,651,138.36
Balance of annexation charges - Metropolitan Water District	10,472,152.91	11,263,073.54
	<u>61,709,261.43</u>	<u>63,799,211.90</u>
Less current installments (above)	<u>2,038,304.49</u>	<u>2,089,950.47</u>
Net long-term debt	<u>59,670,956.94</u>	<u>61,709,261.43</u>
RESERVES AND SURPLUS:		
Net equity in property, plant, equipment and participation rights (note 3)	44,737,118.14	40,253,705.61
Reserve for encumbrances	2,312.37	165.05
Reserves for debt redemption:		
Retirement of general obligation bonds	226,534.84	358,063.14
Retirement of U. S. Government contract	8,891,749.27	9,349,400.37
Total reserves	<u>53,857,714.62</u>	<u>49,961,334.17</u>
Appropriated surplus:		
Petty cash fund balance	300.00	200.00
Reserve fund balance	710,483.57	842,278.48
Waterworks bonds, 1957, improvement fund	2,487,566.82	2,375,057.89
Capital improvement fund	801,409.09	791,089.58
Total appropriated surplus	<u>3,999,759.48</u>	<u>4,008,605.95</u>
Incomplete projects (continuing appropriations):		
General fund	108,530.49	-
Reserve fund	141,159.11	-
Waterworks bonds, 1957, improvement fund	49,788.75	220,827.66
Capital improvement fund	5,852.41	2,797.17
Total incomplete projects	<u>305,330.76</u>	<u>223,624.83</u>
Unappropriated surplus:		
Invested in water in storage	563,940.00	573,352.70
Invested in materials and supplies	2,083.67	5,364.28
Available for appropriation	184,207.86	294,479.83
Total unappropriated surplus	<u>750,231.53</u>	<u>873,196.81</u>
Contingent liabilities and commitments (notes 4 and 5).	<u>\$ 122,166,827.82</u>	<u>119,767,576.92</u>

See accompanying notes to financial statements.

SAN DIEGO COUNTY WATER AUTHORITY

FINANCIAL REPORT

Exhibit B
STATEMENT OF CHANGES IN SURPLUS AND RESERVES
Year ended June 30, 1966

STATEMENT OF CHANGES IN SURPLUS AND RESERVES
Year ended June 30, 1966

	Total	General Fund	Reserve Fund	Waterworks Bonds, 1947 Interest and Sinking Fund	U. S. Government Contract Fund	Waterworks Bonds, 1957 Improvement Fund	Waterworks Bonds, 1957 Interest and Redemption Fund	Capital Improvement Fund	Net Equity in Fixed Assets
Balances, July 1, 1965	\$ 55,066,761.76	873,396.81	843,278.48	268,909.88	9,349,406.37	2,596,000.60	89,153.26	793,896.75	46,253,766.61
Excess of revenue over expense - general fund (Exhibit C)	6,236.38	6,236.38	-	-	-	-	-	-	-
Revenue other than general fund (Schedule 2)	2,865,093.43	-	18,206.69	112,492.28	1,168,991.64	-	1,499,844.22	65,560.20	-
Refund of prior year expenditures	8,419.52	2,868.52	-	-	-	5,971.00	-	-	-
Agencies contributions to Metropolitan Water District:									
Reduction of annexation charges due Metropolitan Water District	796,920.63	-	-	-	-	-	-	-	796,920.63
Participation rights in Metropolitan Water District	2,623,653.29	-	-	-	-	-	-	-	2,623,653.29
Payments on U. S. Government contracts	879,029.84	-	-	-	-	-	-	-	879,029.84
Redemptions of Waterworks bonds	420,000.00	-	-	-	-	-	-	-	420,000.00
Additions to property, plant and equipment:									
Additions, net (Schedule 7)	293,294.19	-	-	-	-	-	-	-	293,294.19
Accumulated depreciation on retirements	11,486.55	-	-	-	-	-	-	-	11,486.55
Total Additions	7,858,533.83	9,084.90	18,206.69	112,492.28	1,168,991.64	5,971.00	1,499,844.22	65,560.20	5,616,384.50
Total beginning balances plus additions	62,925,295.59	882,481.71	861,485.17	381,402.16	10,518,398.01	2,602,001.60	1,588,997.48	859,456.95	45,272,090.11
Expenditures, other than general fund (Schedule 3)	2,996,280.23	-	8,840.89	162,500.00	1,168,402.56	64,646.03	1,573,180.00	18,710.75	-
Tax collection expense	5,398.61	-	-	224.93	1,437.66	-	3,651.87	84.15	-
Decrease in amount due from Metropolitan Water District	456,802.52	-	-	-	456,802.52	-	-	-	-
Annexation charges collected (included in revenues above)	33,390.55	-	-	-	-	-	-	33,390.55	-
Expenditures from general fund for plant and equipment	23,419.69	23,419.69	-	-	-	-	-	-	-
Decrease in special deposit for bond interest	4,398.00	-	-	1,500.00	-	-	2,808.00	-	-
Depreciation expense	534,971.97	-	-	-	-	-	-	-	534,971.97
Total deductions	4,054,571.57	23,419.69	8,840.89	164,224.93	1,636,642.74	64,646.03	1,576,039.87	52,185.45	534,971.97
Balances, June 30, 1966	\$ 58,910,724.02	859,062.02	852,644.28	217,177.23	8,881,749.27	2,537,355.57	9,357.61	807,261.50	44,737,118.14
Analysis of surplus and reserves:									
Net equity in fixed assets	\$ 44,737,118.14	-	-	-	-	-	-	-	44,737,118.14
Reserve for debt redemption	9,118,254.11	-	-	217,177.23	8,881,749.27	-	9,357.61	-	-
Appropriated surplus:									
incomplete projects (continuing appropriations)	300,330.76	108,538.49	141,159.11	-	-	49,788.75	-	5,832.41	-
Other	3,989,759.48	300.00	710,483.57	-	-	2,487,566.82	-	801,409.09	-
Unappropriated surplus	750,231.53	750,231.53	-	-	-	-	-	-	-
	\$ 58,910,724.02	859,062.02	852,644.28	217,177.23	8,881,749.27	2,537,355.57	9,357.61	807,261.50	44,737,118.14
(1) Analysis of unappropriated surplus:									
Invested in water in storage		583,910.00	-						
Invested in materials and supplies		2,083.67	-						
Available for appropriations		164,237.86	-						
		\$ 750,231.53							

See accompanying notes to financial statements.

SAN DIEGO COUNTY WATER AUTHORITY

FINANCIAL REPORT

Exhibit C
STATEMENT OF REVENUE AND EXPENSE - GENERAL FUND
Year ended June 30, 1966
With comparative figures for 1965

	1965	1966
WATER SALES:		
Gross revenue from water sales	6,120,829.89	6,187,345.61
Less irrigation credits	(52,418.82)	(776,388.24)
Net revenue from water sales	<u>5,488,411.07</u>	<u>\$ 5,409,956.77</u>
COST OF WATER SOLD:		
Water in storage, beginning of year	348,672.40	573,352.70
Water purchased	6,040,590.00	5,021,314.78
Less irrigation credits	(6,388,362.40)	(6,498,167.43)
Storage and pumping charges	5,756,843.49	5,717,779.24
Less water in storage, end of year	(326.82)	(1,156.02)
Cost of water sold	<u>5,757,843.09</u>	<u>5,715,945.24</u>
Gross margin from water sales	(269.02)	(695.47)
OTHER OPERATING REVENUE:		
Water transportation	79,599.37	1,006.50
Overhead reimbursement for engineering services for Metropolitan Water District	(654,788.94)	(17,356.47)
Gross operating revenue	<u>304,643.11</u>	<u>272,338.50</u>
OPERATING EXPENSES (Schedule 1)		
Excess (deficit) operating revenue before depreciation	(325,144.74)	(296,538.76)
Depreciation expense	(79,599.37)	(18,220.36)
Excess operating expense and depreciation over revenue	<u>534,779.31</u>	<u>(534,971.97)</u>
NONOPERATING REVENUE:		
Property rentals	1,906.00	1,474.00
Earnings on investments	13,965.70	22,286.30
Sale of surplus items	-	725.00
Miscellaneous revenues, net of refunds	(283.83)	(38.71)
Total nonoperating revenue	<u>15,588.87</u>	<u>24,456.64</u>
PROVISION FOR DEPRECIATION, AN EXPENSE WHICH DID NOT REQUIRE CURRENT CASH OUTLAY	<u>(439,200.07)</u>	<u>(528,735.19)</u>
Net excess revenue over expense to surplus	<u>534,779.31</u>	<u>\$ 534,971.97</u>
Depreciation expense has been shown above for 1965 in order that both years are comparable.	<u>(654,788.94)</u>	<u>6,256.38</u>

See accompanying notes to financial statements.

NOTES TO FINANCIAL STATEMENTS

June 30, 1966

(1) Uncollected taxes receivable are fully reserved and are not included in the accompanying financial statements. The fund analysis of uncollected taxes receivable is as follows:

	1965	1966
Waterworks bonds, 1947, interest and sinking fund	2,868.88	\$ 3,452.45
U. S. Government contract fund	19,623.11	26,881.02
Waterworks bonds, 1957, interest and redemption fund	49,229.91	66,541.51
Capital improvement fund	1,281.64	1,829.52
Total uncollected taxes receivable	<u>73,003.54</u>	<u>\$ 98,714.40</u>

(2) The amount of \$8,883,072.18 due the Authority from Metropolitan Water District, as of June 30, 1966, represents the estimated balance of the District's share of the cost of the first and second barrels of the First San Diego Aqueduct. Upon final settlement, the first barrel is subject to adjustment by the U. S. Government. The current portion of this receivable at June 30, 1966 is \$456,803.00.

(3) Net equity in property, plant, equipment and participation rights is shown as follows:

	1965	1966
Property, plant and equipment:		
Financed by:		
General obligation bonds	31,359,673.32	\$ 31,252,542.51
U. S. Government contract	14,949,858.27	14,949,858.27
Current revenues	5,318,883.21	5,682,822.19
Agencies contributions	679,101.50	682,374.43
	<u>52,307,516.30</u>	55,548,597.40
Less accumulated depreciation	4,209,448.11	4,832,833.52
	<u>47,998,068.19</u>	50,715,663.87
Construction work in progress	3,029,268.74	81,481.83
Participation rights in Metropolitan Water District*	53,025,580.58	55,649,233.87
	<u>104,052,917.51</u>	106,446,379.57
Less Long-term debt:		
General obligation bonds payable - not due	34,885,000.00	\$ 34,465,000.00
Estimated balance on U. S. Government contracts	17,651,138.36	16,772,108.52
Annexation charges due Metropolitan Water District	11,262,073.54	10,472,152.91
	<u>63,798,211.90</u>	61,709,261.43
Net equity in property, plant, equipment and participation rights	<u>40,253,705.61</u>	<u>\$ 44,737,118.14</u>

SAN DIEGO COUNTY WATER AUTHORITY

SAN DIEGO COUNTY WATER AUTHORITY

NOTES TO FINANCIAL STATEMENTS (Continued)

June 30, 1966

NOTES TO FINANCIAL STATEMENTS (Continued)

June 30, 1966

*The recorded value and equity in participation rights in the Metropolitan Water District is as follows:

Total recorded participation rights	\$ 55,649,233.87	53,025,580.58
Less unpaid balance of annexation charges due Metropolitan Water District	<u>10,472,152.91</u>	<u>11,263,073.54</u>
Net equity in participation rights	\$ 45,177,080.96	41,762,507.04

(4) Long-term debt:

(a) General obligation bonds not due:

Schedule 6 presents in detail the outstanding bonded indebtedness. The following analysis presents the current principal maturity at June 30, 1966:

1947 waterworks bonds	\$ 150,000.00
1957 waterworks bonds:	
Series:	
A	50,000.00
B	50,000.00
C	60,000.00
D	50,000.00
E	90,000.00
	<u>300,000.00</u>
Total current portion of general obligation bonds	\$ 450,000.00

(b) Estimated balance due on U. S. Government contracts at June 30, 1966 is \$16,772,108.52. Of this amount \$8,883,072.18 is due to the Authority from Metropolitan Water District.

Balance due on contracts:

	Interest Rate	Principal Balance	Current Portion
First barrel:			
Authority's share	None	\$ 2,837,500.00	250,000.00
Metropolitan Water District's share	None	<u>2,837,500.00</u>	<u>250,000.00</u>
		<u>5,675,000.00</u>	<u>500,000.00</u>
Second barrel:			
Authority's share	2.599%	4,861,536.34	172,227.32
Metropolitan Water District's share	2.599%	<u>5,345,572.18</u>	<u>206,802.52</u>
		<u>10,207,108.52</u>	<u>379,029.84</u>
Total		\$16,772,108.52	879,029.84

The amount payable on the U. S. Government contract relating to the first barrel of the First San Diego Aqueduct is subject to adjustment upon final settlement by the U. S. Government.

(c) The unpaid balance of annexation charges due the Metropolitan Water District at June 30, 1966 is \$10,472,152.91. The current portion of this liability at June 30, 1966 is \$109,231.65.

The total current portion of long-term debt set forth above at June 30, 1966 and June 30, 1965 is \$2,038,304.49 and \$2,089,950.47, respectively.

(5) (a) There are \$20,000,000.00 of unissued bonds in the waterworks bonds, 1966 improvement fund at June 30, 1966. These bonds may be sold at any time for purposes authorized by the general election of June 7, 1966.

(b) On November 13, 1963, the Authority entered into an agreement to sell a branch pipeline to the City of Oceanside. The total price (\$100,000.00) is subject to purchase in annual amounts of \$10,000.00 or more. During the year, the City purchased one-tenth of the pipeline for \$10,000.00 and additional sections will be sold for cash in the future years.

Schedule 1
STATEMENT OF OPERATING EXPENSE
Year ended June 30, 1966
with comparative figures for 1965

	1966	1965
General and Administration:		
Engineering department	\$ 45,544.69	39,454.82
Accounting department	16,778.02	16,158.60
Geographic department	11,947.79	11,455.13
Legal services	12,000.00	12,000.00
Consulting services	3,000.00	-
Overtime	447.56	170.41
Employee retirement - R. F. R. S.	9,494.51	7,333.79
Employee retirement - O. A. S. D. L.	4,946.95	3,882.97
Employee insurance - C. P. S.	2,305.13	1,988.32
Vacation and sick leave	11,061.65	9,658.60
Expense of directors	5,200.11	4,578.22
Expense of staff	2,262.83	2,179.22
Auditing	2,500.00	2,500.00
Utilities and telephone - San Diego	2,218.14	2,129.85
Postage	799.40	679.09
Printing, binding and reproduction	3,323.39	3,772.89
Trust fees and commissions	3,796.59	3,098.85
Insurance	7,236.11	6,705.50
Bonds	1,250.51	203.98
Memberships and subscriptions	1,013.30	836.79
Protection of Colorado River rights	2,540.00	2,639.30
Maintenance of office equipment	995.31	924.93
Maintenance of San Diego office	2,192.39	2,133.26
Contingencies	1,426.41	4,568.98
	<u>150,080.61</u>	<u>140,232.08</u>
Operations:		
System operation	14,429.48	14,520.89
Escondido office expense	2,218.36	1,967.91
Radio repair and upkeep	1,587.98	1,964.21
Office utilities and telephone	1,654.98	1,483.88
Control station utilities	1,052.89	948.72
Miscellaneous salaries	571.55	-
Overtime	1,165.90	1,299.20
	<u>22,679.25</u>	<u>22,084.98</u>
Maintenance:		
Maintenance supervision	5,325.59	5,682.46
Patrolling aqueducts	4,419.17	2,601.16
Pipeline - First Aqueduct	670.96	2,644.17
Pipeline - Second Aqueduct	884.19	506.70
Pipeline - other	725.11	39.77
Tunnels	182.20	1,268.19
Line structures	2,573.42	5,356.37
Control buildings	6,265.72	2,002.98
Buildings and grounds - Escondido	4,402.34	2,794.85
Access roads	6,351.18	3,796.37
Valve greasing and repairs	4,059.22	4,092.45
Meter and controls	2,186.76	815.45
Chlorination of aqueducts	41,272.21	43,834.34
Chlorination station, power	3,125.25	-
Chlorine equipment, maintenance	6,334.19	-
Chlorine station, building maintenance	2,351.50	-
Auto and truck - operation and maintenance	7,644.83	7,107.65
Construction equipment - operation and maintenance	2,803.07	565.56
Small tools and equipment	728.14	327.14
Miscellaneous operation of shop	1,164.52	2,189.24
Miscellaneous supplies	1,216.45	-
Miscellaneous salaries	7,530.88	-
Overtime	964.42	615.18
	<u>113,046.39</u>	<u>84,256.93</u>
Other expenses:		
Public information	16,063.96	-
Economic impact study	18,509.72	-
Engineering study of reservoir sites	290.83	-
Bond election expense	9,249.05	-
	<u>44,118.56</u>	<u>-</u>
Total operating expense before charges to other appropriations	<u>335,229.61</u>	<u>246,534.87</u>
Less charges to other appropriations	<u>44,670.85</u>	<u>21,902.13</u>
Total operating expense (Exhibit B)	<u>\$ 290,558.76</u>	<u>\$ 224,632.74</u>

See accompanying notes to financial statements.

FINANCIAL REPORT

Schedule 2
STATEMENT OF REVENUE - ESTIMATED AND ACTUAL

Year ended June 30, 1966

Source	Estimated Revenue	Actual Revenue	Actual Over Or (Under) Estimate
Taxes, secured, current levy	\$ 1,852,564.62	1,864,067.94	11,503.32
Taxes, unsecured, current levy	170,958.94	168,827.22	(2,131.72)
Taxes, secured, prior years' levies	32,820.00	43,146.15	10,326.15
Taxes, unsecured, prior years' levies	1,730.00	1,256.56	(473.44)
Penalties on delinquent taxes	3,450.00	4,926.87	1,476.87
Receipts in lieu of taxes	----	333.80	333.80
Sale of water	6,330,000.00	5,408,966.77	(921,033.23)
Miscellaneous tax sales	----	157.81	157.81
Earnings on investments	180,000.00	179,467.53	(532.47)
Proceeds from sale of pipeline (note 5)	10,000.00	10,000.00	----
Rentals	1,900.00	1,474.00	(426.00)
Contract payments from Metropolitan Water District	614,600.00	614,687.19	87.19
Use of Authority facilities	600.00	1,036.50	436.50
Sale of surplus items	----	725.00	725.00
Engineering services for Metropolitan Water District - overhead reimbursement	----	17,350.47	17,350.47
Miscellaneous revenues	----	480.00	480.00
Totals	<u>\$ 9,198,623.56</u>	<u>8,316,893.81</u>	<u>(881,729.75)</u>
Distribution by Funds			
General fund	6,341,500.00	5,451,800.38	(889,699.62)
Other funds:			
Reserve fund	35,000.00	18,205.09	(16,794.91)
Waterworks bonds, 1947, interest and sinking fund	103,079.02	112,482.28	9,413.26
U. S. Government contract fund	1,163,481.32	1,168,891.64	5,510.32
Waterworks bonds, 1957, interest and redemption fund	1,504,672.67	1,499,844.22	(4,828.45)
Capital improvement fund	50,890.55	65,560.20	14,669.65
Total other funds	<u>2,857,123.56</u>	<u>2,865,093.43</u>	<u>7,969.87</u>
Totals	<u>\$ 9,198,623.56</u>	<u>8,316,893.81</u>	<u>(881,729.75)</u>

See accompanying notes to financial statements.

SAN DIEGO COUNTY WATER AUTHORITY

Schedule 3

STATEMENT OF APPROPRIATIONS AND EXPENDITURES

Year ended June 30, 1966

Estimate and Authority Number	Purpose	Prior Years' Appropriation Carried Over	Appropriations 1965-66	Expenditures 1965-66	Cancelled Appropriations	Unexpended Appropriations June 30, 1966	Uncumbered Balance
238	Construction of cross connection	\$ 217,720.89	---	49,585.54	153,135.35	15,000.00	15,000.00
250	Engineering report on sizing and timing of second barrel of Second San Diego Aqueduct	3,271.82	---	(1,650.76)	4,922.58	---	---
254	Service connection, Valley Center Station 1367-57	28,076.14	---	27,273.91	---	802.23	802.23
255	Installation of automatic equipment at Valley Center No. 1 service connection	2,945.89	---	---	---	---	---
256	Rio San Diego interconnection with San Diego County Water Authority, Station 259-00	2,797.17	---	2,218.82	527.07	---	---
-	Budget fiscal year 1965-66:			20.56	---	2,776.61	2,776.61
	General fund	---	6,436,100.00	5,415,152.43	1,020,947.57	---	---
	U. S. Government contract fund	---	1,168,403.00	1,168,402.56	.44	---	---
	Waterworks bonds, 1947, interest and sinking fund	---	162,500.00	162,500.00	---	---	---
	Waterworks bonds, 1957, interest and redemption fund	---	1,573,180.00	1,573,180.00	---	---	---
257	Service connection, No. 2, Escondido Station 1075 38:						
	City of Escondido	---	19,900.00	10,274.23	---	9,625.77	9,625.77
	Authority	---	11,600.00	8,524.20	---	3,075.80	3,075.80
258	Engineering services for Metropolitan Water District Less reimbursements	---	93,500.00	134,878.12	---	---	---
259	Preliminary engineering, second barrel of Second San Diego Aqueduct	---	35,000.00	(134,878.12)	---	93,500.00	93,500.00
260	Four telemetering instruments, Second San Diego Aqueduct	---	16,500.00	3,572.90	---	31,427.10	31,427.10
261	Legal action against certain pipe companies for conspiracy and price fixing	---	150,000.00	13,138.35	---	3,361.65	3,361.65
262	Additions to San Diego No. 4 service connection	---	150,000.00	8,840.89	---	141,159.11	141,159.11
263	Public information	---	10,500.00	10,165.99	334.01	---	---
264	Report of San Diego County Water Authority economic impact	---	19,400.00	16,063.96	---	3,336.04	3,336.04
265	Engineering study of reservoir sites	---	23,000.00	18,509.72	---	4,490.28	4,490.28
266	Bond election, June 7, 1966	---	7,500.00	295.83	---	7,204.17	7,204.17
		---	15,000.00	9,549.05	5,450.95	---	---
	Less advances by agencies	254,811.91	9,742,053.00	8,486,618.18	1,180,517.97	315,758.76	315,758.76
		31,022.03	19,900.00	39,766.96	727.07	10,428.60	10,428.60
	Total Authority	\$ 223,789.88	9,722,183.00	8,455,851.22	1,184,790.90	305,330.76	305,330.76
<u>Distribution by Funds</u>							
	General fund	---	6,594,500.00	5,459,570.99	1,026,398.52	108,530.49	108,530.49
	Other funds:						
	Reserve fund	---	150,000.00	8,840.89	---	141,159.11	141,159.11
	Waterworks bonds, 1947, interest and sinking fund	---	162,500.00	162,500.00	---	---	---
	U. S. Government contract fund	---	1,168,403.00	1,168,402.56	.44	---	---
	Waterworks bonds, 1957, improvement fund	220,992.71	51,500.00	64,646.03	158,057.93	49,788.75	49,788.75
	Waterworks bonds, 1957, interest and redemption fund	---	1,573,180.00	1,573,180.00	---	---	---
	Capital improvement fund	2,797.17	22,109.00	18,710.75	334.01	5,852.41	5,852.41
	Total other funds	223,789.88	3,127,683.00	2,996,280.23	158,392.38	196,800.27	196,800.27
	Total	\$ 223,789.88	9,722,183.00	8,455,851.22	1,184,790.90	305,330.76	305,330.76

See accompanying notes to financial statements.

FINANCIAL REPORT

Schedule 3

STATEMENT OF APPROPRIATIONS AND EXPENDITURES

Year ended June 30, 1966

Estimate and Authority Number	Purpose	Prior Years' Appropriation Carried Over	Appropriations 1965-66	Expenditures 1965-66	Cancelled Appropriations	Unexpended Appropriations June 30, 1966	Uncumbered Balance
238	Construction of cross connection	\$ 217,720.89	---	49,585.54	153,135.35	15,000.00	15,000.00
250	Engineering report on sizing and timing of second barrel of Second San Diego Aqueduct	3,271.82	---	(1,650.76)	4,922.58	---	---
254	Service connection, Valley Center Station 1367-57	28,076.14	---	27,273.91	---	802.23	802.23
255	Installation of automatic equipment at Valley Center No. 1 service connection	2,945.89	---	---	---	---	---
256	Rio San Diego interconnection with San Diego County Water Authority, Station 259-00	2,797.17	---	2,218.82	527.07	---	---
-	Budget fiscal year 1965-66:			20.56	---	2,776.61	2,776.61
	General fund	---	6,436,100.00	5,415,152.43	1,020,947.57	---	---
	U. S. Government contract fund	---	1,168,403.00	1,168,402.56	.44	---	---
	Waterworks bonds, 1947, interest and sinking fund	---	162,500.00	162,500.00	---	---	---
	Waterworks bonds, 1957, interest and redemption fund	---	1,573,180.00	1,573,180.00	---	---	---
257	Service connection, No. 2, Escondido Station 1075 38:						
	City of Escondido	---	19,900.00	10,274.23	---	9,625.77	9,625.77
	Authority	---	11,600.00	8,524.20	---	3,075.80	3,075.80
258	Engineering services for Metropolitan Water District Less reimbursements	---	93,500.00	134,878.12	---	---	---
259	Preliminary engineering, second barrel of Second San Diego Aqueduct	---	35,000.00	(134,878.12)	---	93,500.00	93,500.00
260	Four telemetering instruments, Second San Diego Aqueduct	---	16,500.00	3,572.90	---	31,427.10	31,427.10
261	Legal action against certain pipe companies for conspiracy and price fixing	---	150,000.00	13,138.35	---	3,361.65	3,361.65
262	Additions to San Diego No. 4 service connection	---	150,000.00	8,840.89	---	141,159.11	141,159.11
263	Public information	---	10,500.00	10,165.99	334.01	---	---
264	Report of San Diego County Water Authority economic impact	---	19,400.00	16,063.96	---	3,336.04	3,336.04
265	Engineering study of reservoir sites	---	23,000.00	18,509.72	---	4,490.28	4,490.28
266	Bond election, June 7, 1966	---	7,500.00	295.83	---	7,204.17	7,204.17
		---	15,000.00	9,549.05	5,450.95	---	---
	Less advances by agencies	254,811.91	9,742,053.00	8,486,618.18	1,180,517.97	315,758.76	315,758.76
		31,022.03	19,900.00	39,766.96	727.07	10,428.60	10,428.60
	Total Authority	\$ 223,789.88	9,722,183.00	8,455,851.22	1,184,790.90	305,330.76	305,330.76
<u>Distribution by Funds</u>							
	General fund	---	6,594,500.00	5,459,570.99	1,026,398.52	108,530.49	108,530.49
	Other funds:						
	Reserve fund	---	150,000.00	8,840.89	---	141,159.11	141,159.11
	Waterworks bonds, 1947, interest and sinking fund	---	162,500.00	162,500.00	---	---	---
	U. S. Government contract fund	---	1,168,403.00	1,168,402.56	.44	---	---
	Waterworks bonds, 1957, improvement fund	220,992.71	51,500.00	64,646.03	158,057.93	49,788.75	49,788.75
	Waterworks bonds, 1957, interest and redemption fund	---	1,573,180.00	1,573,180.00	---	---	---
	Capital improvement fund	2,797.17	22,109.00	18,710.75	334.01	5,852.41	5,852.41
	Total other funds	223,789.88	3,127,683.00	2,996,280.23	158,392.38	196,800.27	196,800.27
	Total	\$ 223,789.88	9,722,183.00	8,455,851.22	1,184,790.90	305,330.76	305,330.76

SAN DIEGO COUNTY WATER AUTHORITY

Schedule 4
SUMMARY STATEMENT OF CASH RECEIPTS AND DISBURSEMENTS
Year ended June 30, 1966

	Cash Balance		Cash		Interfund Transfers	Cash Balance
	July 1, 1965	Receipts	Disbursements	Out		
General fund	\$ 198,260.24	8,012,420.13	7,332,446.02	961,491.53	1,009,536.92	850,155.96
Reserve fund	742,335.48	1,903,199.76	2,365,824.43	1,139,200.00	667,200.00	751,713.81
Waterworks bonds, 1947, interest and sinking fund	261,909.88	519,896.34	670,125.64	313,586.65	240,500.00	180,677.23
U. S. Government contract fund	9,525.67	1,233,253.98	1,301,302.56	536,600.00	469,400.00	8,677.09
Waterworks bonds, 1957, improvement fund	2,828,531.95	1,467,663.98	1,175,153.91	359,489.48	941,264.06	2,539,269.44
Waterworks bonds, 1957, interest and redemption fund	78,182.01	1,749,864.06	1,849,151.71	1,226,000.00	1,203,700.00	1,194.36
Capital improvement fund	559,423.00	311,554.04	219,935.98	54,464.79	79,231.47	606,274.36
Totals	\$ 4,678,171.23	15,193,764.29	14,933,940.25	4,610,832.45	4,610,832.45	4,937,985.27

TREASURY CASH ON DEPOSIT JUNE 30, 1966

Demand deposits:	
San Diego Trust and Savings Bank	706.95
First National Bank of San Diego (Main Office)	199,184.27
Time deposits:	
First National Bank of San Diego	3,808,000.00
San Diego Trust and Savings Bank	200,000.00
Security First National Bank	500,000.00
United States National Bank	400,000.00
Deposits in transit	10,290.10
Less outstanding warrants	5,117,474.37
Treasury cash, June 30, 1966, as above	179,479.10
	\$4,937,985.27

See accompanying notes to financial statements.

FINANCIAL REPORT

Schedule 5
STATEMENT OF INVESTMENTS
June 30, 1966

Description	Date Acquired	Interest Rate	Yield	Maturity Date	Maturity Value	Book Value(1)
U. S. Treasury Bonds	1/15/65	4%	4%	2/15/70	\$190,000.00	190,000.00
U. S. Treasury Bills	1/31/66	-	4.66%	7/28/66	75,000.00	73,271.92
					\$265,000.00	263,271.92

(1) Approximate market value \$256,000.00.

Distribution by Funds

General fund	133,335.00	132,331.92
Reserve fund	99,940.00	99,940.00
Waterworks bonds, 1947, interest and sinking fund	31,725.00	31,000.00
	\$265,000.00	263,271.92

See accompanying notes to financial statements.

SAN DIEGO COUNTY WATER AUTHORITY

Schedule 6

STATEMENT OF BONDS PAYABLE

June 30, 1966

Description	Rate of Interest	Date of	
		Issue	Maturity
Waterworks bonds, 1947	2%	1947	1967-71
Waterworks bonds, 1957	1%-6%	1957	1967-94

BONDED DEBT MATURITIES

Fiscal Year	Waterworks Bonds, 1947		
	Principal	Interest	Total
1966-67	\$ 150,000.00	9,500.00	159,500.00
1967-68	100,000.00	7,000.00	107,000.00
1968-69	100,000.00	5,000.00	105,000.00
1969-70	100,000.00	3,000.00	103,000.00
1970-71	100,000.00	1,000.00	101,000.00
1971-72	-	-	-
1972-73	-	-	-
1973-74	-	-	-
1974-75	-	-	-
1975-76	-	-	-
1976-77	-	-	-
1977-78	-	-	-
1978-79	-	-	-
1979-80	-	-	-
1980-81	-	-	-
1981-82	-	-	-
1982-83	-	-	-
1983-84	-	-	-
1984-85	-	-	-
1985-86	-	-	-
1986-87	-	-	-
1987-88	-	-	-
1988-89	-	-	-
1989-90	-	-	-
1990-91	-	-	-
1991-92	-	-	-
1992-93	-	-	-
1993-94	-	-	-
Totals	\$ 550,000.00	25,500.00	575,500.00

Waterworks bonds, 1947, dates of maturity: January 1 - Bonds and interest coupons
July 1 - Interest coupons only

See accompanying notes to financial statements.

FINANCIAL REPORT

Schedule 6

STATEMENT OF BONDS PAYABLE

June 30, 1966

Authorized	Bonds Issued	Outstanding
\$ 2,000,000.00	\$ 2,000,000.00	\$ 550,000.00
35,000,000.00	35,000,000.00	33,915,000.00

BONDED DEBT MATURITIES

Waterworks bonds, 1957			Total		
Principal	Interest	Total	Principal	Interest	Total
300,000.00	1,288,780.00	1,588,780.00	450,000.00	1,298,280.00	1,748,280.00
340,000.00	1,272,580.00	1,612,580.00	440,000.00	1,279,580.00	1,719,580.00
420,000.00	1,254,180.00	1,674,180.00	520,000.00	1,259,180.00	1,779,180.00
480,000.00	1,231,180.00	1,711,180.00	580,000.00	1,234,180.00	1,814,180.00
560,000.00	1,204,580.00	1,764,580.00	660,000.00	1,205,580.00	1,865,580.00
690,000.00	1,176,380.00	1,866,380.00	690,000.00	1,176,380.00	1,866,380.00
770,000.00	1,145,705.00	1,915,705.00	770,000.00	1,145,705.00	1,915,705.00
830,000.00	1,111,505.00	1,941,505.00	830,000.00	1,111,505.00	1,941,505.00
890,000.00	1,078,425.00	1,968,425.00	890,000.00	1,078,425.00	1,968,425.00
970,000.00	1,043,625.00	2,013,625.00	970,000.00	1,043,625.00	2,013,625.00
1,070,000.00	1,005,600.00	2,075,600.00	1,070,000.00	1,005,600.00	2,075,600.00
1,140,000.00	963,525.00	2,103,525.00	1,140,000.00	963,525.00	2,103,525.00
1,195,000.00	918,435.00	2,113,435.00	1,195,000.00	918,435.00	2,113,435.00
1,260,000.00	870,910.00	2,130,910.00	1,260,000.00	870,910.00	2,130,910.00
1,330,000.00	825,615.00	2,155,615.00	1,330,000.00	825,615.00	2,155,615.00
1,400,000.00	778,090.00	2,178,090.00	1,400,000.00	778,090.00	2,178,090.00
1,470,000.00	727,070.00	2,197,070.00	1,470,000.00	727,070.00	2,197,070.00
1,540,000.00	673,475.00	2,213,475.00	1,540,000.00	673,475.00	2,213,475.00
1,620,000.00	617,305.00	2,237,305.00	1,620,000.00	617,305.00	2,237,305.00
1,680,000.00	557,640.00	2,237,640.00	1,680,000.00	557,640.00	2,237,640.00
1,740,000.00	495,775.00	2,235,775.00	1,740,000.00	495,775.00	2,235,775.00
1,815,000.00	431,492.00	2,246,492.00	1,815,000.00	431,492.00	2,246,492.00
1,880,000.00	364,420.00	2,244,420.00	1,880,000.00	364,420.00	2,244,420.00
1,960,000.00	294,700.00	2,254,700.00	1,960,000.00	294,700.00	2,254,700.00
2,040,000.00	222,012.00	2,262,012.00	2,040,000.00	222,012.00	2,262,012.00
2,100,000.00	146,357.00	2,246,357.00	2,100,000.00	146,357.00	2,246,357.00
2,185,000.00	68,417.00	2,253,417.00	2,185,000.00	68,417.00	2,253,417.00
260,000.00	8,840.00	268,840.00	260,000.00	8,840.00	268,840.00
33,915,000.00	21,776,618.00	55,691,618.00	34,465,000.00	21,802,118.00	56,267,118.00

Waterworks bonds, 1957, dates of maturity: February 1 - Bonds and interest coupons
August 1 - Interest coupons only

SAN DIEGO COUNTY WATER AUTHORITY

Schedule 7

PROPERTY, PLANT AND EQUIPMENT AND ACCUMULATED DEPRECIATION

Year ended June 30, 1966

	Date Acquired	Asset		
		Balance July 1, 1965	Additions, Net of Retirements*	Balance June 30, 1966
First San Diego Apeduct:				
First barrel (Authority's share)	12/11/47	\$ 6,897,246.24	-	6,897,246.24
Second barrel (Authority's share)	2/25/55	8,954,660.61	-	8,954,660.61
Access roads	6/26/55	14,340.65	-	14,340.65
Rights of way		297,653.41	-	297,653.41
Service connections	Various	258,604.21	3,272.92	261,877.13
		<u>15,474,505.12</u>	<u>3,272.92</u>	<u>15,477,778.05</u>
Second San Diego Apeduct:				
First barrel and improvements	7/1/59	33,219,728.94	-	33,219,728.94
Access roads	Various	24,980.36	154.37	25,134.73
Rights of way	Various	315,876.04	-	315,876.04
Chlorination station	6/7/63	133,664.26	-	133,664.26
Cross connection	6/20/66	-	3,229,299.61	3,229,299.61
Service connections	Various	597,615.71	11,220.78	608,836.49
		<u>34,231,665.31</u>	<u>3,349,684.76</u>	<u>37,581,350.07</u>
La Mesa Sewerwater extension:				
Pipeline	12/31/48	1,449,147.44	-	1,449,147.44
Rights of Way	12/31/48	14,129.99	-	14,129.99
Service connections	12/31/48	2,622.04	-	2,622.04
		<u>1,465,900.47</u>	<u>-</u>	<u>1,465,900.47</u>
Palomar Oceanic Line (note 5):				
Pipeline	12/31/48	778,737.54	(93,807.85)	684,929.69
Rights of way	12/31/48	8,125.14	(217.57)	7,907.57
Service connection	1/22/52	195.40	-	195.40
		<u>787,058.10</u>	<u>(21,025.42)</u>	<u>766,032.68</u>
San Diego Headquarters:				
Building and improvements	6/26/58	129,100.82	-	129,100.82
Land	6/26/58	56,000.00	-	56,000.00
		<u>179,100.82</u>	<u>-</u>	<u>179,100.82</u>
Escondido Headquarters:				
Building and improvements	1/26/48	20,591.36	6,593.76	27,185.12
Land	1/26/48	5,351.60	-	5,351.60
		<u>40,802.96</u>	<u>6,593.76</u>	<u>47,396.72</u>
Furniture and fixtures				
	Various	10,838.28	-	10,838.28
Office equipment	Various	13,611.98	6,344.18	20,156.16
Engineering equipment	Various	1,786.43	1,890.13	3,676.56
Automotive equipment	Various	74,646.55	(160.24)	74,486.31
Miscellaneous equipment	Various	27,340.28	3,636.00	30,976.28
		<u>\$ 127,303,516.39</u>	<u>3,243,081.10</u>	<u>130,546,597.49</u>

*Analysis of changes in property, plant and equipment and accumulated depreciation:

Additions	3,271,856.44
Less retirements	(39,780.21)
Additions, net of retirements	3,232,076.23
Less decrease in construction work-in-progress allocated to the above classifications	(2,941,186.91)
Net increase	\$ 290,889.32

See accompanying notes to financial statements

FINANCIAL REPORT

Schedule 7

PROPERTY, PLANT AND EQUIPMENT AND ACCUMULATED DEPRECIATION

Year ended June 30, 1966

Rate or Life	Accumulated Depreciation			Cost, Less Accumulated Depreciation	
	Balance July 1, 1965	Additions, Net of Retirements*	Balance June 30, 1966	1966	1965
100 yrs.	1,200,301.20	79,630.92	1,271,932.12	5,535,314.12	5,605,945.04
100 yrs.	835,616.20	81,869.04	914,669.24	7,159,591.37	7,223,058.41
Not depr.	-	-	-	14,340.65	14,340.65
Not depr.	-	-	-	297,653.41	297,653.41
Various	32,262.76	3,265.28	35,466.94	266,391.10	266,391.10
	<u>2,068,180.16</u>	<u>154,855.24</u>	<u>2,223,035.40</u>	<u>13,253,690.65</u>	<u>13,406,319.96</u>
100 yrs.	1,320,106.16	337,777.68	1,657,883.84	31,191,045.10	31,529,632.78
Not depr.	-	-	-	25,134.73	24,980.36
Not depr.	-	-	-	315,876.04	315,876.04
98 yrs.	5,506.11	1,560.68	6,916.79	126,547.47	127,968.15
93 yrs.	-	-	-	3,229,299.61	-
Various	17,225.48	5,059.92	22,285.40	496,563.09	496,396.23
	<u>1,742,867.75</u>	<u>344,407.28</u>	<u>2,087,275.03</u>	<u>35,245,264.04</u>	<u>35,488,777.56</u>
100 yrs.	244,813.42	14,307.26	259,120.68	1,189,996.66	1,204,334.02
Not depr.	-	-	-	14,129.99	14,129.99
97 yrs.	271.09	27.12	298.21	2,622.04	2,622.04
	<u>245,184.51</u>	<u>14,364.44</u>	<u>259,548.98</u>	<u>1,206,748.70</u>	<u>1,221,086.05</u>
100 yrs.	132,482.80	3,878.15	136,360.95	621,600.61	646,334.61
Not depr.	-	-	-	1,997.59	1,997.59
5 Yrs.	195.40	-	195.40	-	8,125.14
	<u>132,678.20</u>	<u>3,878.15</u>	<u>136,556.35</u>	<u>623,600.20</u>	<u>654,457.34</u>
50 yrs.	17,966.69	2,932.80	20,738.49	106,263.42	111,296.22
Not depr.	-	-	-	50,000.00	50,000.00
	<u>17,966.69</u>	<u>2,932.80</u>	<u>20,738.49</u>	<u>156,263.42</u>	<u>161,296.22</u>
50 yrs.	10,316.45	765.26	11,081.71	21,613.27	25,184.81
Not depr.	-	-	-	5,351.60	5,351.60
	<u>10,316.45</u>	<u>765.26</u>	<u>11,081.71</u>	<u>26,964.87</u>	<u>30,536.41</u>
Various	9,615.48	444.51	10,069.99	748.29	1,192.80
Various	11,005.72	1,220.73	12,226.45	7,624.71	2,696.26
Various	1,761.42	538.03	2,300.45	1,377.10	25.00
Various	53,692.51	(2,267.28)	51,425.23	23,061.08	29,954.04
Various	15,256.18	2,312.12	17,568.30	13,296.08	12,194.20
	<u>1,309,448.11</u>	<u>373,485.43</u>	<u>1,682,933.54</u>	<u>40,715,643.87</u>	<u>41,968,968.19</u>
				534,971.97	
				<u>11,486.55</u>	
				523,485.42	
				<u>523,485.42</u>	

SAN DIEGO COUNTY WATER AUTHORITY

COMMENTS

The San Diego County Water Authority was organized June 9, 1944 under the California County Water Authority Act. The Authority was originally created for the primary purpose of providing and maintaining means of transmitting Colorado River water to member agencies. The San Diego County Water Authority is a member agency of the Metropolitan Water District.

The Authority utilizes a fund accounting system in maintaining the financial records in compliance with applicable legal provisions, Board of Directors' resolutions and ordinances, and other requirements.

The debt service funds and the reserve fund unappropriated balances are usually at their highest levels as of June 30 each year. Debt service cash requirements are quite substantial prior to the time the Authority begins receiving its tax receipts. Examples of monthly debt service requirements are as follows:

Description	Month	Approximate Amount Required
Waterworks bonds, 1967, interest	July	\$ 650,000
U. S. Government contract, payments net of Metropolitan Water District share	August	75,000
"	September	62,000
"	November	75,000
"	December	62,000
Waterworks bonds, 1947: Interest	December	5,000
Principal		150,000
Total debt service cash requirements for July through December		\$ 1,079,000

The Authority receives substantial tax receipts during December and January and again during April and May, and current unsecured taxes of approximately \$70,000 in July.

Although the cash requirements scheduled above relate to debt service, the reserve fund may also be required to finance, temporarily, operating expenses and the purchase of water. The reserve fund is also intended to provide resources in the event of unpredictable repairs or reconstruction of the Authority system required to provide a continuous flow of water to its member agencies.

In addition to its primary purpose of providing a cash reserve pending receipt of taxes, the reserve fund has been created to provide, among other purposes, toward the cost of immediate repairs to or reconstruction of the Authority system in the event of damage or partial destruction thereto, from unpredictable causes, interrupting or threatening to interrupt the continuous flow of water.

FINANCIAL REPORT

Table F-1
TAX ASSESSMENTS AND TAX COLLECTIONS
Fiscal years 1945-46 to 1965-66

	Tax Assessments to Date	Adjustments to Tax Assessments	Tax Collections	Interest and Penalties	Tax on Options	Receipts in Lieu of Taxes	Miscellaneous Tax Sales	Less Refunds	Net Total Collections	Uncollected Taxes Receivable at June 30, 1966
Fullbrook Public Utility District	\$ 163,967.72 (14.70)		163,230.46	514.48	.32	2,425.09	17.36	26.63	165,156.26	722.50
Helix Irrigation District	2,330,465.52 (2,355.65)		2,314,679.06	6,016.49	88.08	4,547.59	631.00	523.45	2,323,427.79	13,428.00
City of National City	511,546.23 (350.76)		509,834.85	1,101.75	8.39	6,259.71	83.36	523.41	515,866.66	2,260.62
City of Oceanside	513,258.16 (320.00)		510,250.32	941.93	5.11	2,364.83	90.80	483.50	513,269.69	3,337.89
City of San Diego	13,808,418.97 (3,336.70)		12,757,540.77	15,463.68	42.39	131,289.89	2,134.24	41,029.20	12,858,142.48	49,395.99
Rancho M. W. D.	106,145.12 (200.71)		105,748.15	489.33	-	2,903.00	1.44	7.08	108,136.86	596.68
Santa Fe Irrigation District	231,629.06 (1,310.71)		231,320.07	1,192.83	821.19	2,392.80	1,691.14	741.48	236,076.57	1,019.70
San Diego Irrigation District	585,375.51 (428.92)		584,182.00	787.01	3.88	1,123.14	121.73	285.49	585,859.29	1,166.59
City of Escondido	346,318.03 (288.60)		344,313.27	658.68	-	13.04	28.84	44.33	344,969.48	2,480.36
South Bay Irrigation District	1,228,369.18 (1,530.85)		1,226,926.22	2,029.33	.39	14,781.66	76.33	12,469.62	1,225,334.34	3,963.67
Rainbow M. W. D.	84,033.74 (81.57)		83,286.44	261.87	-	20,379.87	9.59	9.59	104,196.41	750.87
Poway M. W. D.	122,473.27 (228.83)		119,143.86	605.52	-	-	6.89	17.97	119,738.02	4,101.58
Bonito Colorado M. W. D.	677,789.86 (1,582.21)		675,773.51	1,629.38	1.23	10,794.13	71.70	217.18	688,043.51	3,538.66
Rincon Del Diablo M. W. D.	297,259.63 (928.17)		296,840.70	667.83	-	86,787.48	.84	29.77	314,371.06	1,257.10
Carlsbad M. W. D.	382,837.56 (713.18)		381,021.50	378.77	-	32,176.76	9.10	317.51	414,268.62	2,102.87
Valley Center M. W. D.	90,549.92 (66.45)		90,038.16	373.24	-	-	18.29	8.17	90,421.52	643.21
Rio San Diego M. W. D.	381,409.18 (254.90)		379,751.65	1,933.17	.06	341.81	86.56	243.79	379,882.45	4,372.63
May M. W. D.	211,951.32 (96.79)		209,870.23	667.41	-	150.00	29.55	123.75	210,143.44	2,284.30
Chicopeas M. W. D.	25,322.42 (17.18)		24,786.30	19.69	-	503.00	-	.02	26,055.02	533.20
City of Del Mar	72,566.91 (1,581.97)		72,186.57	367.68	-	503.00	1.05	4.94	74,050.57	882.31
Yuma M. W. D.	14,086.54 (46.05)		14,032.30	1.04	-	500.00	-	2.29	14,532.05	3.19
Total Member Agencies	\$ 20,723,801.25 (1,621.63)		20,626,888.48	39,296.28	972.63	312,713.81	4,505.95	37,614.03	20,906,685.12	98,714.40
Withdrawn areas	4,169.05 (25.96)		4,199.01	11.48	.15	186.64	3.49	5.35	4,394.42	-
Totals	\$ 20,727,970.30 (1,651.59)		20,631,087.49	39,307.76	972.78	312,900.45	4,509.44	37,619.38	20,931,079.54	98,714.40

SAN DIEGO COUNTY WATER AUTHORITY

Table F-2

ASSESSED VALUATIONS AND TAX RATES

Fiscal years 1945-46 to 1965-66

Fiscal Year	Secured Property	Public Utilities	Unsecured Property	Total	Tax Rate Per \$100	
					Secured	Unsecured
1945-46	\$ 212,082,975	28,253,790	29,960,130	270,296,895	0.04	-
1946-47	208,715,150(1)	29,433,450	30,665,910	268,814,510	0.04	0.04
1947-48	233,579,990	32,740,680	40,977,850	307,298,520(2)	0.14	0.04
1948-49	254,227,570	37,482,020	47,177,300	338,886,890	0.14	0.14
1949-50	290,351,875	42,429,140	45,743,200	378,524,215	0.10	0.14
1950-51	306,104,930	43,595,730	44,717,740	394,418,400	0.10	0.10
1951-52	344,620,030	48,432,940	50,904,035	443,977,005	0.10	0.10
1952-53	382,948,860	53,208,220	63,996,330	500,153,410	0.12	0.10
1953-54	490,709,350	63,092,050	69,147,150	622,948,550	0.10	0.12
1954-55	546,272,880	69,243,550	79,629,790	695,146,220	0.10	0.10
1955-56	627,062,960	87,485,390	79,936,450	794,484,800	0.09	0.10
1956-57	680,824,400	101,224,260	97,960,800	879,999,460	0.09	0.09
1957-58	761,088,330	111,151,890	128,785,440	1,001,025,660	0.09	0.09
1958-59	865,283,080	128,479,290	128,124,720	1,121,887,090	0.10	0.09
1959-60	979,491,050	145,317,290	134,846,730	1,259,655,070	0.11	0.10
1960-61	1,116,723,830	165,666,720	159,954,740	1,442,345,290	0.11	0.11
1961-62	1,220,810,650	191,276,650	155,149,890	1,567,237,190	0.11	0.11
1962-63	1,272,506,330	201,245,370	154,989,440	1,628,741,140	0.11	0.11
1963-64	1,340,197,170	209,793,780	159,714,930	1,709,705,880	0.11	0.11
1964-65	1,423,375,590	213,352,470	151,686,520	1,788,414,580	0.11	0.11
1965-66	1,511,967,750	212,605,040	155,417,220	1,879,990,010	0.11	0.11

(1) City of Coronado secured assessed valuations not included in this or subsequent tax levies by the Authority, having withdrawn from the Authority prior to 1946-47.

(2) City of Coronado not included in this or subsequent total valuation.

SAN DIEGO COUNTY WATER AUTHORITY

Table F-3
TAX LEVIES AND TAX COLLECTIONS

Fiscal years 1945-46 to 1965-66

Fiscal Year	Tax Levy (1)	Collection of current year's taxes During Fiscal Year	Percentage of Levy Collected During Fiscal Year	Adjustments to prior years' levies	Collection of prior years' taxes during fiscal year	Total Tax Collections	Ratio of Total Collections to Adjusted Tax Levy (2)	Accumulated Delinquent Taxes	Ratio of Accumulated Delinquent Taxes to Adjusted tax Levy (2)
1945-46	\$ 86,131.33	94,656.51	96.47%	-	-	94,656.51	96.47%	\$ 1,474.82	1.55%
1946-47	107,608.89	105,753.78	98.09	-	1,090.25	106,844.03	99.11	2,439.08	2.26
1947-48	389,591.57	381,563.14	97.94	-	1,682.72	383,245.86	98.42	8,585.39	2.20
1948-49	474,530.78	459,694.39	96.84	-	5,916.41	465,610.80	98.08	17,085.37	3.73
1949-50	401,112.07	382,732.15	97.91	329.58	13,342.55	406,074.70	101.15	13,052.32	3.25
1950-51	397,970.61	390,274.43	98.07	373.44	8,217.82	398,492.25	100.03	12,904.12	3.24
1951-52	450,405.19	441,242.12	97.97	978.97	7,699.55	448,941.67	99.46	15,346.51	3.40
1952-53	594,603.48	585,417.35	98.46	(1,140.30)	12,567.93	597,985.28	100.76	10,894.37	1.82
1953-54	652,335.08	640,239.42	98.15	4,213.42	9,942.33	650,181.75	99.03	17,191.12	2.62
1954-55	709,678.89	685,800.64	97.96	1,246.13	12,638.30	707,838.94	99.56	20,328.20	2.86
1955-56	803,375.25	785,734.26	97.41	(2,099.58)	12,146.64	800,874.90	99.95	20,726.97	2.59
1956-57	874,774.45	861,461.66	98.48	576.90	13,056.01	874,517.67	99.90	21,560.65	2.46
1957-58	965,006.57	946,445.55	98.08	938.17	12,890.09	959,335.64	99.31	28,189.75	2.92
1958-59	1,178,885.92	1,157,255.98	98.17	-	13,347.45	1,170,613.43	99.30	36,462.23	3.09
1959-60	1,436,270.69	1,408,277.57	98.05	(5,274.26)	16,647.80	1,424,925.37	99.53	42,333.29	2.97
1960-61	1,624,733.20	1,586,169.51	97.63	(8,720.61)	21,501.88	1,607,671.39	99.48	50,874.49	3.15
1961-62	1,793,785.34	1,718,875.76	97.44	(2,276.45)	31,477.80	1,750,003.56	99.35	62,330.02	3.54
1962-63	1,816,449.25	1,775,852.25	97.77	(3,688.71)	38,134.68	1,814,066.83	100.07	61,028.63	3.37
1963-64	1,910,019.05	1,862,973.83	97.54	(2,688.07)	36,825.61	1,899,799.44	99.48	70,975.17	3.72
1964-65	2,000,067.76	1,948,533.84	97.44	(6,588.60)	42,596.95	1,991,450.79	99.90	73,003.54	3.66
1965-66	2,101,023.56	2,032,895.16	96.76	1,985.19	44,402.71	2,077,297.87	98.77	98,714.40	4.69

(1) Including adjustments of current year's levy.

(2) Including adjustments to current and prior years' levies.

SAN DIEGO COUNTY WATER AUTHORITY

FINANCIAL REPORT

Table F-4

LEGAL DEBT MARGIN

June 30, 1966

Assessed valuation 1965-66 (Table F-2) \$ 1,879,990,010.00
 Debt limit (15% of assessed valuation) (1) 281,998,501.50
 Amount of debt applicable to debt limit:
 General obligation bonds (2):
 1947 waterworks bonds
 1957 waterworks bonds, Series A
 1957 waterworks bonds, Series B
 1957 waterworks bonds, Series C
 1957 waterworks bonds, Series D
 1957 waterworks bonds, Series E

\$ 550,000.00
 7,355,000.00
 7,280,000.00
 7,780,000.00
 6,780,000.00
4,820,000.00

Total bonded debt

Contractual obligations:
 To U. S. Government on First San Diego Aqueduct:

On first barrel \$ 5,875,000.00
 On second barrel 10,897,108.52

To Metropolitan Water District on annexation charges

16,772,108.52
10,472,152.91

Total contractual obligations

27,244,261.43
61,709,261.43

Total gross indebtedness
 Less portion of fund balances available for debt redemption:
 Waterworks bonds, 1947, interest and sinking fund
 U. S. Government contract fund
 Waterworks bonds, 1957, interest and redemption fund

211,677.23
 8,677.09
1,194.36

221,548.68

Net indebtedness

61,487,712.75

Legal debt margin

\$ 220,510,788.75

(1) Sec. 5 (7), County Water Authority Act.

(2) A bond election was held on June 7, 1966 at which time a \$30,000,000 bond issue was approved. These bonds were unsold at June 30, 1966.

Table F-5
 INSURANCE COVERAGE
 June 30, 1966

	Amount or limit	Company
Comprehensive liability including automobile:		
All coverages except personal injury and auto medical payments for each occurrence and in the aggregate annually as respects the "Products Hazard"	\$ 3,000,000	
Personal injury, each person and aggregate coverage	100,000	
Automobile medical payments, each person	2,000	
Deductible of \$1,000 on property damage liability, except automobiles		Harbor Insurance Company
Buildings and equipment:		
Escondido and San Diego	161,400	Great American Insurance Co.
Office block policy - unscheduled office equipment	43,120	Federal Insurance Company
Chlorination station - optional peril policy	106,000	Great American Insurance Co.
Dwelling - Escondido	12,000	Great American Insurance Co.
Contractor's equipment	32,016	Industrial Indemnity Insurance Co.
Automobile - comprehensive, collision \$100 deductible	Actual cash value	Centennial Insurance Co.
Official bonds:		
L. R. Burzell, General Manager and Chief Engineer	25,000	Great American Insurance Co.
H. C. Griffen, Treasurer	25,000	Great American Insurance Co.
Public employees' blanket bond	50,000	Great American Insurance Co.
Travel accident - employees and directors:		
Death benefits, etc.	50,000	
Medical	5,000	
Aggregate	600,000	Travelers Insurance Co.
Workmen's compensation	Statutory	State Compensation Insurance Fund

SAN DIEGO COUNTY WATER AUTHORITY

FINANCIAL REPORT

Table F-6

METROPOLITAN WATER DISTRICT ANNEXATION CHARGES, ASSESSMENTS AND BALANCES ON AUTHORITY AREAS.

Member Agencies	Date of Annexation	Period of Special Assessments	
		First Yr.	Last Yr.
Annexation Charges Completed to June 30, 1965	---	---	---
Outstanding as of June 30, 1965			
Chula Vista, City of			
Fallbrook Public Utility District			
Lakeside Irrigation District			
Helix Irrigation District	12-17-46	1947-48	1976-77
National City, City of			
Oceanside, City of			
San Diego, City of			
Bueno Colorado M. W. D.	6-11-54	1955-56	1984-85
Carlsbad M. W. D.	6-16-54	1955-56	1984-85
Del Mar, City of	11-23-62	1963-64	1992-93
Escondido, City of	10-9-50	1951-52	1980-81
Fallbrook Public Utility District			
No. 1 Annexation of 1959	8-1-50	1951-52	1980-81
No. 2 Annexation of 1958	11-24-58	1959-60	1988-89
Helix Irrigation District			
Crest P. U. D. Annexation	12-13-48	1949-50	1978-79
El Cajon Dry Island Annexation	12-20-54	1955-56	1984-85
Helix-Watson Ranch Annexation	2-20-59	1960-61	1989-90
Helix-Sunny Slope Ista. Annexation	9-17-59	1960-61	1989-90
Olivenhain M. W. D.	7-25-60	1961-62	1990-91
No. 1 Annexation of 1965	2-11-65	1966-67	1995-96
Otay M. W. D.	10-26-56	1957-58	1986-87
No. 3 Annexation of 1960	10-20-60	1961-62	1990-91
Poway M. W. D.	4-21-54	1955-56	1984-85
No. 1 Annexation of 1959	9-21-59	1960-61	1989-90
Rainbow M. W. D.	4-10-54	1955-56	1984-85
No. 1 Annexation of 1959	5-12-59	1960-61	1989-90
Ramona M. W. D.	8-27-57	1958-59	1987-88
No. 1 Annexation of 1959	5-29-59	1960-61	1989-90
No. 2 Annexation of 1961	9-22-61	1962-63	1991-92
No. 3 Annexation of 1963	9-20-63	1964-65	1993-94
Rincon del Diablo M. W. D.	6-14-54	1955-56	1984-85
Rio San Diego M. W. D.			
(not including Lakeside I. D.)	6-7-56	1957-58	1986-87
No. 2 Annexation of 1959	11-6-59	1960-61	1989-90
No. 3 Annexation of 1960	10-17-60	1961-62	1990-91
San Dieguito Irrigation District	12-13-48	1949-50	1978-79
No. 1 Annexation of 1959	9-15-59	1960-61	1989-90
Santa Fe Irrigation District	12-13-48	1949-50	1978-79
South Bay Irrigation District			
(not including City of Chula Vista)	11-3-52	1953-54	1982-83
Valley Center M. W. D.	5-9-55	1956-57	1985-86
No. 1 Annexation of 1960	12-12-60	1961-62	1990-91
Yuima M. W. D.	12-16-63	1964-65	1993-94
Total			

Table F-6

METROPOLITAN WATER DISTRICT ANNEXATION CHARGES, ASSESSMENTS AND BALANCES ON AUTHORITY AREAS

Amount of Annexation Charge	Special Assessments to 6/30/65	Fiscal Year 1965-66		Remaining Balance 6/30/66
		Special Assessments	Tax Rate ¢ / \$100	
\$ 144,659	\$ 144,659.00	\$ ---	--	\$ ---
13,045,000	7,836,670.79	542,245.34	4	4,666,083.87
1,072,230	362,225.91	33,402.77	5	676,601.32
548,100	184,689.64	18,226.20	4	345,184.16
611,250	41,190.27	20,580.65	18	549,479.08
386,000	182,211.34	12,862.08	5	190,926.58
34,600	19,993.56	1,043.01	4	13,563.43
50,400	10,084.72	1,750.05	14	38,565.23
10,500	5,609.72	436.65	4	4,453.63
327,450	114,612.86	7,284.42	1	205,552.72
8,730	1,465.13	298.05	11	6,966.82
38,250	6,425.86	1,227.99	12	30,596.15
83,880	11,350.02	3,170.48	4	69,359.50
512,520	0	0	--	512,520.00
273,000	75,802.23	6,972.76	2	190,225.01
96,100	12,762.79	3,194.18	14	79,143.03
91,800	30,890.16	2,962.69	2	57,947.15
27,150	4,574.67	878.33	6	21,697.00
167,700	56,928.78	4,627.22	4	106,144.00
24,300	4,096.90	798.57	14	19,404.53
339,000	79,312.06	11,796.24	15	247,891.70
42,330	7,103.14	1,370.95	19	33,855.91
15,480	1,568.47	511.09	23	13,399.54
10,560	358.03	348.15	14	9,853.82
757,200	255,347.44	25,155.55	6	476,697.01
373,980	100,981.77	11,523.09	4	261,474.24
109,110	18,235.52	3,719.31	14	87,155.17
289,890	38,835.07	9,897.66	17	241,157.27
187,100	99,851.87	7,603.46	3	79,644.67
71,820	11,973.82	2,453.65	16	57,392.53
167,000	90,946.72	5,140.74	2	70,912.54
449,370	180,396.59	16,633.45	4	252,319.96
205,630	61,719.68	7,093.08	8	136,867.24
23,700	3,168.20	790.51	19	19,741.29
749,490	25,212.73	24,900.46	94	699,376.81
\$21,344,329	\$10,081,255.46	\$790,920.63		\$10,472,152.91

SAN DIEGO COUNTY WATER AUTHORITY

Table F-7
SAN DIEGO COUNTY WATER AUTHORITY
ANNEXATION CHARGES, ASSESSMENTS AND BALANCES

Area	Date of Annexation	Amount of Annexation Charge	Period of Special Assessments		Special Assessments to 6/30/65	Fiscal Year 1965-66		Remaining Balance of Annexation Charges 6/30/66
			First Year	Last Year		Special Assessments	Tax Rate c/\$100	
Annexation Charges Completed to June 30, 1965		\$ 558,130.00			\$ 558,130.00	\$ 0	\$ 0	
Annexation Charges Outstanding as of June 30, 1965:								
Del Mar, City of	11-23-62	130,700.00	1963-64	1972-73	27,044.75	13,515.15	12¢	90,140.10
Fallbrook P. U. D.	11-24-58	8,500.00	1959-60	1968-69	5,267.34	872.99	7¢	2,359.67
No. 2 Annexation of 1958								
Belix I. D.								
Sunnyslope Heights Annex.	9-17-59	11,600.00	1960-61	1969-70	6,054.09	1,121.83	11¢	4,424.08
Olivemain M. W. D.	7-25-60	13,600.00	1961-62	1970-71	5,885.96	1,573.58	2¢	6,140.46
No. 1 Annex of 1965	2-11-65	13,500.00	1966-67	1975-76	500.00	0		13,000.00
Otay M. W. D.								
No. 3 Annex of 1960	10-20-60	16,800.00	1961-62	1970-71	7,118.38	1,778.13	8¢	7,903.49
Poway M. W. D.								
No. 1 Annex of 1959	9-21-59	4,000.00	1960-61	1969-70	2,277.39	438.84	3¢	1,283.77
Rainbow M. W. D.								
No. 1 Annex of 1959	5-12-59	3,500.00	1960-61	1969-70	1,889.41	342.17	6¢	1,268.42
Ranona, M. W. D.								
No. 1 Annex of 1959	5-29-59	6,600.00	1960-61	1969-70	3,548.92	647.91	9¢	2,402.17
Rio San Diego M. W. D.								
No. 2 Annex of 1959	11-6-59	18,300.00	1960-61	1969-70	9,514.29	1,845.73	7¢	6,939.98
No. 3 Annex of 1960	10-17-60	57,100.00	1961-62	1970-71	23,121.62	5,781.53	10¢	28,196.83
San Dieguito I. D.								
No. 1 Annex of 1959	9-15-59	8,400.00	1960-61	1969-70	4,249.45	905.38	6¢	3,245.17
Valley Center M. W. D.								
No. 1 Annex of 1960	12-12-60	3,900.00	1961-62	1970-71	1,654.85	372.59	9¢	1,872.56
Yuima M. W. D.	12-16-63	40,750.00	1964-65	1973-74	4,638.80	4,194.70	19¢	31,896.50
Total		\$825,380.00			\$690,916.25	\$33,390.55		\$201,073.20