

SAN DIEGO COUNTY
WATER AUTHORITY



NINETEENTH ANNUAL REPORT
1965

SAN DIEGO COUNTY WATER AUTHORITY
ORGANIZED JUNE 9, 1944

NINETEENTH
ANNUAL REPORT
of Authority Operations

For

Fiscal Year Ending June 30, 1965

Linden R. Burzell
General Manager and Chief Engineer

SAN DIEGO, CALIFORNIA

1965

TABLE OF CONTENTS

	Page
MEMBER AGENCIES, DATE OF ENTRY AND REPRESENTATIVES	4
OFFICERS OF BOARD OF DIRECTORS AND EXECUTIVE OFFICERS	5
BOARD OF DIRECTORS	6
COMMITTEES OF THE BOARD	8
AUTHORITY HIGHLIGHTS IN BRIEF	9
LETTER OF TRANSMITTAL	11
REPORT OF ACTIVITIES	13
ADMINISTRATION	13
Board of Directors	13
Administrative Staff	14
Employee Relations	14
Public Relations	14
GROWTH OF AUTHORITY	16
Area	16
Population	18
Assessed Valuation	18
WATER SUPPLY AND CONSUMPTION	19
Water Supply and System	19
Water Deliveries and Rates	20
Water Production of Member Agencies	21
Agricultural Water Use	24
Authority Facilities	24
Water Quality	26
Chlorination	28
Allocation of Water Among Member Agencies	29
Future Supplies	29
OPERATION AND MAINTENANCE	31
Maintenance Headquarters	31
Patrol	31
CROSS-CONNECTION PROJECT	32
SERVICE CONNECTIONS	34
Yuima No. 1 Service Connection	35
Valley Center Municipal Water District No. 5 Service Connection	35
City of Escondido No. 2 Service Connection	35
LEGAL DEPARTMENT ACTIVITIES	35
MEMBERSHIP IN THE METROPOLITAN WATER DISTRICT	37
Constituent Member Agencies and Area	39
Assessed Valuation	39
Water Sales	39
Tax Rate	41
FIGURES	
A. Authority Area Within San Diego County	12
B. Water Production of Authority Member Agencies	25
C. Rainfall Record at San Diego, California	27
D. Composition of The Metropolitan Water District of Southern California	38
E. Water Systems of Metropolitan Water District and San Diego County Water Authority	40

TABLE OF CONTENTS

(Continued)

INDEX OF TABLES

	Page
APPENDIX A - STATISTICAL TABLES	
1. Area - Authority Member Agencies	44
2. Population Growth - County and Authority Area	45
3. Population - Authority Member Agencies and County	46
4. Assessed Valuations - Authority Member Agencies and County	47
5. Sales of Colorado River Water - Fiscal Year 1964-65	48
6. Water Sales - 1947 to 1965	50
7. Water Production Within Authority Agencies - Fiscal Years 1955-56 to 1964-65	51
8. Water Production of Authority Agencies - Fiscal Year 1964-65	52
9. Unit Water Production - Per Acre and Per Capita 1964-65	53
10. Agricultural Use of Water - Fiscal Year 1964-65	54
11. Authority Storage in San Vicente Reservoir	55
12. Chemical Character of Natural Colorado River Water at West Portal of San Jacinto Tunnel	56
13. Allocation of Right to Purchase Authority Water	57
14. Water Sales by Metropolitan Water District	58
15. Water Production - Metropolitan Water District Constituent Areas	59
16. Analysis of Colorado River Aqueduct Water Taken at West Portal of San Jacinto Tunnel	60
17. Assessed Valuations and Tax Rates of The Metropolitan Water District of Southern California	61
APPENDIX B - FINANCIAL REPORT	
Letter of Transmittal	62
Auditor's Report	63
Exhibit A. Balance Sheet	64
Exhibit B. Statement of Changes in Surplus and Reserves	66
Exhibit C. Statement of Revenue and Expense	68
Notes to Financial Statements	69
Schedule 1. Statement of Operating Expense	70
Schedule 2. Statement of Revenue - Estimated and Actual	71
Schedule 3. Statement of Appropriations and Expenditures	72
Schedule 4. Summary Statement of Cash Receipts and Disbursements	74
Schedule 5. Statement of Investments	75
Schedule 6. Statement of Bonds Payable	76
Table F-1. Tax Assessments and Collections	78
Table F-2. Assessed Valuations and Tax Rates	79
Table F-3. Tax Levies and Tax Collections	80
Table F-4. Legal Debt Margin	81
Table F-5. Metropolitan Water District Annexation Charges, Assessments and Balances on Authority Areas	82
Table F-6. San Diego County Water Authority Annexation Charges, Assessments and Balances	84

SAN DIEGO COUNTY WATER AUTHORITY

Member Agencies, Date of Entry and
Representatives on Board of Directors on June 30, 1965

Cities

Del Mar Nov. 23, 1962 . O. B. Sholders
 Escondido Oct. 9, 1950 . Lloyd M. Mitchell
 National City June 9, 1944 . Charles G. Kerch
 Oceanside June 9, 1944 . Robert A. Weese
 San Diego June 9, 1944 . Baylor Brooks
 John M. Cranston
 R. E. Graham
 Fred A. Heilbron
 Gaylord Henry
 George Kerrigan
 H. Fred Landgraf
 Fred W. Simpson
 J. Stacey Sullivan
 Arthur C. Wells

Irrigation Districts

Helix June 9, 1944 . Michael Fletcher
 Harry Griffen
 Wm. G. Sloan
 San Dieguito Dec. 13, 1948 . Charles W. Hales
 Santa Fe Dec. 13, 1948 . R. E. Badger
 South Bay Nov. 3, 1952 . Lloyd L. Lee
 Walter L. Steele

(Includes City of Chula Vista, an independent
member agency, from June 9, 1944, to Nov. 3, 1952)

Municipal Water Districts

Bueno Colorado June 11, 1954 . Hans H. Doe
 Carlsbad June 16, 1954 . Allan O. Kelly
 Olivenhain July 25, 1960 . Howard G. Golem
 Otay Oct. 26, 1956 . Ralph W. Chapman
 Poway April 21, 1954 . David R. Shepardson
 Rainbow April 10, 1954 . Walter R. Beck
 Ramona August 27, 1957 . John E. Langan
 Rincon del Diablo June 14, 1954 . Charles A. Cryster
 Rio San Diego June 7, 1956 . Charles C. Price
 (Includes Lakeside I. D., an independent member
agency from June 9, 1944 to June 7, 1956)
 Valley Center May 9, 1955 . Cartwright Smith
 Yuima Dec. 16, 1963 . E. W. Blom

Public Utility District

Fallbrook June 9, 1944 . Franz R. Sachse

OFFICERS OF BOARD OF DIRECTORS

1964-65



Chairman
Fred A. Heilbron
San Diego
7-44 to 6-65



Vice Chairman
R. E. Badger
Santa Fe
Irrigation District
9-57 to 6-65



Secretary
Hans H. Doe
Bueno Colorado
Municipal Water District
6-54 to 6-65



Treasurer
Harry Griffen
Helix
Irrigation District
7-56 to 6-65



Controller
Howard G. Golem
Olivenhain Municipal
Water District
1-62 to 6-65

EXECUTIVE OFFICERS



Linden R. Buzzell
General Manager and
Chief Engineer



W. H. Jennings
General Counsel

BOARD OF DIRECTORS

1964-65

For Officers, see Page 5



Walter R. Beck
Rainbow Municipal
Water District
9-62 to 6-65



E. W. Blom
Yulma Municipal
Water District
1-64 to 6-65



Baylor Brooks
San Diego
5-54 to 10-60
4-62 to 6-65



Ralph W. Chapman
Otay Municipal
Water District
1-64 to 6-65



John M. Cranston
San Diego
10-64 to 6-65



Charles A. Crytser
Rincon del Diablo
Municipal Water District
6-54 to 6-65



Michael Fletcher
Helix
Irrigation District
10-63 to 6-65



R. E. Graham
San Diego
7-63 to 6-65



Charles W. Hales
San Dieguito
Irrigation District
6-58 to 6-65



G. R. Henderson
San Diego
10-55 to 11-64



Gaylord L. Henry
San Diego
11-64 to 6-65



C. P. Kane
Valley Center
Municipal Water District
2-59 to 3-61
8-61 to 11-64



Allan O. Kelly
Carlsbad Municipal
Water District
11-63 to 6-65



Charles G. Kerch
National City
5-57 to 6-65



George Kerrigan
San Diego
9-53 to 6-65

BOARD OF DIRECTORS

1964-65

(Continued)



H. Fred Landgraf
San Diego
10-55 to 6-65



John E. Langan
Ramona Municipal
Water District
4-61 to 6-65



Lloyd L. Lee
South Bay
Irrigation District
4-61 to 6-65



Lloyd M. Mitchell
Escondido
12-56 to 6-65



Charles C. Price
Rio San Diego
Municipal
Water District
7-58 to 6-65



Franz R. Sachse
Fallbrook Public
Utility District
7-49 to 12-50
10-56 to 6-65



David R. Shepardson
Poway Municipal
Water District
4-54 to 6-65



O. B. Sholders
Del Mar
4-63 to 6-65



Fred W. Simpson
San Diego
7-44 to 6-65



Wm. G. Sloan
Helix
Irrigation District
11-59 to 6-65



Cartwright Smith
Valley Center
Municipal Water District
3-65 to 6-65



Walter L. Steele
South Bay
Irrigation District
9-62 to 6-65



Stacey J. Sullivan
San Diego
7-62 to 6-65



Robert A. Weese
Oceanside
3-53 to 6-65



Arthur C. Wells
San Diego
2-53 to 6-65

COMMITTEES OF THE BOARD

June 30, 1965

ENGINEERING AND OPERATIONS COMMITTEE

William G. Sloan, Chairman
 Robert A. Weese, Vice Chairman
 R. E. Badger
 E. W. Blom
 Baylor Brooks
 Ralph W. Chapman
 Hans H. Doe
 Howard G. Golem
 R. E. Graham
 Charles W. Hales
 Allan O. Kelly
 Lloyd L. Lee
 Oliver B. Sholders

WATER PROBLEMS AND POLICY COMMITTEE

Hans H. Doe, Chairman
 R. E. Badger
 Baylor Brooks
 John M. Cranston
 Charles A. Crytser
 R. E. Graham
 Harry Griffen
 Fred A. Heilbron
 Lloyd L. Lee
 Lloyd M. Mitchell
 Franz R. Sachse
 Fred W. Simpson
 Cartwright Smith
 J. Stacey Sullivan

ORGANIZATION AND PERSONNEL COMMITTEE

Fred W. Simpson, Chairman
 David R. Shepardon,
 Vice Chairman
 Ralph W. Chapman
 Michael Fletcher
 Howard G. Golem
 Charles W. Hales
 Charles G. Kerch
 John E. Langan
 Charles C. Price
 William G. Sloan
 Cartwright Smith
 Robert A. Weese

FINANCE AND INSURANCE COMMITTEE

Arthur C. Wells, Chairman
 Harry Griffen, Vice Chairman
 Walter R. Beck
 E. W. Blom
 Charles A. Crytser
 Michael Fletcher
 Gaylord Henry
 George Kerrigan
 H. Fred Landgraf
 John E. Langan
 Lloyd M. Mitchell
 Charles C. Price
 Oliver B. Sholders
 Walter L. Steele
 J. Stacey Sullivan

LEGAL AND CLAIMS COMMITTEE

Franz R. Sachse, Chairman
 David R. Shepardon, Vice Chairman
 Walter R. Beck
 John M. Cranston
 Gaylord Henry
 Allan O. Kelly
 Charles G. Kerch
 George Kerrigan
 H. Fred Landgraf
 Walter L. Steele
 Arthur C. Wells

LANDS AND RIGHTS OF WAY COMMITTEE

Lloyd M. Mitchell, Chairman
 Charles G. Kerch, Vice Chairman
 Harry Griffen
 H. Fred Landgraf
 Lloyd L. Lee
 Franz R. Sachse
 David R. Shepardon

ADMINISTRATIVE CODE COMMITTEE

Charles C. Price, Chairman
 Harry Griffen
 Lloyd L. Lee

EXECUTIVE OFFICERS AND OPERATING STAFF

General Manager and Chief Engineer Linden R. Buzzell
 General Counsel William H. Jennings
 Assistant Chief Engineer Allen H. Jones
 Chief Accounting Officer Henry Lozano
 Treasurer Harry Griffen
 Controller Howard G. Golem
 Executive Secretary and Deputy Treasurer Linda K. De Groot
 Superintendent, Maintenance and Operation Joseph E. Lester

AUTHORITY HIGHLIGHTS
 IN BRIEF

	1964-65	1963-64	Percent Change
GROWTH OF AREA			
Number of Agencies	21	21	0
Total Area - Acres	718,900	714,945	+ 0.6
Population	1,150,000	1,125,000	+ 2.2
Assessed Valuation	\$1,788,388,770	\$1,709,700,900	+ 4.6
OPERATIONS			
Water Imported by Authority - ac. ft.	240,679	231,935	+ 3.8
Water Production of Agencies - ac. ft.	243,893	231,548	+ 5.3
Local Water Used - ac. ft.	25,281	25,448	- 0.7
Authority Water Used - ac. ft.	218,612	206,100	+ 6.1
Miles of Pipe Line	168	161	+ 4.4
Miles of Patrol Roads Maintained	92	87*	+ 5.7
Number of Service Connections	51	50	+ 2.0
Number of Employees	28	28	0
FINANCIAL			
Revenues:			
Water Revenue	\$5,488,411	\$5,151,832	+ 6.5
Other Revenue	902,140	722,491	+ 24.9
Taxes	1,996,308	1,903,530	+ 4.9
Expenditures:			
Operation and Maintenance	\$ 224,653	\$ 230,805	- 2.7
Purchase of Water	5,408,171	4,730,906	+ 14.3
New Construction	2,866,454	285,185	+905.1
Payments on Outstanding Debt	1,279,030	1,169,030	+ 9.4
Total Investment in Plant:			
Total Fixed Assets	\$104,052,917	\$98,679,629	+ 5.4
Long-term Debt	63,799,211	65,231,674	- 2.2

*Revised from previous report



Board of Directors
San Diego County Water Authority

Gentlemen:

Transmitted herewith is the Nineteenth Annual Report of the Authority, covering activities during the fiscal year ending June 30, 1965.

Two milestones were reached during the year by completion of the Cross-Connection pipeline which ties the two San Diego Aqueducts together and the decision to proceed with the second barrel of the Second San Diego Aqueduct.

The Cross-Connection project was completed on time and well within the estimated cost. This facility adds eight miles of 66" diameter pipeline to the facilities of the Authority and will add to the capacity of the Authority system after completion of the second barrel of the Second Aqueduct. The final contract cost was \$2,311,852.

On February 25, 1965, the staff submitted a report making recommendations for the timing of construction and sizing of the second barrel of the Second San Diego Aqueduct. Subsequent action by the Board determined that a bond election in the amount of \$30,000,000 would be held in June, 1966.

The capacity of the two aqueducts of the Authority remains adequate to provide all of the water required by member agencies, leaving some allowance for growth and expansion. Forecasts indicate that the capacity will provide sufficient water for the Authority until completion of the second barrel of the Second San Diego Aqueduct in 1970.

Very truly yours,

Linden R. Burzell

Linden R. Burzell
General Manager and Chief Engineer

November 1, 1965

Palomar Observatory housing 200 inch telescope on Palomar Mountain in San Diego County.

Picture courtesy Title Insurance and Trust Co.

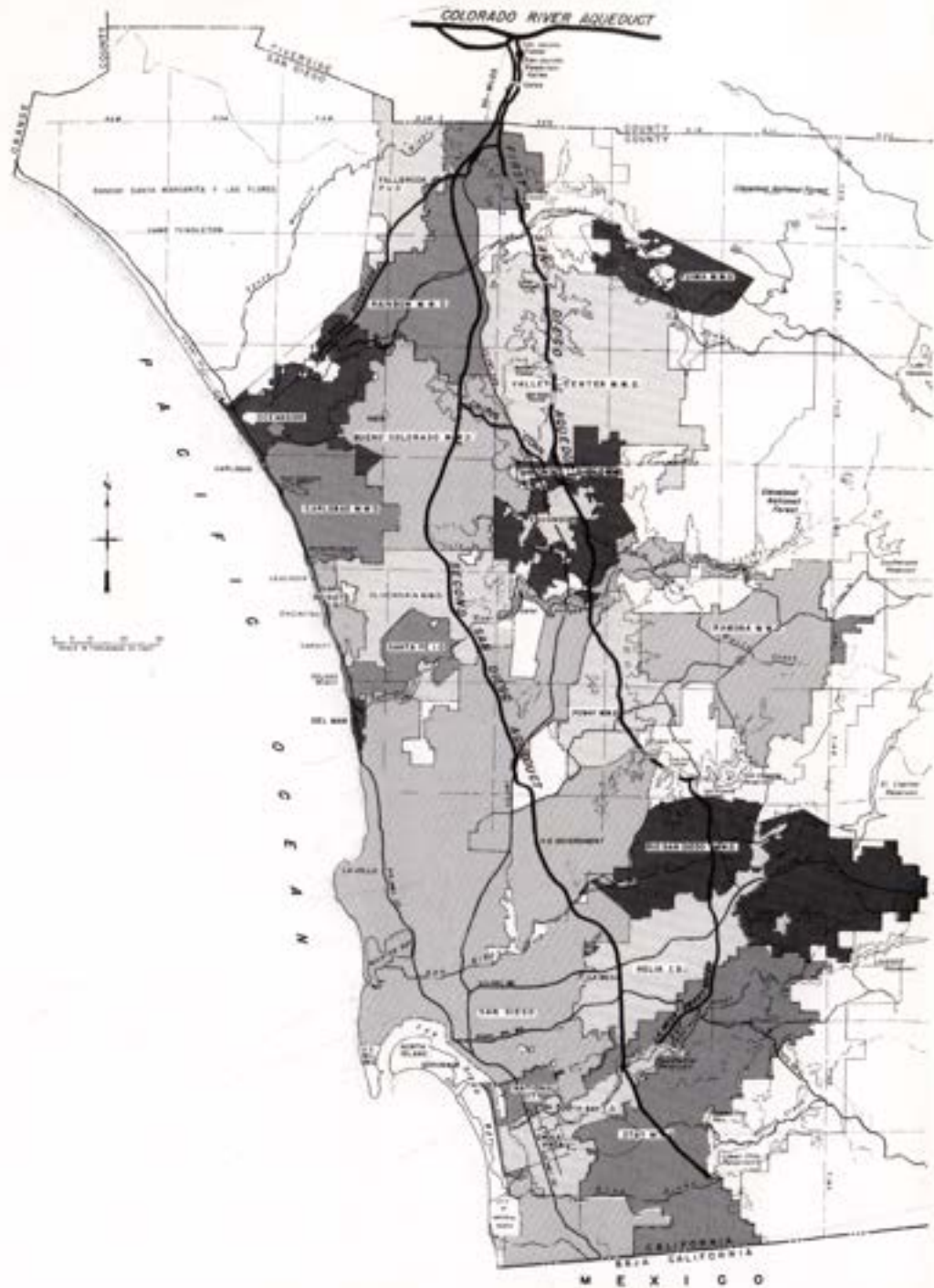


Figure A. Authority area within San Diego County

**SAN DIEGO COUNTY WATER AUTHORITY
REPORT OF ACTIVITIES
FISCAL YEAR 1964-65**

ADMINISTRATION

Board of Directors

The San Diego County Water Authority's governing body is a Board of Directors, consisting of thirty-three members, appointed by the governing bodies of member agencies. Each agency is entitled to one representative on the Authority Board and an additional one for each \$100,000,000 of assessed valuation, as determined by the Assessor of San Diego County. Three agencies are represented on the Board by more than one Director at this time. The City of San Diego is represented by ten Directors, the Helix Irrigation District by three, and the South Bay Irrigation District by two.

The officers of the Board of Directors are elected biennially in July of even-numbered years by members of the Board of Directors. Directors Fred A. Heilbron, Ray E. Badger, and Hans H. Doe continue to occupy the offices of Chairman, Vice Chairman, and Secretary, respectively. The office of the Treasurer, a part-time appointive position, is held by Director Harry Griffen. The office of Controller, another part-time appointive position, is held by Director Howard G. Golem.

The Authority Board of Directors maintains seven permanent committees, each giving initial consideration to Board problems within its scope, as outlined in Section 2, 2 of the Administrative Code. The results of committee deliberations are transmitted to the Board with recommendation for action. The standing committees are Finance and Insurance; Engineering and Operations; Organization and Personnel; Water Problems and Policy; Lands and Rights of Way; Legal and Claims; and Administrative Code. Directors are appointed to committees by the Chairman of the Board. Membership of each of the standing committees is shown on page 8 of this report. As special problems arise, special committees are appointed to meet the needs.

The following changes in Board membership occurred during the year: In October, 1964, Mr. John M. Cranston was appointed by the City of San Diego to fill the unexpired term of Director John A. Donnelly who resigned from the Authority Board on September 21, 1961. With the growth of the City of San Diego permitting an additional Director, Mr. Gaylord L. Henry was appointed in November, 1964 to represent the City of San Diego on the Authority Board. Director Cartwright Smith was appointed in March, 1965 to represent the Valley Center Municipal Water District on the Authority Board to fill

the unexpired term of the late Director Clarence P. Kane. At the close of the fiscal year, no successor had been appointed to fill the vacancy brought about by the passing of Director George R. Henderson in November, 1964.

Administrative Staff

Two changes in the staff occurred during the fiscal year. Mrs. Maxine M. McKinley resigned August 1, 1964 as Executive Secretary to the Board. She was succeeded by Mrs. Linda K. DeGroot, who joined the Authority staff in September, 1964. Mrs. Louise Boyer, Intermediate Account Clerk, resigned during September, 1964, and was succeeded by Mrs. Beverly May, Junior Account Clerk. As of June 30, 1965, Authority personnel consisted of twenty-nine persons including the General Counsel.

Employee Relations

The Authority continues to provide a contract with California Physicians Service, under which employees receive medical and hospital benefits. The entire expense of this service is carried by the Authority. Coverage may be extended by an employee to members of his family, but such coverage is at the expense of the employee. The Authority also maintains a retirement contract with the State of California, under which employees are members of the State Retirement System, with the employees contributing the major cost of this benefit by monthly deductions from their salaries. The State Retirement System is combined with the Federal Social Security System, so that contributions include payments to the Federal Government as well. Retirement under the State Retirement System is mandatory at the age of seventy.

After one year of continuous employment, each employee receives a 12-working day vacation per year. After five years, each employee is entitled to a 15-working day vacation annually. Sick leave benefits accumulate at the rate of one day for each month of employment after six months of continuous employment.

Public Relations

The Authority does not have a formal public relations department. During the year, Mr. Frederick Whitney was employed to develop a public relations display at the Del Mar Fair for the period June 25 to July 5, 1965. Mr. Whitney organized a program which dramatized the State Water Project and illustrated how the Authority, through the



Dispensing Feather River Water at the County Fair

Metropolitan Water District, will obtain Feather River Project water. A 2,500 gallon stainless steel tank truck was hired to bring a load of pure Northern California water down to be distributed free to the public attending the fair. A considerable number of favorable newspaper articles resulted from this activity, and approximately thirty thousand residents of San Diego County visited the Authority display to hear about the Authority and drink Feather River water. A new brochure was developed and distributed to 7,000 interested persons.

The staff of the Authority continued its program of public information by participating in several presentations before service clubs, schools, and public bodies explaining the story of the San Diego County Water Authority and the water supply from the Colorado River and the future supply from Northern California.

The three Water Authority Board members on the Metropolitan Water District Board each sponsored a week end trip over the Water Authority system and that of the Metropolitan Water District with an overnight stay at Gene Camp on the Colorado River. Approximately ninety business and civic leaders took part in these trips.

The Water Authority supports the public relations program of the Six Agency Committee. Mr. Fred W. Simpson, a Director on the Water Authority Board, is the Authority's representative on the Six Agency Committee, as well as a member of the Colorado River Board. The Six Agency Committee supports the Colorado River Association, the public relations medium for Colorado River matters, including plans for a regional project to supplement the water supply of the Colorado River. The Colorado River Board is the official state agency, set up by the State Legislature to protect the rights of California in the Colorado River.

GROWTH OF AUTHORITY

Area

The area of the Authority increased during the fiscal year. Annexations to member agencies and the resulting change in boundaries increased the total acreage within the Authority by 3,530 acres. As of June 30, 1965, 718,900 acres or 1123.3 square miles were included within the Authority.

No new districts were annexed during the fiscal year. The entire increase in area resulted from annexations to existing member agencies. The two largest annexations were to Olivenhain Municipal Water District amounting to 2,934 acres and to Rincon del Diablo Municipal Water District consisting of 420 acres. The City of Escondido annexed 474 acres during the year, but this area was already in the Authority as a part of the Rincon del Diablo Municipal Water District and became an overlapping area. For this report, the area of the District was reduced by this amount and added to the City of Escondido. The balance of the annexations occurred in smaller tracts.

The boundaries of the Authority now encompass 26 per cent of the area within San Diego County and 79 per cent of all that area lying between the Cleveland National Forest and the Pacific Ocean as shown on Figure A.

Overlapping areas continue to exist in the Authority although efforts are being made to encourage member agencies to eliminate overlapping boundaries through appropriate action.

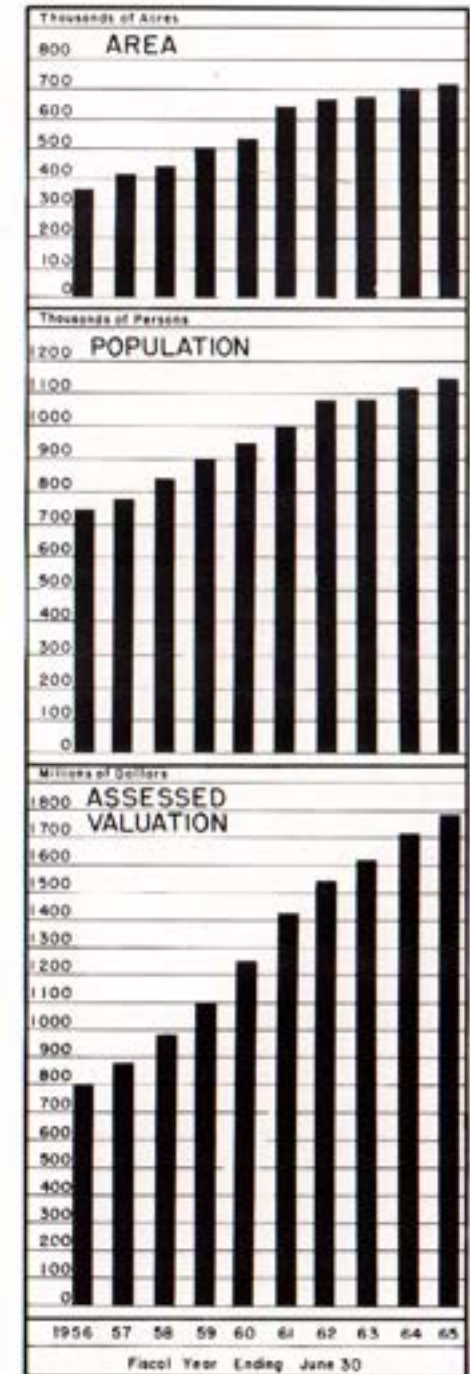
An overlapping area is land lying within the boundaries of two member agencies. The overlapping portion was originally in one agency and subsequently was annexed by the other which was better able to serve the area with water. The major overlapping areas are primarily due to the expansion of cities into areas already lying within the boundaries of the Authority.

At the present time there is a total of 15,704 acres lying within cities which overlap into adjacent districts. The Authority Act contains provisions whereby an overlapping area may be excluded from one agency, or an area may be excluded from one agency and annexed

to another by mutual consent, without the area being excluded from the Authority or the Metropolitan Water District, provided permission to do so is first obtained from the Authority.

The area within each member agency, the changes which have occurred therein during the past year, and the percentage of each agency's area to that of the entire Authority are shown in Table 1. As shown in this table, the City of San Diego continues to have the largest area, equal to 26.94 per cent of the total area within the boundaries of the Authority.

The following annexations to existing member agencies have been informally approved by the Authority Board of Directors: Rainbow No. 3 Concurrent Annexation, consisting of 10,960 acres contiguous to and lying easterly of the present district boundaries, directly south of the Riverside County line; De Luz Heights Municipal Water District, an incorporated district consisting of 10,280 acres, lying northwesterly of the Fallbrook Public Utility District; Valley Center Municipal Water District No. 2 Concurrent Annexation, consisting of two parcels with 2,600 acres contiguous to and lying easterly of Valley Center Municipal Water District.



SAN DIEGO COUNTY WATER AUTHORITY

The Authority's 1964 Statement of Change of Boundaries, under state law required to be filed by the Executive Secretary of the Board of Directors prior to January 1, 1965, was filed with the State Board of Equalization December 31, 1964, the County of San Diego December 29, 1964, and The Metropolitan Water District of Southern California December 30, 1964. As shown on the Statement, there were 41 changes made during the year, of which only 5 changed the boundaries of the Authority either by annexation or by exclusion. This Statement is the basis for determination of the assessed valuation by the Assessor of San Diego County who levies the Authority tax rate as established in August by the Authority Board of Directors.

Population

The population within the Authority area continued to grow at a steady but slightly lower rate than the average rate of growth during the last five years. The population census figures for each decade beginning in 1910, together with the estimated population for the years 1961, through 1965 are shown in Table 2. Data pertaining to individual member agencies are shown in Table 3.

The City of San Diego continues to be the most populous member agency and now contains 648,200 persons or 56.4 per cent of the total residing within the Authority. The Olivenhain District has the smallest population, but it also has the greatest percent of increase since 1960, averaging 25 per cent per year. The City of La Mesa continues to be the most densely populated area within the Authority with 7.42 persons per acre. The cities of National City and El Cajon have densities of 6.81 and 6.19, respectively. The average population per acre of the Authority has increased 4 per cent during the past five years to 1.60 persons per acre or 1,024 persons per square mile.

Assessed Valuation

The Authority maintains a record of boundary changes. A Statement of Change of Boundaries is filed annually with the Assessor of San Diego County. The Assessor determines the assessed valuation of all taxable property lying within the Authority boundaries. This assessed valuation becomes the basis for the Authority's tax levy. The Auditor of the County certified to the Authority that the assessed valuation of taxable property for the 1964-65 tax levy was \$1,788,388,770, an increase of \$78,687,870 or 4.6 per cent over 1963-64. The assessed valuation of taxable property of each member agency of the Authority is shown in Table 4. Prior to the compilation of this report,

GROWTH OF AUTHORITY

the assessed valuation for 1965-66 was received and has been included in Table 4 for convenience. This table shows that the assessed valuation of taxable property within the boundaries of the Authority increased by \$91,601,240 or 5.1 per cent. The average assessed valuation for the Authority increased from \$2,501 per acre in 1964-65 to \$2,615 per acre in 1965-66.

WATER SUPPLY AND CONSUMPTION

Water Supply and System

The San Diego County Water Authority continued to receive its entire supply of water from the Colorado River through the facilities of The Metropolitan Water District of Southern California. At the present time, the Authority has a preferential right to the District's water supply of about 8 per cent. This preferential right results from payments in the form of taxes and annexation charges paid to Metropolitan Water District. Payments for water to the District are not included in the calculation of preferential right. The Metropolitan Water District distributed water throughout the year on the basis of requirements and did not invoke preferential right as the basis for water deliveries. There were no reductions in water deliveries to the Metropolitan during the summer months of 1964 as a result of the 10% reduction in Colorado River water use as ordered by the Secretary of The Interior in the spring of 1964.

Metropolitan Water District diverts Colorado River water into the San Diego aqueduct near San Jacinto. The Water Authority accepts the delivery at a point approximately six miles inside San Diego County. The First Aqueduct has a reservoir at the northerly end where approximately 1,400 acre feet can be stored. There is no storage on the Second San Diego Aqueduct; however, Auld Valley Reservoir site, located in Southern Riverside County, is now being acquired by the Metropolitan Water District. When completed, it is anticipated that up to 36,000 acre feet of water will be stored in this Southern Riverside County reservoir located at the southerly end of the canal section which has a capacity of 1,000 cubic feet per second.

During July and August of 1964, the Authority's two aqueducts were operated at close to capacity. Capacity of the First Aqueduct is 196 c. f. s. and the Second San Diego Aqueduct has a nominal capacity of 250 c. f. s. For a short period of time during tests, the Second San Diego Aqueduct was operated over design capacity; and it is expected that after chlorination of the pipeline from the end of the canal



Laying 60 inch Prestressed Concrete Pipe

The total flow in the Authority's system was 240,679 acre feet as compared with 231,947 acre feet during the previous year. The annual flow has reached 75 percent of the maximum of 320,000 acre feet which could be delivered assuming continuous operation of both aqueducts at capacity for the entire year.

The smallest rate of flow occurred during February, 1965, during the shutdown of the Second San Diego Aqueduct which was necessary to permit installation of the diversion structure of the Cross-Connection. Minimum monthly delivery was made in January, 1965 with but 13,237 acre feet delivered. The maximum monthly delivery occurred in July of 1965 with delivery of 26,379 acre feet.

Water Deliveries and Rates

Water deliveries to all member agencies are shown in Table 5. The agencies purchased 230,857 acre feet during the year; an additional 9,794 acre feet was placed in storage, while only 26 acre feet was removed from storage. Ample aqueduct carrying capacity remains to meet member agencies' expanding requirements for several years to come.

The quantities of water delivered to individual member agencies for the eight-year period from 1957 to 1965 are shown in Table 6, together with the total quantity of water purchased by each agency since the Authority first began delivery of water in 1947. This year's sales were larger than 1963-64 by 0.5 per cent.

The Authority continues to deliver water to two governmental activities for Metropolitan Water District. These agencies are the State Forestry Camp, located east of Rainbow within the proposed Rainbow Concurrent Annexation No. 3, and the Convair Missile Testing Facility, located in Sycamore Canyon on the Camp Elliott Reservation.

to the San Diego County line, capacity may be increased. The three months of highest flow in the two aqueducts were July and August, 1964 and June, 1965 with average flows of 429, 416, and 424 c. f. s., respectively. As aqueduct flow nears capacity during the peak summer period, it will be necessary for Authority's member agencies to rely on storage to a greater and greater extent until the second barrel to the Second San Diego Aqueduct is completed.

WATER SUPPLY AND CONSUMPTION

The total quantity of water delivered under these contracts totaled 54 acre feet, compared with 63 acre feet in the previous year.

The Water Authority charge for water is the rate charged by Metropolitan Water District plus a surcharge of \$1.25 per acre foot. Prior to September 1, 1964, the surcharge was \$2.00 per acre foot. In August, 1964, the Board of Directors of the Authority adopted a resolution which reduced the rate to \$1.25 which is sufficient presently to pay all Authority costs except capital cost.

The Metropolitan Water District has continued its policy of announcing its water rates for approximately three years in advance. During recent years, Metropolitan has increased its water rates each year, and further annual increases are scheduled. A summary of County Water Authority water rates for untreated Colorado River water supplied to Authority members since July 1, 1958 follows:

SUMMARY OF WATER RATES (Dollars Per Acre Foot)

FROM	TO	MWD	AUTHORITY	TOTAL	AGRICULTURAL REBATE	RESULTING AGRICULTURAL RATE
7/1/58	1/1/61	15.00	2.00	17.00	3.00	14.00
1/1/61	1/1/62	17.00	2.00	19.00	4.25	14.75
1/1/62	1/1/63	19.00	2.00	21.00	5.50	15.50
1/1/63	1/1/64	21.00	2.00	23.00	6.75	16.25
1/1/64	7/1/64	24.00	2.00	26.00	9.00	17.00
7/1/64	9/1/64	25.00	2.00	27.00	9.75	17.25
9/1/64	7/1/65	25.00	1.25	26.25	9.75	16.50
7/1/65	7/1/66	28.00	1.25*	29.25	12.00	17.25
7/1/66	7/1/67	31.00	1.25*	32.25	14.00	18.25
7/1/67	7/1/68	34.00	1.25*	35.25	16.00	19.25
7/1/68		37.00	1.25*	38.25	18.00	20.25

*Subject to change.

In order to obtain the agricultural rebate, it is necessary for the Authority to certify to the Metropolitan Water District as to the quantities of water used for agricultural purposes. Rebates granted to the Authority by the District are paid in full to the agencies which had previously certified that such water was used for agricultural purposes.

Water Production of Member Agencies

We use the term "water production" to mean that quantity of water which an agency must produce from all its sources to meet the demands of its consumers, plus the losses which occur between the sources of supply and the consumers, including leakage, losses from breaks, evaporation from distribution reservoirs, and waste resulting from



66 inch Pipe Special for Cross-Connection

normal operations. Sources of supply may include impounding reservoirs, wells, and the Authority system.

The total water production of the twenty-one member agencies is shown in Table 7. Sixteen member agencies indicated an increase in water production over the previous year. The total increase from 231,548 acre feet to 243,893 acre feet was spread quite generally over the entire area of the Authority. Maximum monthly production occurred in July, 1964 when 30,815 acre feet of water was

required to meet the combined demand of the member agencies' consumers, an increase of 8 per cent over the previous year's maximum monthly production. Minimum monthly production occurred in January, 1965 when 11,980 acre feet of water was produced, 653 acre feet less water than was used in the minimum month of previous year. Several Authority agencies have extensive local water supplies available. In recent years, the production of local water has dropped off due to decreased local runoff into reservoirs and reduced pumping of ground water.

The wells in Pauma Valley produced 9,072 acre feet of water for the several agencies within the Yuima District. The Lake Henshaw system and the Warner Ranch wells owned by the Vista Irrigation District, a sub-agency of Bueno Colorado Municipal Water District, produced 6,660 acre feet for distribution within Bueno Colorado Municipal Water District, Rincon Municipal Water District, and the City of Escondido. California Water and Telephone Company produced approximately 2,700 acre feet of local water within its service area which includes National City and South Bay Irrigation District. The most extensive reservoir system within San Diego County Water Authority is owned by the City of San Diego. The City system produced 4,922 acre feet of local water during the year, all of which was delivered for use in areas outside of the Authority. Detailed statistics on water production are in Table 8.

A comparison of water production by the member agencies can be found in Table 9. This table lists water production based on area and

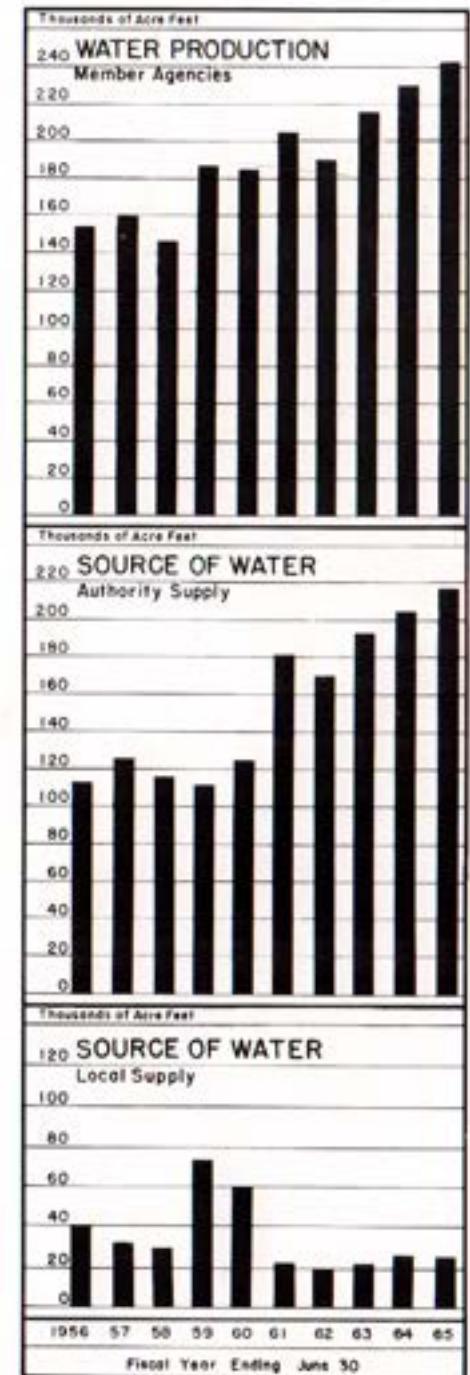
WATER SUPPLY AND CONSUMPTION

population in acre feet per acre per year, and acre feet per capita per year. The water systems of member agencies are serving 300,450 acres out of the 718,900 acres or 42 per cent of the total area of the County Water Authority.

Volume of water used per year per unit area varies a great deal depending on the state of development, type of soil, type of crop, and on other variables. The Yuima Municipal Water District is an intensively irrigated agricultural district and reports water requirement of 2.81 acre feet per acre. Fallbrook Public Utility District reports 1.41 acre feet per acre while the relatively undeveloped areas of Olivenhain Municipal Water District and Ramona Municipal Water District report 0.12 and 0.13 of an acre foot per acre, respectively. The Authority average is 0.8 of an acre foot per acre on the 300,450 acres served.

Per capita water use within the Authority increased to .21 of an acre foot per year. Yuima Municipal Water District reports 12.38 acre feet per capita based on a population of 750 persons.

Figure B shows the combined water production of the Authority member agencies and compares production with available local supply.



The columns which represent annual production have been shaded to differentiate between water obtained from local sources and that which has been supplied by the Water Authority from the Colorado River. The chart shows the expanding use of Authority water and the decreasing local supply. Projections of future production of water have been made based on the assumption that additional water will be available when needed. The staff of the Authority has predicted that additional aqueduct facilities will be required to serve the Authority by the year 1970. A report on file at the Authority office dated February, 1965 entitled "Timing of Construction and Sizing of the Second Barrel of the Second San Diego Aqueduct" provides detailed statistics from which these projections have been made.

Agricultural Water Use

Agricultural water use amounted to 33.6 per cent of the total of 243,893 acre feet produced by Authority agencies. The Metropolitan Water District allows a rebate for water used for agriculture. A rebate of \$9.75 per acre foot during the fiscal year justified extensive record keeping and reporting by member agencies. In order to obtain the rebate, each agency must certify to the Authority with substantiating data as to the total quantity of water used for agricultural purposes. Table 10 shows quantities of water used in agriculture. This year's report shows that Yuima Municipal Water District had the highest percentage of agricultural water use at 97.9 per cent.

Authority Facilities

The Authority system consists of the following facilities: The two San Diego Aqueducts south of Metropolitan's delivery point which is approximately six miles south of the Riverside County line; a portion of the Fallbrook-Oceanside Branch, extending southwestwardly from the First San Diego Aqueduct at Rainbow; and the La Mesa-Sweetwater Branch Line, extending from the First Aqueduct at Slaughterhouse Canyon through Lakeside to a terminal point at Sweetwater Reservoir. During the year, the Water Authority completed eight miles of 66" diameter prestressed concrete pipe, running southeasterly from the Second Aqueduct in Twin Oaks Valley to a point on the First Aqueduct just north of the City of Escondido. Treatment facilities are provided in a chlorination station in Rainbow Pass just north of the North San Diego County line where flows in both aqueducts are chlorinated.

The Authority has no storage facilities of its own. It does, however, have a contractual right to store up to 30,000 acre feet of water in San Vicente Reservoir. The privilege results from an agreement with the City of San Diego which expires October 31, 1969. Under

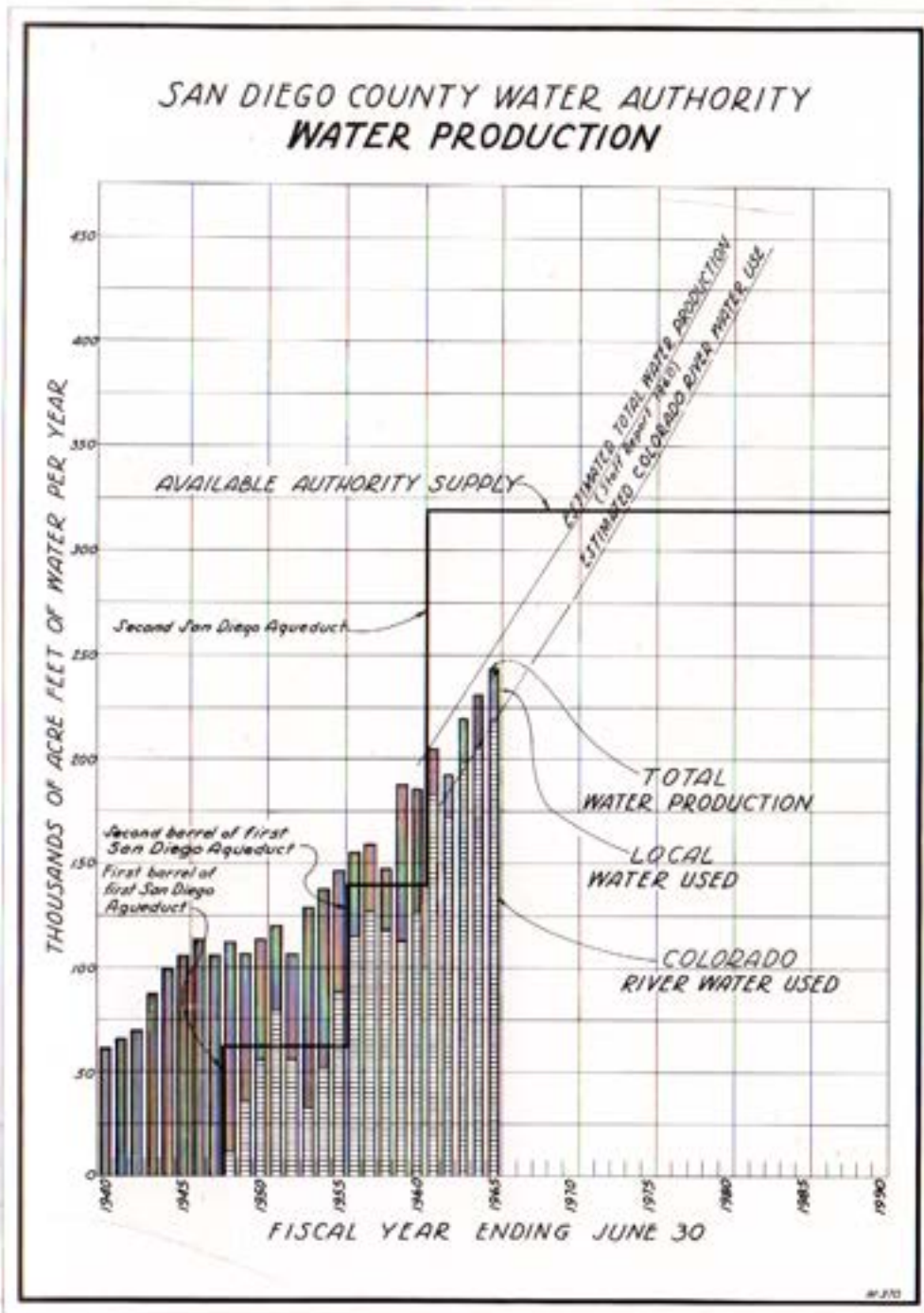


Figure B. Water Production of Authority Member Agencies

SAN DIEGO COUNTY WATER AUTHORITY

this agreement, the City charges \$2.20 per acre foot for the maximum amount of water in storage each year, plus fifty cents per acre foot to cover pumping charges for any water transferred from storage to the City. Under the agreement the first water of any water which might be lost over the spillway would be that stored by the Authority. During the low-demand months, a total of 9,771 acre feet of water was placed in San Vicente Reservoir by the Authority for the accounts of its member agencies. Only 26 acre feet was withdrawn, and 1,093 acre feet was lost by evaporation. The net result of the year's activities was an increase of 8,652 acre feet to 26,291 acre feet in storage on June 30, 1965. Storage statistics are shown in Table 11. The Rainbow and Valley Center Districts had the largest amount credited to their accounts, totaling 5,000 acre feet for each or about 19 per cent of all Authority water stored in San Vicente Reservoir. In October, 1964, the agreement for storage in San Vicente Reservoir was renewed on the same terms and conditions for an additional five years.

The Authority also has an agreement with the City of San Diego which permits it to store up to 2,500 acre feet of water in the City's Lower Otay Reservoir, which is the terminus of the Second San Diego Aqueduct. This storage is for operational purposes only, and the water is transferred to the City of San Diego when water is requested by the City at this location. Storage capacity for member agencies is not provided at Lower Otay Reservoir. The City of San Diego makes a charge of \$1.00 per acre foot for the maximum amount of storage in any 12-month period or part thereof with a minimum annual charge of \$1,000 for use of the reservoir. In addition, there are pumping charges which vary from \$2.25 to \$1.50, depending on the elevation of the water in the reservoir.

The water level in the Lower Otay Reservoir remained at a point below the bottom outlet during the year. The City of San Diego prefers to take direct deliveries of water at Otay from the aqueduct at a rate of flow determined by their treatment plant requirements. The City prefers not to have water delivered into the lake. For this reason, very close control is exercised by the Authority personnel in order to prevent spillage from the aqueduct into the Reservoir.

Water Quality

Chemical constituents of dissolved solids in the aqueduct water are shown in Tables 12 and 16. The breakdown is based on analyses of water delivered to the aqueducts at San Jacinto as made by the laboratory of the Metropolitan Water District at the La Verne treatment plant. Variation in total hardness ranged from a high of 373 p. p. m. to a low of 334 p. p. m. Hardness is reported as p. p. m. equivalent of

WATER SUPPLY AND CONSUMPTION

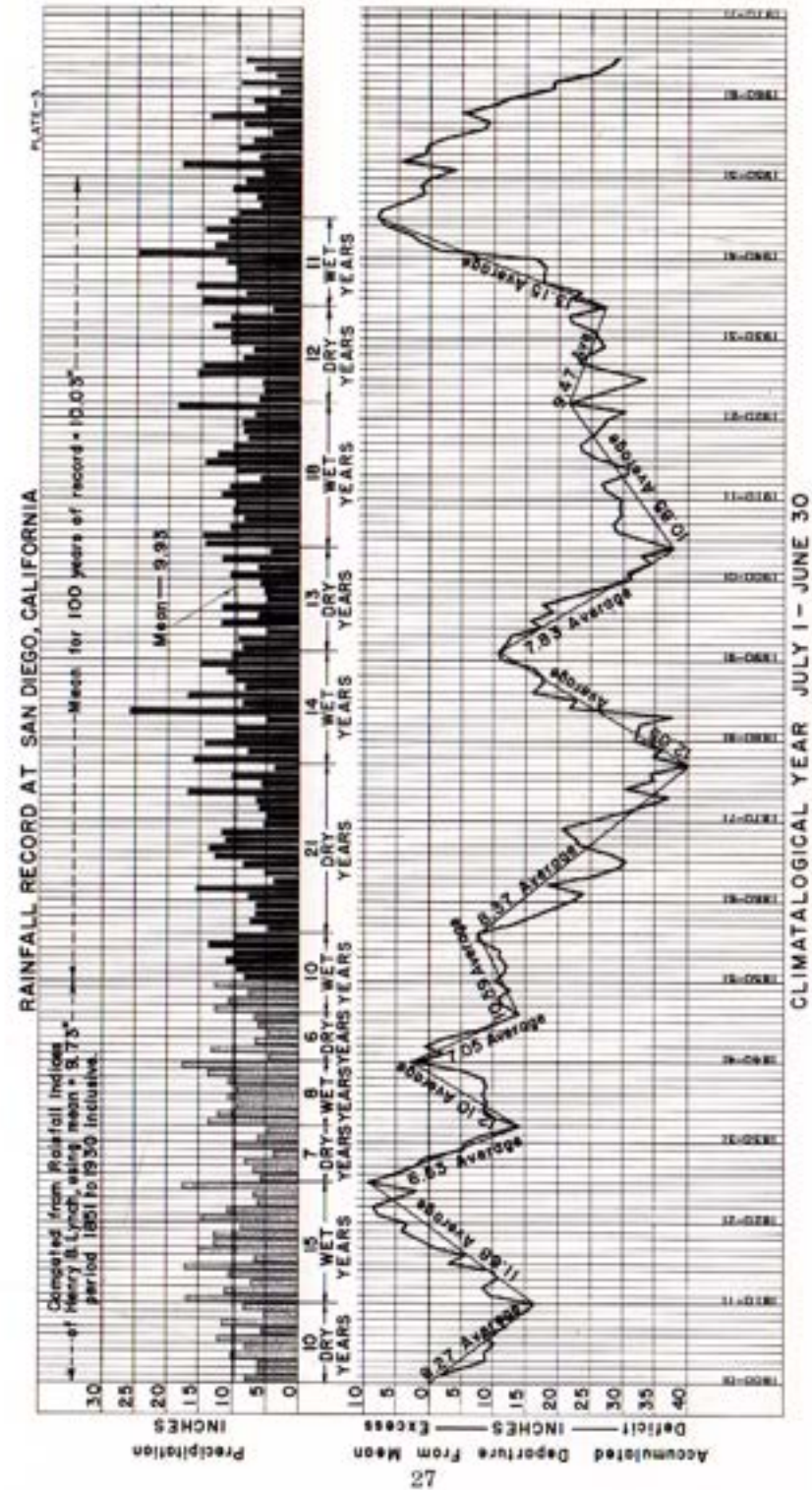


Figure C. Rainfall Record at San Diego, California

SAN DIEGO COUNTY WATER AUTHORITY

calcium carbonate. Water temperatures varied from a low of 50° F. recorded in January, 1965 to a high of 79° F. reported in July, 1964.

Chlorination

Throughout the year, Authority water continued to meet or exceed the minimum bacteriological quality standards as set forth in the United States Public Health Service Drinking Water Standards of 1962. Most agencies within the Authority complete their treatment of water by simple chlorination.

Several member agencies have large agricultural developments which are based on the use of irrigation water obtained from the Authority. The State Health Department has continued to recognize that Colorado River water supplied by the Authority meets drinking water standards after sterilization with chlorine. Current practice is to require dual chlorination with a time interval of at least one-half hour between the two points of application.

Over a period of years, the Authority has followed a program of control of bacterial growth on aqueduct walls by slugging with chlorine. In the past, chlorine was applied twice weekly for four-hour periods. During 1963 and 1964, experiments indicated that the equipment operated by the Authority was suitable for continuous application of chlorine and that the advantages of continuous chlorination were worth the added cost. A continuous chlorination program was approved prior to the

current year, and funds were provided in the 1964-65 budget for this purpose. The continuous chlorination program has proved successful and has resulted in fewer service problems. The rate of application of chlorine by the Authority ranged from 0.75 p. p. m. to 2.0 p. p. m., depending upon chlorine demand, temperature of the water, and other variables. The chlorination station is located in Rainbow Pass and serves all three barrels of the First and Second aqueducts.

*Special Tee Inside Meter
Structure of Cross-connection*

WATER SUPPLY AND CONSUMPTION

Allocation of Water Among Member Agencies

The Authority Act (Sec. 5.11) provides the method by which the water supply of the Authority must be divided among its member agencies if the total demands for water should exceed the capacity of the Authority's aqueducts.

The quantity of water to which an agency has preferential right is that portion of the available Authority water supply which bears the same relation to the whole as the total of all payments paid to the Authority by the agency, exclusive of payments for water, bears to the total of such payments received from all agencies.

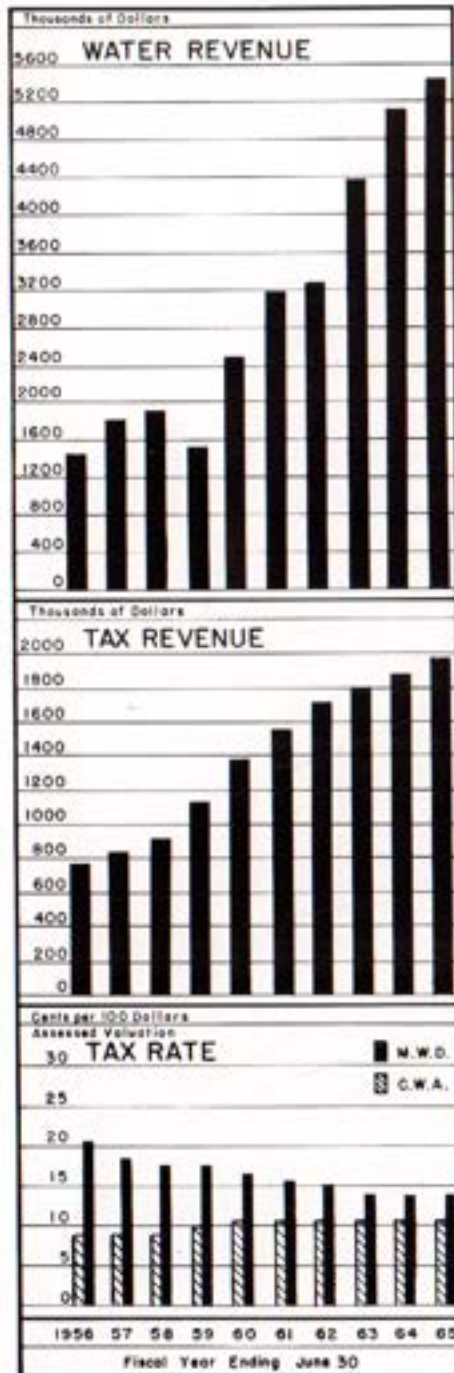
Allocation by preferential right will be invoked only when the combined demand for water exceeds the capacity of the Authority to deliver and agreement cannot otherwise be reached. When water and capacity are available, agencies may purchase water without limit.

Before construction of the Second San Diego Aqueduct, demand exceeded system capacity on several occasions; however, voluntary agreement between member agencies and the Authority permitted operation without resort to the provisions of Section 5.11 of the Authority Act. The percentage allocations in effect as of June 30, 1965, and the corresponding flows available from the present aqueduct system are shown in Table 13.

Future Supplies

The Water Authority obtains all its water from The Metropolitan Water District of Southern California. At the present time all of the water comes from the Colorado River by way of the Colorado River aqueduct. The Metropolitan Water District Board has adopted a statement of policy, frequently repeated over many years, that when additional water or distribution facilities are needed to meet demands of its member agencies, additional water and facilities will be made available.

The first major step to obtain additional water was undertaken on November 4, 1960, when the District entered into a contract with the State of California for 1,500,000 acre feet of water from the State aqueduct system (Feather River Project). State Project water has been scheduled for delivery to Southern California by the year 1971, and current reports state that all the construction is on schedule or ahead of schedule.



As a result of the U.S. Supreme Court's decision in the Case of "Arizona vs. California", less water may be available to the District annually than the 1,212,000 acre feet that the Colorado River Aqueduct is capable of bringing into Southern California. For this reason, the Metropolitan Water District's contract with the State of California has been amended to increase Metropolitan Water District's quantity of State Project water from 1,500,000 to 2,000,000 acre feet per year.

Responsible forecasts indicate that the remaining Colorado River entitlement, together with State Project water, will meet the growing requirements of the Metropolitan Water District's member agencies until the year 1990. During this period of time, the population of the District is expected to increase from the present 10 million to about 20 million.

For the period beyond 1990, when additional supplies are required, many plans have been proposed which call for development of projects on the undeveloped rivers in Northern California, the Columbia River, and perhaps in Canada. These many proposals, together with sea water desalting, are being investigated by the Water Authority, the Metropolitan Water District, the State of California, and the Federal Government.

Figure B shows the increase in water requirements within the Authority since 1940. Studies indicate that additional aqueduct capacity may be required by the year 1970, by which time it will be necessary to have completed the Second Barrel of the Second San Diego Aqueduct.

Metropolitan Water District has indicated in Report 818 that additional Metropolitan Water District facilities named "The Inland Feeder System" will be required to make State Project water available to the Authority from Perris Reservoir. Accordingly, engineering work has been undertaken to determine the alignment of the new works, right of way requirements, and the development of plans and specifications for the necessary facilities.

In June, 1965, the Water Authority entered into an agreement with the Metropolitan Water District to provide engineering services for two features of the Inland Feeder System which will bring water to San Diego County. This cooperative effort is expected to result in completion of these needed facilities by 1970.

OPERATION AND MAINTENANCE

Maintenance Headquarters

The Authority operates its aqueducts from a maintenance center located at 660 West Fifth Avenue in Escondido. The Superintendent, Mr. Joseph E. Lester, performs all operational activities and all maintenance functions from this location with a total of ten employees. Operation of the aqueducts which serve our many agencies, some with very small reservoir capacity, requires that system operators be on call twenty-four hours every day. The Superintendent resides in a company-owned house at the Escondido operation center. Telephone and two-way radio provide up-to-date communication.

Patrol

The Authority aqueducts and related facilities require routine patrol to cope with vandalism, watch for leaks, and observe structures, gates, culverts, and access roads. During the past year, Authority employees traveled 160,000 miles while operating the system.



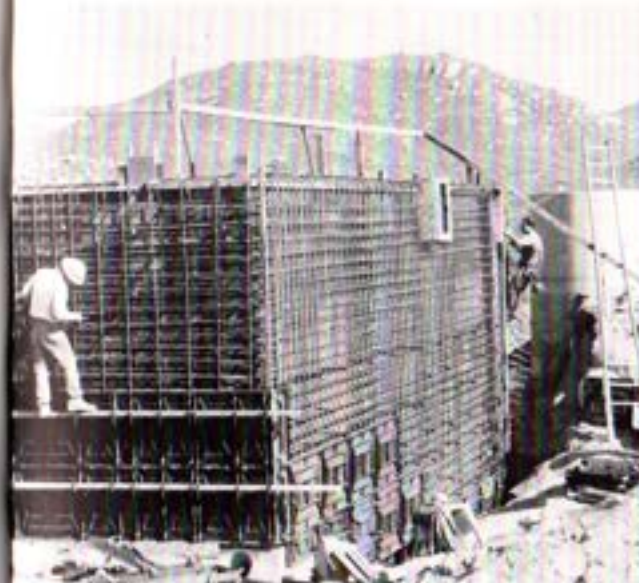
Member Agencies' Group Inspecting Cross-Connection

In addition to patrol vehicles, the field forces are provided with a variety of equipment, including road graders, bulldozers, compressors, welders, and a well-equipped shop. Skilled Authority personnel perform many varied tasks, including carpentry, painting, electrical, road building, construction, and mechanical repair work.

Operating personnel and maintenance crews are dispatched by two-way radio. Base stations are maintained in San Diego and Escondido with a repeater station located on Palomar Mountain. The Authority maintains 9 mobile units in operation, maintenance, and construction.

CROSS-CONNECTION PROJECT

During 1964-65, the Cross-Connection project was completed on schedule and within the cost estimates. The contractor, Einer Brothers, Inc. of Escondido, California, completed the 40,000 feet of 66" diameter pipeline for the total price of \$2,311,852. The final price was but \$26,968 above the bid which was based on unit prices based on estimated quantities. Strict adherence to the original plans and specifications and issuance of only one change order kept the final cost to within the estimate. J. Putnam Henck completed the two



SAN DIEGO COUNTY WATER AUTHORITY

structures at the ends of the pipeline for \$159,018, just \$230 above the lump sum bid.

This important addition to the Authority's system accomplishes several important functions. It adds necessary flexibility to the system. It increases the reliability of service. It increases the capacity of the system as a whole. It will further increase capacity of the Authority system by an additional 130 c.f.s. at the time of completion of the Second Barrel of the Second San Diego Aqueduct. Flow adjustments through the Cross-Connection can be made from the Escondido headquarters by use of remote telemetering and supervisory control equipment.

The prestressed concrete pipe with rubber gasket joints which was installed under this contract has proved to be an excellent product. After filling for testing, water loss amounted to but 51 gallons in 24 hours for the entire 40,000 feet of pipe. This rate of loss was only 1.1 per cent of the amount permitted by the specifications.

Project field quarters were established at the Escondido field office under the direction of Mr. Lee D. Purdin, Project Construction Engineer. The design section was established in the San Diego office under the direction of Mr. Robert H. Wilken, Design Engineer. Mr. Robert Alexander, Assistant Civil Engineer, was in charge of the field surveys.

SERVICE CONNECTIONS

As of July 1, 1965, there were 50 service connections on the Authority's system, ranging in capacity from 2 to 180 c.f.s. Flows are regulated by control valves operated by Authority personnel as requested by the agencies.

Yuima No. 1 Service Connection

Yuima No. 1 Service Connection

This service connection located on the First San Diego Aqueduct about four miles south of the San Luis Rey River was completed during November 1964. It being the first service connection for the Yuima Municipal Water District, part of the cost was paid by the Authority.

An 18-inch nozzle was inserted in the pipeline for this connection, which consists of a 14" x 7.9" Venturi tube, activating a Builder's Type M totalizer-indicator-recorder meter instrument having a capacity of 14 c.f.s. Flows are controlled by a 14" Butterfly valve, motor operated, with automatic controls to maintain a constant flow. Provision was made for future installation of a 10-inch meter with a capacity of 7 c.f.s.



Interior View of Yuima Service Connection

Valley Center Municipal Water District No. 5 Service Connection

The fifth service connection to serve the Valley Center Municipal Water District was designed and drawings were completed, but no construction was started by the end of the fiscal year.

City of Escondido No. 2 Service Connection

The City of Escondido requested a second service connection, and preliminary design work on this project was in progress at the end of the fiscal year.

LEGAL DEPARTMENT ACTIVITIES

The Authority does not maintain a full-time staffed legal department. Its legal work is handled by a part-time counsel



under retainer who has been authorized, when the circumstances made it advisable, to engage special counsel to conduct specific litigation, as for example the prosecution of condemnation proceedings. The position of general counsel, provided for in the County Water Authority Act, has been filled by two specialists in the water law field: Mr. Phil D. Swing, 1944-1948; and Mr. William H. Jennings, 1948 to present, each of whom participated in the preparation of the Authority Act and in the proceedings for its formation.

The function of the general counsel in part provided for in the Act and more specifically in the Administrative Code, is to furnish legal advice and counsel to the Board of Directors, its officers and committees and the members of the Authority staff. Counsel must attend all Board and committee meetings, prepare resolutions and policy statements as instructed by the Board. He must supervise the proceedings for Authority elections, the authorization, printing, issuance and sale of bonds, the procedures for calling for bids and awarding construction contracts. Authority insurance policies and the official bonds of its officers and staff must be approved by him as to form and execution. Securities furnished the Treasurer to guarantee the safety of bank deposits must be submitted to him to determine their eligibility for such purpose. He is required to prepare such legislation as the Directors may elect to have adopted, pass upon the credentials of all newly appointed or reappointed Directors and prepare and approve deeds and grants of easements for property acquisitions.

Counsel is expected to keep abreast of pending legislation, State and National, and to keep the Directors fully informed in respect thereto. He may be called upon to prepare statements for presentation to legislative committees and to present them and make appearances before such committees if requested to do so.

An essential function of the counsel is to supervise all annexation procedures, the preparation of boundary statements, the annual tax levying procedure and, in fact, any and all procedures and activities of the Authority where precise legal requirements are involved.

To properly perform the functions of his office, counsel must remain alert at all times to changes in the laws affecting the administration and responsibilities of public agencies and water purveyors of all kinds. Such changes may result from either legislation or judicial decisions and require continued contact with the legal departments of other public agencies and water purveyors. A source of such contacts is active participation in the Attorneys' Committee of the California

Irrigation Districts Association, the attorneys representing the members of the Colorado River Board, the legal departments of the Department of Water Resources, the Attorney General's office, the Metropolitan Water District and, of course, close liaison with the attorneys and legal departments of the Authority's member agencies.

In the more than twenty years of the Authority's existence, its legal procedures have never been challenged, nor has it been involved in any litigation other than a few minor condemnations for right of way acquisitions. It is the responsibility of the general counsel to maintain this desirable record.

MEMBERSHIP IN THE METROPOLITAN WATER DISTRICT OF SOUTHERN CALIFORNIA

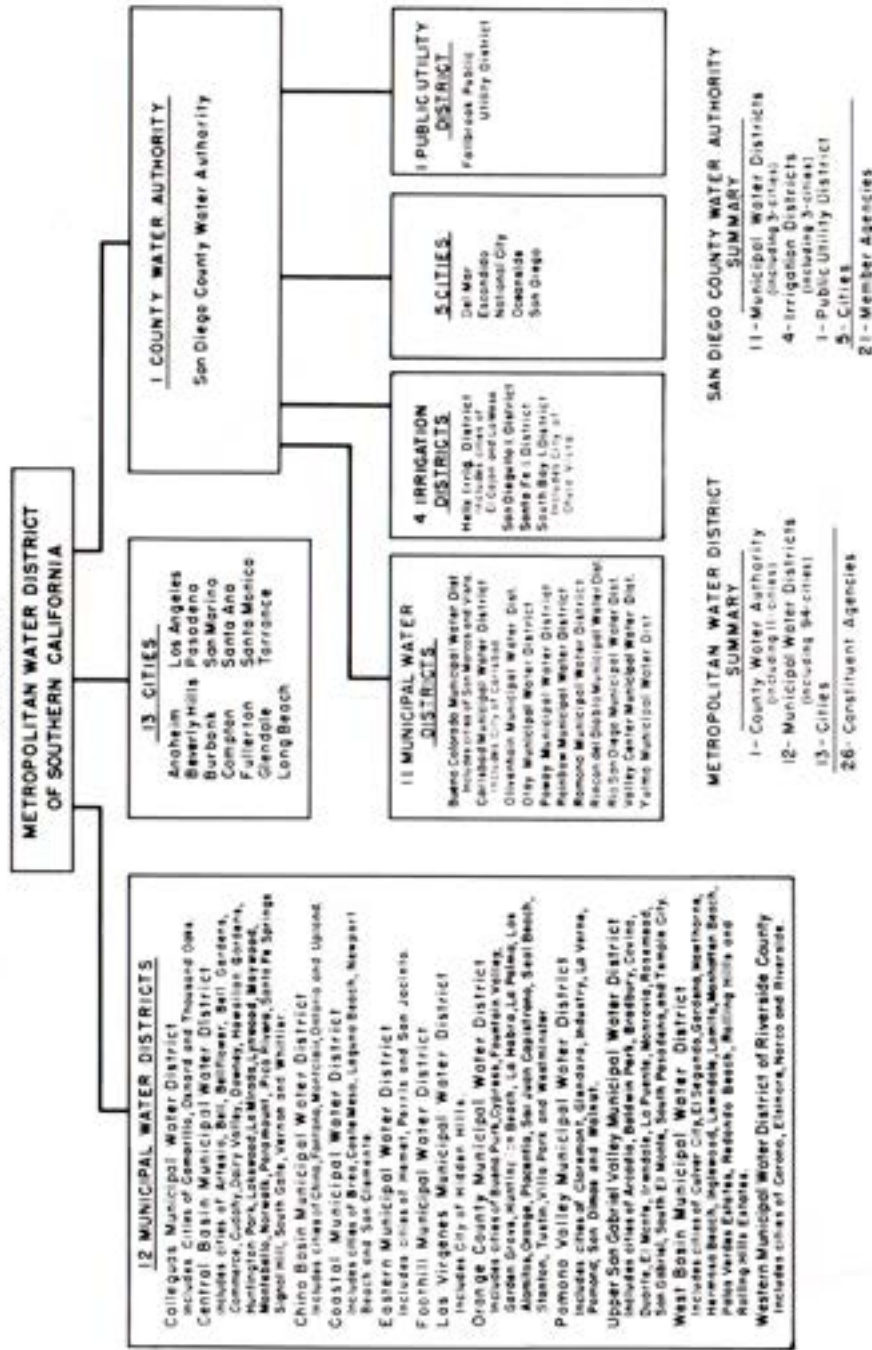
The Authority receives its entire supply of water from The Metropolitan Water District of Southern California and works very closely with that District. A brief outline of the District's organization and operations may be of interest to readers of this report.

The Metropolitan Water District was organized in 1928 under the then newly-enacted Metropolitan Water District Act. The Act originally permitted annexation of cities only. Later, the Metropolitan Act was amended to allow inclusion of districts. The Metropolitan and Authority Acts are quite similar.

The District is governed by a Board of Directors. Each Director represents a constituent member agency. A member agency is entitled to one Director on the Metropolitan Board of Directors plus one additional Director for each \$500 million of assessed valuation. Some agencies have a large number of Directors serving on the District Board while other agencies have but one. As shown on Figure D, the District is comprised of 26 member agencies.

As of June 30, 1965, the Authority had three representatives serving on the District Board of Directors. Mr. Fred A. Heilbron, Chairman of the Authority Board of Directors, serves as Secretary of the Metropolitan Water District Board of Directors, having held this office since 1951. He is also a member of the Executive Committee, the Engineering and Operations Committee, and the Water Problems Committee. Mr. Hans H. Doe, Secretary of the Authority Board of Directors, is a member of the Operations and Personnel Committee and the Lands and Rights of Way Committee. He has served on the Board of Metropolitan for the past six years. Mr. Harry Griffen,

COMPOSITION OF THE METROPOLITAN WATER DISTRICT OF SOUTHERN CALIFORNIA
JUNE 30, 1965



MEMBERSHIP IN THE METROPOLITAN WATER DISTRICT

Authority Treasurer, was appointed to the District Board in January of 1963. Director Griffen is a member of the Finance and Insurance Committee and the Lands and Rights of Way Committee.

As of June 30, 1965, the Authority had a total of 179 votes out of 1,775 or 10.1 per cent of the total. When Board action is taken, the votes of an agency are cast as a unit in accordance with the majority vote of that agency's representatives present.

Constituent Member Agencies and Area

As shown on Figure D, the District is comprised of 26 member agencies, consisting of 13 original cities, one county water authority, and 12 municipal water districts. Portions of Ventura, Los Angeles, Orange, Riverside, San Bernardino, and San Diego Counties are served water by the Metropolitan Water District. Within these districts there is a total of 118 incorporated cities. During the year, 56,838 acres were annexed to the District, of which 3,530 acres or 6 per cent were also annexed to the Authority. As of June 30, 1965, District area equaled 4,503 square miles (2,882,144 acres), of which 1,123 square miles (718,900 acres) or 24.9 per cent lie within the boundaries of the Water Authority.

Assessed Valuation

The assessed valuation of taxable property lying within the boundaries of the District as determined by the assessors of the several counties for use in levying taxes for fiscal year 1964-65 is \$17,757,246,740, an increase of \$495,834,345 or 2.9 per cent over the assessed valuation of \$17,261,412,395 for the 1963-64 fiscal year. An amount of \$78,687,870 or 15.9 per cent of this increase occurred with the boundaries of the Authority.

Water Sales

A total of 1,116,619 acre feet of water was delivered by the District during fiscal year 1964-65. Of this amount, a total of 241,624

Figure D. Composition of the Metropolitan Water District of Southern California

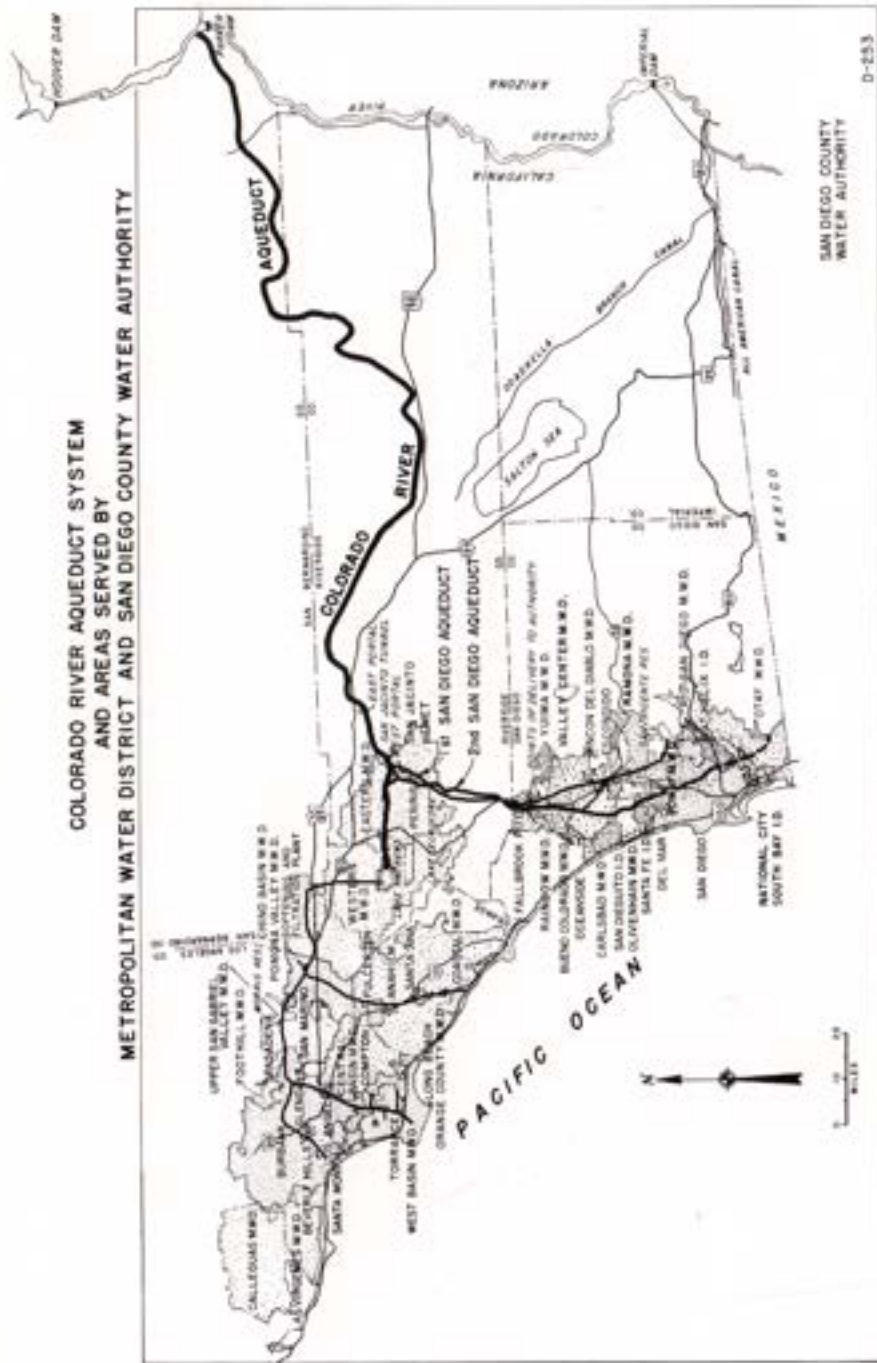


Figure E. Water Systems of Metropolitan Water District and San Diego County Water Authority

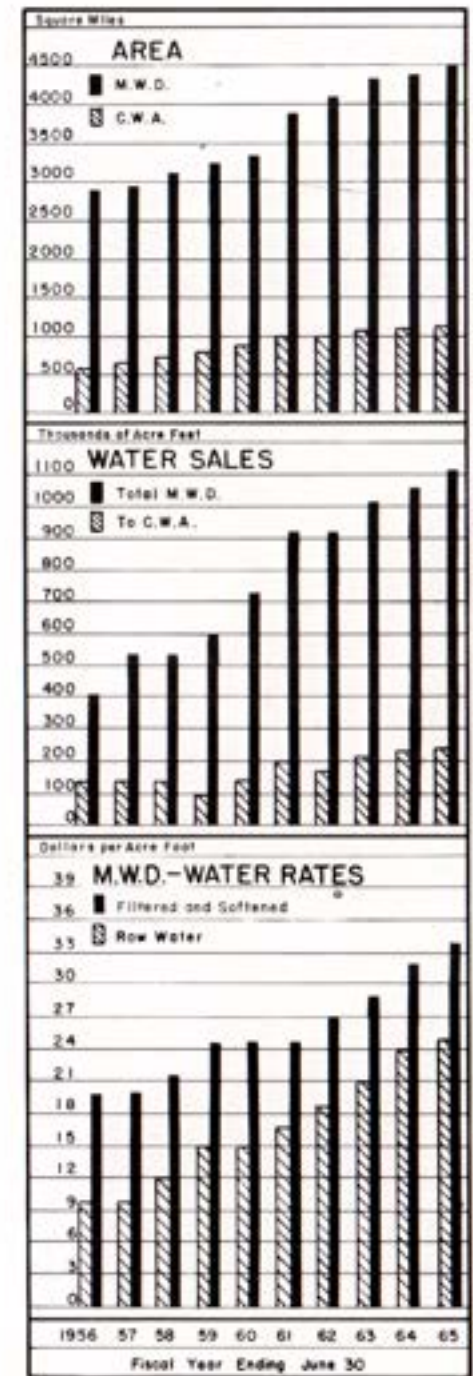
acre feet or 21.6 per cent was delivered to the Authority. All water delivered to the Authority is untreated Colorado River water. The District operates a filtration and softening plant at La Verne, California, with a capacity of 400 million gallons per day and the recently completed Robert B. Diemer Filtration Plant in Orange County, which has a capacity of 200 million gallons per day. Provision has been made to double the Diemer plant capacity in the future. The Authority cannot be served from either of these plants.

For a breakdown of the Metropolitan Water District deliveries of water to its member agencies, see Table 15.

Tax Rate

The District maintained its tax rate of 14¢/\$100 of assessed valuation for 1964-65. In 1946 when the Authority annexed to the District, the tax rate was 50¢/\$100. During the past 19 years, progressive reductions in the tax rate have totaled 36 cents.

The tax rate for each year of operation is shown



in Table 17. The total District tax levy including regular and special taxes in 1964-65 was approximately \$33,408,000, of which \$3,170,000 or 9.5 per cent was levied against taxable property within the boundaries of the Authority. When the annexation fee is not paid in full in cash at the time of annexation, the Metropolitan Water District, by agreement, levies a special tax each year for 30 years to yield the total agreed upon annexation fee in substantially equal installments. As of June 30, 1965, member agencies of the Authority had assumed back-tax liability totaling \$21,344,329, of which a total of \$10,081,255 had been paid by June 30, 1965.

	Page
APPENDIX A - STATISTICAL TABLES	
1. Area - Authority Member Agencies	44
2. Population Growth - County and Authority Area	45
3. Population - Authority Member Agencies and County	46
4. Assessed Valuations - Authority Member Agencies and County	47
5. Sales of Colorado River Water - Fiscal Year 1964-65	48
6. Water Sales - 1947 to 1965	50
7. Water Production Within Authority Agencies - Fiscal Years 1955-56 to 1964-65	51
8. Water Production of Authority Agencies - Fiscal Year 1964-65	52
9. Unit Water Production - Per Acre and Per Capita 1964-65	53
10. Agricultural Use of Water - Fiscal Year 1964-65	54
11. Authority Storage in San Vicente Reservoir	55
12. Chemical Character of Natural Colorado River Water at West Portal of San Jacinto Tunnel	56
13. Allocation of Right to Purchase Authority Water	57
14. Water Sales by Metropolitan Water District	58
15. Water Production - Metropolitan Water District Constituent Areas	59
16. Analysis of Colorado River Aqueduct Water Taken at West Portal of San Jacinto Tunnel	60
17. Assessed Valuations and Tax Rates of The Metropolitan Water District of Southern California	61
APPENDIX B - FINANCIAL REPORT	
Letter of Transmittal	62
Auditor's Report	63
Exhibit A. Balance Sheet	64
Exhibit B. Statement of Changes in Surplus and Reserves	66
Exhibit C. Statement of Revenue and Expense	68
Notes to Financial Statements	69
Schedule 1. Statement of Operating Expense	70
Schedule 2. Statement of Revenue - Estimated and Actual	71
Schedule 3. Statement of Appropriations and Expenditures	72
Schedule 4. Summary Statement of Cash Receipts and Disbursements	74
Schedule 5. Statement of Investments	75
Schedule 6. Statement of Bonds Payable	76
Table F-1. Tax Assessments and Collections	78
Table F-2. Assessed Valuations and Tax Rates	79
Table F-3. Tax Levies and Tax Collections	80
Table F-4. Legal Debt Margin	81
Table F-5. Metropolitan Water District Annexation Charges, Assessments and Balances on Authority Areas	82
Table F-6. San Diego County Water Authority Annexation Charges, Assessments and Balances	84

SAN DIEGO COUNTY WATER AUTHORITY

Table 1

AREA - AUTHORITY MEMBER AGENCIES

Member Agencies	Area Within Authority			Percent of Total Authority Area 6/30/65
	As of 6/30/64	Changes During Year	As of 6/30/65	
	acres	acres	acres	
Bueno Colorado M. W. D.	48,974	0	(3) 48,974	6.81
In City of San Marcos	(6,297)	(+ 47)	(6,344)	(0.88)
In City of Vista	(7,262)	(+ 42)	(7,304)	(1.02)
Carlshad M. W. D.	20,621	0	(4) 20,621	2.87
In City of Carlshad	(1) (6,722)	(+ 11)	(6,733)	(0.94)
Del Mar, City of	1,082	0	1,082	0.15
Escondido, City of	6,877	+ 474	7,351	1.02
Fallbrook Public Utility District	15,469	0	15,469	2.15
Helix Irrigation District	31,185	0	(5) 31,185	4.34
In City of El Cajon	(1) (6,403)	(+ 604)	(7,007)	(0.99)
In City of La Mesa	(4,838)	(+ 26)	(4,864)	(0.66)
National City, City of	5,107	0	5,107	0.71
Oceanside, City of	20,651	0	20,651	2.87
Olivinha M. W. D.	24,265	+2,934	(11) 27,199	3.78
Otay M. W. D.	64,612	0	(6) 64,612	8.99
Poway M. W. D.	22,980	0	22,980	3.20
Rainbow M. W. D.	40,093	0	(7) 40,093	5.58
Ramona M. W. D.	41,365	0	41,365	5.75
Rincon del Diablo M. W. D.	21,533	(2) - 55	(8) 21,478	2.99
Rio San Diego M. W. D.	54,105	0	54,105	7.53
San Diego, City of	(1) 193,609	+ 77	193,686	26.94
San Dieguito Irrigation District	4,929	0	4,929	0.69
Santa Fe Irrigation District	10,141	0	(9) 10,141	1.41
South Bay Irrigation District	15,862	+ 100	(10) 15,962	2.22
In City of Chula Vista	(1) (9,254)	(+ 70)	(9,324)	(1.30)
Valley Center M. W. D.	59,510	0	59,510	8.28
Yuma M. W. D.	12,400	0	12,400	1.72
Total Authority Area	713,370	+3,520	718,900	100.00
San Diego County			2,725,100	

- (1) Revised to conform with data received from agency.
- (2) Includes area annexed by an adjacent city member agency but still in district, being an overlapping area and considered here as being part of the city.
- (3) Does not include 2,608 acres overlapping in City of Oceanside, and 254 acres overlapping in City of Escondido.
- (4) Does not include 217 acres overlapping in City of Oceanside.
- (5) Does not include 3 acres overlapping in City of San Diego.
- (6) Does not include 6,747 acres overlapping in City of San Diego.
- (7) Does not include 160 acres overlapping in City of Oceanside.
- (8) Does not include 5,134 acres overlapping in City of Escondido and 1 acre overlapping in City of San Diego.
- (9) Does not include 3 acres overlapping in City of San Diego.
- (10) Does not include 217 acres overlapping in City of San Diego, and 325 acres overlapping in City of National City.
- (11) Does not include 5 acres overlapping in City of San Diego.

TABLES

Table 2

POPULATION GROWTH - COUNTY AND AUTHORITY AREA

1910 to 1965

(Includes Resident Military Personnel)

Year (as of April 1)	COUNTY		AUTHORITY		Percent of County Population in Authority
	Total Population (1)	Average Annual Growth	Total Population	Average Annual Growth	
1910	61,665				
		5,038			
1920	112,248				
		9,741			
1930	209,659				
		7,969			
1940	289,348				
1946 (3)	502,804	26,746	(3) 440,659		88
1950	556,808		(2) 451,886	2,807	81
1960	1,003,520		(2) 956,400	50,451	95
		108,080		69,100	
1961	(4) 1,111,600		(5) 1,015,500		91
1962	(4) 1,167,700		(5) 1,085,000	69,500	93
		3,600		5,200	
1963	(4) 1,164,100		(5) 1,090,200		94
		13,600		34,800	
1964	(4) 1,177,700		(5) 1,125,000		96
		16,300		25,000	
1965	(4) 1,194,000		(5) 1,150,000		96

- (1) County population from U. S. Census Bureau Reports.
- (2) Authority population based on U. S. Census Bureau Reports.
- (3) Based on Special Census, U. S. Census Bureau, exclusive of emergency military personnel due to World War II.
- (4) Estimated by San Diego Chamber of Commerce.
- (5) Estimated by Authority member agencies.

Table 3
POPULATION - AUTHORITY MEMBER AGENCIES AND COUNTY
(Includes Resident Military Personnel)

Member Agencies	Population - U. S. Census						Density of Population 1965 Per Acres Per Sq. Mile
	Area 6/30/65		1960		1950		
	Acres	(1)	(1)	(2)	(1)	(2)	
Bueno Colorado M. W. D.	48,974	---	31,560	---	35,500	0	0.70
In City of San Marcos	(5,344)	---	---	---	(3,000)	--	7.47
In City of Vista	(7,304)	---	---	---	(19,700)	--	2.70
Carlsbad M. W. D.	20,621	---	10,600	---	12,600	4	0.58
In City of Carlsbad	(8,733)	---	(9,400)	---	(11,500)	5	1.77
Del Mar, City of	1,082	---	---	---	3,800	--	3.51
Escondido, City of	7,351	6,600	18,300	180	26,300	8	3.35
Fallbrook Public Utility District	15,469	5,500	10,600	82	10,600	1	0.69
Helix Irrigation District	31,155	44,160	122,100	176	160,400	5	4.82
In City of El Cajon	(7,057)	(5,600)	(37,300)	566	(43,900)	4	6.19
In City of La Mesa	(4,864)	(10,940)	(39,900)	173	(36,100)	4	7.42
National City, City of	5,107	21,200	32,300	52	34,800	2	6.81
Oceanside, City of	20,651	12,480	24,700	92	35,000	8	1.69
Olivenhain M. W. D.	27,199	---	200	---	450	25	0.02
Okay M. W. D.	64,612	---	9,400	---	10,700	20	0.17
Poway M. W. D.	22,980	---	4,800	---	6,300	16	0.35
Rainbow M. W. D.	40,083	---	2,800	---	3,500	5	0.09
Ranoma M. W. D.	41,365	---	5,600	---	5,850	1	0.14
Rincon del Diablo M. W. D.	21,478	---	14,000	---	16,100	3	0.75
Rio San Diego M. W. D.	54,105	---	23,500	1,175	34,400	7	0.64
San Diego, City of	193,686	394,357	557,300	67	648,200	3	3.55
Santa Fe Irrigation District	4,929	6,223	15,000	141	19,400	6	3.94
South Bay Irrigation District	10,141	3,000	7,700	157	8,750	3	0.86
South Fe Irrigation District	15,962	25,930	64,300	122	73,900	3	4.63
In City of Chula Vista	(9,324)	(13,930)	(42,400)	160	(52,275)	5	5.61
Valley Center M. W. D.	59,510	---	5,000	---	7,500	10	0.13
Yuima M. W. D.	12,460	---	---	---	750	--	0.06
Total Authority	718,960	431,550	956,400	112	1,160,000	4	1.60
San Diego County	2,725,100	3,54,810	1,093,330	80	1,194,000	4	0.44

(1) Population in agencies other than cities was furnished by agencies. (2) Estimated by agencies.

Table 4
ASSESSED VALUATIONS - AUTHORITY MEMBER AGENCIES AND COUNTY

Member Agencies	1963-64			1964-65			1965-66		
	Area 6/30/65		Percent Increase	Assessed Valuation - Secured and Unsecured		Percent Increase	Assessed Valuation - Secured and Unsecured		Total Per Acre
	Acres	Total		Total	Total		Total	Total	
Bueno Colorado M. W. D.	48,974	\$ 52,889,540	7.8	\$ 57,028,730	7.8	\$ 66,205,780	\$ 1,352		
Carlsbad M. W. D.	20,621	37,282,850	0.9	37,612,630	0.9	45,072,640	2,186		
Del Mar, City of	1,082	8,896,680	5.8	9,410,200	5.8	11,350,070	10,518		
Escondido, City of	7,351	32,982,180	12.1	36,988,190	12.1	42,131,900	5,731		
Fallbrook Public Utility District	15,469	14,290,990	3.0	14,725,100	3.0	15,224,080	994		
Helix Irrigation District	31,155	209,695,280	3.9	217,798,250	3.9	218,641,620	7,011		
National City, City of	5,107	40,811,410	1.0	41,230,910	1.0	42,312,250	6,295		
Oceanside, City of	20,651	43,600,740	6.9	46,620,690	6.9	58,273,570	2,822		
Olivenhain M. W. D.	27,199	2,167,450	10.2	2,388,810	10.2	7,801,030	287		
Okay M. W. D.	64,612	26,752,360	2.0	27,297,690	2.0	29,478,130	456		
Poway M. W. D.	22,980	15,023,730	5.6	15,860,440	5.6	16,276,320	708		
Rainbow M. W. D.	40,083	10,773,820	3.6	11,166,610	3.6	12,034,880	301		
Ranoma M. W. D.	41,365	8,614,830	3.2	8,888,500	3.2	9,072,210	219		
Rincon del Diablo M. W. D.	21,478	21,957,870	18.7	26,061,110	18.7	25,969,420	1,209		
Rio San Diego M. W. D.	54,105	39,870,300	2.3	40,785,740	2.3	41,839,730	773		
San Diego, City of	193,686	978,639,550	3.9	1,016,815,350	3.9	1,048,555,250	5,414		
San Diego Irrigation District	4,929	23,827,160	2.8	24,490,490	2.8	27,309,830	5,359		
Santa Fe Irrigation District	10,141	20,667,500	1.4	20,953,370	1.4	25,465,710	2,511		
South Bay Irrigation District	15,962	112,719,210	7.1	120,749,830	7.1	124,915,060	7,826		
Valley Center M. W. D.	59,510	8,237,350	8.3	8,919,880	8.3	9,282,410	136		
Yuima M. W. D.	12,460	* 2,451,040	6.0	2,599,250	6.0	2,647,590	214		
Total Authority	718,960	\$1,709,700,900	4.6	\$1,788,388,770	4.6	\$1,879,990,010	\$ 2,613		
San Diego County	(1) 1,250,000	\$1,796,585,050	4.8	\$1,882,870,770	4.8	\$1,980,868,410	\$ 1,585		

(1) Excluding 1,475,100 acres of tax-exempt lands in San Diego County.

* Estimated, not on Authority tax roll.

SAN DIEGO COUNTY WATER AUTHORITY

Table 5

SALES OF COLORADO RIVER WATER - FISCAL YEAR 1964-65

(All Figures in Acre Feet)

Member Agencies	July	August	Sept.	Oct.	Nov.	Dec.	Total 6 Months
Bueno Colorado M. W. D.	1,583.8	1,637.7	1,305.0	914.8	308.0	435.9	6,185.2
Carlsted M. W. D.	832.0	868.3	897.1	653.9	333.4	321.1	3,815.8
Del Mar, City of	0	0	0	0	0	0	0
Escondido, City of	392.1	382.2	395.4	284.3	195.5	186.2	1,748.7
Fairbrook P. U. D.	1,451.9	1,439.6	1,264.5	1,148.2	458.2	689.1	6,451.5
Helix I. D.	2,952.6	3,022.0	2,739.9	2,343.6	1,519.0	1,878.7	14,455.8
National City & South Bay I. D.	1,484.7	1,506.9	1,328.2	1,078.1	724.3	698.7	6,730.9
Oceanside, City of	927.7	922.9	790.4	708.7	490.1	440.1	4,239.9
Olivenhain M. W. D.	121.1	129.0	119.3	88.0	30.7	22.7	510.8
Otay M. W. D.	737.9	780.9	944.5	974.6	366.3	321.5	4,125.7
Poway M. W. D.	457.4	468.0	392.5	338.5	138.1	181.4	1,973.9
Rainbow M. W. D.	1,653.6	1,808.5	1,723.8	1,157.4	464.3	646.6	7,454.2
Ranoma M. W. D.	198.9	107.2	95.9	68.1	48.3	36.3	464.7
Rincon del Diablo M. W. D. . .	1,230.4	1,257.6	1,104.8	1,048.9	389.6	548.5	5,579.8
Rio San Diego M. W. D.	561.4	517.5	429.4	398.5	254.5	297.4	2,368.7
San Diego, City of	10,501.7	9,365.0	7,393.8	6,380.7	6,960.8	9,169.9	49,682.9
San Diego I. D.	319.7	319.7	309.4	319.7	309.4	0	1,579.9
Santa Fe I. D.	282.8	282.8	273.7	282.8	273.7	0	1,398.8
Valley Center M. W. D.	718.4	743.8	657.0	575.0	211.7	262.7	3,168.6
Yuima M. W. D.	0	0	0	0	0	32.1	32.1
Total Sales to Agencies	26,318.1	25,560.6	21,987.6	18,741.8	13,425.9	15,928.9	121,962.9
Total Sales to Others	6.1	4.5	2.7	8.0	5.2	3.2	29.7
Total Sales to Agencies and Others	26,324.2	25,565.1	21,990.3	18,749.8	13,431.1	15,932.1	121,992.6
Total to Authority Storage + 89.2 + 39.0 + 32.5 + 28.0 + 509.0 + 508.9 + 1,188.6							
Total from Authority Storage - 25.9 0 0 0 0 0 - 25.9							
Total Flow in Authority System	26,378.5	25,604.1	22,022.8	18,777.8	13,931.1	16,441.0	123,155.3
Rate of Flow: c. f. s. to Agencies and Others	428.1	415.8	369.6	304.9	225.7	259.1	334.3
c. f. s. to Authority Storage + 1.3 + 0.6 + 0.5 + 0.5 + 8.4 + 8.3 + 3.2							
c. f. s. from Authority Storage - 0.4 0 0 0 0 0 - 0.1							
c. f. s. Flow in Authority System	429.0	416.4	370.1	305.4	234.1	267.4	337.4

TABLES

Table 5

(Continued)

Jan.	Feb.	March	April	May	June	Total 6 Months	Yearly Total	Yearly Average c. f. s.
210.4	201.4	516.9	357.9	1,252.3	1,271.2	3,910.1	10,095.3	13.9
275.0	216.6	447.8	245.3	634.6	581.9	2,401.2	6,217.0	8.6
0	0	0	0	0	0	0	0	0
132.3	159.4	195.0	211.4	337.4	327.9	1,363.4	3,112.1	4.3
345.5	625.3	595.4	334.7	1,115.2	1,112.1	4,128.0	10,579.5	14.6
1,511.3	3,023.2	2,708.8	1,441.9	2,593.3	2,501.0	13,779.5	28,235.3	39.0
622.6	590.7	888.3	915.2	1,319.1	1,500.1	5,866.0	12,596.9	17.4
367.5	398.6	493.6	411.2	662.1	703.0	3,036.0	7,275.9	10.0
11.9	12.4	38.5	24.2	111.5	104.7	303.2	814.0	1.1
296.0	211.6	284.1	179.4	466.9	570.8	1,918.8	6,044.5	8.3
124.8	143.5	202.6	132.7	397.8	311.1	1,222.5	3,196.4	4.4
294.3	651.6	628.5	312.1	1,253.9	1,335.6	4,476.0	11,930.2	16.5
35.2	23.9	35.5	44.1	68.1	81.6	288.4	753.1	1.0
355.7	435.5	519.3	291.9	1,059.1	1,074.0	3,734.5	9,314.3	12.9
164.0	208.0	232.6	228.0	421.9	441.4	1,725.9	4,094.6	5.7
8,133.8	7,425.0	8,929.9	11,362.1	9,840.5	10,439.9	56,131.2	105,814.1	146.2
0	288.8	0	9.7	422.6	425.0	1,140.1	2,734.0	3.8
0	253.3	0	9.6	422.6	425.0	1,112.7	2,508.5	3.5
131.8	236.2	304.9	135.9	639.0	714.8	2,162.6	5,331.2	7.4
0	22.9	16.0	0	60.6	88.2	187.7	219.8	0.3
12,921.9	15,229.1	17,057.7	16,647.3	23,028.5	24,909.3	108,893.8	230,856.7	318.9
4.7	4.7	3.8	2.7	3.8	4.3	24.0	53.7	0.1
12,926.6	15,233.8	17,061.5	16,650.0	23,032.3	24,913.6	108,917.8	230,910.4	319.0
+ 311.1 +1,027.2 +2,022.8 +2,503.6 +1,506.6 +1,234.3 + 8,605.6 + 9,794.2 +13.5								
0 0 0 0 0 0 0 - 25.9 - 0.1								
13,237.7	16,261.0	19,084.3	19,153.6	24,538.9	25,247.9	117,523.4	240,678.7	332.4
210.2	274.3	277.5	278.8	314.6	403.6	303.4	319.0	
+ 5.1 + 18.5 + 32.9 + 42.1 + 24.5 + 20.7 + 24.0 + 13.5								
0 0 0 0 0 0 0 - 0.1								
215.3	292.8	310.4	321.9	399.1	424.3	327.4	332.4	

SAN DIEGO COUNTY WATER AUTHORITY

TABLES

Table 6
WATER SALES - 1947 to 1965
(All figures in acre feet)

Member Agencies	1947-57 (1)	1957-58	1958-59	1959-60	1960-61	1961-62	1962-63	1963-64	1964-65	Totals
Buena Colorado M. W. D.	16,376	2,665	2,677	3,735	19,143	9,334	9,735	9,358	10,095	74,121
Carlsbad M. W. D.	4,046	1,989	3,111	3,359	5,421	5,092	7,196	6,392	6,217	43,652
Del Mar, City of	---	---	---	---	---	---	---	0	0	0
Eucalypto, City of	5,833	1,553	2,003	2,142	2,757	2,436	2,623	2,853	3,112	25,412
Fallbrook Public Utility District	42,121	5,446	9,032	8,106	10,352	8,876	10,228	10,517	10,580	115,258
Helix Irrigation District	81,469	14,060	14,309	14,176	23,754	22,324	27,398	24,008	28,253	249,823
National City & South Bay I. D.	18,453	16,680	3,509	10,656	12,619	11,917	12,855	12,070	12,597	167,342
Oceanside, City of	11,011	2,941	3,655	3,628	3,323	3,788	4,442	6,297	7,276	47,471
Olivehale M. W. D.	---	---	---	---	12	220	570	701	814	2,317
Osney M. W. D.	---	2	199	629	1,120	1,740	5,332	5,008	6,045	20,094
Poway M. W. D.	---	651	1,311	1,367	2,205	2,009	2,754	3,196	3,196	18,779
Rainbow M. W. D.	---	3,329	6,094	5,662	7,615	7,458	9,202	11,197	11,930	70,386
Ranoma M. W. D.	---	29	160	322	469	517	651	729	713	3,639
Rincon del Diabolo M. W. D.	---	13,189	2,603	3,045	2,844	7,968	6,157	7,581	9,445	9,314
Rio San Diego M. W. D.	---	1,594	819	1,235	2,138	2,899	3,875	3,479	4,095	23,069
San Diego, City of	---	999,717	89,870	41,364	88,323	87,481	104,661	116,100	105,514	1,236,162
San Diego Irrigation District	---	7,298	1,171	0	1,458	2,817	3,068	2,836	2,724	24,890
Santa Fe Irrigation District	---	5,532	998	0	1,346	2,537	2,660	2,509	2,509	21,549
Valley Center M. W. D.	---	792	776	1,358	2,124	2,170	2,962	3,432	5,531	19,674
Yuma, M. W. D.	---	---	---	---	---	---	---	---	---	220
Total Sales to Agencies	787,538	139,694	94,589	156,587	188,346	180,581	217,371	220,811	230,857	2,225,604
Total Sales to Others	155	95	275	271	115	106	15	63	54	1,212
Total to Authority Storage	+44,052	+10,452	+17,671	+4,963	-10,368	+7,972	-3,363	+3,540	+9,794	-117,382
Total from Authority Storage	-33,336	-7,895	-11,857	-19,353	-972	-3,691	-3,342	-1,467	-26	-83,304
Total Flow in Authority System	798,709	142,252	101,478	142,241	198,257	184,458	220,472	231,947	240,679	2,269,894
Rate of Flow:										
c. f. s. to Agencies & Others	113.4	193.9	131.0	216.1	206.6	243.3	300.4	316.6	319.0	174.7
c. f. s. to Authority Storage	+ 6.3	+ 14.4	+ 26.4	+ 6.8	+ 14.6	+ 11.0	+ 11.5	+ 4.9	+ 13.5	+ 9.2
c. f. s. from Authority Storage	- 4.8	- 16.9	- 15.2	- 27.0	- 1.3	- 5.0	- 7.4	- 2.0	- 0.1	- 6.5
c. f. s. Flow in Authority System	114.9	196.5	140.2	195.9	273.9	255.3	304.5	319.5	332.4	177.4

(1) The operation of the first Aqueduct was formally initiated on November 27, 1947. For sales in intervening years see previous reports.

Table 7
WATER PRODUCTION WITHIN AUTHORITY AGENCIES - FISCAL YEARS 1955-56 to 1964-65
(All Figures in Acre Feet)

Member Agencies	From Local and Authority Supplies									
	1955-56	1956-57	1957-58	1958-59	1959-60	1960-61	1961-62	1962-63	1963-64	1964-65
Buena Colorado M. W. D.	+ 13,043	13,058	11,598	15,090	13,116	14,066	11,937	13,763	12,743	13,022
Carlsbad M. W. D.	---	2,973	2,891	3,923	4,980	7,091	6,711	7,285	6,412	5,293
Del Mar, City of	---	---	---	---	---	---	---	---	---	---
Eucalypto, City of	---	1,741	1,730	2,213	2,694	3,136	3,211	3,628	3,953	4,273
Fallbrook Public Utility District	---	8,394	6,709	16,013	9,139	10,724	9,999	10,379	10,712	10,710
Helix Irrigation District	---	15,568	16,541	21,595	21,489	24,629	21,986	23,591	22,943	25,049
National City and South Bay I. D.	---	13,795	12,878	14,597	13,299	14,148	13,329	14,219	14,021	14,143
Oceanside, City of	---	4,653	4,304	5,107	5,081	5,374	5,030	5,795	6,664	7,424
Olivehale M. W. D.	---	---	---	---	---	---	---	---	---	---
Osney M. W. D.	---	---	---	---	---	---	---	---	---	---
Poway M. W. D.	---	---	---	---	---	---	---	---	---	---
Rainbow M. W. D.	---	---	---	---	---	---	---	---	---	---
Ranoma M. W. D.	---	---	---	---	---	---	---	---	---	---
Rincon del Diabolo M. W. D.	---	---	---	---	---	---	---	---	---	---
Rio San Diego M. W. D.	---	---	---	---	---	---	---	---	---	---
San Diego, City of	---	---	---	---	---	---	---	---	---	---
Inside City	+ 68,715	71,250	70,052	80,960	80,796	84,945	81,156	89,825	92,451	95,632
Oceanside City (not in Authority)	3,001	3,856	3,009	3,598	4,176	4,275	4,375	4,498	4,822	4,822
San Diego Irrigation District	+ 3,375	3,607	3,024	4,247	3,757	4,212	3,568	3,847	3,743	4,657
Santa Fe Irrigation District	---	3,663	2,897	3,563	3,487	3,327	3,349	3,706	3,958	3,725
Valley Center M. W. D.	---	791	769	776	1,358	2,124	2,170	2,902	3,432	5,331
Yuma, M. W. D.	---	---	---	---	---	---	---	---	---	---
Total	155,563	158,472	148,079	187,539	186,116	205,340	192,554	219,280	231,548	243,893

+ Use of Colorado River water began prior to this year. See previous annual reports.

* Use of Colorado River water began this year.

(a) Not available

Table 5
WATER PRODUCTION OF AUTHORITY AGENCIES - FISCAL YEAR 1964-65

Member Agencies	TOTAL WATER PRODUCTION				SOURCE OF WATER			
	as m.g.d.	as c.f.s.	as ac. ft./yr.	Amount ac. ft.	Percent	Amount ac. ft.	Percent	
				Local Supply		Authority Supply		
Bueno Colorado M. W. D.	11.62	17.99	13,022.3	2,834.0	21.8	10,188.3	78.2	
Carlsbad M. W. D.	5.62	8.70	6,295.2	81.2	1.3	6,214.0	98.7	
Del Mar, City of	0.56	0.87	629.0	0	0	629.0	100.0	
Escondido, City of	3.82	5.90	4,274.6	1,196.7	28.0	3,077.9	72.0	
Fallbrook Public Utility District	9.57	14.80	10,716.1	136.6	1.3	10,579.5	98.7	
Helix Irrigation District	22.38	34.63	25,068.7	314.8	1.3	24,753.9	98.7	
National City and South Bay I. D.	12.63	19.53	14,143.0	2,699.0	19.1	11,444.0	80.9	
Oceanside, City of	6.63	10.25	7,424.4	104.4	1.4	7,320.0	98.6	
Olivehale M. W. D.	0.64	0.99	716.6	0	0	716.6	100.0	
Olway M. W. D.	3.40	8.35	6,044.3	0	0	6,044.3	100.0	
Poway M. W. D.	2.85	4.42	3,196.4	0	0	3,196.4	100.0	
Rainbow M. W. D.	11.27	17.44	12,629.3	699.1	5.5	11,930.2	94.5	
Ranoma M. W. D.	0.77	1.19	859.3	106.2	12.4	753.1	87.6	
Rincones del Diablo M. W. D.	10.66	16.50	11,944.5	2,630.2	22.0	9,314.3	78.0	
Rio San Diego M. W. D.	4.09	6.33	4,560.2	485.6	10.6	4,074.6	89.4	
San Diego, City of:								
Inside City	84.84	131.27	95,032.4	0	0	95,032.4	100.0	
Outside City (Not in Authority)	4.39	6.80	4,921.5	4,921.5	100.0	0	0	
San Diego Irrigation District	3.62	5.60	4,057.3	0	0	4,057.3	100.0	
Santa Fe Irrigation District	3.33	5.14	3,734.5	0	0	3,734.5	100.0	
Valley Center M. W. D.	4.76	7.36	5,331.2	0	0	5,331.2	100.0	
Yuma M. W. D.	8.29	12.82	9,282.4	9,071.9	97.7	210.5	2.3	
Total	217.74	336.83	243,893.4	25,281.2	10.4	218,612.2	89.6	

Note: This table is a compilation of data furnished by member agencies.
Figures include losses in transmission and distribution systems but not in conservation reservoirs.

Table 9
UNIT WATER PRODUCTION - PER ACRE AND PER CAPITA 1964-65

Member Agencies	Gross Area (2)	acres	Total Production of Water	ac. ft.	Estimated Area Served by Water System	acres	Water Production Per Area Served	ac. ft./acre/yr.	Estimated Population	Water Production Per Capita	ac. ft./cap./yr.
Bueno Colorado M. W. D.	45,374		13,022.3		17,600		0.74		35,900		0.33
Carlsbad M. W. D.	20,621		6,295.2		15,000		0.42		12,000		0.52
Del Mar, City of	1,082		629.0		1,080		0.58		3,500		0.17
Escondido, City of	7,351		4,274.6		7,100		0.60		36,300		0.16
Fallbrook Public Utility District	15,469		10,716.1		7,600		1.41		10,000		1.01
Helix Irrigation District	31,185		25,068.7		25,300		0.89		150,400		0.17
National City, City of	5,107		3,531.0		3,820		1.01		34,800		0.11
Oceanside, City of	20,651		7,424.4		10,000		0.74		35,000		0.21
Olivehale M. W. D.	27,199		716.6		5,800		0.12		450		1.59
Olway M. W. D.	64,612		6,044.5		23,300		0.26		10,700		0.56
Poway M. W. D.	22,950		3,196.4		6,500		0.49		8,700		0.37
Rainbow M. W. D.	40,093		12,629.3		24,970		0.51		3,500		3.61
Ranoma M. W. D.	41,363		859.3		6,400		0.13		5,850		0.15
Rincones del Diablo M. W. D.	21,478		11,944.5		11,150		1.07		16,100		0.74
Rio San Diego M. W. D.	54,105		4,560.2		29,050		0.20		34,400		0.13
San Diego, City of	193,686		(1) 95,032.4		72,000		1.32		648,300		0.15
San Diego Irrigation District	4,929		4,057.3		4,180		0.97		19,400		0.21
Santa Fe Irrigation District	10,141		3,734.5		8,850		0.42		8,750		0.43
South Bay Irrigation District	15,962		10,292.0		9,450		1.09		73,900		0.14
Valley Center M. W. D.	59,510		5,331.2		11,000		0.48		7,500		0.71
Yuma M. W. D.	12,400		9,282.4		3,300		2.81		750		12.38
Total and Average	718,900		238,971.9		300,450		0.80		1,150,000		0.21

(1) Does not include production by City of San Diego for areas outside City (not in Authority).

(2) Does not include overlapping area as shown in Table 1.

Table 10
AGRICULTURAL USE OF WATER - FISCAL YEAR 1964-65

Member Agencies	WATER USED FOR AGRICULTURAL PURPOSES				Percent of Agricultural Water to Total Production
	Total Water Production (ac. ft.)	From Local Supply (ac. ft.) (%)	From Authority (ac. ft.) (%)	Total (ac. ft.)	
Buena Colorado M. W. D.	13,022.3	1,909.5	6,901.8	8,511.3	67.7
Carlsbad M. W. D.	6,295.2	56.7	4,629.4	4,686.1	74.4
Del Mar, City of	629.0	(a)	(a)	(a)	(a)
Escondido, City of	4,274.6	(a)	(a)	(a)	(a)
Fallbrook, Public Utility District	10,716.1	122.0	9,494.5	9,616.5	89.7
Helix Irrigation District	25,068.7	106.5	8,741.9	8,848.4	35.3
National City & South Bay I. D.	14,143.0	227.1	1,201.3	1,428.4	10.1
Oceanside, City of	7,424.4	(a)	(a)	(a)	(a)
Olivenhain M. W. D.	716.6	3.2	697.4	700.6	97.8
Otay M. W. D.	6,044.5	0	3,767.7	3,767.7	62.3
Poway M. W. D.	3,196.4	0	2,129.4	2,129.4	66.6
Rainbow M. W. D.	12,629.3	671.3	11,322.6	11,993.9	95.0
Ranoma M. W. D.	859.3	36.7	271.9	308.6	35.9
Rincon del Diablo M. W. D.	11,944.5	1,934.1	7,534.4	9,468.5	79.3
Rio San Diego M. W. D.	4,380.2	60.7	176.9	237.6	5.2
San Diego, City of	99,933.9	0	5,998.7	5,998.7	6.0
San Dieguito Irrigation District	4,057.3	(b)	(b)	(b)	(b)
Santa Fe Irrigation District	3,724.5	(b)	(b)	(b)	(b)
Valley Center M. W. D.	5,331.2	0	4,942.8	4,942.8	92.7
Yuma M. W. D.	9,282.4	8,880.8	306.6	9,087.4	97.9
Total	243,893.4	14,008.6	68,017.3	82,025.9	33.6

(a) No report was received from agency, assumed no agricultural use.
(b) Included in City of San Diego

Table 11
AUTHORITY STORAGE IN SAN VICENTE RESERVOIR
(Fiscal Year 1964-65)

Member Agencies	Total Quantity in Storage 7/1/64 (acre feet)	Placed into Storage during Fiscal Year (acre feet)	Withdrawn during Fiscal Year		Total Quantity in Storage 6/30/65 (acre feet)
			By Delivery (acre feet)	By Evaporation (acre feet)	
Buena Colorado M. W. D.	355.3	1,550.0	0	34.8	1,570.5
Carlsbad M. W. D.	0	0	0	0	0
Del Mar, City of	0	0	0	0	0
Escondido, City of	199.6	500.0	0	15.1	684.5
Fallbrook Public Utility District	488.8	150.0	0	29.8	609.0
Helix Irrigation District	0	0	0	0	0
National City & South Bay I. D.	0	0	0	0	0
Oceanside, City of	793.2	0	0	44.1	731.1
Olivenhain M. W. D.	96.9	212.0	0	8.9	300.0
Otay M. W. D.	1,413.9	335.7	0	54.4	1,695.2
Poway M. W. D.	2,106.0	500.0	0	121.5	2,484.5
Rainbow M. W. D.	4,963.1	319.9	0	283.0	5,000.0
Ranoma M. W. D.	26.1	200.0	25.9	3.1	197.1
Rincon del Diablo M. W. D.	2,354.0	2,500.0	0	133.7	4,700.3
Rio San Diego M. W. D.	1,453.2	1,000.0	0	89.8	2,363.4
San Diego, City of	0	0	0	0	0
San Dieguito Irrigation District	0	0	0	0	0
Santa Fe Irrigation District	2,894.2	2,302.9	0	197.1	5,000.0
Valley Center M. W. D.	492.4	0	0	27.2	465.2
Yuma M. W. D.	0	0	0	0	0
Total	17,638.7	9,770.3	25.9	1,092.5	26,290.8

Table 12
 CHEMICAL CHARACTER OF NATURAL COLORADO RIVER WATER
 AT WEST PORTAL OF SAN JACINTO TUNNEL
 Year Ending June 30, 1965
 Samples Taken at Entrance to San Diego Aqueduct by M. W. D.
 and Analyzed by District Laboratory

Month	Total Hardness as P. P. M. CaCO ₃	Non Carbonate Hardness as P. P. M. CaCO ₃		Alkalinity as P. P. M. CaCO ₃	Magnesium as P. P. M. of Mg.	Hydrogen Ion Concentration	Temperature when sampled °F
		Total	Phosphatelin				
July	339	220	119	2	29.0	8.5	79
August	334	216	118	2	29.0	8.5	74
September	334	218	116	2	29.5	8.5	74
October	336	218	118	2	29.5	8.4	76
November	339	224	115	0	29.5	8.1	69
December	343	225	118	2	30.0	8.3	59
January	346	226	120	0	30.0	8.2	50
February	352	231	121	0	31.0	8.2	53
March	357	234	123	0	31.5	8.3	60
April	357	234	123	0	31.0	8.2	63
May	368	245	123	0	33.0	8.1	71
June	373	250	123	1	33.0	8.4	73
Average	348	228	120	1	30.5	8.3	67
Maximum	373	250	123	2	33.0	8.5	79
Minimum	334	216	115	0	29.0	8.1	50

Table 13
 ALLOCATION OF RIGHT TO PURCHASE AUTHORITY WATER
 As of June 30, 1965

Member Agencies	Total Amount Paid by Each Member Agency to 6/30/65	Amount Remaining to be paid under Terms of Annexation	Total Contributions Paid and Contracted for	Allocation	
				Percentage of Authority Supply	Equivalent Flow c. f. s.
Buena Colorado M. W. D.	\$ 316,189.29	\$ 0.00	\$ 516,189.29	2.71	12.19
Carlbad M. W. D.	366,035.49	0.00	366,035.49	1.92	8.64
Del Mar, City of	48,322.95	103,635.25	151,978.20	0.80	3.60
Escondido, City of	299,273.90	0.00	299,273.90	1.57	7.06
Fallbrook Public Utility District	151,662.00	3,232.66	154,894.66	0.81	3.63
Helix Irrigation District	2,084,172.91	5,545.91	2,089,718.82	10.95	49.37
National City, City of	469,692.40	0.00	469,692.40	2.46	11.07
Oceanside, City of	451,120.47	0.00	451,120.47	2.37	10.66
Olivenhain M. W. D.	15,864.88	20,714.04	36,578.92	0.19	0.86
Okay M. W. D.	176,184.31	9,681.62	185,865.93	0.97	4.37
Poway M. W. D.	100,749.36	1,722.61	102,471.97	0.54	2.43
Rainbow M. W. D.	90,708.73	1,010.59	92,319.32	0.48	2.16
Ramona M. W. D.	98,141.20	3,050.08	101,191.28	0.53	2.39
Rincones del Diablo M. W. D.	285,542.62	0.00	285,542.62	1.50	6.75
Rio San Diego M. W. D.	325,340.25	42,764.09	368,104.34	1.93	8.68
San Diego, City of	11,747,383.34	0.00	11,747,383.34	61.57	277.06
San Dieguito Irrigation District	234,935.29	4,150.55	239,085.84	1.25	5.62
Santa Fe Irrigation District	207,651.49	0.00	207,651.49	1.09	4.91
South Bay Irrigation District	1,088,286.42	0.00	1,088,286.42	5.70	25.63
Valley Center M. W. D.	79,373.16	2,245.15	81,618.31	0.43	1.94
Yulma M. W. D.	7,338.31	36,091.20	43,429.51	0.23	1.04
Total Authority	\$18,443,965.77	\$234,463.75	\$19,078,429.52	100.00	450.00

Table 14
WATER SALES BY METROPOLITAN WATER DISTRICT
Fiscal Years 1941-42 to 1964-65

Year	To Member Municipalities						Total Acre feet
	Natural Water		Treated Water		Total to Agencies	To Others	
	Acre feet	Per cent	Acre feet	Per cent	Acre feet	Acre feet	
1941-42	0	0	9,372.6	100	9,372.6	70.7	9,443.3
1942-43	0	0	14,457.8	100	14,457.8	2,626.4	17,084.2
1943-44	0	0	15,874.9	100	15,874.9	3,301.8	19,176.7
1944-45	0	0	30,591.3	100	30,591.3	1,715.7	32,307.0
1945-46	0	0	46,685.8	100	46,685.8	1,264.2	47,950.0
1946-47	0	0	59,861.8	100	59,861.8	524.0	60,385.8
1947-48	41,093.5	36	71,995.4	64	113,088.9	116.8	113,255.7
1948-49	71,642.6	49	73,237.1	51	144,879.7	128.4	145,008.1
1949-50	69,308.0	49	72,936.0	51	142,244.0	23,371.6	165,615.6
1950-51	75,000.9	54	63,493.1	46	138,494.0	26,978.6	165,472.6
1951-52	66,674.3	44	84,616.1	56	151,290.4	42,464.2	193,754.6
1952-53	30,845.3	24	99,589.6	76	130,434.9	31,682.4	162,117.3
1953-54	120,773.0	51	115,550.6	49	236,323.6	7,820.7	244,144.3
1954-55	192,544.7	59	134,923.3	41	327,468.0	58,184.5	385,652.5
1955-56	190,337.2	53	169,506.4	47	359,843.6	45,562.9	405,406.5
1956-57	286,059.1	60	191,110.7	40	477,169.8	66,074.1	543,243.9
1957-58	266,024.1	57	197,900.0	43	463,924.1	75,612.8	539,536.9
1958-59	244,354.2	46	282,248.1	54	526,602.3	74,107.1	600,709.4
1959-60	425,019.0	58	304,874.8	42	729,893.8	3,523.2	733,417.0
1960-61	594,521.1	64	335,297.2	36	929,728.3	4,099.4	933,827.7
1961-62	608,811.0	66	312,975.9	34	921,786.9	3,676.9	925,463.8
1962-63	668,881.8	66	348,092.6	34	1,016,974.4	3,677.0	1,020,651.4
1963-64	671,853.4	63	388,553.9	37	1,060,407.3	3,776.7	1,064,184.0
1964-65	645,577.3	58	471,042.0	42	1,116,619.3	5,035.3	1,121,654.6

Table 15
WATER PRODUCTION - METROPOLITAN WATER DISTRICT CONSTITUENT AREAS
Figures Furnished by Metropolitan Water District

Constituent Areas	Total Water Production			Source of Water Produced - 1964-65			
	1964-65		Percent Increase or Decrease	M.W.D.			
	Amount ac. ft.	Amount ac. ft.		Amount ac. ft.	Percent of Total	Other	
Anaheim	31,180	83,821	5.5	13,260	39.2	20,561	60.8
Beverly Hills	18,231	14,134	- 1.0	6,382	32.6	7,752	47.4
Barbours	25,076	25,071	- 0.4	7,107	28.3	17,964	71.7
Calleguas M. W. D.	59,125	64,623	9.3	11,587	18.4	52,726	81.6
Central Basin M. W. D.	210,252	213,609	1.3	50,352	23.6	162,637	76.4
Chino Basin M. W. D.	185,181	183,267	- 2.8	19,891	8.5	172,376	91.5
Coastal M. W. D.	19,641	23,970	22.0	22,840	95.7	1,030	4.3
Coomstock	8,305	7,531	- 5.7	3,870	29.0	3,661	71.0
Eastern M. W. D.	121,332	115,081	- 5.2	32,374	28.3	82,707	71.7
Fullerton M. W. D.	15,346	13,176	- 15.4	9,025	58.3	6,151	46.5
Fullerton	15,963	20,337	7.6	10,292	52.1	9,745	47.9
Glendale	28,498	32,631	6.0	3,254	10.4	26,277	89.6
Las Virgenes M. W. D.	661	1,674	133.3	1,621	96.8	53	3.2
Long Beach	55,619	51,500	- 6.2	32,268	58.3	23,132	41.7
Los Angeles	523,671	520,876	- 0.5	80,157	15.4	440,719	84.6
Orange County M. W. D.	215,945	219,409	1.6	72,009	33.1	147,000	66.9
Pasadena	33,534	33,843	0.9	19,131	57.3	14,222	42.7
Pomona Valley M. W. D.	32,933	36,519	7.3	13,336	23.3	45,453	70.5
San Diego C. W. A.	237,850	266,905	3.5	241,634	96.3	2,281	9.5
San Marino	5,123	4,974	- 2.9	2	0.1	4,972	99.9
Santa Ana	19,969	20,883	4.9	7,104	34.0	13,779	68.0
Santa Monica	14,744	14,911	1.1	10,504	70.4	4,407	29.6
Torrance	19,459	19,631	0.9	16,449	83.8	3,182	16.2
Upper San Gabriel Valley M. W. D.	125,932	125,179	- 0.6	0	0	125,179	100.0
West Basin M. W. D.	140,164	143,453	2.3	95,453	66.3	48,002	33.7
Western M. W. D.	223,522	213,296	- 4.1	20,296	9.7	193,000	90.3
Totals	2,419,861	2,441,906	0.9	796,108	32.6	1,645,798	67.4

(a) Includes 4,645 acre feet of seepage into San Jacinto Tunnel.
 (b) Includes 318,578 acre feet brought in by way of Los Angeles Aqueduct.
 (c) Does not include 148,492 acre feet of water delivered to Central Basin for replenishment and barrier injection purposes within the Central and West Basin Water Replenishment District.
 (d) Does not include 567 acre feet of water delivered for replenishment purposes.
 (e) Does not include 132,271 acre feet of water delivered for replenishment purposes.
 (f) Includes 23,037 acre feet delivered and placed in storage.
 (g) A total of 10,000 acre feet of water was delivered for replenishment purposes.
 (h) Does not include 25,652 acre feet of water used for barrier injection.
 (i) Includes 4,000 acre feet diverted to Lake Elsinore.

Table 16
ANALYSIS OF COLORADO RIVER AQUEDUCT WATER
TAKEN AT WEST PORTAL OF SAN JACINTO TUNNEL
For Year Ending June 30, 1965

Constituent	Symbol	ANALYSIS	
		Average	Minimum
Silica	SiO ₂	10.7 ppm	12.8 ppm
Iron	Fe	-	7.3 ppm
Calcium	Ca	99.0 "	85.0 "
Magnesium	Mg	30.5 "	29.0 "
Sodium	Na	104.0 "	96.0 "
Potassium	K	5.0 "	4.0 "
Carbonate	CO ₃	1.0 "	0 "
Bicarbonate	HCO ₃	144.0 "	137.0 "
Sulfate	SO ₄	309.0 "	289.0 "
Chloride	Cl	100.0 "	92.0 "
Nitrate	NO ₃	1.3 "	0.7 "
Fluoride	F	0.4 "	0.4 "
Total Dissolved Solids		723.0 "	688.0 "
Hardness as CaCO ₃		348.0 "	334.0 "
Total		120.0 "	115.0 "
Carbonate		228.0 "	216.0 "
Noncarbonate		1.0 "	0 "
Alkalinity - Phenolphthalein		120.0 "	115.0 "
Alkalinity - Total		1.0 "	0 "
Free Carbon Dioxide	CO ₂	1.0 "	0 "
Hydrogen Ion Concentration	pH	8.3	8.1
Electrical Conductivity	ECx10 ⁶ at 25°C	1,140.0	1,090.0

Table 17
ASSESSED VALUATIONS AND TAX RATES OF THE
METROPOLITAN WATER DISTRICT OF SOUTHERN CALIFORNIA

Fiscal Year	Area (acres)	Assessed Valuation Total (1)	Tax Rate	
			Per \$100 Secured	Per \$100 Unsecured
1929-30	-	\$ 2,439,836,920	\$0.04	\$0.00
1930-31	-	2,431,684,250	.03	.04
1931-32	-	2,382,184,445	.03	.03
1932-33	-	1,936,051,180	.04	.03
1933-34	-	1,654,403,890	.04	.04
1934-35	-	1,587,147,565	.10	.04
1935-36	-	1,783,531,020	.20	.10
1936-37	-	1,789,160,685	.37	.20
1937-38	-	1,827,765,725	.40	.37
1938-39	-	1,896,966,255	.40	.40
1939-40	-	1,910,152,190	.42	.40
1940-41	389,588	1,841,248,450	.49	.42
1941-42	399,875	1,900,599,934	.48	.49
1942-43	400,614	2,001,924,735	.48	.48
1943-44	401,190	2,005,496,430	.48	.48
1944-45	401,536	2,109,192,795	.48	.48
1945-46	402,779	2,159,731,425	.50	.48
1946-47	501,425	2,413,186,570	.48	.50
1947-48	546,573	3,443,212,822 (2)	.35	.48
1948-49	578,368	3,883,081,225	.34	.35
1949-50	585,184	4,181,812,855	.34	.34
1950-51	721,850	4,281,519,725	.31	.34
1951-52	995,130	4,674,664,040	.30	.31
1952-53	1,130,448	5,372,498,515	.28	.30
1953-54	1,368,038	6,015,691,980	.25	.28
1954-55	1,793,651	6,548,392,114	.23	.25
1955-56	1,876,256	8,514,868,335	.21	.23
1956-57	1,932,205	9,674,000,560	.19	.21
1957-58	2,046,189	11,235,906,510	.18	.19
1958-59	2,128,333	12,070,838,070	.18	.18
1959-60	2,171,290	12,714,205,470	.17	.18
1960-61	2,544,960	13,737,971,925	.16	.17
1961-62	2,647,014	14,803,292,587	.15	.16
1962-63	2,797,946	15,699,681,030	.14	.15
1963-64	2,825,306	17,261,412,395	.14	.14
1964-65	2,882,144	17,757,246,740	.14	.14
1965-66 (3)	---	19,143,157,788	.14	.14

(1) Includes secured, unsecured, and public utility valuations.

(2) First year in which Authority assessed valuation was included in district's assessed valuation.

(3) Data for 1965-66 were available before completion of report and are included for convenience of reader.

September 7, 1965

Mr. Linden R. Burzell
General Manager and Chief Engineer
San Diego County Water Authority
2750 Fourth Avenue
San Diego, California 92103

Dear Sir:

I am pleased to submit to you the financial report for the fiscal year ended June 30, 1965.

It is the policy of the Board of Directors of the San Diego County Water Authority that General Fund operation and maintenance expense be met from water revenues. To accomplish this, the Authority computes its water sales price by adding an override of \$1.25 per acre foot to the purchase price. The override was reduced from \$2.00 per acre foot to \$1.25 per acre foot, effective September 1, 1964. This was possible because of the substantial increase in the volume of water sales since the establishment of the \$2.00 override and because of the relative stability of operation and maintenance expense.

Despite the fact that the reduction was in effect for most of the year, General Fund operations still produced \$95,579 excess revenues over expenditures. The General Fund unappropriated surplus was \$955,766 at June 30, 1964 and \$873,197 at June 30, 1965. These amounts include an investment in water in storage of \$348,672 at June 30, 1964 and \$573,353 at June 30, 1965. This information together with the projected earnings for 1965-66 give a clear indication that the \$1.25 per acre foot charge will continue to be adequate.

The accounting system of the Water Authority is on a modified accrual basis. This financial report has been prepared in accordance with generally accepted principles of municipal budgetary accounting, applied on a basis consistent with that of the preceding year.

Respectfully,



Henry Lozano
Chief Accounting Officer

PEAT, MARWICK, MITCHELL & Co.

CERTIFIED PUBLIC ACCOUNTANTS
(INCORPORATING EVERTS AND ESENOFF)
1850 FIFTH AVENUE
SAN DIEGO, CALIFORNIA 92101

INDEPENDENT ACCOUNTANTS' REPORT

The Board of Directors
San Diego County Water Authority:

We have examined the financial statements of the San Diego County Water Authority as of and for the year ended June 30, 1965 as listed under exhibits and schedules in the accompanying table of contents. Our examination was made in accordance with generally accepted auditing standards, and accordingly included such tests of the accounting records and such other auditing procedures as we considered necessary in the circumstances.

The financial statements included in this report were prepared from accounting records kept on a modified accrual basis. In general, revenues are recorded when earned and expenditures are recorded upon incurrance of liability, except accrued interest on outstanding indebtedness, which is payable from appropriations of the following year.

In our opinion, such financial statements present fairly the financial position of the San Diego County Water Authority at June 30, 1965 and the results of its operations for the year then ended, in conformity with generally accepted accounting principles applied on a basis consistent with that of the preceding year.

Peat, Marwick, Mitchell & Co.

August 27, 1965

SAN DIEGO COUNTY WATER AUTHORITY

Exhibit A
BALANCE SHEET

June 30, 1965

ASSETS

CURRENT ASSETS - GENERAL FUND:			
Cash with treasurer	\$ 198,200.24		
Petty cash	200.00		
Accounts receivable	675,261.50		
Inventory of water in storage	573,352.70		
Inventory of materials and supplies	5,364.28		
Investments	<u>90,660.00</u>	\$ 1,542,498.72	
SPECIAL FUND ASSETS (note 1):			
Reserve fund:			
Cash with treasurer	\$ 742,338.48		
Investments	<u>89,910.00</u>	842,278.48	
Waterworks bonds, 1947, interest and sinking fund:			
Cash with treasurer	261,909.88		
Cash with bond paying agent	<u>7,000.00</u>	268,909.88	
U. S. Government contract fund:			
Cash with treasurer	9,525.67		
Due from Metropolitan Water District (note 2)	<u>9,339,874.70</u>	9,349,400.37	
Waterworks bonds, 1957, improvement fund:			
Cash with treasurer		2,828,531.95	
Waterworks bonds, 1957, interest and redemption fund:			
Cash with treasurer	78,182.01		
Cash with bond paying agent	<u>10,971.25</u>	89,153.26	
Capital improvement fund:			
Cash with treasurer	559,423.00		
Annexation charges receivable - not due	<u>234,463.70</u>	793,886.70	14,172,160.69
FIXED ASSETS:			
Participation rights in Metropolitan Water District (note 3)		53,025,580.58	
Plant	52,307,516.30		
Less allowance for depreciation	<u>4,309,448.11</u>	47,998,068.19	
Work in progress		<u>3,029,368.74</u>	
			104,052,917.51
			<u>\$119,767,576.92</u>

See accompanying notes to financial statements.

FINANCIAL REPORT

Exhibit A (Continued)

BALANCE SHEET

June 30, 1965

LIABILITIES, RESERVES AND SURPLUS

CURRENT LIABILITIES - GENERAL FUND:			
Accounts payable	\$ 577,906.70		
Unapplied credits for irrigation water	59,173.18		
Advances by agencies for construction	31,022.03		
Deposits by agencies for annexation	<u>1,000.00</u>	\$ 669,101.91	
CURRENT LIABILITIES - SPECIAL FUNDS:			
Accounts payable - waterworks bonds, 1957, improvement fund			232,591.35
LONG-TERM DEBT:			
General obligation bonds payable - not due		34,885,000.00	
Estimated balance on U. S. Government contract - First Aqueduct cost (note 4)		17,651,138.36	
Balance of annexation charges - Metropolitan Water District (note 3)		<u>11,263,073.54</u>	63,799,211.90
SURPLUS AND RESERVES:			
Net equity in fixed assets		40,253,705.61	
Reserve for encumbrances - waterworks bonds, 1957, improvement fund			165.05
Reserves for debt redemption:			
Retirement of general obligation bonds	\$ 358,063.14		
Retirement of U. S. Government contract	<u>9,349,400.37</u>	9,707,463.51	
Appropriated surplus:			
Petty cash fund balance	200.00		
Reserve fund balance	842,278.48		
Waterworks bonds, 1957, improvement fund - reserve for authorized expenditures	2,375,637.89		
Capital improvement fund balance	<u>791,030.58</u>		
	4,608,605.95		
Incomplete projects (continuing appropriations):			
Waterworks, bonds, 1957, improvement fund	\$220,827.66		
Capital improvement fund	<u>2,797.17</u>	223,624.83	4,232,230.78
UNAPPROPRIATED SURPLUS:			
Invested in water in storage	573,352.70		
Invested in materials and supplies	5,364.28		
Available for appropriation	<u>294,479.83</u>	873,196.81	
			35,066,761.70
			<u>\$119,767,576.92</u>

SAN DIEGO COUNTY WATER AUTHORITY

Exhibit B
STATEMENT OF CHANGES IN SURPLUS AND RESERVES
Year Ended June 30, 1965

	Total	General Fund	Reserve Fund
Balances, July 1, 1964	\$51,331,040.66	\$ 966,930.24	\$594,886.50
Excess of revenue over expense - general fund (Exhibit C)	95,579.24	95,579.24	
Revenue other than general fund (Schedule 2)	2,882,136.23		40,297.94
Prior year cross-connection expenditures recovered from other funds	24,218.21	24,218.21	
Increase in special deposits for bond interest	3,608.25		
Charges for new annexations	19,800.00		
Refunds of prior years' expenditures	339.64	339.64	
Interfund transfers	450,899.06		207,094.04
Agencies contributions to Metropolitan Water District	3,212,760.83		
Payments on U. S. Government contracts	879,029.84		
Redemptions of waterworks bonds	600,000.00		
Additions to plant and equipment	2,866,454.28		
Total additions	10,834,825.58	120,137.09	247,391.98
Total beginning balances plus additions	62,165,866.24	1,087,067.33	842,278.48
Expenditures, other than general fund (Schedule 2)	3,585,813.55		
Tax collection expense	5,178.95		
Decrease in amount due from Metropolitan Water District	456,802.52		
Annexation charges collected (included in revenues above)	39,640.17		
Expenditures from general fund for plant and equipment	6,576.48	6,576.48	
Decrease in special deposit for bond interest	1,700.00		
Interfund transfers	450,899.06	207,094.04	
Depreciation expense	534,779.31		
Net book value of portion of pipe line sold to the City of Oceanside	17,714.44		
Total deductions	7,090,104.48	213,670.52	
Balances, June 30, 1965	\$55,065,761.76	\$ 873,396.81	\$542,278.48

See accompanying notes to financial statements.

FINANCIAL REPORT

Exhibit B (Continued)
STATEMENT OF CHANGES IN SURPLUS AND RESERVES
Year Ended June 30, 1965

Waterworks Bonds, 1947 Interest and Sinking Fund	U. S. Government Contract Fund	Waterworks Bonds, 1957 Improvement Fund	Waterworks Bonds, 1957 Interest and Redemption Fund	Capital Improvement Fund	Net Equity in Fixed Assets
\$244,363.36	\$ 9,820,519.34	\$5,444,107.97	\$ 129,673.38	\$582,603.46	\$23,447,954.41
91,919.32	1,165,356.75		1,529,751.34	58,810.88	
			3,608.25	19,800.00	
				243,805.02	
					3,212,760.83
					879,029.84
					600,000.00
					2,866,454.28
91,919.32	1,165,356.75		1,529,751.34	322,415.90	7,358,244.95
436,284.68	10,985,876.09	5,444,107.97	1,659,032.97	905,019.36	40,806,199.36
165,500.00	1,178,253.55	2,604,272.35	1,566,380.00	71,407.65	
174.80	1,419.65		3,499.71	84.79	
	456,802.52				
				39,640.17	
1,700.00					
		243,805.02			534,779.31
					17,714.44
167,374.80	1,626,475.72	2,848,077.37	1,569,879.71	111,132.61	552,493.75
\$263,909.88	\$ 9,349,400.37	\$2,596,030.60	\$ 89,153.26	\$793,886.75	\$40,233,705.61

SAN DIEGO COUNTY WATER AUTHORITY

Exhibit C

STATEMENT OF REVENUE AND EXPENSE - GENERAL FUND

Year ended June 30, 1965

WATER SALES:			
Gross revenue from water sales	\$ 6,120,829.80		
Less irrigation credits	<u>632,418.80</u>		
Net revenue from water sales		\$ 5,488,411.00	
COST OF WATER SOLD:			
Water in storage July 1, 1964		348,672.40	
Water purchased	\$ 6,040,590.00		
Less irrigation credits	<u>632,418.80</u>	5,408,171.20	
Storage and pumping charges		<u>999.99</u>	
		5,757,843.59	
Less water in storage June 30, 1965		<u>573,352.70</u>	
Cost of water sold			5,184,490.89
Gross margin from water sales			303,920.11
OTHER OPERATING REVENUE:			
Water transportation charges			<u>723.00</u>
Gross operating revenue			304,643.11
OPERATING EXPENSE (Schedule 1)			
Excess of operating revenue over expense			<u>224,652.74</u>
NONOPERATING REVENUE:			
Property rentals	1,906.00		
Earnings on investments	13,966.70		
Miscellaneous revenue, net of refunds	<u>(283.83)</u>	15,588.87	
Excess of revenue over expense - general fund to surplus			<u>\$ 95,579.24</u>

See accompanying notes to financial statements.

FINANCIAL REPORT

NOTES TO FINANCIAL STATEMENTS

June 30, 1965

(1) Uncollected Taxes Receivable

The Authority has uncollected taxes receivable as follows:

Waterworks bonds, 1947, interest and sinking fund	\$ 2,868.88
U. S. Government contract fund	19,623.11
Waterworks bonds, 1957, interest and redemption fund	49,229.91
Capital improvement fund	<u>1,281.64</u>
Total uncollected taxes receivable	<u>\$ 73,003.54</u>

The Authority has set up allowances for delinquency equal to the total of the uncollected taxes. Revenue from delinquent taxes is recorded when collected.

(2) Due from Metropolitan Water District

The amount of \$9,339,874.70 due the Authority from Metropolitan Water District represents the estimated balance of the District's share of the cost of the first and second barrels of the First San Diego Aqueduct. Upon final settlement, the first barrel is subject to adjustment by the U. S. Government.

(3) Participation Rights in Metropolitan Water District

The recorded value and equity in participation rights in the Metropolitan Water District is as follows:

Total participation rights recorded to June 30, 1965	\$53,025,580.58
Less unpaid balance of annexation charges due Metropolitan Water District	<u>11,263,073.54</u>
Equity in participation rights	<u>\$41,762,507.04</u>

(4) Estimated Balance on U. S. Government Contract - First Aqueduct Cost

Upon final settlement the amount payable on the U. S. Government contract relating to the first barrel of the First San Diego Aqueduct is subject to adjustment by the U. S. Government.

(5) Proceeds from Sale of Pipeline

On November 13, 1963 the Authority entered into an agreement to sell a branch pipeline to the City of Oceanside. The total price (\$100,000) is subject to purchase in annual amounts of \$10,000 or more. During the year the City purchased one-tenth of the pipeline for \$10,000 and will buy additional sections for cash in future years.

SAN DIEGO COUNTY WATER AUTHORITY

Schedule 1
STATEMENT OF OPERATING EXPENSE
Year Ended June 30, 1965

GENERAL AND ADMINISTRATION:		
Engineering department	\$39,454.82	
Accounting department	16,159.00	
Stenographic department	11,855.12	
Legal services	12,000.00	
Overtime	170.41	
Employee retirement - S. E. R. S.	7,533.71	
Employee retirement - O. A. S. D. I.	3,082.97	
Employee insurance - C. P. S.	1,988.32	
Vacation and sick leave	9,658.00	
Expense of directors	4,576.22	
Expense of staff	2,179.22	
Auditing	2,800.00	
Utilities and telephone - San Diego	3,128.85	
Postage	679.09	
Printing, binding and reproduction	3,772.89	
Trust fees and commissions	3,490.85	
Insurance	5,765.56	
Bonds	203.00	
Memberships and subscriptions	836.70	
Protection of Colorado River rights	2,680.00	
Maintenance of office equipment	524.93	
Maintenance of San Diego office	3,123.24	
Contingencies	4,568.98	\$140,233.08
OPERATIONS:		
System operation	14,820.89	
Escondido office expense	1,967.91	
Radio repair and upkeep	1,964.21	
Office utilities and telephone	1,483.88	
Control station utilities	548.72	
Overtime	1,299.25	22,084.86
MAINTENANCE:		
Maintenance supervision	3,682.46	
Patrolling Aqueducts	2,601.16	
Pipeline - First Aqueduct	2,644.17	
Pipeline - Second Aqueduct	505.30	
Pipeline - other	39.77	
Tunnels	1,268.19	
Line structures	5,398.37	
Control buildings	2,002.98	
Buildings and grounds - Escondido	2,794.85	
Access roads	3,706.37	
Valve greasing and repairs	4,092.45	
Meter and controls	875.65	
Chlorination of Aqueducts	43,834.34	
Auto and truck - operation and maintenance	7,107.65	
Construction equipment - operation and maintenance	565.56	
Small tools and equipment	337.14	
Miscellaneous operation of shop	2,185.34	
Overtime	615.18	84,256.93
		246,574.87
Less charges to other appropriations		21,922.13
Total operating expense (Exhibit C)		\$224,652.74

See accompanying notes to financial statements.

FINANCIAL REPORT

Schedule 2
STATEMENT OF REVENUE - ESTIMATED AND ACTUAL

Year ended June 30, 1965

Source	Estimated Revenue	Actual Revenue	Actual Over or (Under) Estimate
Taxes, secured, current levy	\$ 1,758,957.88	\$ 1,777,726.50	\$ 18,768.62
Taxes, unsecured, current levy	167,467.12	171,017.71	3,550.59
Taxes, secured, prior years' levy	28,500.00	41,373.14	12,873.14
Taxes, unsecured, prior years' levy	1,500.00	1,049.61	(450.39)
Penalties on delinquent taxes	3,000.00	5,024.65	2,024.65
Receipts in lieu of taxes	---	7,682.55	7,682.55
Sale of water	6,168,000.00	5,488,411.00	(679,589.00)
Miscellaneous tax sales	---	116.65	116.65
Earnings on investments	209,000.00	261,766.30	52,766.30
Proceeds from sale of pipe line (note 5)	10,000.00	10,000.00	---
Rentals	1,900.00	1,906.00	6.00
Contract payments from Metropolitan Water District	620,000.00	620,061.99	61.99
Use of Authority facilities	1,200.00	723.00	(477.00)
Totals	\$ 8,969,525.00	\$ 8,386,859.10	\$(582,665.90)

Distribution by Funds

General fund	\$ 6,181,100.00	\$ 5,504,722.87	\$(676,377.13)
Other funds:			
Reserve fund	17,000.00	40,297.94	23,297.94
Waterworks bonds, 1947, interest and sinking fund	95,514.39	91,919.32	(3,595.07)
U. S. Government contract fund	1,159,408.33	1,165,356.75	5,948.42
Waterworks bonds, 1957, interest and redemption fund	1,458,703.04	1,525,751.34	66,988.30
Capital improvement fund	57,739.24	58,810.88	1,071.64
Total other funds	2,788,425.00	2,882,136.23	93,711.23
Totals	\$ 8,969,525.00	\$ 8,386,859.10	\$(582,665.90)

See accompanying notes to financial statements.

SAN DIEGO COUNTY WATER AUTHORITY

Schedule 3
STATEMENT OF APPROPRIATIONS AND EXPENDITURES
Year ended June 30, 1965

Estimate and Authority Number	Purpose	Prior Years' Appropriation Carried Over	Appropriations 1964-65
214	Access roads, Second Aqueduct	\$ 3,276.40	\$ -
218	Service connection, San Diego, San Dieguito and Sante Fe, Station 3292 41	3,062.29	-
238	Engineering design and rights of way for cross-connection	62,322.95	-
238	Construction of cross-connection	-	2,810,000.00
244	Report on Colorado River water quality	10,847.80	-
245	Second Aqueduct crossing U. S. Highway 295	9,114.05	196.81
248	Service connection, Yuima, Station 2155 00	11,857.58	-
248	Service connection, Yuima, Station 2155 00	10,000.00	-
249	Installation of air-conditioning equipment in Authority office	116.00	-
250	Engineering report on sizing and timing of second barrel of Second San Diego Aqueduct	9,976.97	-
251	Waterworks bonds, 1957 Series E, for construction of Aqueducts cross-connection	8,018.15	-
252	Budget fiscal year 1964-65:		
	General fund	-	5,977,300.00
	U. S. Government contract fund	-	1,178,400.00
	Waterworks bonds, 1947, interest and sinking fund	-	165,500.00
	Waterworks bonds, 1957, interest and redemption fund	-	1,566,380.00
254	Service connection, Valley Center, Station 1367 57	-	32,000.00
255	Installation of automatic equipment at Valley Center No. 1 service connection	-	4,000.00
256	Hjo San Diego interconnection with San Diego County Water Authority, Station 259 00	-	2,900.00
	Subtotal	129,992.19	11,730,676.81
	Less advances by agencies	13,062.29	36,000.00
	Total Authority	\$115,529.90	\$11,700,676.81
Distribution by Funds			
	General fund	\$ 10,963.80	\$ 5,977,300.00
	Other funds:		
	Waterworks bonds, 1947, interest and sinking fund	-	165,500.00
	U. S. Government contract fund	-	1,178,400.00
	Waterworks bonds, 1957, improvement fund	17,995.12	2,810,000.00
	Waterworks bonds, 1957, interest and redemption fund	-	1,566,380.00
	Capital improvement fund	86,570.98	3,096.81
	Total other funds	104,566.10	5,723,376.81
	Totals	\$115,529.90	\$11,700,676.81

See accompanying notes to financial statements.

FINANCIAL REPORT

Schedule 3 (Continued)
STATEMENT OF APPROPRIATIONS AND EXPENDITURES
Year ended June 30, 1965

Expenditures 1964-65	Cancelled Appropriations	Unexpended Appropriations June 30, 1965	Encumbrances	Unencumbered Balance
\$ 3,256.76	\$ 19.64	\$ -	\$ -	\$ -
43.48	3,018.81	-	-	-
46,879.62	15,443.33	-	-	-
2,592,279.11	-	217,720.89	165.05	217,555.84
-	10,847.80	-	-	-
9,310.86	-	-	-	-
11,857.58	-	-	-	-
9,720.13	279.87	-	-	-
65.60	51.00	-	-	-
6,705.15	-	3,271.82	-	3,271.82
5,288.09	2,730.06	-	-	-
5,640,335.41	336,964.59	-	-	-
1,178,253.55	146.45	-	-	-
165,500.00	-	-	-	-
1,566,380.00	-	-	-	-
3,923.86	-	28,076.14	16,399.34	11,676.80
1,054.11	-	2,945.89	1,988.48	957.41
102.83	-	2,797.17	-	2,797.17
11,240,955.54	369,501.55	254,811.91	18,552.87	236,259.04
14,741.58	3,298.68	31,022.03	18,387.82	12,634.21
\$11,226,213.96	\$366,202.87	\$223,789.88	\$ 165.05	\$223,624.83
\$ 5,640,400.41	\$347,863.29	-	-	-
165,500.00	-	-	-	-
1,178,253.55	146.45	-	-	-
2,604,272.35	2,730.06	230,992.71	165.05	230,827.66
1,566,380.00	-	-	-	-
71,407.65	15,462.97	2,797.17	-	2,797.17
5,585,813.55	18,339.48	223,789.88	165.05	223,624.83
\$11,226,213.96	\$366,202.87	\$223,789.88	\$ 165.05	\$223,624.83

SAN DIEGO COUNTY WATER AUTHORITY

FINANCIAL REPORT

Schedule 4
SUMMARY STATEMENT OF CASH RECEIPTS AND DISBURSEMENTS
Year Ended June 30, 1965

	Cash Balance		Cash		Interfund Transfers		Cash Balance
	July 1, 1964	July 1, 1965	Receipts	Disbursements	In	Out	June 30, 1965
General fund	\$ 380,189.65	\$ 6,776,641.51	\$ 6,646,538.55	\$ 897,608.63	\$ 1,209,641.00	\$ 198,200.24	\$ 198,200.24
Reserve fund	371,375.56	2,188,654.68	1,022,835.80	264,044.04	1,059,100.00	742,338.48	742,338.48
Waterworks bonds, 1947, interest and sinking fund	290,665.36	1,046,799.85	847,300.00	205,544.67	433,800.00	261,909.88	261,909.88
U. S. Government contract fund	23,842.12	1,348,746.37	1,321,153.55	632,990.73	694,900.00	9,525.67	9,525.67
Waterworks bonds, 1957, improvement fund	5,200,107.97	1,043,225.90	5,174,168.58	1,870,100.00	110,734.34	2,828,531.95	2,828,531.95
Waterworks bonds, 1957, interest and redemption fund	211,460.38	2,148,985.40	2,297,713.77	1,060,000.00	1,044,550.00	78,182.01	78,182.01
Capital improvement fund	319,666.10	1,233,083.42	595,763.79	91,530.70	489,003.43	559,423.00	559,423.00
Totals	\$6,797,307.14	\$15,786,338.13	\$17,905,474.04	\$5,041,818.77	\$5,041,818.77	\$4,678,171.23	\$4,678,171.23

TREASURY CASH ON DEPOSIT - June 30, 1965

Demand deposits:		
San Diego Trust and Savings Bank	\$ 25,088.82	
First National Bank of San Diego (Main Office)	660,351.98	\$ 685,440.80
Time deposits:		
First National Bank of San Diego (Main Office)	30,000.00	
First National Bank of San Diego (La Mesa Branch)	4,572,233.77	4,602,233.77
Deposits in transit	8,830.84	8,830.84
Less outstanding warrants	5,296,505.41	
Treasury cash, June 30, 1965, as above	618,334.18	\$4,678,171.23

See accompanying notes to financial statements.

Schedule 5
STATEMENT OF INVESTMENTS
Year ended June 30, 1965

Description	Date Acquired	Interest Rate	Yield	Maturity Date	Par or Maturity Value	Book Value
U. S. Treasury Bonds,	1/15/65	4%	4%	2/15/70	\$190,000.00	\$190,000.00

Distribution by Funds		
General fund	\$ 90,000.00	\$ 90,000.00
Reserve fund	99,940.00	99,940.00
	<u>\$190,000.00</u>	<u>\$190,000.00</u>

See accompanying notes to financial statements.

SAN DIEGO COUNTY WATER AUTHORITY

FINANCIAL REPORT

Schedule 6
STATEMENT OF BONDS PAYABLE
June 30, 1965

Schedule 6 (Continued)
STATEMENT OF BONDS PAYABLE
June 30, 1965

Description	Rate of Interest	Date of	
		Issue	Maturity
Waterworks bonds, 1947	2½-2-1/2%	1947	1966-71
Waterworks bonds, 1957	1½-6%	1957	1966-94

Bonds		
Authorized	Issued	Outstanding
\$ 2,000,000.00	\$ 2,000,000.00	\$ 700,000.00
35,000,000.00	35,000,000.00	34,185,000.00

BONDED DEBT MATURITIES

BONDED DEBT MATURITIES

Fiscal Year	Waterworks Bonds, 1947		
	Principal	Interest	Total
1965-66	\$ 150,000.00	\$ 12,500.00	\$ 162,500.00
1966-67	150,000.00	9,500.00	159,500.00
1967-68	100,000.00	7,000.00	107,000.00
1968-69	100,000.00	5,000.00	105,000.00
1969-70	100,000.00	3,000.00	103,000.00
1970-71	100,000.00	1,000.00	101,000.00
1971-72			
1972-73			
1973-74			
1974-75			
1975-76			
1976-77			
1977-78			
1978-79			
1979-80			
1980-81			
1981-82			
1982-83			
1983-84			
1984-85			
1985-86			
1986-87			
1987-88			
1988-89			
1989-90			
1990-91			
1991-92			
1992-93			
1993-94			
Totals	\$700,000.00	\$38,000.00	\$738,000.00

Waterworks bonds, 1957			Total		
Principal	Interest	Total	Principal	Interest	Total
\$ 270,000.00	\$ 1,303,180.00	\$ 1,573,180.00	\$ 420,000.00	\$ 1,315,680.00	\$ 1,735,680.00
300,000.00	1,288,780.00	1,588,780.00	450,000.00	1,298,280.00	1,748,280.00
340,000.00	1,272,580.00	1,612,580.00	440,000.00	1,279,580.00	1,719,580.00
420,000.00	1,254,180.00	1,674,180.00	520,000.00	1,259,180.00	1,779,180.00
480,000.00	1,231,180.00	1,711,180.00	580,000.00	1,234,180.00	1,814,180.00
560,000.00	1,204,580.00	1,764,580.00	660,000.00	1,205,580.00	1,865,580.00
690,000.00	1,176,380.00	1,866,380.00	690,000.00	1,176,380.00	1,866,380.00
770,000.00	1,145,705.00	1,915,705.00	770,000.00	1,145,705.00	1,915,705.00
830,000.00	1,111,505.00	1,941,505.00	830,000.00	1,111,505.00	1,941,505.00
890,000.00	1,078,425.00	1,968,425.00	890,000.00	1,078,425.00	1,968,425.00
970,000.00	1,043,625.00	2,013,625.00	970,000.00	1,043,625.00	2,013,625.00
1,070,000.00	1,005,600.00	2,075,600.00	1,070,000.00	1,005,600.00	2,075,600.00
1,140,000.00	963,525.00	2,103,525.00	1,140,000.00	963,525.00	2,103,525.00
1,195,000.00	918,435.00	2,113,435.00	1,195,000.00	918,435.00	2,113,435.00
1,260,000.00	870,910.00	2,130,910.00	1,260,000.00	870,910.00	2,130,910.00
1,330,000.00	825,615.00	2,155,615.00	1,330,000.00	825,615.00	2,155,615.00
1,400,000.00	778,090.00	2,178,090.00	1,400,000.00	778,090.00	2,178,090.00
1,470,000.00	727,070.00	2,197,070.00	1,470,000.00	727,070.00	2,197,070.00
1,540,000.00	673,475.00	2,213,475.00	1,540,000.00	673,475.00	2,213,475.00
1,620,000.00	617,305.00	2,237,305.00	1,620,000.00	617,305.00	2,237,305.00
1,680,000.00	557,640.00	2,237,640.00	1,680,000.00	557,640.00	2,237,640.00
1,740,000.00	495,775.00	2,235,775.00	1,740,000.00	495,775.00	2,235,775.00
1,815,000.00	431,492.00	2,246,492.00	1,815,000.00	431,492.00	2,246,492.00
1,880,000.00	364,420.00	2,244,420.00	1,880,000.00	364,420.00	2,244,420.00
1,960,000.00	294,700.00	2,254,700.00	1,960,000.00	294,700.00	2,254,700.00
2,040,000.00	222,012.00	2,262,012.00	2,040,000.00	222,012.00	2,262,012.00
2,100,000.00	146,357.00	2,246,357.00	2,100,000.00	146,357.00	2,246,357.00
2,165,000.00	68,417.00	2,233,417.00	2,165,000.00	68,417.00	2,233,417.00
200,000.00	8,840.00	208,840.00	200,000.00	8,840.00	208,840.00
\$34,185,000.00	\$21,079,798.00	\$55,264,798.00	\$34,885,000.00	\$23,117,798.00	\$58,002,798.00

Waterworks bonds, 1947, dates of maturity: January 1 - Bonds and interest coupons
July 1 - Interest coupons only

Waterworks bonds, 1957, dates of maturity: February 1 - Bonds and interest coupons
August 1 - Interest coupons only

See accompanying notes to financial statements.

Table F-1
STATEMENT OF TAX ASSESSMENTS AND COLLECTIONS
Fiscal years 1945-46 to 1964-65

	Tax Assessments to Date	Adjustments to Tax Assessments	Tax Collections	Interest and Penalties	Tax on Options	Receipts In Lieu of Taxes	Miscellaneous Interest Tax Sales	Refunds (credit)	Net Total Collections	Uncollected June 30, 1965
Fallbrook Public Utility District	\$ 146,355.16	(21,377)	\$ 147,779.56	\$ 457.06	-.12	\$ 3,420.09	\$ 17.30	\$ 32.00	\$ 151,462.90	\$ 541.22
Imperial Irrigation District	3,685,741.78	(7,556.70)	3,678,185.08	3,144.78	92.65	4,289.65	956.67	512.80	3,686,172.91	11,622.71
City of National City	653,092.72	(283.89)	652,808.83	1,065.56	8.39	6,253.42	66.92	492.44	659,692.40	1,737.32
City of Coronado	449,136.91	259.74	449,396.65	847.77	3.11	2,953.94	45.91	495.42	451,196.47	1,323.26
City of San Diego	11,656,229.19	2,173.41	11,611,051.58	16,456.93	42.29	113,263.43	3,493.39	41,239.32	11,747,353.34	23,894.93
Banana M. W. D.	85,319.41	135.31	85,454.72	346.30	-	2,860.00	1.44	6.27	88,141.20	949.99
Santa Fe Irrigation District	263,014.78	1,264.82	264,279.60	1,054.42	621.19	2,292.80	1,490.99	737.96	267,441.40	1,201.46
San Clegatis Irrigation District	236,736.95	(154.79)	236,582.16	465.01	3.48	1,123.14	118.77	242.51	238,455.29	1,045.16
City of Escondido	260,172.94	261.13	260,434.07	328.70	-	12.14	28.94	32.42	260,725.90	1,697.42
South Bay Irrigation District	1,090,922.61	(5,628.60)	1,085,294.01	1,528.29	-.38	14,781.45	74.99	12,482.36	1,098,246.42	2,262.42
Rawson M. W. D.	76,425.30	74.22	76,500.52	215.22	-	-	1.02	6.42	76,718.73	391.25
Poway M. W. D.	164,125.30	(288.27)	163,837.03	451.89	-	-	-	17.81	164,015.92	2,586.73
Bonito Colorado M. W. D.	564,913.00	1,555.07	566,468.07	1,448.28	1.72	19,707.21	71.79	154.96	586,149.29	2,496.22
Riviera del Diablo M. W. D.	258,073.27	913.84	258,987.11	554.72	-	56,784.55	-.63	32.66	285,442.62	1,366.73
Carlsbad M. W. D.	334,317.43	(718.74)	333,598.69	322.79	-	35,175.44	8.10	398.99	369,033.49	794.54
Valley Center M. W. D.	79,986.28	44.92	79,941.36	253.23	-	-	14.43	7.53	79,973.15	991.99
Rio San Diego M. W. D.	227,925.22	(433.29)	227,491.93	1,684.10	-.66	317.25	10.19	226.15	229,340.23	2,901.23
Osby M. W. D.	177,912.02	(542.24)	177,369.78	320.28	-	-	25.81	137.68	177,543.51	1,822.84
Oliveria M. W. D.	15,195.29	(8.00)	15,187.29	34.82	-	750.00	-	-.02	15,964.89	81.13
City of Del Mar	46,882.33	1,158.29	48,040.62	363.00	-	900.00	-	4.86	49,358.81	363.81
Yolma M. W. D.	7,037.59	(117.84)	6,919.75	-	-	400.00	-	-	7,319.75	61.83
Total Member Agencies	18,622,977.69	(682.25)	18,548,091.90	34,371.41	972.63	332,350.81	4,848.14	57,095.33	18,943,968.77	73,063.54
Withdrawn areas	4,169.03	29.36	4,198.01	11.48	.15	195.64	2.48	3.23	4,204.42	-
Totals	\$18,627,146.74	(\$52.29)	\$18,553,190.91	\$34,382.89	\$972.78	\$332,546.45	\$4,850.62	\$57,100.67	\$18,948,173.19	\$73,063.54

Table F-2
ASSESSED VALUATIONS AND TAX RATES
Fiscal Years 1945-46 to 1964-65

Fiscal Year	Secured Property	Public Utilities	Unsecured Property	Total	Tax Rate Per \$100	
					Secured	Unsecured
1945-1946	\$ 212,092,975	28,253,700	29,969,130	270,296,805	0.04	
1946-1947	208,715,150 (1)	29,433,450	30,663,910	268,814,510	0.04	0.04
1947-1948	233,579,990	32,740,680	40,977,850	307,298,520 (2)	0.14	0.04
1948-1949	254,227,570	37,482,920	47,177,300	338,886,890	0.14	0.14
1949-1950	290,351,875	42,429,140	45,743,200	378,524,215	0.10	0.14
1950-1951	306,104,930	43,595,730	44,717,740	394,418,400	0.10	0.10
1951-1952	344,620,030	48,452,940	50,904,035	443,977,005	0.10	0.10
1952-1953	382,948,860	53,208,230	63,996,330	500,153,410	0.12	0.10
1953-1954	490,709,350	63,092,050	69,147,150	622,948,550	0.10	0.12
1954-1955	546,272,880	69,243,550	79,629,790	695,146,220	0.10	0.10
1955-1956	627,062,969	87,485,390	79,938,430	794,484,800	0.09	0.10
1956-1957	650,824,400	101,224,200	97,950,800	879,999,400	0.09	0.09
1957-1958	761,088,330	111,151,800	128,785,440	1,001,025,600	0.09	0.09
1958-1959	865,283,080	128,479,290	128,124,720	1,121,887,090	0.10	0.09
1959-1960	979,491,050	145,317,290	134,846,730	1,259,655,070	0.11	0.10
1960-1961	1,116,723,830	165,666,720	159,954,740	1,442,345,290	0.11	0.11
1961-1962	1,220,810,650	191,276,650	155,149,890	1,567,237,190	0.11	0.11
1962-1963	1,272,696,330	201,245,370	154,989,440	1,628,741,140	0.11	0.11
1963-1964	1,340,197,170	209,793,790	159,714,930	1,709,705,890	0.11	0.11
1964-1965	1,423,375,590	213,352,470	151,686,520	1,788,414,580	0.11	0.11

(1) City of Coronado secured assessed valuations not included in this or subsequent tax levies by the Authority, having withdrawn from the Authority prior to 1946-47.
(2) City of Coronado not included in this or subsequent total valuation.

Table F-3
TAX LEVIES AND TAX COLLECTIONS
Fiscal years 1945-46 to 1964-65

Fiscal Year	Tax Levy (1)	Collection of current year's taxes		Percentage of Levy Collected During Fiscal Year	Adjustments to prior years' levies	Collection of prior years' taxes during fiscal year	Total Tax Collections	Ratio of Collections to Adjusted Tax Levy (2)	Accumulated Delinquent Taxes	Ratio of Accumulated Delinquent Taxes to Adjusted Tax Levy (3)
		Fiscal Year	During Fiscal Year							
1945-46	\$ 96,131.33	\$ 94,656.51	98.47%	\$ -	\$ -	\$ 94,656.51	98.47%	\$ 1,474.82	1.53%	
1946-47	107,808.89	105,753.78	98.09	-	1,090.25	106,844.03	99.11	2,439.86	2.26	
1947-48	309,581.37	381,563.14	97.94	-	1,882.72	383,445.86	98.42	5,355.39	2.20	
1948-49	474,520.78	459,594.39	96.94	-	5,916.41	465,420.80	98.08	17,655.37	3.73	
1949-50	401,112.07	392,732.15	97.91	329.58	13,362.55	406,074.70	101.15	13,032.32	3.25	
1950-51	397,970.41	396,274.43	99.57	373.44	5,217.82	398,492.25	100.03	12,904.12	3.24	
1951-52	420,403.19	441,242.12	97.97	978.87	7,039.55	448,941.67	99.46	15,346.51	3.40	
1952-53	594,003.48	585,417.35	98.56	(1,140.26)	12,367.93	597,985.29	100.76	10,854.27	1.82	
1953-54	652,333.08	640,239.42	98.15	4,213.42	9,842.33	650,181.75	99.03	17,191.12	2.62	
1954-55	709,679.89	695,200.64	97.96	1,295.13	12,638.36	707,838.94	99.56	20,295.20	2.86	
1955-56	802,375.25	788,734.26	97.41	(2,095.98)	12,140.64	800,874.90	99.95	20,726.97	2.59	
1956-57	874,774.45	861,461.66	98.48	576.90	13,056.01	874,517.67	99.90	21,360.65	2.46	
1957-58	965,006.37	946,445.55	98.08	958.17	12,890.09	959,335.64	99.31	25,188.73	2.92	
1958-59	1,178,885.91	1,157,285.98	98.17	-	13,297.45	1,170,613.43	99.30	36,402.23	3.09	
1959-60	1,436,270.69	1,408,277.57	98.05	(5,274.26)	16,647.80	1,428,925.37	99.39	42,532.29	2.97	
1960-61	1,624,733.20	1,586,169.51	97.63	(8,720.61)	21,501.88	1,607,671.89	98.48	50,874.49	3.15	
1961-62	1,763,745.54	1,718,575.76	97.44	(2,276.45)	21,477.89	1,750,053.56	99.35	62,330.02	3.54	
1962-63	1,816,449.35	1,775,932.25	97.77	(3,688.71)	38,134.68	1,814,066.93	100.07	61,023.63	3.37	
1963-64	1,910,019.03	1,862,973.83	97.54	(268.07)	36,825.61	1,899,799.44	99.49	70,973.17	3.72	
1964-65	2,000,067.76	1,948,853.84	97.44	(5,588.60)	42,595.95	1,991,450.79	99.90	73,003.54	3.66	

- (1) Including adjustments to current year's levy.
- (2) Including adjustments to current and prior years' levies.

Table F-4
LEGAL DEBT MARGIN
June 30, 1965

\$1,785,414,580.00
268,292,187.00

Assessed valuation 1964-65 (Table F-2)
Debt limit (1.5% of assessed valuation) (1)
Amount of debt applicable to debt limit:
General obligation bonds:
1947 waterworks bonds
1957 waterworks bonds, Series A
1957 waterworks bonds, Series B
1957 waterworks bonds, Series C
1957 waterworks bonds, Series D
1957 waterworks bonds, Series E

\$ 700,000.00
7,285,000.00
7,300,000.00
7,830,000.00
6,830,000.00
4,910,000.00

\$34,845,000.00

Contractual obligations:
To U. S. Government on First San Diego Aqueduct:
On first barrel
On second barrel

\$ 4,375,000.00
11,270,138.36

To Metropolitan Water District on annexation charges

17,651,128.36

25,914,211.90
63,799,211.90

Total contractual obligations

Total gross indebtedness

Less portion of fund balances available for debt redemption:
Waterworks bonds, 1947, interest and sinking fund

261,909.88

9,525.67

U. S. Government contract fund

75,183.01

Waterworks bonds, 1957, interest and redemption fund

349,617.56

Net indebtedness

Legal debt margin

63,449,594.34
\$ 204,812,392.60

(1) Sec. 5 (7), County Water Authority Act.

SAN DIEGO COUNTY WATER AUTHORITY

Table F-5

METROPOLITAN WATER DISTRICT ANNEXATION CHARGES,
ASSESSMENTS AND BALANCES ON AUTHORITY AREAS.

Member Agencies	Date of Annexation	Period of Special Assessments	
		First Yr.	Last Yr.
Annexation Charges Completed to June 30, 1964	---	---	---
Outstanding as of June 30, 1964			
Chula Vista, City of			
Fallbrook Public Utility District			
Lakeside Irrigation District			
Helix Irrigation District	12-17-46	1947-48	1976-77
National City, City of			
Oceanside, City of			
San Diego, City of			
Iseno Colorado M. W. D.	6-11-54	1955-56	1984-85
Carlsbad M. W. D.	6-16-54	1955-56	1984-85
Del Mar, City of	11-23-62	1963-64	1992-93
Escondido, City of	10-9-50	1951-52	1980-81
Fallbrook Public Utility District			
No. 1 Annexation of 1950	8-1-50	1951-52	1980-81
No. 2 Annexation of 1958	11-24-58	1959-60	1988-89
Helix Irrigation District			
Crest P. U. D. Annexation	12-13-48	1949-50	1978-79
El Cajon Dry Island Annexation	12-20-54	1955-56	1984-85
Helix-Watson Ranch Annexation	2-20-59	1960-61	1989-90
Helix-Sunny Slope Hts. Annexation	9-17-59	1960-61	1989-90
Olivenhain M. W. D.	7-25-60	1961-62	1990-91
No. 1 Annexation of 1965	2-11-65	1966-67	1995-96
Otay M. W. D.	10-26-56	1957-58	1986-87
No. 3 Annexation of 1960	10-20-60	1961-62	1990-91
Poway M. W. D.	4-21-54	1955-56	1984-85
No. 1 Annexation of 1959	9-21-59	1960-61	1989-90
Rainbow M. W. D.	4-10-54	1955-56	1984-85
No. 1 Annexation of 1959	5-12-59	1960-61	1989-90
Hamona M. W. D.	8-27-57	1958-59	1987-88
No. 1 Annexation of 1959	5-29-59	1960-61	1989-90
No. 2 Annexation of 1961	9-22-61	1962-63	1991-92
No. 3 Annexation of 1963	9-20-63	1964-65	1993-94
Rincon del Diablo M. W. D.	6-14-54	1955-56	1984-85
No. 3 Annexation of 1964	8-27-64	1964-65	1964-65
Rio San Diego M. W. D.			
(not including Lakeside I. D.)	6-7-56	1957-58	1986-87
No. 2 Annexation of 1959	11-6-59	1960-61	1989-90
No. 3 Annexation of 1960	10-17-60	1961-62	1990-91
San Dieguito Irrigation District	12-13-48	1949-50	1978-79
No. 1 Annexation of 1959	9-15-59	1960-61	1989-90
Santa Fe Irrigation District	12-13-48	1949-50	1978-79
South Bay Irrigation District			
(not including City of Chula Vista)	11-3-52	1953-54	1982-83
Tidelands Annexation	5-11-65	1964-65	1964-65
Valley Center M. W. D.	3-9-55	1956-57	1985-86
No. 1 Annexation of 1960	12-12-60	1961-62	1990-91
Yuima M. W. D.	12-16-63	1964-65	1993-94
Total			

FINANCIAL REPORT

Table F-5 (Continued)

METROPOLITAN WATER DISTRICT ANNEXATION CHARGES,
ASSESSMENTS AND BALANCES ON AUTHORITY AREAS

Amount of Annexation Charge	Special Assessments to 6/30/64	Fiscal Year 1964-65		Remaining Balance 6/30/65
		Special Assessments	Tax Rate \$ / \$100	
\$ 95,650	\$ 95,650.00	\$ ---	---	\$ ---
13,645,000	7,432,577.98	404,092.82	3	5,208,329.20
1,072,230	323,141.85	39,084.06	7	710,004.09
548,100	165,807.34	18,882.30	5	363,410.36
611,250	20,462.39	20,727.88	22	570,050.73
386,000	167,511.04	14,700.30	6	203,788.66
34,600	19,218.76	774.80	3	14,606.44
50,400	5,507.95	1,576.77	13	40,315.28
10,500	5,280.38	329.34	3	4,890.28
327,450	102,060.37	12,552.49	2	212,837.14
8,730	1,173.07	292.06	10	7,264.87
38,250	5,143.11	1,282.75	11	31,824.14
83,880	8,485.94	2,861.09	12	72,529.97
512,520	0	0	---	512,520.00
273,000	66,382.74	9,419.50	3	197,197.76
95,100	9,622.50	3,140.29	14	82,337.21
91,800	27,955.80	2,934.36	2	60,909.84
27,150	3,624.21	950.46	8	22,575.33
167,700	50,575.18	6,353.60	6	119,771.22
24,300	3,289.07	807.83	15	20,203.10
339,000	68,455.96	10,856.10	14	259,687.94
42,330	5,694.56	1,408.58	20	35,226.86
15,480	1,036.19	532.28	24	13,911.53
10,560	0	358.03	16	10,201.97
757,200	228,419.92	26,927.52	7	501,852.56
44,000	0	44,000.00	Cash	0
373,980	87,279.63	13,702.14	5	272,998.23
109,110	14,575.02	3,660.50	14	90,874.48
389,890	29,217.90	9,617.17	17	251,054.93
187,100	95,118.27	4,733.60	2	87,248.13
71,820	9,668.66	2,305.16	19	59,846.18
167,000	84,740.13	6,206.59	3	76,053.28
449,370	168,322.63	12,073.96	3	268,973.41
2,000	0	2,000.00	Cash	0
205,080	54,915.95	6,803.73	8	143,960.32
23,700	2,378.87	789.33	19	20,531.80
749,490	0	25,212.73	97	724,277.27
\$21,344,329	\$9,369,302.37	\$711,963.12		\$11,263,073.51

SAN DIEGO COUNTY WATER AUTHORITY

Table F-6
SAN DIEGO COUNTY WATER AUTHORITY
ANNEXATION CHARGES, ASSESSMENTS AND BALANCES

Area	Date of Annexation	Amount of Annexation Charge	Period of Special Assessments		Special Assessments to 6/30/64	Fiscal Year 1964-65		Remaining Balance of Annexation Charges 6/30/65	
			First Year	1st Year		Special Assessments	Tax Rate \$/100		
Annexation Charges Completed to June 30, 1964		\$481,830.00			\$581,830.00	\$	0	\$	0
Annexation Charges Outstanding as of June 30, 1964:									
Del Mar, City of	11-23-62	130,700.00	1963-64	1972-73	13,845.03	13,199.72	14¢	103,655.25	
Fallbrook P. U. D. No. 2 Annexation of 1958.	11-24-58	5,500.00	1959-60	1968-69	4,418.34	849.00	5¢	3,232.66	
Helix I. D.	9-17-59	11,650.00	1960-61	1968-70	4,739.32	1,254.77	10¢	5,545.91	
Surveyslope Heights Annex, Clivenshain M. W. D.	7-25-60	13,660.00	1961-62	1970-71	4,447.94	1,433.02	6¢	7,714.04	
No. 1 Annex of 1963	2-11-65	13,560.00	1966-67	1975-76	0	500.00	Cash	13,060.00	
Okay M. W. D. No. 3 Annex, of 1960	10-20-60	16,800.00	1961-62	1970-71	5,329.22	1,789.16	8¢	9,681.62	
Poway M. W. D. No. 1 Annex, of 1959	9-21-59	4,000.00	1960-61	1969-70	1,861.92	475.47	4¢	1,723.61	
Rainbow M. W. D. No. 1 Annex, of 1959	5-12-59	3,500.00	1960-61	1969-70	1,312.42	376.99	7¢	1,610.59	
Rancho, M. W. D. No. 1 Annex, of 1959	5-29-59	6,600.00	1960-61	1969-70	2,915.44	434.48	9¢	3,056.08	
Rincon Del Diablo M. W. D. No. 3 Annexation of 1964.	8-27-64	4,800.00	1964-65	1964-65	0	4,500.00	Cash	0	
Rio San Diego M. W. D. No. 2 Annex, of 1959	11-6-59	18,300.00	1960-61	1969-70	7,635.05	1,829.24	7¢	8,785.71	
No. 3 Annex, of 1960	10-17-60	57,100.00	1961-62	1970-71	17,546.90	5,574.72	10¢	33,978.38	
San Dieguito I. D. No. 1 Annex, of 1959	9-15-59	8,400.00	1960-61	1969-70	3,404.97	844.58	7¢	4,130.35	
South Bay I. D., Tiroland Annex, Valley Center M. W. D. No. 1 Annex, of 1960	5-11-65	1,500.00	1964-65	1964-65	0	1,500.00	Cash	0	
Yuma M. W. D.	12-12-60	3,900.00	1961-62	1970-71	1,239.63	415.22	10¢	2,245.15	
	12-16-63	40,750.00	1964-65	1973-74	500.00	4,154.80	16¢	36,091.20	
Total		\$925,350.00			\$651,276.08	\$39,640.17		\$234,463.75	